

FINAL TRACING REC'D

11-01-07
(July 2007-56)

FINAL PLAT CAMPUS CREST ADDITION AN ADDITION TO WICHITA, SEDGWICK COUNTY, KANSAS

PLANNING COMMISSION CERTIFICATE

This plat of "CAMPUS CREST ADDITION" has been submitted to and approved by the Wichita-Sedgwick County Metropolitan Area Planning Commission, Wichita, Kansas.

Dated this _____ day of _____, 2007

WICHITA-SEDGWICK COUNTY METROPOLITAN AREA PLANNING COMMISSION

_____, Chair
M.S. Mitchell, Chair

Attest: _____, Secretary
John L. Schlegel, Secretary

Affix MAPD Seal

GOVERNING BODY CERTIFICATE

The dedications shown on this plat are hereby accepted and this plat is hereby approved by the governing body of the City of Wichita, Kansas.

Dated this _____ day of _____, 2007

At the direction of the City Council.

_____, Mayor
Carl Brewer, Mayor

Attest: _____, City Clerk
Karen Sublett, City Clerk

Affix City Seal

TRANSFER RECORD

STATE OF KANSAS, SEDGWICK COUNTY) ss:

Entered on transfer record this _____ day of _____, 2007.

_____, County Clerk
Don Brace, County Clerk

Affix Clerk Seal

REGISTER OF DEEDS CERTIFICATE

STATE OF KANSAS, SEDGWICK COUNTY) ss:

This is to certify that this instrument was filed for record in the Register of Deeds office this day of _____, 2007, at _____ o'clock M, and is duly recorded for a Fee of \$20.00

_____, Register of Deeds
Bill Meek, Register of Deeds

Attest: _____, Deputy
Tonya E. Buckingham, Deputy

COUNTY SURVEYOR

Reviewed in accordance with K.S.A. 58-2006 on this _____ day of _____, 2007.

_____, Deputy County Surveyor
Tricia L. Robello, LS #1246
Deputy County Surveyor
Sedgwick County, Kansas

MKEC
ENGINEERING & SURVEYING
CONSULTANTS, INC.

411 N. WEBB ROAD
WICHITA, KS. 67206
316-684-9600

CERTIFICATE OF SURVEY

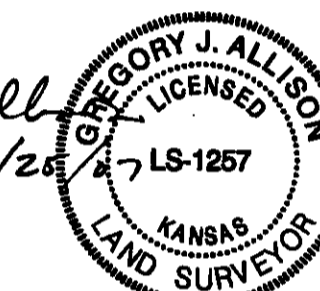
I, Gregory J. Allison, a registered land surveyor in Kansas, do hereby certify that I have been in responsible charge of surveying and plotting of "CAMPUS CREST ADDITION" an addition to Wichita, Sedgwick County, Kansas, into a Street, a Reserve, a Lot and a Block, the same being accurately set forth in the accompanying plat and described herein:

A tract of land lying within a portion of the Northeast Quarter, Section 2, Township 27 South, Range 1 East, of the 6th Principal Meridian, City of Wichita, Sedgwick County, Kansas; said tract being a replat of a portion of vacated Lots 18 and 19, and all of Lots 20 through 31, Block 8, and vacated Lots 1 through 20, Block 10, in Greenbriar Manor Addition to Wichita, Sedgwick County, Kansas. Said tract being more particularly described as follows:
COMMENCING at the Northeast corner of said Northeast Quarter, Section 2, Township 27 South, Range 1 East of the 6th Principal Meridian, City of Wichita, Sedgwick County, Kansas; thence along the north line of said Northeast Quarter S88°59'14"W, a distance of 50.00 feet to the northeast corner of vacated Lot 20, Block 10 of Greenbriar Manor Addition, said point being the POINT OF BEGINNING; thence along the east line of said Block 10, S00°37'42"E, 812.71 feet; thence S89°22'18"W, 650.56 feet; thence S00°37'42"E, 336.16 feet to a point where the South line of Lot 18, Block 8 intersects the East line of Lot 52, Block 8 of said Addition; thence N39°57'40"W, 489.91 feet; thence N00°37'59"W, 651.57 feet to the Northwest corner of vacated Lot 31, Block 8 of said Addition; thence along the northerly line of said vacated lot N62°57'31"E, 83.74 feet to a curve to the left; thence along said curve 119.51 feet, said curve having a central angle of 26°48'30", a radius of 255.42 feet, a long chord distance of 118.42 feet, bearing N49°34'53"E to a point on the North line of said Addition; thence along the North line of said Addition N88°59'14"E, 795.15 feet to the POINT OF BEGINNING.

All utility easements, building setbacks, access controls; together with any and all other public dedications, rights-of-way, and/or easements within the above described property are hereby vacated and replatted by virtue of K.S.A. 12-512(b).

I hereby certify that the details of this plat are correct to the best of my knowledge and belief this 25 day of October 2007.

Gregory J. Allison, PE, LS #1257
MKEC Engineering Consultants, Inc.
411 North Webb Road
Wichita, Kansas 67206



Know all men by these presents that the undersigned property owner of the land above set forth in the Registered Land Surveyor's Certificate, has caused the same to be surveyed and platted into a Street, a Reserve, a Lot and a Block, the same to be known as "CAMPUS CREST ADDITION," an addition to Wichita, Sedgwick County, Kansas.

Easements for the construction and maintenance of public utilities and drainage, and sidewalks, as indicated on the accompanying plat are hereby granted to the public.

A drainage plan has been developed for this plat. All drainage easements, rights-of-way, or reserves shall remain at established grades or as modified with the approval of the City Engineer, and shall be unobstructed to allow for the conveyance of storm water.

All abutters rights of access to or from Oliver Avenue, over and across the east line of Block 1, of "CAMPUS CREST ADDITION", are hereby granted to the appropriate governing body, as indicated hereon.

Reserve "A" is platted for open space, private recreation, landscaping, irrigation, utilities confined by easements, parking, and drainage.

Reserve "A" is also platted for flood control and shall be the responsibility of the undersigned or homeowner's association until such time as the appropriate governing body exercising jurisdiction elects to assume the responsibility for the maintenance and improvements of the drainage, provided further, that no structure shall be constructed on or within said flood control area as indicated, nor shall any fill, change of grade, creation of a channel or any other work be carried out without the permission of the City Engineer.

OWNER'S CERTIFICATE

Wichita-CHR Campus Crest, LLC, a North Carolina limited liability company

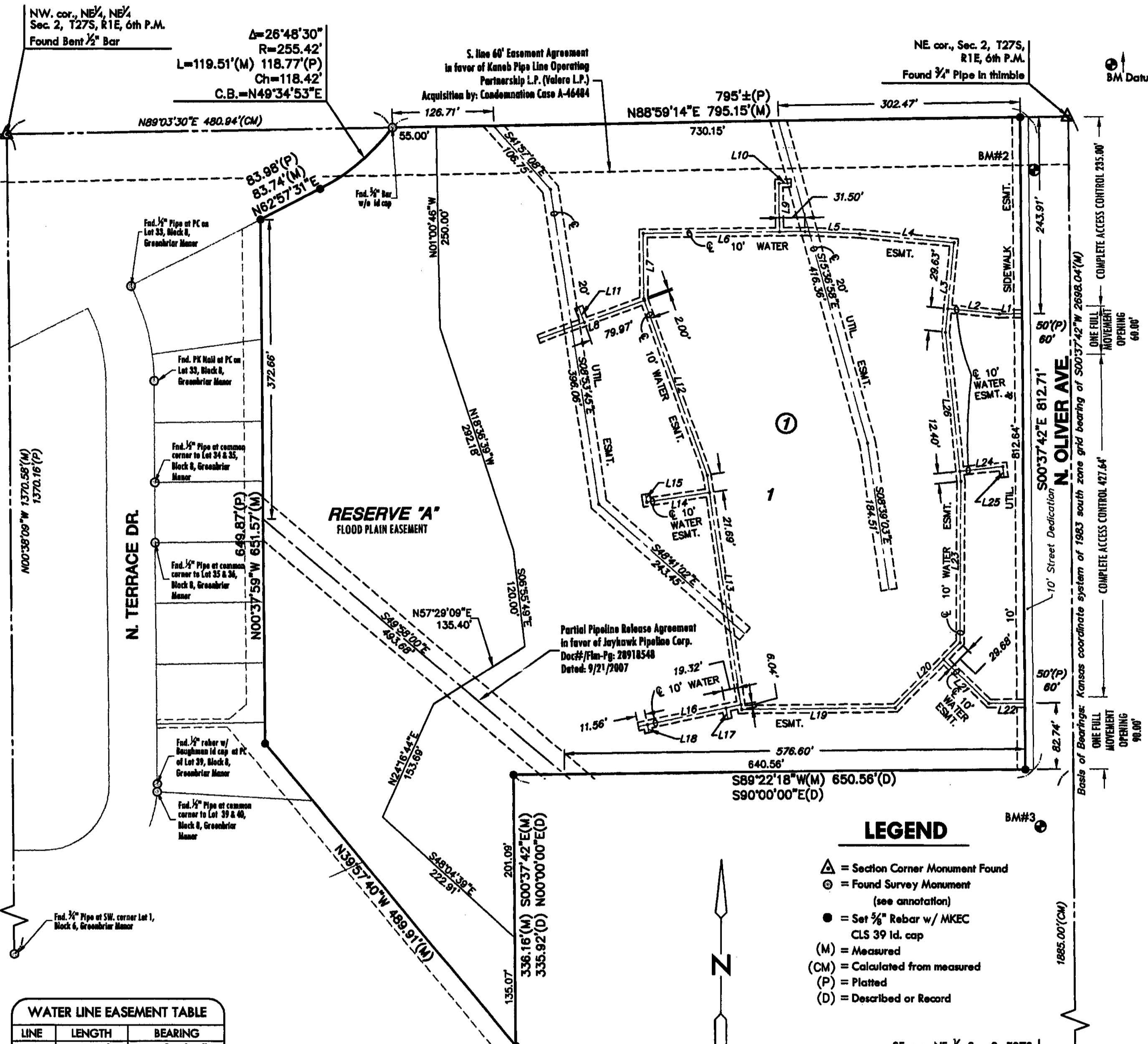
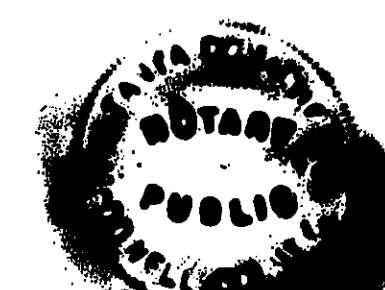
Carl H. Ricker, Jr., Manager
Carl H. Ricker, Jr. Manager

STATE OF North Carolina Buncombe COUNTY) ss:

This instrument was acknowledged before me on 20th day of October, 2007, by Carl H. Ricker, Jr. Manager, Wichita-CHR Campus Crest, LLC, a North Carolina limited liability company, IN WITNESS WHEREOF, I have hereunto set my hand and affixed my official seal, the day and year last above written.

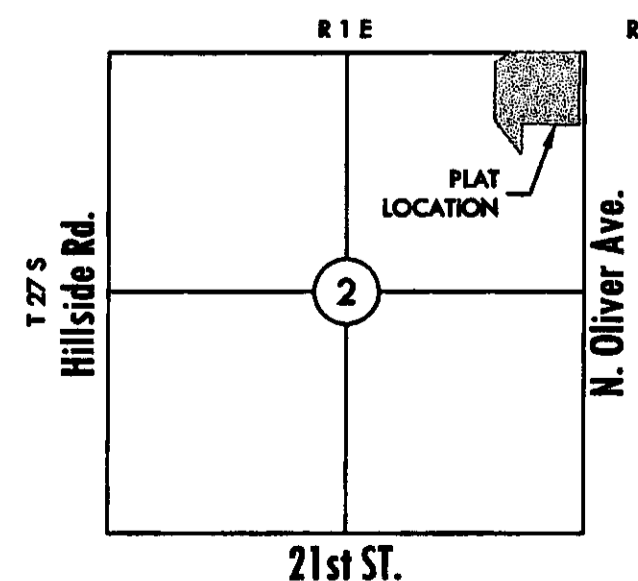
Affix Seal

Tonya E. Buckingham, Notary Public
Notary Public
My Term Expires: 3/4/2008



LINE	LENGTH	BEARING
L1	28.13'	N89°22'18"E
L2	64.92'	S84°37'42"E
L3	111.96'	S05°22'18"W
L4	118.68'	S84°59'33"E
L5	68.81'	S87°37'42"E
L6	201.92'	N89°22'18"E
L7	81.32'	N00°37'42"W
L8	140.56'	S70°05'36"W
L9	59.55'	N00°39'10"W
L10	15.00'	N89°00'27"E
L11	20.00'	N19°54'24"W
L12	234.17'	N19°53'25"W
L13	295.15'	N08°37'42"W
L14	79.44'	N81°22'18"E
L15	10.00'	N08°37'42"W
L16	131.06'	S78°07'18"W
L17	14.00'	S11°52'42"E
L18	10.00'	S11°52'42"E
L19	192.28'	S89°22'18"W
L20	115.99'	S44°22'18"W
L21	79.60'	N45°37'42"W
L22	44.92'	S89°22'18"W
L23	199.99'	S00°00'00"E
L24	54.16'	N83°55'01"E
L25	13.24'	S06°04'59"E
L26	186.90'	S06°04'59"E

LOTS (inclusive)	BLOCK	ELEVATION NGVD
1	1	1349.0

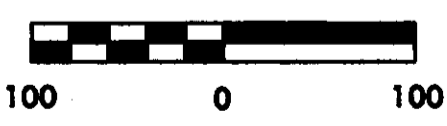


BENCH MARK

- Datum City of Wichita disc SE corner hubguard on RCB 100'± S. of Norwood Elev.= 1349.34 (NAVD 88)
- BM#2 "□" SW corner traffic signal light pole at the SW corner Oliver & 29th St. N. Elev.=1348.33' (NAVD 88)
- BM#3 "□" top of curb at east edge of sidewalk NW corner of vacated 28th St. Greenbriar Manor Addition. 28th St. & Oliver Elev.=1352.18 (NAVD 88)

LEGEND

- △ = Section Corner Monument Found
- ⊙ = Found Survey Monument (see annotation)
- = Set 3/8" Rebar w/ MKEC CLS 39 Id. cap
- (M) = Measured
- (CM) = Calculated from measured
- (P) = Platted
- (D) = Described or Record



Basis of Bearings: Kansas coordinate system of 1983 south zone grid bearing of S00°37'42"E along the E. Line of NE 1/4, Sec. 2, T27S, R1E, 6th P.M.

SE cor., NE 1/4, Sec. 2, T27S, R1E, 6th P.M.
Found 1/2" Bar w/ PEC Cap