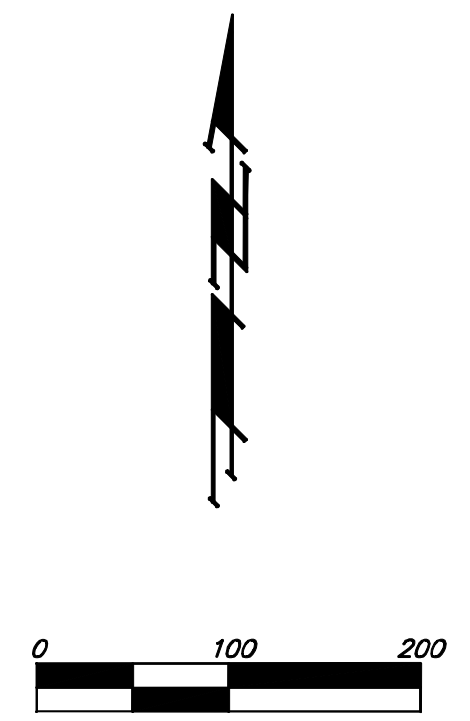
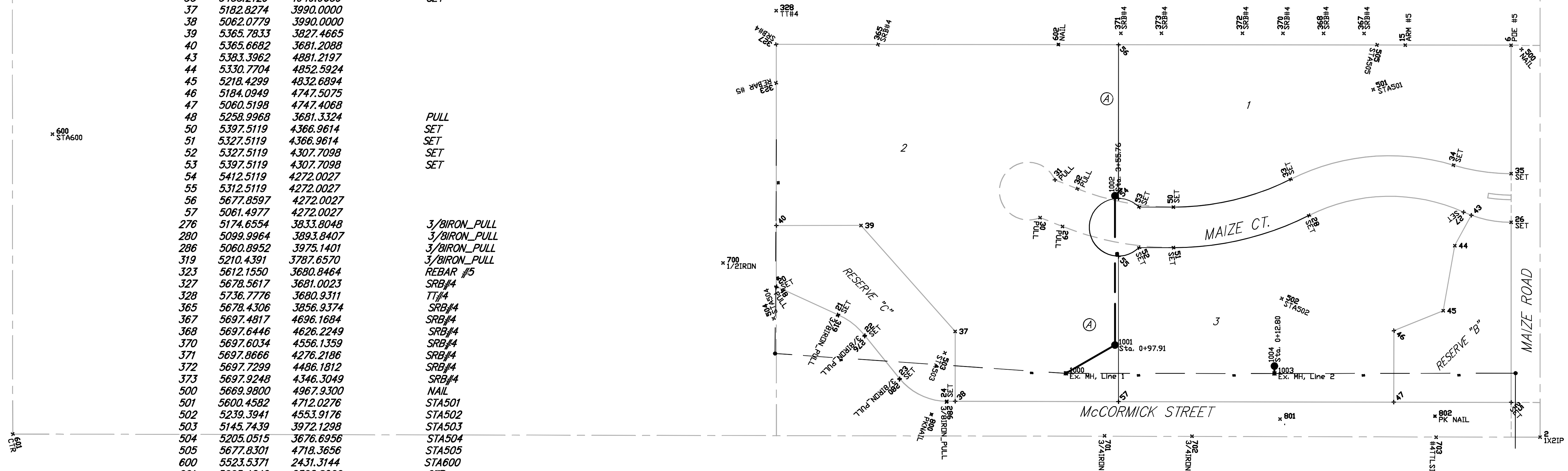


# LILLIE 2ND ADDITION WICHITA, SEDGWICK COUNTY, KANSAS



PT	NORTH	EAST	ELEV	DESC
1	7644.7200	5000.0000		3X4IP
2	5000.0000	5000.0000		1X2IP
6	5677.0545	4949.9493		POE #5
15	5677.3205	4767.2647		ARM #5
20	5260.2924	3681.2783		SET
21	5211.4789	3788.0235		SET
22	5175.6874	3834.1497		SET
23	5101.1422	3894.2260		SET
24	5062.1075	3975.6022		SET
25	5060.1030	4949.9955		SET
26	5371.2129	4949.9722		SET
27	5388.8787	4867.7733		SET
28	5383.1137	4600.9150		SET
29	5364.0767	4175.4140		PULL
30	5379.4429	4136.6321		PULL
31	5444.5207	4162.4174		PULL
32	5429.1545	4201.1993		PULL
33	5445.6288	4569.4213		SET
34	5469.9355	4850.5725		SET
35	5455.2129	4949.9659		SET
37	5182.8274	3990.0000		
38	5062.0779	3990.0000		
39	5365.7833	3827.4665		
40	5365.6682	3681.2088		
43	5383.3962	4881.2197		
44	5330.7704	4852.5924		
45	5218.4299	4832.6894		
46	5184.0949	4747.5075		
47	5060.5198	4747.4068		
48	5258.9968	3681.3324		PULL
50	5397.5119	4366.9614		SET
51	5327.5119	4366.9614		SET
52	5327.5119	4307.7098		SET
53	5397.5119	4307.7098		SET
54	5412.5119	4272.0027		SET
55	5312.5119	4272.0027		
56	5677.8597	4272.0027		
57	5061.4977	4272.0027		
276	5174.6554	3833.8048		3/BIRON_PULL
280	5099.9964	3893.8407		3/BIRON_PULL
286	5060.8952	3975.1401		3/BIRON_PULL
319	5210.4391	3787.6570		3/BIRON_PULL
323	5612.1550	3680.8464		REBAR #5
327	5678.5617	3681.0023		SRB#4
328	5736.7776	3680.9311		TT#4
365	5678.4306	3856.9374		SRB#4
367	5697.4817	4696.1684		SRB#4
368	5697.6446	4626.2249		SRB#4
370	5697.6034	4556.1359		SRB#4
371	5697.8666	4276.2186		SRB#4
372	5697.7299	4486.1812		SRB#4
373	5697.9248	4346.3049		SRB#4
500	5669.9800	4967.9300		NAIL
501	5600.4582	4712.0276		STA501
502	5239.3941	4553.9176		STA502
503	5145.7439	3972.1298		STA503
504	5205.0515	3676.6956		STA504
505	5677.8301	4718.3656		STA505
600	5523.5371	2431.3144		STA600
601	5005.4249	2362.8966		CTR
602	5678.4072	4168.2927	147.3977	NAIL
603	7633.4154	2360.5109		N1/4COR
700	5301.1290	3589.0775		1/2IRON
701	5002.5137	4248.0096		3/4IRON
702	5001.8340	4398.9762		3/4IRON
703	5000.0555	4820.4227		#4 TTLSI
800	5039.4720	3948.9250	127.3300	PKNAIL
801	5031.1857	4550.9375		
802	5036.2170	4818.3600	128.8100	PK NAIL

PT	NORTH	EAST	ELEV	DESC
1000	4181.1712	5110.4561	0.0000	"Ex. MH, Line 1"
1001	4266.0027	5159.3365	0.0000	Sta. 0+97.91
1002	4266.0027	5417.1836	0.0000	Sta. 3+55.76
1003	4541.3166	5110.1468	0.0000	"Ex. MH, Line 2"
1004	4541.3013	5122.9443	0.0000	Sta. 0+12.80



<b>Baughman</b>		Lillie 2nd Addition <b>Staking Coordinates</b> Sanitary Sewer Improvements	
Baughman Company, P.A. 315 Ellis St. Wichita, KS 67211 P 316-262-7271 F 316-262-0149 ENGINEERING   SURVEYING   PLANNING   LANDSCAPE ARCHITECTURE			
PROJECT NUMBER 468-84081	DESIGN MWS	DRAWN MWS	DATE 06/2007
REVISIONS:	APPROVED	SCALE Noted	SHEET <b>5 OF 11</b>