

PLAN	CHECKED	CHECKED
BY		
DATE		

PROFILE	CHECKED	CHECKED
BY		
DATE		

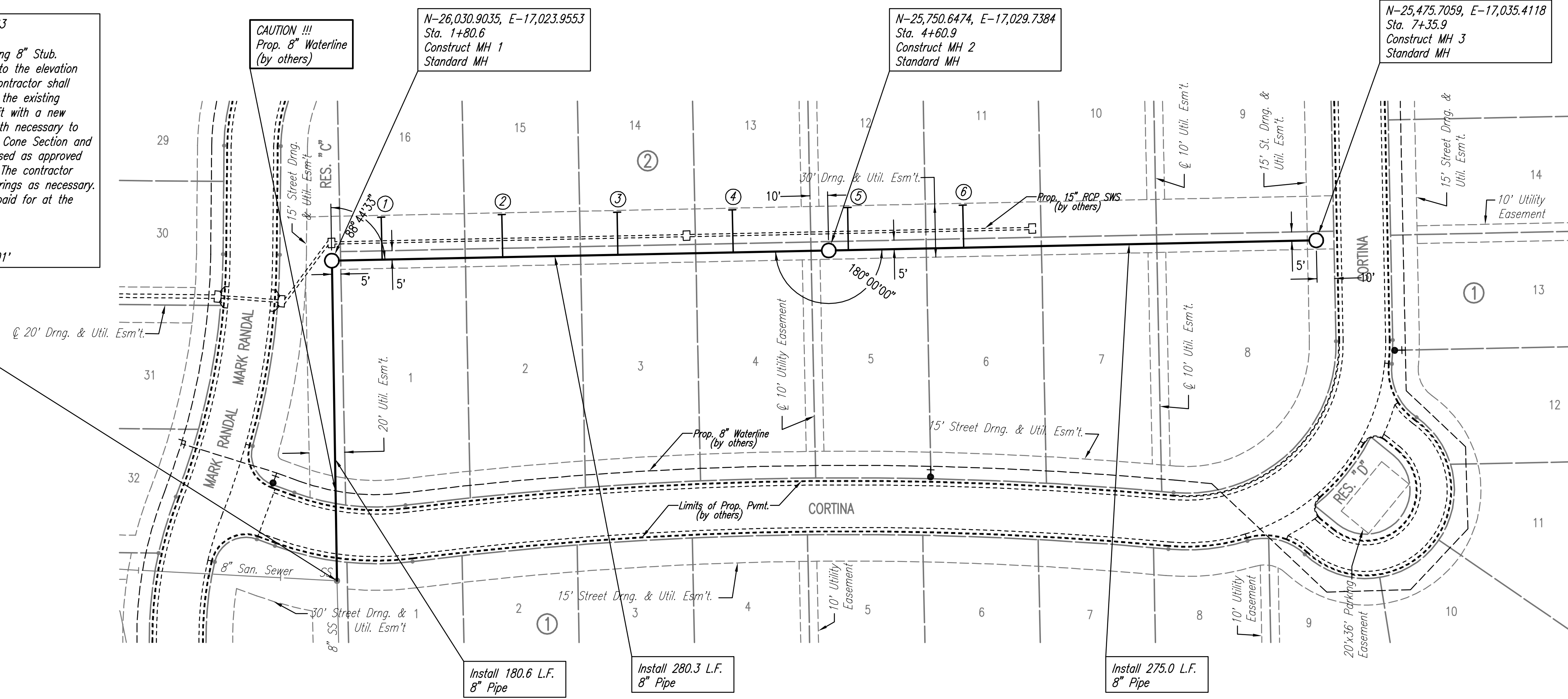
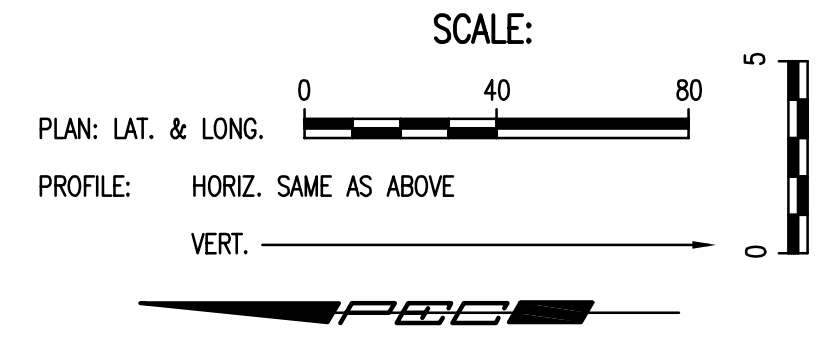
N-26,027.9890, E-16,843.3863  
Sta. 0+00.0  
Connect new 8" Pipe to existing 8" Stub.  
Adjust manhole top elevation to the elevation provided in the profile. The Contractor shall remove a barrel section from the existing Precast Manhole and replace it with a new Precast Barrel Section of length necessary to match adjusted elevation. The Cone Section and Frame and Cover may be reused as approved by the Construction Engineer. The contractor shall provide new adjustment rings as necessary. Manhole adjustment shall be paid for at the contract unit price per each.  
Exist. MH Elev. = 172.89  
Prop. MH Elev. = 174.9  
Difference in elevation = +2.01'

CAUTION !!!  
Prop. 8" Waterline  
(by others)

N-26,030.9035, E-17,023.9553  
Sta. 1+80.6  
Construct MH 1  
Standard MH

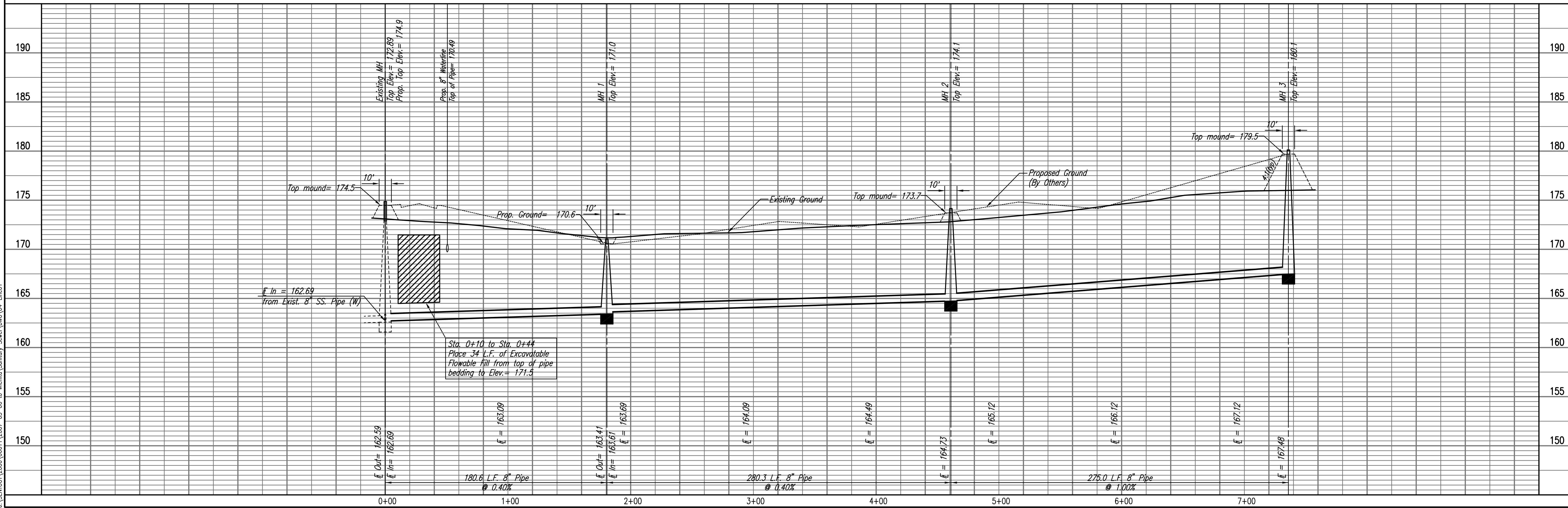
N-25,750.6474, E-17,029.7384  
Sta. 4+60.9  
Construct MH 2  
Standard MH

N-25,475.7059, E-17,035.4118  
Sta. 7+35.9  
Construct MH 3  
Standard MH



SANITARY SEWER LINE NO. 1

① ②  
DENOTES SEWER SERVICE.  
SEE SHEET NO. 9 FOR SEWER  
SERVICE SCHEDULE AND DETAILS



Sewer 03-06-2007 9:02:48 AM by BEJ  
Plot Scale 1:40 03-06-2007 10:02:31 AM by BEJ  
J:\SENTOU\2006\0611\2007-03-06 to Wichita\Sanitary Sewer\DWG\04-Line01

LATERAL 10, MAIN 7  
OF THE NORTHWEST INTERCEPTOR  
SANITARY SEWER LINE NO. 1

Professional Engineering Consultants, P.A.  
303 S. TOPICKA AVENUE, KANSAS CITY, MO 64108  
316-262-2691 • FAX 316-262-3003

Job No. 35-06611-001  
Date November 2006

Designed By MDK  
Drawn By RFT

Sheet 4 of 14