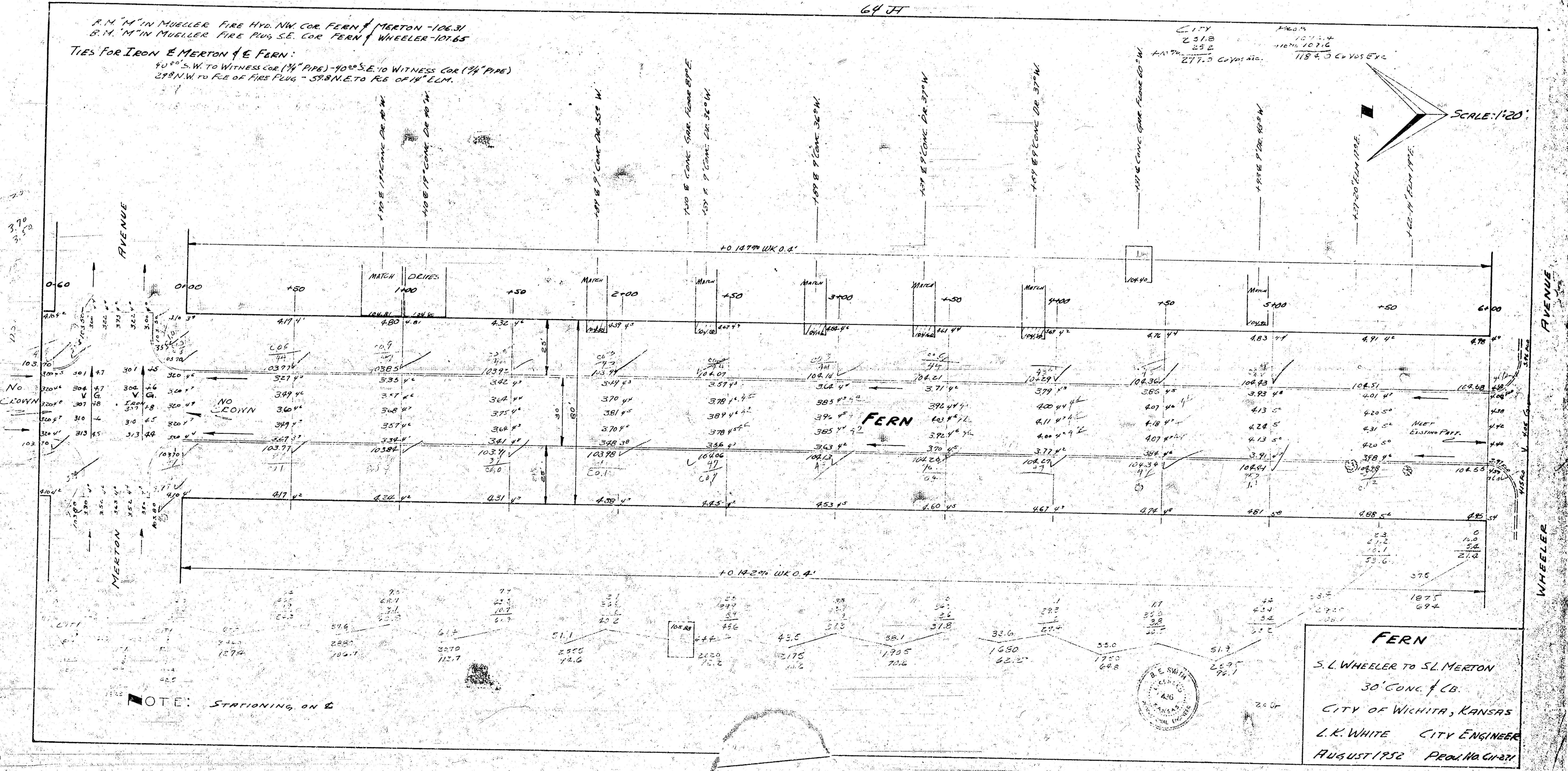
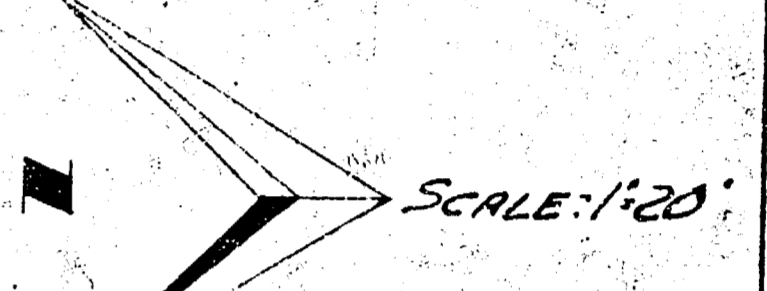


64 FT

R.M. "M" IN MUELLER FIRE HYD. NW COR. FERN / MERTON - 106.31  
R.M. "M" IN MUELLER FIRE PLUG S.E. COR. FERN / WHEELER - 107.65

TIES FOR IRON & MERTON & E FERN:  
90° S.W. TO WITNESS COR (1/4" PIPE) - 90° S.E. TO WITNESS COR (1/4" PIPE)  
289' N.W. TO R.E. OF FIRE PLUG - 588' N.E. TO R.E. OF "M" E.C.M.

CITY 2318  
35 E  
277.5 C.V. 200' W.  
MERTON 1184.5 C.V. 200' E.W.



NOTE: STATIONING ON E



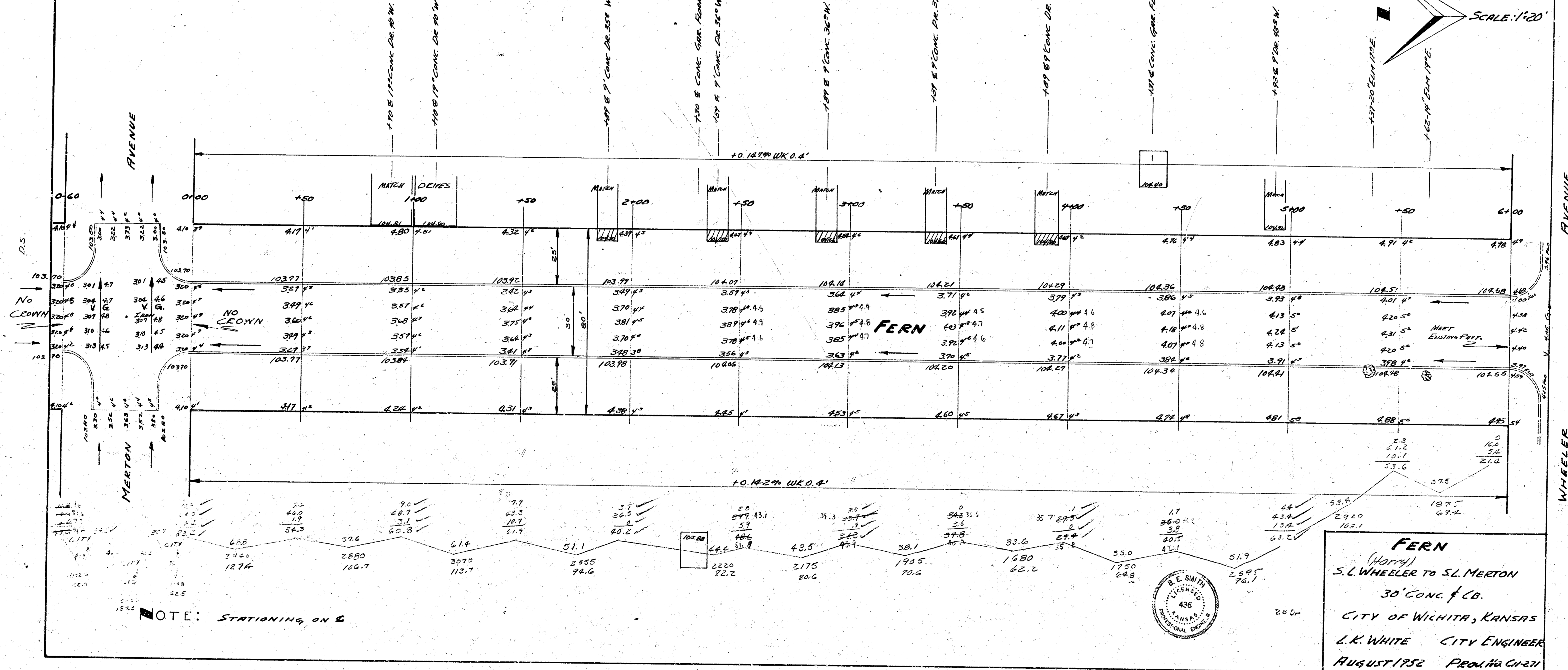
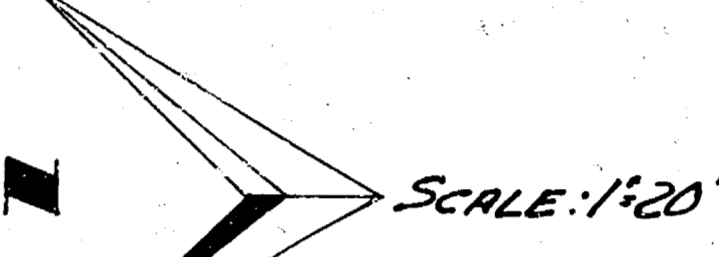
**FERN**  
S. L. WHEELER TO S. L. MERTON  
30' CONC. F.C.B.  
CITY OF WICHITA, KANSAS  
L. K. WHITE CITY ENGINEER  
AUGUST 1950 PEORIA ILL. CH. 201

64 FT

8.11" IN MUELLER FIRE HYD. NW COR. FERN / MERTON -106.31  
 8.11" IN MUELLER FIRE PUG. S.E. COR. FERN / WHEELER -107.65

TIES FOR IRON & MERTON & E. FERN:  
 10° S. W. TO WITNESS COR. (1 1/4" PIPE) - 90° S. E. TO WITNESS COR. (1 1/4" PIPE)  
 279' N. W. TO P.E. OF FIRE PUG. - 578' N. E. TO P.E. OF 11" C.C.M.

CITY FROM  
 254.8 1076.4  
 252 1106.1076  
 277.0 1185.0 C+YAS ETC



**FERN**  
 (WHEELER)  
 S. L. WHEELER TO S. L. MERTON  
 30' CONC. & CB.  
 CITY OF WICHITA, KANSAS  
 L. R. WHITE CITY ENGINEER  
 AUGUST 1932 PROJ. NO. C1271