

General Notes

1. Contractor will be required to provide notice to utility companies a minimum of twenty-four (24) hours prior to any excavation, as follows:

Kansas One-Call 687-2470

The Contractor must notify the following in case of an emergency:

Cablevision 262-4270
 or 263-2061
 K.P.L. Gas Service Company 263-7511
 Kansas Gas & Electric Company 264-1141
 Arkla Gas Company 942-8350
 or 263-8161
 Southwestern Bell Telephone Company 1-571-2611
 City of Wichita Water Department 268-4908
 City of Wichita Sewer Maintenance 268-4071

2. Utility service lines, poles, valve boxes, meters, and etcetera are to be adjusted as necessary by others prior to construction unless the plans specifically call for their adjustment by the Contractor or unless the plans specifically identify a utility to be adjusted by its owner during construction. Existing utilities and their location, as shown on the plans, represent the best information obtainable for design. The contractor will be required to work around existing utilities within the right-of-way which do not conflict with proposed construction.

3. Rubble from the removal of miscellaneous structures and excess excavation which is to be wasted shall be disposed of on sites to be provided by the Contractor. These sites shall be approved by the Engineer as to suitability, appearance and site location. Locations that, in the opinion of the Engineer, will leave an unsightly appearance will not be approved. All disposal sites must be approved by the Kansas Department of Health and Environment. Material either stockpiled or disposed of in a flood plain would require a Kansas State Board of Agriculture permit. Any material dumped in waters of the United States or wetlands is subject to U.S. Corps of Engineers permitting regulations. Any material buried or stockpiled beyond approved construction limits would require additional archaeological investigations unless buried in a previously approved borrow location.

4. Trees and shrubs in public right-of-way which are in direct conflict with proposed new construction shall be removed by the Contractor with the Engineer's approval. Trees and shrubs which are not in direct conflict with proposed new construction shall be saved and protected from damage.

5. Limits of earthwork shall match existing ground elevations at the right-of-way line unless otherwise noted on the plans with a new finished grade elevation. When a new finished grade elevation is shown, the earthwork shall extend one foot beyond the right-of-way line and then sloped up or down using permissible slopes to match the existing ground surface.

6. The Contractor shall adjust water valve boxes and fire hydrants as directed by the Engineer at the price bid for said adjustments. The Water Department shall field locate water valves one time during construction when requested by Contractor. It shall be the Contractor's responsibility to preserve such field locations during the construction process. Water valves, water valve boxes or fire hydrants damaged during construction shall be repaired by the Contractor at his own expense.

7. The Contractor shall be responsible for preserving property irons. The Contractor will be required to re-establish any property irons which are damaged or destroyed by his construction operations. Such irons shall be re-established by a licensed land surveyor in accordance with state law.

8. This project does not include any provisions for construction of driveways.

9. All areas disturbed by construction shall be seeded at 300 lbs./acre with Rye Grass immediately following construction in that area.

10. The bid item site restoration shall include all finished grading, final site grading, all erosion construction items and any other items as necessary for final completion and acceptance of project.

11. A saw cut of at least one-half the depth of existing surface courses or one-fourth the depth of the existing total pavement thickness shall be provided at locations where proposed construction abuts on an existing surface course or pavement for which partial removal of that surface or pavement is required. Sawed joint to facilitate removal within three (3) feet of existing joints will not be permitted and for such instances the limits of removal shall extend to the existing joint. Such saw cuts will not be paid for directly and this cost shall be considered as subsidiary to the removal of the surface or pavement.

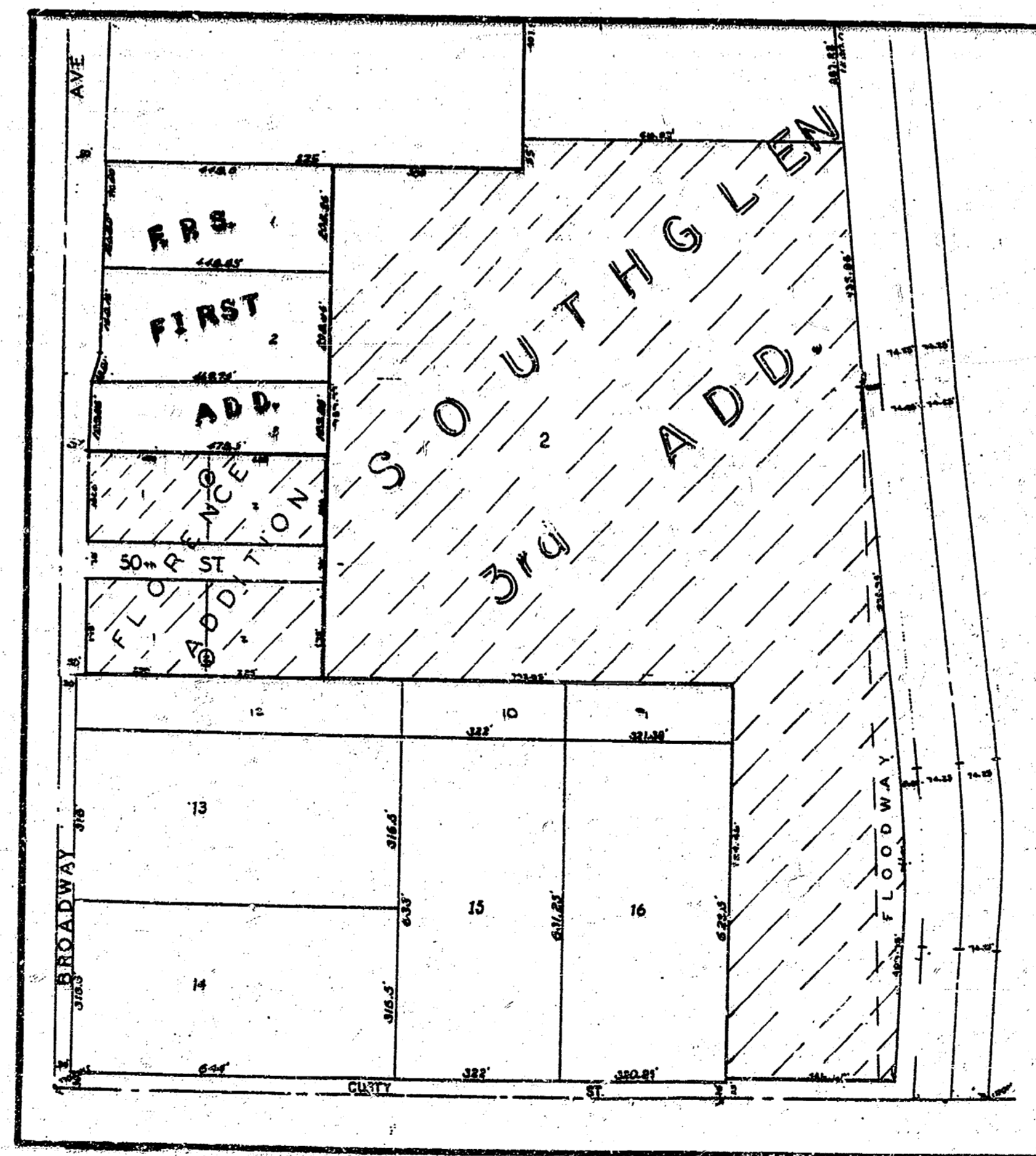
12. The Contractor shall notify pipeline companies at least 24 hours in advance of any work being performed over and/or adjacent to pipelines.

50th STREET SOUTH
E.L. of Broadway to & Including Cul-De-Sac
at the W.L. of South Glen 3rd Addition

Project Number
472-76-245-82006-000-000-001

Index Code
763102

CITY OF WICHITA, KANSAS
Michael E. Lindebak, City Engineer

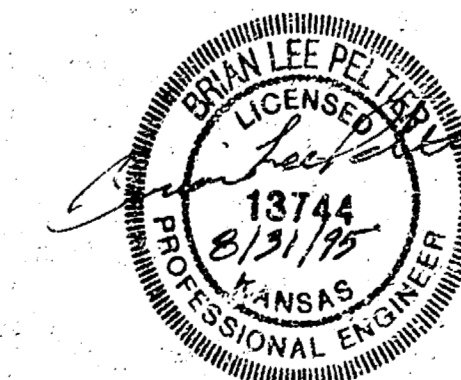


 IMPROVEMENT DISTRICT

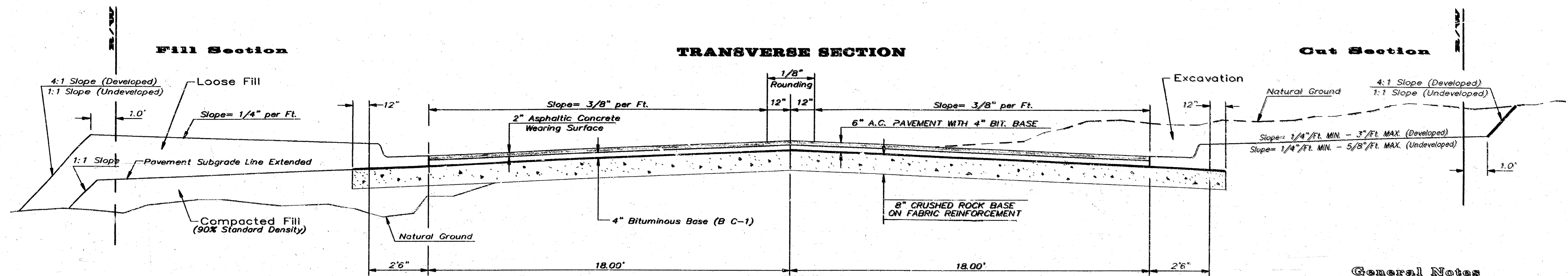
INDEX:

- 1 Title Sheet
- 2 4' Pavement Detail
- 3 Paving Plan
- 4 Cross Sections
- 5 Drainage Plan
- 6 Type I-A Inlet Detail
- 7 Plat

INCIDENTAL DRAINAGE
 BOOKED
 2-9-96
 Mcg
 D-279



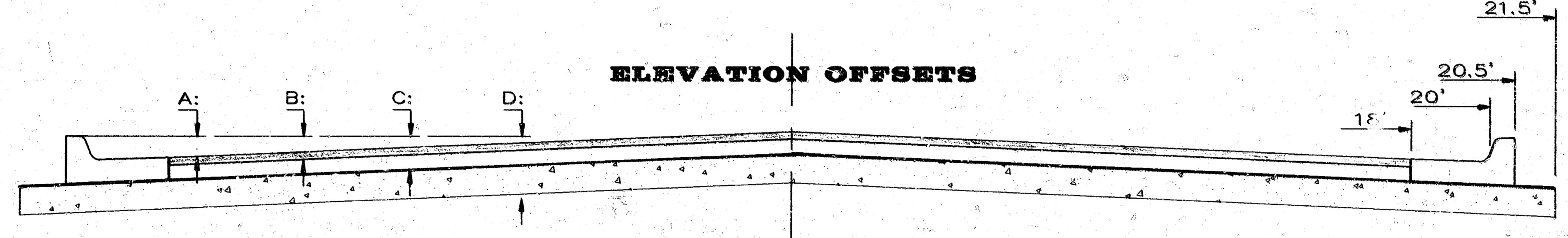
TYPICAL 41' B-B PAVEMENT DETAILS



CRUSHED ROCK GRADATION REQUIREMENTS
PERCENT OF AGGREGATE RETAINED

2-1/2"	0
3/4"	20 - 60
#4	50 - 80
#40	80 - 94
#200	90 - 98

ROCK QUALITY SHALL CONFORM TO THE REQUIREMENTS SPECIFIED BY THE KDOT 1990 EDITION STANDARD SPECIFICATION SUBSECTION 1102 FOR DURABILITY CLASS I.



DISTANCE FROM CENTERLINE (L.T. & RT.)

	0'	2'	4'	6'	8'	10'	12'	14'	16'	18'	20'	20.5'	21.5'
A: Top of Curbs to Top of Surface Lift	-.05	-.01	0.05	0.11	0.18	0.24	0.30	0.36	0.43	0.49	-	-	-
B: Top of Curbs to Top of Upper Base Lift	0.11	0.16	0.22	0.28	0.34	0.40	0.47	0.53	0.59	0.65	-	-	-
C: Top of Curbs to Top of C. R. Subgrade	0.43	0.48	0.55	0.61	0.67	0.73	0.80	0.86	0.92	0.98	1.05	1.06	1.07

General Notes

FABRIC BASE REINFORCEMENT SHALL BE B X 1100 BY TENSAR CORPORATION OR LBO201 BY TENAX CORPORATION OR APPROVED EQUAL. FABRIC BASE REINFORCEMENT SHALL BE INSTALLED IN ACCORDANCE WITH MANUFACTURER'S RECOMMENDATIONS.

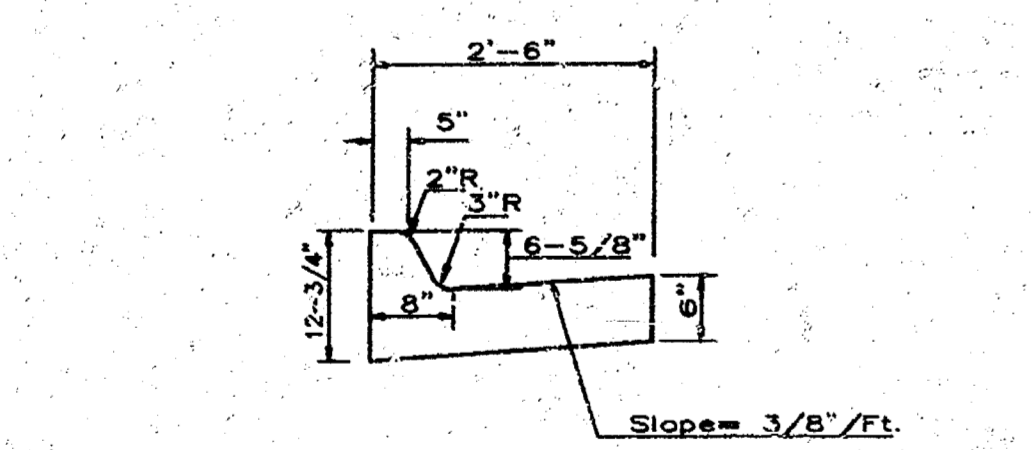
ROCK BASE IS TO BE COMPACTED AND SMOOTHED WITH A STEEL FACED ROLLER PRIOR TO PLACEMENT OF ASPHALT. TACK COAT WILL NOT BE APPLIED TO ROCK BASE.

A TACK COAT OF EMULSIFIED ASPHALT (SC-1H OR CSS-1H) SHALL BE APPLIED AT AN APPROXIMATE RATE OF 0.05 GALLONS PER SQUARE YARD BETWEEN EACH LIFT OF ASPHALTIC MATERIAL.

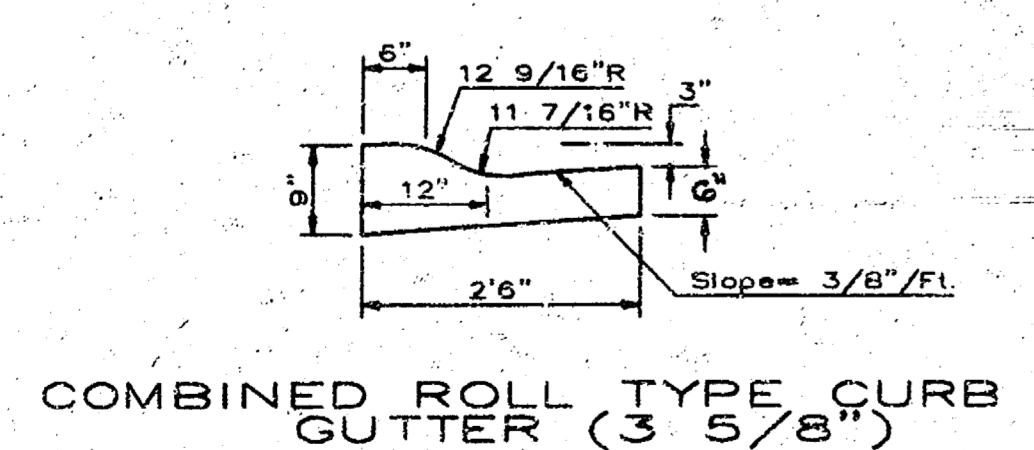
BITUMINOUS BASE AND ASPHALTIC CONCRETE WEARING SURFACE SHALL BE PLACED WITH A LAYDOWN MACHINE HAVING AUTOMATIC CONTROLS FOR LINE AND GRADE.

CONSTRUCTION JOINTS IN EACH LIFT SHALL BE STAGGERED A MINIMUM DISTANCE OF ONE (1) FOOT FROM JOINTS IN PRECEDING LIFTS AND PLACED SO THAT A JOINT WILL BE CONSTRUCTED ON THE CENTERLINE OF THE TOP LIFT.

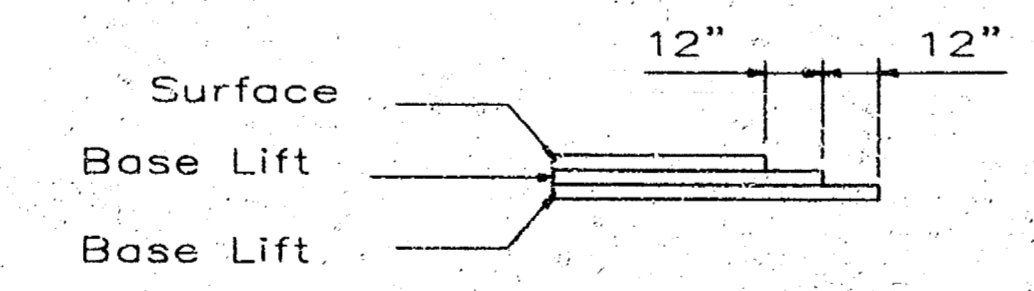
THE ASPHALTIC CONCRETE PAVEMENT BETWEEN THE COMBINED CURB AND GUTTER SHALL BE PAID AS SQUARE YARDS OF 6" ASPHALTIC CONCRETE (4" BITUMINOUS BASE).



COMBINED CURB & GUTTER

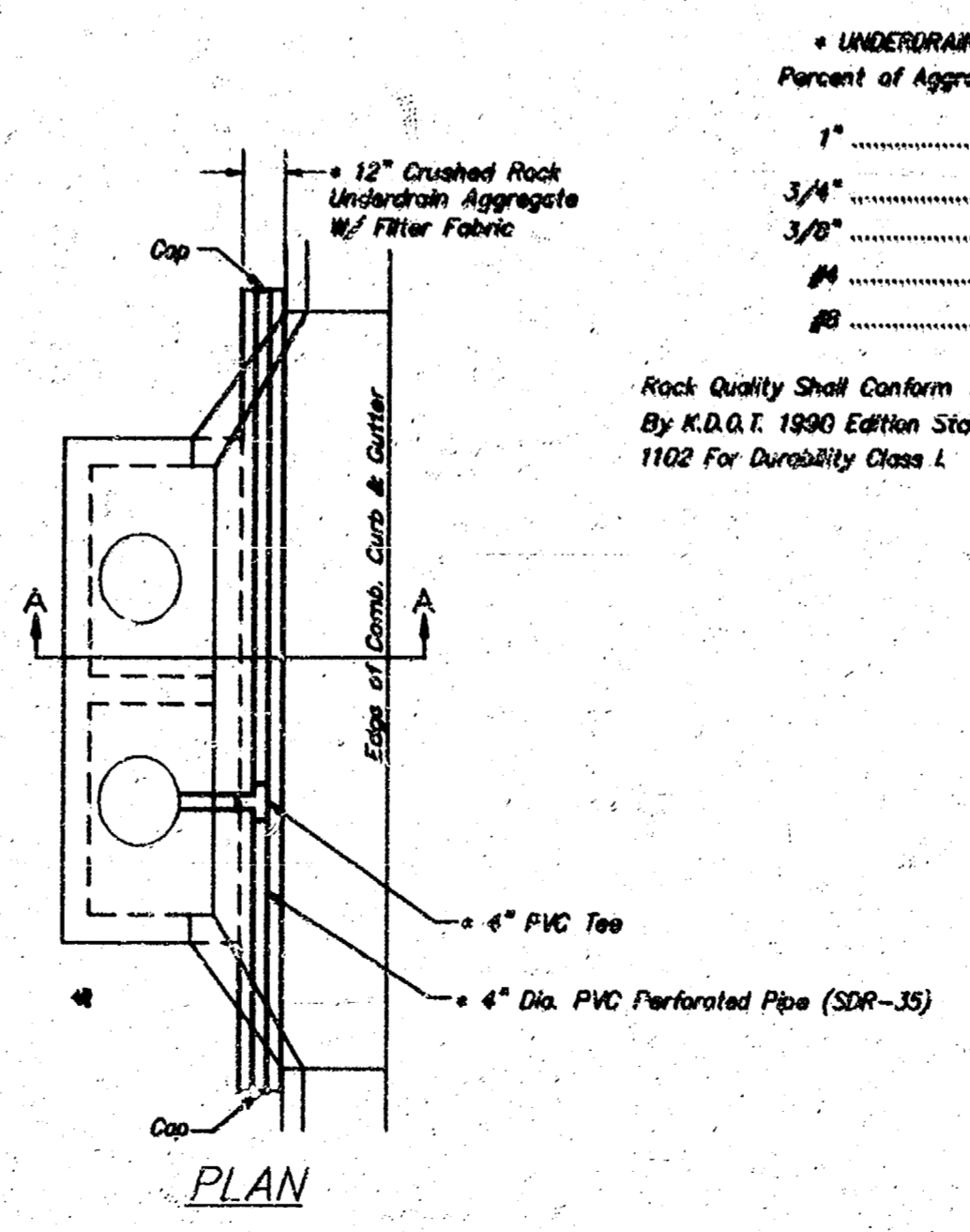


COMBINED ROLL TYPE CURB & GUTTER (3 5/8")



TRANSVERSE CONSTRUCTION JOINTS

Transverse construction joints shall be constructed in flexible base pavements at locations where pavement joints exist in existing flexible base pavement as shown by the detail. All costs associated with the construction of the transverse joint shall be included in the bid price for Square Yards of 6" ASPHALTIC CONCRETE (4" BITUMINOUS BASE).

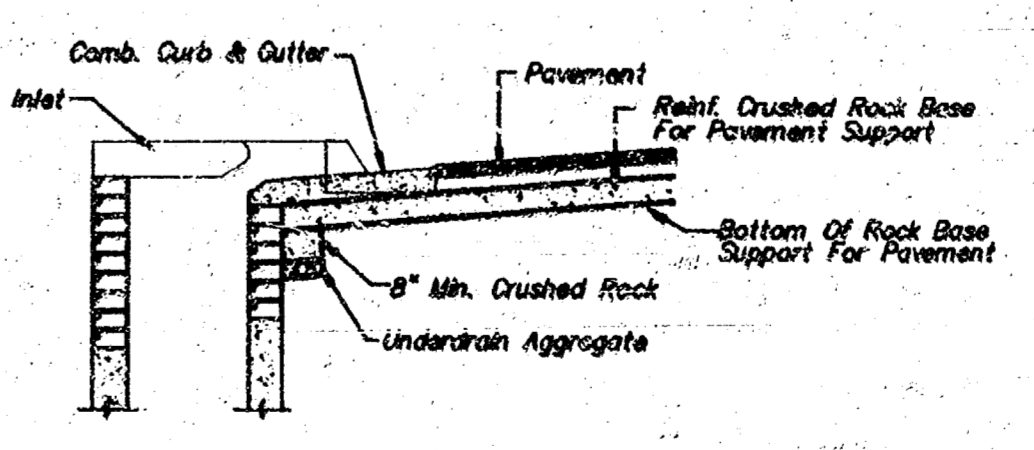


UNDERDRAIN AGGREGATE
Percent of Aggregate Retained

1"	0
3/4"	0 to 10
1/2"	45 to 80
#4	80 to 100
#20	85 to 100

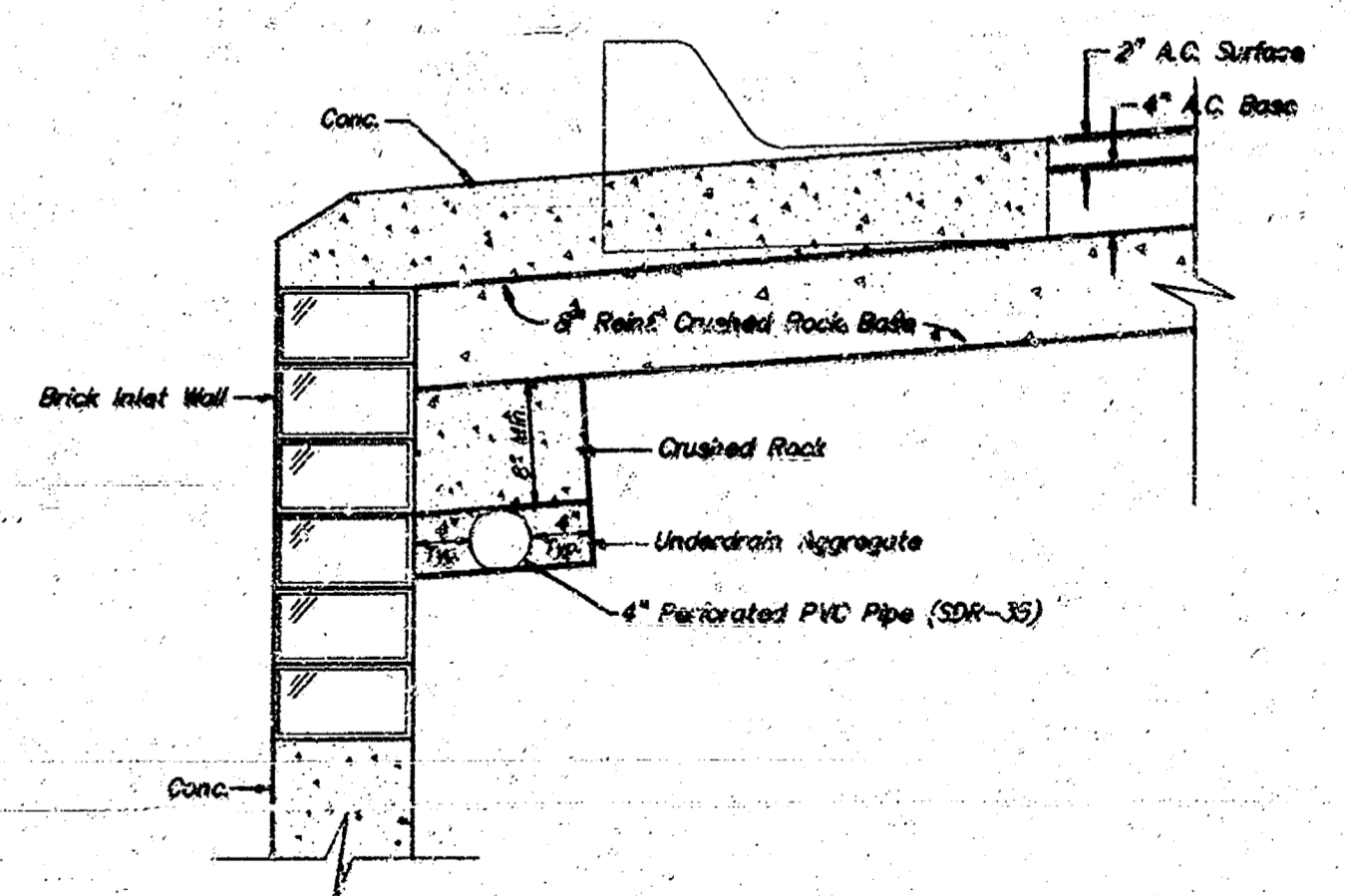
NOTE: Place 4" PVC Perforated Pipe at all drainage sump locations. Coat of Underdrain System to be incidental to the Reinforced Crushed Rock Subgrade. Inlet Type May Vary From That Shown.

Rock Quality Shall Conform To The Requirements Specified By K.D.O.T. 1990 Edition Standard Specification Subsection 1102 For Durability Class I.



SECTION A-A

PAVEMENT UNDERDRAIN DETAIL NOT TO SCALE



TRENCH DRAIN DETAIL FOR RES. STREETS NOT TO SCALE

6 INCH Asphaltic Concrete Pavement with Crushed Rock Base on Fabric Reinforcement
City of Wichita, Kansas

BAUGHMAN COMPANY P. A.
ENGINEERING & SURVEYING
316/262-7271 • 315 ELLIS • WICHITA, KANSAS 67211

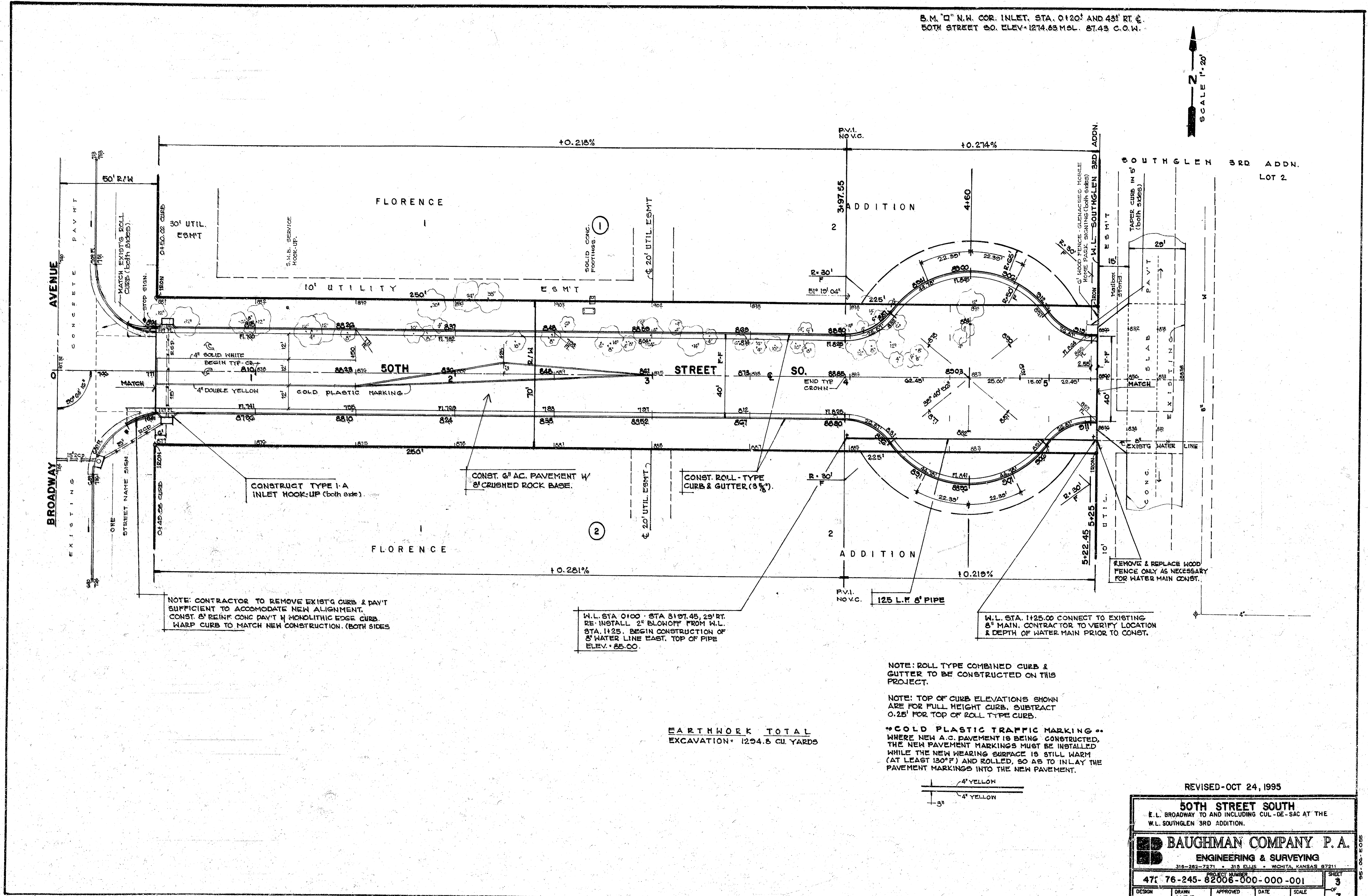
PROJECT NUMBER
472-76-245-82006-000-001

DESIGN: _____ DRAWN: Staff APPROVED: _____ DATE: Aug. 1995 SCALE: None

SHEET **2** OF **7**

B.M. "Q" N.W. COR. INLET, STA. 0+120.7 AND 45' RT. C.
 50TH STREET S.O. ELEV. 1274.83 M.S.L. 87.43 C.O.W.

SCALE 1" = 20'



NOTE: CONTRACTOR TO REMOVE EXIST'G CURB & PAV'T SUFFICIENT TO ACCOMMODATE NEW ALIGNMENT. CONST. 8\"/>

W.L. STA. 0+00 - STA. 3+97.45, 29' RT. RE-INSTALL 2\"/>

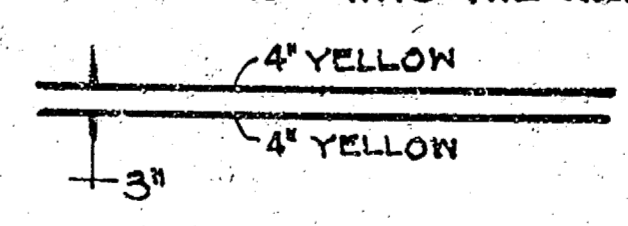
W.L. STA. 1+25.00 CONNECT TO EXISTING 8\"/>

NOTE: ROLL TYPE COMBINED CURB & GUTTER TO BE CONSTRUCTED ON THIS PROJECT.

NOTE: TOP OF CURB ELEVATIONS SHOWN ARE FOR FULL HEIGHT CURB. SUBTRACT 0.25' FOR TOP OF ROLL TYPE CURB.

COLD PLASTIC TRAFFIC MARKING WHERE NEW A.C. PAVEMENT IS BEING CONSTRUCTED, THE NEW PAVEMENT MARKINGS MUST BE INSTALLED WHILE THE NEW WEARING SURFACE IS STILL WARM (AT LEAST 130°F) AND ROLLED, SO AS TO INLAY THE PAVEMENT MARKINGS INTO THE NEW PAVEMENT.

EARTHWORK TOTAL EXCAVATION: 1294.5 CU. YARDS



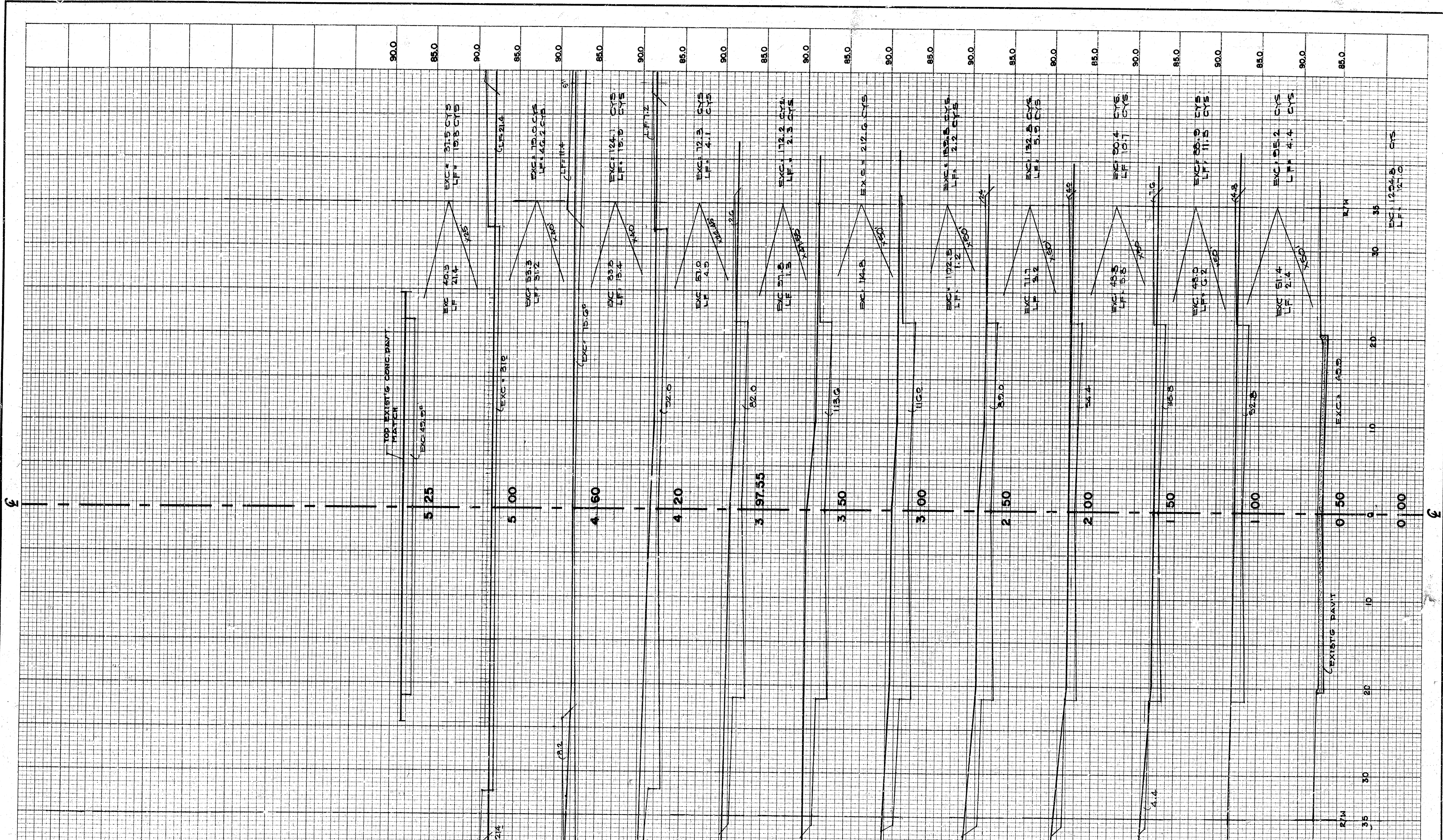
REVISED-OCT 24, 1995

50TH STREET SOUTH E.L. BROADWAY TO AND INCLUDING CUL-DE-SAC AT THE W.L. SOUTHGLEEN 3RD ADDITION.

BAUGHMAN COMPANY P. A.
 ENGINEERING & SURVEYING
 316-282-2271 • 316-244-2444 • WICHITA, KANSAS 67211

PROJECT NUMBER: 471 76-245-82006-000-000-001 SHEET 3 OF 7

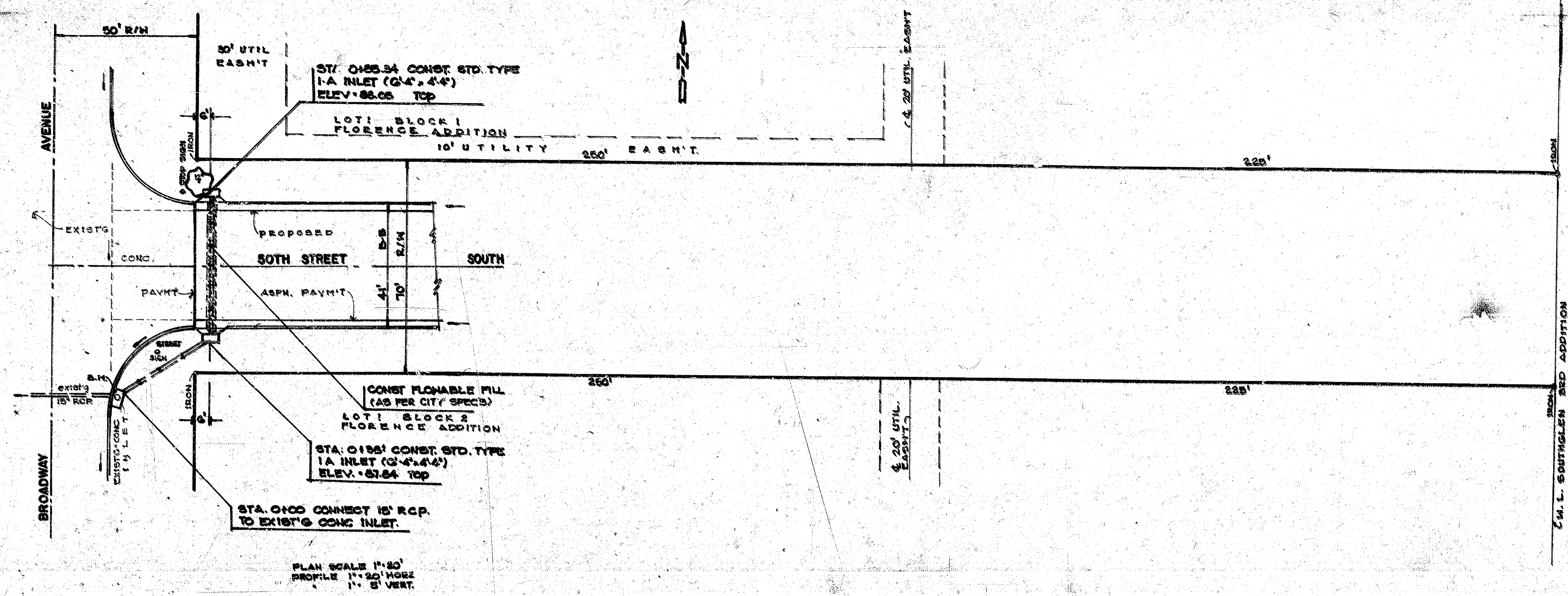
DESIGN: [] DRAWN: H.F.E. APPROVED: [] DATE: [] SCALE: []



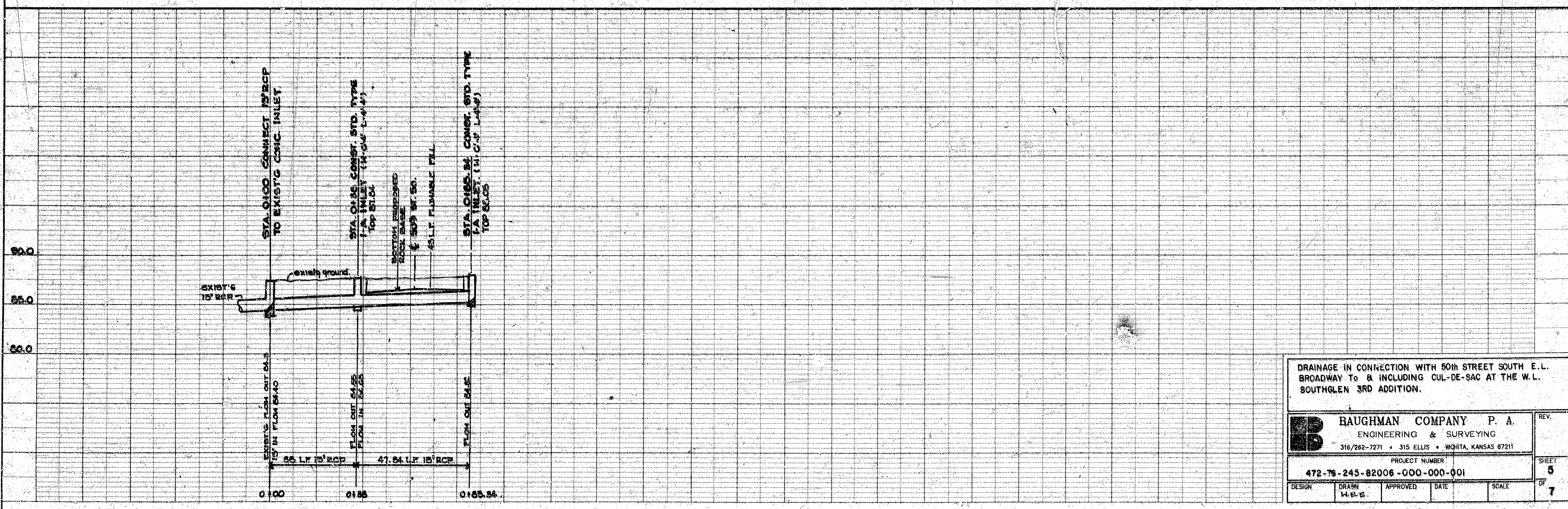
50TH STREET SOUTH

	BAUGHMAN COMPANY P. A. ENGINEERING & SURVEYING 316/262-47271 • 315 ELLIS • WICHITA, KANSAS 67211	REV.
	PROJECT NUMBER 472-76-245-82006-000-000-001	SHEET
	4/7	7

1/4" = 1' H.A. COR. UNK. 45' SOUTH & 50TH STREET SOUTH & E. CURB
 BROADWAY AVE. ELEV. 724.88 N.S.L. 9148 CO. W.

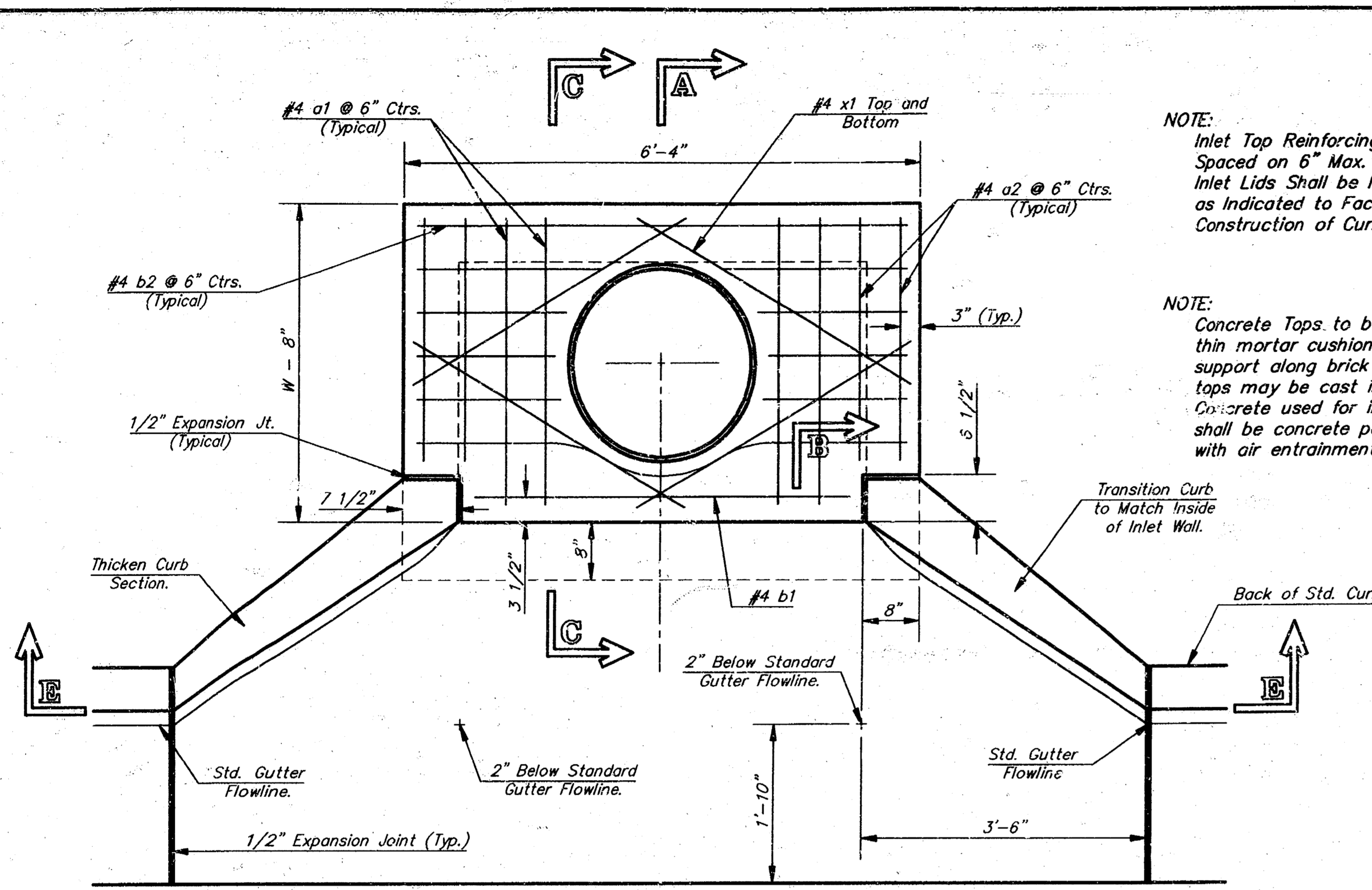


PLAN SCALE 1" = 20'
 PROFILE 1" = 20' HORIZ.
 1" = 5' VERT.



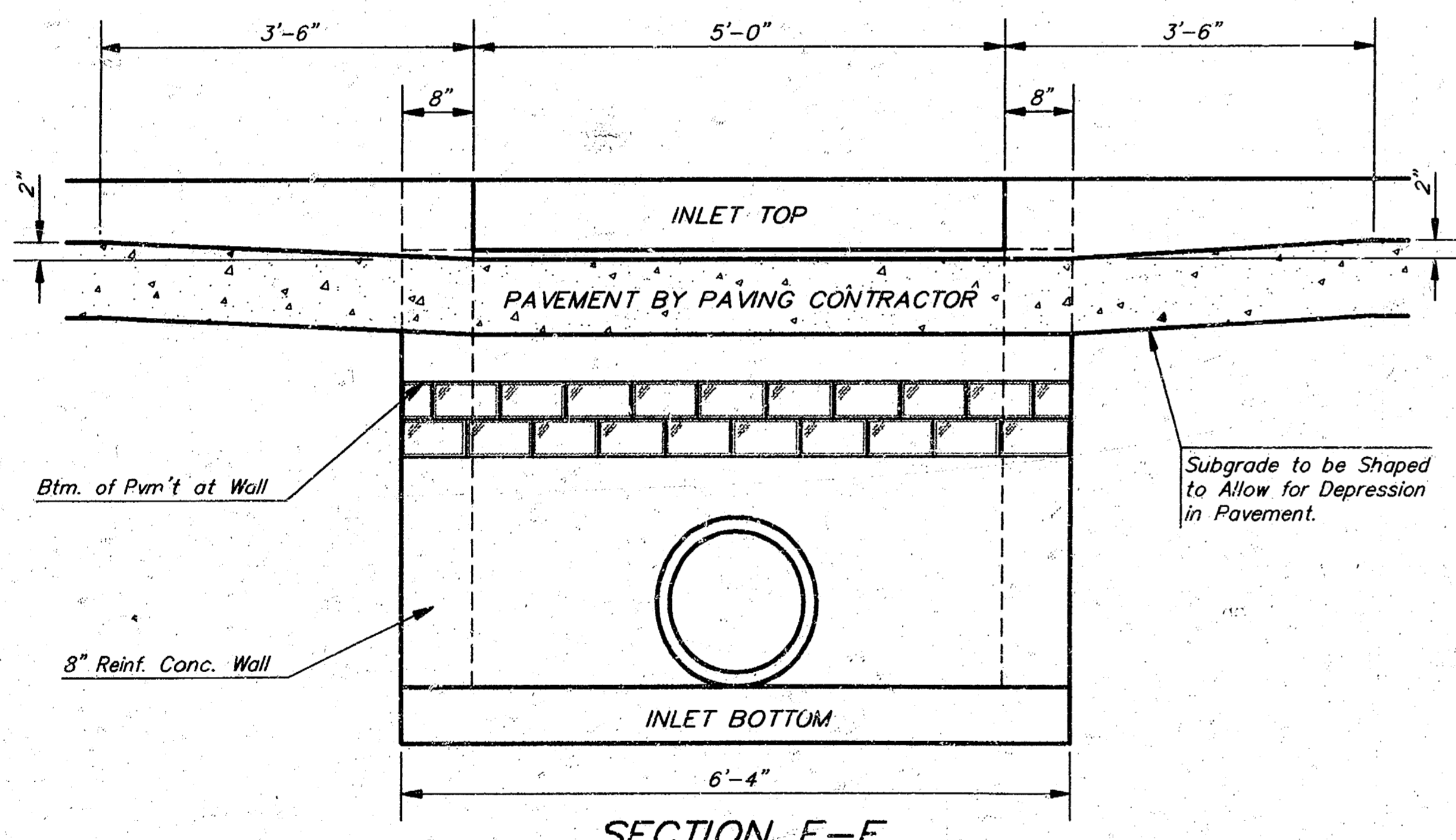
DRAINAGE IN CONNECTION WITH 50th STREET SOUTH E.L. BROADWAY TO B INCLUDING CUL-DE-SAC AT THE W.L. SOUTHGLEN 3RD ADDITION.

BAUGHMAN COMPANY P. A. ENGINEERING & SURVEYING 316/262-7271 • 315 ELLIS • WICHITA, KANSAS 67211		REV.
PROJECT NUMBER 472-78-245-82006-000-000-001		SHEET 5
DESIGN	DRAWN W.E.B.	APPROVED
DATE	SCALE	OF 7

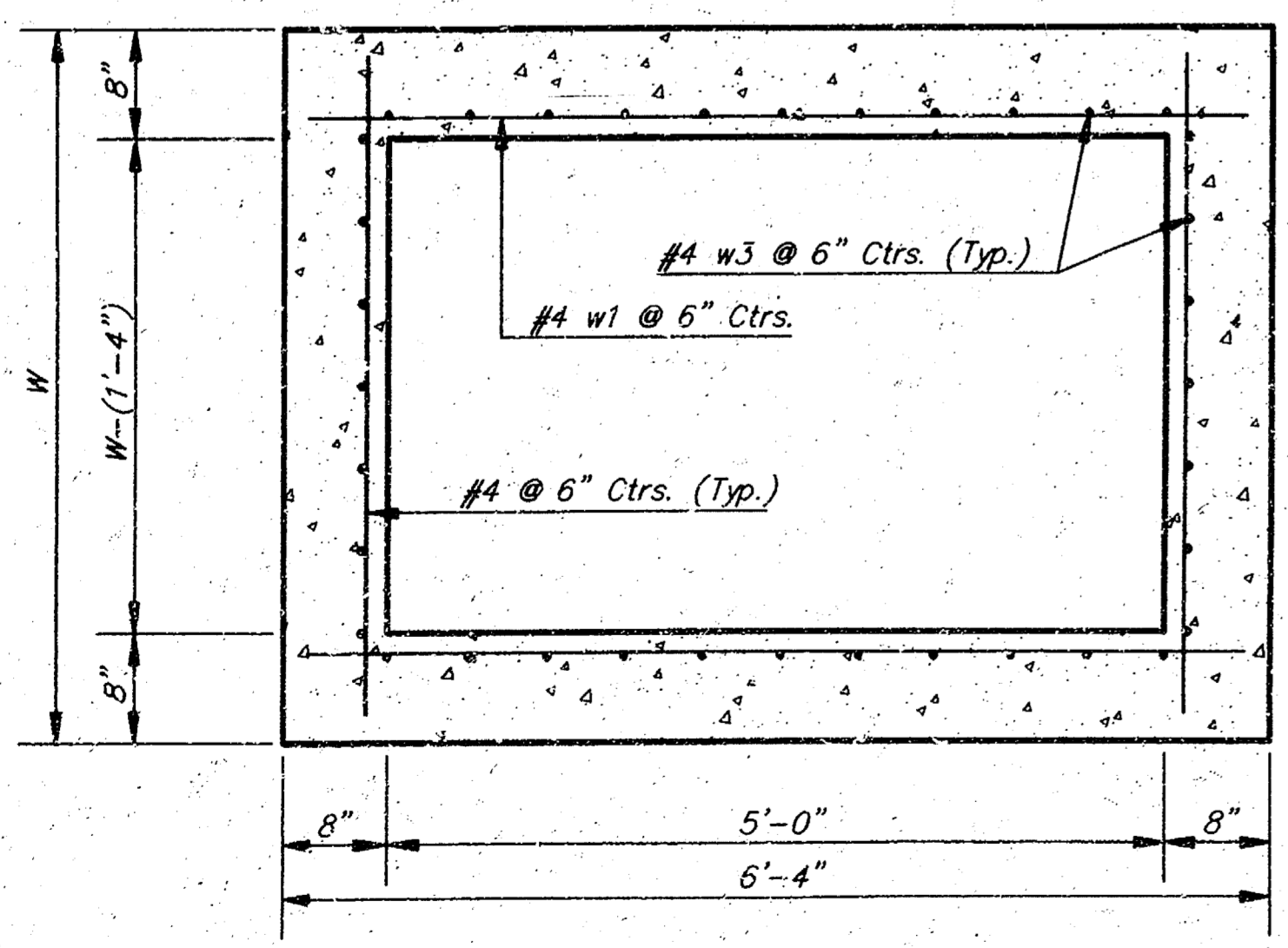


NOTE: Expansion Joint Only in Curb Area With Concrete Pavement.

PLAN



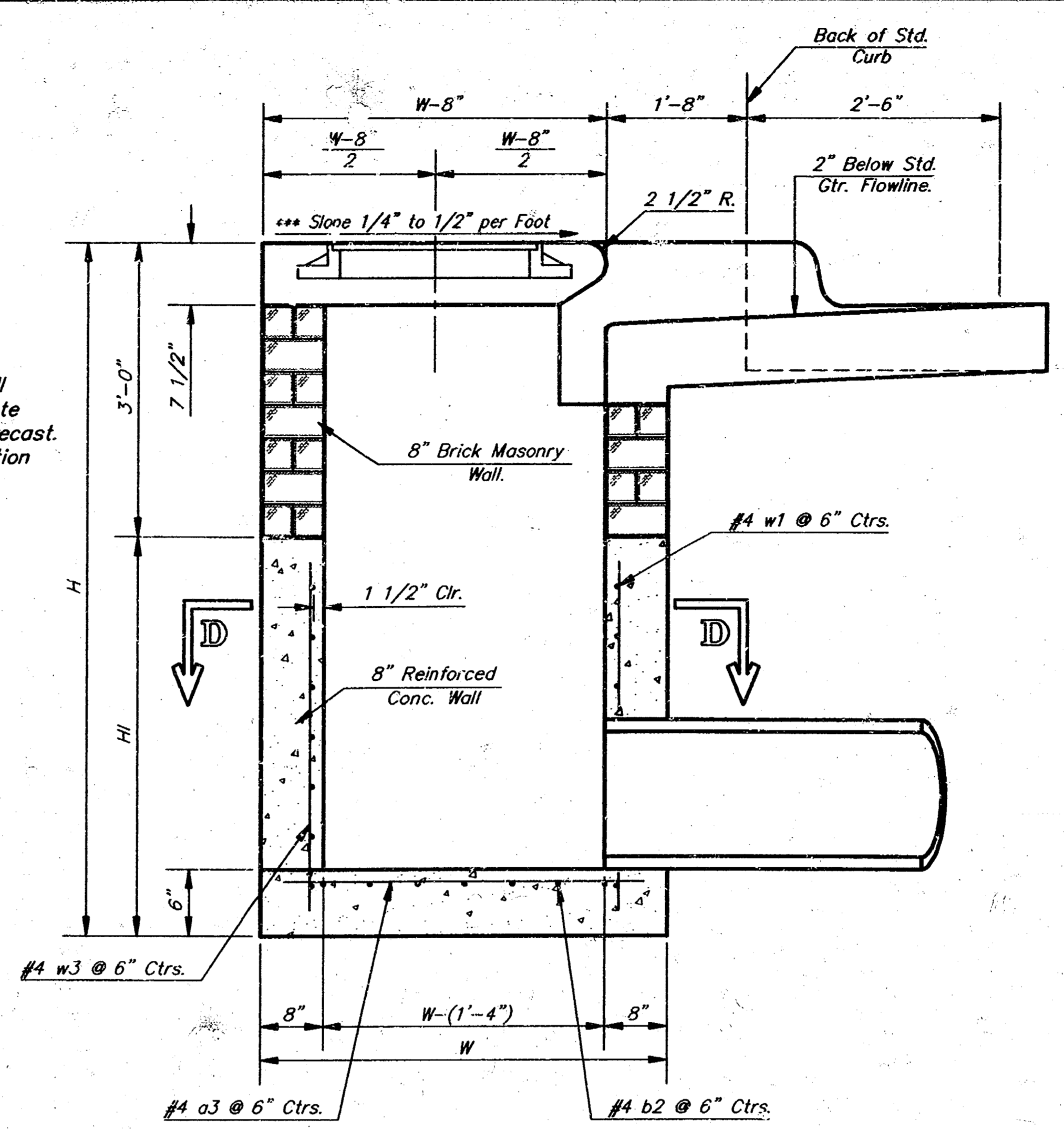
SECTION E-E



SECTION D-D

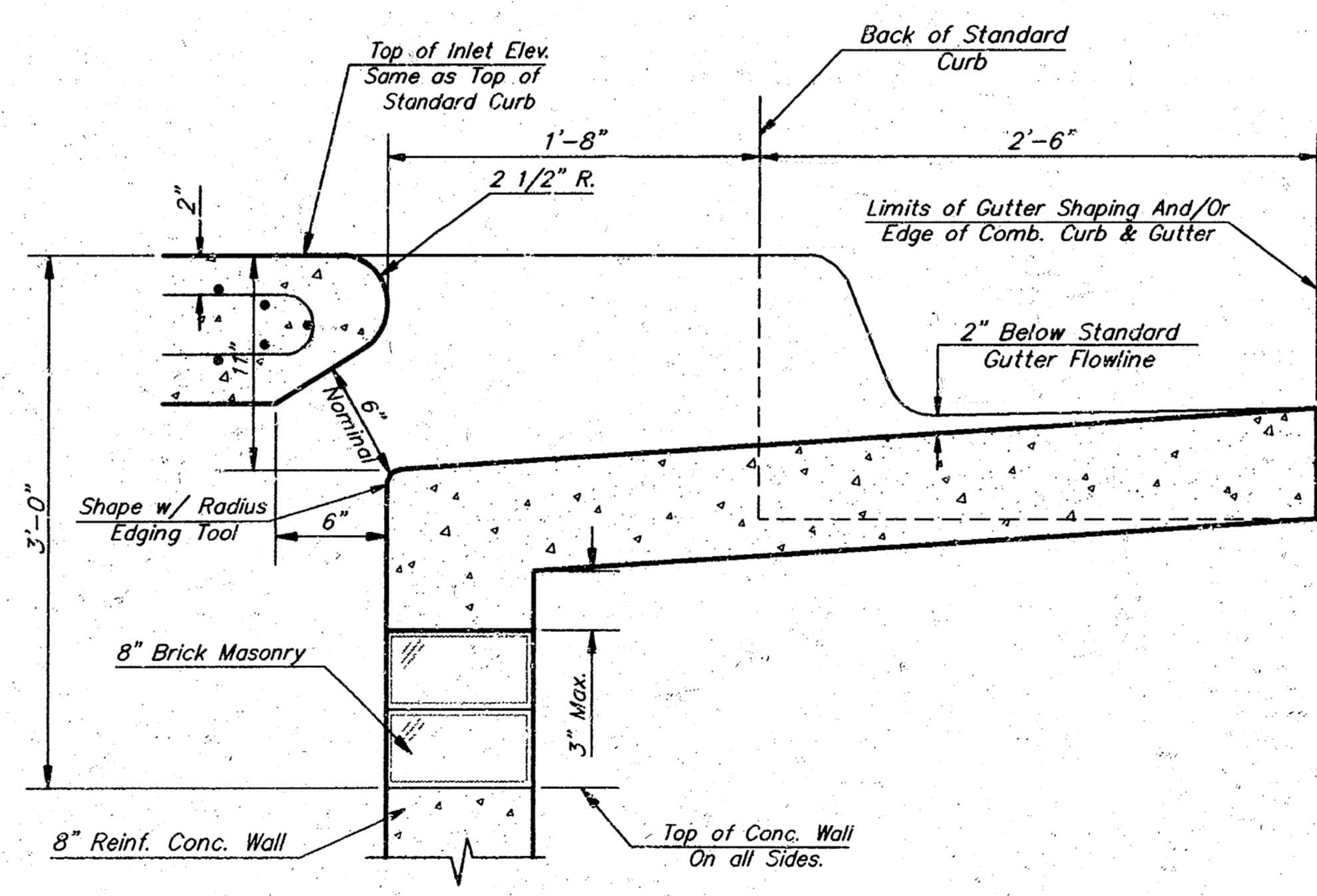
NOTE: Inlet Top Reinforcing shall be Spaced on 6" Max. Centers. Inlet Lids Shall be Notched Out as Indicated to Facilitate Construction of Curb.

NOTE: Concrete Tops to be installed on thin mortar cushion to insure full support along brick walls. Concrete tops may be cast in place or precast. Concrete used for inlet construction shall be concrete pavement mix with air entrainment.



SECTION A-A

NOTE: Slope of Inlet Tops to Match Sidewalk or Parking Slopes within Limits Indicated.



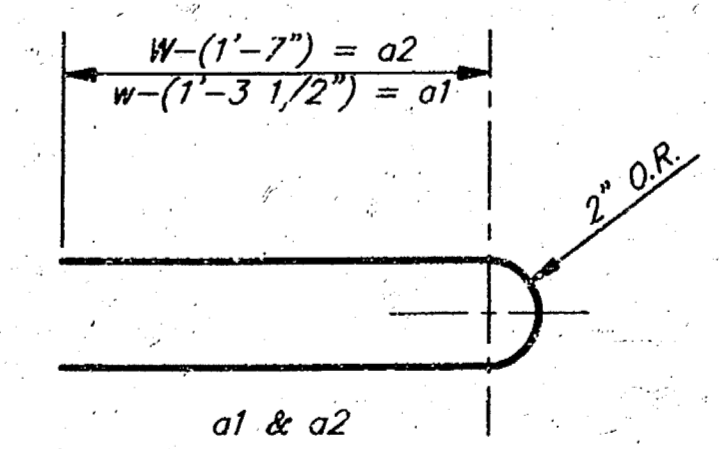
SECTION B-B

PRECAST SLAB AND FLOOR REINFORCING											
MARK	SIZE	W = 4'-4"		W = 5'-4"		W = 6'-4"		W = 7'-4"		W = 8'-4"	
		NO.	LENGTH	NO.	LENGTH	NO.	LENGTH	NO.	LENGTH	NO.	LENGTH
a1	#4	6	6'-2"	6	8'-2"	6	10'-2"	6	12'-2"	6	14'-2"
a2	#4	4	6'-0"	4	8'-0"	4	10'-0"	4	12'-0"	4	14'-0"
a3	#4	13	4'-1"	13	5'-1"	13	6'-1"	13	7'-1"	13	8'-1"
b1	#4	1	4'-9"	1	4'-9"	1	4'-9"	1	4'-9"	1	4'-9"
b2	#4	23	6'-1"	29	6'-1"	35	6'-1"	41	6'-1"	47	6'-1"
x1	#4	8	3'-10"	8	4'-2"	8	4'-6"	8	4'-10"	8	5'-2"

WALL REINFORCING

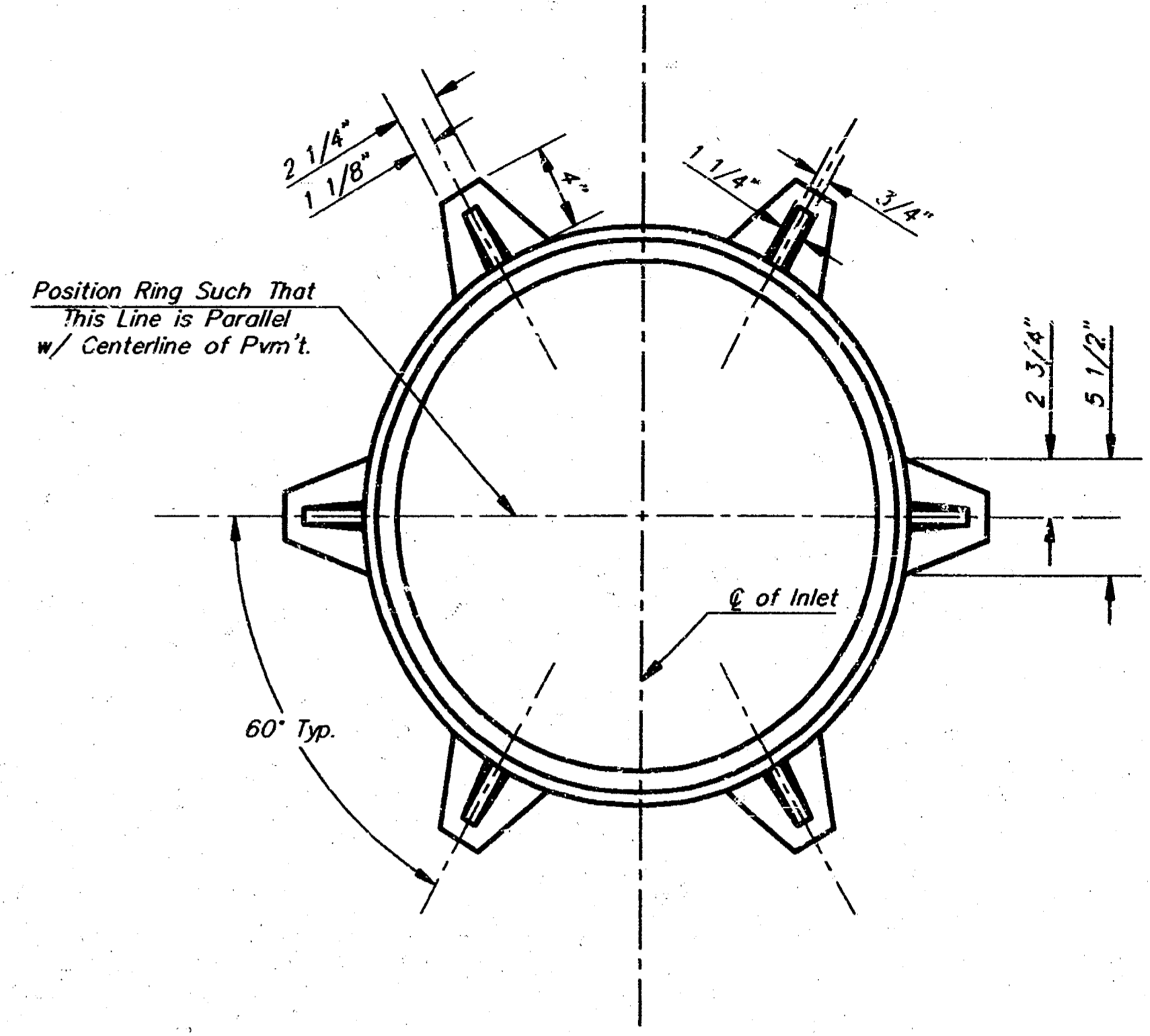
MARK	SIZE	W = 4'-4"		W = 5'-4"		W = 6'-4"		W = 7'-4"		W = 8'-4"	
		NO.	LENGTH	NO.	LENGTH	NO.	LENGTH	NO.	LENGTH	NO.	LENGTH
w1	#4	1	6'-1"	1	6'-1"	1	6'-1"	1	6'-1"	1	6'-1"
w2	#4	1	4'-1"	1	5'-1"	1	6'-1"	1	7'-1"	1	8'-1"
w3	#4	32	2"	36	2"	40	2"	44	2"	48	2"

* Field Bend or Cut Reinforcing as Required for Clearance.
 ① 4 (H = 12") (H = 21") Rounded down to nearest 0.5"
 ② H = 3"



BENDING DIAGRAM

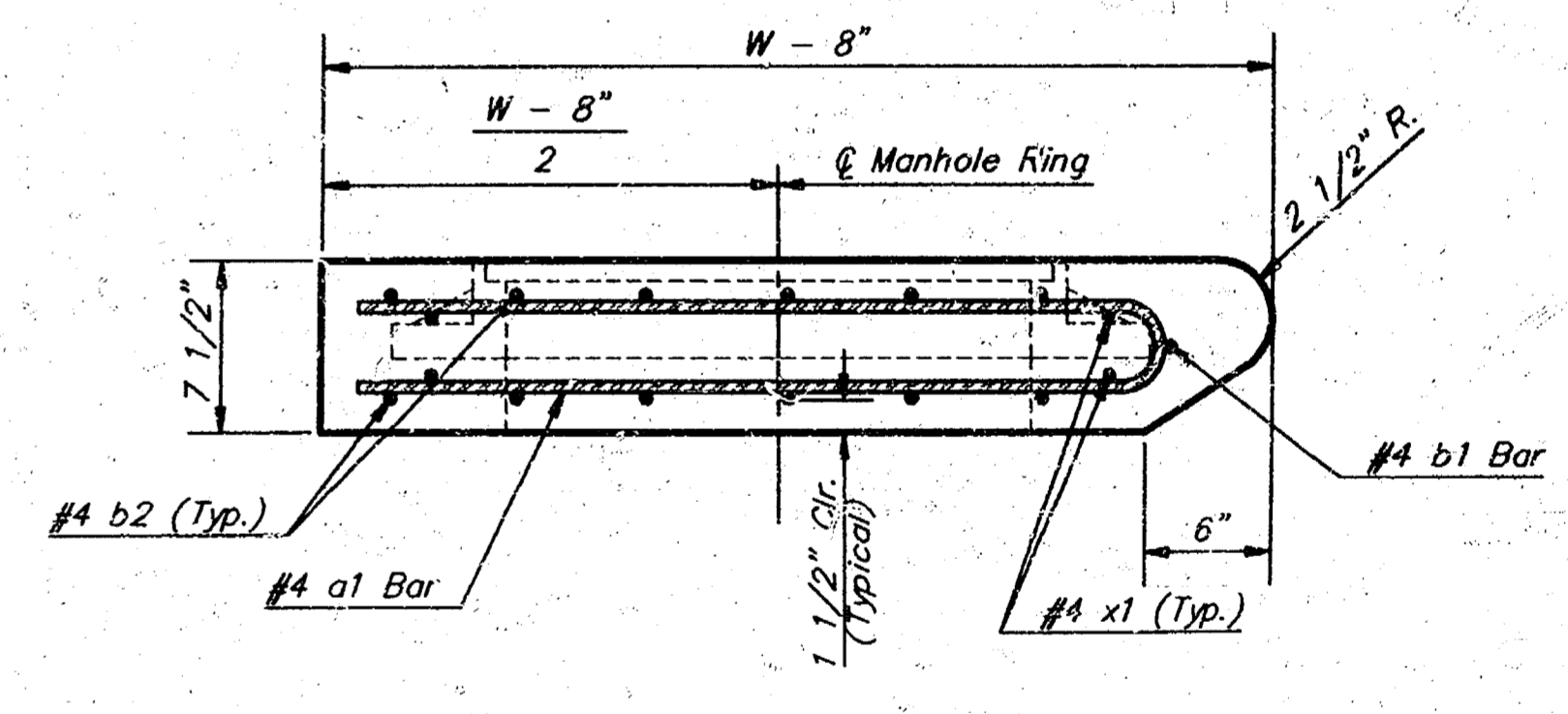
STANDARD CURB INLET PRECAST TOPS				
W	PRE-CAST TOP SIZE	PIPE SIZE	QI. YD. CONC.	
4'-4"	3'-8" x 6'-4" x 7 1/2"	21" & SMALLER	0.38±	
5'-4"	4'-8" x 6'-4" x 7 1/2"	24" & 30"	0.51±	
6'-4"	5'-8" x 6'-4" x 7 1/2"	36" & 42"	0.64±	
7'-4"	6'-8" x 6'-4" x 7 1/2"	48" & 54"	0.77±	
8'-4"	7'-8" x 6'-4" x 7 1/2"	60" & 66"	0.90±	



MANHOLE RING AND COVER

Weight = 180 Lbs.

*See City of Wichita Standard Manhole Ring and Cover Detail Sheet for Cover Details to Be Used With Inlet Frame.



SECTION A-A

Revised - Feb. 16, 1989

CITY OF WICHITA STANDARD TYPE 1A
Curb Inlet Details
 INLET OPENING - 8" x 5'-0"

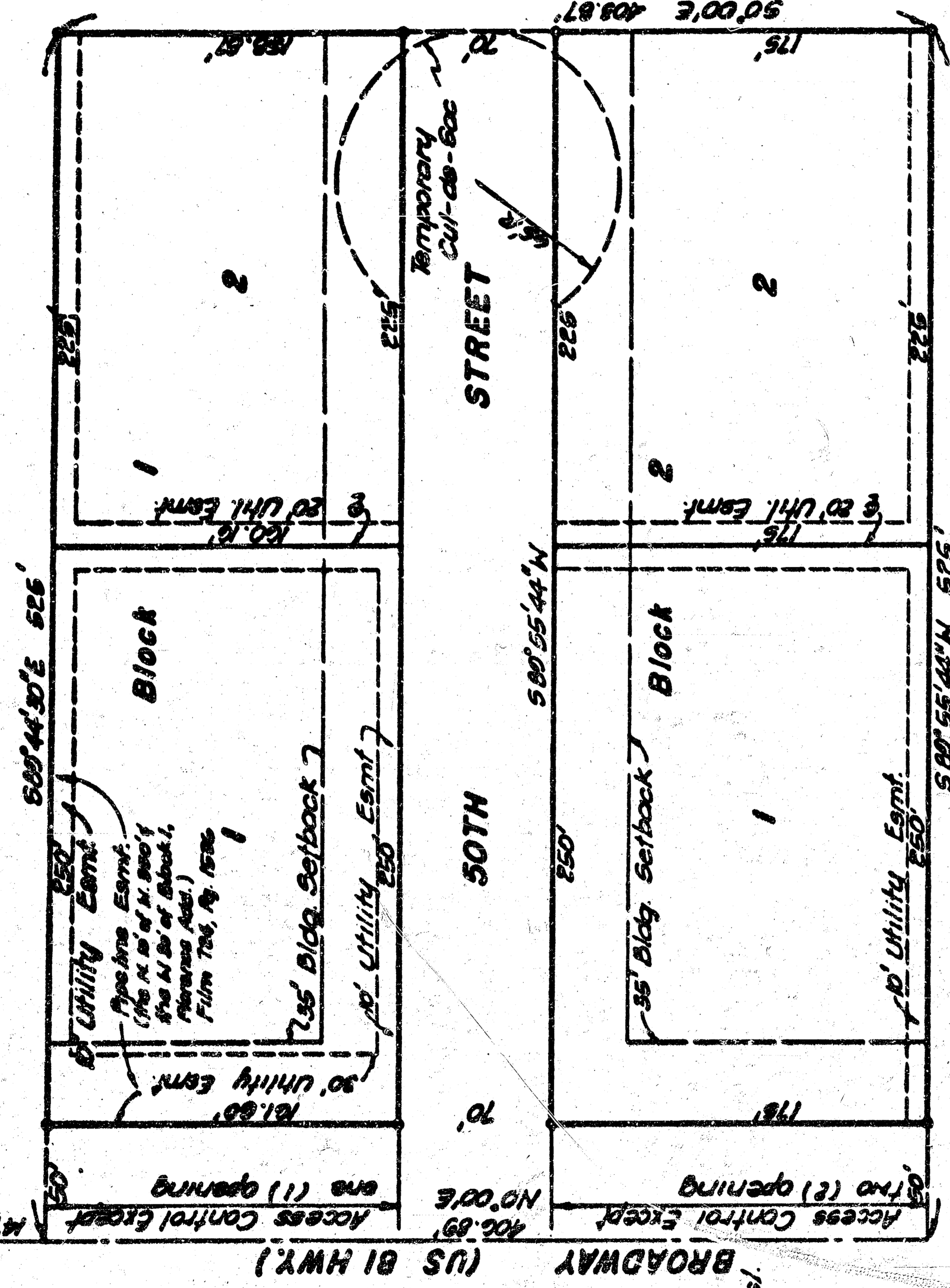
BAUGHMAN COMPANY P. A.
 ENGINEERING, SURVEYING, & PLANNING
 316-262-7271 • 315 ELLIS • WICHITA, KANSAS 67211

PROJECT NUMBER
472-76-245-82008-000-000-001

DESIGN: C.O.W. DRAWN: Staff APPROVED: DATE: SCALE: None SHEET: 6 OF 7

FLORENCE ADDITION TO WICHITA, SEDGWICK COUNTY, KANSAS.

N.M. Cor. Sec. 21, T8S, R1E of 6th P.M.



• - Iron Pd
○ - 1/2" Iron set
City B.M. disc 28' east of
28.5' north of N.M. Cor.
Sec 21, T8S, R1E of
6th P.M. E1-1274.243 mal.
October, 1904

STATE OF KANSAS
COUNTY OF SEDGWICK

I, P. M. LING, A PROFESSIONAL ENGINEER IN AFORESAID STATE AND COUNTY DO HEREBY CERTIFY THAT ON THIS 13th DAY OF FEBRUARY, 1904, I HAVE CAUSED TO BE SURVEYED AND PLATTED FLORENCE ADDITION TO WICHITA, SEDGWICK COUNTY, KANSAS, INTO LOTS, BLOCKS, AND STREETS THE SAME BEING A REPLAT OF THE WEST 495 FEET OF LOT 11, IN MOLAN'S GARDENS, SEDGWICK COUNTY, KANSAS, EXCEPT THAT PORTION PLATTED AS F. P. S. FIRST ADDITION, WICHITA, KANSAS, AND EXCEPT US 81 HIGHWAY RIGHT-OF-WAY (FILM 405, PAGE 108) TOGETHER WITH THE WEST 495 FEET OF LOT 12, EXCEPT US 81 HIGHWAY RIGHT-OF-WAY (FILM 405, PAGE 108) AND MORE PARTICULARLY DESCRIBED AS: BEGINNING AT A POINT IN THE WEST LINE AND 1878.90 FEET SOUTH OF THE SW CORNER OF MOLAN'S GARDENS, SEDGWICK COUNTY, KANSAS, EXCEPT US 81 HIGHWAY RIGHT-OF-WAY (FILM 405, PAGE 108) AND MORE PARTICULARLY DESCRIBED AS: BEGINNING BEARING N 0°00'10" E 29.74' 30" E ALONG SAID WEST LINE A DISTANCE OF 406.00 FEET; THENCE BEARING S 89°55'44" W 525' 0" E ALONG THE SOUTH LINE OF F. P. S. FIRST ADDITION WICHITA, KAN., S. A DISTANCE OF 525 FEET; THENCE BEARING S 0°00'00" E A DISTANCE OF 403.87 FEET; THENCE BEARING S 89°55'44" W A DISTANCE OF 525 FEET TO THE POINT OF BEGINNING, EXCEPT THE WEST 30 FEET FOR ROAD PURPOSES AND EXCEPT US 81 HIGHWAY RIGHT-OF-WAY (FILM 405, PAGE 108).

THIS PLAT HAS BEEN SUBMITTED TO AND APPROVED BY THE WICHITA-SEDGWICK COUNTY METROPOLITAN AREA PLANNING COMMISSION, WICHITA, KANSAS, DATED THIS 13th DAY OF FEBRUARY, 1904.

James C. Wilson
JAMES C. WILSON CHAIRMAN
Robert A. Lakin
ROBERT A. LAKIN SECRETARY

THIS PLAT APPROVED AND ALL DEDICATIONS SHOWN HEREON ARE ACCEPTED BY THE CITY COMMISSION OF THE CITY OF WICHITA, KANSAS, DATED THIS 13th DAY OF FEBRUARY, 1904.

Robert C. Entick
ROBERT C. ENTICK MAYOR
Donald C. Gistick
DONALD C. GISTICK CITY CLERK

As the Wichita State Bank in Wichita, Kansas, mortgage holder on the above described tract, do hereby consent to the platting of FLORENCE ADDITION to Wichita, Sedgwick County, Kansas.

State of Kansas } ss.
County of Sedgwick } ss.
Be it remembered that on this 13th day of February, 1904, before me, a Notary Public in and for said State of Kansas, at Wichita, Kansas, the personally known to be the same person who executed the foregoing instrument of writing, duly acknowledged the execution of same, for and on behalf of the voluntary act, deed of said bank, in testimony whereof I have hereunto set my hand & affixed my Notary Seal the day & year above written.

My Commission expires _____ Notary Public
STATE OF KANSAS

THIS IS TO CERTIFY THAT THIS INSTRUMENT WAS FILED FOR RECORD IN THE REGISTER OF DEEDS OFFICE AT WICHITA, KANSAS, ON THIS 13th DAY OF FEBRUARY, 1904.

Notary Seal
NOTARY PUBLIC
1904

Entered on Transfer Record this 13 day of February, 1904.
Don Knight
DON KNIGHT County Clerk

KNOW ALL MEN BY THESE PRESENTS THAT WE, OWNERS OF THE LAND AS ABOVE SET FORTH IN THE ENGINEER'S CERTIFICATE, HAVE CAUSED THE LAND TO BE SURVEYED AND PLATTED INTO LOTS, BLOCKS, AND STREETS, KNOWN AS FLORENCE ADDITION, TO WICHITA, SEDGWICK COUNTY, KANSAS, EASEMENTS AS INDICATED, FOR THE CONSTRUCTION AND MAINTENANCE OF PUBLIC UTILITIES, ARE HEREBY GRANTED FOR THE STREETS AND DEDICATED TO AND ON THE USE OF THE PUBLIC. ALL ABUTTERS' RIGHTS OF ACCESS AND FROM BROADWAY OVER AND ACROSS THE WEST LINES OF BLOCKS 1 AND 2 ARE HEREBY GRANTED TO THE CITY OF WICHITA, PROVIDED HOWEVER THAT LOT 1, BLOCK 1 SHALL HAVE ACCESS TO BROADWAY AT ONE (1) LOCATION, AND LOT 2, BLOCK 2 SHALL HAVE ACCESS TO BROADWAY AT TWO (2) LOCATIONS, SAID LOCATIONS TO BE DETERMINED BY THE CITY ENGINEER OF WICHITA, KANSAS. THE TEMPORARY CURB OR S&C WILL EXPIRE AT SUCH FUTURE TIME AS SAID STREET IS EXTENDED FURTHER EAST. PORTIONS OF MOLAN'S GARDENS WITHIN THE ENGINEER'S CERTIFICATE ARE HEREBY VACATED AND RE-PLATTED BY VIRTUE OF ESA 12-512(B) AMENDED.

GAMER: TRIPLE J PROPERTIES, LTD., A GENERAL PARTNERSHIP, BY ALL PARTNERS.

JAMES O. SMITH JOEL N. POLLACK JERROLD A. FELDMAN

STATE OF KANSAS
COUNTY OF SEDGWICK

BE IT REMEMBERED THAT ON THIS 13th DAY OF FEBRUARY, 1904, BEFORE ME A NOTARY PUBLIC IN AFORESAID STATE AND COUNTY, WERE JAMES O. SMITH, PARTNER; JOEL N. POLLACK, PARTNER; AND JERROLD A. FELDMAN, PARTNER, ALL OF THE PARTNERS OF TRIPLE J PROPERTIES, LTD., A GENERAL PARTNERSHIP, WHO PERSONALLY KNOWN TO BE THE SAME PERSONS WHO EXECUTED THE FOREGOING INSTRUMENT OF WRITING AND DULY ACKNOWLEDGED THE EXECUTION OF SAME FOR AND ON BEHALF AND AS THE ACT AND DEED OF SAID PARTNERSHIP, IN TESTIMONY WHEREOF I HAVE HEREUNTO SET MY HAND AND AFFIXED BY NOTARIAL SEAL THE DAY AND YEAR ABOVE WRITTEN.

NOTARY PUBLIC

MY APPOINTMENT EXPIRES _____

