





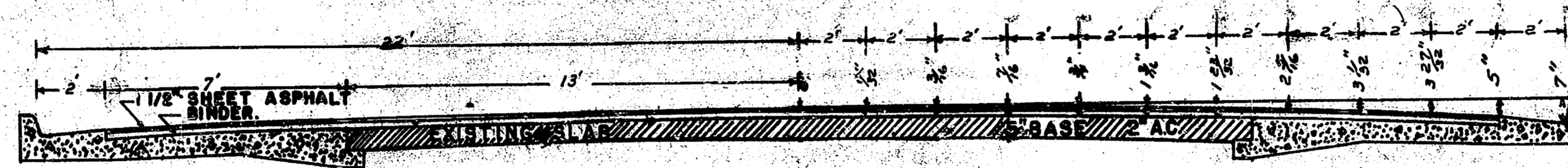




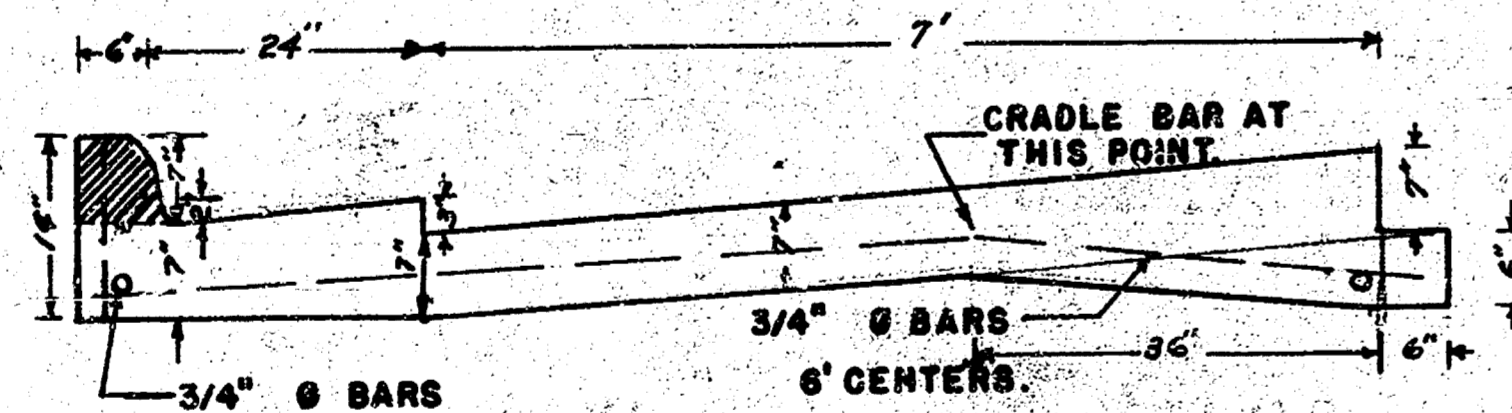


1948

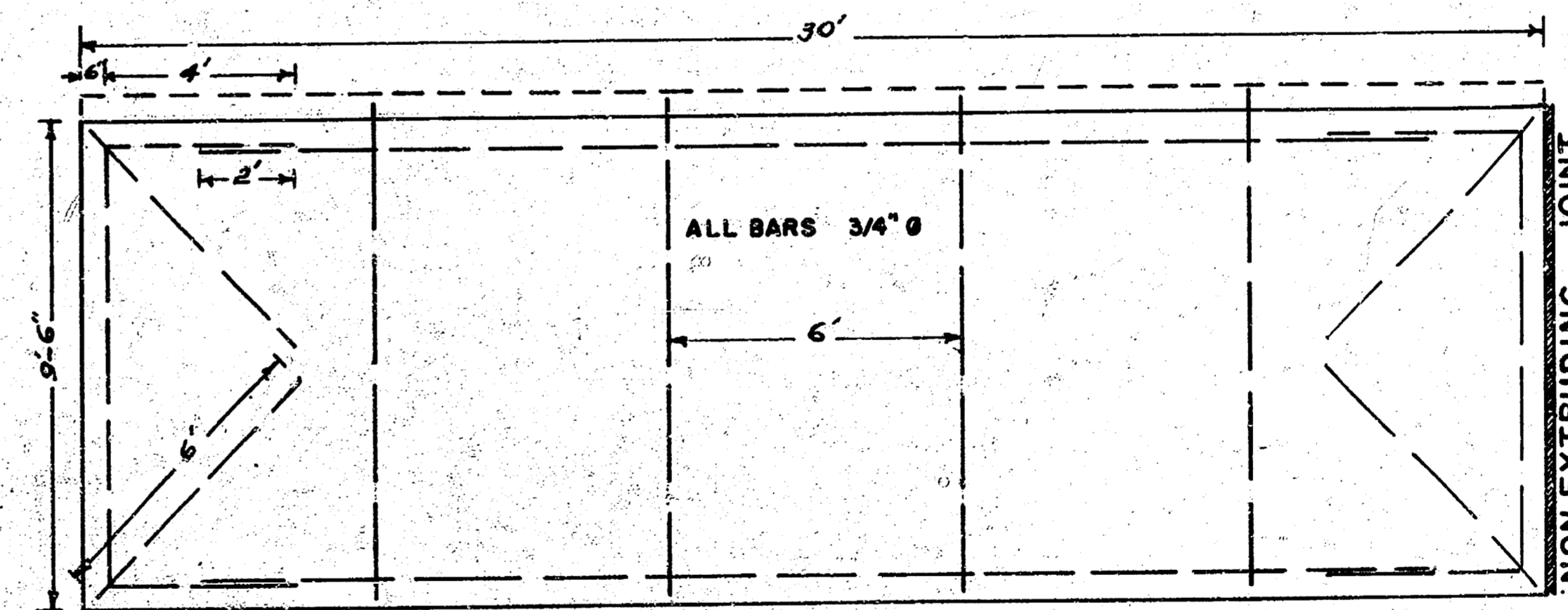
GEORGE WASHINGTON — BOULEVARD  
E. L. INTERSECTION ORME & KANSAS — W. L. MADISON.



PROPOSED CROSS SECTION.  
SCALE 3/8\"

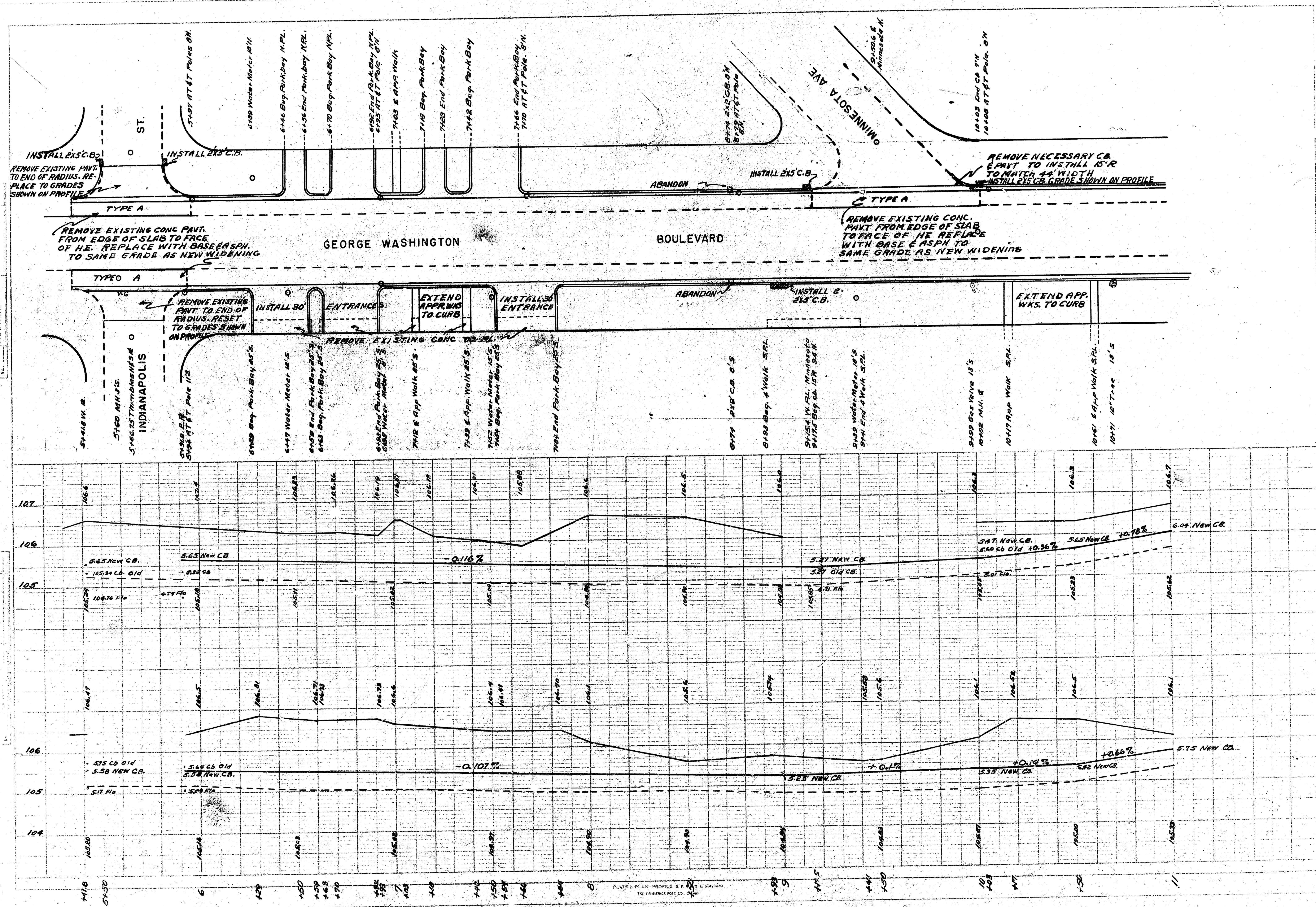


WIDENING  
DETAILED  
SCALE 3/4\"



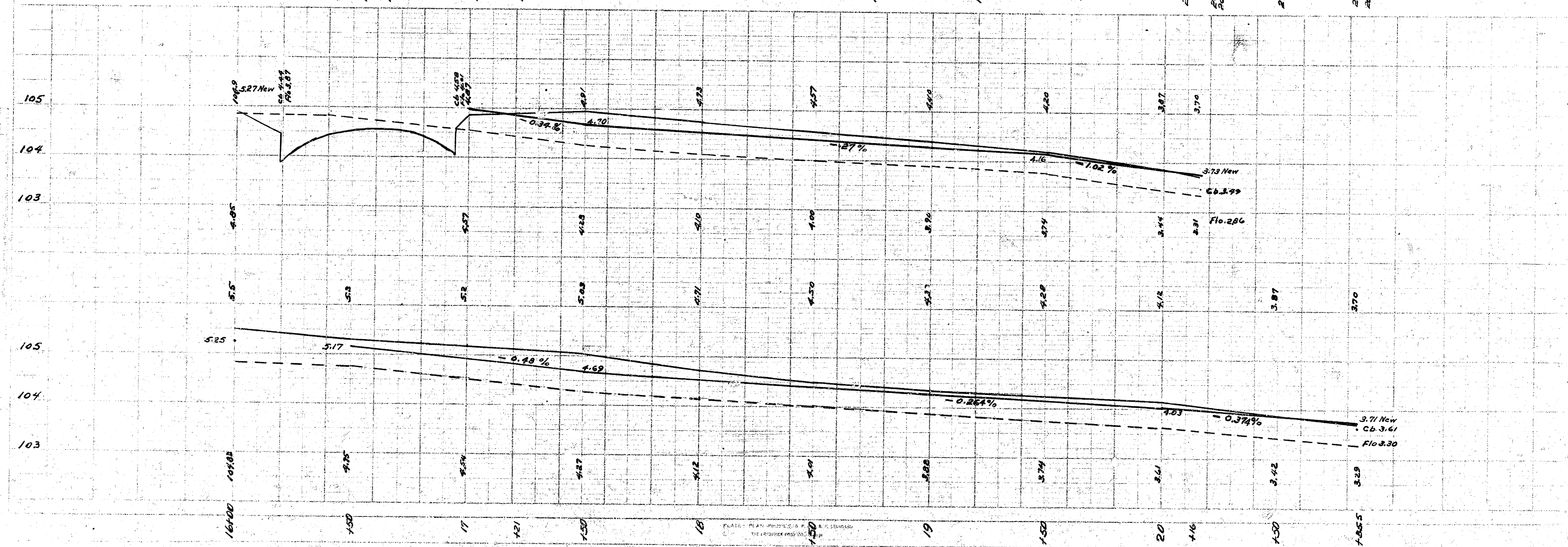
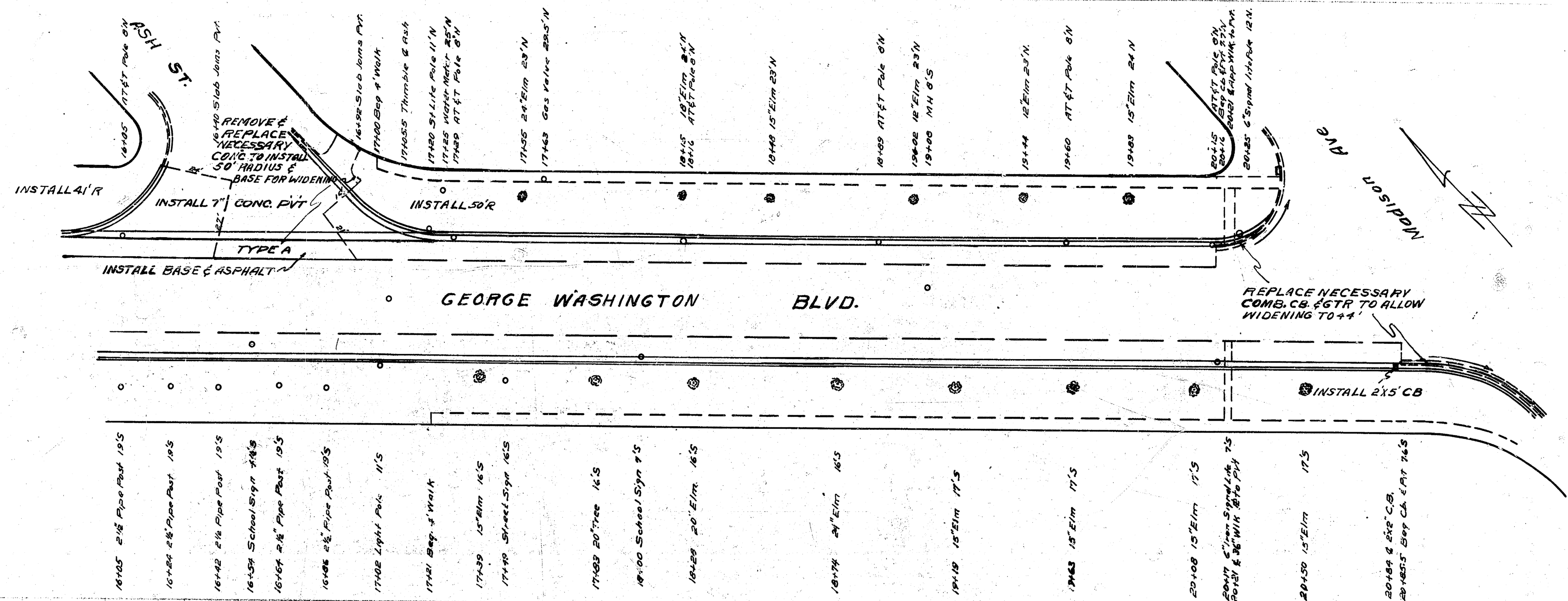
REINFORCING STEEL DETAIL.  
SCALE 3/8\"

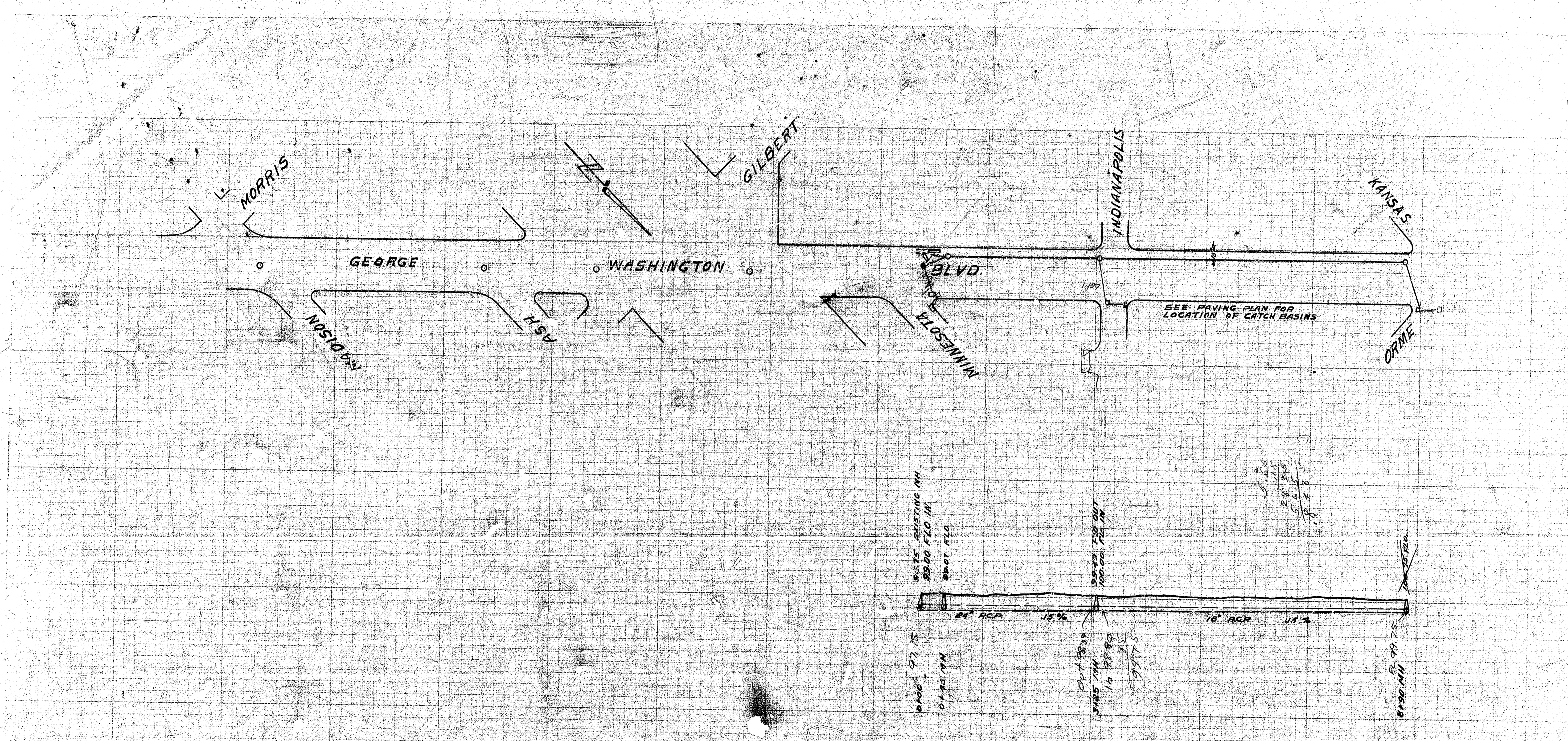




DATE: 10/15/10  
 DRAWN BY: [Name]  
 CHECKED BY: [Name]  
 PROJECT: [Name]







INCIDENTAL DRAINAGE IN CONNECTION WITH PAVING  
 GEORGE WASHINGTON BLVD. ORME & KANSAS - MADISON

B.M. El. 106.26  
 "L" in John M. Cook  
 So. Side Indianapolis  
 48'E. of E.L. See Washington