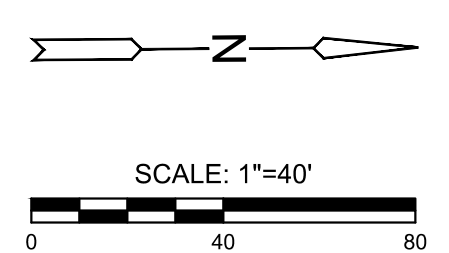
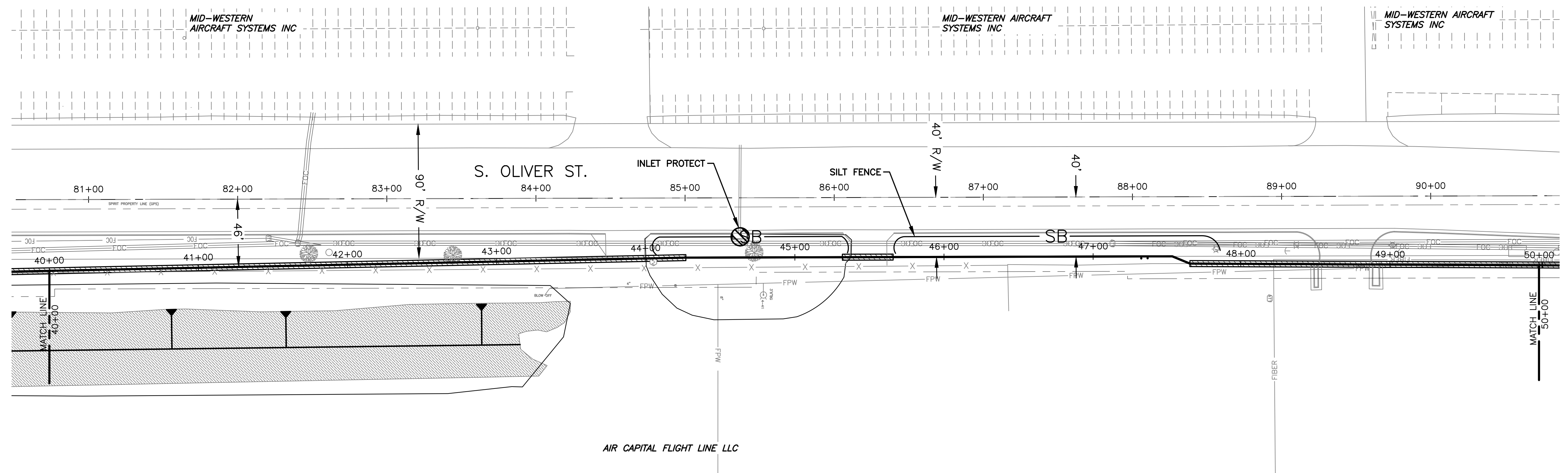
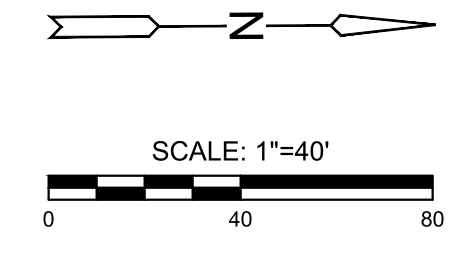
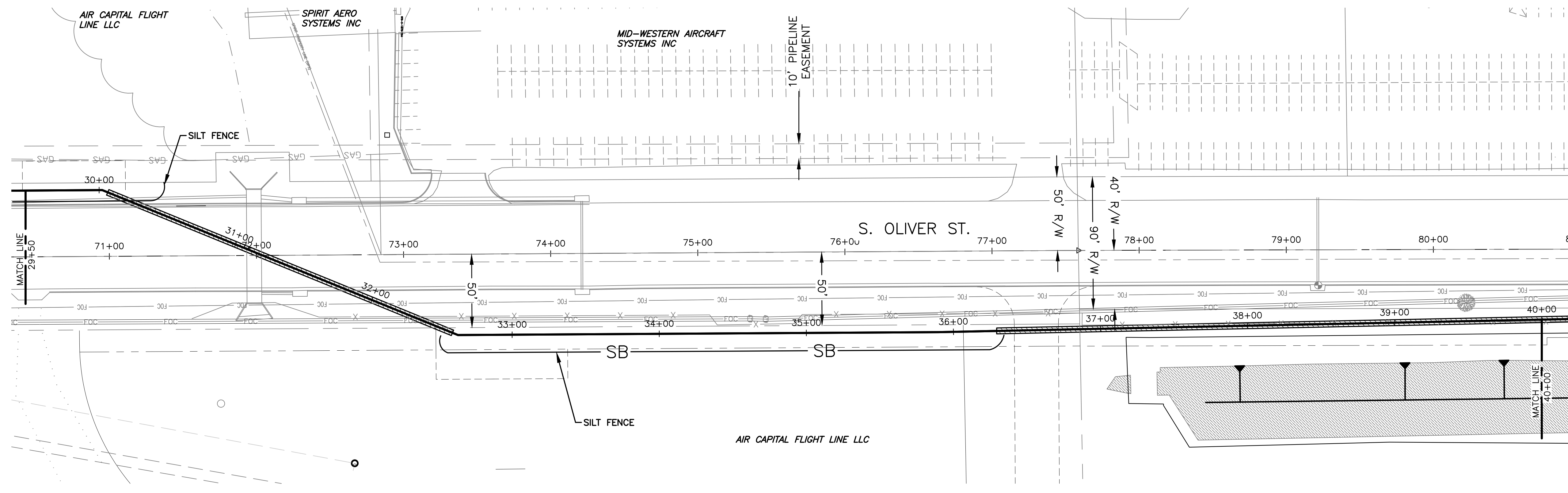


J:\PROJECTS\2021\101010887\_ACFL\_SPIRIT\_MILITARY\00\_210857\_CAD\SHETS\06\_EROSION\_CONTROL.DWG  
 PLOTTED: Monday, June 16, 2025 @ 02:14PM  
 ©2025 IMEC ENGINEERING, INC. ALL RIGHTS RESERVED WWW.IMEC.COM. THESE DRAWINGS AND THEIR CONTENTS, INCLUDING, BUT NOT LIMITED TO, ALL CONCEPTS, DESIGNS, & DETAILS ARE THE EXCLUSIVE PROPERTY OF IMEC ENGINEERING, INC. (IMEC), AND MAY NOT BE USED OR REPRODUCED IN ANY WAY WITHOUT THE EXPRESS CONSENT OF IMEC.



**LEGEND**

- PROP. WATER LINE
- CW — CHILLED WATER
- IW — INDUSTRIAL WATER
- IRRG — IRRIGATION
- SS — SANITARY SEWER
- SWS — STORM SEWER
- TELCO — TELCO
- 12KV — 12 KV
- G — GAS
- 480 V — 480 V
- FOC — FIBER OPTIC CABLE
- FPW — FIRE PROTECTION WATER
- X — FENCE
- SB — SILT BARRIER
- ⊗ — INLET PROTECT

**NOTE:**  
 SILT BARRIER MAY BE SILT FENCE OR STRAW WATTLE WHERE NECESSARY



WATER EXTENSION PLANS FOR  
**ACFL WATER EXTENSION**  
 WICHITA, KS

**EROSION CONTROL SHEET 2**

PROJECT NO.	210857	
SCALE	1"=40'	
DRAWN	DESIGNED	CHECKED
KM	KM	DK
NO.	REVISION	DATE
01	ISSUED FOR CONSTRUCTION	06/13/25
SHEET NO. 14 OF 20		