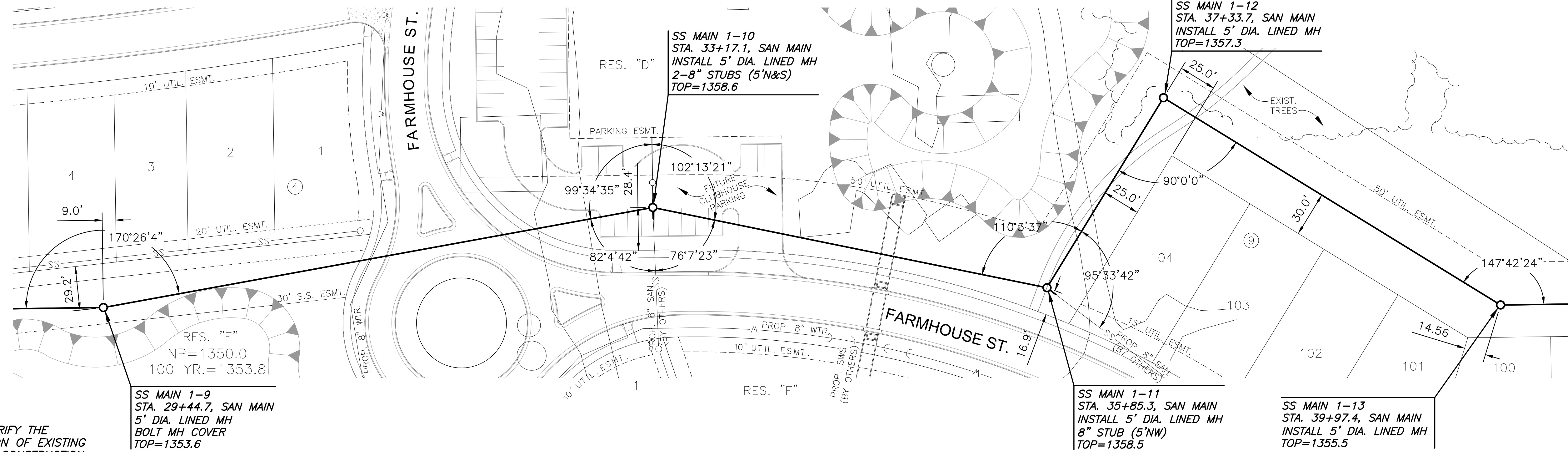


PROJECTED: Tuesday, August 19, 2025 @ 10:11AM



**NOTE:**  
CONTRACTOR TO VERIFY THE DEPTH AND LOCATION OF EXISTING UTILITIES PRIOR TO CONSTRUCTION.

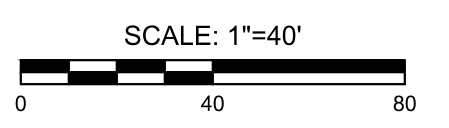
SS MAIN 1-9  
STA. 29+44.7, SAN MAIN  
5' DIA. LINED MH  
BOLT MH COVER  
TOP=1353.6

SS MAIN 1-10  
STA. 33+17.1, SAN MAIN  
INSTALL 5' DIA. LINED MH  
2-8" STUBS (5'N&S)  
TOP=1358.6

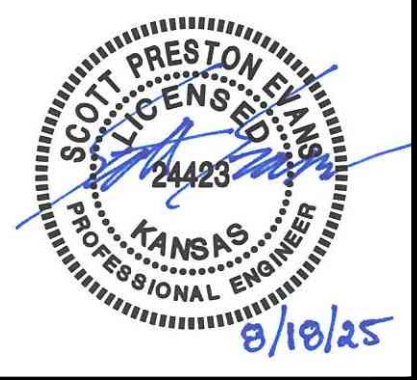
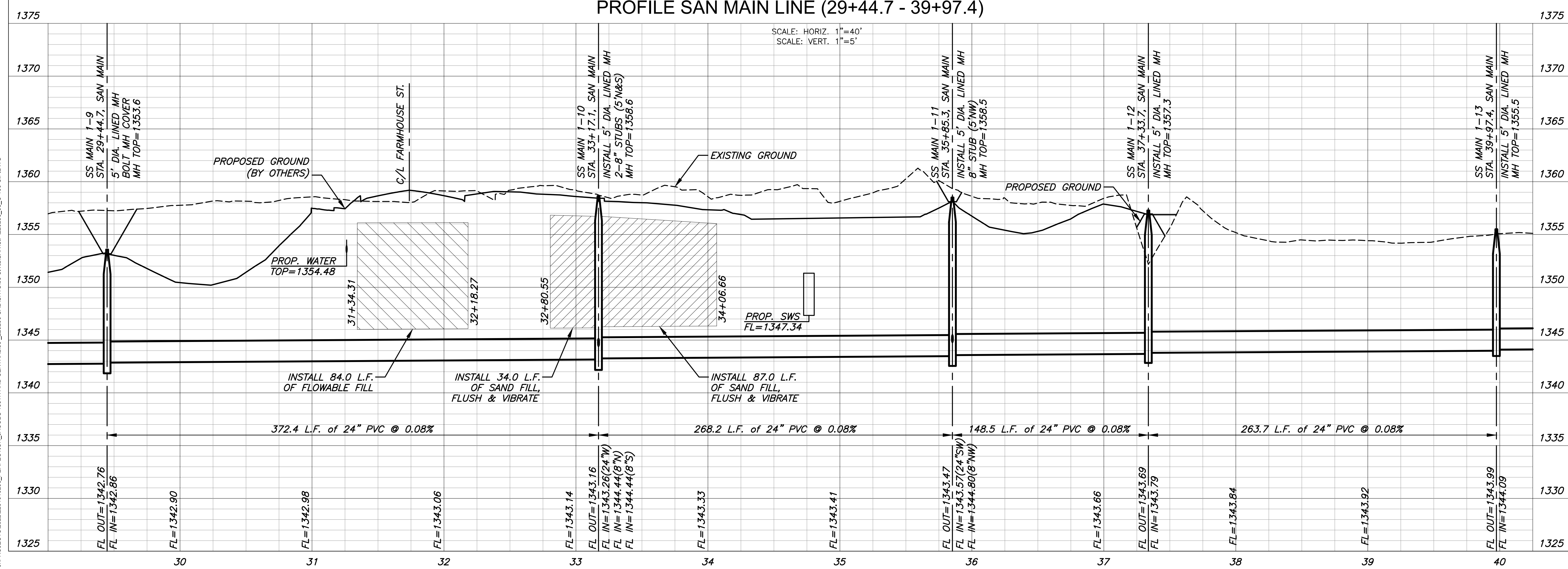
SS MAIN 1-11  
STA. 35+85.3, SAN MAIN  
INSTALL 5' DIA. LINED MH  
8" STUB (5'NW)  
TOP=1358.5

SS MAIN 1-12  
STA. 37+33.7, SAN MAIN  
INSTALL 5' DIA. LINED MH  
TOP=1357.3

SS MAIN 1-13  
STA. 39+97.4, SAN MAIN  
INSTALL 5' DIA. LINED MH  
TOP=1355.5



PLAN SAN MAIN LINE (29+44.7 - 39+97.4)  
PROFILE SAN MAIN LINE (29+44.7 - 39+97.4)



SANITARY SEWER MAIN  
**COURTYARDS AT JACOB'S FARM 2ND ADDITION**  
WICHITA, KANSAS

SAN LINE MAIN 29+44.7 - 39+97.4	
PROJECT NO.	468-2025-017794
SCALE	1" = 40'
DRAWN	DESIGNED
JWC	DFL
CHECKED	SPE
NO.	REVISION
0	ISSUED FOR CONSTRUCTION
08/18/2025	DATE
SHEET NO. C-106-CIP 06 OF 22	

J:\PROJECTS\2025\20250110\2025\_PERFECTION\_JACOBS\_COURTYARDS AND CENTRAL\00\_202508\_CAD\SHIFTS\05\_CIVIL\SAN\CIP\202508\_05\_C-106-CIP.DWG