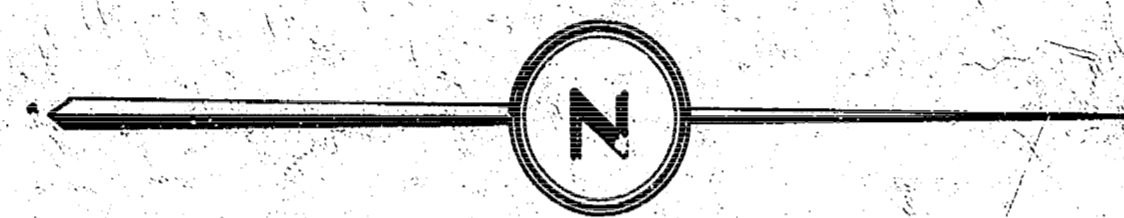
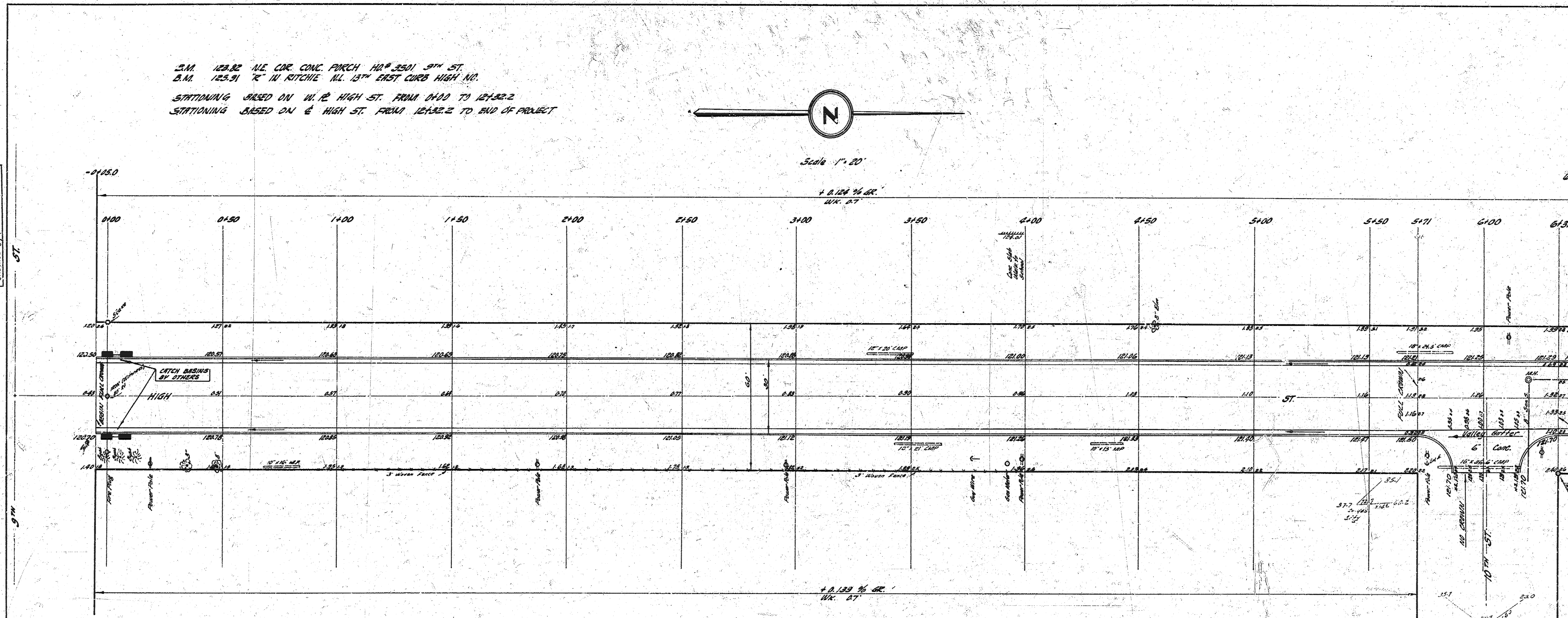


I.M. 123.32 1/2" DIA. CONC. PARCH. HD. 3501 3RD ST.
 B.M. 125.91 7" IN. RITCHIE. N.L. 13TH EAST CURB HIGH W.D.
 STATIONING BASED ON W. 1/2 HIGH ST. FROM 0+40 TO 0+42.2
 STATIONING BASED ON E. HIGH ST. FROM 12+32.2 TO END OF PROJECT



Scale 1" = 20'

Survey done under BK 1745
 Plan and notes
 Etc. as of date
 Considered



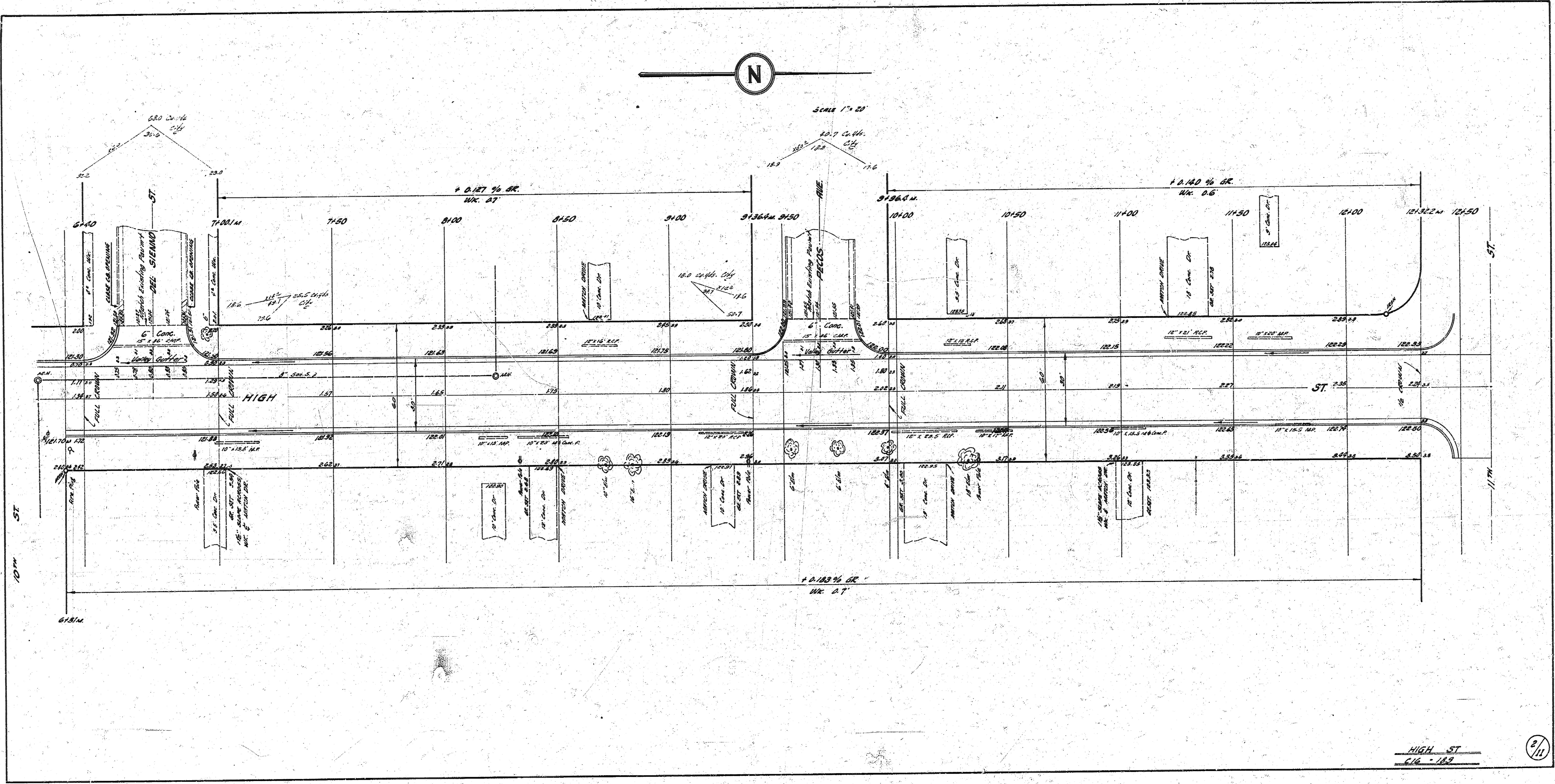
NOTE TO CONTRACTOR'S
 Reference pipes to be disposed
 in accordance to City Dept
 checker's instructions.



REVISION
 1. 11.10.10 11.10.10
 2. 11.10.10 11.10.10
 3. 11.10.10 11.10.10

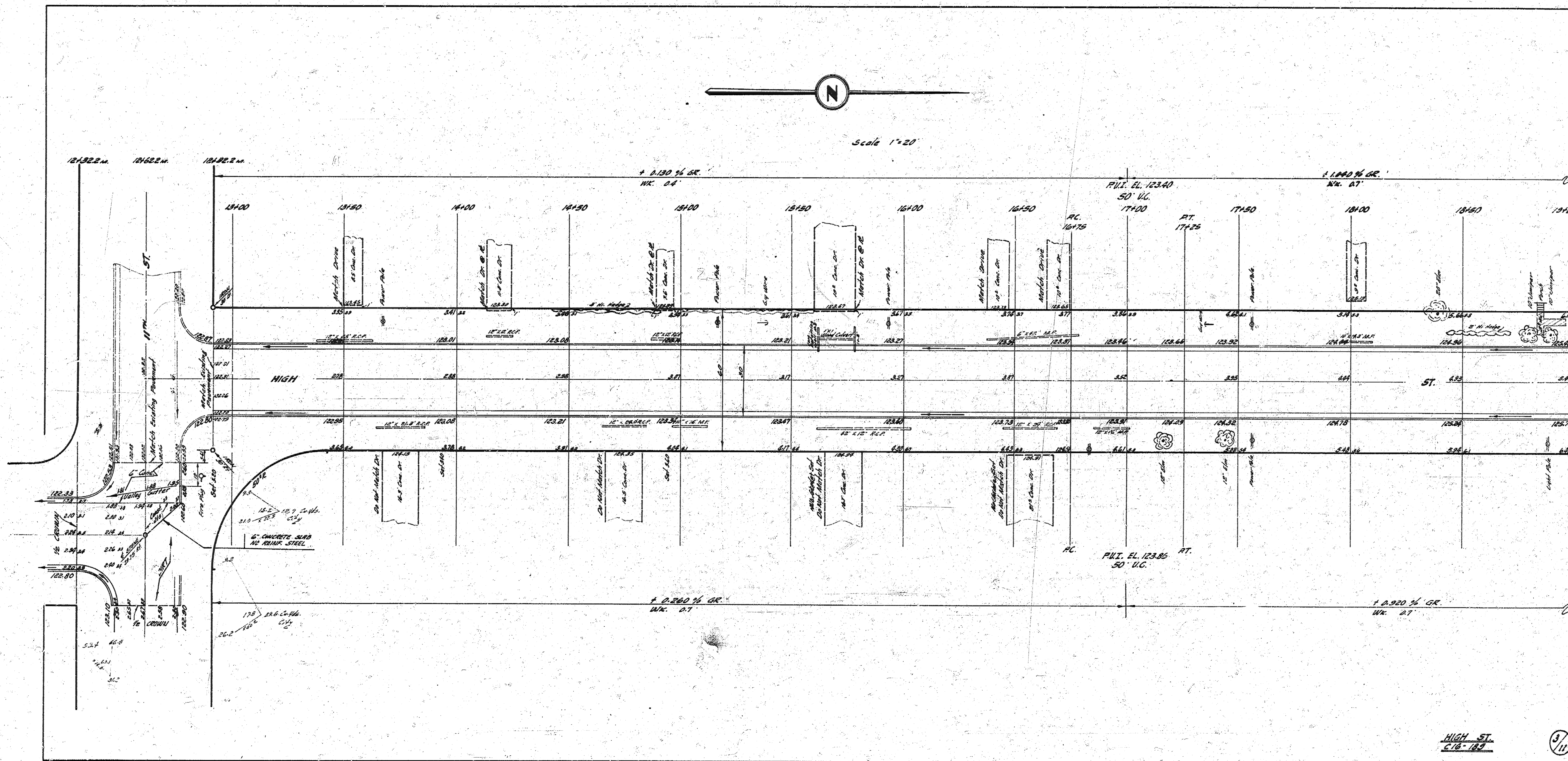
HIGH ST.
 AL. 3RD ST. TO S.L. 13TH ST.
 26° - 2' - 30" AC.
 CITY OF WICHITA, KANSAS
 B. E. SMITH CITY ENGINEER
 DATE MAY 1960 PROJ. NO. C10-189







Scale 1"=20'



HIGH ST
C16-183



