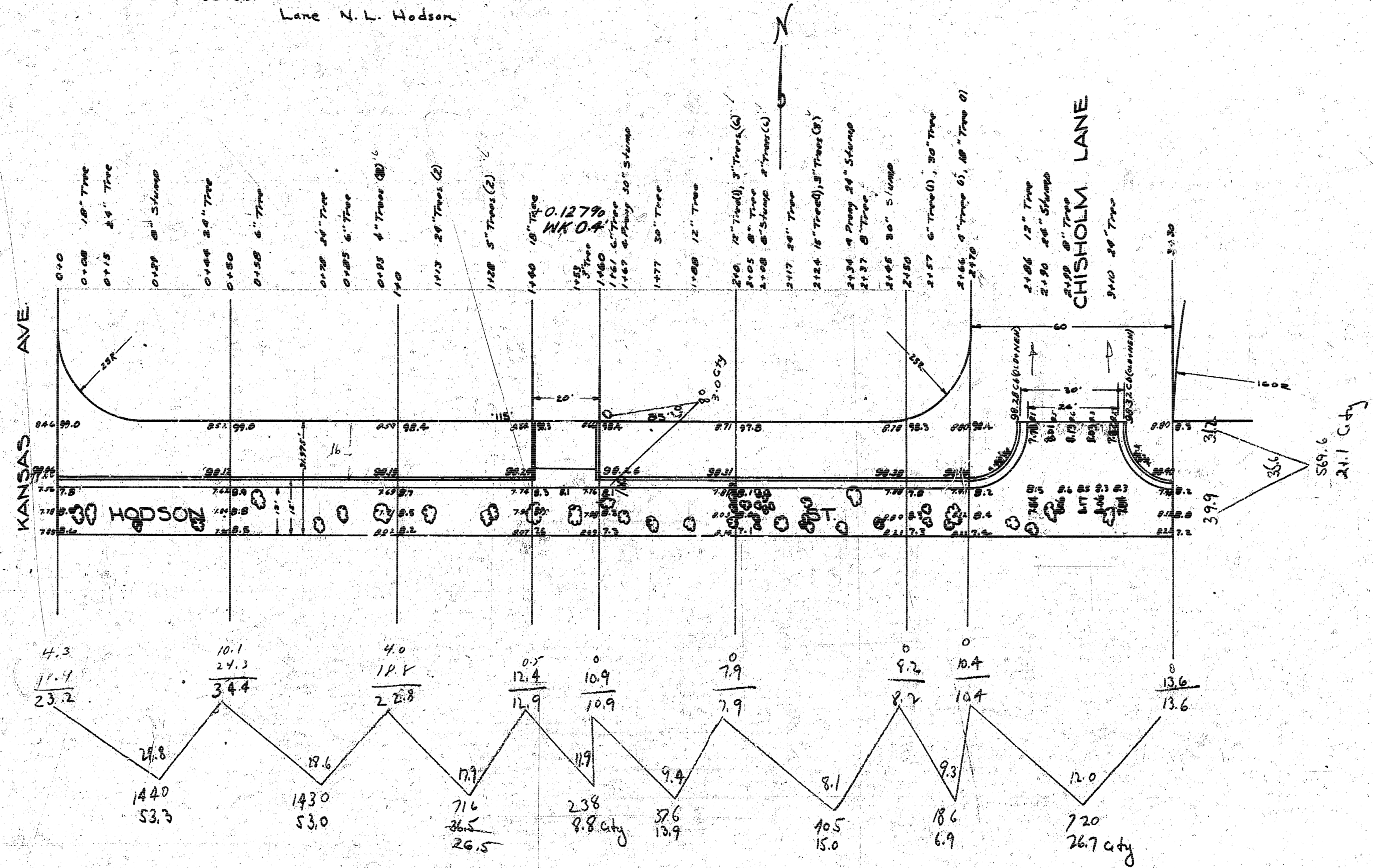


B.M. 98.32. 2" in Globe S. end of N.E. of Chisholm Lane N.L. Hodson



Prop.	City
53.5	8.8
53.0	26.7
36.5	3.0
13.9	21.1
15.0	59.6
6.9	71.0%
178.6	
+10%	
196.5	196.5 cu yds.

HODSON ST. N 1/2
 EL KANSAS TO EL CHISHOLM LANE
 13-2-15 ASPHALTIC CONCRETE
 CITY OF WICHITA, KANS.
 LK WHITE - CITY ENGINEER
 JAN 1947