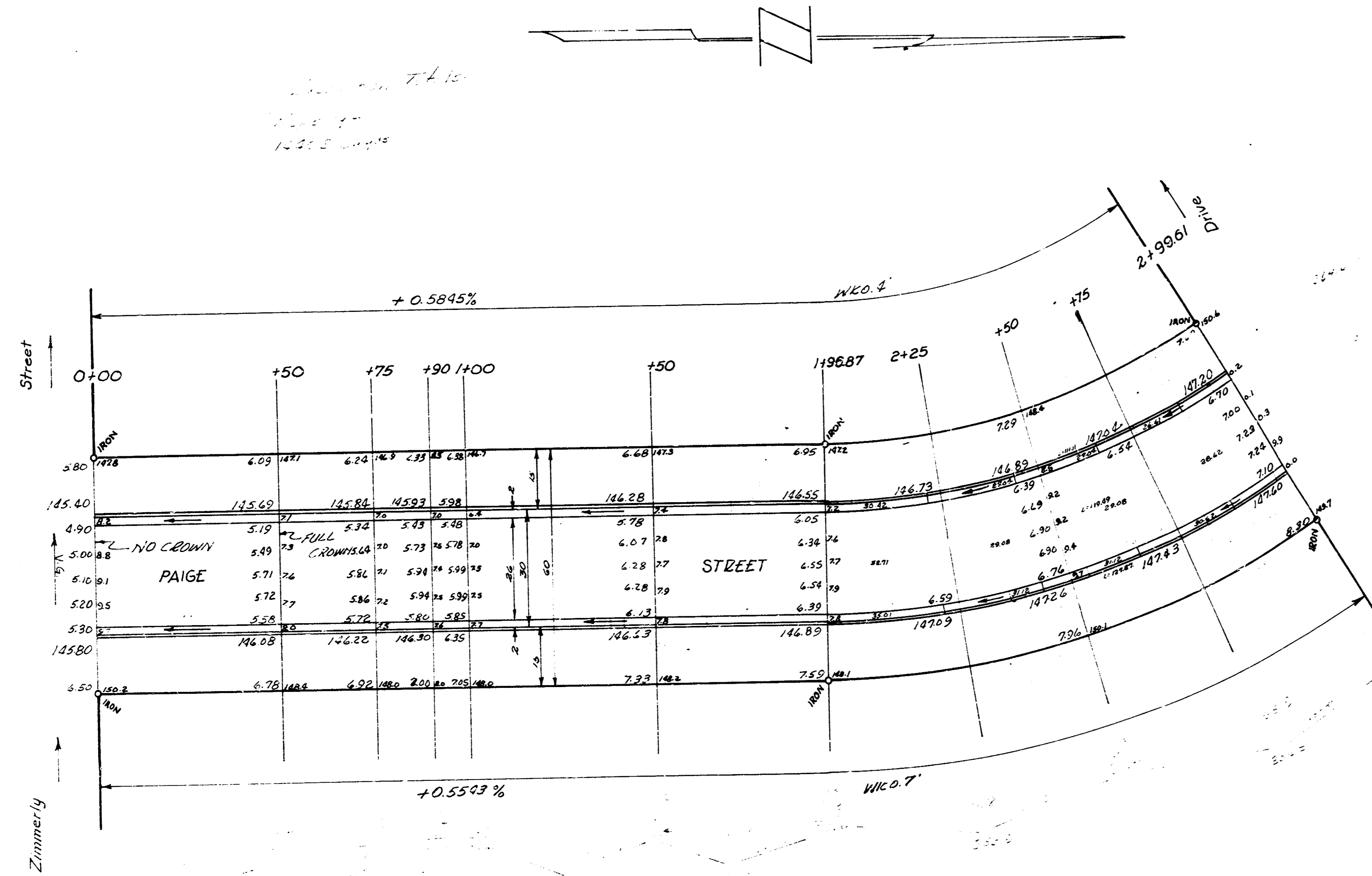


B.M. 139.81 "a" in top NE corner E headwall triple RCBC on Rock Road - 400' So. of Turnpike
 Stationing on



Curve Data - Sta 1+96.87 to Sta 2+99.61 on 3' offset East Curb.
 R = 236.99 Δ = 52° Defl = 72529 min/100 arc Stationing on W.E.

STATION	Arc Length West Side	Arc Length East Side	Deflection Angle	Chord Length	Chord Length West Side	Chord Length East Side
1+96.87						
2+25	28.13	36.23	4° 22' 21"	37.82	36.19	39.17
+50	25.0	38.20	3° 53' 38"	38.16	38.18	25.93
+75	25.0	38.20	3° 53' 38"	38.16	38.18	25.93
2+99.61	24.61	31.70	3° 49' 58"	35.58	31.48	25.53

NOTE TO CONTRACTOR
 This project will be constructed under
 the supervision of the CITY ENGINEER
 and subject to the approval of the
 City Engineer. The City Engineer
 of the City of Wichita, Kansas, is
 the authority for all matters relating
 to the construction of this project.
 B. E. SMITH
 CITY ENGINEER

PAIGE STREET
 NL Zimmerly to SL Levitt
 26-2-30 A.C.
 CITY OF WICHITA, KANSAS
 B. E. SMITH CITY ENGINEER
 1937 PRIVATE JOB