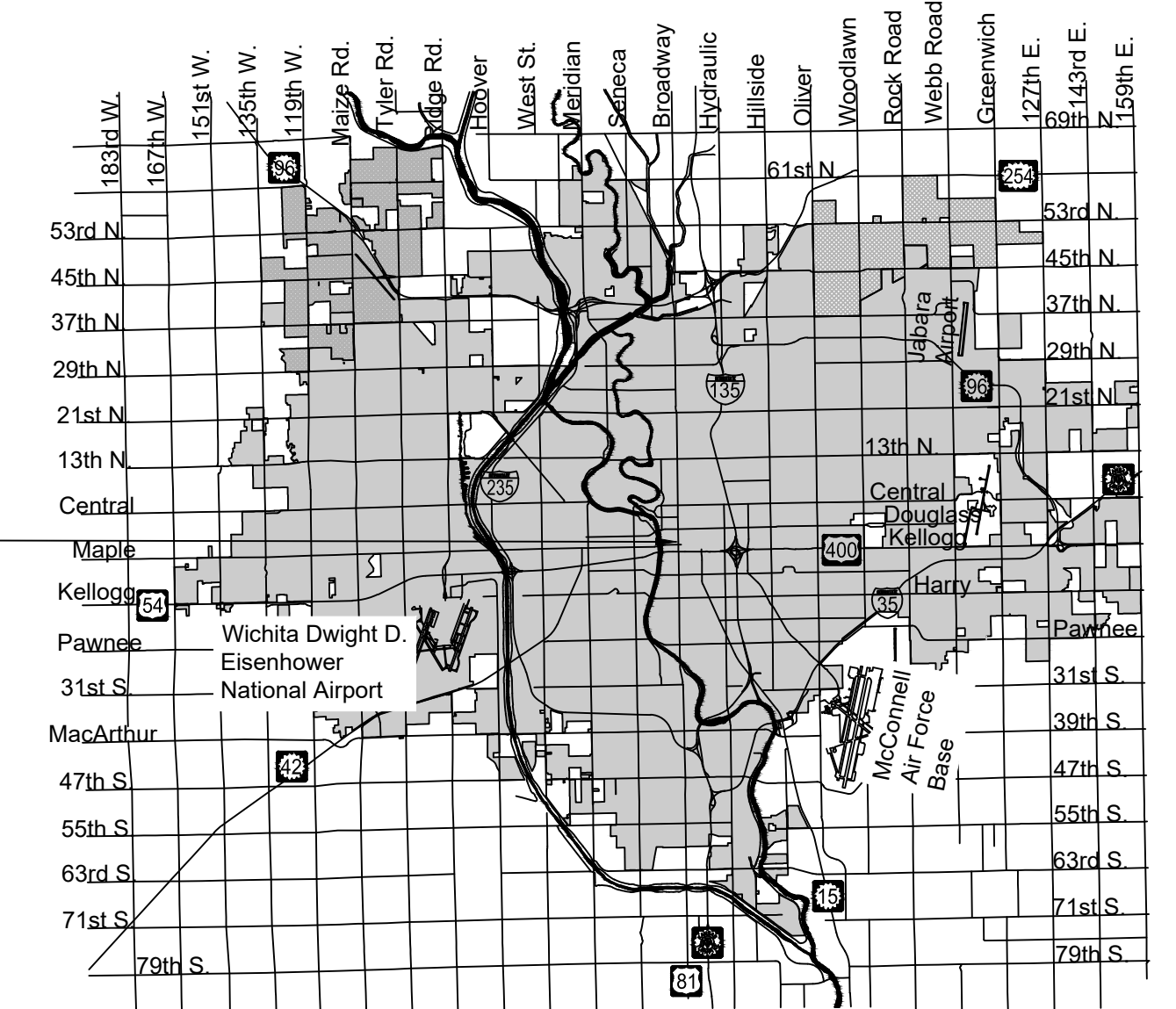


OLD TOWN SLOTTED TRENCH DRAINS

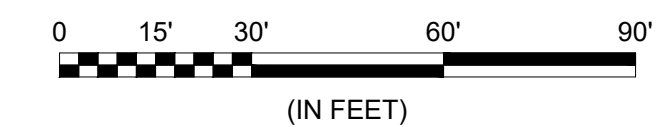
CITY OF WICHITA, KANSAS

Paul Gunzelman, P.E. City Engineer
 Project Number: 458-2024-085577
 Org Code Number: _____
 Munis Number: _____

PROJECT
LOCATION



Vicinity Map



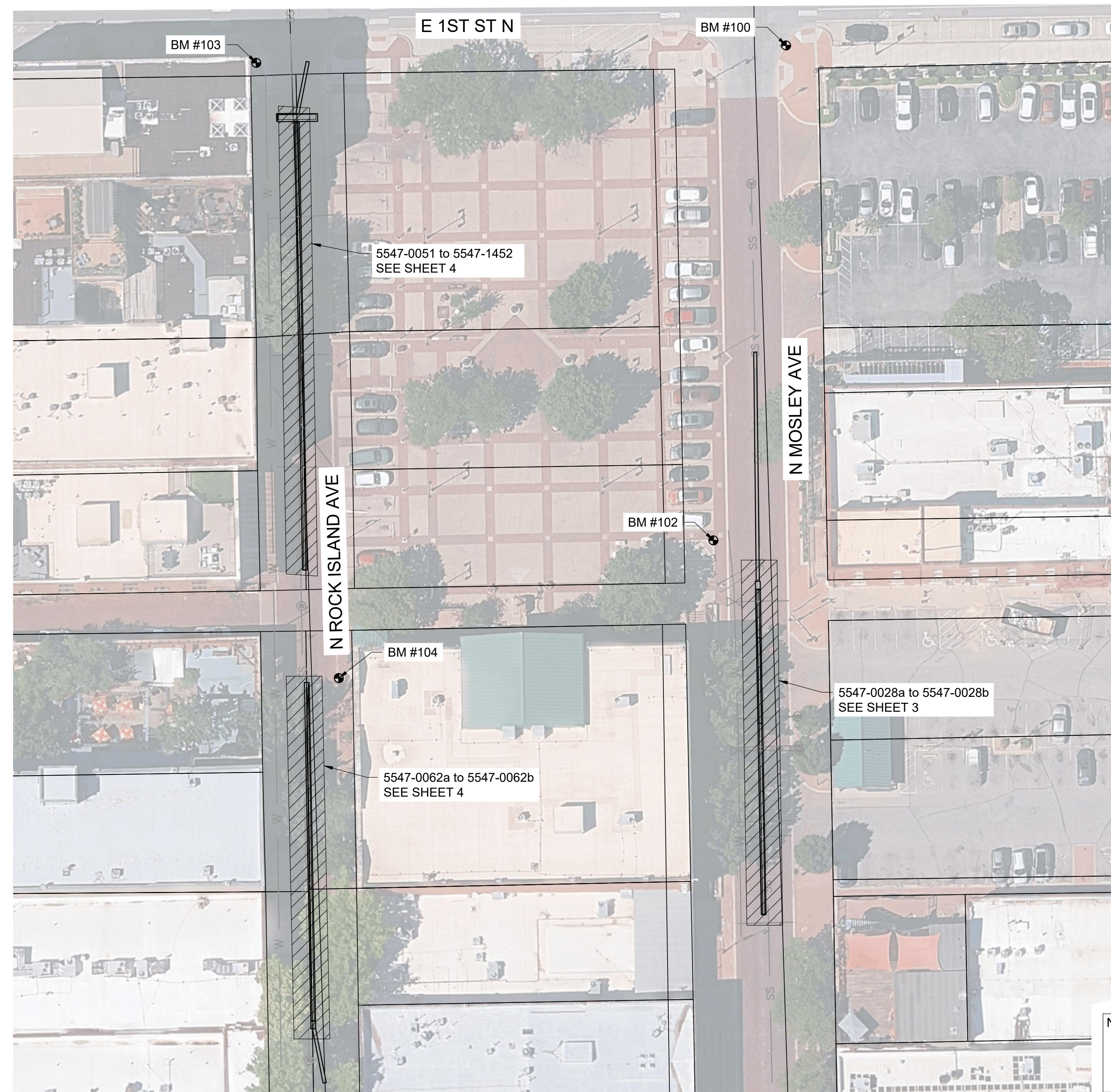
JULY 2025

PLANS PREPARED BY



GARVER
 1995 Midfield Road
 Wichita, KS 67209
 (316) 264-8008
 www.GarverUSA.com
 Project No. T41-2500697

Sheet Number	Sheet Title
1	COVERSHEET
2	GENERAL NOTES
3	MOSLEY TRENCH DRAIN
4	ROCK ISLAND TRENCH DRAINS
5	R-4999-CX BOLTED DETAIL
6	TRAFFIC CONTROL



CONTROL POINTS - BENCHMARKS

POINT #100: PLUS CUT IN A SQUARE CUT ON THE TOP OF AN INLET AT THE SOUTHWEST CORNER OF 1ST STREET NORTH AND MOSLEY AVENUE, ELEVATION = 1297.08 (NAVD88, G18) MODIFIED GROUND COORDINATES N 1686415.80 E 1651700.16

POINT #101: PLUS CUT ON SOUTHWEST CORNER OF AN INLET AT THE SOUTHWEST CORNER OF 1ST STREET NORTH AND WASHINGTON AVENUE, ELEVATION = 1296.88 (NAVD88, G18) MODIFIED GROUND COORDINATES N 1686426.05 E 1651980.07

POINT #102: PLUS CUT ON NORTHEAST CORNER OF HANDICAP STALL ON MOSLEY AVENUE, NORTHEAST OF THE NORTHEAST CORNER OF 835 E. 1ST STREET NORTH, WICHITA, KS 67202, ELEVATION = 1297.02 (NAVD88, G18) MODIFIED GROUND COORDINATES N 1686208.18 E 1651669.66

POINT #103: PLUS CUT AT SOUTHWEST CORNER OF ROCK ISLAND AVENUE AND 1ST STREET NORTH ON NORTH SIDE OF HANDICAP RAMP, ELEVATION = 1296.92 (NAVD88, G18) MODIFIED GROUND COORDINATES N 1686408.52 E 1651477.82

POINT #104: PLUS CUT IN CONCRETE SIDEWALK BETWEEN BRICK SECTIONS AT NORTHWEST CORNER OF 835 E. 1ST STREET NORTH, WICHITA, KS 67202, ELEVATION = 1296.74 (NAVD88, G18) MODIFIED GROUND COORDINATES N 1686150.39 E 1651512.46

NOTE: All coordinates listed are modified NAD83 Kansas State Plane Zone South unless otherwise noted. To convert listed coordinates to NAD83 Kansas State Plane Zone South coordinates multiply the northing and easting by the project scale factor of 0.99994391. Elevation datum is NAVD88 Geoid 12B unless otherwise noted.

GENERAL NOTES:

- The Contractor shall comply with all applicable safety regulations. All construction shall be completed following current City Standard Specifications and Special Provisions.
- Contractor will be required to provide notice to utility companies a minimum of seventy-two (72) hours prior to any excavation, as follows:

Kansas One-Call 687-2470

The Contractor must notify the following in case of an emergency:

AT&T	1-800-246-8464
Black Hills Energy	1-800-694-8989
City of Wichita Water & Sewer Dept.	1-316-219-8921
City of Wichita Stormwater	1-316-268-4090
City of Wichita Traffic	1-316-268-4034
Cox Communications	1-888-249-3530
Kansas Gas Service	1-888-482-4950
Westar Energy	1-800-544-4857
Southern Star Pipeline	1-888-816-3558

- Utility service lines, poles, etc. are to be adjusted as necessary by others prior to construction unless the plans specifically call for their adjustment by the Contractor or unless the plans specifically identify a utility to be adjusted by its owner during construction. Existing utilities and their location, as shown on the plans, represent the best information obtainable for design. The Contractor will be required to work around existing utilities within the Right-of-Way which do not conflict with proposed construction.
- Rubble from the removal of miscellaneous structures and excess excavation which is to be wasted shall be disposed of on sites to be provided by the Contractor. These sites shall be approved by the Engineer as to suitability, appearance and site location. Locations, in the opinion of the Engineer, that will leave an unsightly appearance will not be approved. All disposal sites must be approved by the Kansas Department of Health and Environment. Material either stockpiled or disposed of in a flood plain would require a Kansas State Board of Agriculture permit. Any material dumped in waters of the United States or wetlands is subject to U.S. Corps. of Engineers permitting regulations. Any material buried or stockpiled beyond approved construction limits would require additional archaeological investigations unless buried in a previously approved borrow location.
- Trees and shrubs in public Right-of-Way which are in direct conflict with proposed new construction shall be removed by the Contractor with the Engineer's approval. Trees and shrubs which are not in direct conflict with proposed new construction shall be saved and protected from damage.
- The Contractor shall give all property owners and/or tenants of developed property abutting the construction of this project a minimum of ten (10) days notice prior to start of construction.
- The Contractor shall be responsible for preserving property irons. The Contractor will be required to re-establish any property irons which are damaged or destroyed by his construction operations. Such irons shall be re-established by a licensed land surveyor in accordance with state laws.
- The Water Distribution Division shall field locate water valves one time during construction when requested by the Contractor. It shall be the Contractor's responsibility to preserve such field locations during the construction process. Water valves, valve boxes or fire hydrants damaged during construction shall be repaired by the Contractor at his own expense. Valve boxes and water meters within the project limits shall be adjusted to match field grades.
- If traffic is impacted by construction, a traffic control plan must be submitted and approved by the City Traffic Engineer, at traffic@wichita.gov before construction can begin. The Contractor shall be responsible for all traffic control measures to facilitate construction. All construction zone markings and signage shall conform to the latest version of the Manual on Uniform Traffic Control Devices (MUTCD) as published by the US Dept. of Transportation, Federal Highway Administration. All costs associated with construction markings and signage shall be the Contractors responsibility.
- All elevations shown are NAVD 88.
- All existing pavement and curb and gutter within the construction limits shall be saw cut, full depth, to the lines shown on the plans, or to the nearest joint, and removed, unless otherwise noted. If removal limits are within three feet of a joint, remove to the joint.
- All traffic control devices in the work zone (including markings and signs) and their installation and maintenance shall comply with the latest edition of the Manual on Uniform Traffic Control Devices (MUTCD). All traffic control devices in the traveled way or clear zone shall be crashworthy (NCHRP Report 350 or MASH compliant).

http://safety.fhwa.dot.gov/roadway_dept/policy_guide/road_hardware/wzd

- All construction equipment, including vehicles, materials, and debris, shall be stored outside of the clear zone. Where this cannot be achieved the contractor shall place appropriate signs, abject identifiers, and/or barricades in compliance with the MUTCD.
- Except when required for safety, traffic control shall not block any lanes or sidewalks when work is not being performed.
- Steel plating is to be used to cover unfinished areas of the trench overnight to protect trench from pedestrian traffic. Cost for steel plating is subsidiary to "Traffic Control"
- Each trench drain will be completely replaced. Existing drop inlets are to remain in place.



© 2025 GARVER, LLC
THIS DOCUMENT, ALONG WITH THE IDEAS AND DESIGNS CONVEYED HEREIN, SHALL BE CONSIDERED INSTRUMENTS OF PROFESSIONAL SERVICE AND ARE PROPERTY OF GARVER, LLC. ANY USE, REPRODUCTION, OR DISTRIBUTION OF THIS DOCUMENT, ALONG WITH THE IDEAS AND DESIGN CONTAINED HEREIN, IS PROHIBITED UNLESS AUTHORIZED IN WRITING BY GARVER, LLC OR EXPLICITLY ALLOWED IN THE GOVERNING PROFESSIONAL SERVICES AGREEMENT FOR THIS WORK.

1995 Midfield Road
Wichita, KS 67209
(316) 264-8008



REV.	DATE	DESCRIPTION	BY



CITY OF WICHITA
WICHITA, KANSAS

OLD TOWN SLOTTED
TRENCH DRAINS

GENERAL NOTES

JOB NO.: T41-2500697
DATE: JULY 2025
DESIGNED BY: KWL
DRAWN BY: DWS

BAR IS ONE INCH ON ORIGINAL DRAWING
0 1"
IF NOT ONE INCH ON THIS SHEET, ADJUST SCALES ACCORDINGLY.

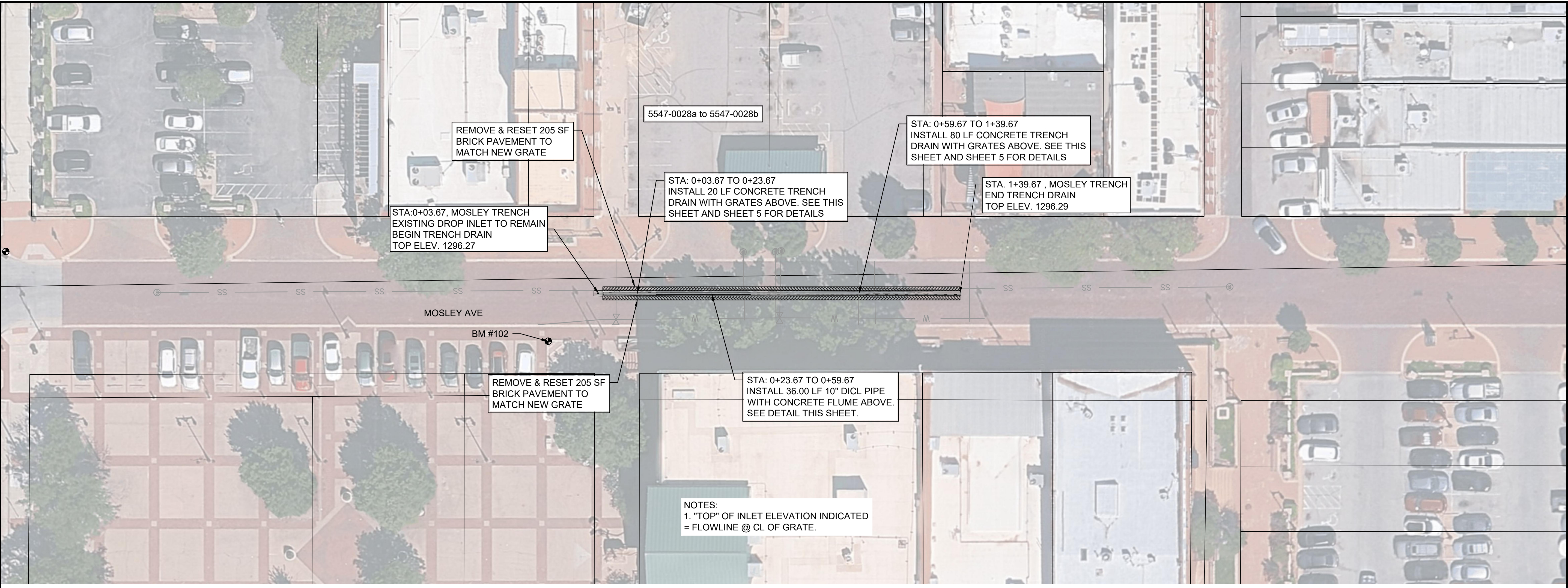
DRAWING NUMBER

SHEET NUMBER **2** OF **6**



© 2025 GARVER, LLC
 THIS DOCUMENT, ALONG WITH THE IDEAS AND DESIGNS CONVEYED HEREIN, SHALL BE CONSIDERED INSTRUMENTS OF PROFESSIONAL SERVICE AND ARE PROPERTY OF GARVER, LLC. ANY USE, REPRODUCTION, OR DISTRIBUTION OF THIS DOCUMENT, ALONG WITH THE IDEAS AND DESIGN CONTAINED HEREIN, IS PROHIBITED UNLESS AUTHORIZED IN WRITING BY GARVER, LLC OR EXPLICITLY ALLOWED IN THE GOVERNING PROFESSIONAL SERVICES AGREEMENT FOR THIS WORK.

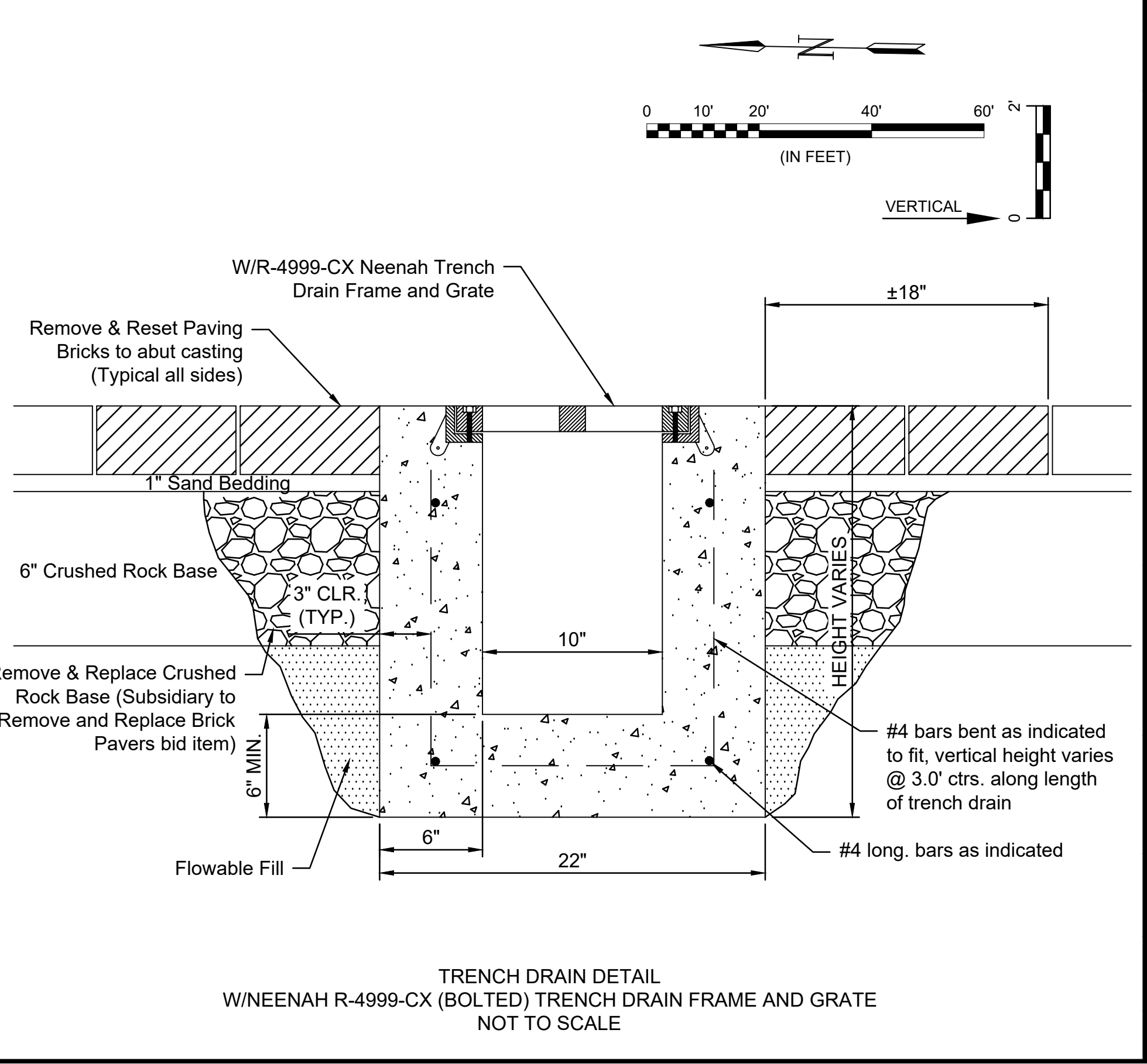
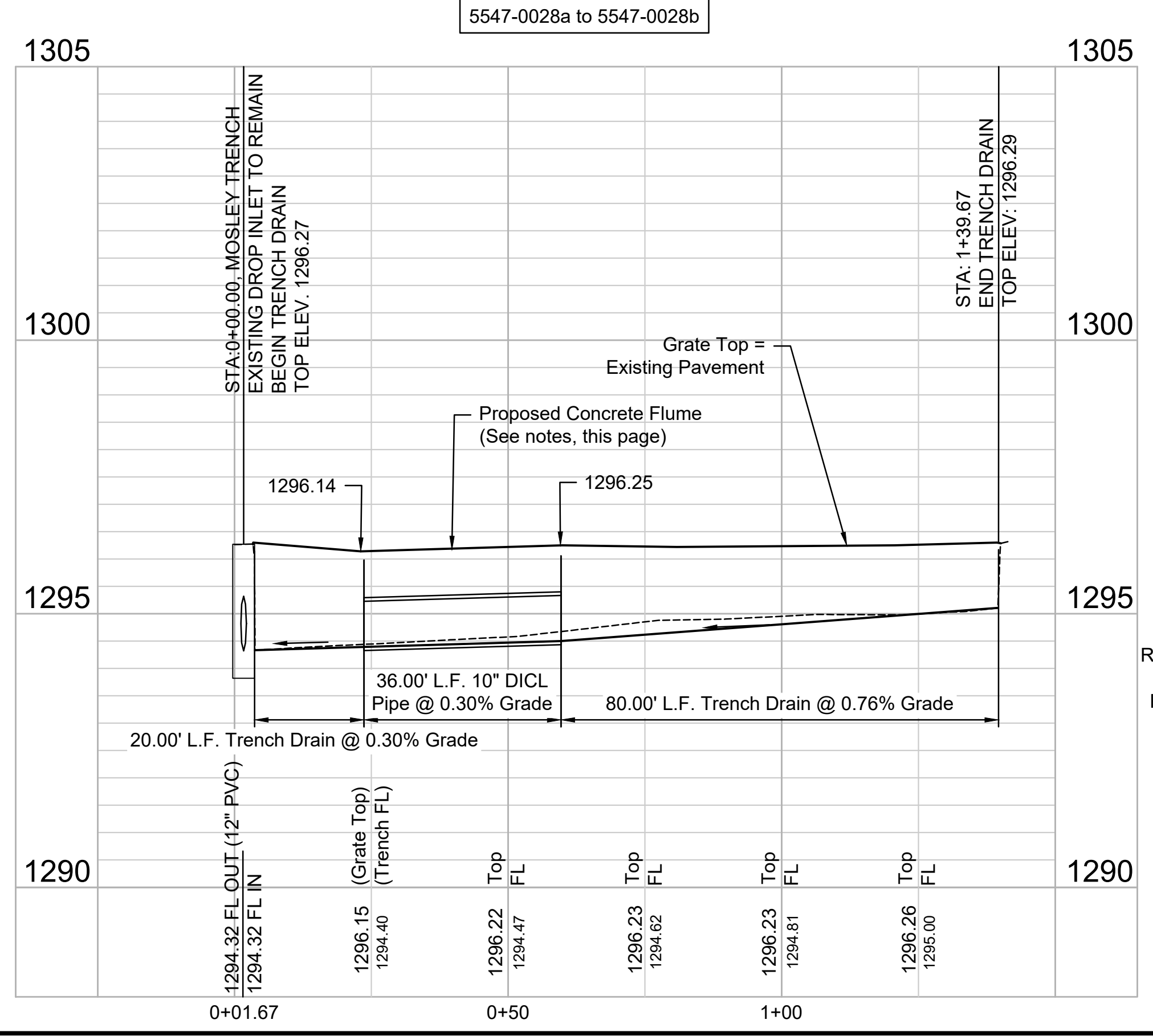
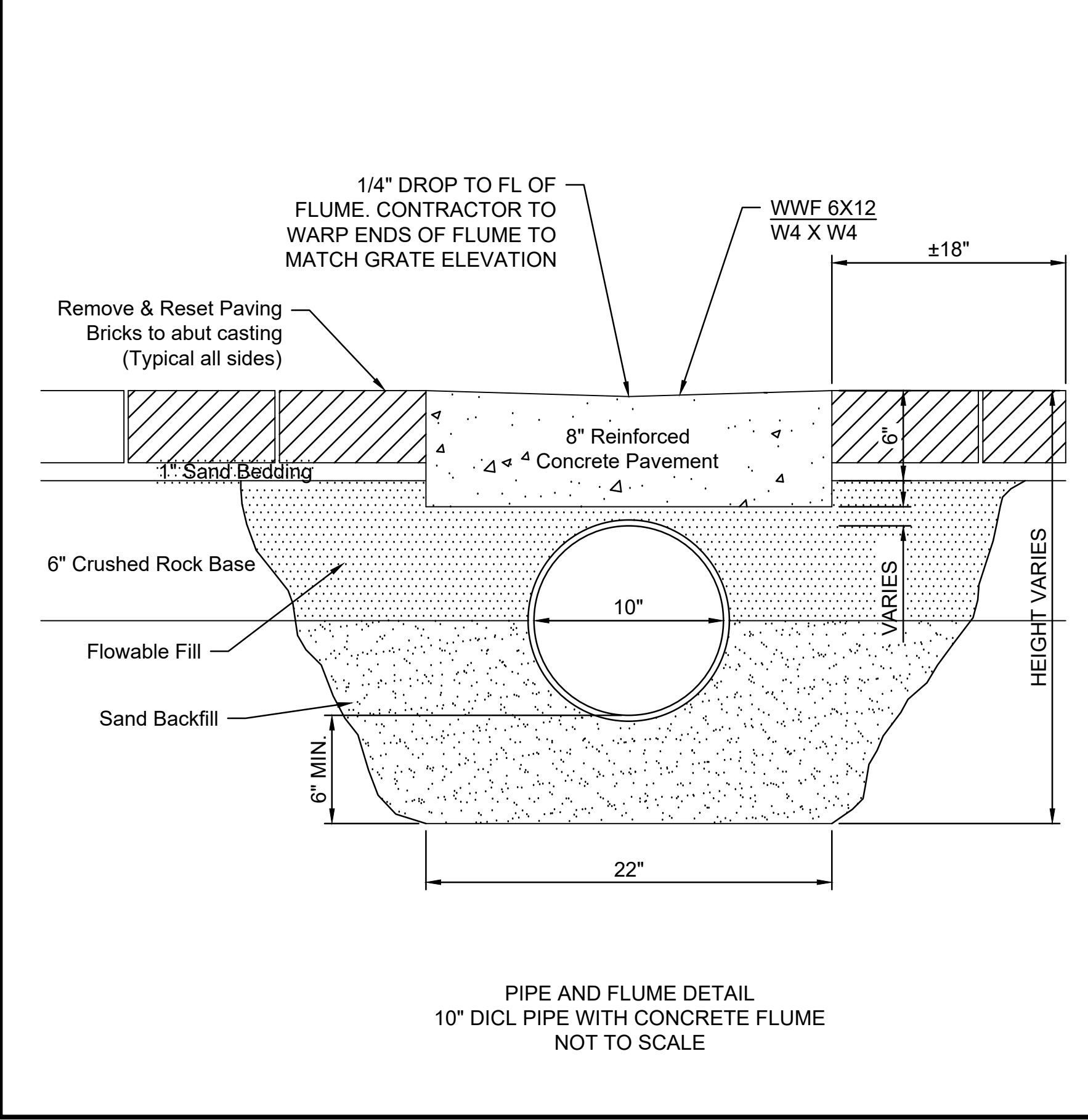
1995 Midfield Road
 Wichita, KS 67209
 (316) 264-8008



NOTES:
 1. "TOP" OF INLET ELEVATION INDICATED = FLOWLINE @ CL OF GRATE.

REV.	DATE	DESCRIPTION	BY

File: L:\2025\141-2500697 - Old Town Slotted Grate Replacement\Drawings_TRENCH DRAINS\MOSLEY TRENCH DRAIN.dwg Last Save: 7/17/2025 8:47 AM Last saved by: DWSawyer
 Last plotted by: Sawyer, Drake W. Plot Date: 7/17/2025 8:54 AM Plotter used: None
 Plot Scale: 1:2,884.9



CITY OF WICHITA
 WICHITA, KANSAS

OLD TOWN SLOTTED TRENCH DRAINS

MOSLEY TRENCH DRAIN

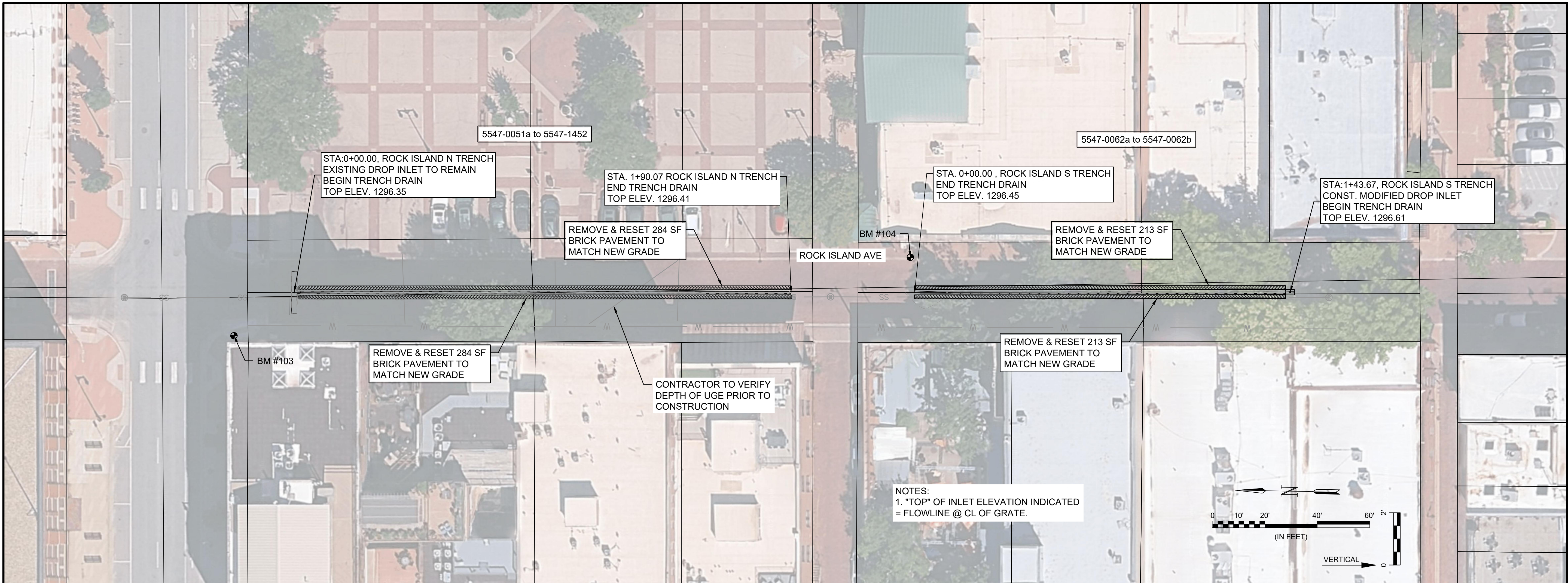
JOB NO.: T41-2500697
 DATE: JULY 2025
 DESIGNED BY: KWL
 DRAWN BY: DWS

BAR IS ONE INCH ON ORIGINAL DRAWING
 IF NOT ONE INCH ON THIS SHEET, ADJUST SCALES ACCORDINGLY.

DRAWING NUMBER

SHEET NUMBER **3** OF **6**

File: L:\2025\T41-2500697 - Old Town Slotted Grate Replacement\Drawings\TRENCH DRAINS\ROCK ISLAND TRENCH DRAINS.dwg Last Save: 7/14/2025 1:27 PM Last saved by: DWSawyer
 Last plotted by: Sawyer, Drake W. Plot Style: --- Plot Scale: 1:2,884.9 Plot Date: 7/17/2025 8:54 AM Plotter used: None

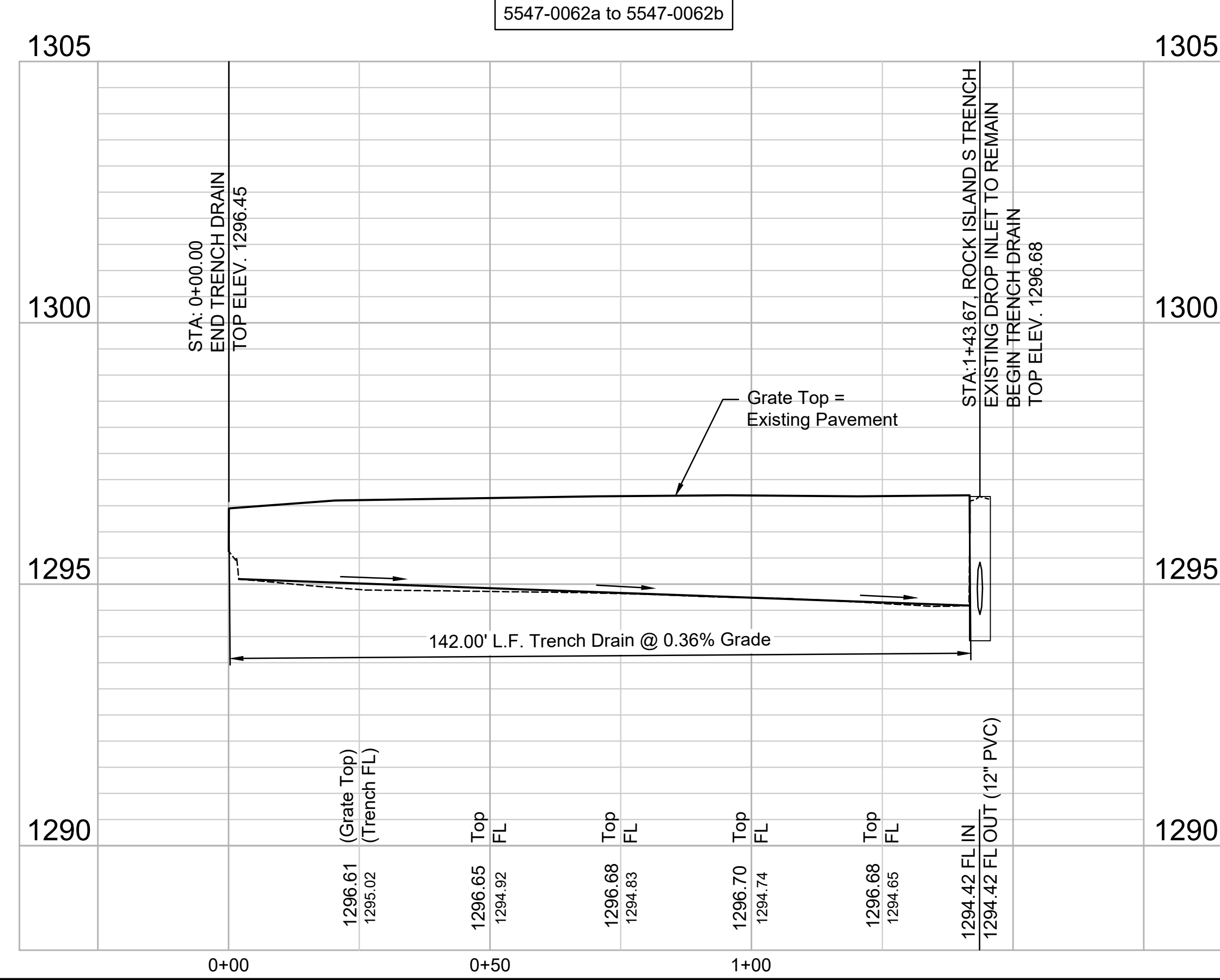
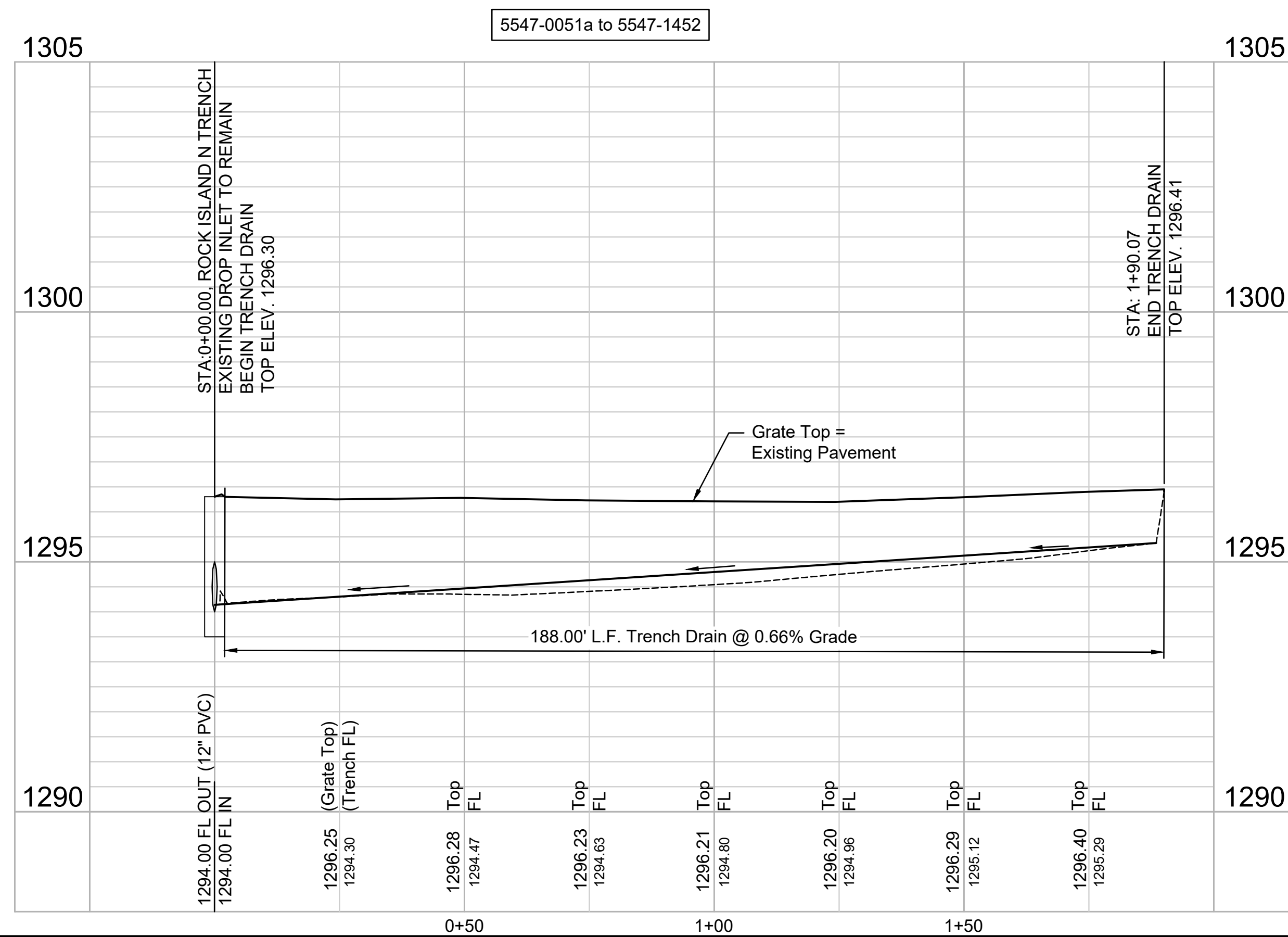


GARVER
 © 2025 GARVER, LLC
 THIS DOCUMENT, ALONG WITH THE IDEAS AND DESIGNS CONVEYED HEREIN, SHALL BE CONSIDERED INSTRUMENTS OF PROFESSIONAL SERVICE AND ARE PROPERTY OF GARVER, LLC. ANY USE, REPRODUCTION, OR DISTRIBUTION OF THIS DOCUMENT, ALONG WITH THE IDEAS AND DESIGN CONTAINED HEREIN, IS PROHIBITED UNLESS AUTHORIZED IN WRITING BY GARVER, LLC OR EXPLICITLY ALLOWED IN THE GOVERNING PROFESSIONAL SERVICES AGREEMENT FOR THIS WORK.

1995 Midfield Road
 Wichita, KS 67209
 (316) 264-8008

KENNETH W. LEE
 LICENSED PROFESSIONAL ENGINEER
 KANSAS
 7-17-25
 13373

REV.	DATE	DESCRIPTION	BY



CITY OF WICHITA
 WICHITA, KANSAS

OLD TOWN SLOTTED
 TRENCH DRAINS

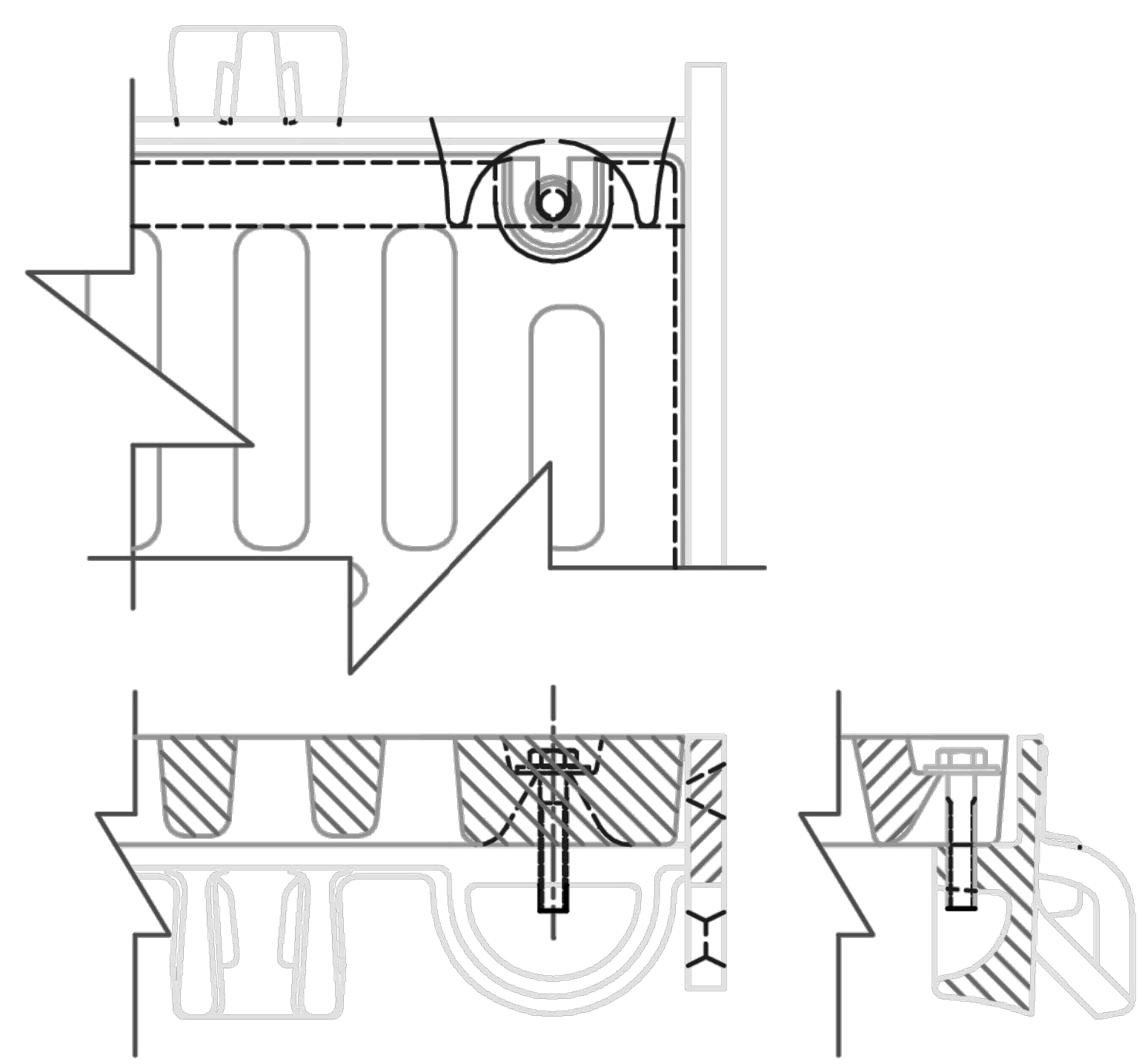
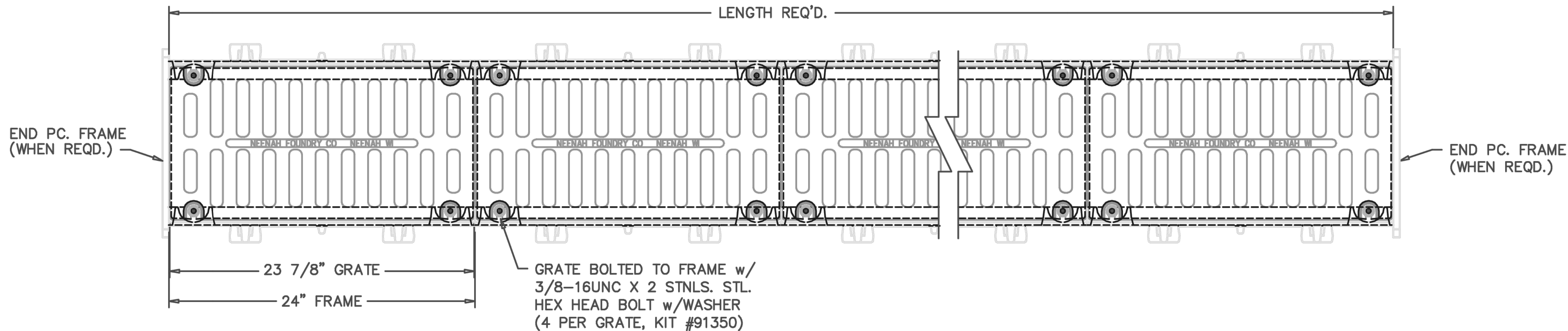
ROCK ISLAND
 TRENCH
 DRAINS

JOB NO.: T41-2500697
 DATE: JULY 2025
 DESIGNED BY: KWL
 DRAWN BY: DWS

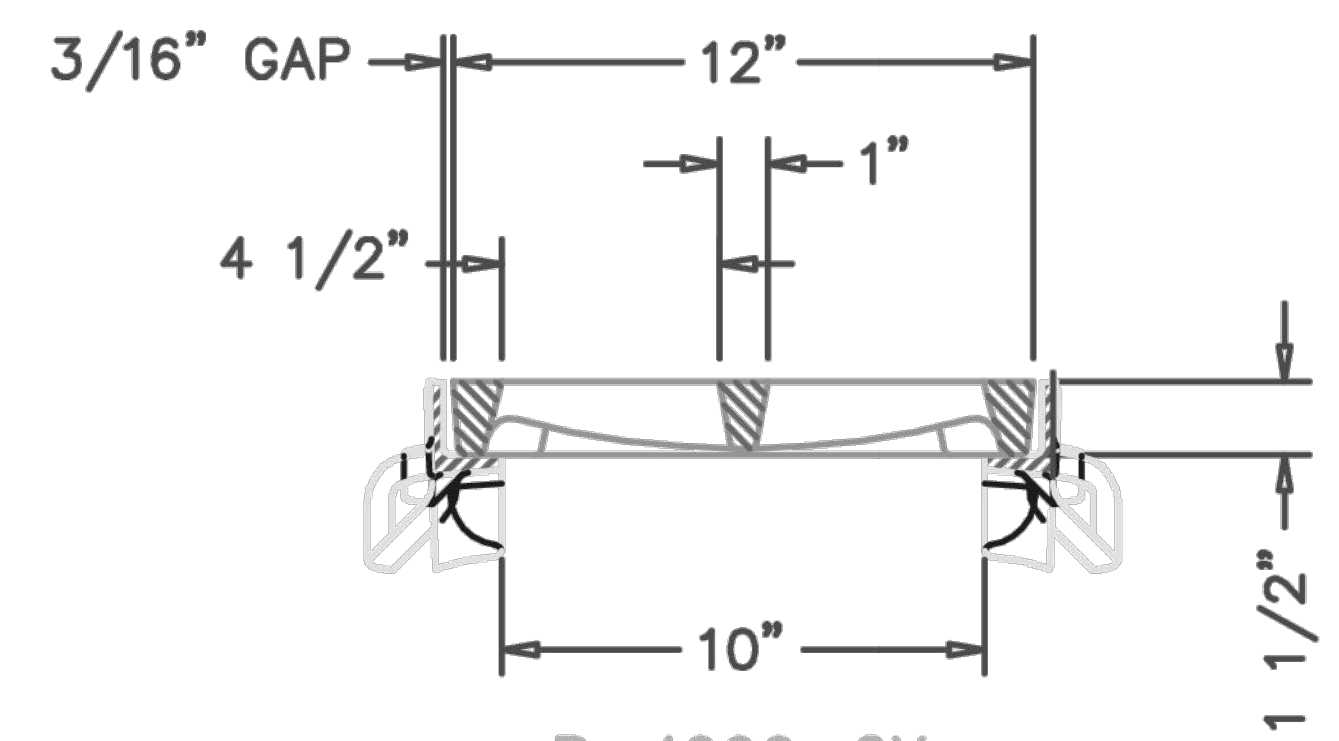
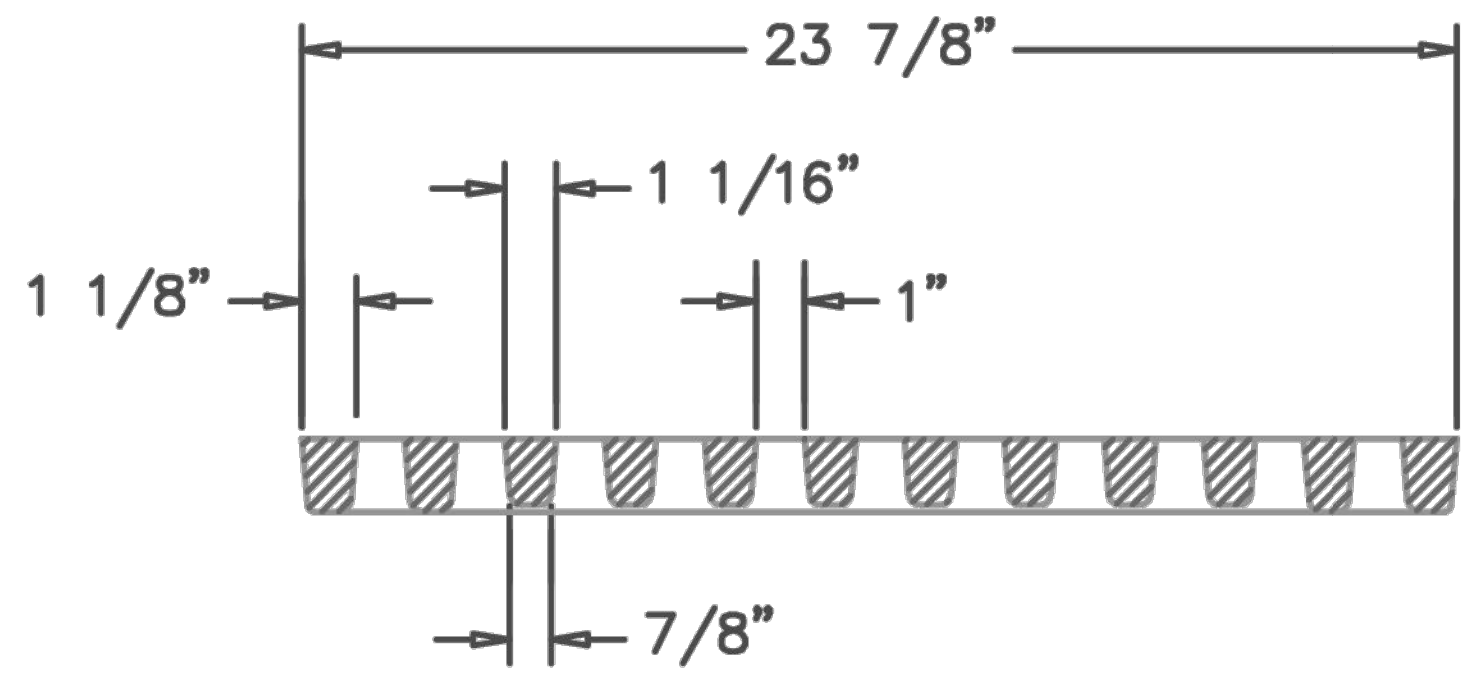
BAR IS ONE INCH ON ORIGINAL DRAWING
 0 1" = 100'
 IF NOT ONE INCH ON THIS SHEET, ADJUST SCALES ACCORDINGLY.

DRAWING NUMBER

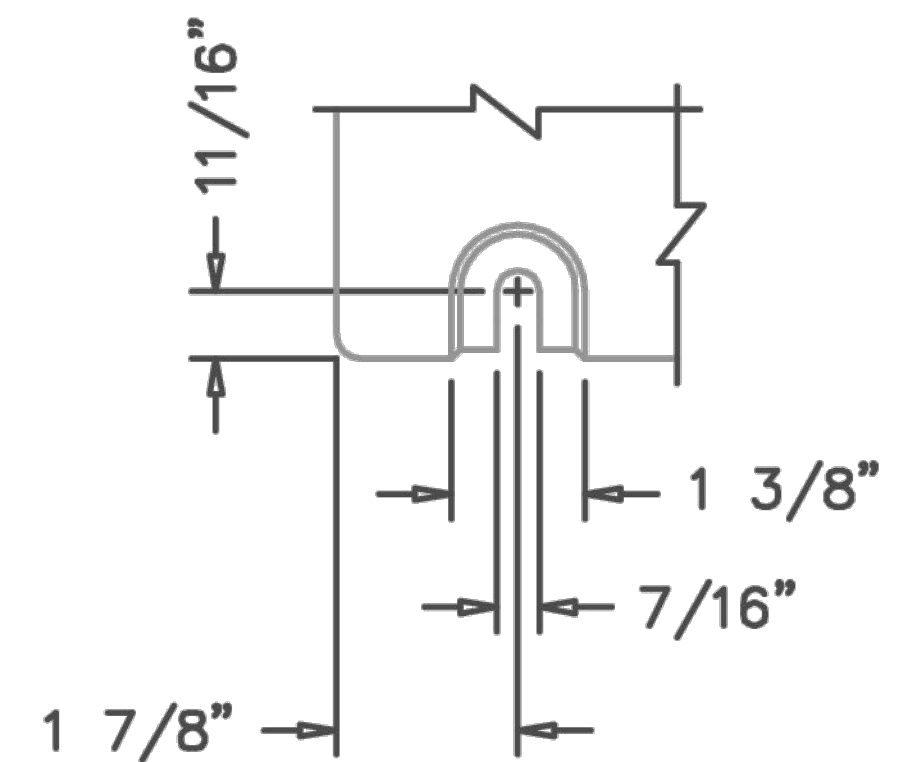
SHEET NUMBER **4** OF **6**



FRAME & GRATE
SHOWING DEBRIS CHUTE
SCALE 1:4



R-4999-CX
TYPE "A" GRATE
WITH TYPE "B" FRAME
TYPICAL SECTION

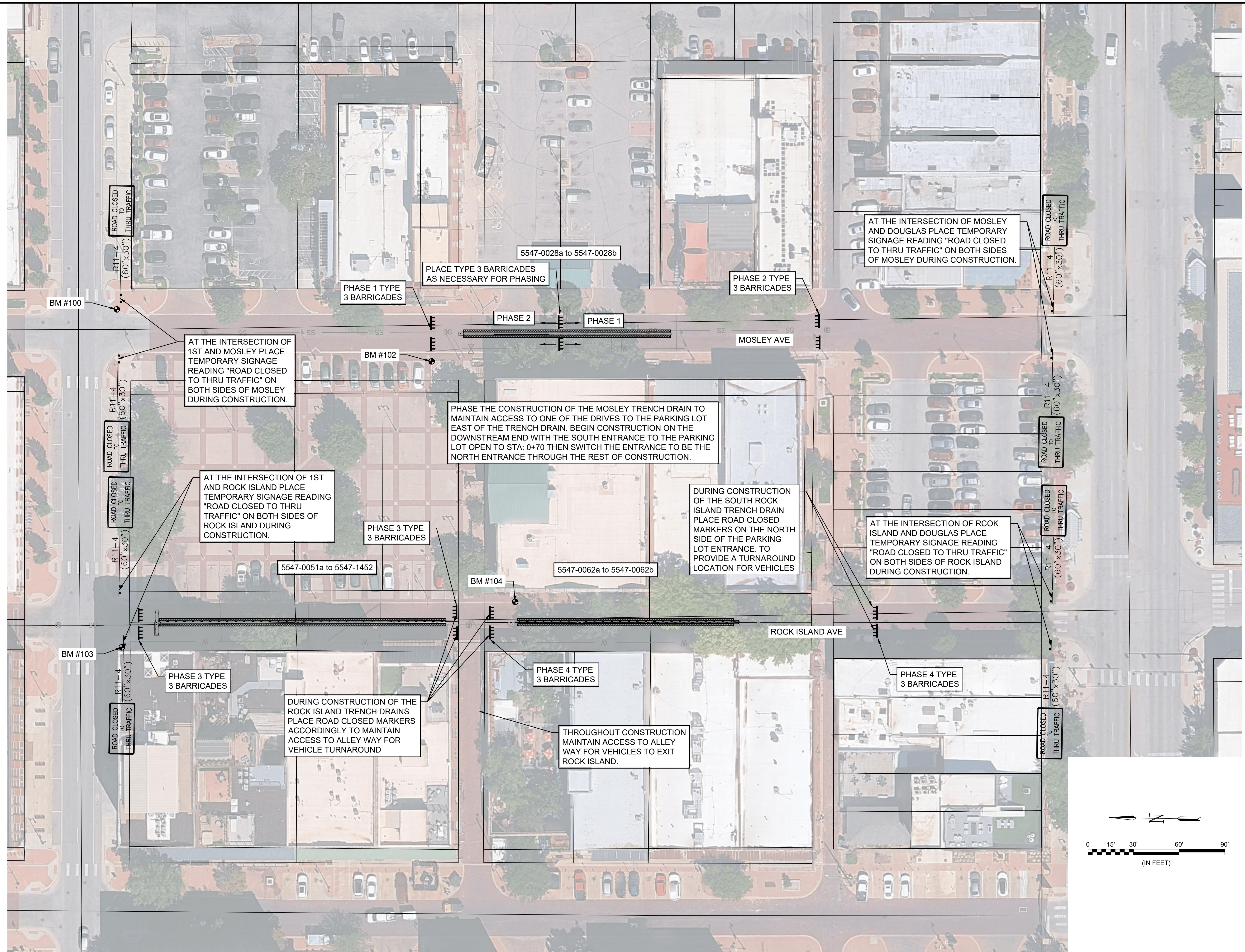


BOLT SLOT DETAIL
SCALE 1:4

NOTES: FRAMES AND COVERS ARE FURNISHED IN STANDARD 2'-0" INCREMENTS. SPECIAL LENGTH FRAMES AND COVERS ARE FURNISHED FOR ANY OVERALL LENGTH.
 COMPONENT NOS.: GRATE 4999-3121, SIDE PC. FRAME 4999-2415, END PC. FRAME 4990-3112 (IF REQUIRED)
 MATERIAL: SIDE PC. FRAMES - CAST GRAY IRON ASTM A-48, CLASS 35A
 END PC. FRAMES AND GRATES - CAST GRAY IRON ASTM A-48, CLASS 35B
 FINISH: NO PAINT

DR. K. HOGE	SCALE 1/8"=1"	TITLE: R-4999-CX TYPE "A" GRATE W/ TYPE "B" FRAME
CH.		
APP.	DIM CHK.	NEENAH FOUNDRY COMPANY NEENAH WISCONSIN 54956
DATE 12-11-08		NF-4999CX AB

File: L:\2025\T41-2500697 - Old Town Slotted Grate Replacement\Drawings\TRENCH DRAINS\TRAFFIC CONTROL.dwg Last Save: 7/17/2025 8:06 AM Last saved by: DWSawyer
 Last plotted by: Sawyer, Drake W. Plot Style: Plot Scale: 1:2,884.9 Plot Date: 7/17/2025 8:55 AM Plotter used: None



© 2025 GARVER, LLC
 THIS DOCUMENT, ALONG WITH THE IDEAS AND DESIGNS CONVEYED HEREIN, SHALL BE CONSIDERED INSTRUMENTS OF PROFESSIONAL SERVICE AND ARE PROPERTY OF GARVER, LLC. ANY USE, REPRODUCTION, OR DISTRIBUTION OF THIS DOCUMENT, ALONG WITH THE IDEAS AND DESIGN CONTAINED HEREIN, IS PROHIBITED UNLESS AUTHORIZED IN WRITING BY GARVER, LLC OR EXPLICITLY ALLOWED IN THE GOVERNING PROFESSIONAL SERVICES AGREEMENT FOR THIS WORK.

1995 Midfield Road
 Wichita, KS 67209
 (316) 264-8008



REV.	DATE	DESCRIPTION	BY



CITY OF WICHITA
 WICHITA, KANSAS
 OLD TOWN SLOTTED
 TRENCH DRAINS

TRAFFIC CONTROL

JOB NO.: T41-2500697
 DATE: JULY 2025
 DESIGNED BY: KWL
 DRAWN BY: DWS

BAR IS ONE INCH ON ORIGINAL DRAWING
 0 15' 30' 60' 90'
 (IN FEET)
 IF NOT ONE INCH ON THIS SHEET, ADJUST SCALES ACCORDINGLY.

DRAWING NUMBER