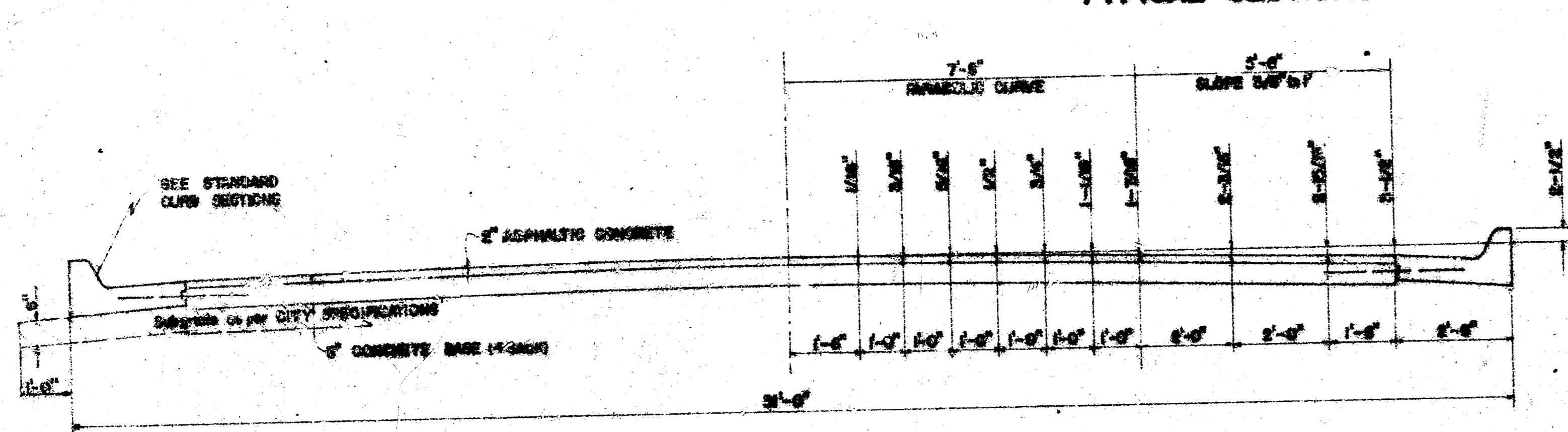
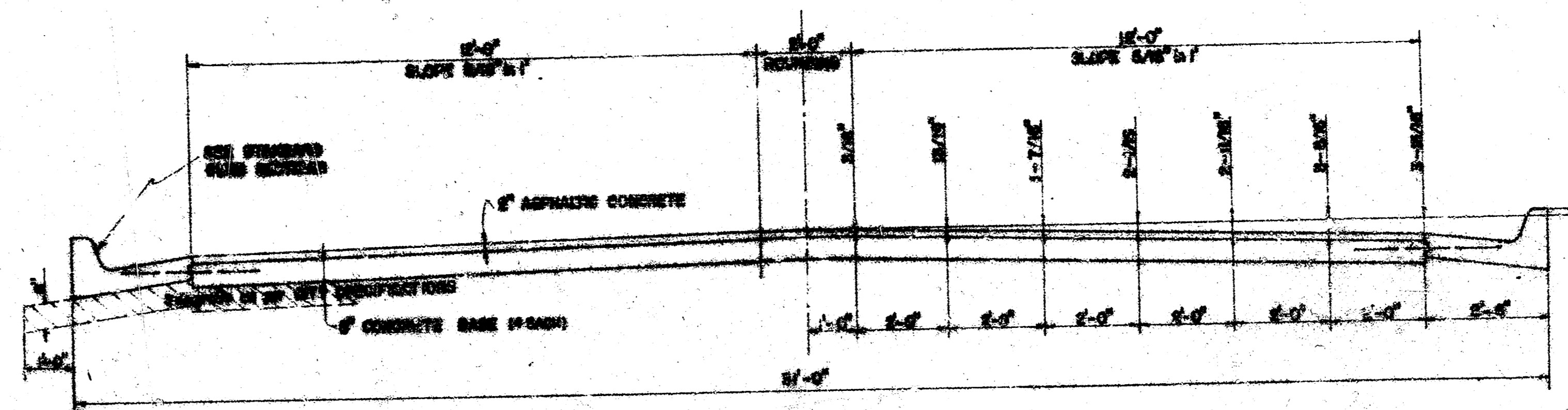


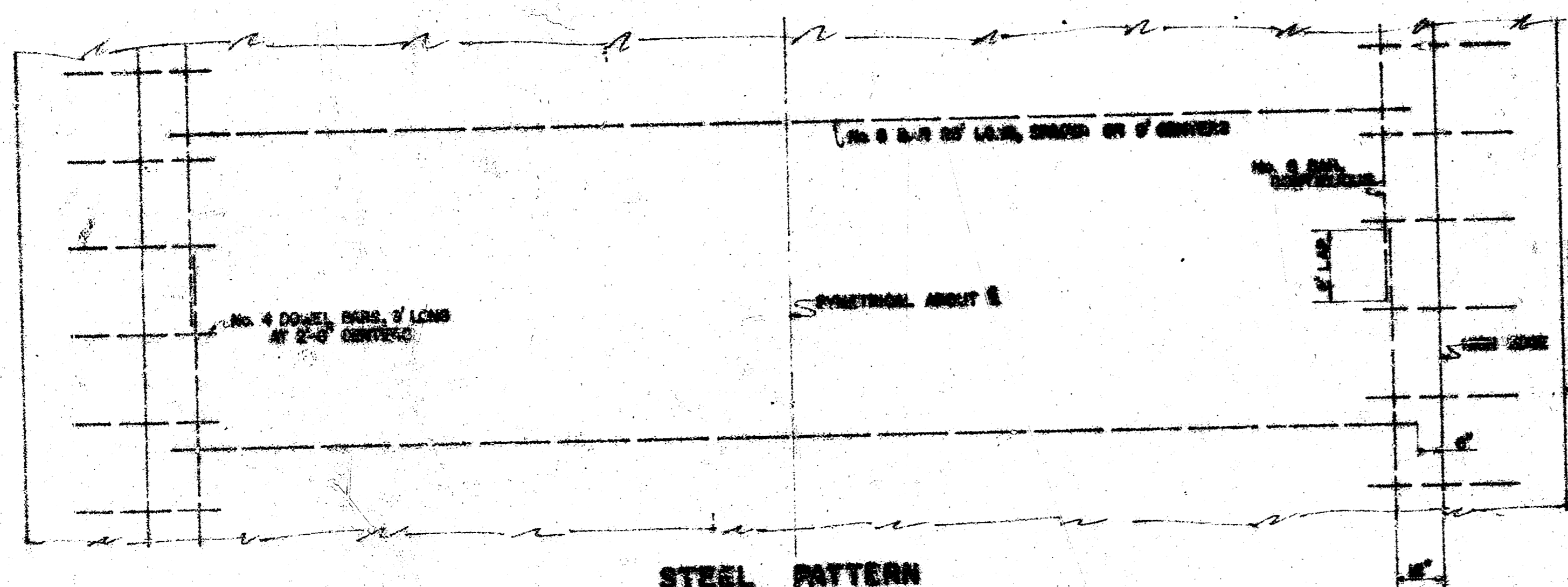
PINECREST AVENUE
N.L. 31 ST. STREET SOUTH TO S.L. BRANDYWINE ROAD
TYPICAL SECTIONS of 3" ASPHALTIC CONCRETE PAVEMENT



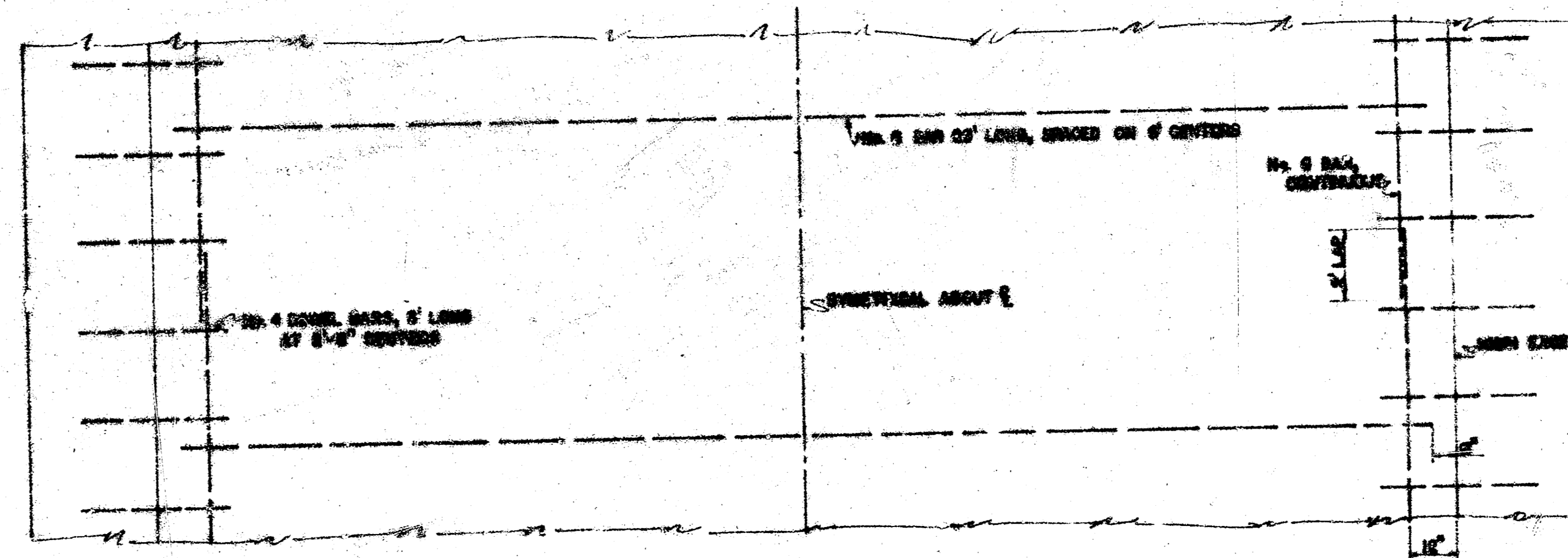
TYPICAL SECTION WITH STANDARD CROWN



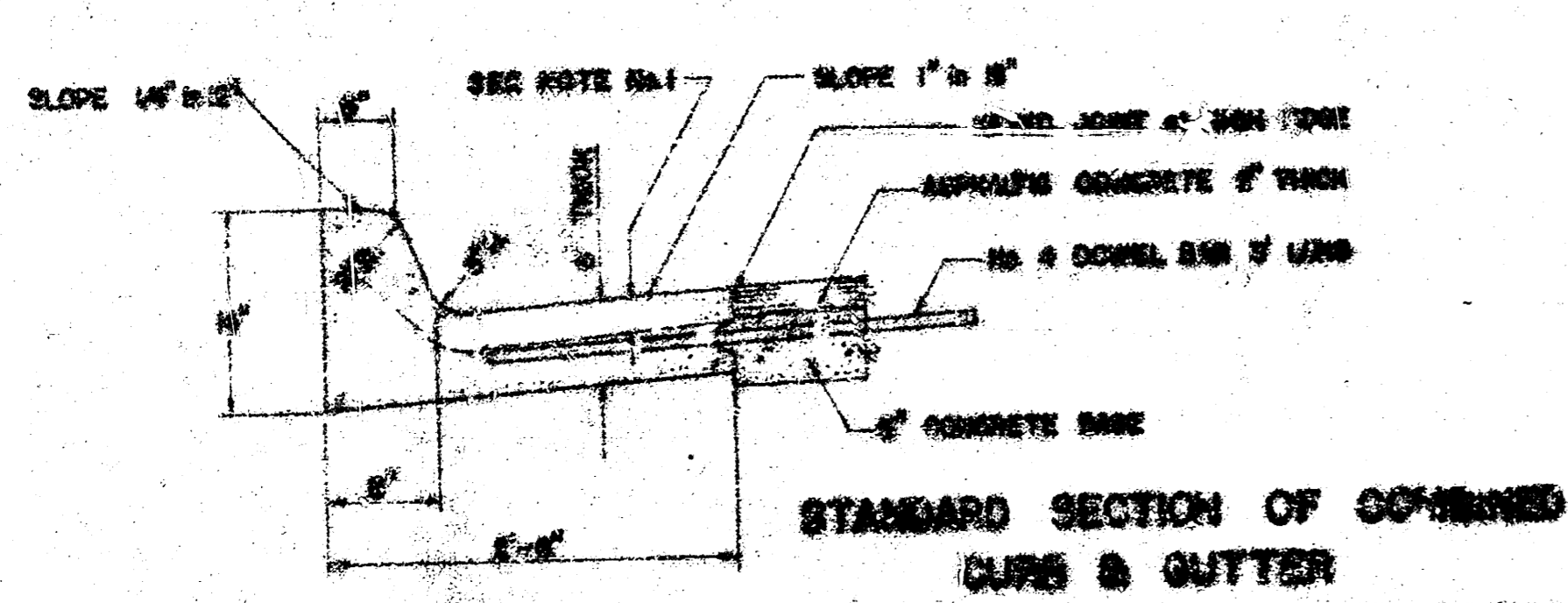
TYPICAL SECTION WITH ALTERNATE CROWN



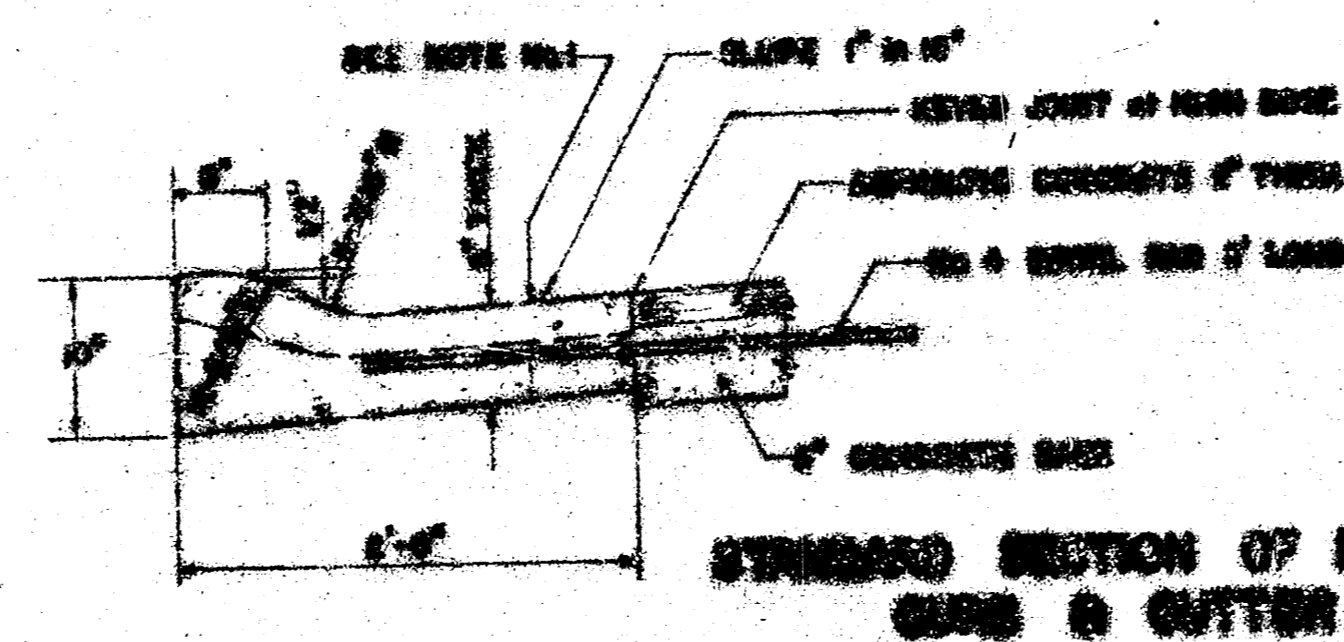
STEEL PATTERN



STEEL PATTERN



STANDARD SECTION OF COMBINED CURB & GUTTER



STANDARD SECTION OF ROLL-TYPE CURB & GUTTER

GENERAL NOTES
 1. CONTRAST JOINTS MAY BE CONSTRUCTED BY
 REINFORCED CURB AND GUTTER BY SETTING IN AN
 APPROVED CONCRETE MIX. THE MIX PUT SHALL
 EXTEND 6" MIN. BELOW THE SURFACE OF THE PAVEMENT
 AND CURB. CONTRAST JOINTS SHALL
 HAVE A MINIMUM SPACING OF 12' AND BE FILLED
 WITH A SPECIAL JOINT FILLER, WHEN THIS THE
 JOINT IN THE CURB SECTION SHD. BE
 COMPLETELY FILLER.

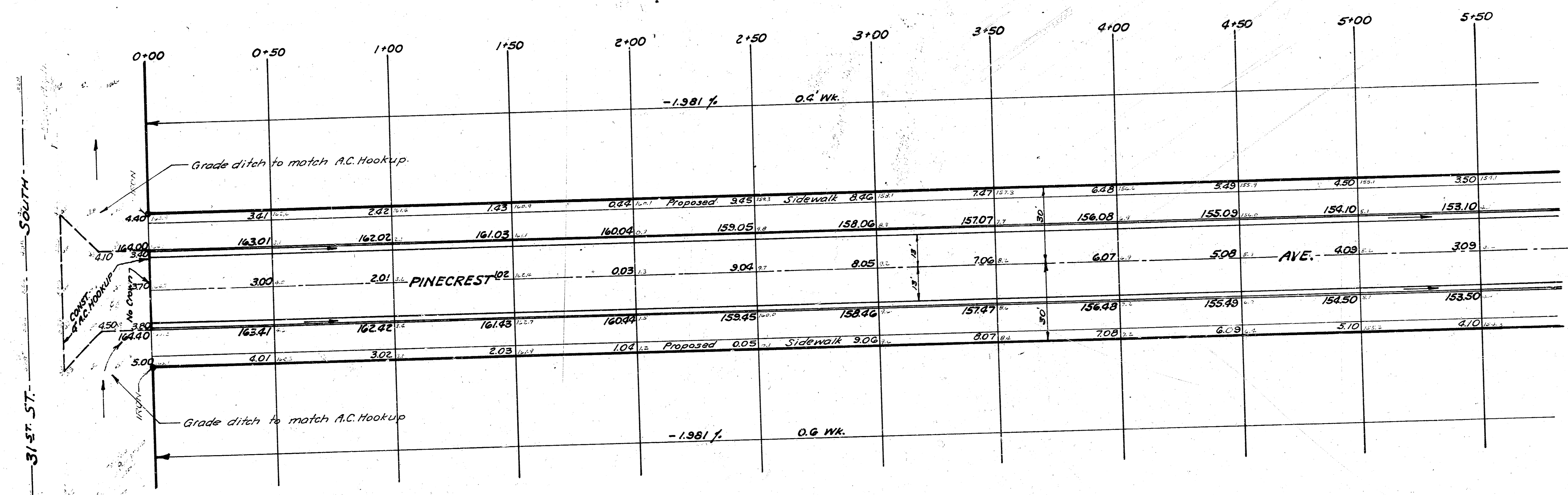
CITY OF WICHITA, KANSAS
 Department of Public Works - Engineering Division
 R. W. Linn City Engineer
 Date: NOV 1971 Project No. DAKS 571019

1/4

Scale: 1" = 20'

B.M. 156.65 S.W. corner Brick Monument
8' W. of N.L. Elpyco @ N.L. 31st St. So.

NOTE:
Contractor to clear right-of-way, grade parkings
and compact fill for proposed sidewalk.
Sidewalk to be constructed by others.

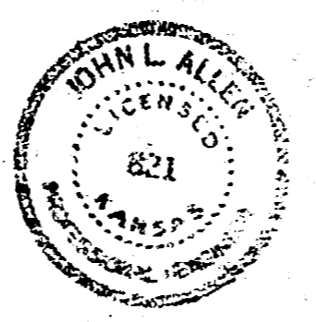
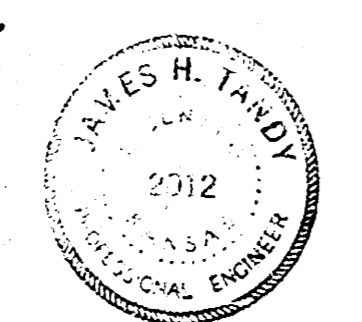


Surveyed by
 J.C.A.
 Checked by
 [Signature]

PROPERTY	
EXCAVATION	COMP. FILL
1363 Cu.Yds.	21 Cu.Yds.
+ 10% 136	2 "
Totals 2,159 Cu.Yds.	23 Cu.Yds.

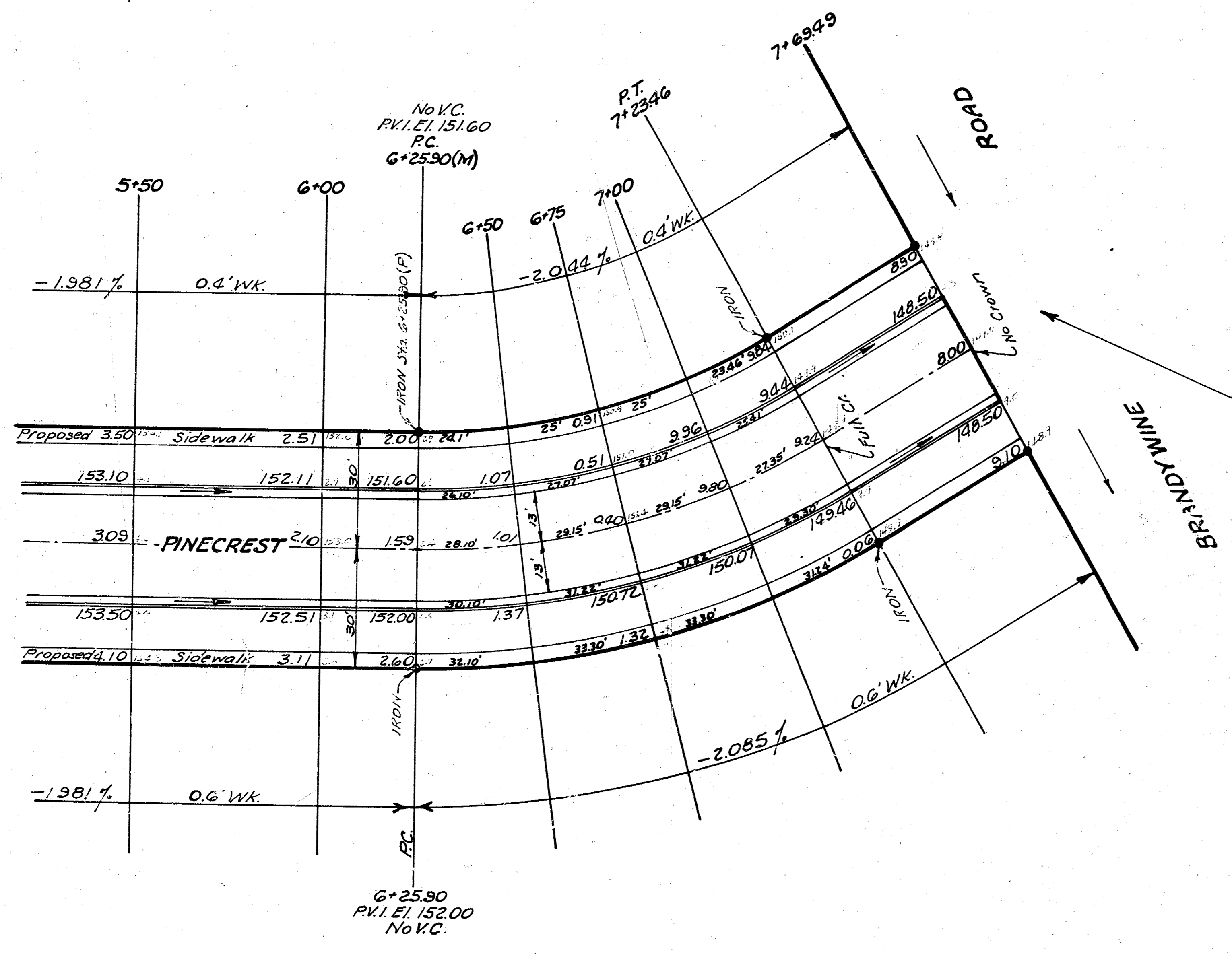
2,970 Sq.Yds. Lime Treated Subgrade.

CITY	
EXCAVATION	COMP. FILL
30 Cu.Yds.	2 "
3 "	2 "
33 Cu.Yds.	4 "



2/4

PINECREST AVENUE
 N.L. 31st STREET SOUTH to
 S.L. BRANDYWINE ROAD
 Asph. Conc. 31' & Cb. & Gtr.
 R.W. LINN CITY ENGINEER
 CITY OF WICHITA, KANSAS
 Date: Nov. 1971
 Project No. DAKS 571019



9.50697 min./ft.
Base Line is (A) Property Line

Station	Point	Alignment	Deflection	Chord	Arc	Chord	Arc
7+23.46	P.T.	$\Delta = 30^{\circ}55'$	$15^{\circ}27'30''$	24.35'	24.37'	30.33'	30.34'
7+00		$R = 180.8'$	$11^{\circ}44'27''$	25.95'	25.97'	32.31'	32.33'
6+75		$L = 87.56'$	$7^{\circ}46'47''$	25.05'	25.97'	32.31'	32.33'
6+50			$3^{\circ}49'07''$	25.01'	25.05'	31.14'	31.16'
6+25.90	P.C.						

Grade intersection to match pavement and ditch to drain.