

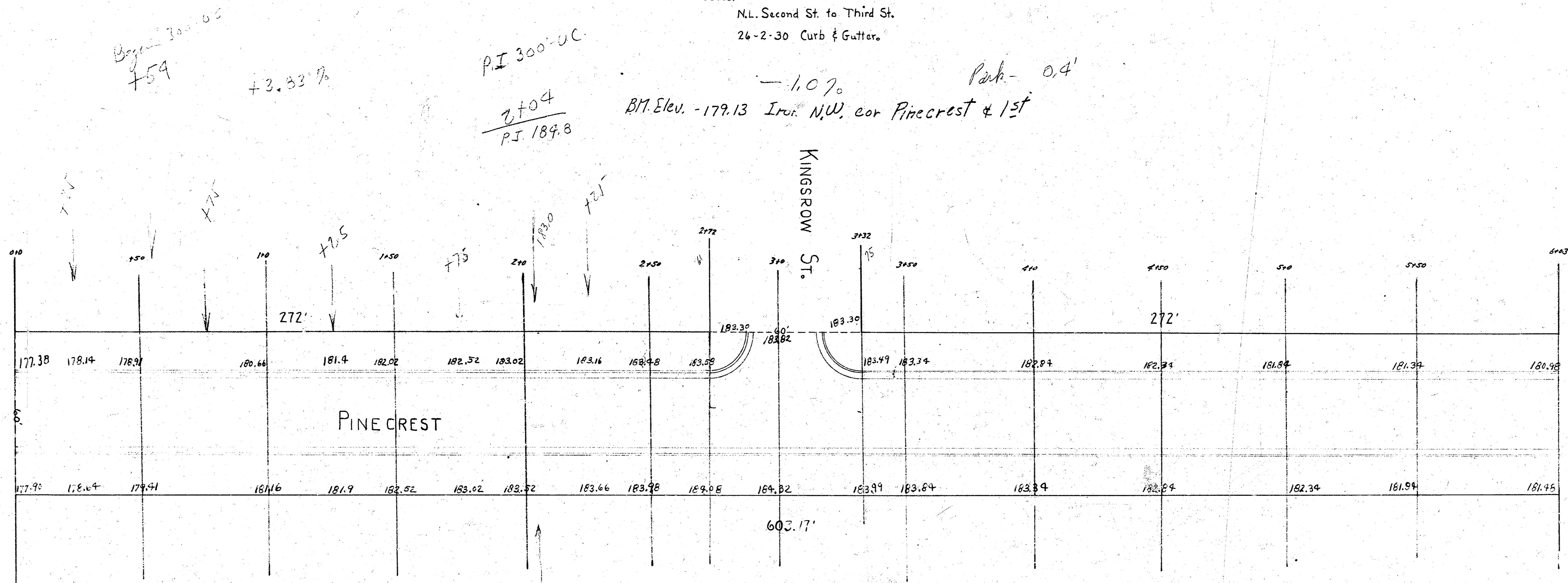
PAVING PLAN 1937

Pinecrest

N.L. Second St. to Third St.
26'-2'-30" Curb & Gutter.

SECOND

ST.



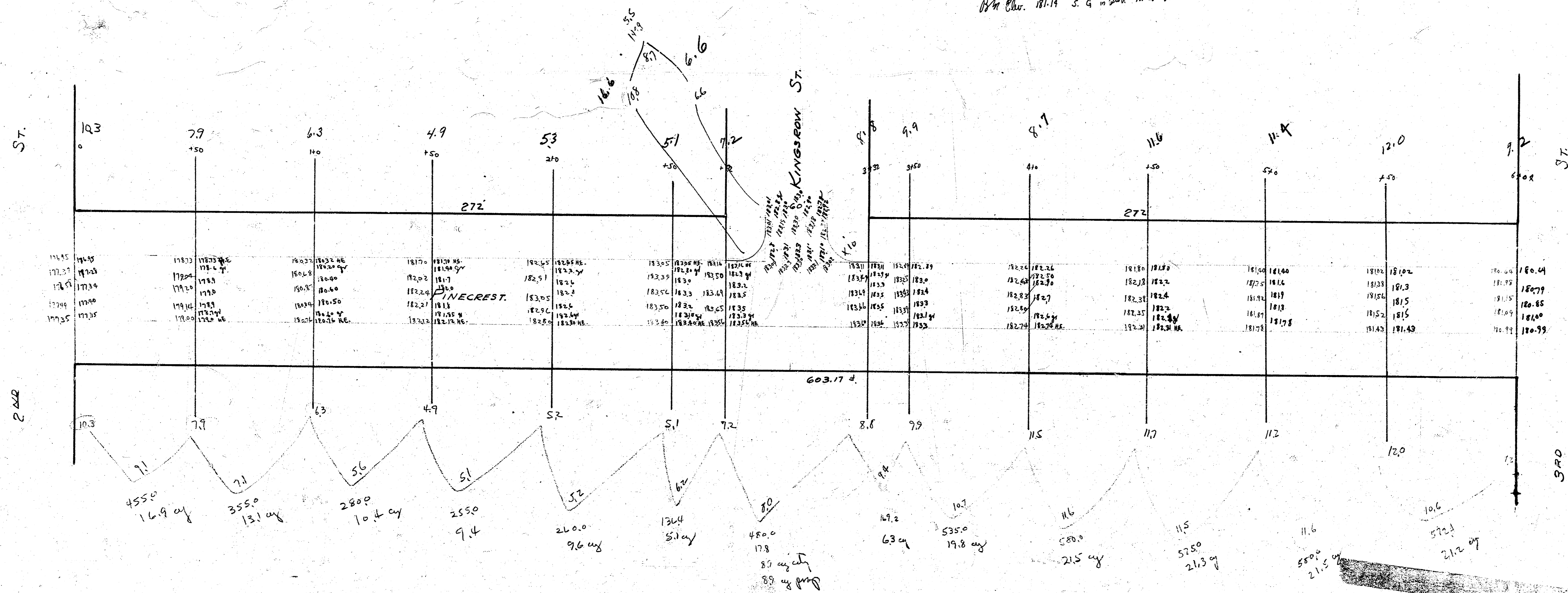
ST.

THIRD

Part 10' above to Kingsrow

PAVING PLAN PINECREST N.L. 2ND + S.L. 3RD 26' Concrete.

BM Elev. 111.14 5' 9" in 6" dia. concrete, 9 1/2' 3rd



PAVING PLAN
PINECREST
N.L. 2ND
+
S.L. 3RD
1991.

Buy
City
10 + 12.5 = 22.5
5 + 25 = 30
Subtotal = 52.5