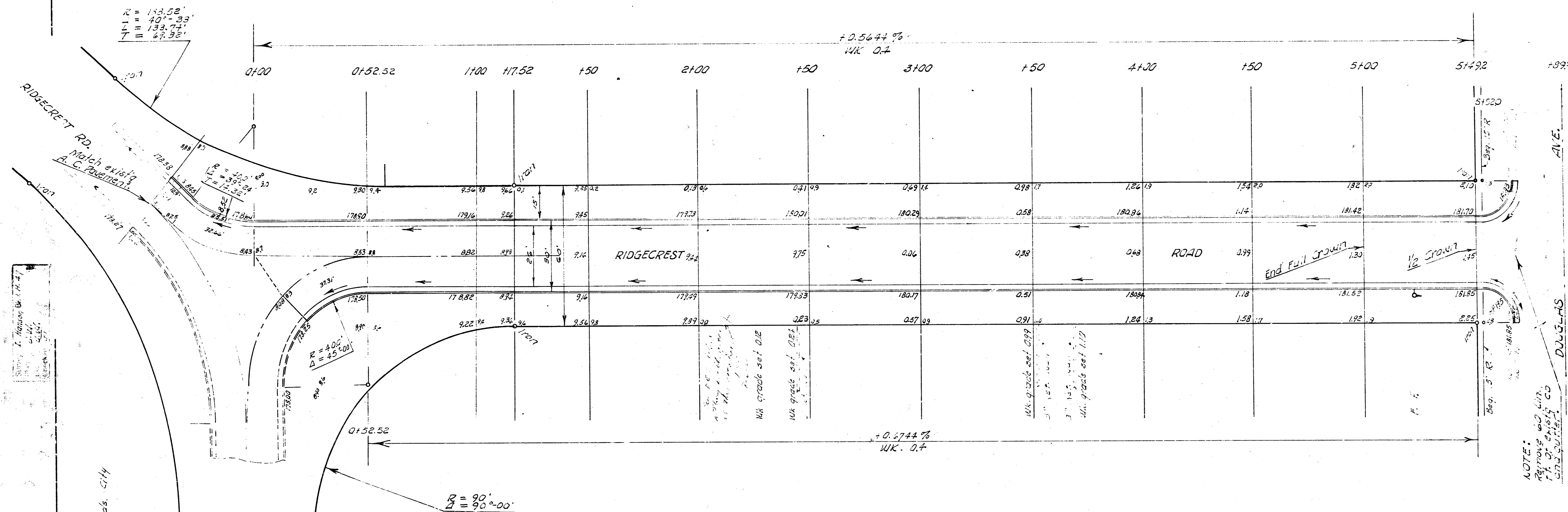
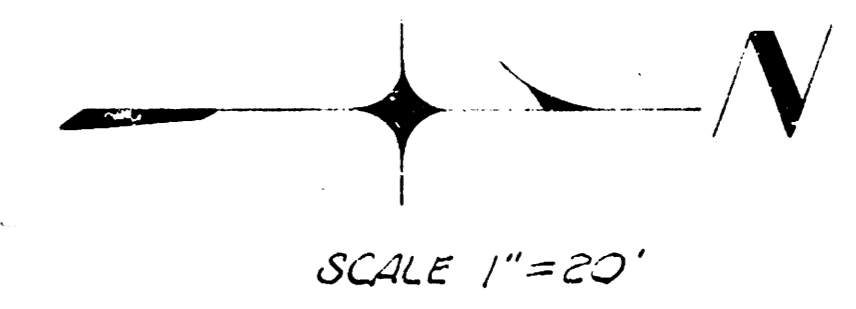


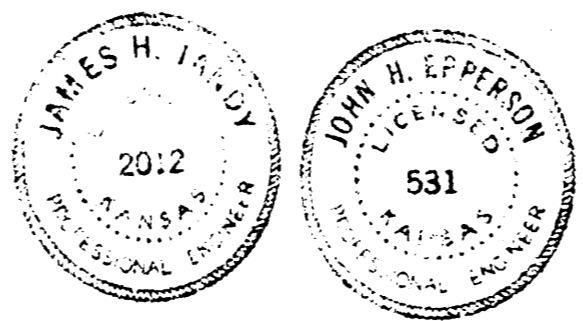
B.M. 13.85 "R" in Ritchie N curb Ridgecrest 260' E. of EL Lynwood.  
 B.M. 13.93 "D" at North curb Douglas EL Ridgecrest So.  
 Stationing from South to North along West R.



Stationing from South to North along West R.

English St.  $R = 90'$   
 $\Delta = 90^\circ - 00'$   
 $L = 117.00'$   
 $T = 58.50'$   
 $LC = 58.50'$   
 $EC = 58.50'$   
 $PC = 0+00'$   
 $PT = 1+17.00'$

EARTH WORK	
EXCAVATION	
CITY	PROP
12.1	563.2
1.8	54.3
13.9 cu. yds.	617.5 cu. yds.



**RIDGECREST ROAD**  
 SL LOT 6, BLK 1, EAST VILLAGE TO SL DOUGLAS  
 26 - 2 - 30 A. C.  
 CITY OF WICHITA, KANSAS  
 B. E. SMITH CITY ENGINEER  
 APRIL 1959, PROJ NO. 117-19