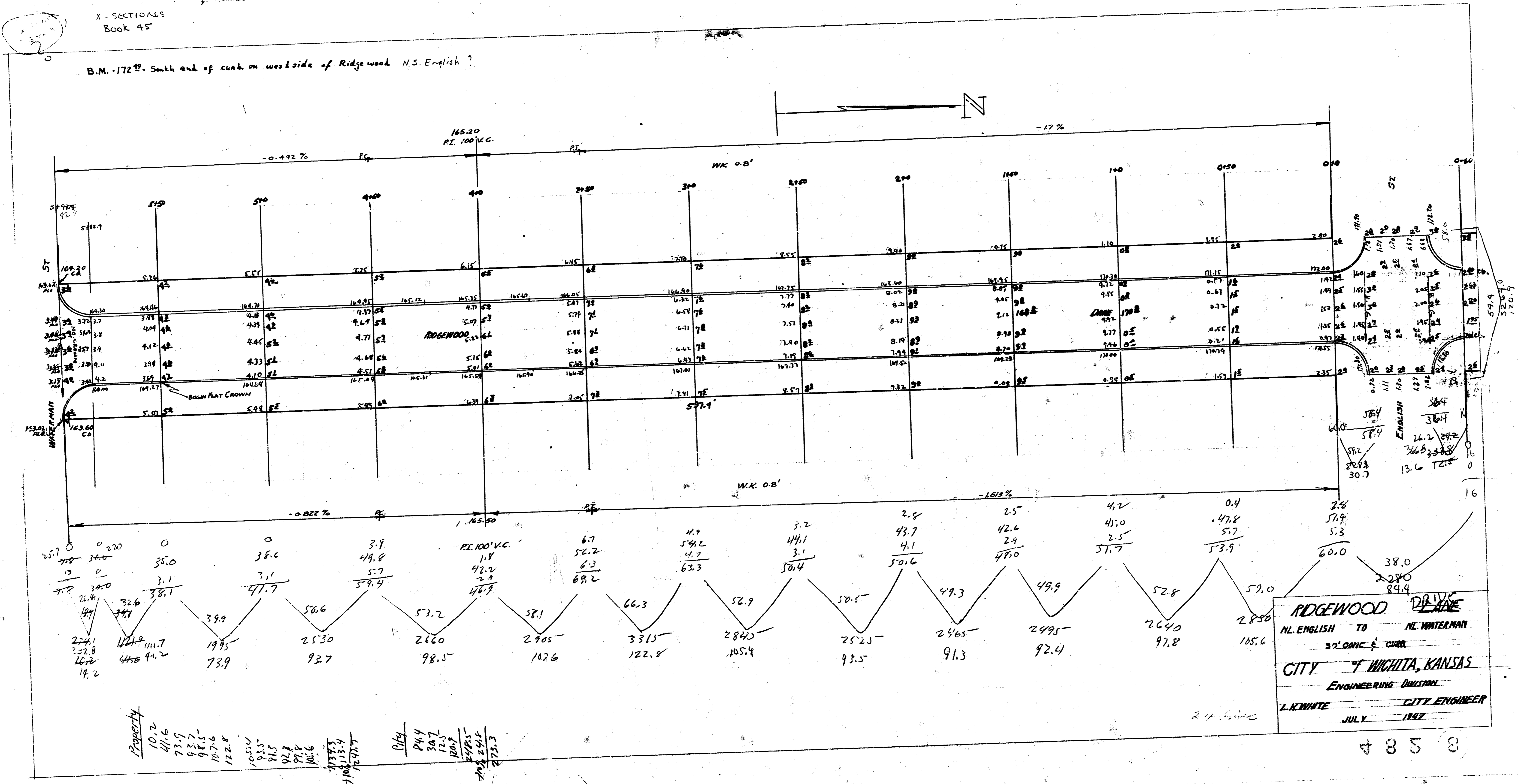


X-SECTIONS
Book 45

B.M. -172.0. South end of curb on westside of Ridge wood N.S. English?



RIDGEWOOD DRIVE
N.S. ENGLISH TO N.S. WATERMAN
30' CONC. & CURB
CITY OF WICHITA, KANSAS
ENGINEERING DIVISION
L.K. WHITE CITY ENGINEER
JULY 1927

4858