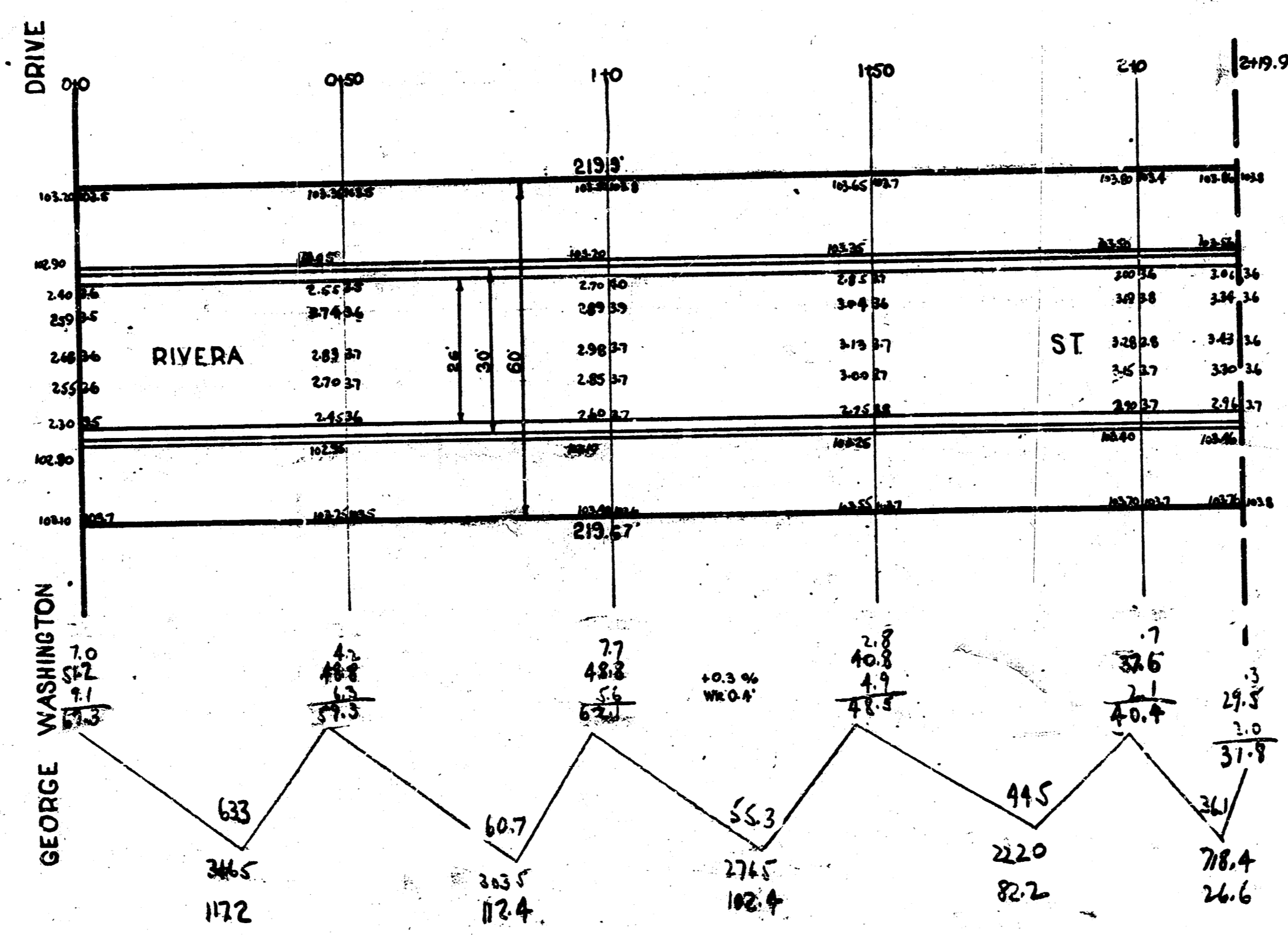
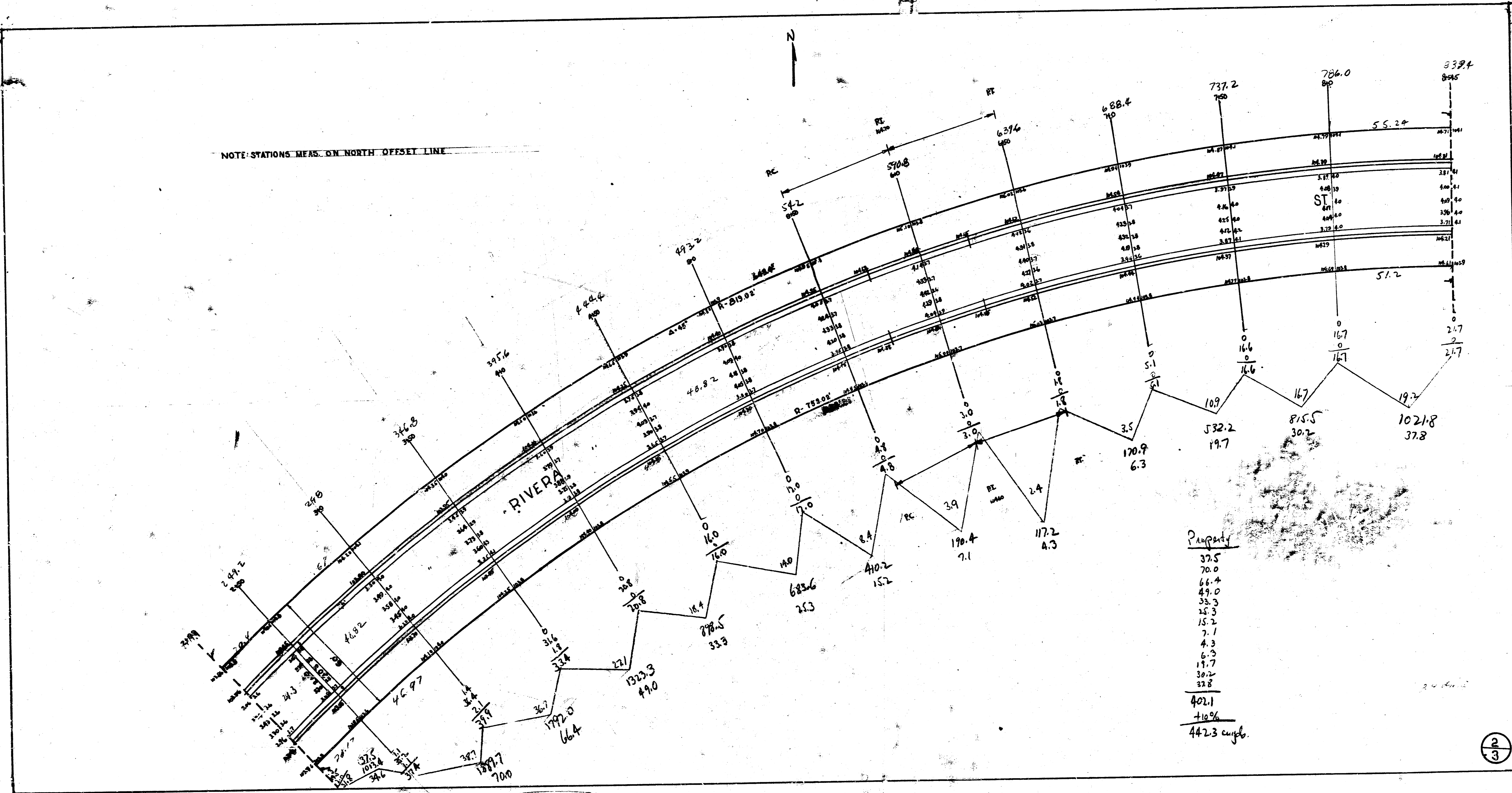


B.M. 105.04 Top of Iron W.L. Chauvaqua & S.L. Rivera

	TOTALS	
PROP		Property
4849	CITY	117.2
4822	79.1	112.4
4925		87.2
		26.6
		440.8
		+10%
14247		484.9 cu yds



RIVERA ST
 EL GEORE WASHINGTON DR TO EL CHAUTAUQUA AVE
 26'-2'-30" ASPHALT - CONCRETE
 CITY of WICHITA, KANS.
 L.K. WHITE CITY ENGINEER
 OCT. 1946



Prop
 43.0
 63.7
 72.8
 77.0
 73.0
 59.3
 63.5

 497.5
 100%

City
 192
 52.7
 71.9
 100%
 79.1
 100%

