

PLAN AND PROFILE

STREET IMPROVEMENTS

SHERRON'S GARDENS ADDITION

SEDGWICK COUNTY, KANSAS

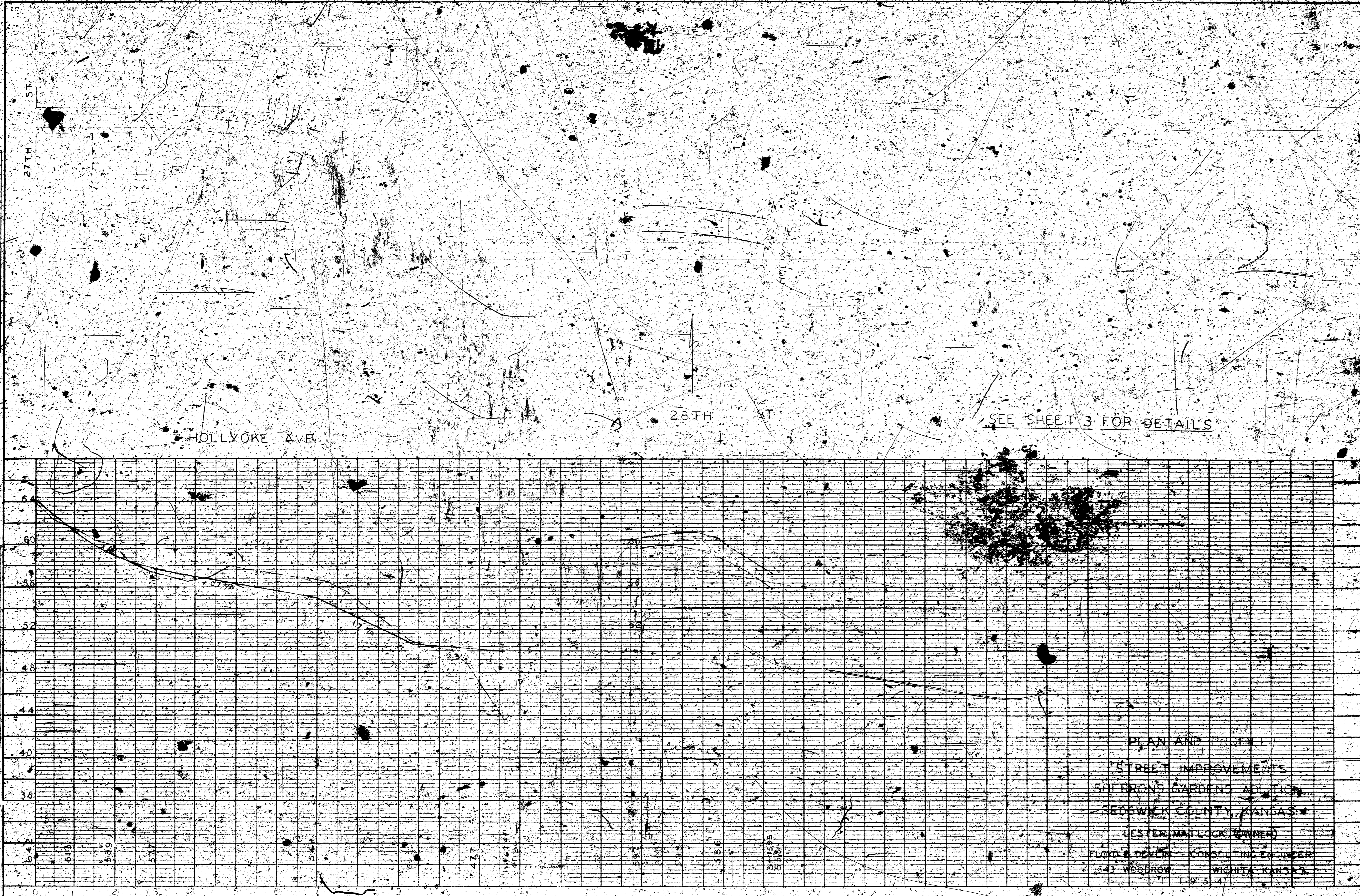
JOYD, R. DE LUCA CONSULTING ENGINEER

9521 W. 13TH  
WICHITA, KANSAS

1955

DATE	
BY	
CHECKED	
APPROVED	
SCALE	
PROJECT	
NO.	

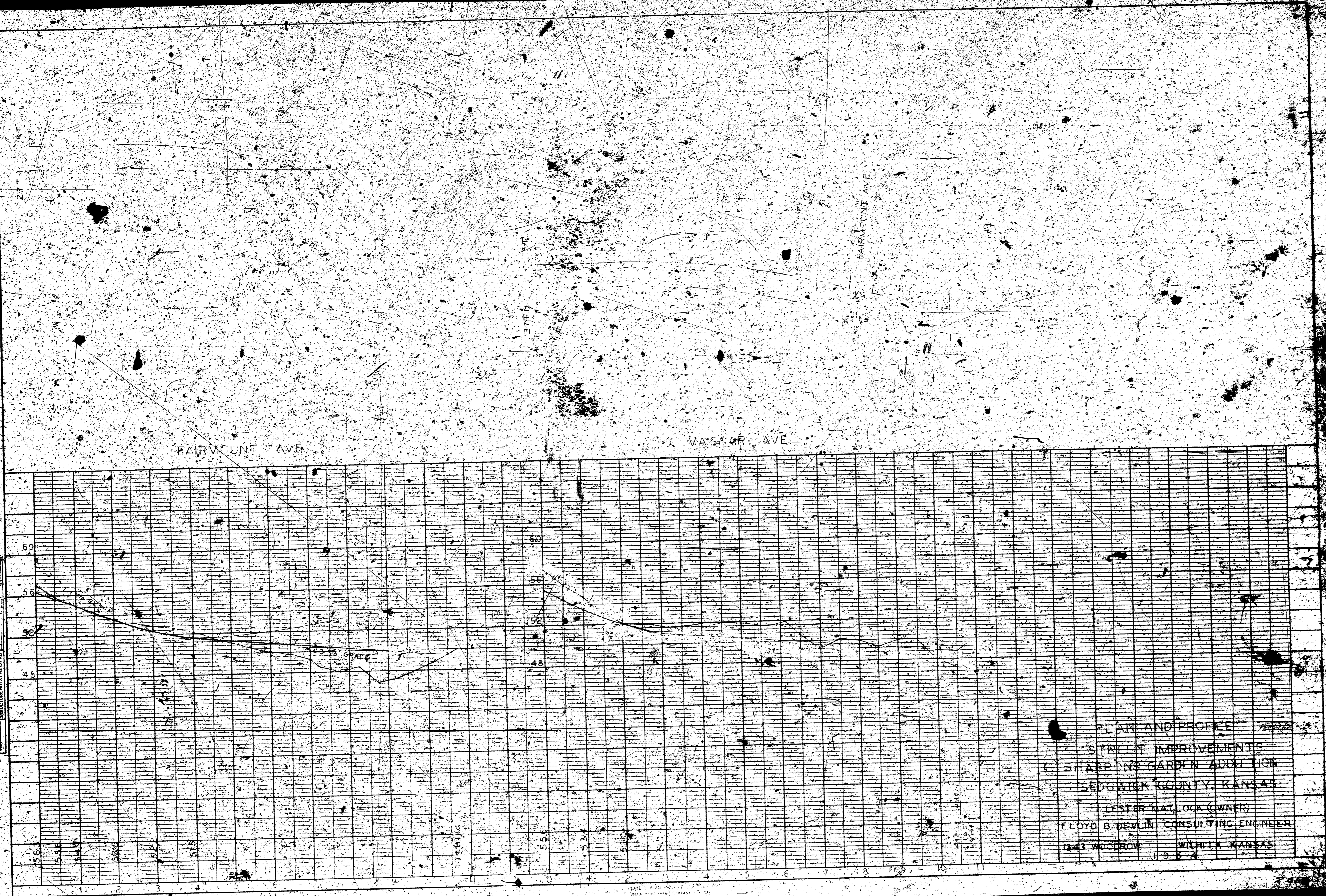
DATE	
BY	
CHECKED	
APPROVED	
SCALE	
PROJECT	
NO.	



PLAN AND PROFILE  
 STREET IMPROVEMENTS  
 SHERBORN GARDENS ADDITION  
 SEDGWICK COUNTY, KANSAS  
 LESTER MAILLOCK (OWNER)  
 FLOYD DEVLIN - CONSULTING ENGINEER  
 343 W. COPLEY WICHITA, KANSAS  
 1954

PLAN  
 SHEET NO. 1  
 PROJECT NO. 1000  
 DATE 10/1/54

DATE  
 10/1/54  
 SCALE  
 1" = 40'



PLAN AND PROFILE  
 STREET IMPROVEMENTS  
 AND GARDEN ADDITION  
 SEDGWICK COUNTY, KANSAS  
 LESTER MALLOCK (OWNER)  
 FLOYD B. DEVLIN CONSULTING ENGINEER  
 1343 WOODROW WICHITA, KANSAS  
 1954

PLAN  
DATE  
SCALE  
PROJECT  
DRAWN BY  
CHECKED BY  
APPROVED BY

PROJECT  
DATE  
SCALE  
PROJECT  
DRAWN BY  
CHECKED BY  
APPROVED BY

