

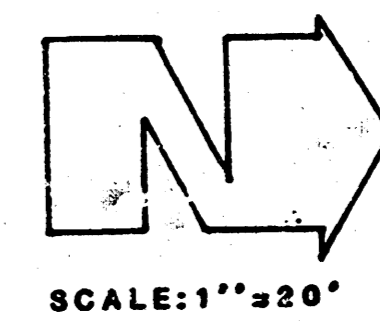
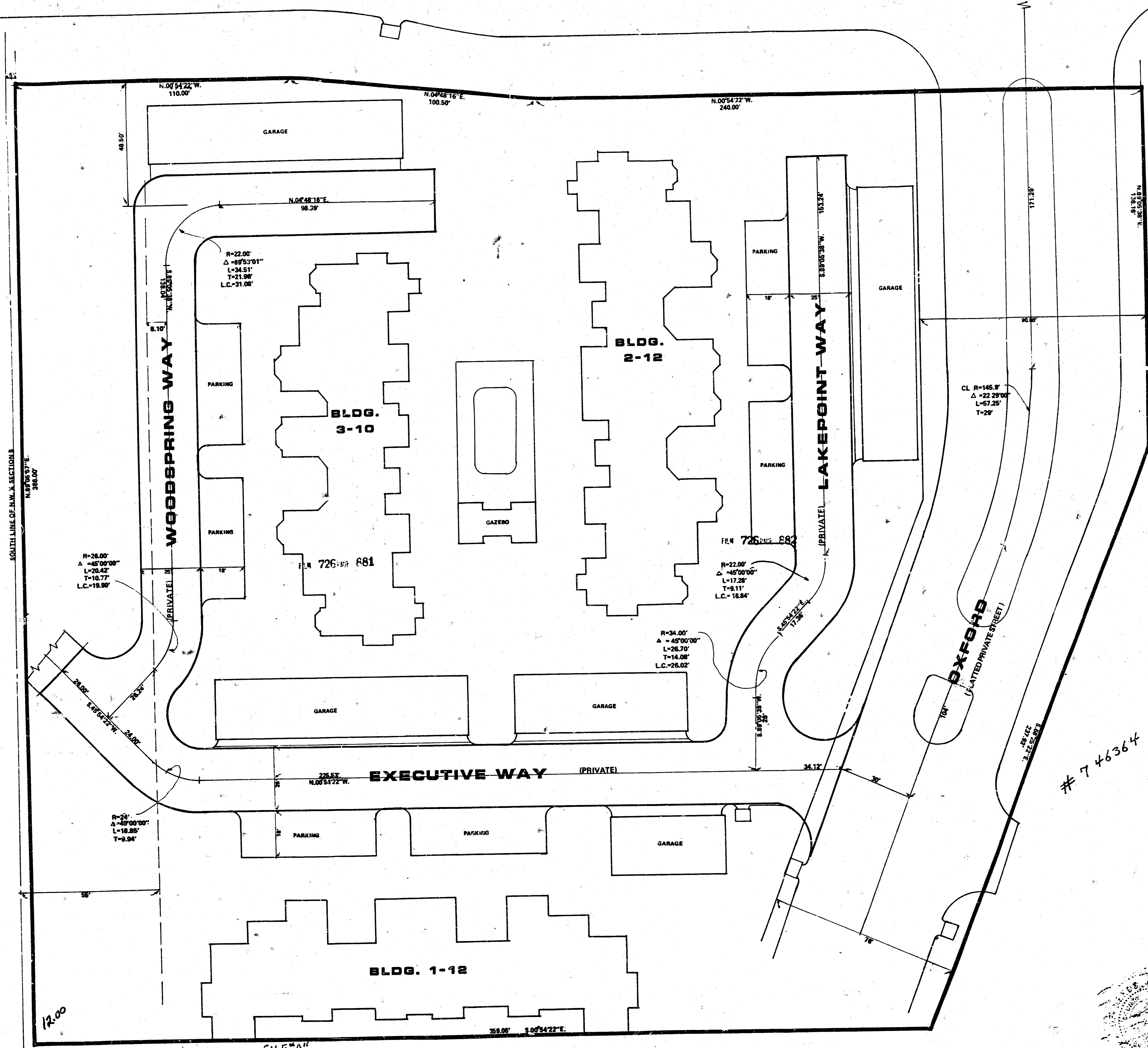
PLAN 726: 877

PLAN 726: 878

PLAN 726: 879

ROCK

ROAD



SCALE: 1"=20'

**PRIVATE STREET SYSTEM
SILVERLEAF ADDITION
TALLGRASS
PART OF LOT 1 BLK. 2
SILVERLEAF ADDITION**

PLAN 726: 883

THESE PRIVATE STREET NAMES APPROVED THIS 16TH
DAY OF MAY, 1985, IN ACCORDANCE WITH
WICHITA ORDINANCE NO. 29-66.

Robert A. Lakin, DIRECTOR OF PLANNING
ROBERT A. LAKIN
WICHITA SEDGWICK COUNTY METROPOLITAN AREA PLANNING
DEPARTMENT.

STATE OF KANSAS, COUNTY OF SEDGWICK, SS:
THIS IS TO CERTIFY THAT THIS INSTRUMENT WAS FILED FOR
RECORD IN THE REGISTER OF DEEDS OFFICE AT 10:20 AM ON THE
17TH DAY OF MAY, 1985.

Pat Kettler, REGISTER OF DEEDS
PAT KETTLER

Ed Reba, DEPUTY
ED REBA

746364



10 10 4 3

FILMED FROM THE BEST AVAILABLE COPY

Bill G. Yung Design
8225 E. 35TH ST. NORTH, WICHITA, KS. 67220 316-843-5567

date 5/15/85 rev.

sheet title PRIVATE STREET SYSTEM

project SILVERLEAF

sheet 1 of 1