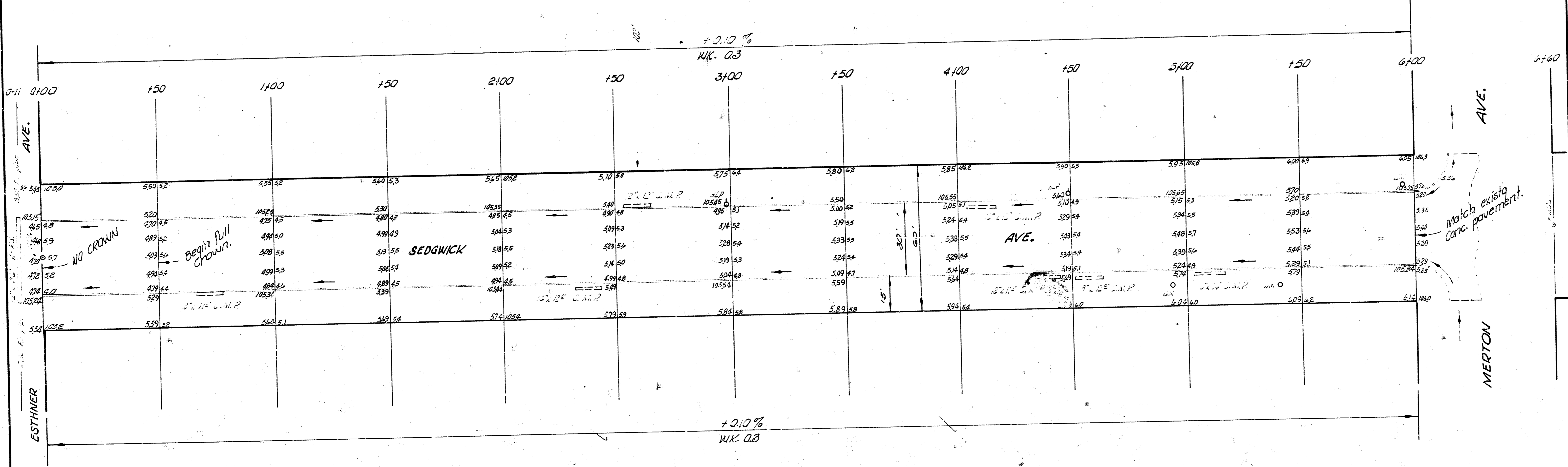


B.M. 2674 Standard NW Harry f Meridian.  
 B.M. 2591 "A" Top of US Sedgwick @ N. Merton.  
 Base Line = & Sedgwick Ave.

Cont. Grades  
 Elev. 125.7

NOTICE TO CONTRACTOR:  
 All entrance pipes are to be  
 disposed of in accordance with  
 instructions of City dirt checker.

SCALE 1"=20'



TIES TO IRON N. ESTHNER & SEDGWICK:  
 63.8' So to W. face No # 1803 West.  
 50.4' W. to E. face No # 1803 So.

**SEDGWICK AVE.**  
 N. ESTHNER TO S. MERTON  
 30' CONC. & CB.  
 CITY OF WICHITA, KANS.  
 B. E. SMITH CITY ENGINEER  
 JULY 1958 PROJ. NO. C18-8

