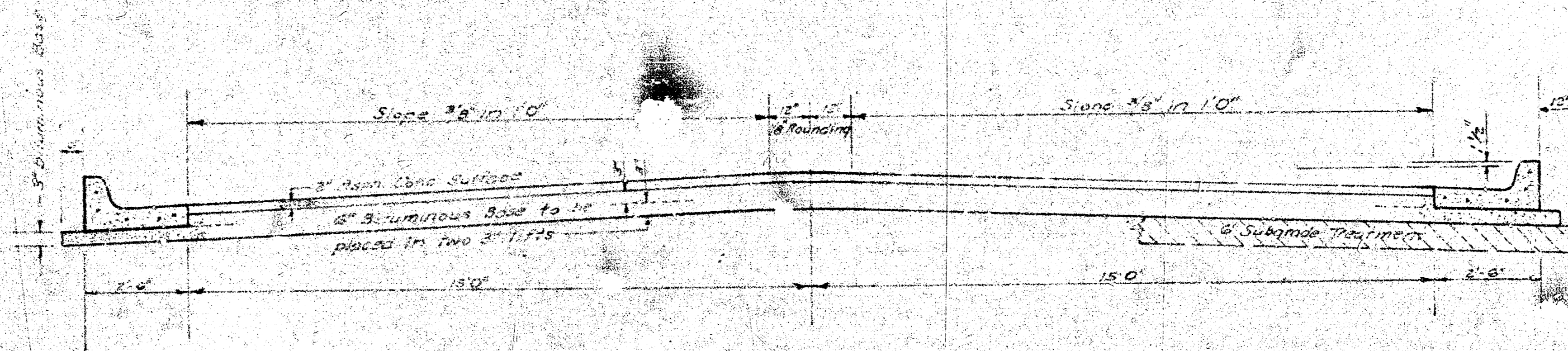


THURMAN STREET
 FROM E.L. LOT 25, BLK. 6, TO E.L. WOOD DRIVE
 WESTLINK VILLAGE 11TH ADDITION

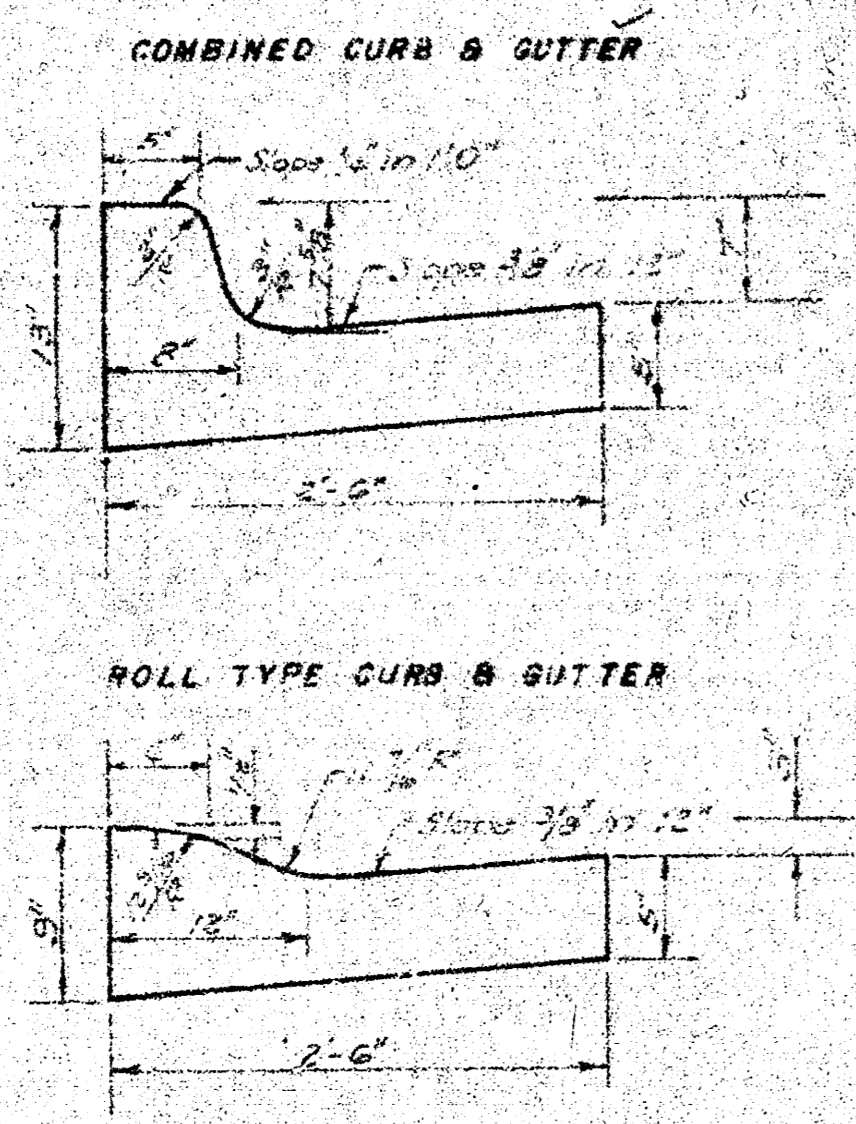


TYPICAL SECTION

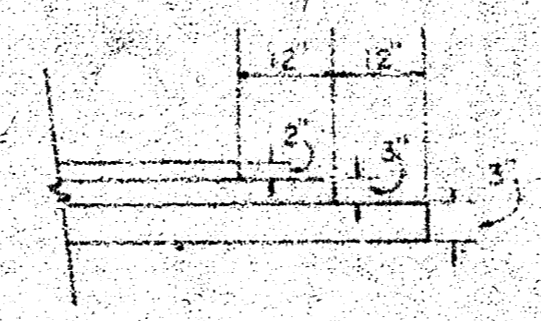
35' ASPHALTIC CONCRETE PAVEMENT WITH BITUMINOUS BASE

The A.C. Pavement between the comb curb & gutter shall be paid as Sq. Yds. 8" A.C. Pavement (6" Bituminous Base).
 The Bituminous Base under the comb curb & gutter shall be paid as Sq. Yds. 3" Bituminous Base.

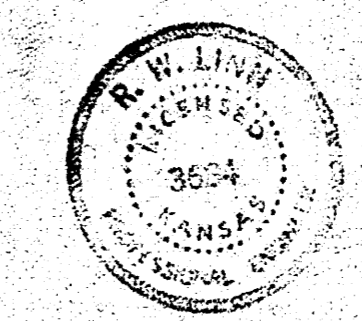
A TACK COAT OF EMULSIFIED ASPHALT (SS-1H) SHALL BE APPLIED AT AN APPROXIMATE RATE 0.05 GALLONS PER SQ YD BETWEEN LIFTS OF ASPHALTIC MATERIALS WHEN ORDERED BY THE ENGINEER. TACK COAT WILL NOT BE PAID FOR DIRECTLY AND SHALL BE CONSIDERED AS SUBSIDIARY TO PRICE BID FOR ASPHALTIC PAVEMENT.
 BITUMINOUS BASE AND ASPHALTIC CONCRETE WEARING SURFACE SHALL BE PLACED WITH A LAYDOWN MACHINE HAVING AUTOMATIC ELECTRONIC CONTROLS FOR CROWN AND GRADE. CONSTRUCTION JOINTS IN EACH LIFT SHALL BE STAGGERED A MINIMAL DISTANCE OF 1' WITH JOINTS IN PRECEDING LIFTS AND PLACED SUCH THAT A JOINT WILL BE CONSTRUCTED ON THE CENTERLINE IN THE TOP LIFT.



DETAIL OF TRANSVERSE CONSTRUCTION JOINTS

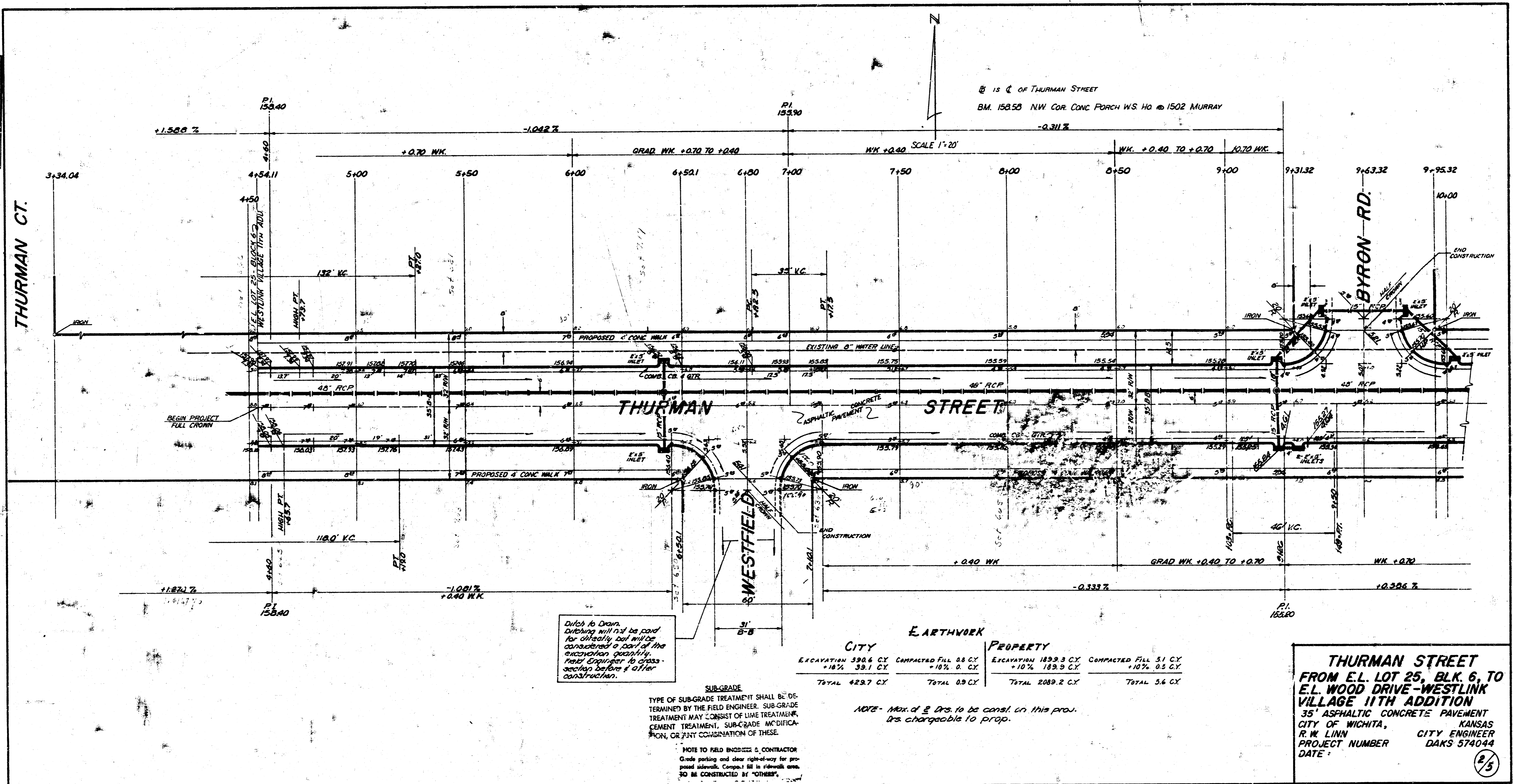


TRANSVERSE CONSTRUCTION JOINTS SHALL BE CONSTRUCTED IN FLEXIBLE BASE PAVEMENTS AT LOCATIONS WHERE PAVEMENT TEMPORARILY ENDS TO FACILITATE FUTURE PAVEMENT CONSTRUCTION AS SHOWN BY DETAIL. THE COST OF CONSTRUCTING THE TRANSVERSE CONSTRUCTION JOINTS SHALL NOT BE MEASURED OR PAID FOR DIRECTLY BUT SHALL BE INCLUDED IN THE BID PRICE FOR SQUARE YARDS OF ASPHALTIC CONCRETE PAVEMENT.



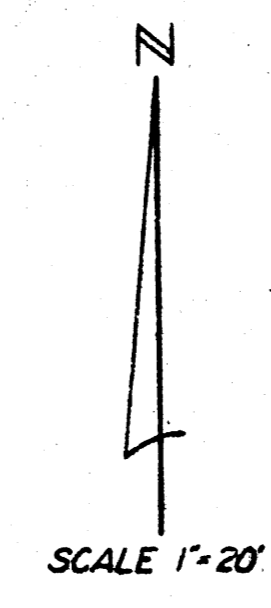
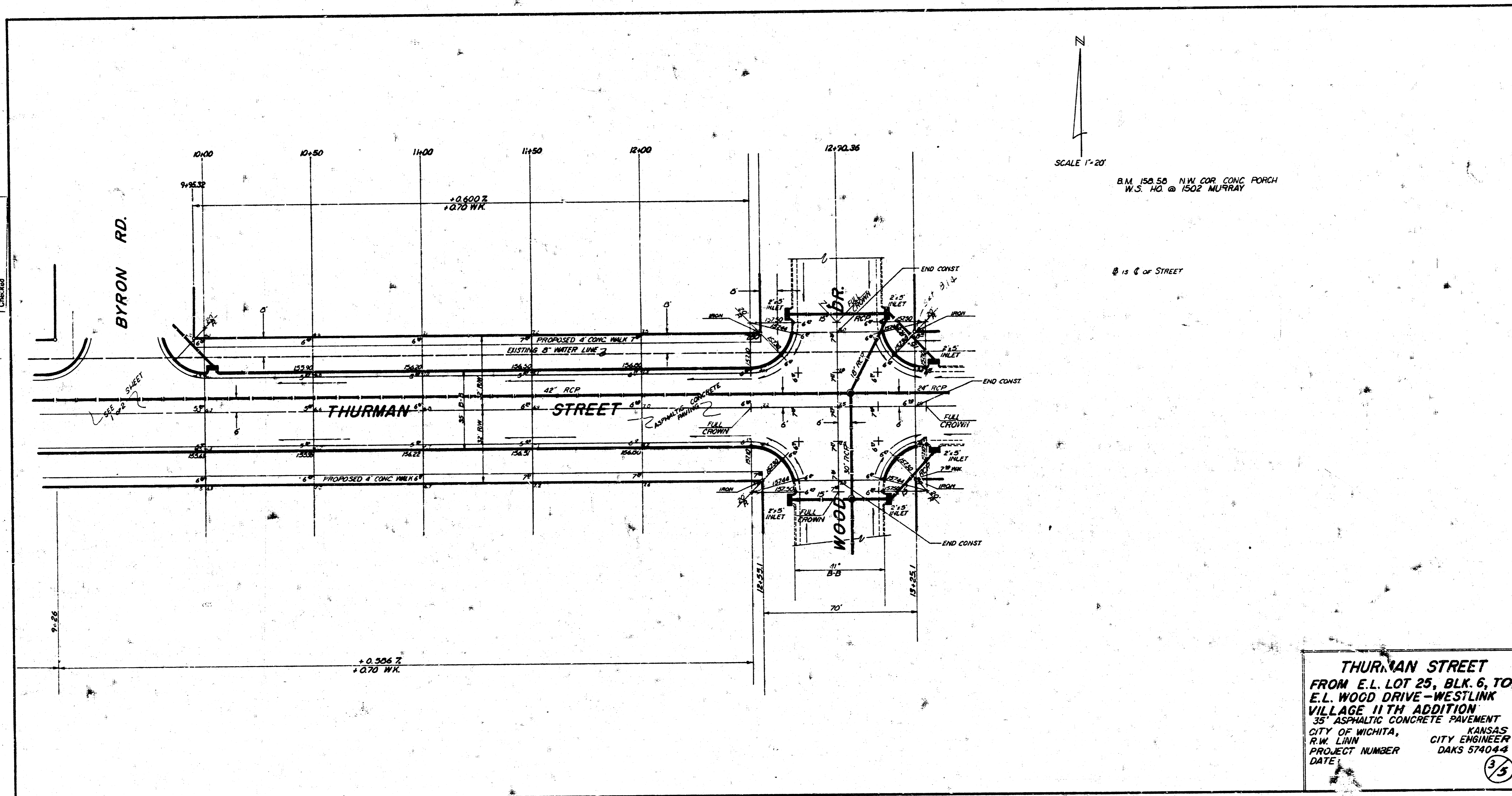
CITY OF WICHITA KANSAS
 DEPARTMENT of PUBLIC WORKS - Engineering
 Division
 R. W. LINN CITY ENGINEER
 DATE _____ Proj. No. DAKS 579044

SUNNY D&S
 Plan or
 Checked



2/3

Checked
By
Plan
Date



B.M. 158.58 N.W. COR. CONC. PORCH
W.S. HD. @ 1502 MURRAY

± 15' C of STREET