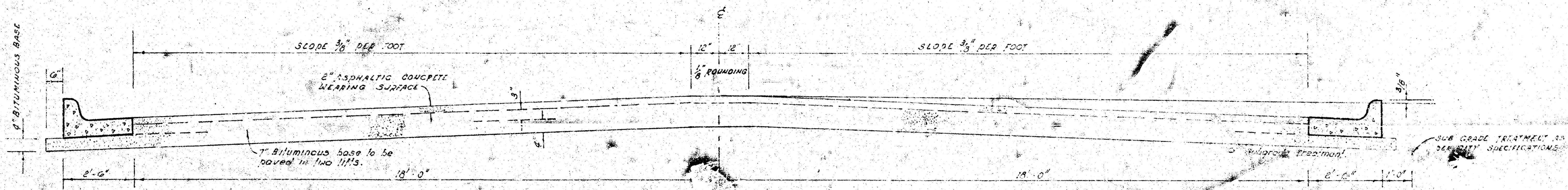


WOOD DRIVE
N. L. 17th to the W.L. WESTFIELD
Proj. No. DAKC574040



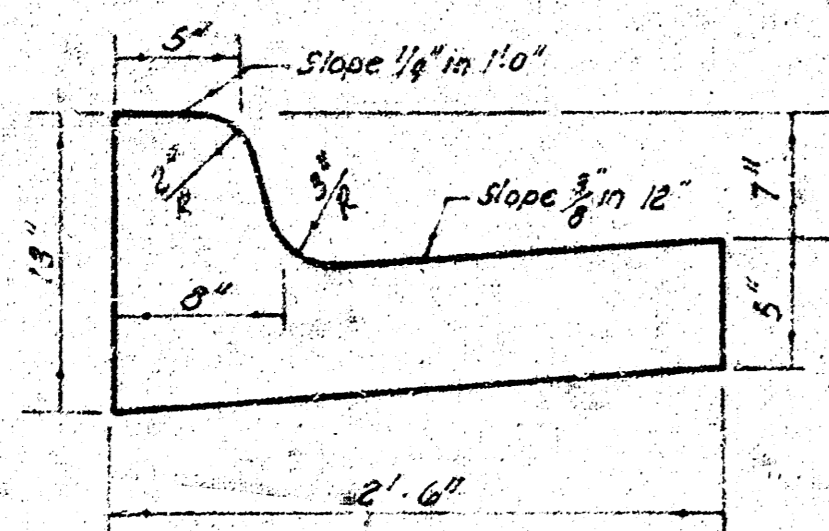
TYPICAL SECTION

4' ASPHALTIC CONCRETE PAVEMENT WITH BITUMINOUS BASE

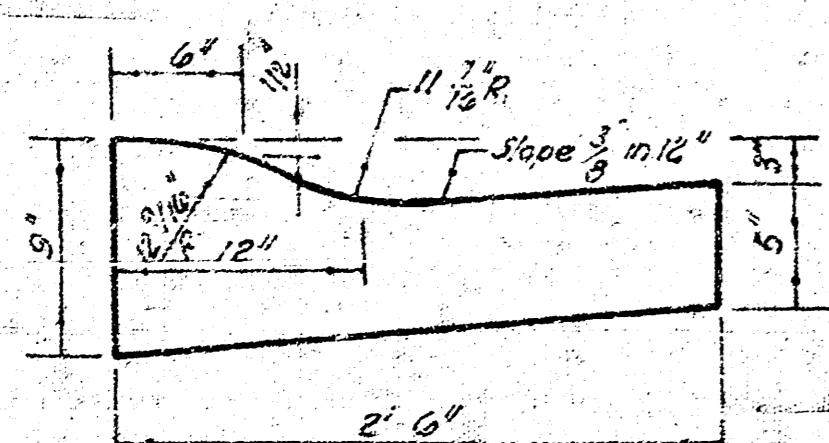
A TACK COAT OF EMULSIFIED ASPHALT (SS-1H) SHALL BE APPLIED AT AN APPROXIMATE RATE 0.05 GALLONS PER SQ YD BETWEEN LIFTS OF ASPHALTIC MATERIALS WHEN ORDERED BY THE ENGINEER. TACK COAT WILL NOT BE PAID FOR DIRECTLY AND SHALL BE CONSIDERED AS SUBSIDIARY TO PRICE BID FOR ASPHALTIC PAVEMENT. BITUMINOUS BASE AND ASPHALTIC CONCRETE WEARING SURFACE SHALL BE PLACED WITH A LAYDOWN MACHINE HAVING AUTOMATIC ELECTRONIC CONTROLS FOR BROWN AND GRADE. CONSTRUCTION JOINTS IN EACH LIFT SHALL BE STAGGERED A MINIMUM DISTANCE OF 1' WITH JOINTS IN PRECEDING LIFTS AND SUCH THAT A JOINT WILL BE CONSTRUCTED ON THE PAVEMENT CENTERLINE IN THE TOP LIFT.

The A.C. pavement between the curb curbs & gutter shall be paid as 30 yds of A.C. pavement (2" Bituminous base). The Bituminous base under the curb curbs & gutter shall be paid as 50 yds of Bituminous base.

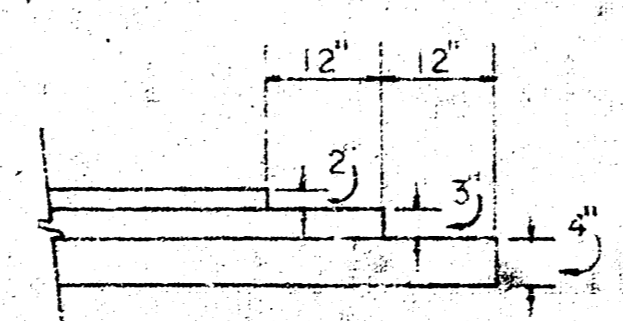
COMBINED CURB & GUTTER



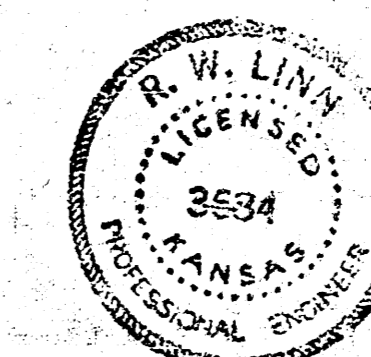
ROLL TYPE CURB & GUTTER



DETAIL OF TRANSVERSE CONSTRUCTION JOINTS



TRANSVERSE CONSTRUCTION JOINTS SHALL BE CONSTRUCTED IN FLEXIBLE BASE PAVEMENTS AT LOCATIONS WHERE PAVEMENT TEMPORARILY ENDS TO FACILITATE FUTURE PAVEMENT CONSTRUCTION AS SHOWN BY DETAIL. THE COST OF CONSTRUCTING THE TRANSVERSE CONSTRUCTION JOINTS SHALL NOT BE MEASURED OR PAID FOR DIRECTLY BUT SHALL BE INCLUDED IN THE BID PRICE FOR SQUARE YARDS OF ASPHALTIC CONCRETE PAVEMENT.



CITY OF WICHITA, KANSAS
 DEPARTMENT of PUBLIC WORKS - Engineer
 Division
 R. W. LINN CITY ENGINEER
 DATE _____ Proj. No. DAKC5

1/5

FILMED FROM THE BEST AVAILABLE COPY.....

B.M. = 158.65 "□" Cut Top E. Curb Wood @ S.L. 17th St.
 ☐ is ☐ Wood Drive

Δ = 35°02'R = 625.00'T = 201.23' L = 389.75' L.C. = 383.66'

CURVE DATA BASED ON ☐ RAD. 17°35'01"

STA.	ARC.	CHORD LENGTH		DEFLECTION	TOTAL DEFLECTION
		OFF/ACR.	OFF/ACR.		
0+98.12				0°00'00"	0°00'00"
1+25	26.88'	23.69'	28.06'	1°12'44"	1°12'44"
1+50	25.00'	23.90'	26.10'	1°07'40"	2°20'24"
1+75	"	"	"	1°07'40"	3°28'04"
2+00	"	"	"	1°07'41"	4°35'47"
2+25	"	"	"	1°07'40"	5°43'27"
2+50	"	"	"	1°07'40"	6°51'07"
2+75	"	"	"	1°07'41"	7°58'48"
3+00	"	"	"	1°07'40"	9°06'28"
3+25	"	"	"	1°07'40"	10°14'09"
3+50	"	"	"	1°07'41"	11°21'49"
3+75	"	"	"	1°07'40"	12°29'29"
4+00	25.00'	23.90'	26.10'	1°07'40"	13°37'09"
4+14.55 P	14.55'	13.91'	15.19'	0°39'23"	14°16'32"
4+22.52	7.97'	7.62'	8.32'	0°21'35"	14°38'07"
4+34.79	12.27'	11.73'	12.81'	0°39'13"	15°11'20"
4+54.03	19.24'	18.34'	20.04'	0°52'04"	16°03'24"
4+78.87	33.84'	32.34'	35.33'	1°31'37"	17°35'01"

Defl./ft = 2.7048872 Min.

SUB-GRADE
 TYPE OF SUB-GRADE TREATMENT SHALL BE DETERMINED BY THE FIELD ENGINEER. SUB-GRADE TREATMENT MAY CONSIST OF LIME TREATMENT, CEMENT TREATMENT, SUB-GRADE MODIFICATION, OR ANY COMBINATION OF THESE.

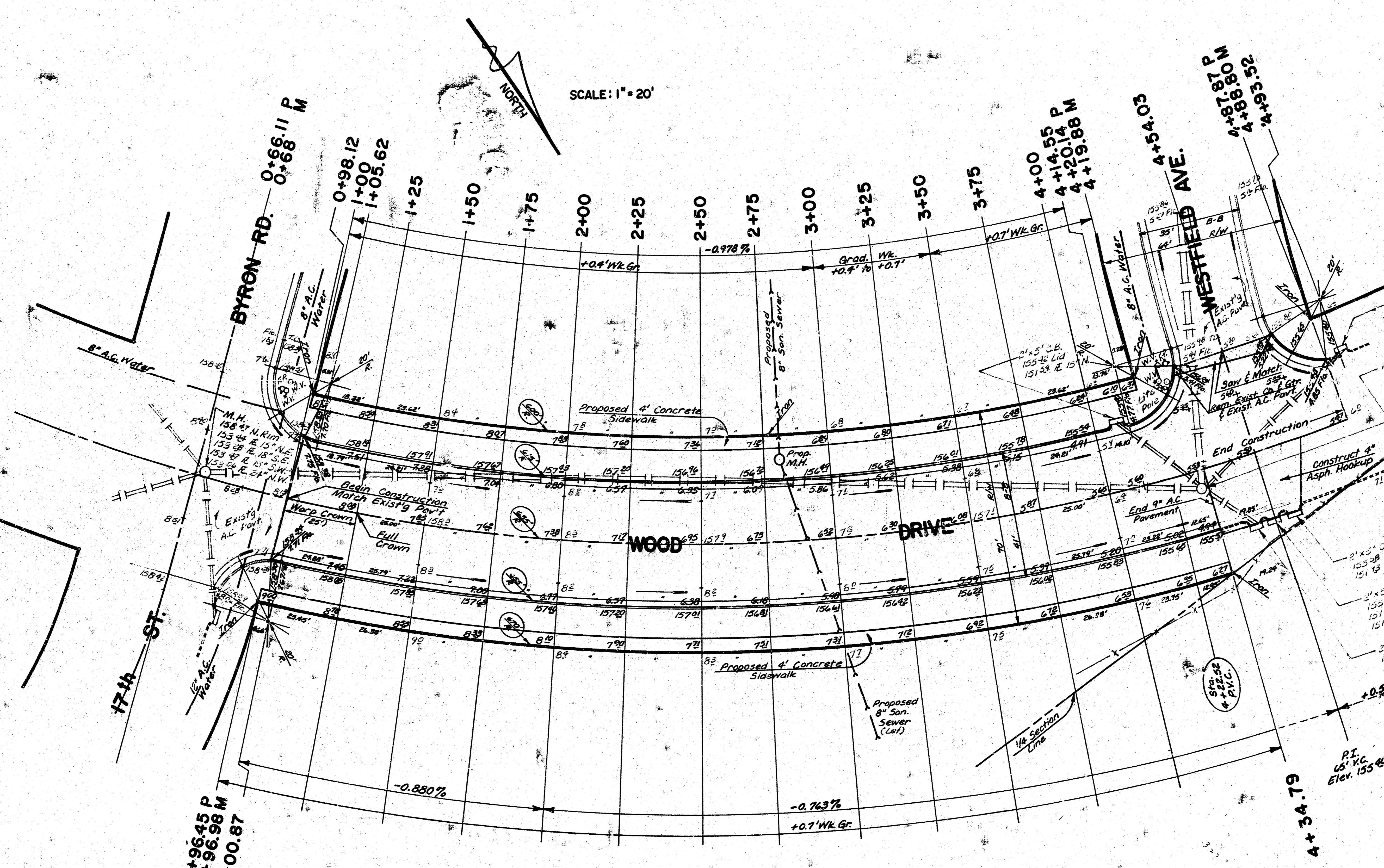
NOTE TO FIELD ENGINEER & CONTRACTOR
 Provide parking and clear right-of-way for proposed sidewalk. Compact fill in sidewalk area TO BE CONSTRUCTED BY "OTHERS".

Survey Krug
 Eric Menny
 Ed. Menny
 Checked

EARTHWORK:		
	Property	City
Excavation	925.4 C.Y.	219.2 C.Y.
+10%	925.4 C.Y.	219.2 C.Y.
Total	1017.4 C.Y.	241.1 C.Y.
Manipulation = 1805 S.Y.		

NOTE: Contractor to Contact K.G. & E. and Southwestern Bell Telephone Co. for Locations of Underground Utilities.

☐ = Removal



SCALE: 1" = 20'

338.34 319.63
 320.14 302.34

WOOD DRIVE
 N.L. 17th to the W.L. WESTFIELD
 41' B-B 9" A.C. Pavt w/ Comb. C.&G.
CITY OF WICHITA, KANSAS
 R.W. Linn — City Engineer
 Proj. No. DAKC574040
 Date _____