

S. J. Slavin
 L. J. Chomay
 Licensed
 City of Eastbrough

Note: Remove existing 24" R.C.P. Sand fill & flush backfill

Sta. 0100
 Outfall
 Note: Culvert
 extension - See
 detail, sheet #4

Sta. 0155
 Const. Brk. M.H.

Note: Mechanically compact backfill bet. 0100 & 0155

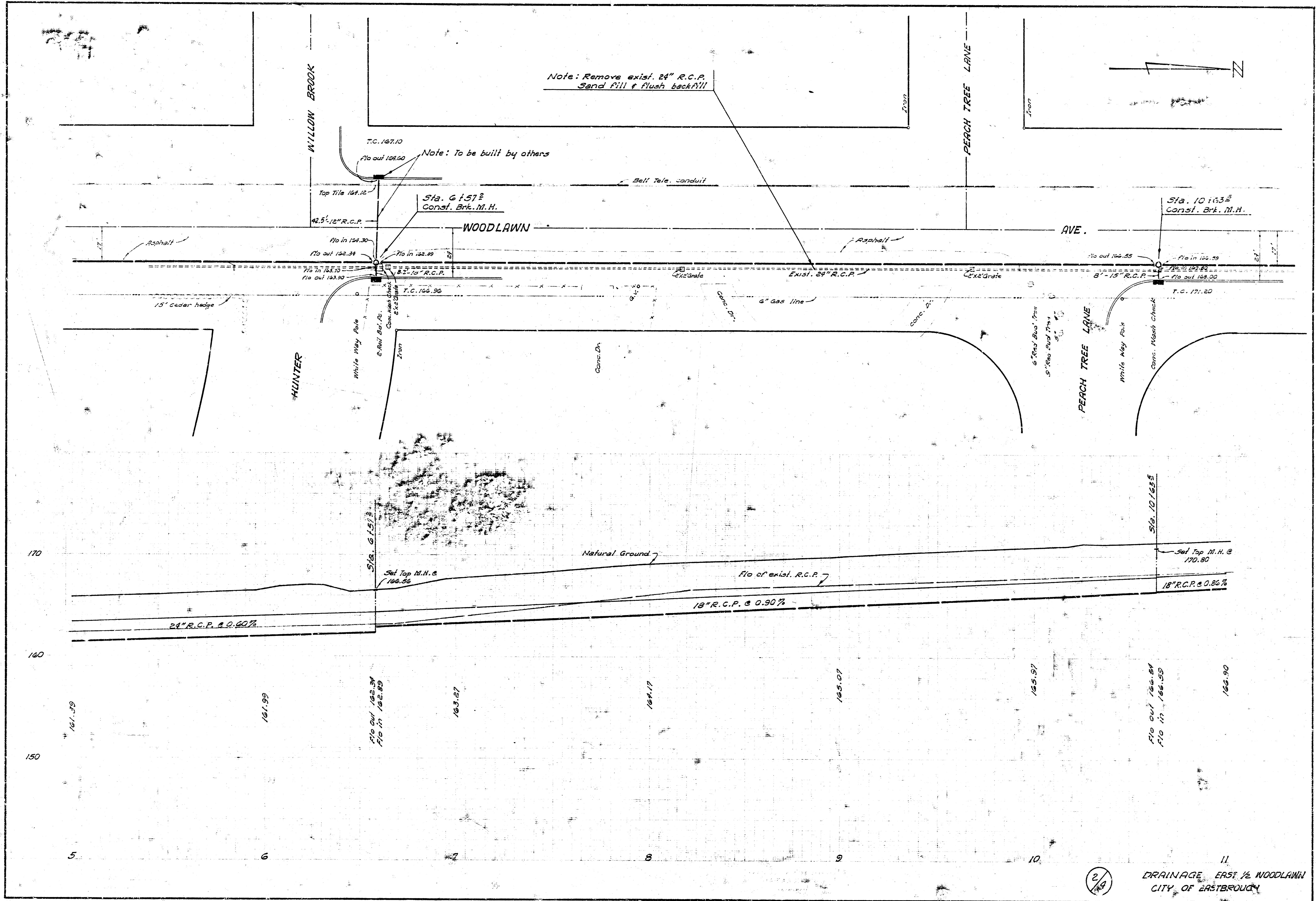
B.M. 163.12 "X" on N.W. corner N. Headwall Culvert 75' E. of & Windsor & Kellogg

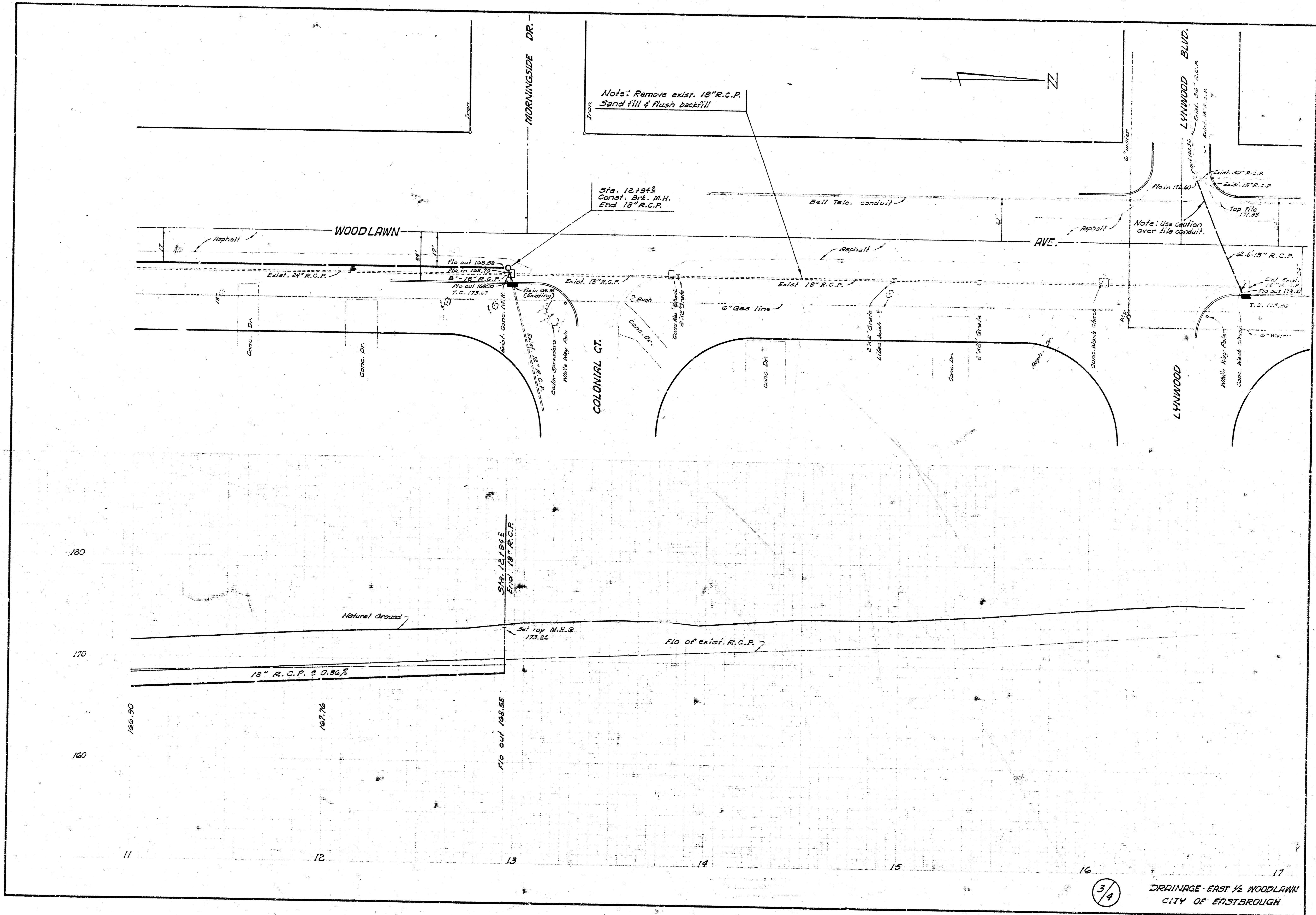
Sta. 4134
 Const. Brk. M.H.

Plan Scale 1"=20'
 Profile Scale 1"=20' Hor.
 1"=4' Vert.

5 As built 6-13-64
 DRAINAGE
 IN CONNECTION WITH PAVING
 OF EAST 1/2 OF WOODLAWN
 FROM N.L. KELLOGG TO S.L. DOUGLAS
 CITY OF EASTBROUGH
 DATE: OCT. 1965

1/4





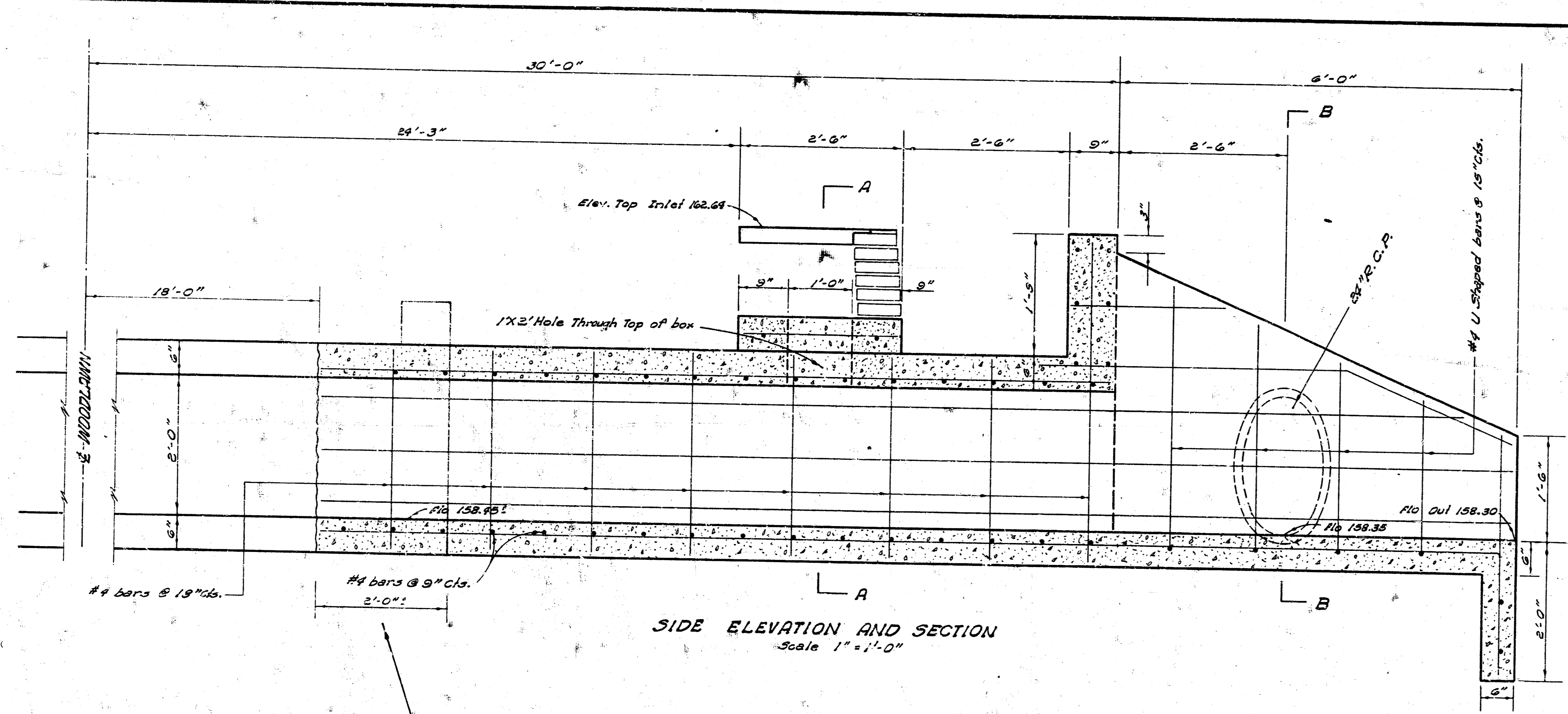
Notes: Remove exist. 18" R.C.P.
Sand fill & flush backfill!

Sta. 12194±
Const. Brk. M.H.
End 18" R.C.P.

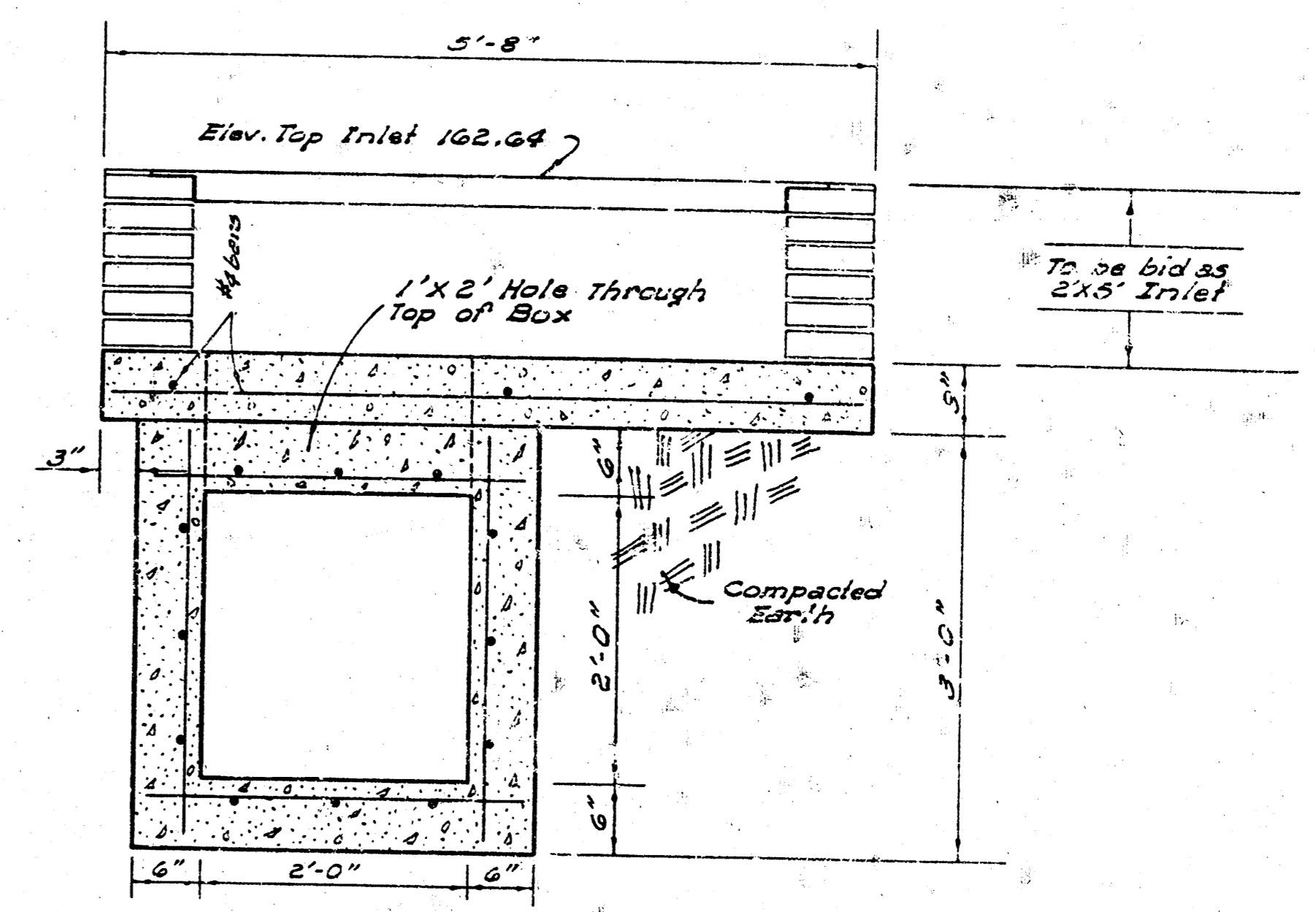
Note: Use caution
over file conduit.

3/4

DRAINAGE - EAST 1/2 WOODLAWN
CITY OF EASTBROUGH

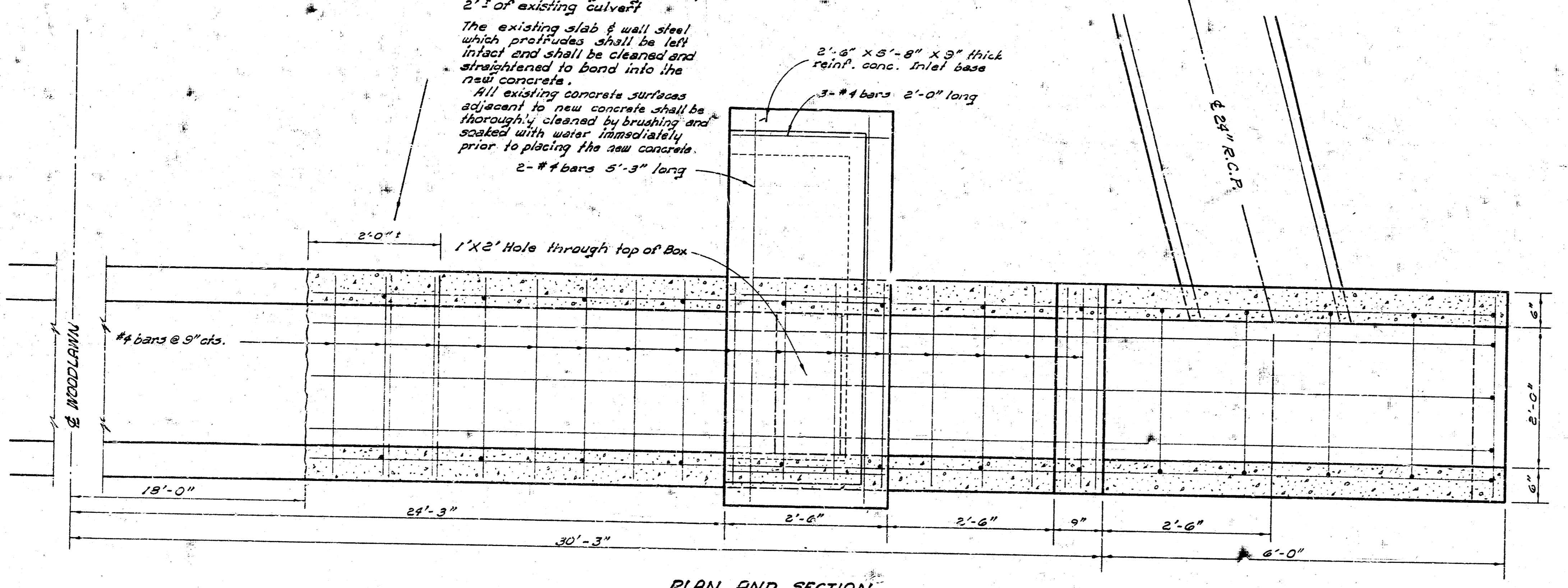


SIDE ELEVATION AND SECTION
Scale 1"=1'-0"



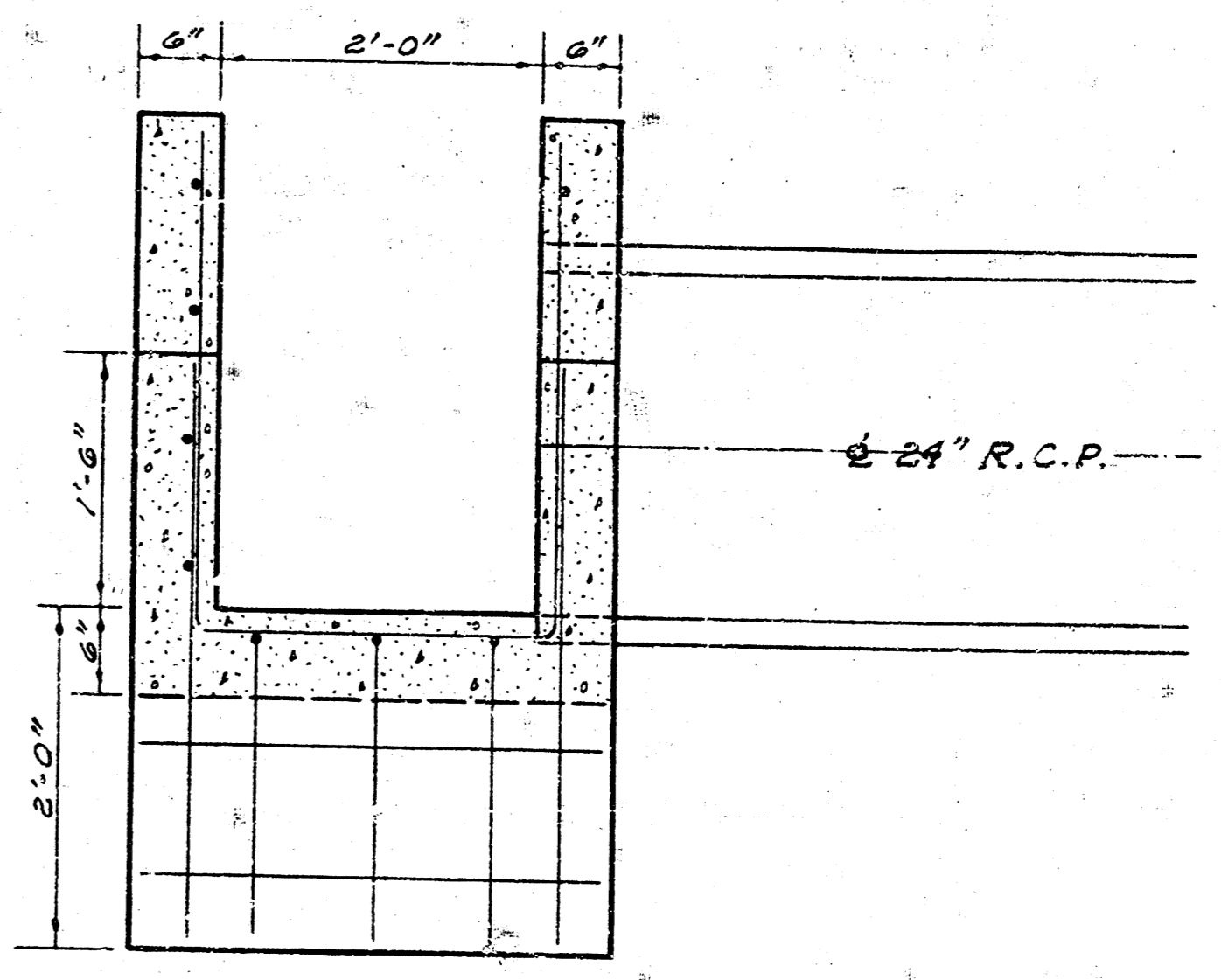
A - A
SECTION THRU BOX AND INLET
Scale 1"=1'-0"

Note: Remove existing wing walls & 2'-1" of existing culvert.
The existing slab & wall steel which protrudes shall be left in place and shall be cleaned and straightened to bond into the new concrete.
All existing concrete surfaces adjacent to new concrete shall be thoroughly cleaned by brushing and soaked with water immediately prior to placing the new concrete.
2-#4 bars 5'-3" long



PLAN AND SECTION
Scale 1"=1'-0"

NOTE TO CONTRACTOR
All work is to be done according to the specifications of the City of Wichita.
Pipe removed is to be disposed of as directed by the Engineer.
The removal of existing wing walls and 2'-1" of existing culvert shall be considered subsidiary to the bid item "culvert extension"



SECTION B - B
Scale 1"=1'-0"

SUMMARY OF QUANTITIES	
3.40	cu. yds. 6 sack paving mix
285	lbs. reinforcing steel

4/A
DRAINAGE E. 1/2 WOODLAWN
CULVERT & INLET DETAIL SHEET
CITY OF EASTBROUGH

WOODLAWN BOULEVARD

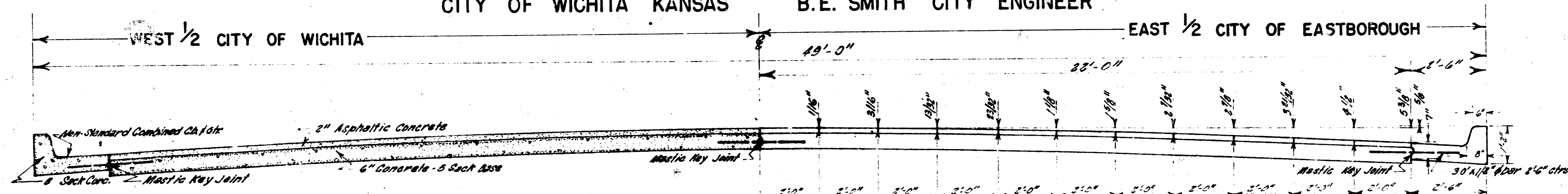
FROM N.L. KELLOGG TO S.L. DOUGLAS

PROJECT NO. C15-61

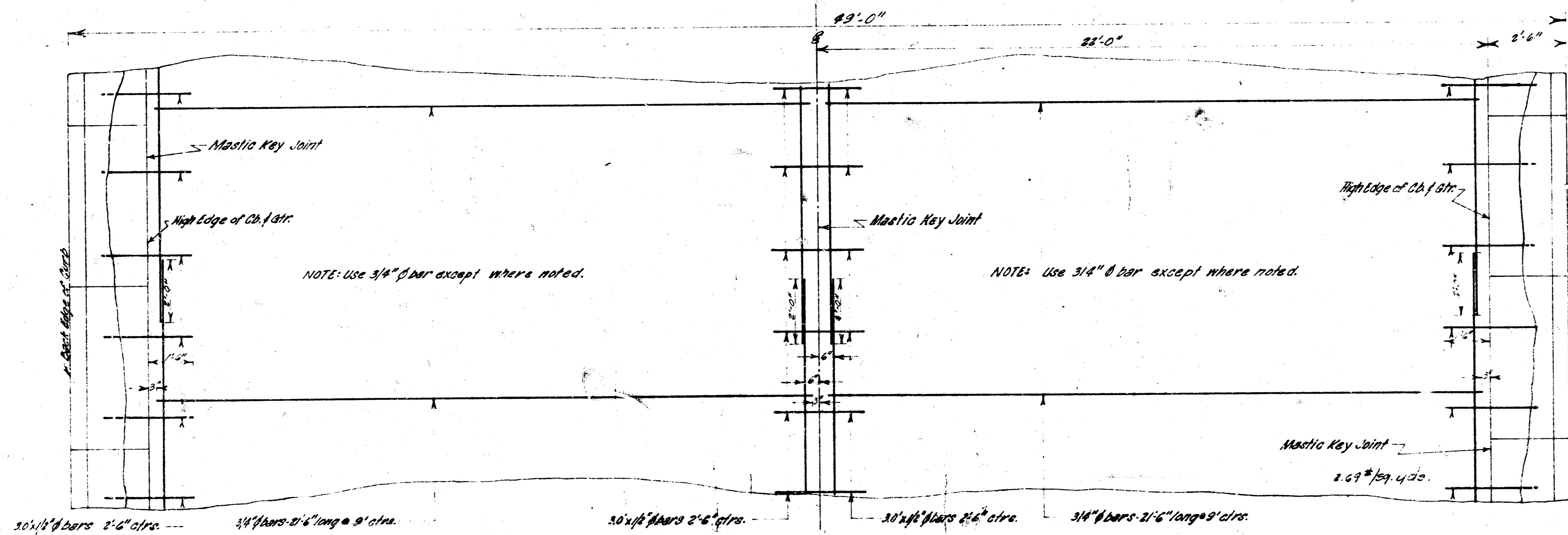
CITY OF WICHITA KANSAS

B.E. SMITH CITY ENGINEER

EAST 1/2 CITY OF EASTBOROUGH



TYPICAL SECTION
Scale: 1" = 2'-0"



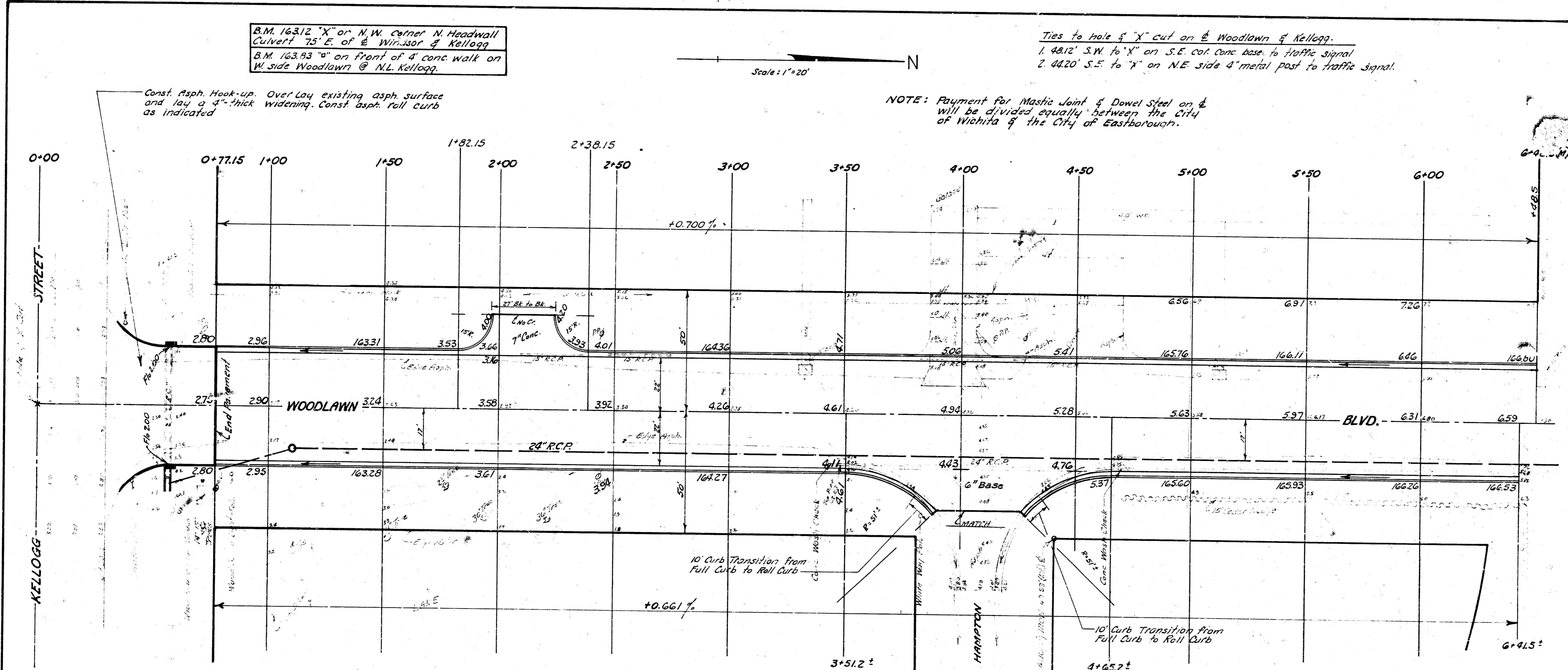
STEEL PATTERN
Scale: 1" = 2'-0"

B.M. 16312 "X" on N.W. corner N. Headwall
 Culvert 75' E. of E. Windsor & Kellogg
 B.M. 16393 "O" on front of 4' conc walk on
 W. side Woodlawn @ N.L. Kellogg.

Ties to hole of "X" cut on @ Woodlawn & Kellogg.
 1. 48.12' S.W. to "X" on S.E. cor. Conc. base to traffic signal
 2. 44.20' S.E. to "X" on N.E. side 4' metal post to traffic signal.

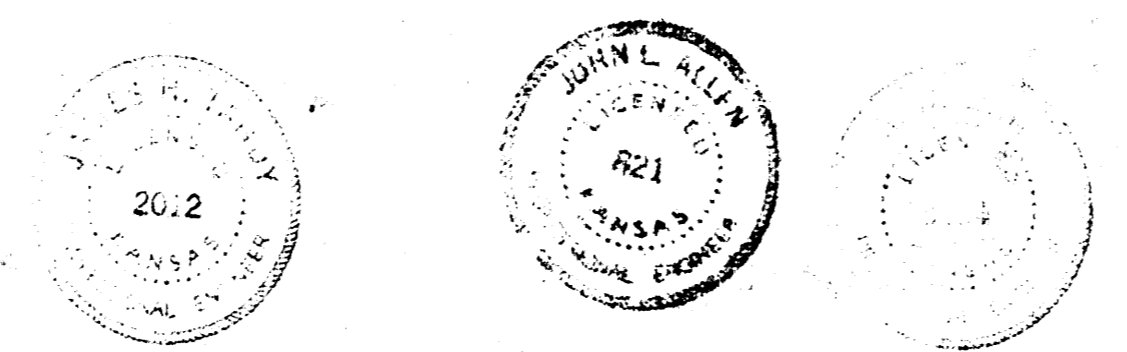
Scale: 1"=20'

NOTE: Payment for Mastic Joint & Dowel Steel on E
 will be divided equally between the City
 of Wichita & the City of Eastborough.



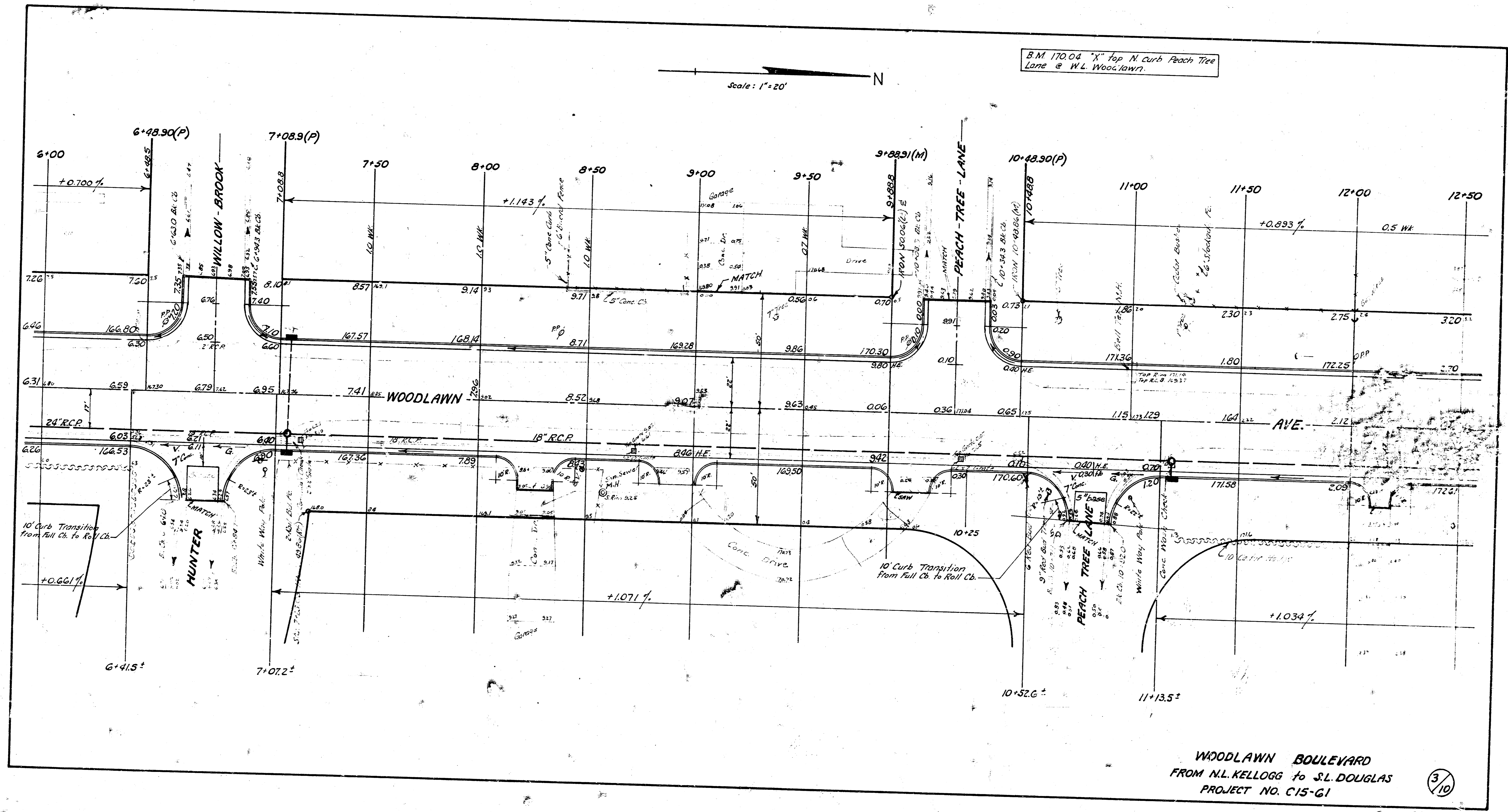
PROJECT C15-61		EASTBOROUGH	
EXCAVATION	COMP. FILL	EXCAVATION	COMP. FILL
2821 Cu Yds	63 Cu Yds	2743 Cu Yds	65 Cu Yds
+10 ft 282	6	274	6
Totals 3103 Cu Yds	69 Cu Yds	3017 Cu Yds	71 Cu Yds

NOTE: Excavation Quantities shown exclude 2" for existing asphalt m.r.



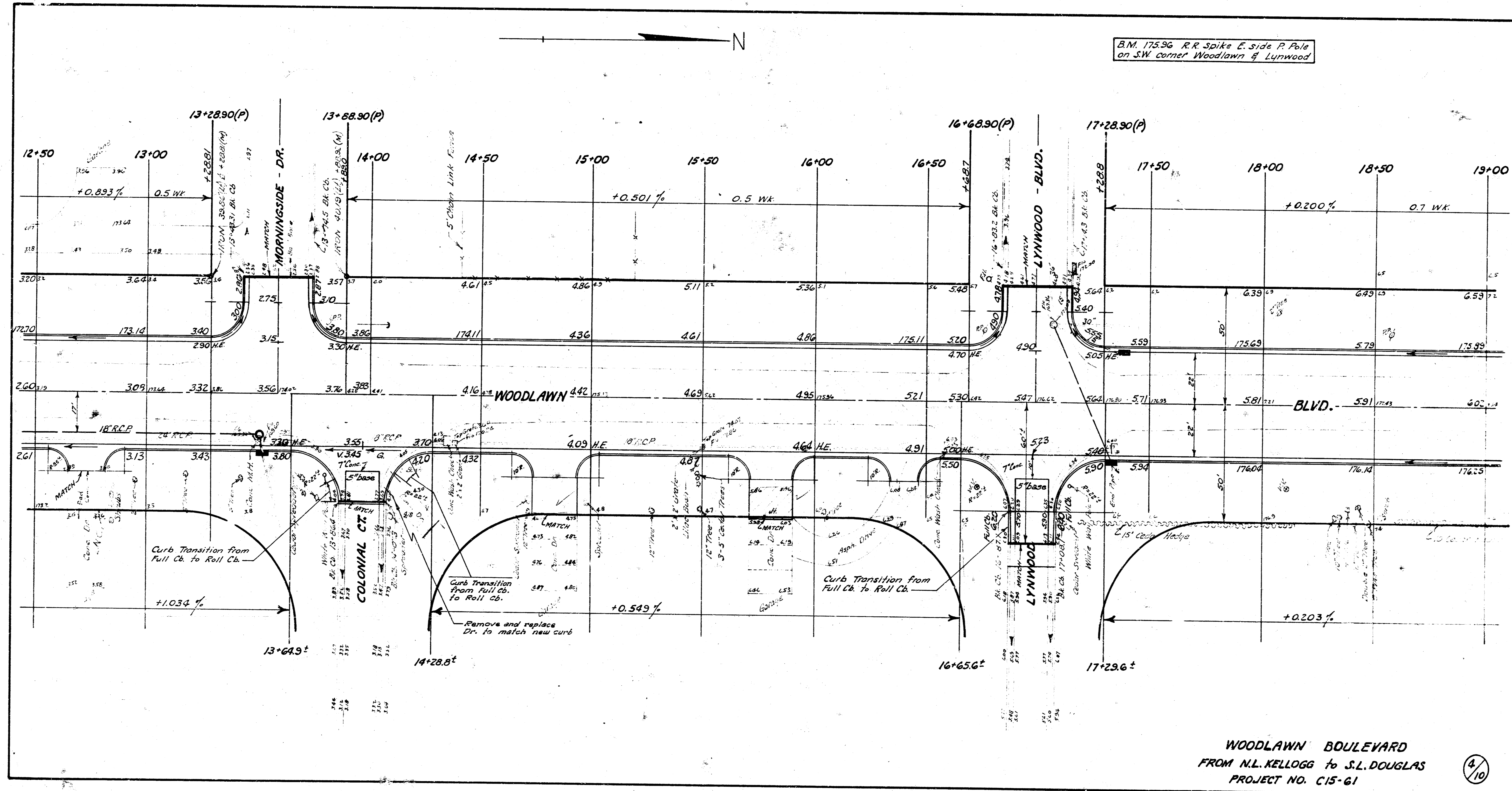
W. 1/2 WOODLAWN BLVD.
 FROM N.L. KELLOGG STREET
 TO S.L. DOUGLAS AVE.
 22'-2'-24" Asph. Conc. W. 1/2
 B.E. SMITH CITY ENGINEER
 CITY OF WICHITA, KANSAS
 Date: Oct. 1965
 Project No. C15-61

2/10



WOODLAWN BOULEVARD
 FROM N.L. KELLOGG TO S.L. DOUGLAS
 PROJECT NO. C15-G1

3/10

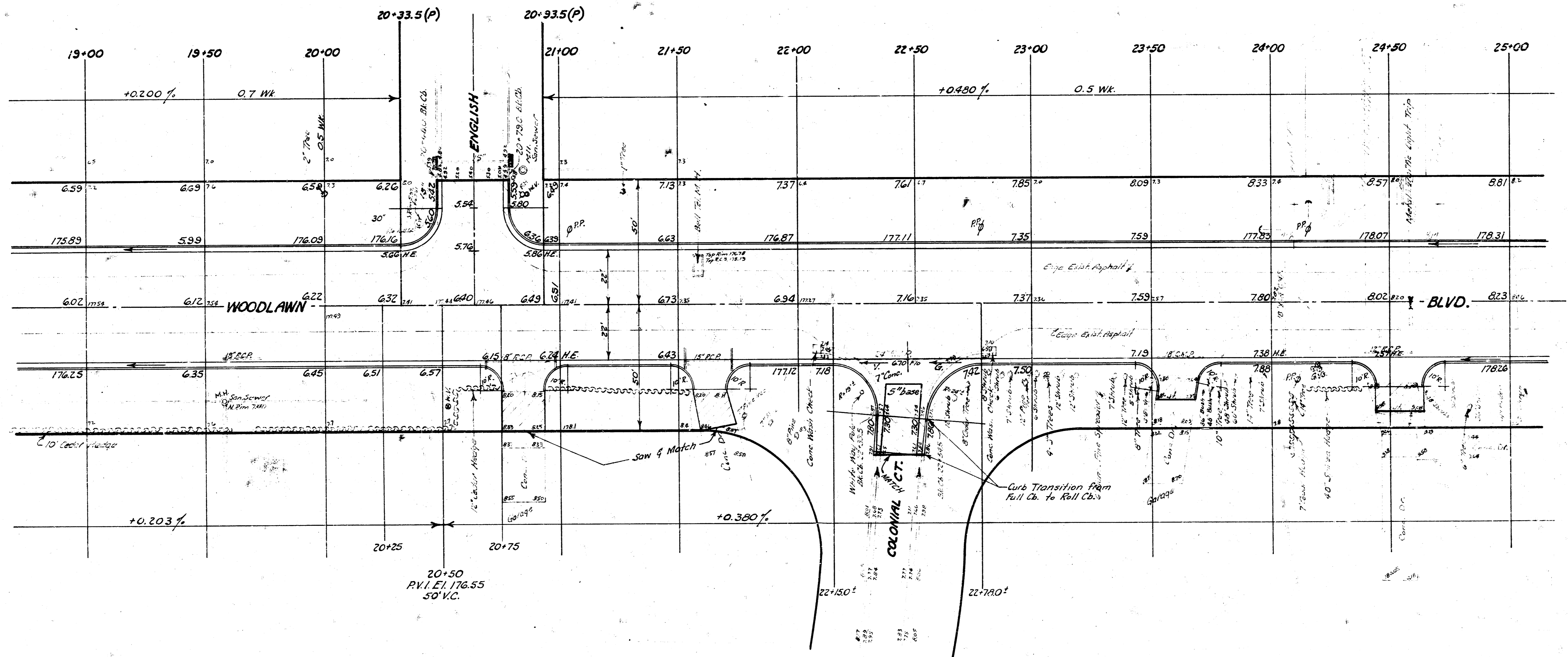
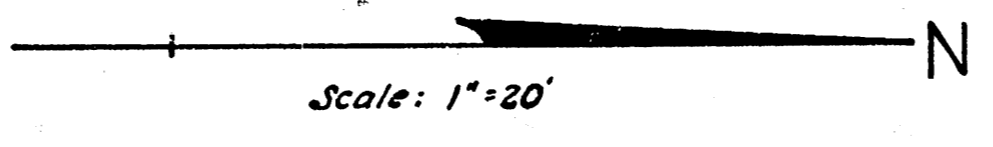


B.M. 175.96 R.R. Spike E. side P. Pole
on SW corner Woodlawn & Lynwood

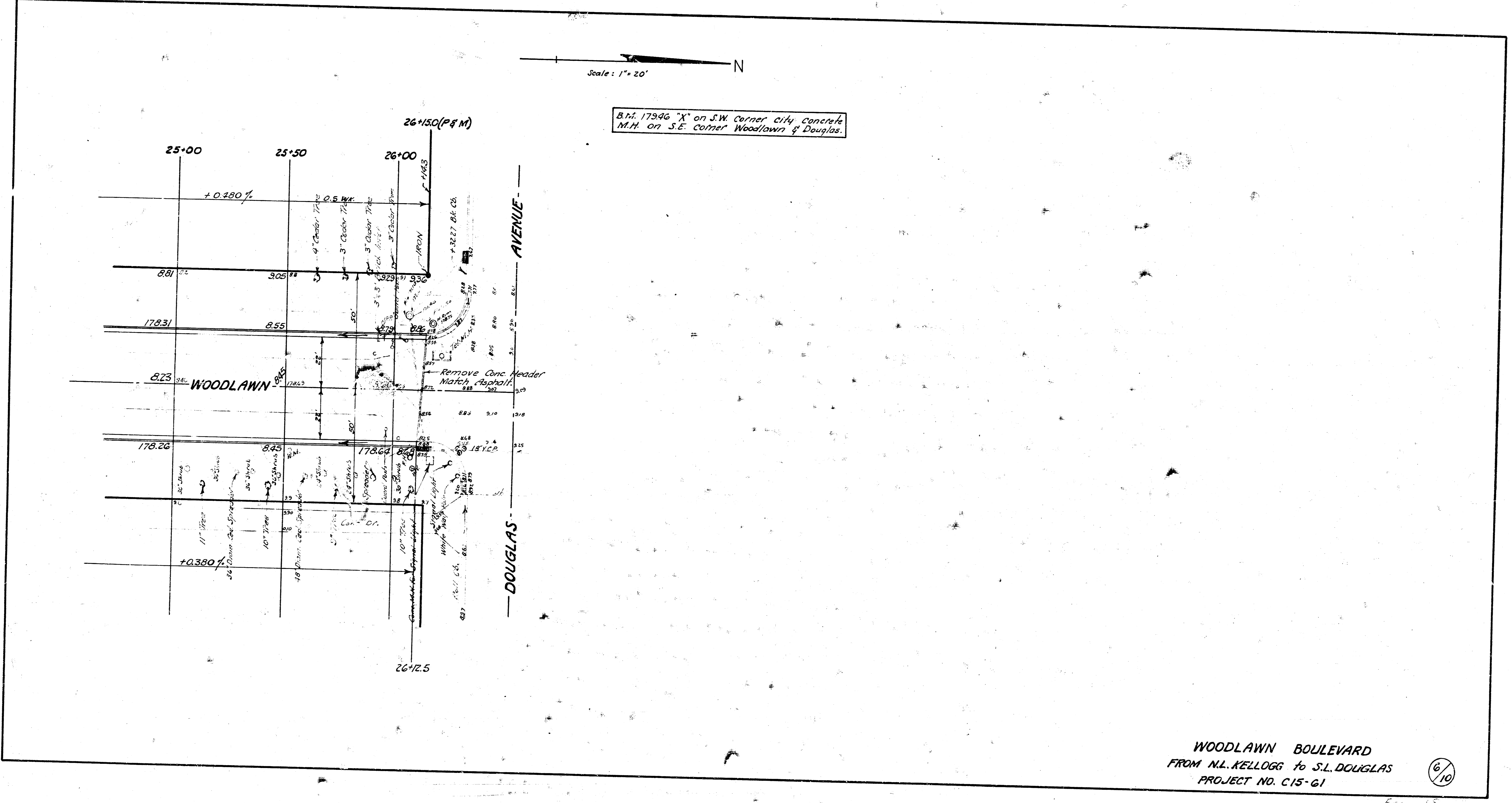
WOODLAWN BOULEVARD
FROM N.L. KELLOGG TO S.L. DOUGLAS
PROJECT NO. C15-61

4/10

B.M. 177.47 R.R. Spike on E. side P.R. & N.W. corner Woodlawn & English



WOODLAWN BOULEVARD
FROM N.L. KELLOGG to S.L. DOUGLAS
PROJECT NO. C15-61



Scale: 1" = 20'

B.M. 17946 "X" on S.W. Corner city concrete M.H. on S.E. Corner Woodlawn & Douglas.

WOODLAWN BOULEVARD
 FROM N.L. KELLOGG to S.L. DOUGLAS
 PROJECT NO. C15-61

6/10

Eng - 15
 4/21