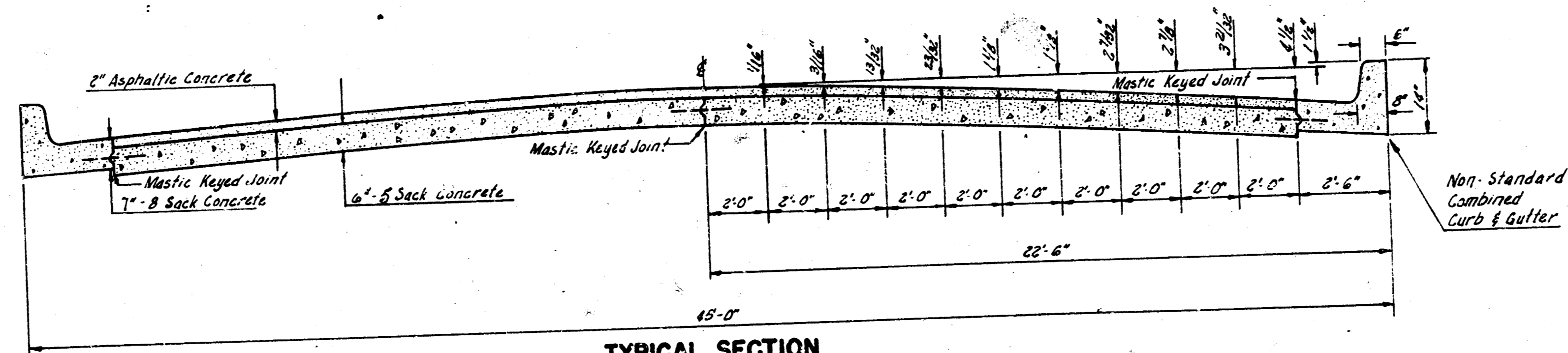
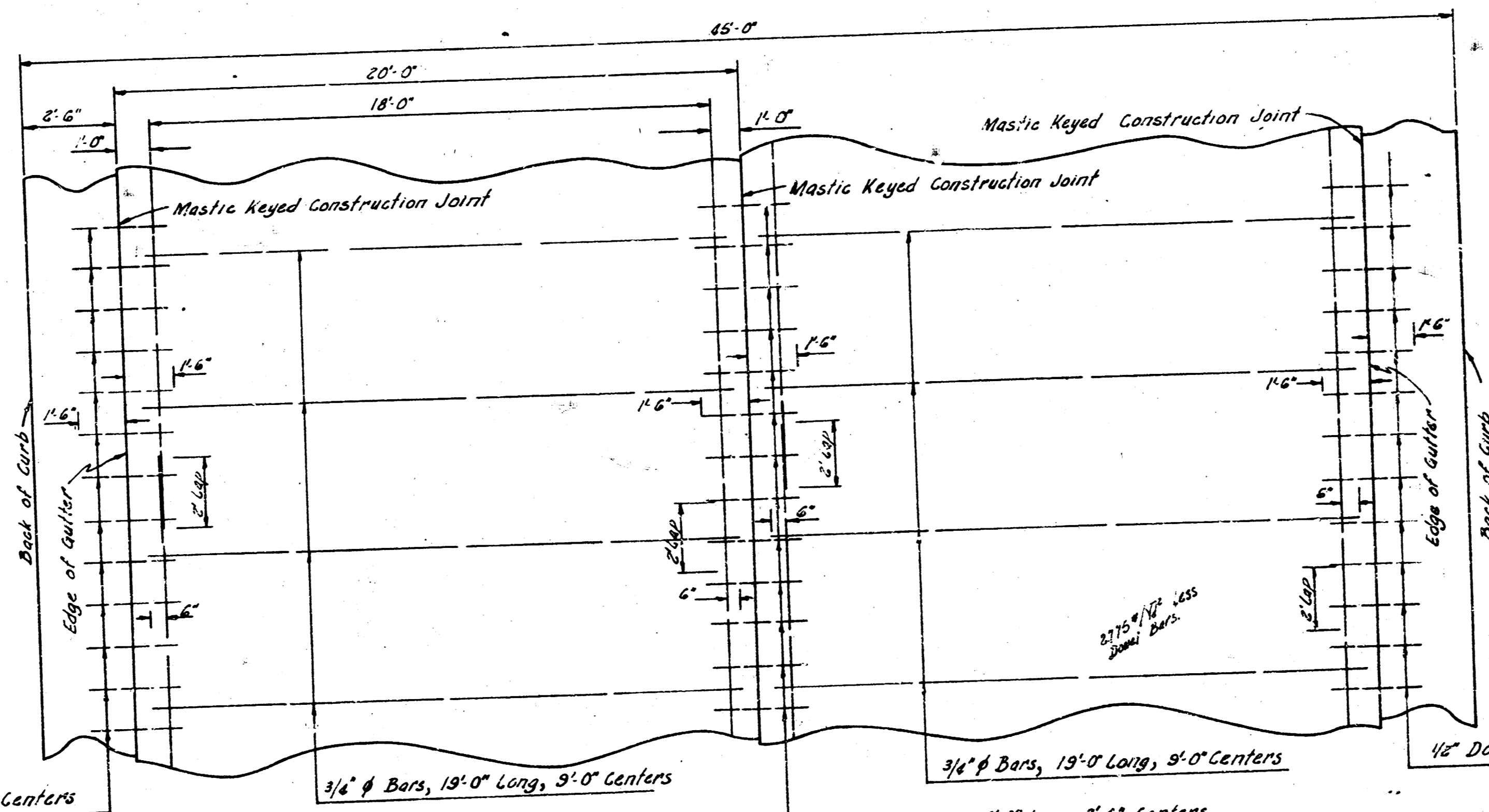


WOODLAWN BLVD.
W 1/2
SL M^c EWEN 5TH ADDN.-- SL 13TH ST.
PROJ. C16-145
C16-146



TYPICAL SECTION
NOT TO SCALE



1/2" #4 Dowel Bars, 3'-0" Long, 2'-6" Centers

3/4" #4 Bars, 19'-0" Long, 9'-0" Centers

1/2" #4 Dowel Bars, 3'-0" Long, 2'-6" Centers

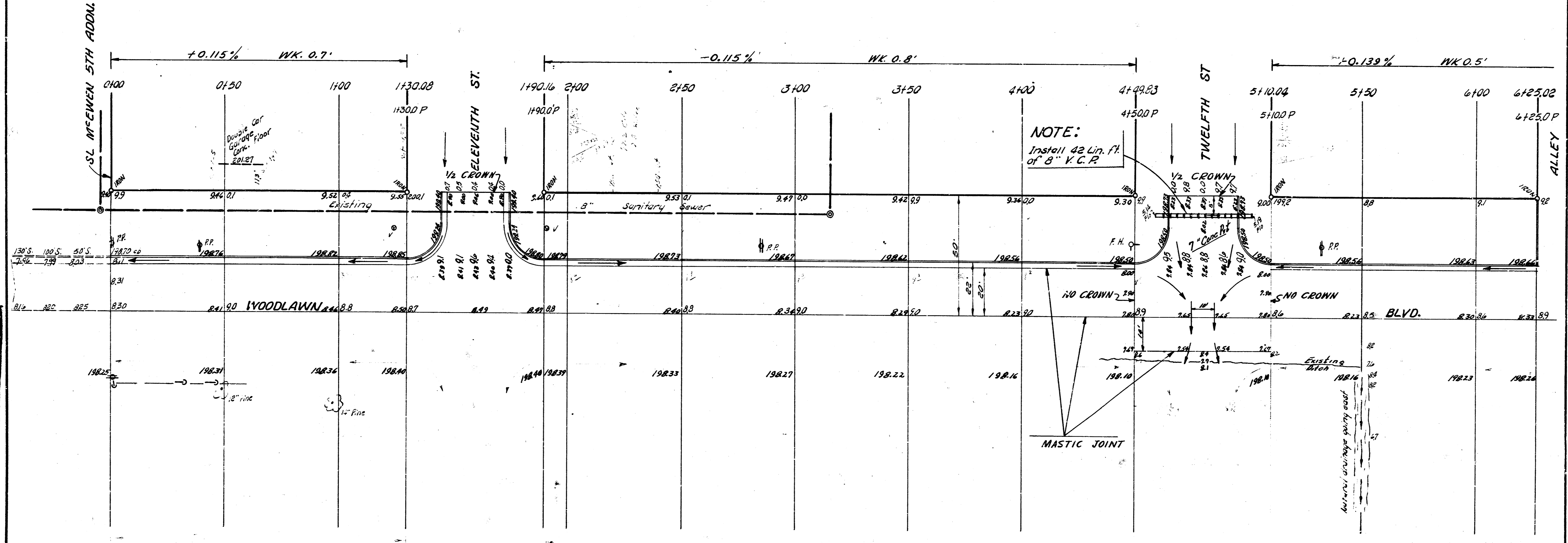
1/2" #4 Dowel Bars, 3'-0" Long, 2'-6" Centers

STEEL PATTERN
NOT TO SCALE
USE 3/4" #4 BARS EXCEPT WHERE NOTED

Date: 7/2/57
 J.W. J.W.
 R.S. J.W.
 77

B. M. 200.41 R. R. Spike S. S. of P. Pole on N.W. cor. 12th St & Woodlawn Blvd.
 B. M. 202.04 NE cor. Top Flat Stob McEwen Stone Monument at NW cor. 11th & Woodlawn. (extrem NE cor. Monument.)
 Stationing So. to No. on W. RZ.

SCALE 1" = 20'



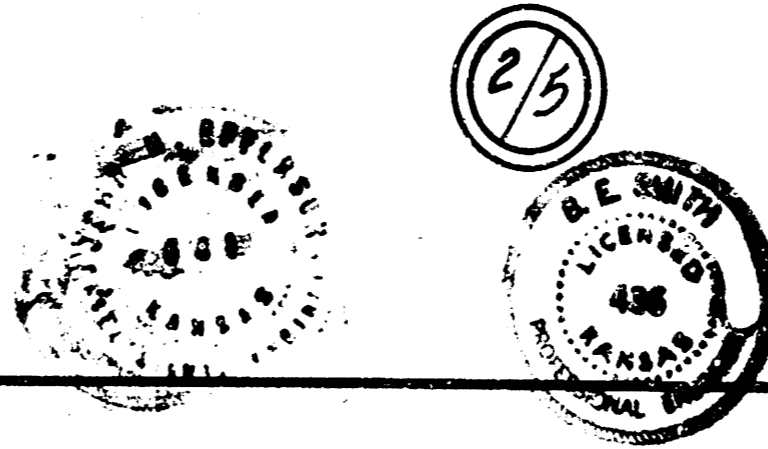
NOTE:
 Install 42 Lin. Ft.
 of 8" V.C.P.

MASTIC JOINT

Surveyed by
 B. E. Smith
 City Engineer
 May 1952

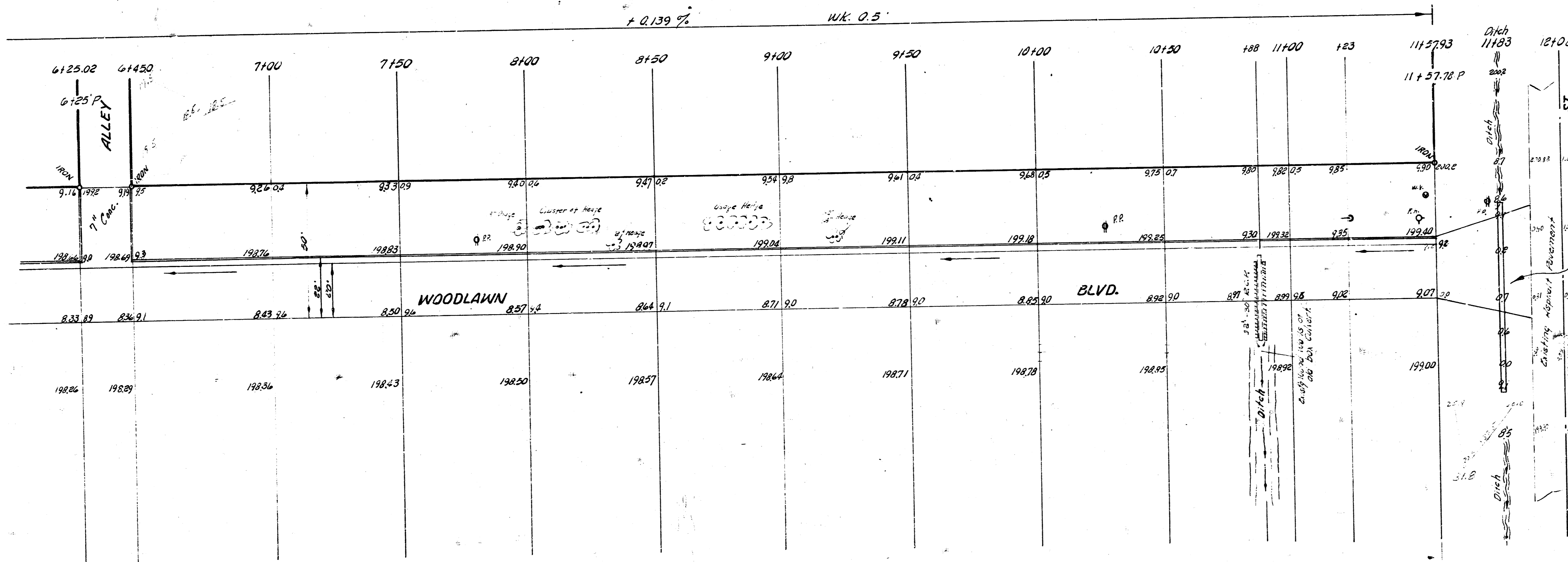
EXCAVATION		
400.0	Prep.	474
403.3	150' x 15'	184.5
406.3	150' x 15'	202
403.2 cu yds	171.5 cu yds	349.6
		191 34.5
		379.1 cu yds

W 1/2 WOODLAWN BLVD.
 SL M'EWEN 5TH ADDL. TO SL 13TH
 13'-2"-15" A.C.
 WIDEN TO 20'-2"-22" A.C. - 6" BASE
 CITY OF WICHITA, KANS.
 B. E. SMITH CITY ENGINEER
 MAY 1952 PROJ. NO. C16-145 f 146



B.M. 200.25 City Standard S.W. cor 13th St. & Woodlawn Blvd.
Stationing on W. 12.

SCALE 1" = 20'



NOTE:
Construct Asphalt
Hook-up.
Install 48" of 18"
R.C.P. under
Hook-up.

W 1/2 WOODLAWN BLVD.

(3/5)

PROJ. NO. C16-145 & 146