

Street Improvements For  
**WOODLAND AT THE PARK ADDITION**  
**YELLOWSTONE CT. - From the East Line Yellowstone**  
**To and Including Cul-De-Sac**

Project No.  
**472-76-245-81819-000-000-001**

City of Wichita, Kansas - Michael E. Lindebak, City Engineer

**Index to the Plans**

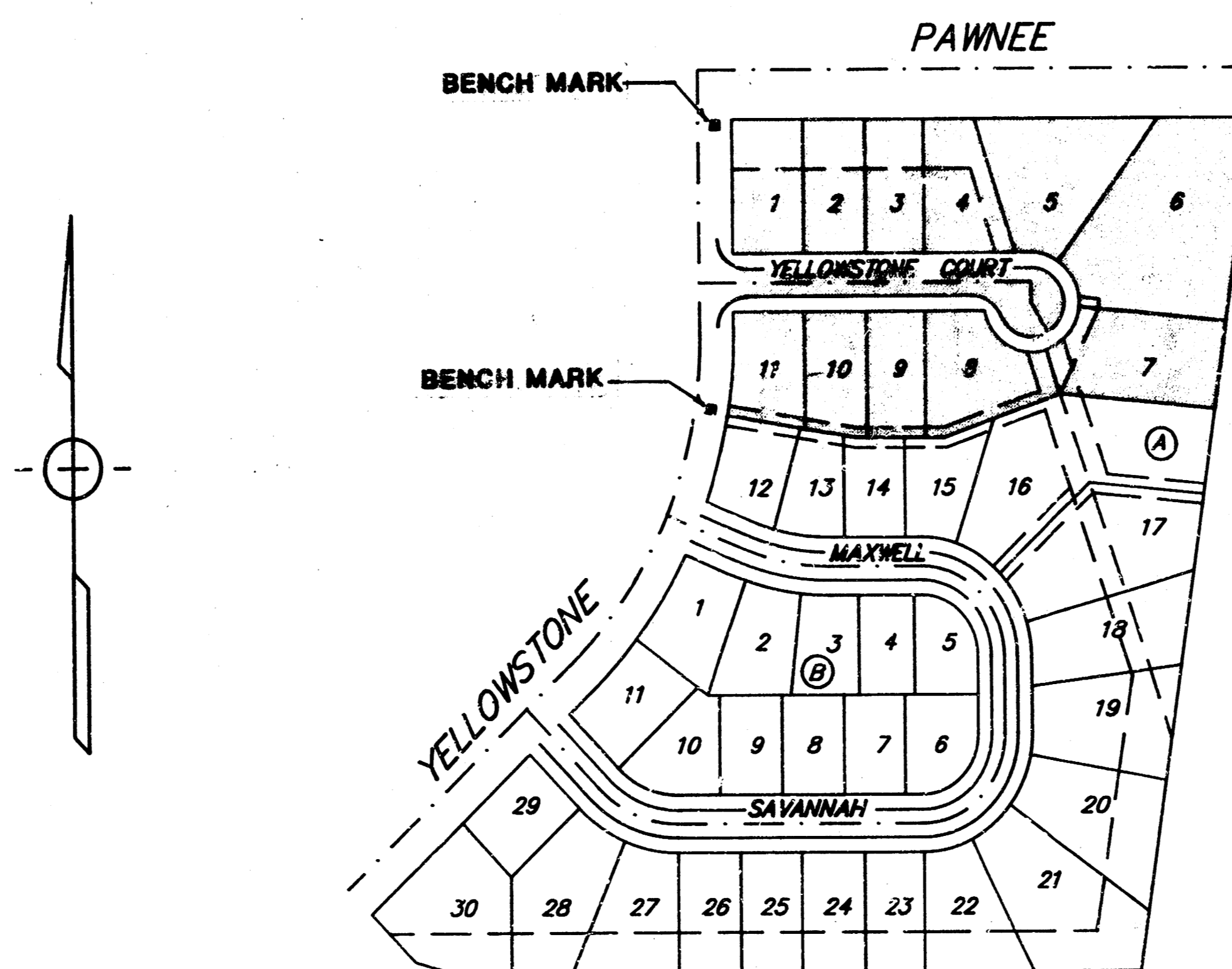
- 1 COVER SHEET
- 2 TYPICAL 29' PAVEMENT SECTION
- 3 YELLOWSTONE COURT
- 4-5 EARTHWORK CROSS SECTIONS
- 6 PLAT OF WOODLAND AT THE PARK

**General Notes**

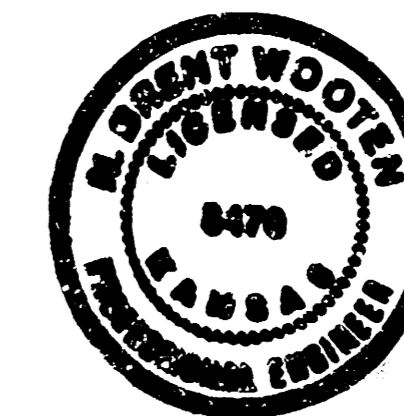
1. Utility service lines, poles, valve boxes, meters, and structures are to be adjusted as necessary by others prior to construction unless the plans specifically call for their adjustment by the Contractor or unless the plans specifically identify a utility to be adjusted by its owner during construction. Existing utilities and their location, as shown on the plans, represent the best information obtainable for design. The contractor will be required to work around existing utilities within the right-of-way which do not conflict with proposed construction.
2. This project includes a certain amount of roll type curb construction. Roll Curbs shall be depressed through all driveway openings when such drives are constructed as a part of the project.
3. No more than 4 drives 20 feet in width, or equivalent combinations thereof, are to be constructed with this project.
4. Trees and shrubs in public right-of-way which are in direct conflict with proposed new construction shall be removed by the Contractor with the Engineer's approval. Trees and shrubs which are not in direct conflict with proposed new construction shall be saved and protected from damage.
5. Limits of earthwork shall match existing ground elevations at the right-of-way line unless otherwise noted on the plans with a new finished grade elevation. When a new finished grade elevation is shown, the earthwork shall extend one foot beyond the right-of-way line and then sloped up or down using permissible slopes to match the existing ground surface.
6. The Contractor shall be responsible for preserving property irons. The Contractor will be required to re-establish any property irons which are damaged or destroyed by his construction operations. Such irons shall be re-established by a licensed land surveyor in accordance with state laws.

**BENCH MARKS**

- BENCH MARK: Square cut in top of curb on the east side of Yellowstone, at the southwest corner of Lot 11, Block A, Woodland at the Park Addition. Elevation = 126.72
- BENCH MARK: Square cut in top of curb on the east side of Yellowstone, at the northwest corner of Lot 1, Block A, Woodland at the Park Addition. Elevation = 122.46

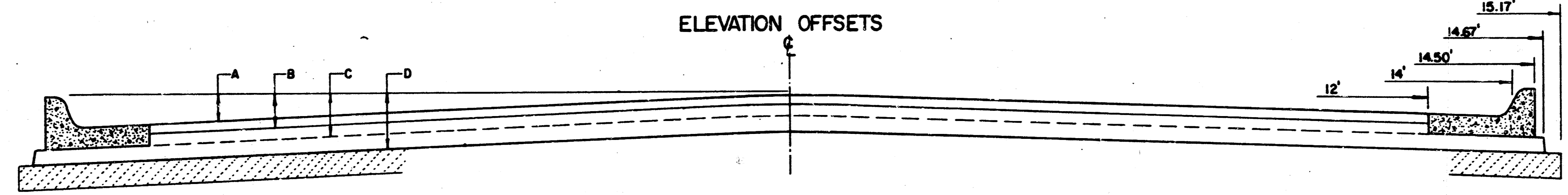
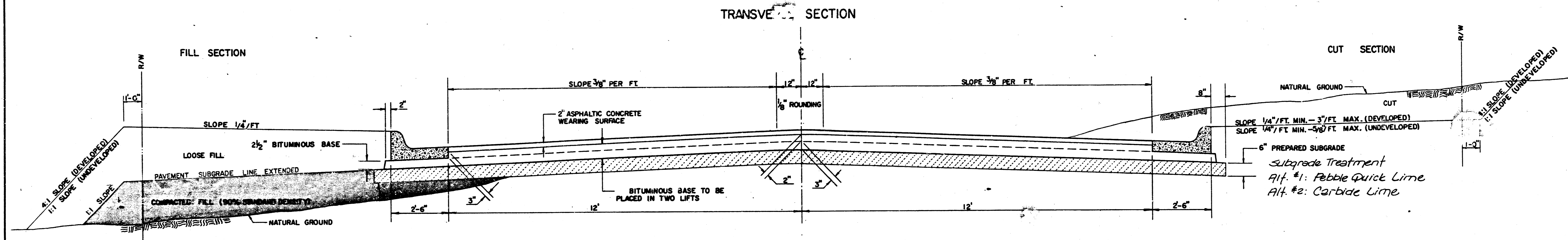


Benefit District

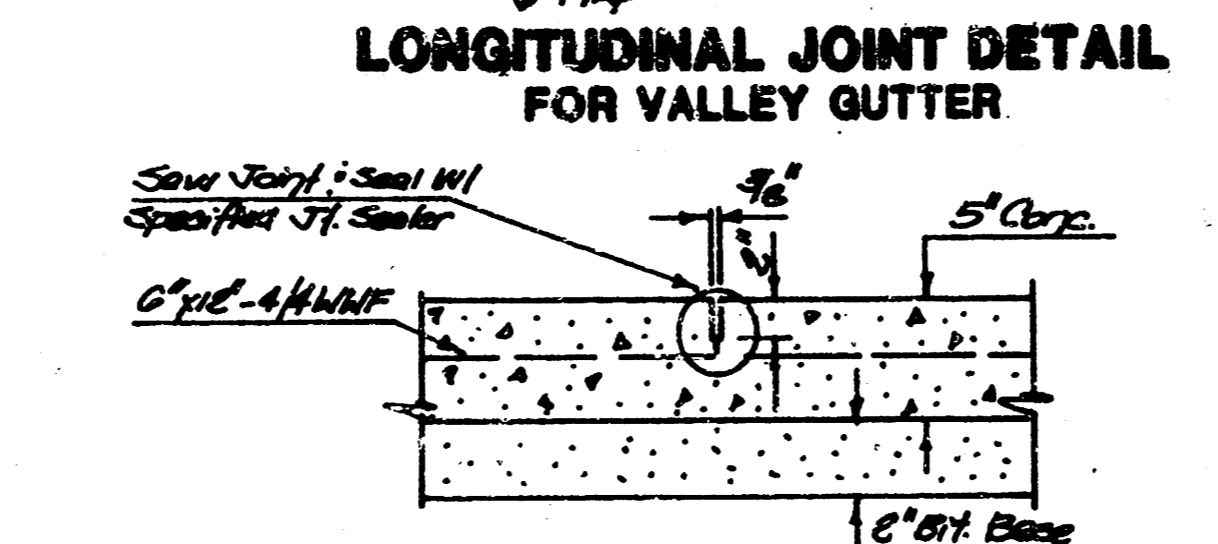
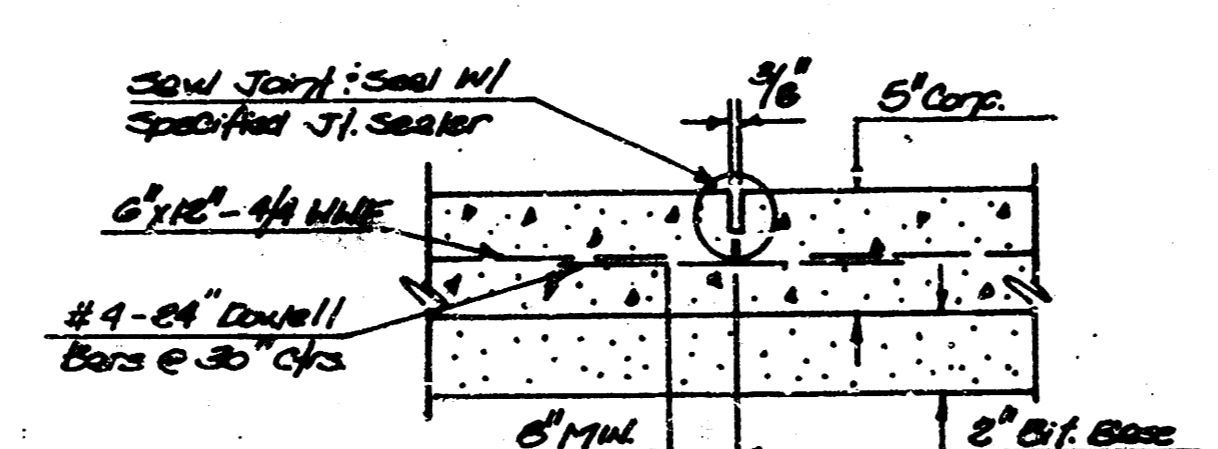
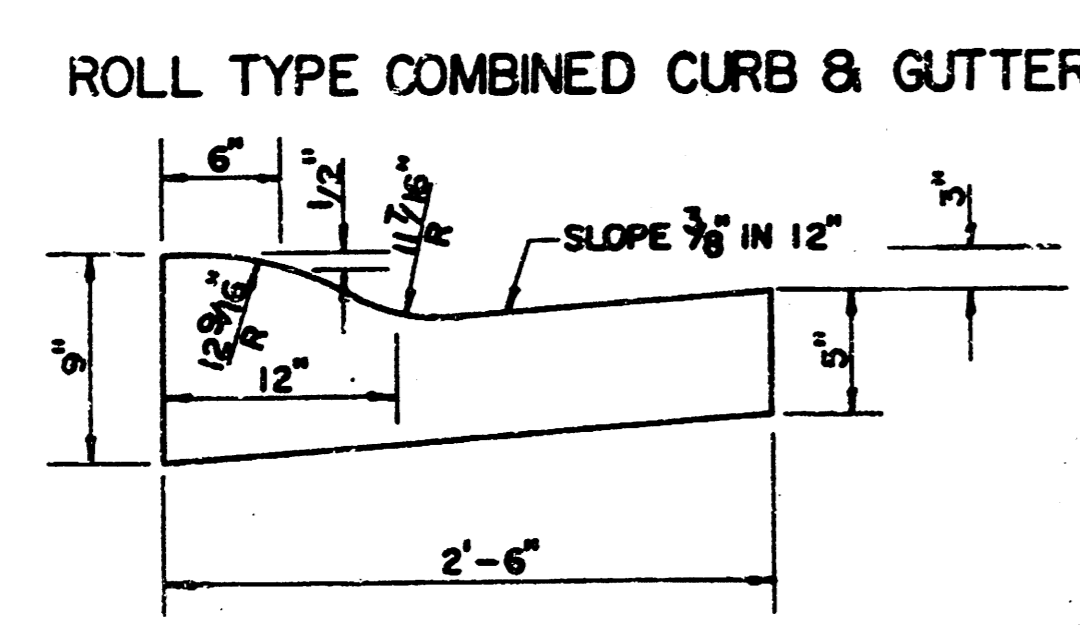
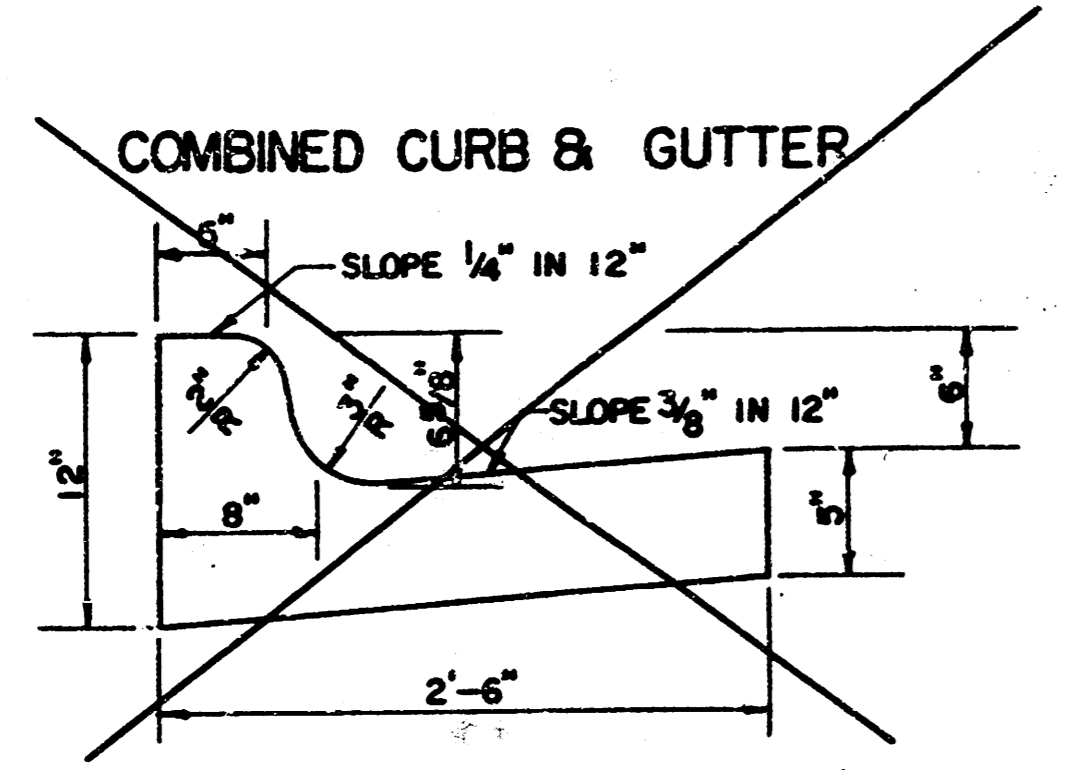
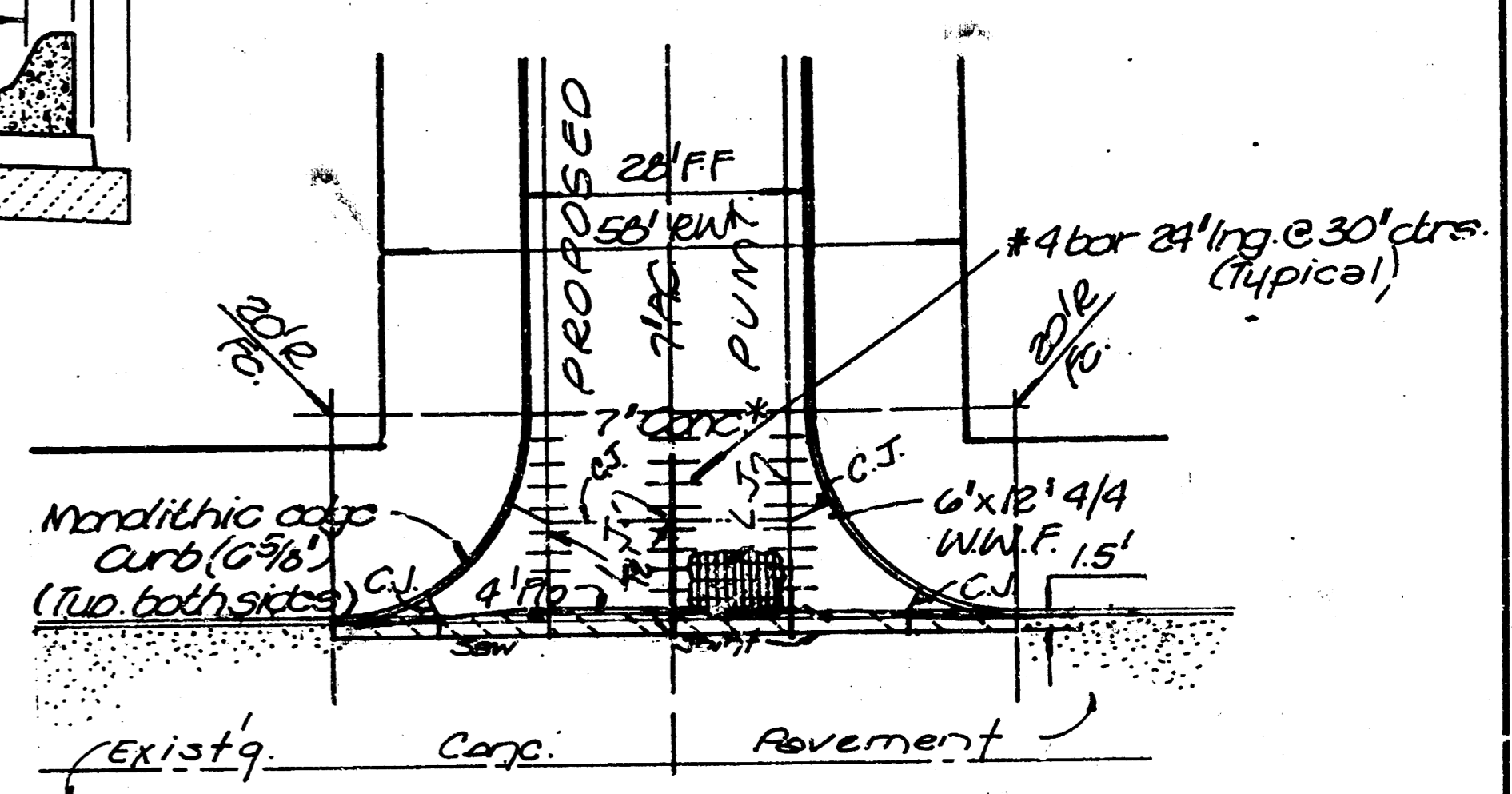


7/15/68  
**BAUGHMAN COMPANY P. A.**  
 SURVEYING & ENGINEERING  
 318/282-7271 • 315 ELLIS • WICHITA, KANSAS 67211

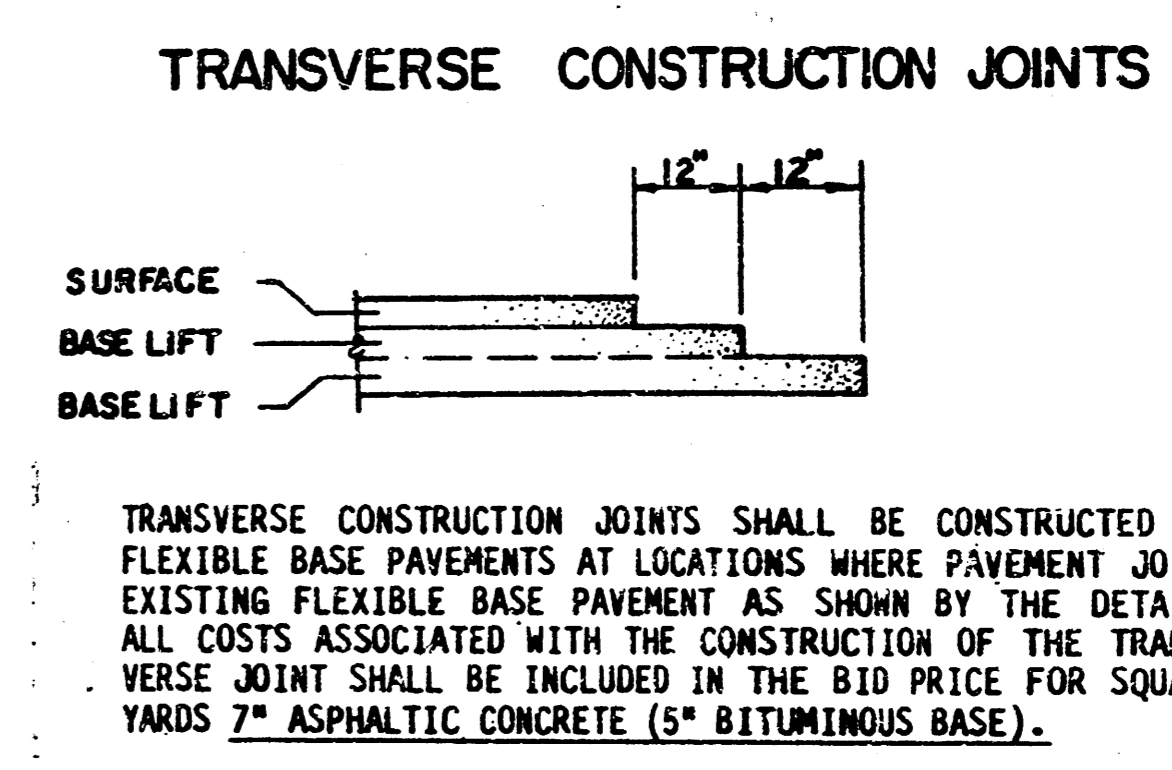
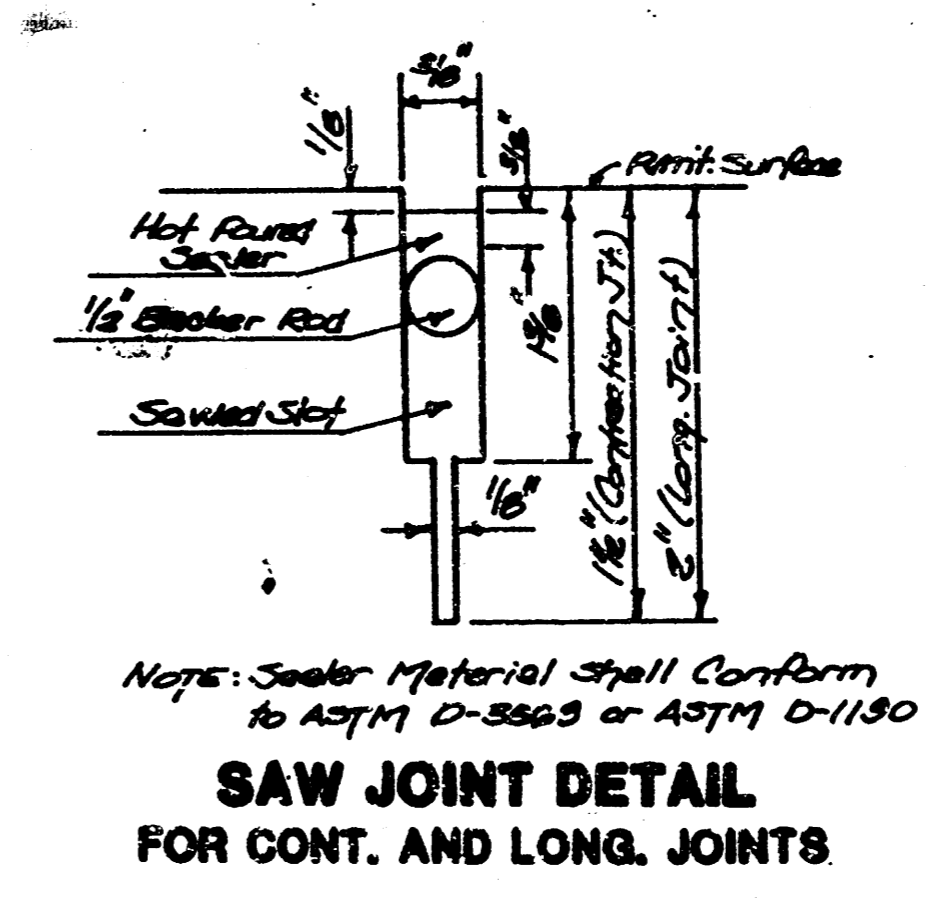
# TYPICAL 29' PAVEMENT DETAILS



	DISTANCE FROM CENTERLINE (LT. & RT.)											
	0'	2'	4'	6'	7'	8'	10'	12'	14'	14.5'	14.67'	15.17'
A: TOP OF CURBS TO TOP OF SURFACE LIFT	0.13	0.18	0.24	0.30	0.33	0.36	0.43	0.49	—	—	—	—
B: TOP OF CURBS TO TOP OF UPPER BASE LIFT	0.30	0.35	0.41	0.47	0.50	0.53	0.60	0.66	—	—	—	—
C: TOP OF CURBS TO TOP OF LOWER BASE LIFT	0.47	0.52	0.60	0.68	0.71	0.75	0.83	0.90	0.98	1.00	1.01	—
D: TOP OF CURBS TO TOP OF SUBGRADE	0.72	0.77	0.84	0.91	0.94	0.98	1.05	1.12	1.19	1.21	1.21	1.23



- GENERAL NOTES**
- 1) THE ASPHALTIC CONCRETE PAVEMENT BETWEEN THE COMBINED CURB AND GUTTER SHALL BE PAID AS SQUARE YARDS OF 7" ASPHALTIC CONCRETE (5" BITUMINOUS BASE).
  - 2) THE BITUMINOUS BASE UNDER AND BEHIND THE COMBINED CURB AND GUTTER SHALL BE PAID AS SQUARE YARDS OF 2 1/2" BITUMINOUS BASE.
  - 3) A TACK COAT OF EMULSIFIED ASPHALT (SC-1H OR OSS-1H) SHALL BE APPLIED AT AN APPROXIMATE RATE OF 0.05 GALLONS PER SQUARE YARD BETWEEN EACH LIFT OF ASPHALTIC MATERIAL.
  - 4) BITUMINOUS BASE AND ASPHALTIC CONCRETE WEARING SURFACE SHALL BE PLACED WITH A LAYDOWN MACHINE HAVING AUTOMATIC CONTROLS FOR LINE AND GRADE.
  - 5) CONSTRUCTION JOINTS IN EACH LIFT SHALL BE STAGGERED A MINIMUM DISTANCE OF ONE (1) FOOT FROM JOINTS IN PRECEDING LIFTS AND PLACED SO THAT A JOINT WILL BE CONSTRUCTED ON THE CENTERLINE OF THE TOP LIFT.
  - 6) CONTRACTOR TO BID ONLY ONE SUBGRADE TREATMENT ALTERNATE WHEN ALTERNATES ARE PROVIDED IN THE PROPOSAL AND CONTRACT. THE ALTERNATE CHOSEN BY THE SUCCESSFUL BIDDER SHALL BE USED IN CONSTRUCTING THIS PROJECT.

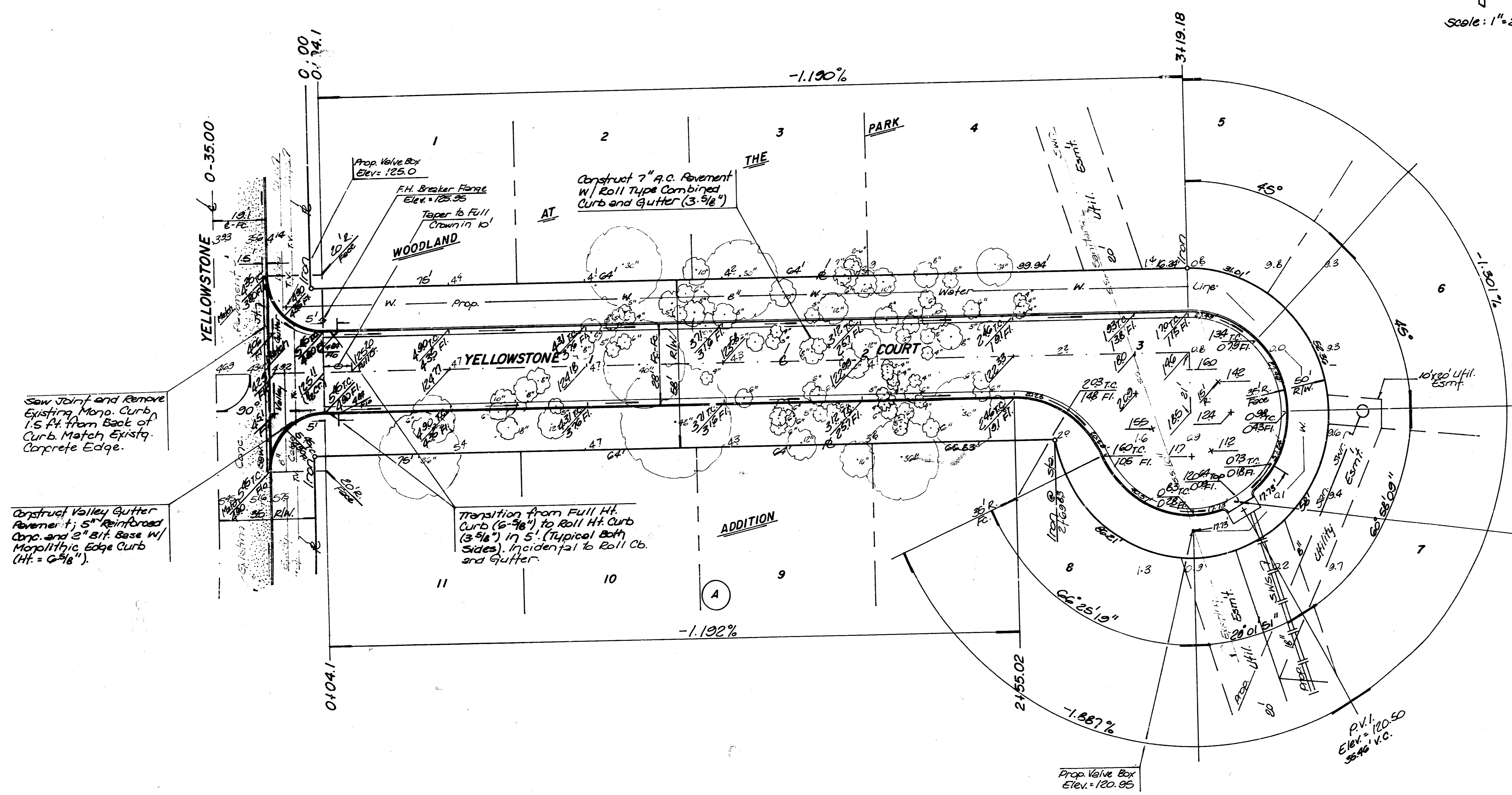
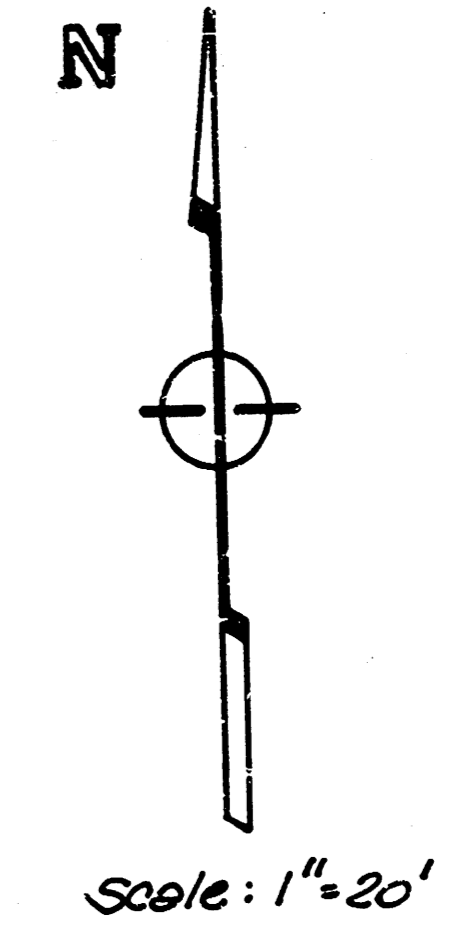


7 INCH RESIDENTIAL ASPHALTIC CONCRETE PAVEMENT WITH 5 INCH BITUMINOUS BASE  
 CITY OF WICHITA, KANSAS  
 PROJECT NUMBER  
 472-73-245-81819-000-001 2/6

Bench Mark: 1" Cut in Top of Curb, East Side of Yellowstone @ the S.W. Corner of Lot 11, Block A, Woodland At The Park Addition, Elev. = 126.72

Bench Mark: 1" Cut in Top of Curb, East Side of Yellowstone @ the N.W. Corner of Lot 1, Block A, Woodland At The Park Addition, Elev. = 122.46

NOTE: Roll Type Curb to Be Constructed on This Project.



Saw Joint and Remove Existing Mono. Curb 1.5 ft. from Back of Curb. Match Exstg. Concrete Edge.

Construct Valley Gutter Pavement, 5" Reinforced Conc. and 2" Bit. Base w/ Monolithic Edge Curb (Ht. = 6-5/8").

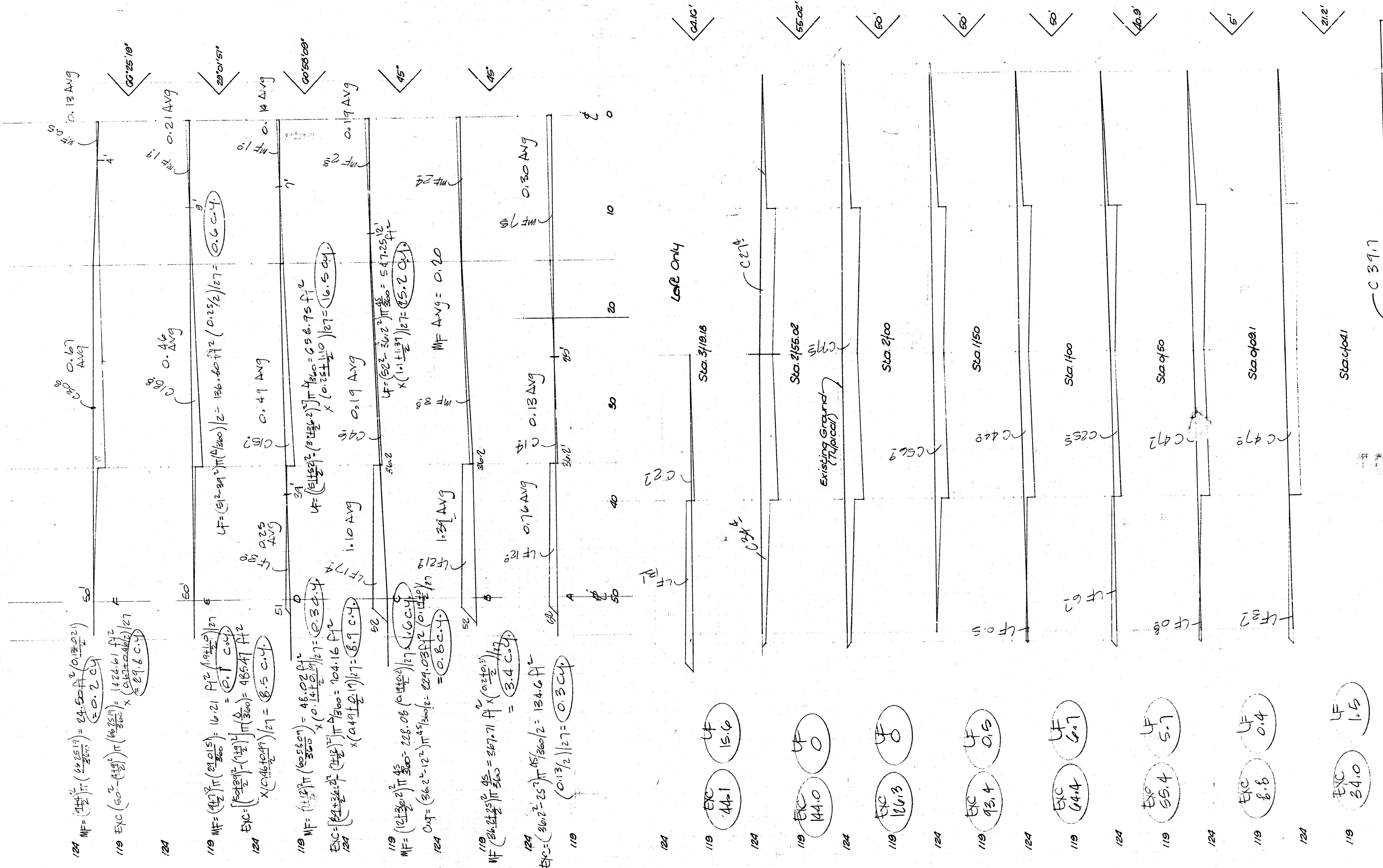
INTERSECTION QUANTITIES

5.1	Concrete Pavement
5.1	Asph. Conc. Pavement ( Bituminous Base)
5.1	Bituminous Base
1.1	Combined Curb and Gutter
62.6	Monolithic Edge Curb (6-5/8")
5.1	4" Metal Chair Ramp
5.1	4" Walk
32.0	Subgrade Manipulation
22.3	5.0" Concrete and 2" Asphaltic Conc. Base

**EARTHWORK SUMMARY**  
 Excavation = 669.5 Cu. Yds.  
 110 = 67 Cu. Yds.  
 Total = 736.5 Cu. Yds.

Subgrade Manipulation = 1546 Sq. Yds.

YELLOWSTONE COURT	
<b>BAUGHMAN COMPANY P. A.</b> SURVEYING & ENGINEERING 316/262-7271 • 315 ELLIS • WICHITA, KANSAS 67211	
PROJECT NUMBER <b>472-78-245-81819-000-001</b>	
DESIGN C.B.	DATE 7/15/88
DRAWN C.B.	SCALE 1" = 20'
APPROVED [Signature]	SHEET 3 OF 6



PROJECT TOTALS

Exc	MF	LF
416.7	5.6	12.7
cy	cy	cy
20	20	30

EARTHWORK TOTALS

Exc	MF	LF
407.5	5.6	12.7
C.YDS.	C.YDS.	C.YDS.
20	20	30

Yellowstone Ct.

EARTHWORK SECTIONS  
 WOODLAND AT THE PARK ADD.

