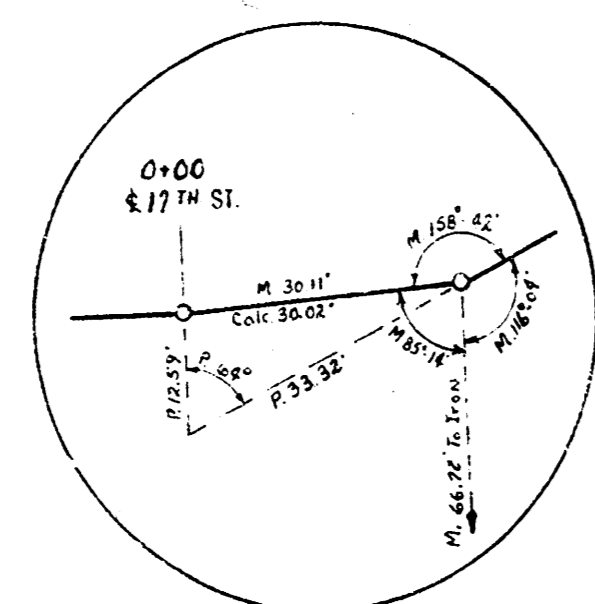


B.M. 120955 'X' TOP CURB, SO. END, S.E. COR., 17TH & WOODROW COURT.
 B.M. 120954 'R.R. SPIKE', SO. SIDE H.L.P., S.E. COR. 18TH & WOODROW COURT.
 BASE LINE AND STATIONING ON WEST PROPERTY LINE.

NOTES TO FIELD ENGINEER & CONTRACTOR

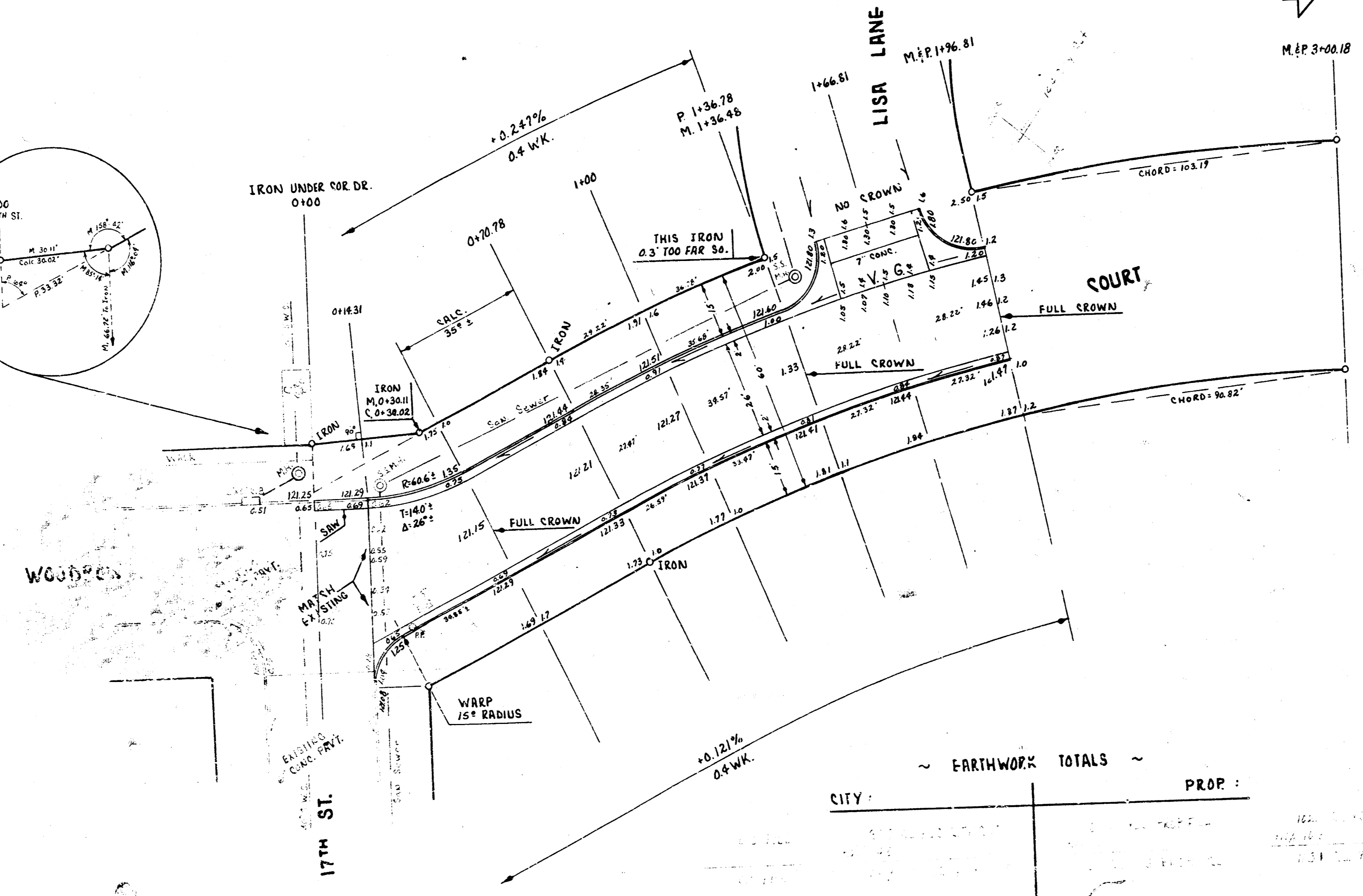
1. SAW AND REMOVE 2" STRIP OF EXISTING PAVT. STA. 0+00 TO STA. 0+16.8 AS SHOWN. REPLACE WITH COMBINED CB. & GTE TO GIVEN ELEVATIONS WITH
2. ANY DRIVE CONSTRUCTION TO PROPERTY SOUTH OF STA. 0+00 TO BE PAID CASH TO THE CONTRACTOR.



CURVE DATA STA. 0+70.78 TO STA. 1+36.81
 BASED ON WEST PROP. LINE
 FULL CURVE DATA (STA. 0+70.78 TO STA. 3+00.18):

$\Delta = 26^{\circ} 15'$
 $\Delta \Delta = 13^{\circ} 07' 30''$
 $R = 500.74$
 $LRC = 229.40$
 MIN. DEFL./FT. = 3.952658

STATION	DEFL. Δ	TOTAL DEFL. Δ	CHORD 8" OFF W.C.B.	CHORD 8" OFF P.C.B.	ARC ON W. PROP. L.
PT. 0+70.78					
1+00	1" 46' 15"	1" 46' 15"	28.81	24.12	29.12
1+26.78	2" 06' 15"	3" 46' 33"	34.26	32.88	36.78
1+46.80	1" 43' 03"	5" 29' 36"	29.60	26.69	34.02
1+74.21	1" 43' 01"	7" 12' 37"	29.69	26.63	34.01
END PROJ. NO. C19-6, PROP. LINE CURVE CONTINUES.					
1+99.8	5" 14' 22"	12' 07' 27"	101.74	92.26	103.37



EARTHWORK TOTALS

CITY :	PROP :

WOODROW COURT
 & 17TH ST. to N.L. LISA LA.
 26-2-30 AC.
CITY OF WICHITA, KANSAS
 B.E. SMITH CITY ENGINEER
 DATE: MAY 1959. PROJ. NO. C19-6



1/2