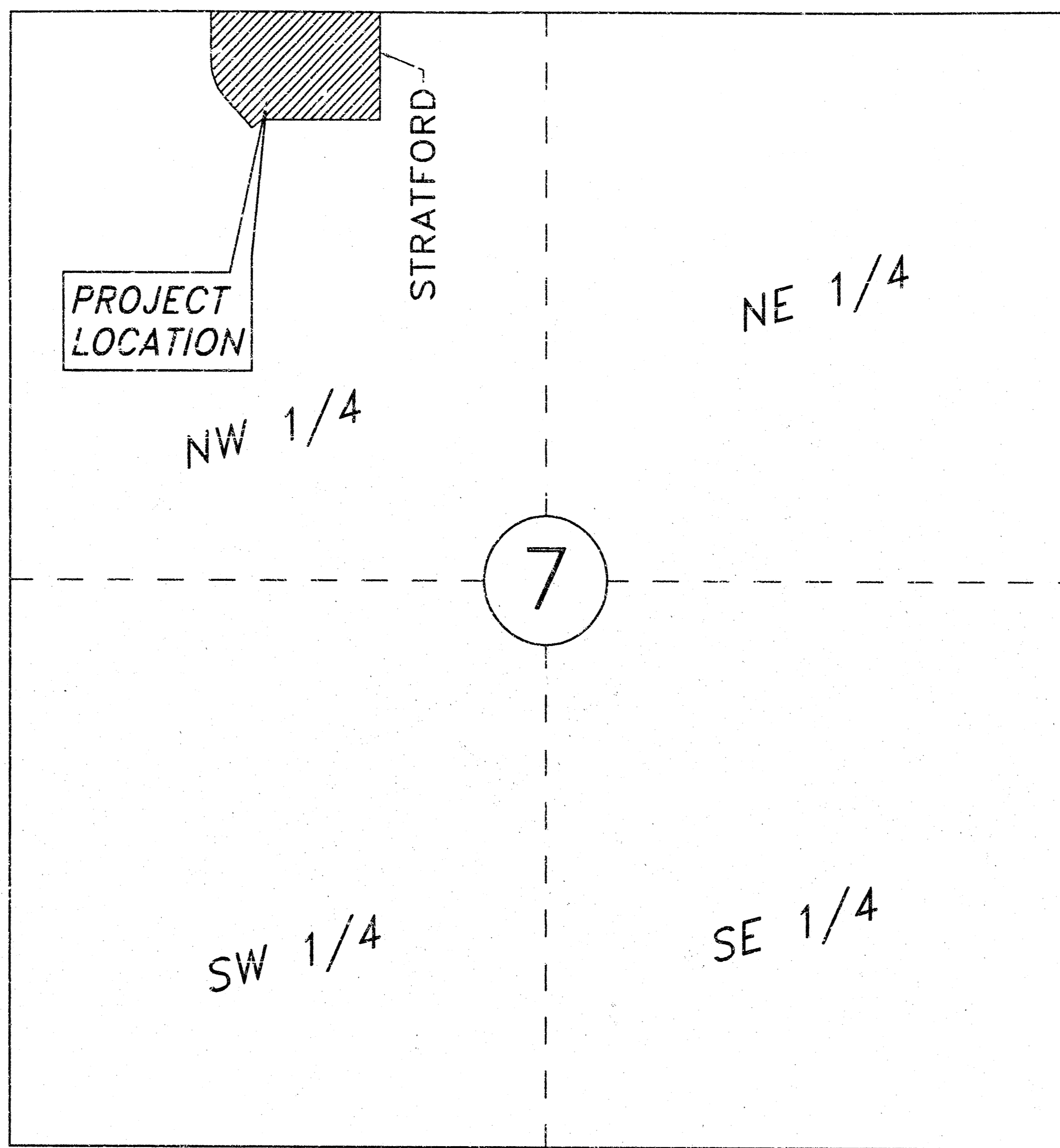


WICHITA SPORTS

SECTION 7, TOWNSHIP 27 SOUTH, RANGE 2 EAST
CITY OF WICHITA, SEDGWICK COUNTY, KANSAS

21 ST STREET



SHEET INDEX

COVER SHEET	C-1
TOPOGRAPHIC SURVEY	C-2
SITE DIMENSION PLAN	C-3
SITE GRADING PLAN	C-4
LINE A PLAN & PROFILE	C-5
LINE B PLAN & PROFILE	C-6
SITE UTILITY PLAN	C-7
STANDARD DETAILS	C-8
LANDSCAPE PLAN	L-1
IRRIGATION PLAN	L-2
LANDSCAPE DETAILS	L-3

LEGEND

	AIR VALVE (DOWN-OFF VALVE)
	BUSH
	FENCE
	FIRE HYDRANT
	GAS METER
	GAS VALVE
	OIL WELL
	IRON GRATE
	LIGHT POLE
	MANHOLE (UNKNOWN UTILITY)
	SANITARY SEWER MANHOLE
	STORM SEWER MANHOLE
	TELEPHONE MANHOLE
	POWER POLE
	ROUND POST
	SQUARE POST
	RAILROAD
	RETAINING WALL
	HANDICAP PKG SIGN
	NO PARKING SIGN
	SPEED LIMIT SIGN
	STOP SIGN
	STREET NAME SIGN
	WARNING SIGN
	TRAFFIC SIGNAL
	EVERGREEN TREE
	DECIDUOUS TREE
	UTILITY BOX/TELEPHONE PED
	WATER METER
	WATER VALVE
	EXIST UNDERGROUND WATER
	EXIST UNDERGROUND TELEPHONE CABLE
	EXIST UNDERGROUND SANITARY SEWER
	EXIST UNDERGROUND GAS
	EXIST OVERHEAD CABLE
	EXIST UNDERGROUND POWER CABLE
	CORRESPONDING NOTES
	PLATTED DISTANCE
	MEASURED DISTANCE
	FINISHED FLOOR
	REINFORCED CONCRETE PIPE
	REINFORCED CONCRETE BOX
	CORRUGATED METAL PIPE
	RIGHT-OF-WAY
	PROPERTY LINE

SCALE: 1" = 500'

LOCATION MAP

Sec. 7, T 27 S. R 2 E

General Notes:

- All Construction shall be done in strict accordance with the City of Wichita Regulations and Ordinances.
- All work not classified as a "Pay Item" shall be considered incidental construction and the cost of which shall be included in the cost of other bid items.
- All fill areas indicated shall be compacted to 95% Standard Proctor Density at \pm 2% optimum moisture content; refer to soils report.
- Contractor shall be responsible for verification of location of all utilities prior to excavation. Damage to any utilities or structures during excavation and construction of proposed sanitary sewer lines shall be the responsibility of the contractor. The One Call Utility Locate number is 1-800-344-7233.
Names & Telephone numbers of utility companies in the general area that may or may not be on this project:
K G & E Gas Mr. James B. Shimp, P.E. (316) 832-3120
Cavin Brummer (316) 832-3119
K G & E Electric Mr. Dan Morgan (316) 261-8434
Wichita Water & Sewer Department Mr. Steve Palmer (316) 268-4555
Wichita Water Department Mr. Chuck Steven (316) 268-4555
Southwestern Bell Telephone Co. Mr. Greg Sharpe (316) 279-2245
- All underground utilities shall be placed in good condition and adjusted to fit the new construction by the Contractor unless otherwise noted on the plans.

- Excavation and the removal of existing paving and curbs may not be washed on site and is to be hauled off by the contractor. Contractor to be responsible for the disposal of excess material and the cost shall be subsidiary to other bid items.
- It shall be the responsibility of the Contractor to control erosion and siltation during all phases of construction.
- All adjusted sanitary sewer and storm manholes which are in paved areas shall have machined bearing surfaces or bit down covers. Machined rings and covers, if necessary, will be furnished by the Contractor. All removed flags and covers shall become the property of the Contractor.
- All areas disturbed by the contractor shall be sodded unless otherwise noted on the plans.
- By use of these plans the Contractor agrees that he shall be solely responsible for the safety of the construction workers and of the public.
- The Contractor shall be responsible for the removal and/or temporary reworking and replacement of all existing street marker signs, stop signs, speed limit and other traffic control signs affected by construction.
- Contractor shall have insurance in accordance with the Chapter 13.01 of the Wichita Municipal Code.
- All Traffic Control in conjunction with construction will be in conformance with the Manual On Uniform Traffic Control Devices and the Wichita Traffic Handbook for Street Maintenance and Construction Operations.
- Water for compaction of earthwork shall be considered as subsidiary to other grading items.
- All concrete to be Kansas Class A (AK) Concrete.
- All crushed stone used as aggregate for concrete construction shall be obtained from quarries and beds designated by the Kansas Department of Transportation as meeting durability requirements of Class 1 or Class 6, as shown on file in the office of the City Engineer.
- The Contractor shall satisfy himself as to the accuracy of all measurements prior to construction of any permanent structure.
- BENCH MARK
Refer to sheet C-2 for Bench Mark locations.

SUBMITTED BY LHE P.A.

DENNIS L. LINDSEY
KANSAS P.E. NO. 10626

9/26/94
DATE

APPROVED AS NOTED
By CITY ENGINEER OF WICHITA

Sanitary Sewers _____
Storm Sewers VRH 5/10/94
Driveway Approaches _____
Water Mains _____
Paving _____

City of Wichita Private Project Number 454 PPS.
Index Code 607861 Storm Water System to serve
lots 1 and 2 Northborough Addition.
City Engineer: Michael E. Lindebak

13000 W. 87TH PARKWAY, SUITE 108
LENEXA, KANSAS 66215-2079
P.A.
913/892-5615 FAX 913/492-5880
ENGINEERS & SURVEYORS • PLANNERS • TRANSPORTATION

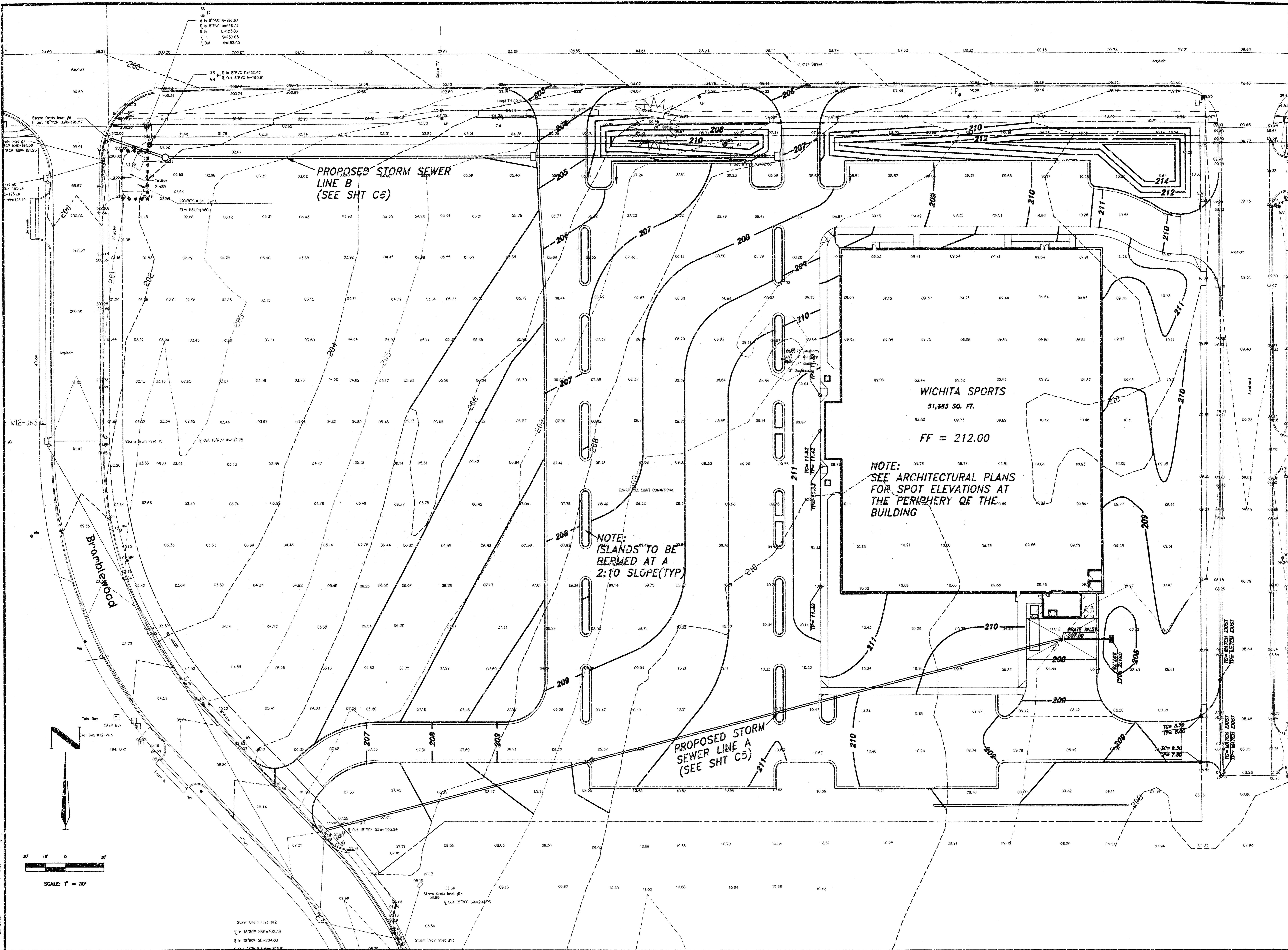
WICHITA SPORTS
21ST & STRATFORD
WICHITA, KANSAS 37202

COVER

NO.	REVISION	DATE	APP'D
1	REVISED PER CITY COMMENTS	4-26-94	

JOB NUMBER: 580706
FIELD BOOK:
DRAWN BY: TAM
CHECKED BY: DLL
DATE:
2-15-94
SHEET NUMBER

C-1



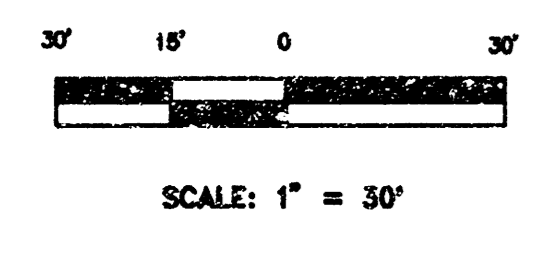
PROPOSED STORM SEWER
LINE B
(SEE SHT C6)

WICHITA SPORTS
51,883 SQ. FT.
FF = 212.00

NOTE:
SEE ARCHITECTURAL PLANS
FOR SPOT ELEVATIONS AT
THE PERIPHERY OF THE
BUILDING

NOTE:
ISLANDS TO BE
BERMED AT A
2:10 SLOPE(TYP)

PROPOSED STORM
SEWER LINE A
(SEE SHT C5)



13000 W. 87TH PARKWAY, SUITE 108
LENEXA, KANSAS 66215-2879
P.A. 913/492-5815 FAX 913/492-5888
ENGINEERS • SURVEYORS • PLANNERS • TRANSPORTATION

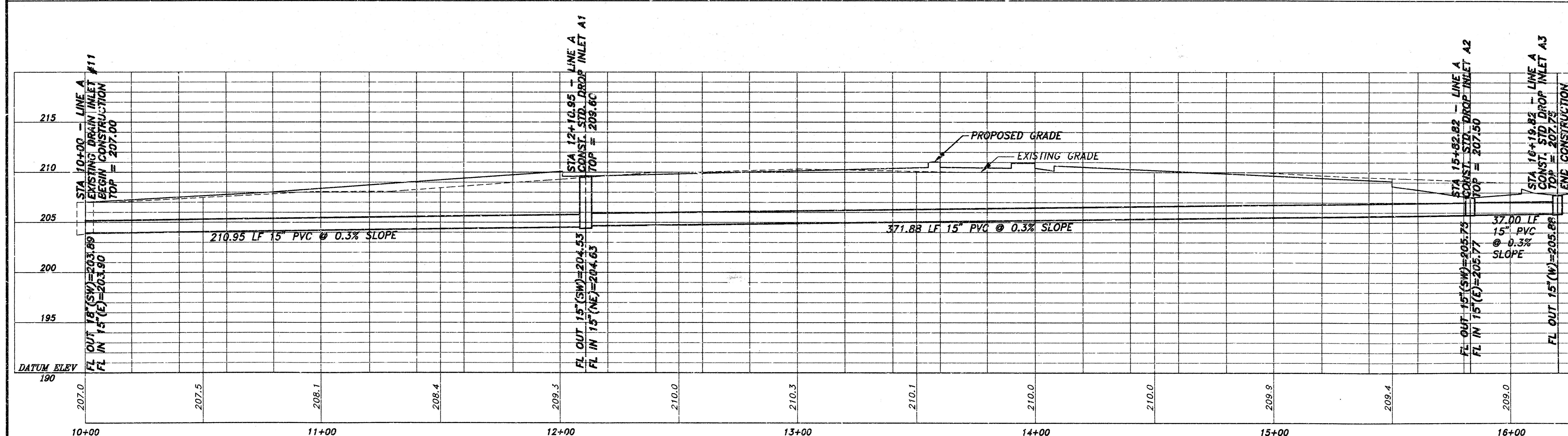
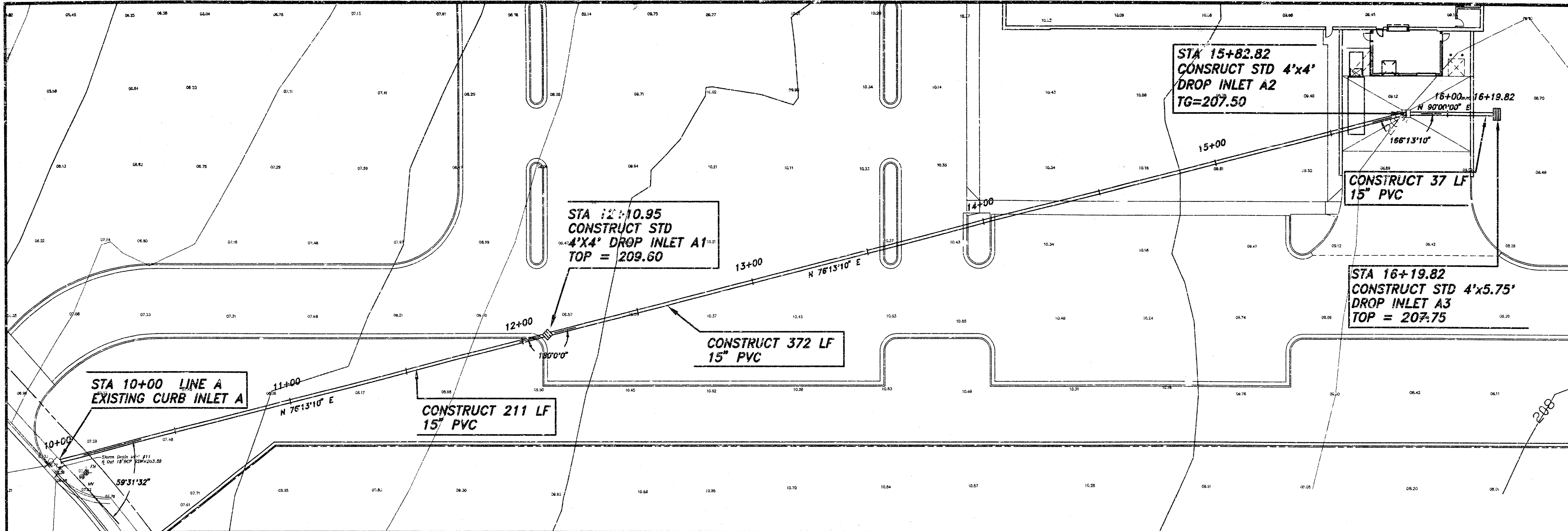
WICHITA SPORTS
21ST STREET & STRATFORD
WICHITA, KANSAS 37202
SITE GRADING PLAN

NO.	DESCRIPTION	DATE	APP'D
1	PER ARCHITECTS COMMENTS	2-23-94	
2	PER ARCHITECTS COMMENTS	2-23-94	

REVISIONS

JOB NUMBER: 560706
FIELD BOOK:
DRAWN BY: ADM
CHECKED BY: DLL
DATE: 2-23-94
SHEET NUMBER:

C-4



13000 W. 87TH PARKWAY, SUITE 108
 LENEKA, KANSAS 66215-2879
 P.A. 313-442-8800 FAX 313-442-8889
 ENGINEERS • SURVEYORS • PLANNERS • TRANSPORTATION

WICHITA SPORTS
 21ST STREET & STRATFORD
 WICHITA, KANSAS 37202

PLAN + PROFILE-A

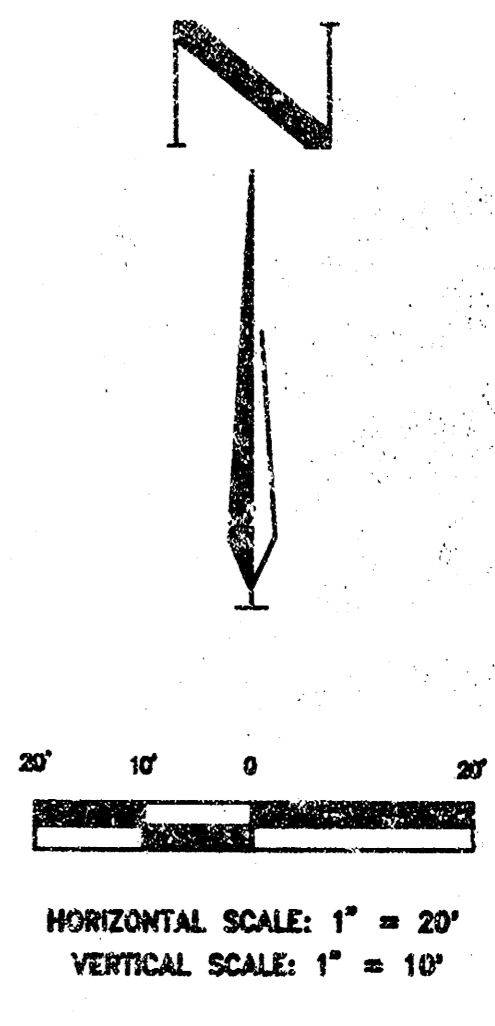
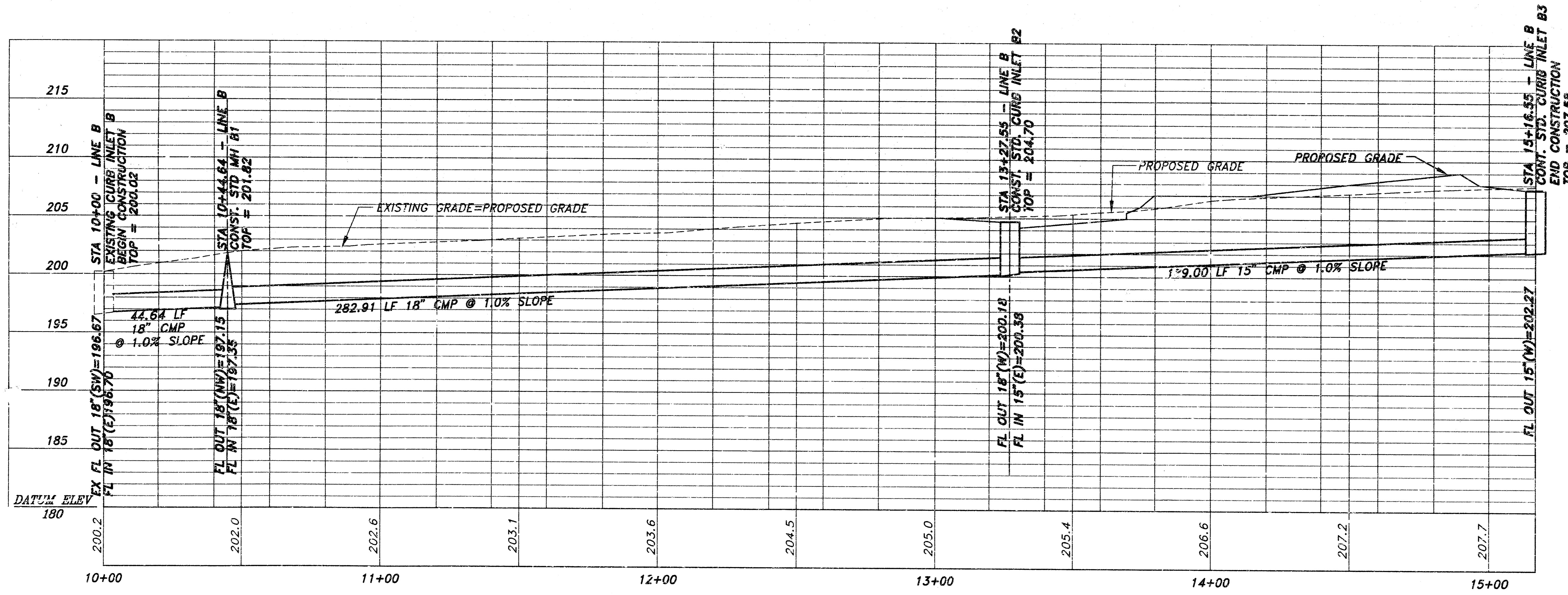
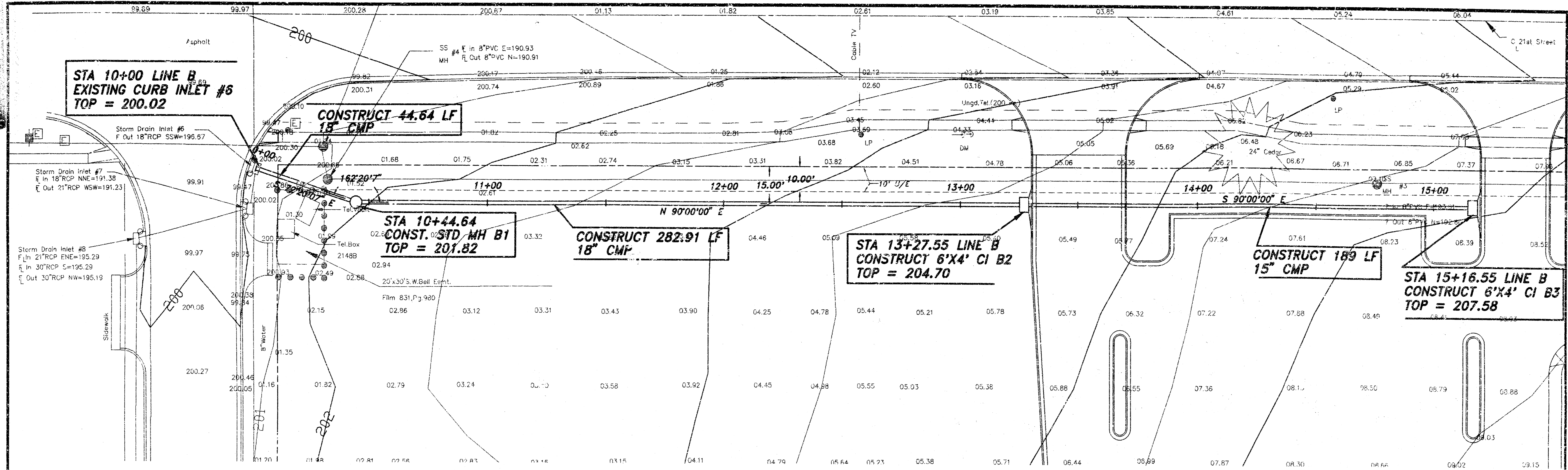
NO.	DESCRIPTION	DATE	APP'D
1	REVISED GRADE INLET	2/27/94	ADM
2	REVISED PER CITY COMMENTS	4/20/94	ADM

JOB NUMBER: 580706
 FIELD BOOK:
 DRAWN BY: ADM
 CHECKED BY: DLL
 DATE: 2-15-94

SHEET NUMBER

CITY OF WICHITA PRIVATE
 PROJECT NO. 454 PPS
 INDEX CODE 607861

65



13000 W. 87TH PARKWAY, SUITE 108
 LENEXA, KANSAS 66215-2879
 P.A. 913/442-9603 FAX 913/442-9288
 ENGINEERS • SURVEYORS • PLANNERS • TRANSPORTATION

WICHITA SPORTS
 21ST STREET & STRATFORD
 WICHITA, KANSAS 37202

PLAN + PROFILE - B

NO.	DESCRIPTION	DATE	BY
1	REVISED PER CITY COMMENTS	4/20/94	ADM

JOB NUMBER: 580706
 FIELD BOOK:
 DRAWN BY: ADM
 CHECKED BY: DLL
 DATE: 2-15-94

SHEET NUMBER

CITY OF WICHITA PRIVATE
 PROJECT NO. 454 PPS
 INDEX CODE 607861

18-30-1