

STORM SEWER PLANS

TO SERVE

WAL★MART SUPERCENTER #4321-00

WICHITA, SEDGWICK COUNTY, KANSAS

NW 53RD ST. NORTH & N. MERIDIAN

2007

CITY OF WICHITA PRIVATE PROJECT NO. 1757PPS (607861)
 JAMES ARMOR, P.E., CITY ENGINEER

As Built Plans:
 CONTRACTOR: Key Construction
 INSPECTOR: Larry Gann, K E Miller Engineering
 .PDF by: NWS, 10-29-07

INDEX OF SHEETS

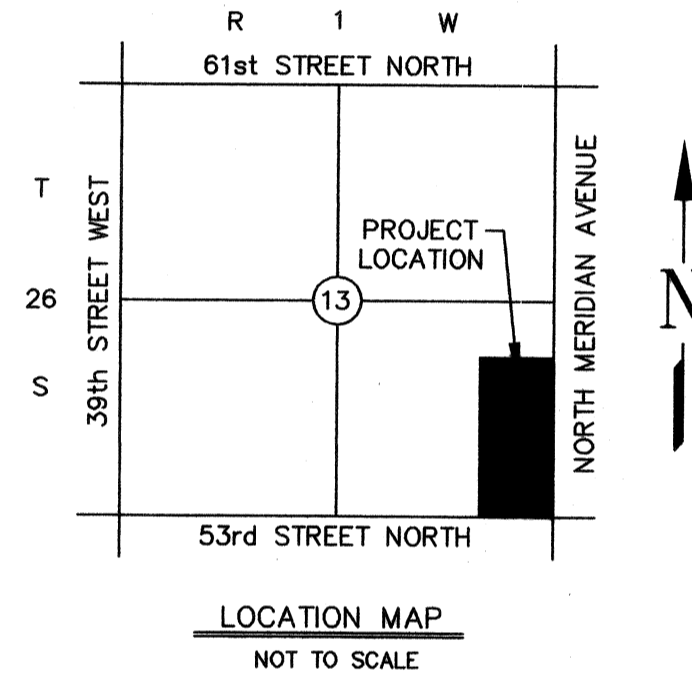
C-8.1	TITLE SHEET
PRIVATE STORM SEWER SYSTEM	
C-8.2A	PRIVATE STORM SEWER LINE LOCATION PLAN
C-8.2B	PRIVATE STORM SEWER LINE LOCATION PLAN
C-8.3	PRIVATE STORM SEWER LINE 'A' PLAN & PROFILE
C-8.4	PRIVATE STORM SEWER LINE 'A' (CONT.) & 'A2' PLAN & PROFILE
C-8.5	PRIVATE STORM SEWER LINE 'A1' PLAN & PROFILE
C-8.6	PRIVATE STORM SEWER LINE 'A3' & 'B' PLAN & PROFILE
C-8.7	PRIVATE STORM SEWER LINE 'D' PLAN & PROFILE
C-8.8	PRIVATE STORM SEWER LINE 'E' & 'F' PLAN & PROFILE
C-8.9	PRIVATE STORM SEWER LINE 'C' PLAN & PROFILE
C-8.10	PRIVATE STORM SEWER LINE 'C' (CONT.) PLAN & PROFILE
C-8.11	PRIVATE STORM SEWER LINE 'C' (CONT.) PLAN & PROFILE
C-8.12	PRIVATE STORM SEWER LINE 'D', 'D2' & 'G' PLAN & PROFILE
C-8.13	PRIVATE STORM SEWER LINE 'H', 'I' & 'I1' PLAN & PROFILE
C-8.14	MISCELLANEOUS STORM SEWER DETAILS
C-8.15	MISCELLANEOUS STORM SEWER DETAILS
C-8.16	STORM SEWER JUNCTION BOX DETAILS
C-8.17	REINFORCED CONCRETE MANHOLE
C-8.18	TYPE 22 CURB INLET
C-8.19	STAND PIPE WEIR FOR NORTH DETENTION POND
C-8.20	STAND PIPE WEIR FOR WEST DETENTION POND
PUBLIC STORM SEWER SYSTEM (NO. 1757PPS (607861))	
C-11.2	PUBLIC STORM SEWER LINE 'L' LOCATION PLAN
C-11.3	PUBLIC STORM SEWER LINE 'L' PLAN & PROFILE
C-11.4	PUBLIC STORM SEWER LINE 'L' (CONT.) & 'L-1' PLAN & PROFILE
C-11.5	PUBLIC STORM SEWER LINE 'L-1' (CONT.) PLAN & PROFILE
C-11.6	DOUBLE DROP & SINGLE DROP AREA INLET
C-11.7	REINFORCED CONCRETE MANHOLE
C-11.8	STANDARD & LIGHT WEIGHT MANHOLE FRAME & COVER
C-11.9	PUBLIC STORM SEWER MANHOLE COVER, TRENCHING & BEDDING DETAILS
C-11.10	MANHOLE ADJUSTMENT DETAILS
C-11.11	HEADWALL DETAILS FOR 18", 24" & 30" PIPE
C-11.12	STAND PIPE WEIR FOR SOUTH DETENTION POND

RESOURCE LIST

- | | |
|--|---|
| <p>GAS COMPANY
 AQUILA GAS COMPANY
 1611 SOUTH HOOVER
 WICHITA, KANSAS 67209
 PH: (316) 941-1808
 CONTACT: CALVIN BRIGGS</p> <p>KANSAS GAS SERVICE
 1021 EAST 26TH STREET NORTH
 WICHITA, KANSAS 67219
 PH: (316) 832-3101
 CONTACT: CHARLENE LAWLLESS</p> <p>KANSAS DEPT. OF TRANSPORTATION (KDOT)
 DISTRICT 5 (SOUTH CENTRAL DIVISION)
 ROBERT COOK - DISTRICT ENGINEER
 PH: (620) 663-3361</p> <p>CIVIL ENGINEERS
 SMC CONSULTING ENGINEERS, P.C.
 TERENCE L. HAYNES, P.E.
 815 WEST MAIN ST.
 OKLAHOMA CITY, OK 73106
 PH: (405) 232-7715
 FAX: (405) 232-7859</p> | <p>ELECTRIC COMPANY
 WESTAR ENERGY
 201 NORTH MARKET
 WICHITA, KS 67202
 PH: (316) 261-8824
 CONTACT: SHANE PRICE</p> <p>WATER & SEWER COMPANY
 CITY OF WICHITA, KS
 CITY HALL 455 NORTH MAIN
 WICHITA, KS 67202
 PH: (316) 268-4555
 FAX: (620) 421-7089
 CONTACT: BILL PERKINS</p> <p>PLANNING / ZONING
 CITY OF WICHITA
 METROPOLITAN AREA PLANNING
 DEPARTMENT
 CITY HALL - 10TH FLOOR
 455 NORTH MAIN
 WICHITA, KANSAS 67202
 PH: (316) 268-4421
 CONTACT: DONNA GOLTRY</p> <p>TELEPHONE COMPANY
 SOUTHWESTERN BELL
 154 NORTH BROADWAY, ROOM 210
 WICHITA, KS 67202
 PH: (316) 268-2245
 CONTACT: BOB ALLEY</p> |
|--|---|

OWNERS' ADDRESS

WAL-MART STORES, INC.
 702 S.W. 8TH STREET
 BENTONVILLE, AR 72716
 PH. (479) 273-4000



NOTE TO CONTRACTOR
 CALL KANSAS ONE
 1-800-522-6543

This number is to be used for information on the location of all underground utilities. Contact this number prior to any excavation.

APPROVED AS NOTED
 By CITY ENGINEER OF WICHITA

Sanitary Sewers _____

Storm Sewers VRH 3/29/07

Driveway Approaches _____

Water Mains _____

NOTE TO CONTRACTOR

INSPECTION AND TESTING FOR THIS PROJECT IS TO BE PROVIDED BY A LICENSED CONSULTING ENGINEERING FIRM UNDER CONTRACT WITH THE OWNER/DEVELOPER. SAID INSPECTION TO BE IN ACCORDANCE WITH THE CITY OF WICHITA STANDARD CONSTRUCTION ENGINEERING PRACTICES AND CERTIFIED BY A LICENSED PROFESSIONAL ENGINEER. NO WORK SHALL BE PERFORMED IN DEDICATED EASEMENTS OR THE PUBLIC RIGHT-OF-WAY BY THE CONTRACTOR WITHOUT SUCH INSPECTION NOR SHALL ANY WORK BE COMMENCED IN DEDICATED EASEMENT OR ANY RIGHT-OF-WAY WITHOUT WRITTEN AGREEMENT BY THE CITY ENGINEER.

- An effort has been made to locate and show approximate location of underground utilities. Buried utilities are not necessarily shown. It is the Contractors responsibility to locate and preserve all utility services.
- Proposed utility services have been coordinated with the local utility companies. Contractor is responsible for contacting all utility companies prior to construction.
- All quantity estimates shown in this set of plans are the Engineer's estimate and are provided for general information only. The Contractor is solely responsible for calculating his own quantities.
- All construction shall be done in accordance with Wal-Mart Sitework Specifications, and where applicable, as per the City of Wichita's Standard Specifications for Public Improvements and Kansas Department of Transportation's Standard Specifications for Highway Construction, latest edition.

I, Terence L. Haynes, Kansas Professional Engineer #14583, do hereby state that these storm sewer plans, prepared by me or under my direct, responsible supervision, are in strict conformance with the applicable Codes of the City of Wichita and the sound principles and practice of the Civil Engineering profession

Terence L. Haynes
 TERENCE L. HAYNES, P.E. #14583

REVIEWED BY: _____ DATE: _____
 CITY ENGINEER

BENCH MARKS:

- | | | |
|---|--|---|
| BM #1
R.R. SPIKE IN WEST SIDE OF P.P. AT N.E.N. CORNER OF INTER. 53rd AND MERIDIAN
ELEV=1332.96 | BM #2
R.R. SPIKE IN NORTH SIDE OF P.P. WEST OF MERIDIAN ON SOUTH SIDE OF 53rd STREET
ELEV=1331.15 | BM #3
R.R. SPIKE IN NORTH SIDE OF 4th P.P. WEST OF MERIDIAN ON SOUTH SIDE OF NW 53rd
ELEV=1332.89 |
| BM #4
R.R. SPIKE IN NORTH SIDE OF 8th P.P. WEST OF MERIDIAN ON SOUTH SIDE OF NW 53rd
ELEV=1333.28 | BM #5
CUT "X" ON 1/4" ON E. SIDE OF MERIDIAN W 65' IN SW 1/4 & APRX 65' S OF DR 5474 MERIDIAN
ELEV=1332.91 | BM #6
CUT "X" ON SOUTH END OF CONC. HOOD INLET ON EAST SIDE OF MERIDIAN AT 53rd MERIDIAN
ELEV=1332.16 |

TITLE SHEET	
STORM SEWER PLANS TO SERVE	
WAL-MART SUPERCENTER #4321-00	
N.W. 53rd ST. NORTH & N. MERIDIAN WICHITA, KANSAS	
SMC Consulting Engineers, P.C. 815 West Main - Oklahoma City, OK 73106 PH: 405-232-7715 Fax: 405-232-7859 KANSAS CERTIFICATE OF AUTHORIZATION NO. E-335 EXP. DEC. 31, 2008	
No. Revision 1 Per City comments DATE: 03/23/07 DRAWN BY: MS PROJECT NO.: 4344.00 ENGINEER: TERENCE L. HAYNES, P.E. #14583	By T.L.H. Date 03/28/07 SCALE: NONE SHEET NO. C-8.1

SMC Consulting Engineers, P.C.
 Oklahoma City, Oklahoma

