

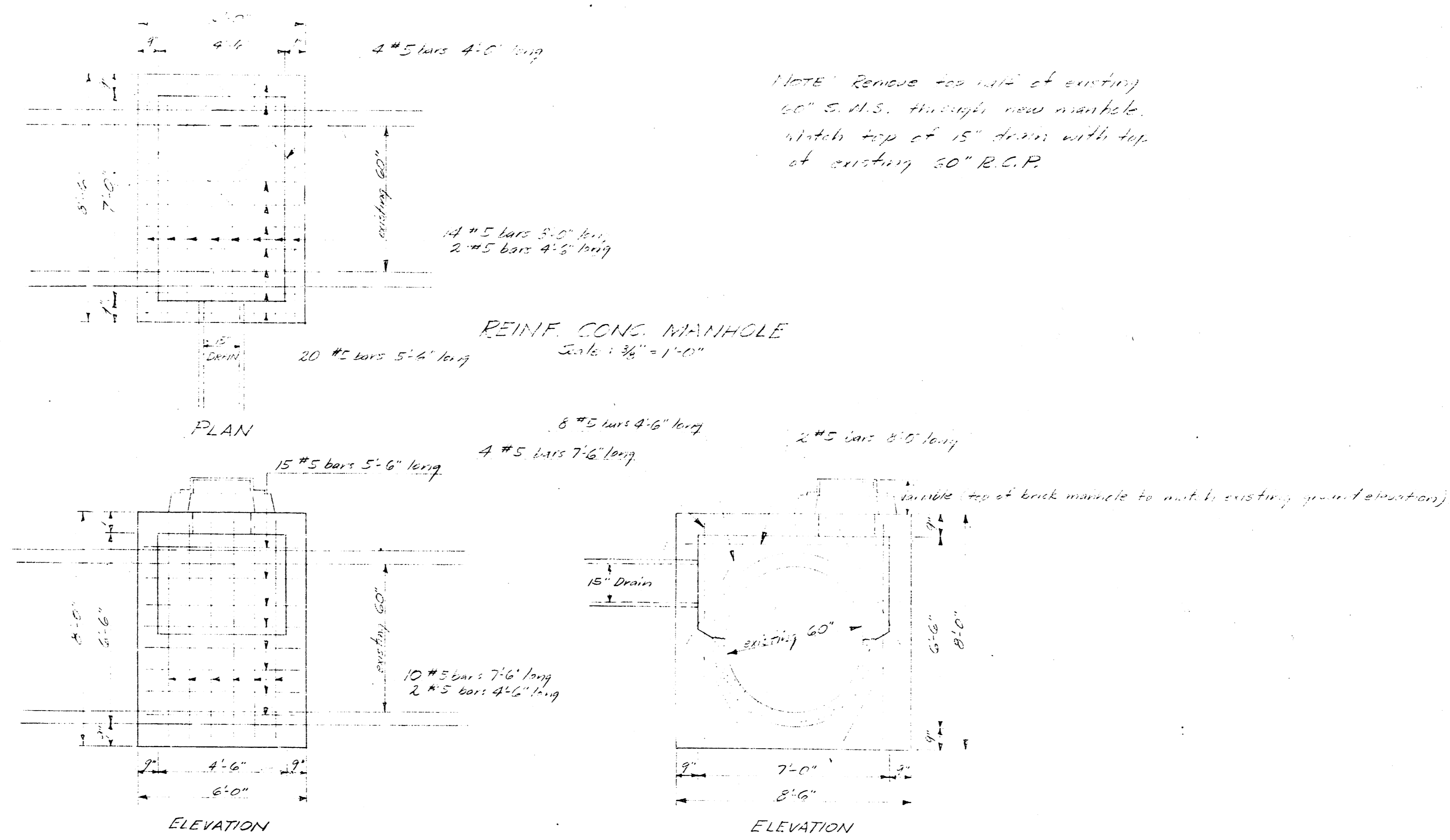
STORM WATER SEWER #33

CITY OF WICHITA, KANSAS

L.K. WHITE, CITY ENGINEER

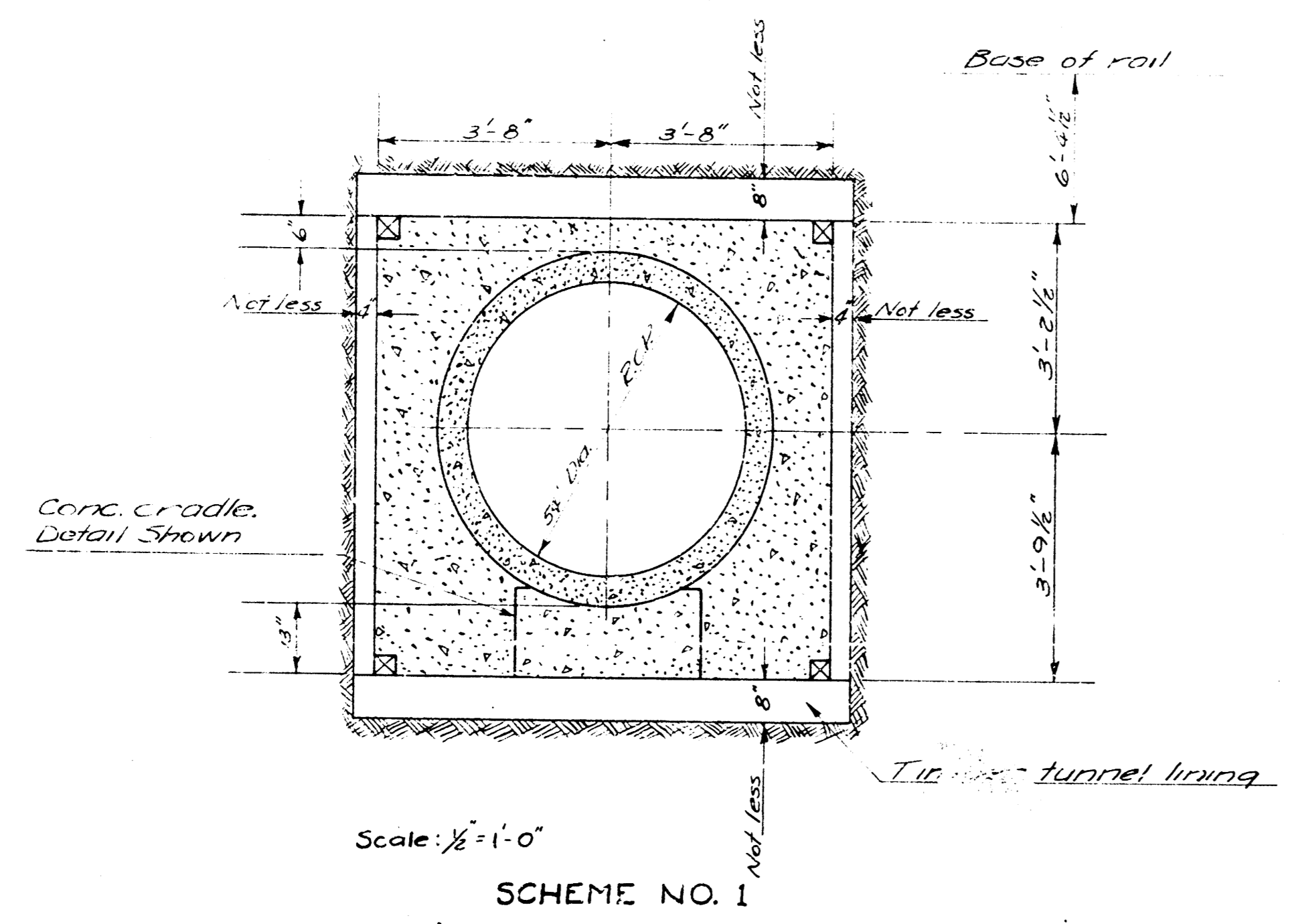
1948

PLAN SCALE - 1" = 100'
 PROFILE SCALE - 1" = 80'

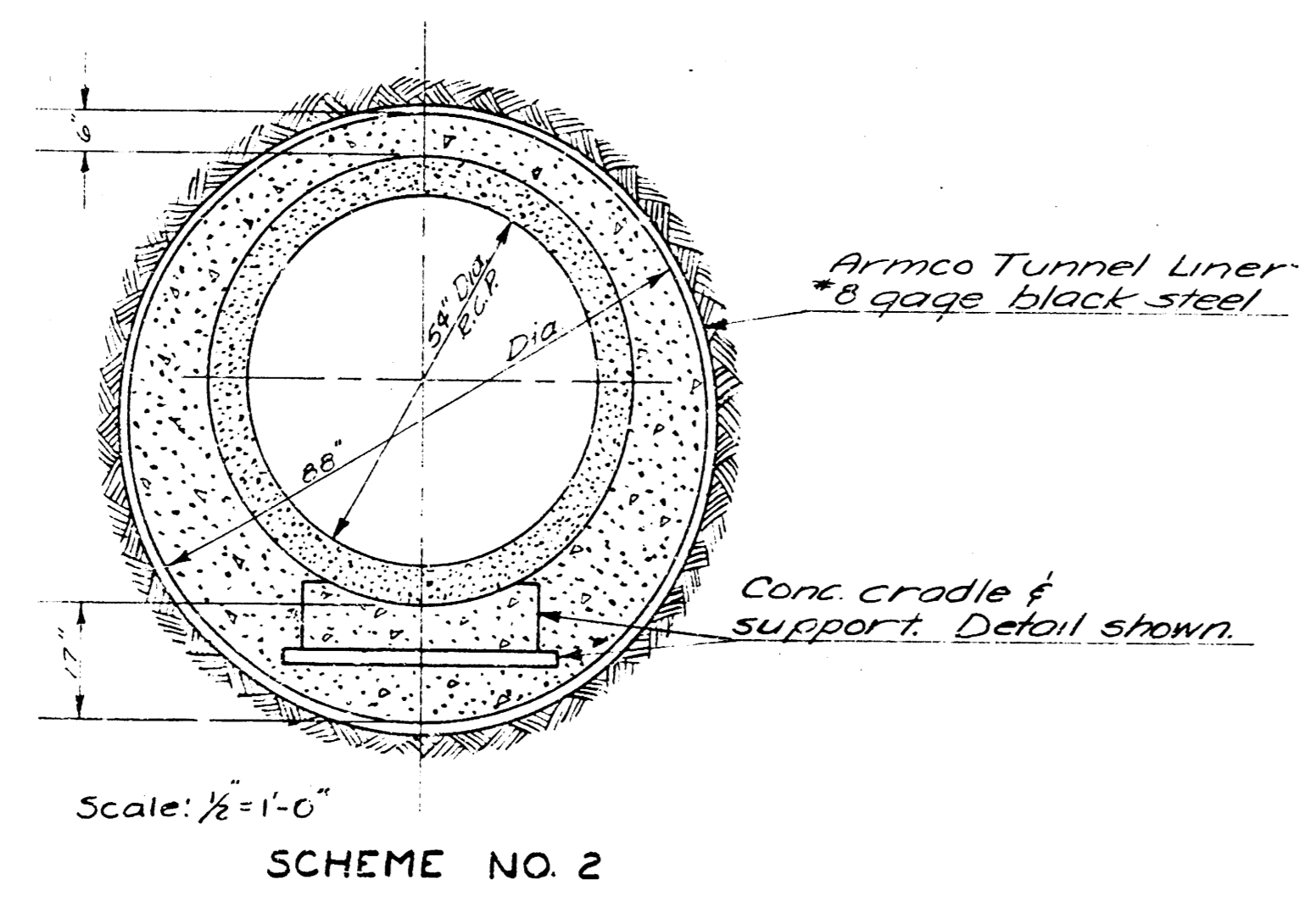


REINFC. CONC. MANHOLE
STORM WATER TOWER NO. 33
1952
PRIVATE STORM DRAIN COMBINED
S.E. OF PAMNEE & ST. FRANCIS

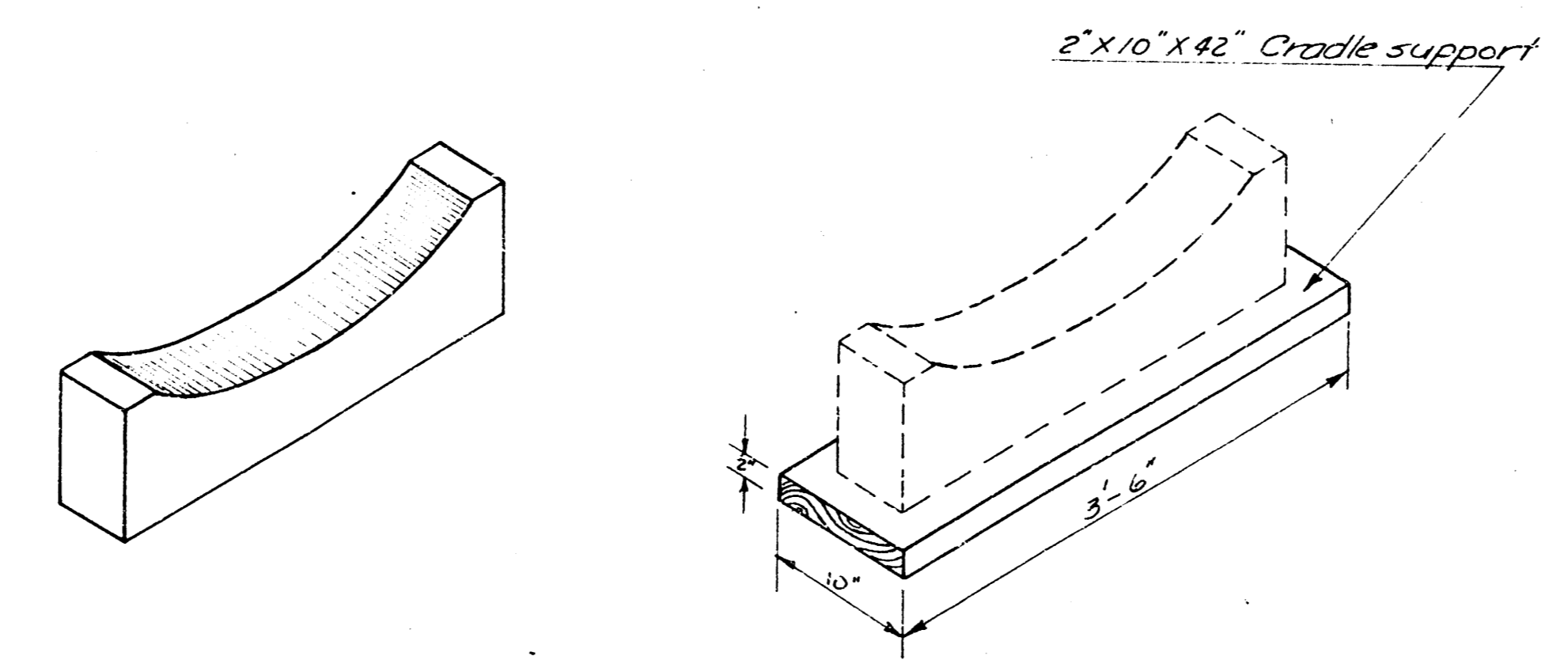
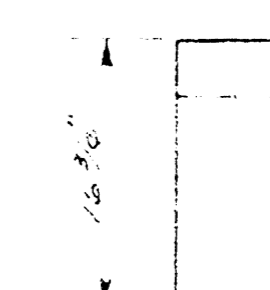
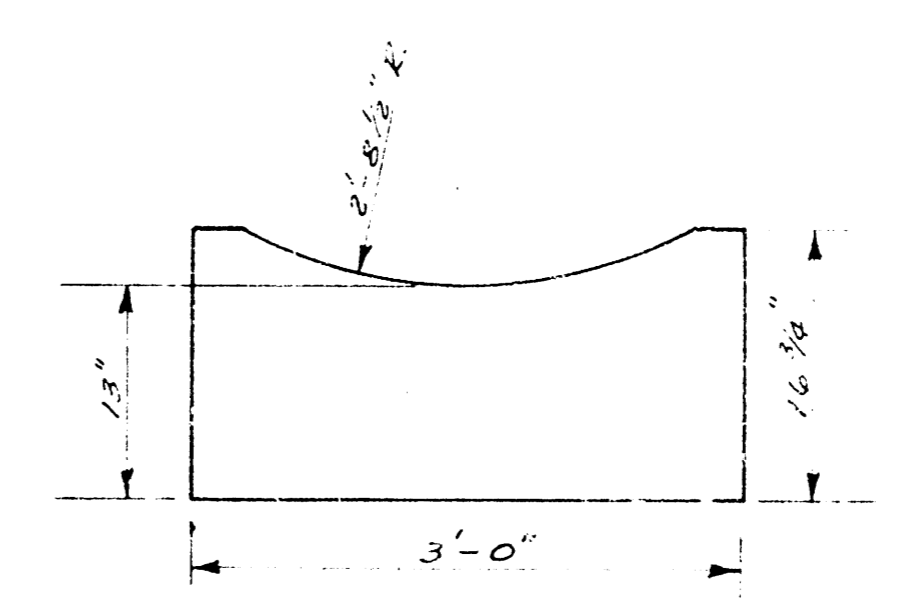
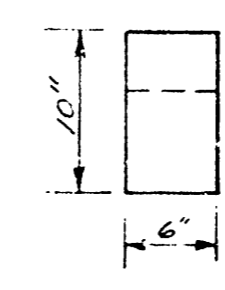
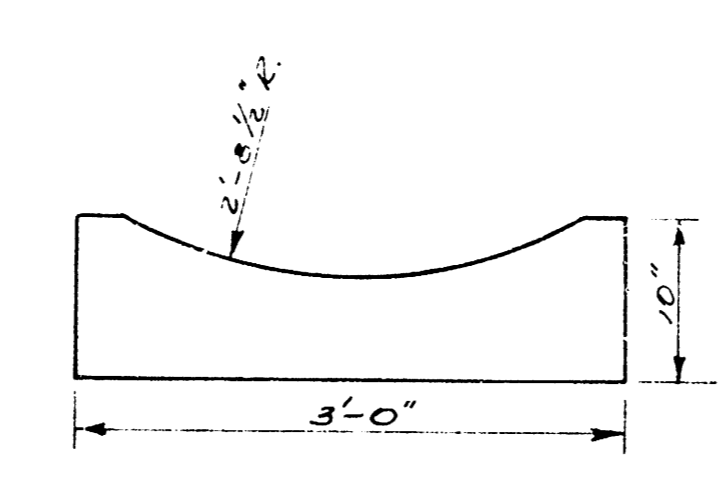
OPTIONAL TUNNELING DETAILS S.W.S. #33



SCHEME NO. 1

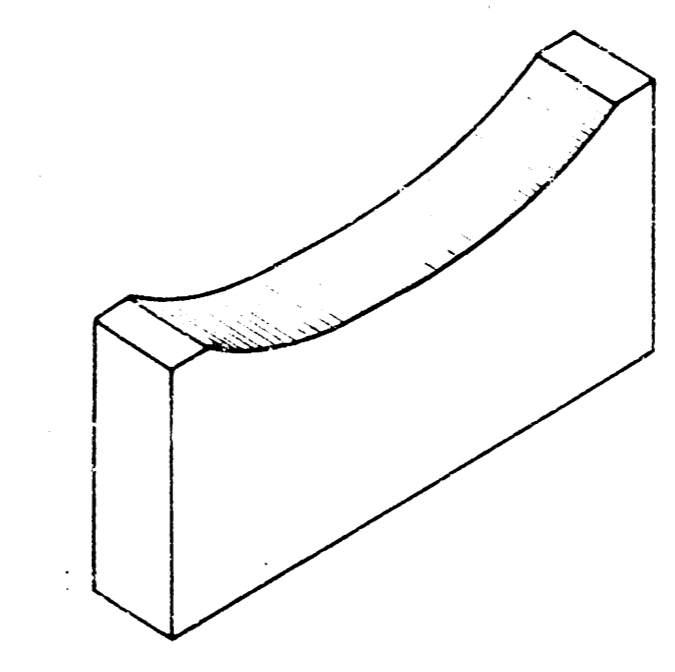


SCHEME NO. 2



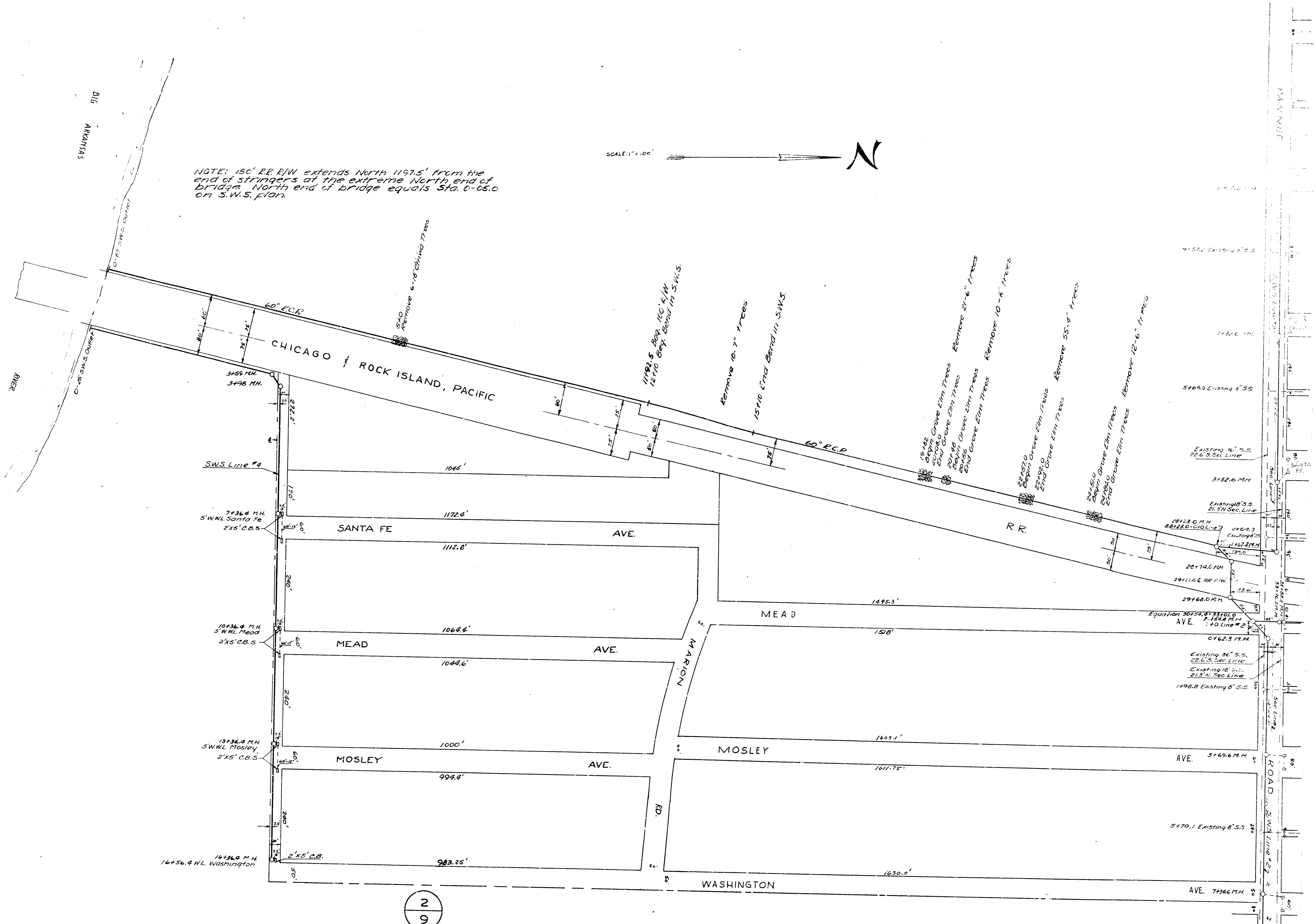
Scale: 1" = 1'-0"

DETAIL OF CRADLE & SUPPORT
FOR SCHEME NO. 2



Scale: 1" = 1'-0"

DETAIL OF CRADLE
FOR SCHEME NO. 1



NOTE: 150' RR R/W extends North 1197.5' from the end of stringers at the extreme North end of bridge. North end of bridge equals Sta. 0+05.0 on S.W.S. plan.

SCALE: 1" = 100'



16136.4 M.H.
16+56.9 W.L. Washington

13+36.4 M.H.
S.W.M.L. Mosley
2'x5' C.B.S.

10+36.4 M.H.
S.W.M.L. Mead
2'x5' C.B.S.

7+36.4 M.H.
S.W.M.L. Santa Fe
2'x5' C.B.S.

3+55 M.H.
3+98 M.H.

2
9

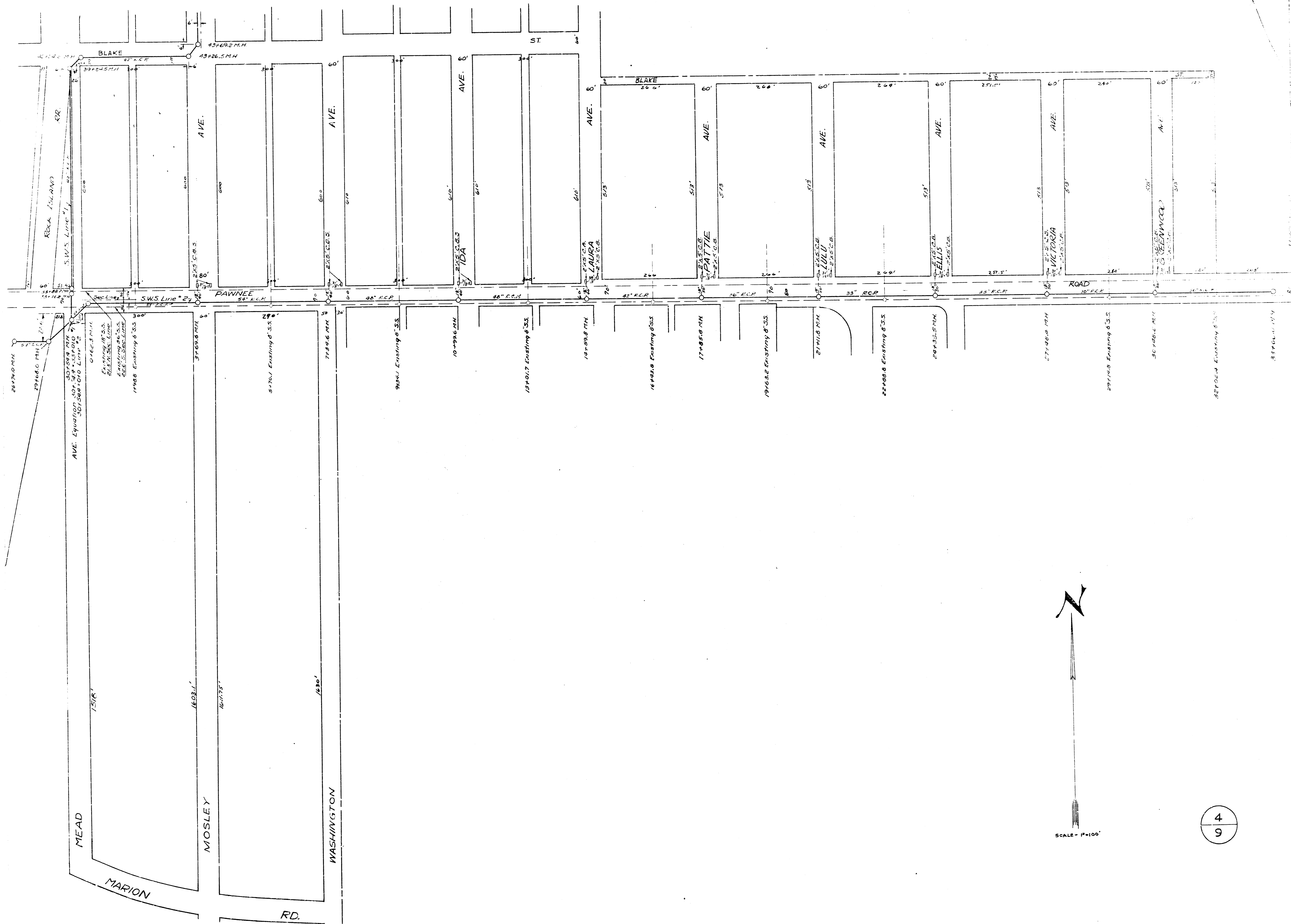
Remove 6"-10" Elm Trees
Remove 10-7" Trees
Remove 15-10' Elm Trees in S.W.S.
Remove 8'-6" Trees
Remove 10'-8" Trees
Remove 55'-4" Trees
Remove 12'-6" Trees

Remove 10'-8" Trees
Remove 55'-4" Trees
Remove 12'-6" Trees

Existing 30' S.S.
256.3 Sec. Line
Existing 16' S.S.
213' Sec. Line
1498.0 Existing 6' S.S.

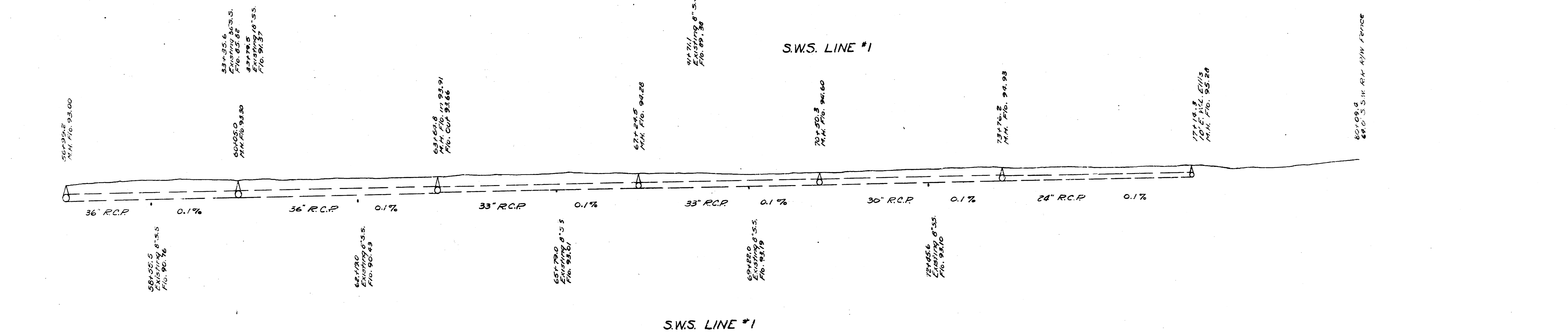
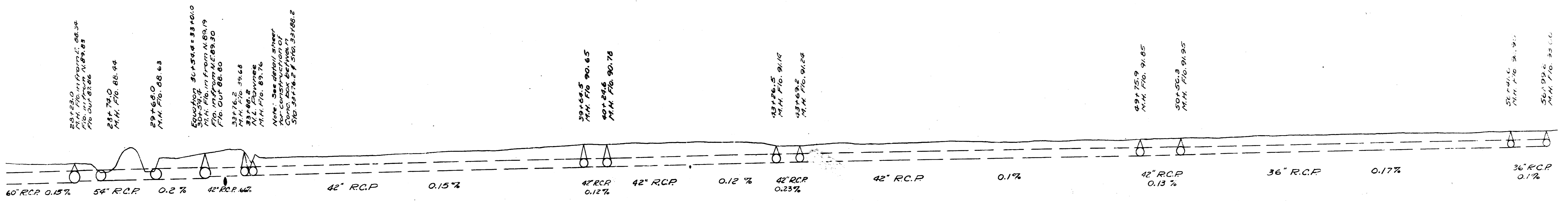
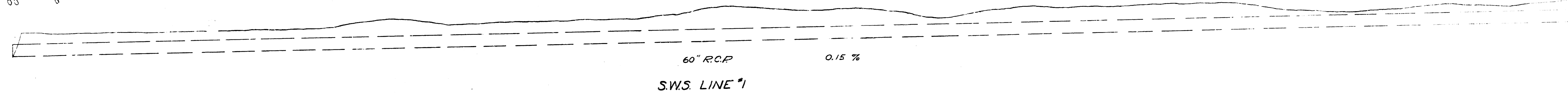
5+70.1 Existing 6' S.S.

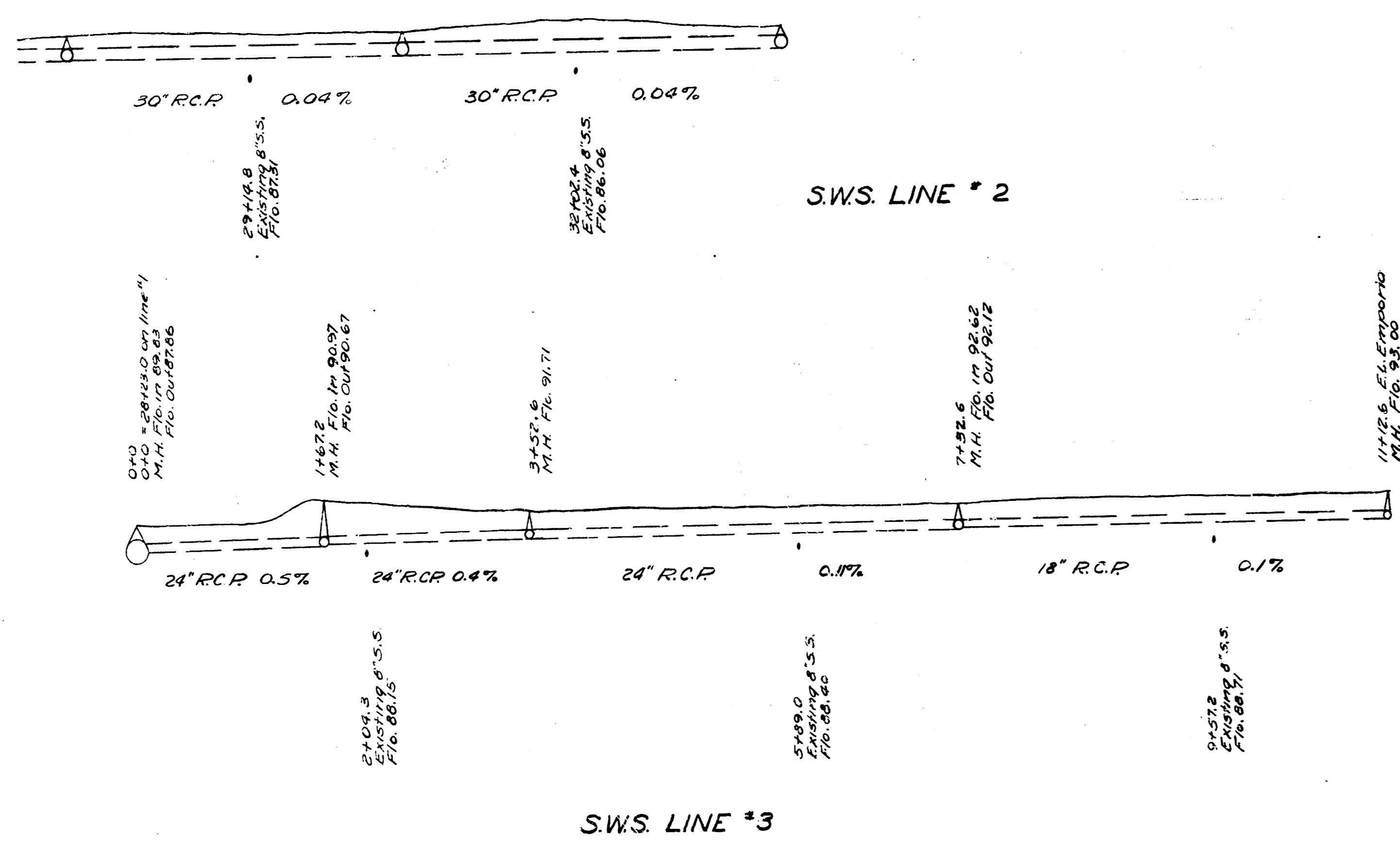
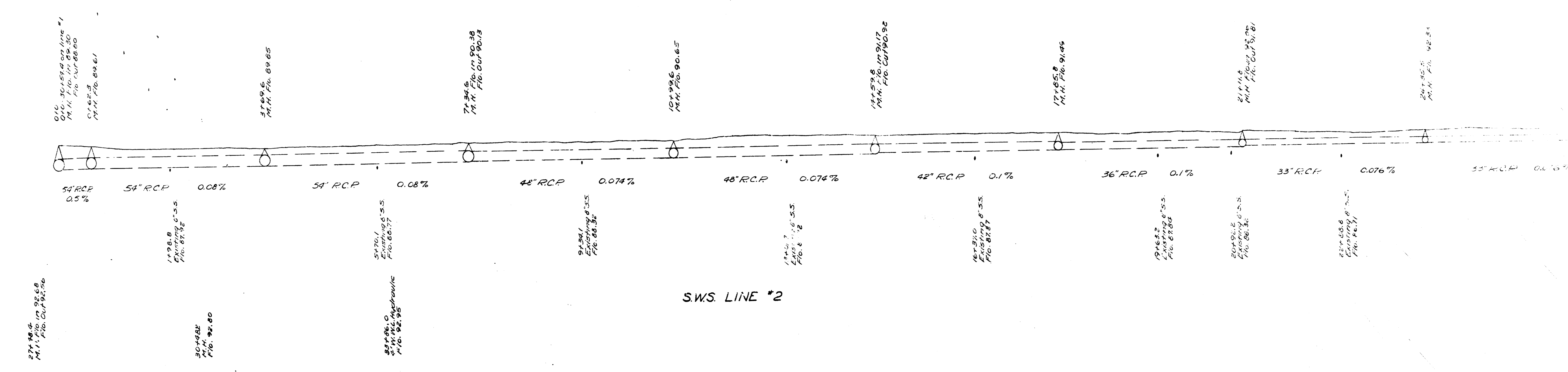
ROAD
S.W.M.L. Line # 2
S.W.M.L. Line # 1



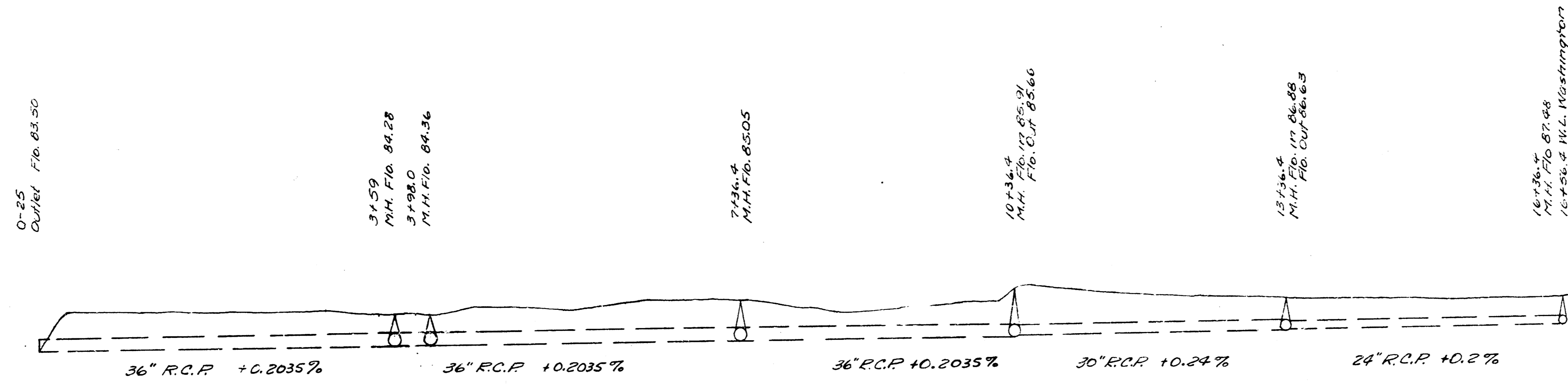
B.M. 88.76 TOP BOLT HEAD N. SIDE W. PILE 11th BENT FROM S. END ROCK ISLAND BRIDGE
 B.M. 98.093 'G' IN GLOBE S. RET. DR. HO. # 2554 S. MEAD
 B.M. 96.97 'G' IN GLOBE N. RET. DR. HO. # 2452 S. MEAD
 B.M. 96.47 'G' IN GLOBE S. RET. DR. HO. # 2258 S. MOSLEY
 B.M. 99.071 'X' ON W. CB. MOSLEY S.L. KINKAID
 B.M. 100.07 'G' IN GLOBE N. CB. CLARK E.L. MOSLEY
 B.M. 101.679 RAILROAD SPIKE IN S.S. 16' ELM S.S. CLARK 30' W. I.D.A.
 B.M. 100.23 E. END CB. RET. NE. CORNER PATTIE & CLARK
 B.M. 96.631 STANDARD S.W. CORNER LEVY & HYDRAULIC
 B.M. 102.315 TOP OF 3rd IRON FENCE POST E. OF NE. CORNER CLARK & MEAD
 B.M. 101.957 S.O. CORNER OLD W.P.A. OUTHOUSE CONC. SEAT CLARK & SANTA FE R.R.

0+00
CUTNER 750.81 3.50

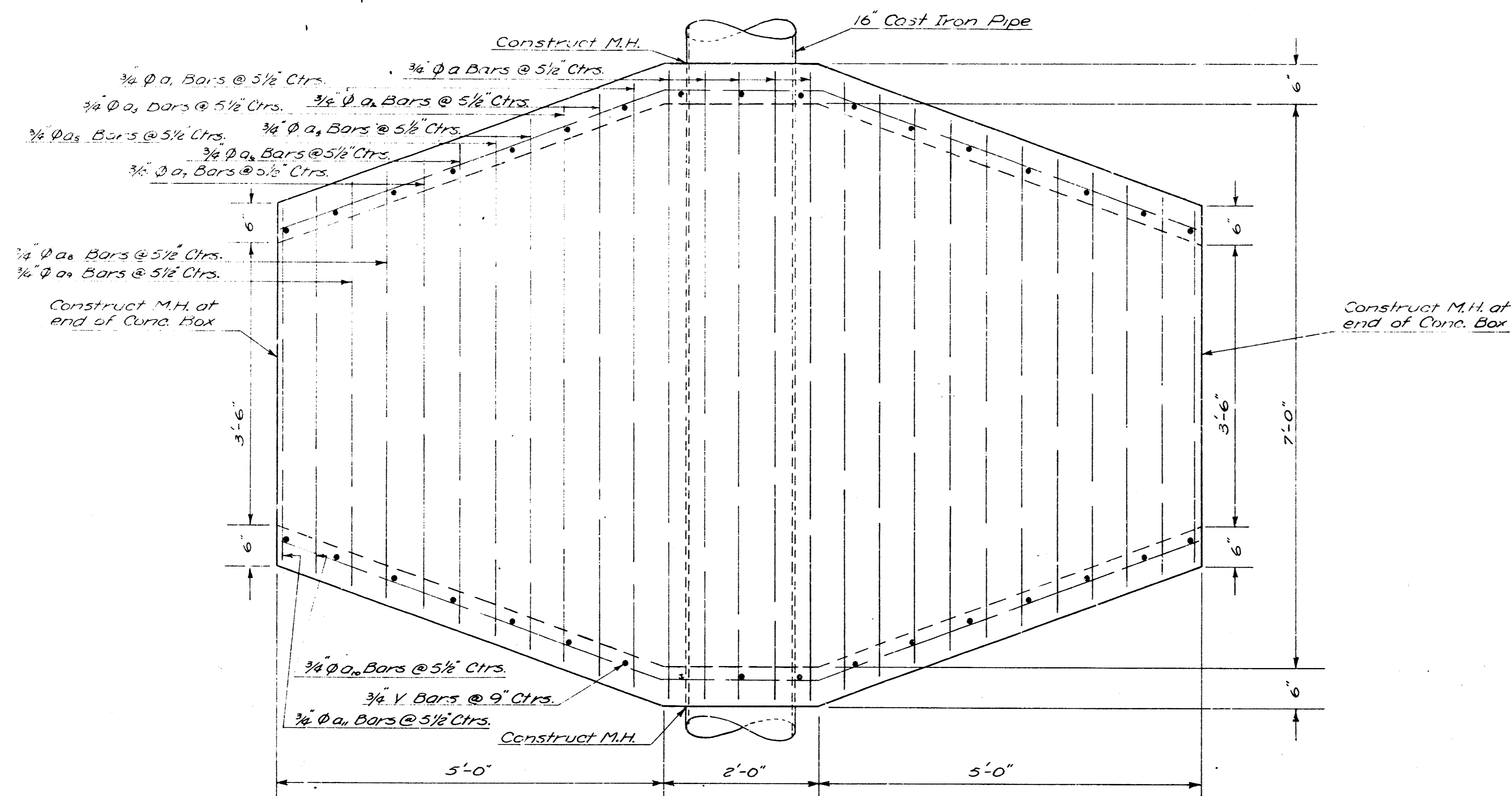




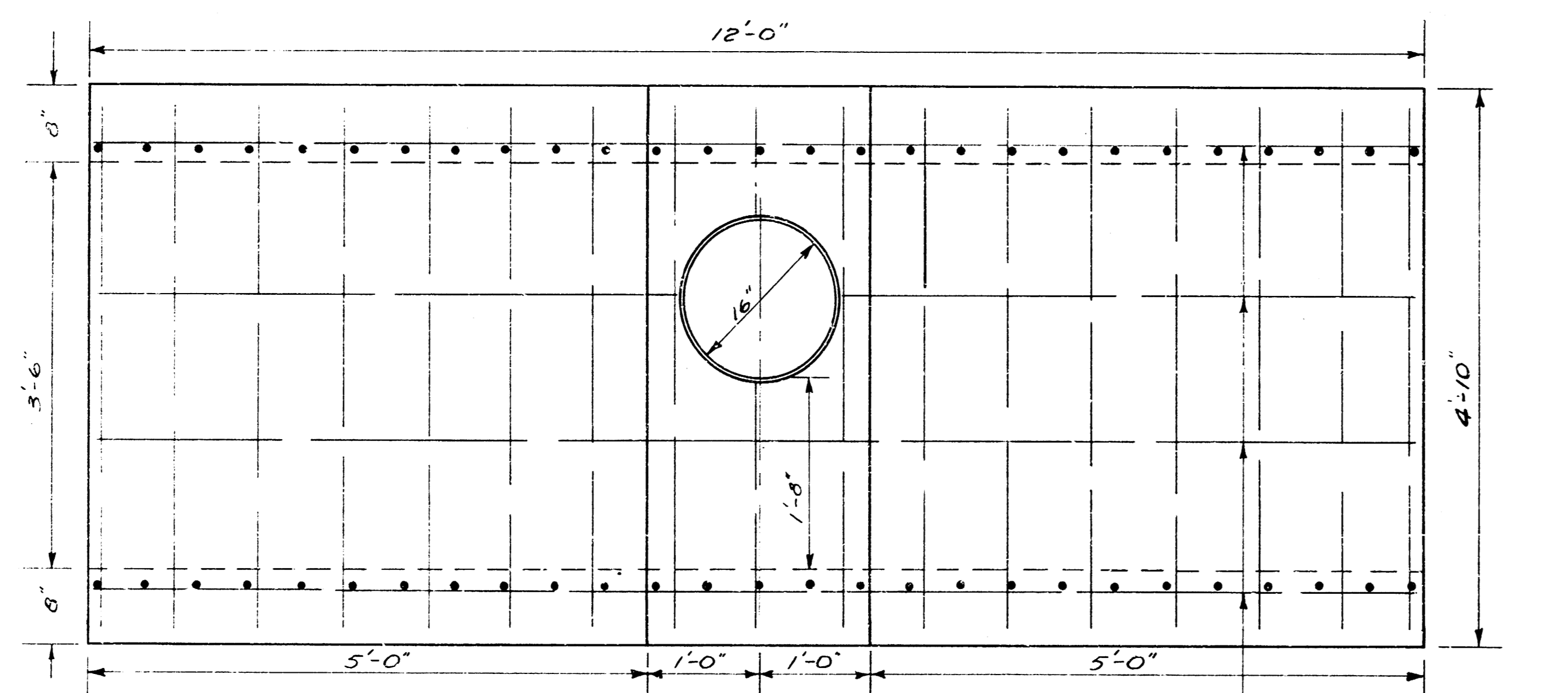
- B.M. 97.62 STANDARD N.E. CORNER WASHINGTON & PAWNEE
- B.M. 98.76 6" IN GLOBE E. CB. LAURA N.L. PAWNEE
- B.M. 96.86 C.R. SPIKE IN P. POLE N. SIDE PAWNEE BET. LULU & ELLIS
- B.M. 97.78 6" IN GLOBE END CB. E. SIDE ELLIS N. SIDE PAWNEE
- B.M. 95.26 N. RIM M.H. 33+02.4 BET. GREENWOOD & HYDRAULIC
- B.M. 99.22 N.W. CORNER WEST CULVERT WING WALL 100' W. ST. FRANCIS N. SIDE PAWNEE



S.W.S. LINE #4



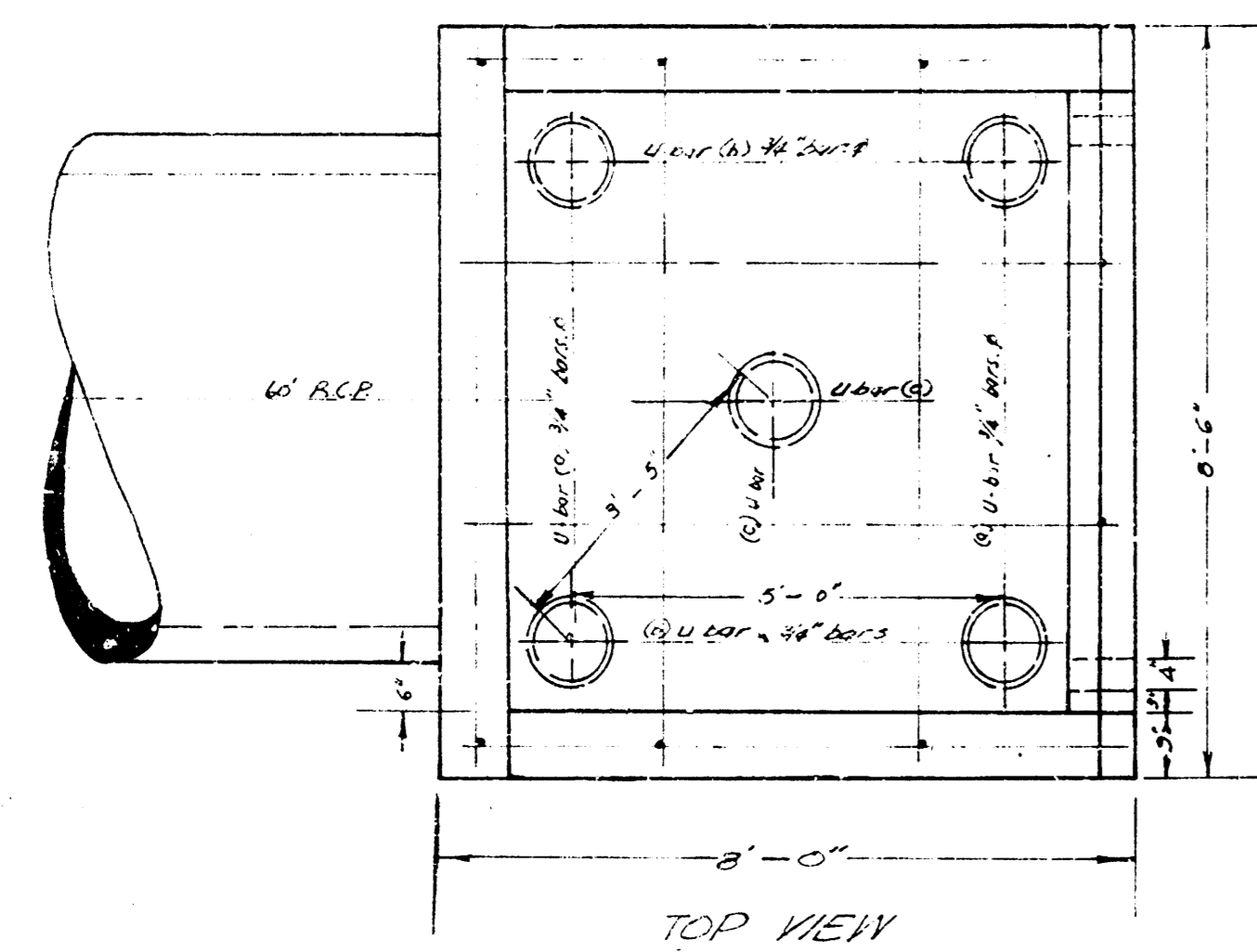
PLAN VIEW OF CONCRETE BOX
Scale: 1"=1'-0"



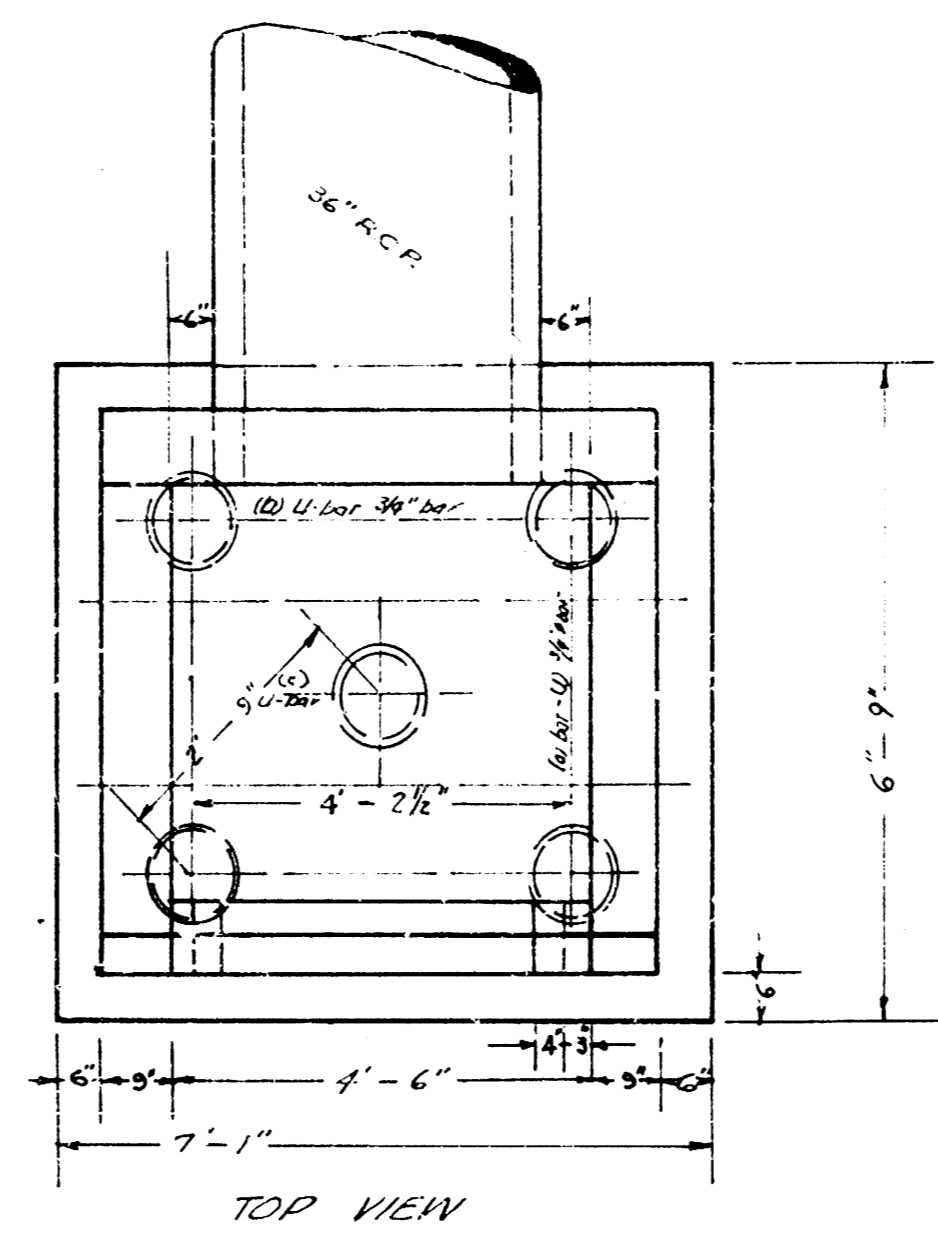
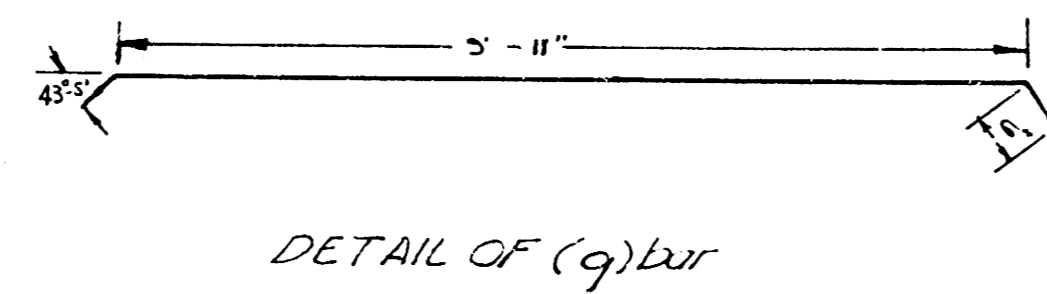
ELEVATION VIEW OF CONCRETE BOX
Scale: 1"=1'-0"

BILL OF MATERIALS												
BAR NUMBER	Q ₁	Q ₂	Q ₃	Q ₄	Q ₅	Q ₆	Q ₇	Q ₈	Q ₉	Q ₁₀	Q ₁₁	Q ₁₂
SIZE	3/4"	3/4"	3/4"	3/4"	3/4"	3/4"	3/4"	3/4"	3/4"	3/4"	3/4"	3/4"
LENGTH	7'-10"	7'-2 1/2"	7'-2 1/2"	6'-7"	6'-7"	6'-3"	5'-11 1/2"	5'-7 1/2"	5'-3 1/2"	4'-11 1/2"	4'-8"	4'-4"
CLASS A CONC. - 5.5 CU. YDS.												
REINF. STEEL - 890.0 LBS.												

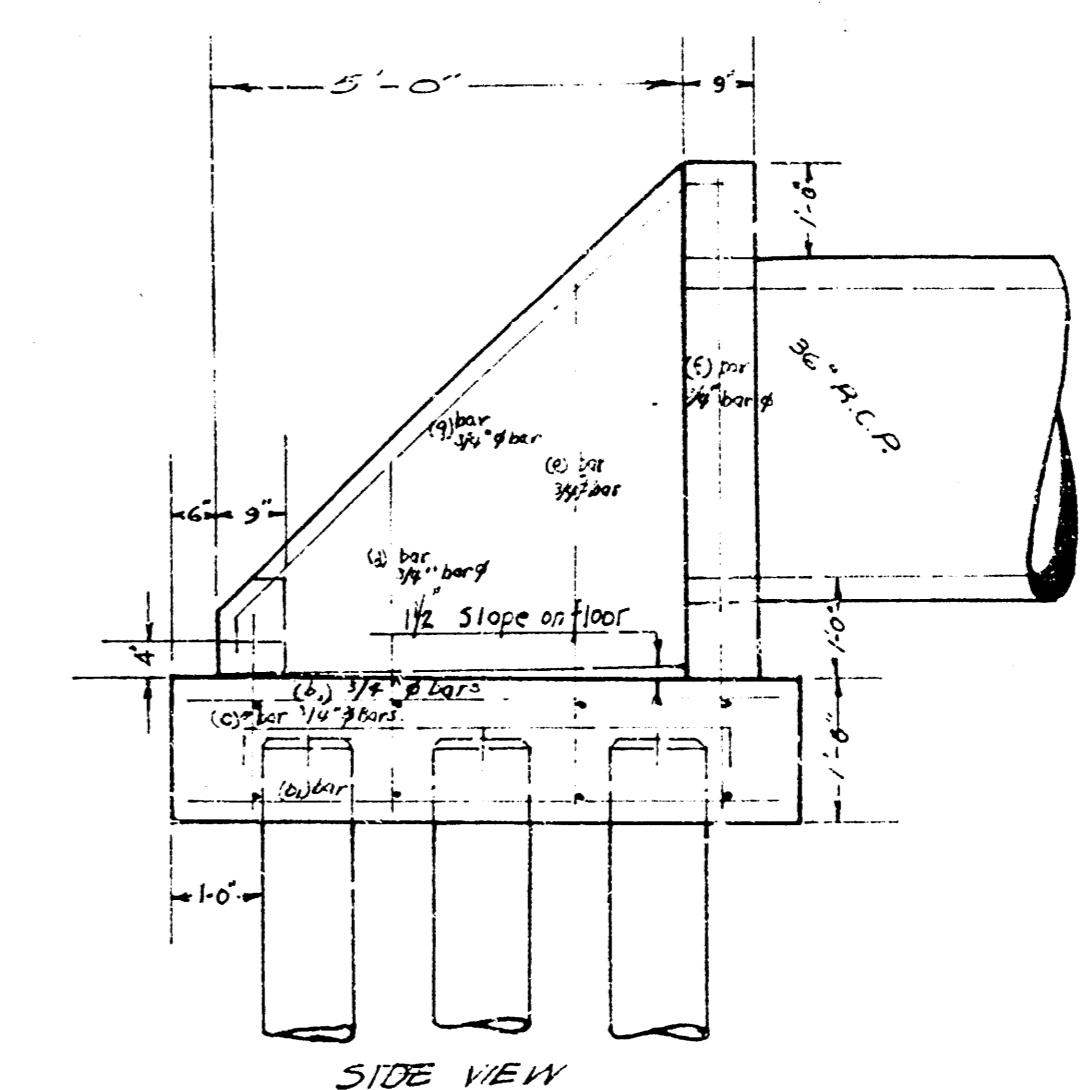
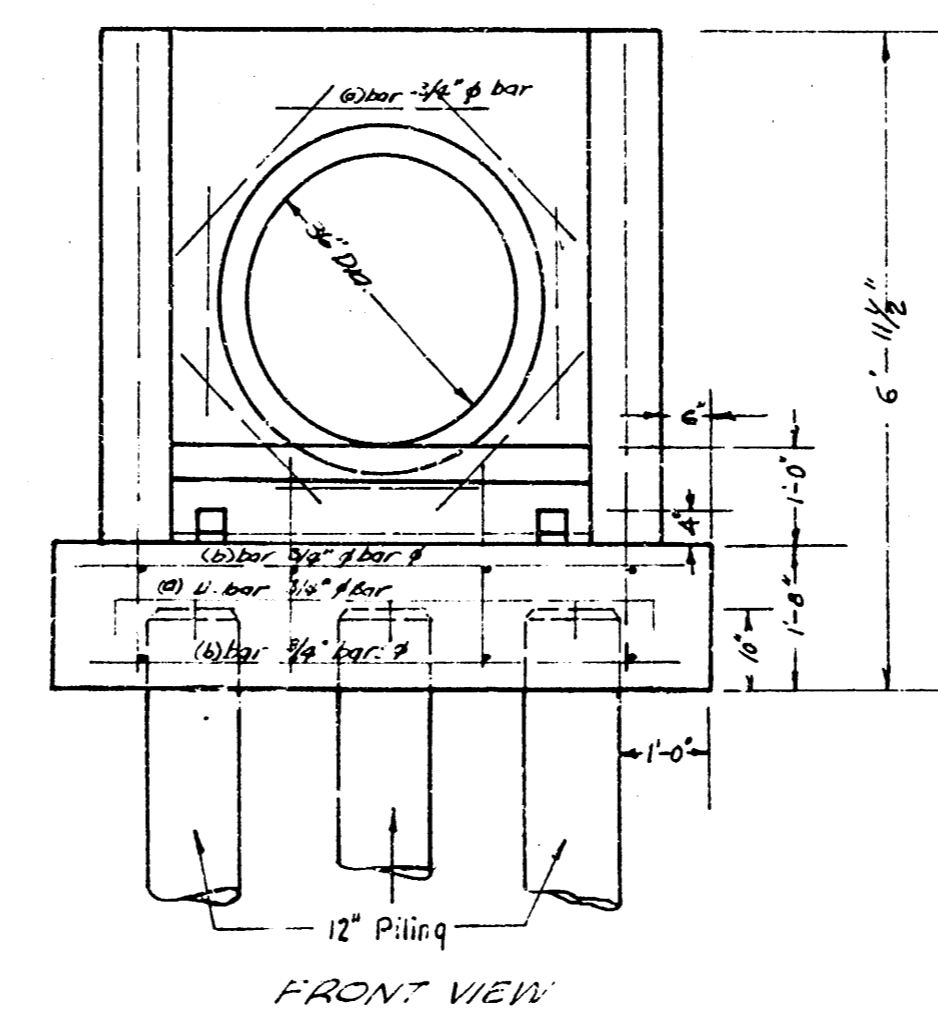
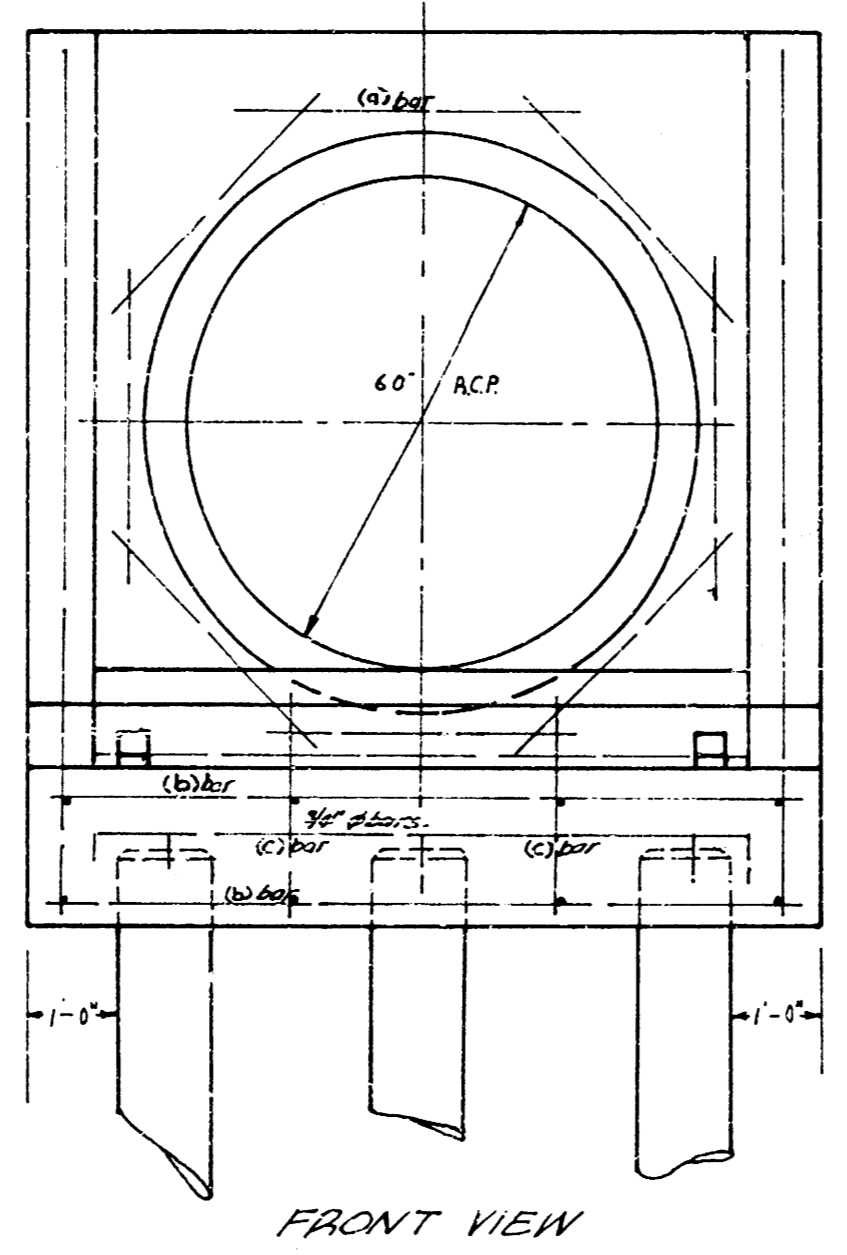
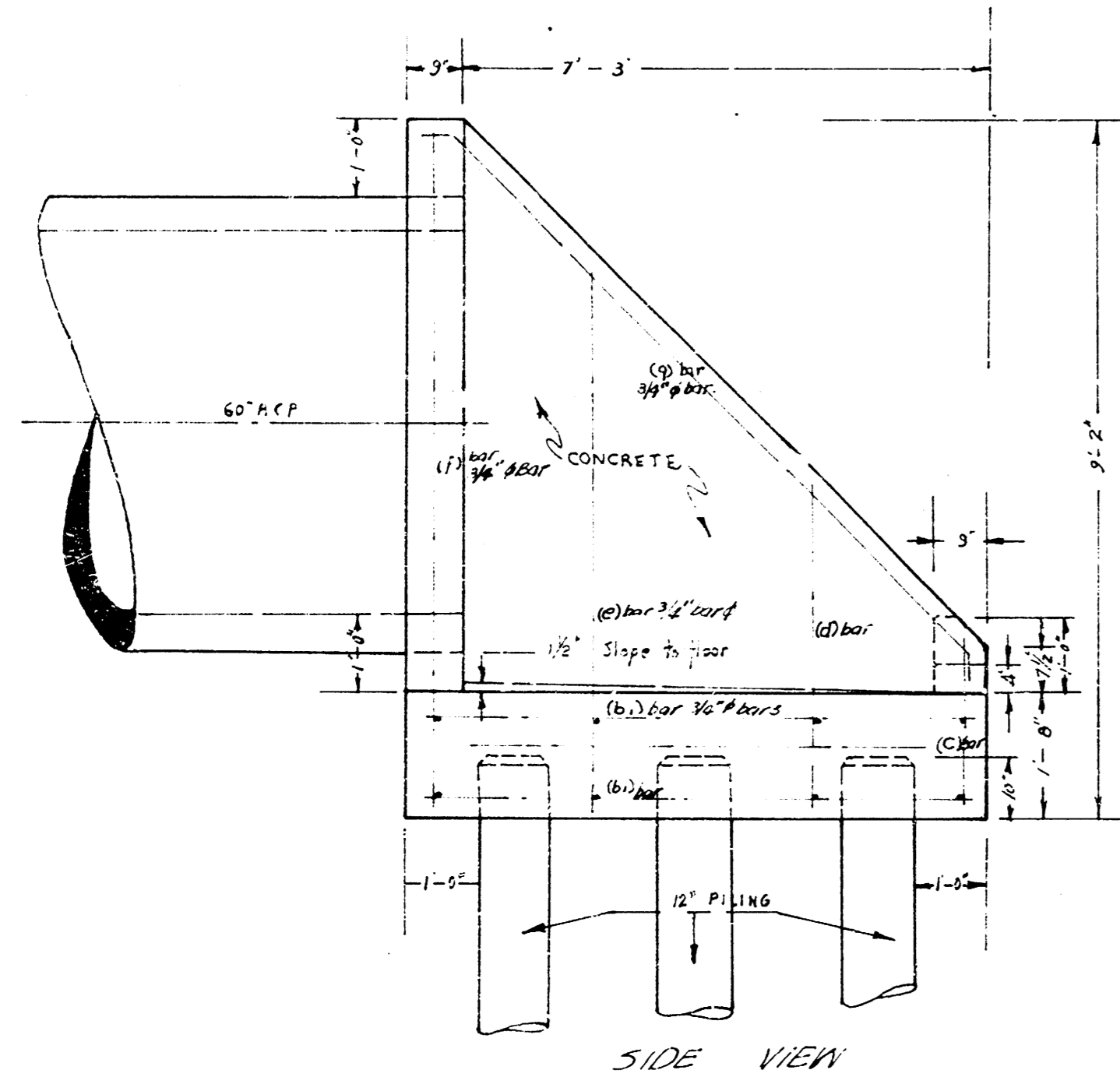
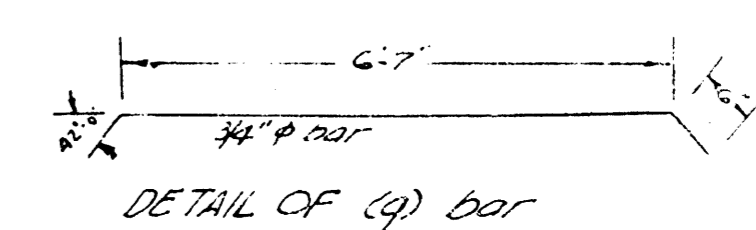
CONCRETE BOX AT 18" S.S.
PAWNEE & MEAD



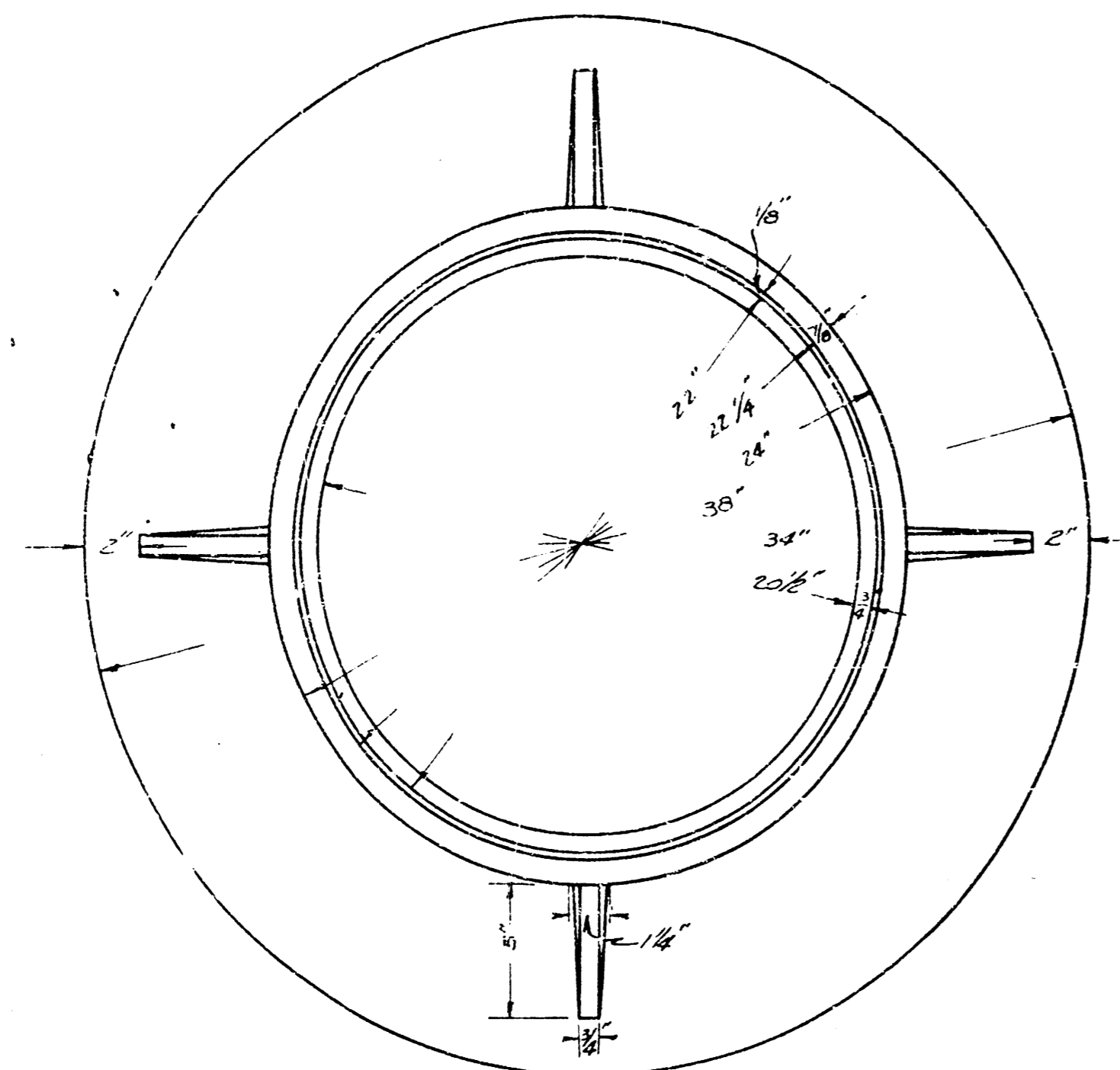
STEEL SPECIFICATIONS										
TYPE	d	b ₁	b ₂	c	d'	e	f	g	h	h'
NO.	3	3	3	2	2	2	2	2	2	2
LGTH	3'-0"	2'-6"	2'-6"	2'-3"	2'-3"	2'-3"	2'-3"	2'-3"	2'-3"	2'-3"
CONCRETE										
TYPE	70 CU. YDS.									
A	PILING									
NO.	5 - 12" X 20"									



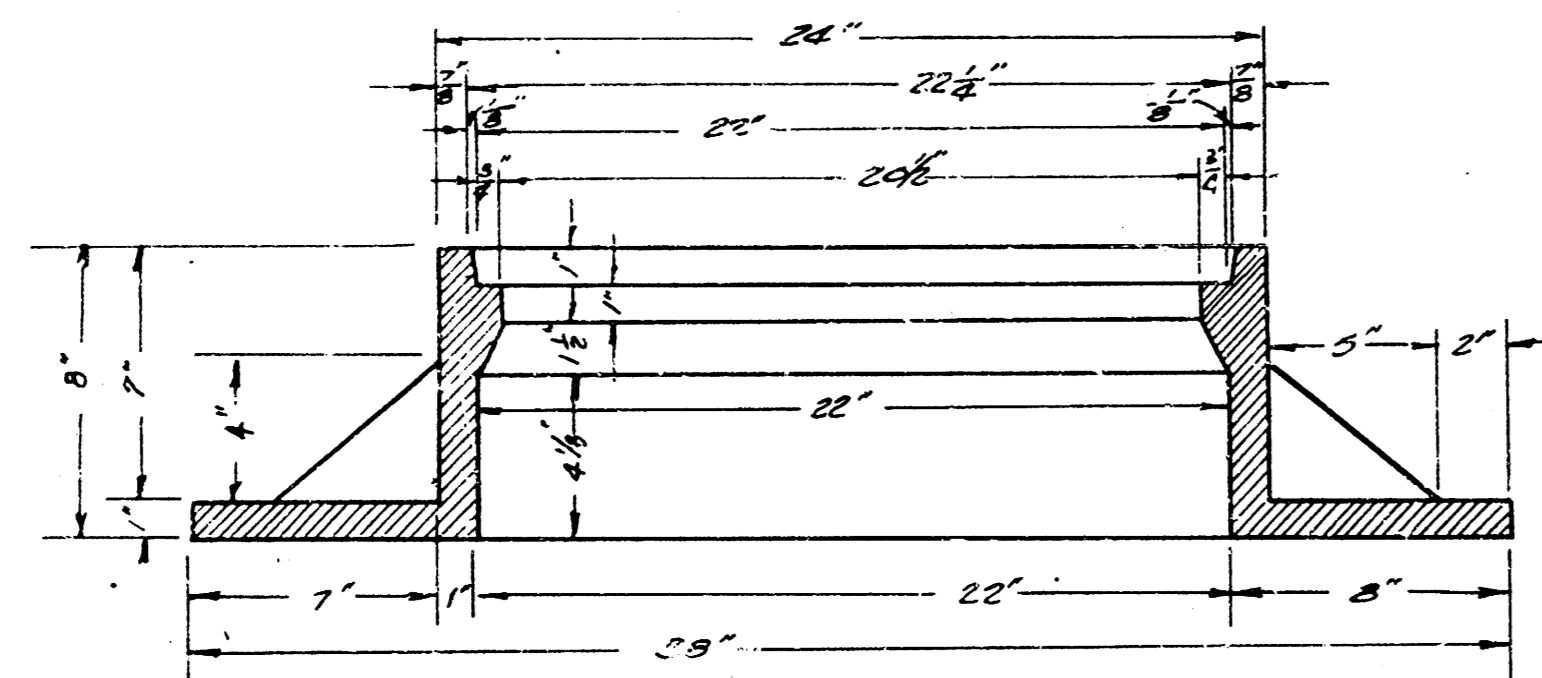
STEEL SPECIFICATION										
TYPE	d	b ₁	b ₂	c	d'	e	f	g	h	h'
NO.	3	3	3	2	2	2	2	2	2	2
LGTH	2'-6"	2'-6"	2'-6"	2'-3"	2'-3"	2'-3"	2'-3"	2'-3"	2'-3"	2'-3"
CONCRETE										
TYPE	50 CU. YDS.									
A	PILING									
NO.	5 - 12" X 20"									



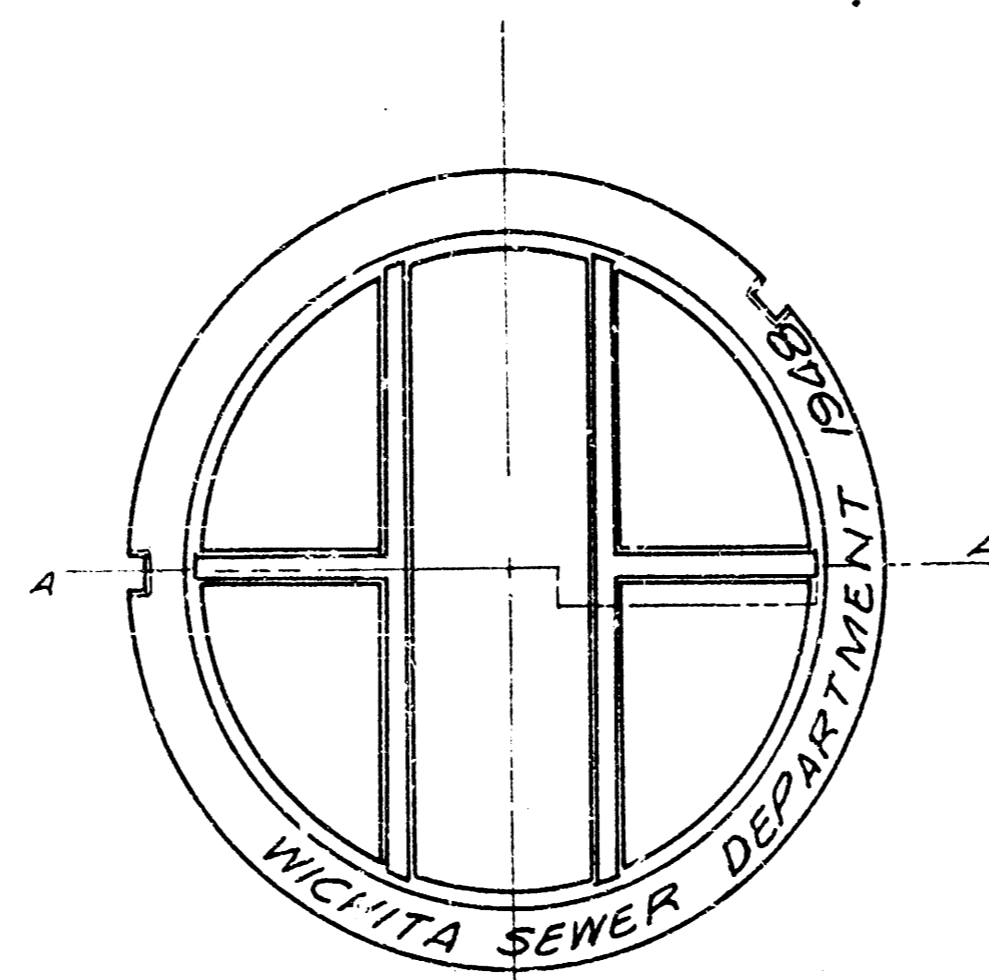
DETAIL OF HEADWALLS
 IN CONNECTION WITH STORM WATER
 SEWER NUMBER 33.
 WICHITA, KANSAS
 E. D. WHITE CIV. ENGINEER
 AUGUST 1918 SCALE 1/4" = 1'-0"



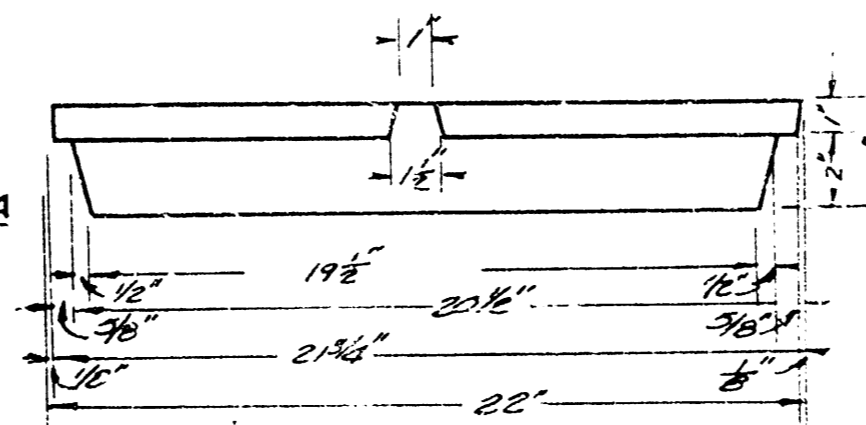
TOP VIEW OR PLAN OF
MANHOLE RING
SCALE: 3/16" = 1'-0"



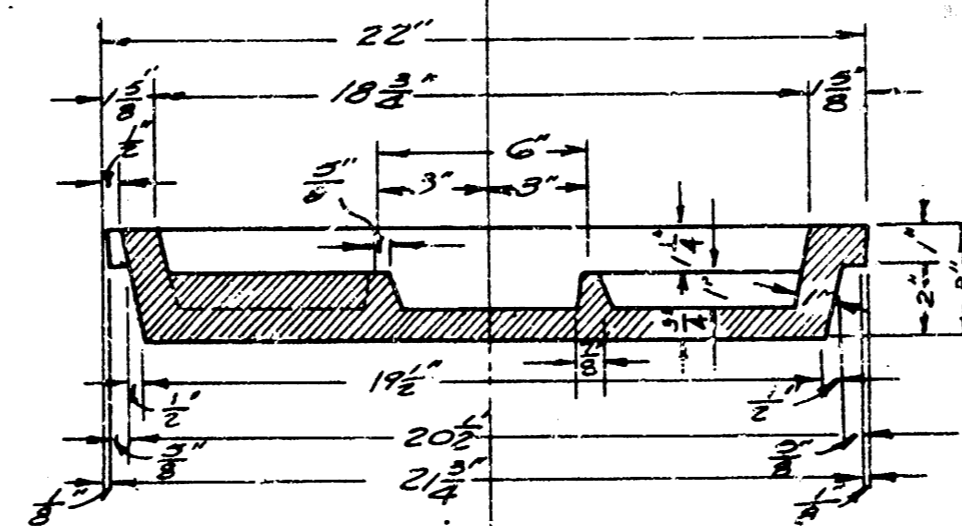
VERTICAL CROSS-SECTION OF MANHOLE RING.
SCALE: 3/16" = 1'-0"



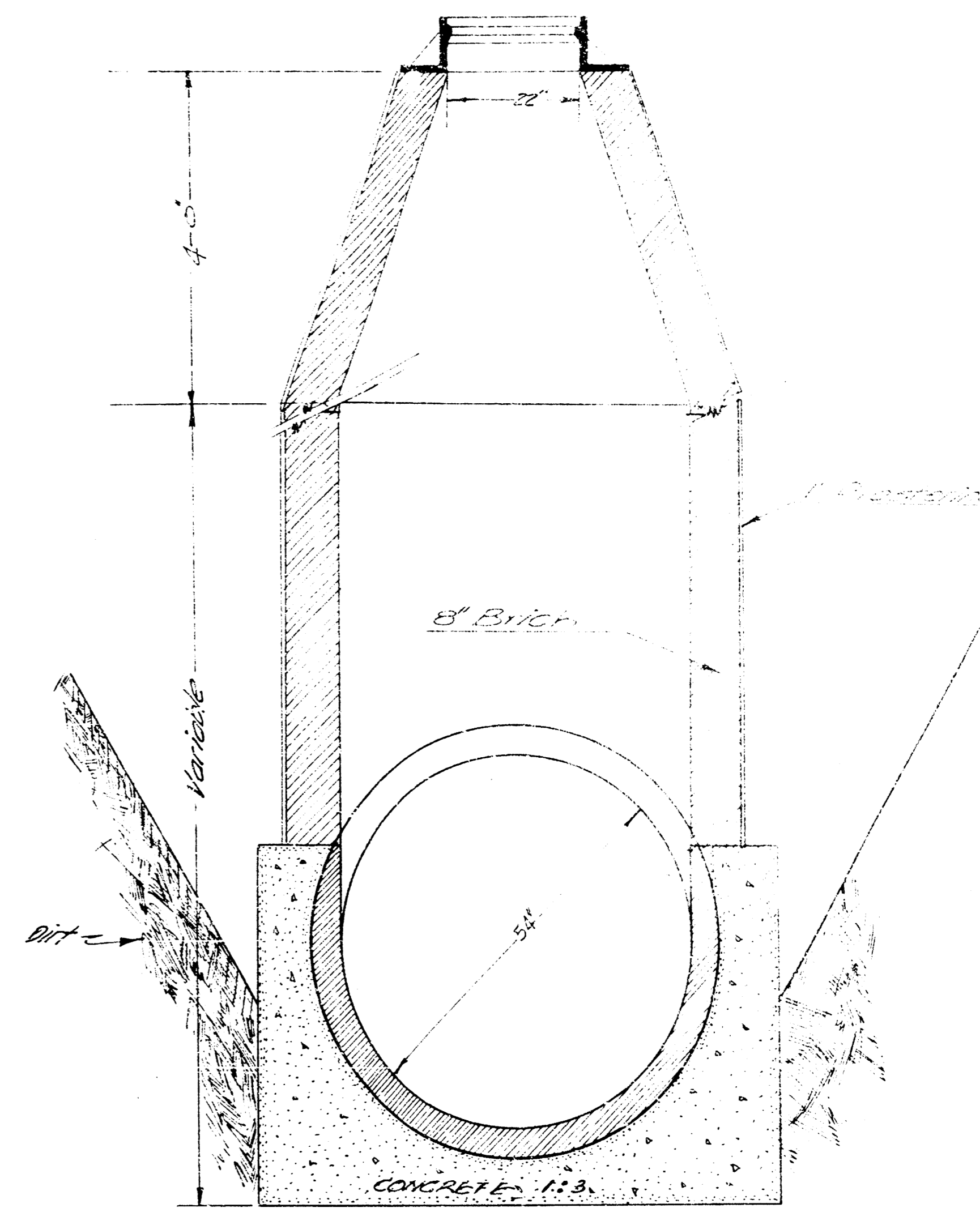
TOP VIEW OR PLAN OF
MANHOLE COVER.
DATE TO BE CHANGED TO CORRESPOND WITH
CURRENT YEAR.
SCALE: 3/16" = 1'-0"



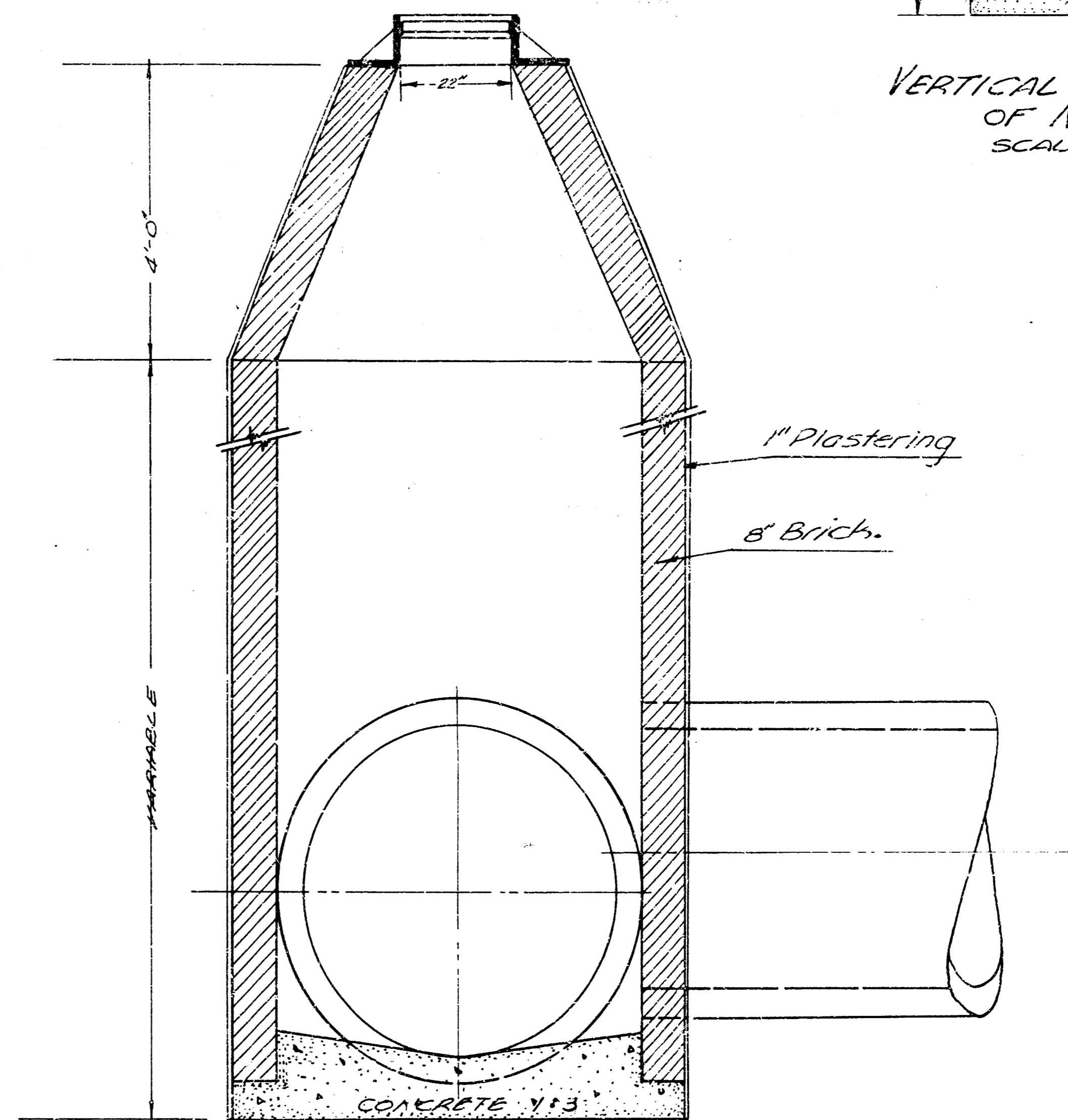
SIDE VIEW OR ELEVATION
OF MANHOLE COVER,
SHOWING DIMENSIONS OF
LIFTING NOTCH.
SCALE: 3/16" = 1'-0"



VERTICAL CROSS-SECTION A-A, OF COVER,
SHOWING DEPTH OF LIFTING NOTCH.
COVER TO BE FILLED FLUSH WITH ASPHALT.
SCALE: 3/16" = 1'-0"



VERTICAL CROSS-SECTION
OF MANHOLE
SCALE: 3/16" = 1'-0"



VERTICAL CROSS-SECTION
OF MANHOLE.
SCALE: 3/16" = 1'-0"

STANDARD MANHOLE DETAIL

STORM WATER SEWER # 33

L. K. WHITE

1948

CITY ENGINEER.