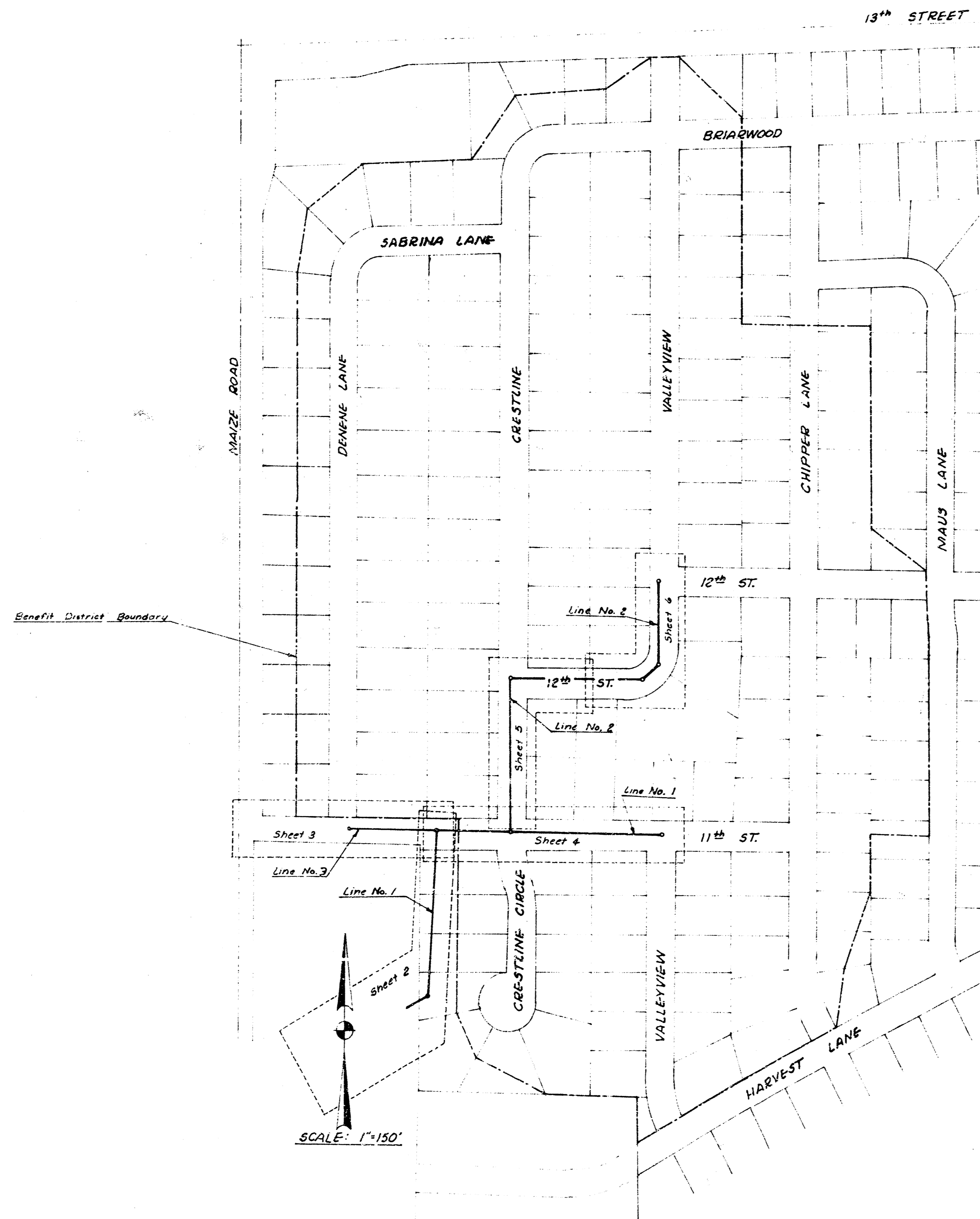


STORM WATER SEWER NO. 99

CITY OF WICHITA, KANSAS

R. W. LINN, CITY ENGINEER



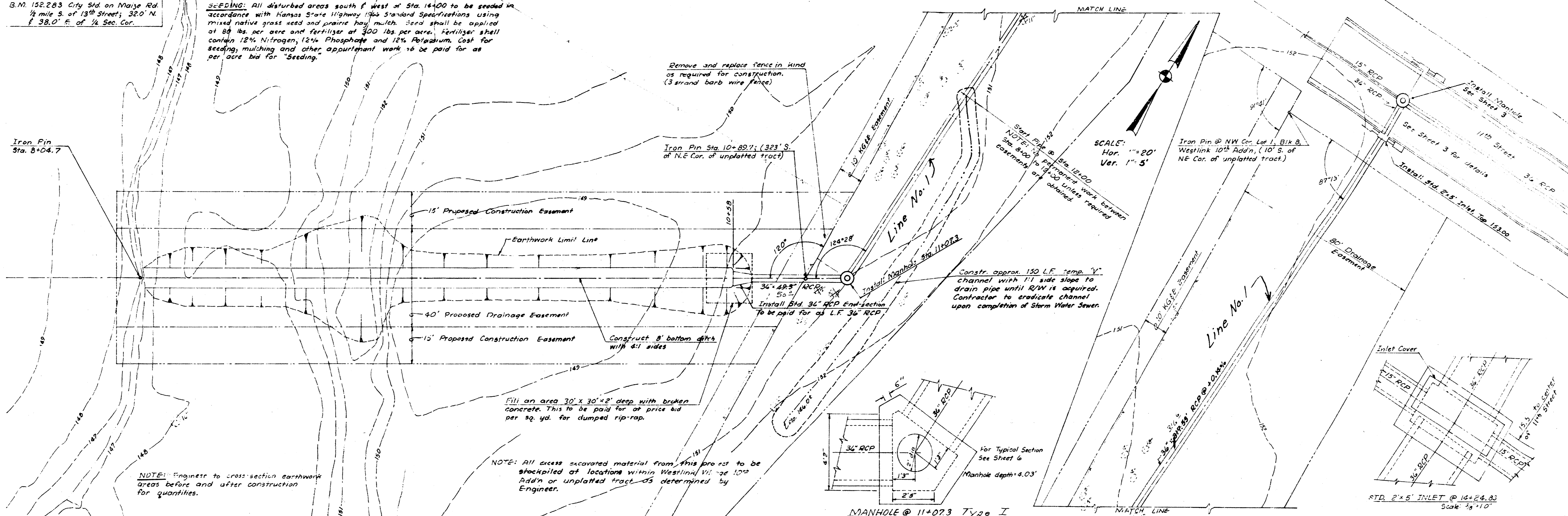
PROJECT NO. DBKA 572071

DATE: May 11, 1933

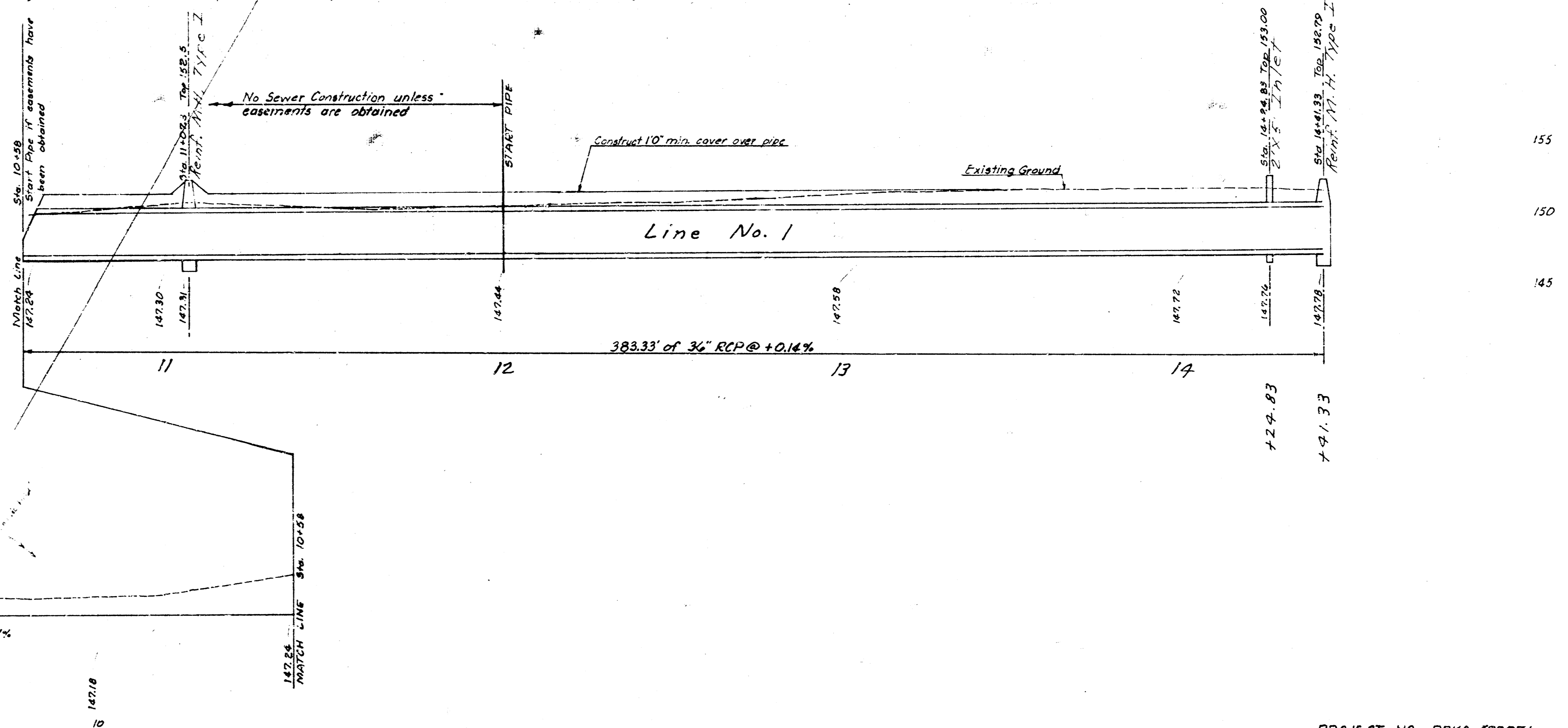
As Built, Final Plan
R-110

S.M. 152283 City Std. on Marje Rd.
 1/4 mile S. of 13th Street, 320' N.
 of 38.0' E. of 1/4 Sec. Cor.

SEEDING: All disturbed areas south of west of Sta. 14+00 to be seeded in accordance with Kansas State Highway Dept. Standard Specifications using mixed native grass seed and prairie hay mulch. Seed shall be applied at 80 lbs. per acre and fertilizer at 500 lbs. per acre. Fertilizer shall contain 12% Nitrogen, 12% Phosphate and 12% Potassium. Cost for seeding, mulching and other appurtenant work to be paid for as per state bid for "Seeding."

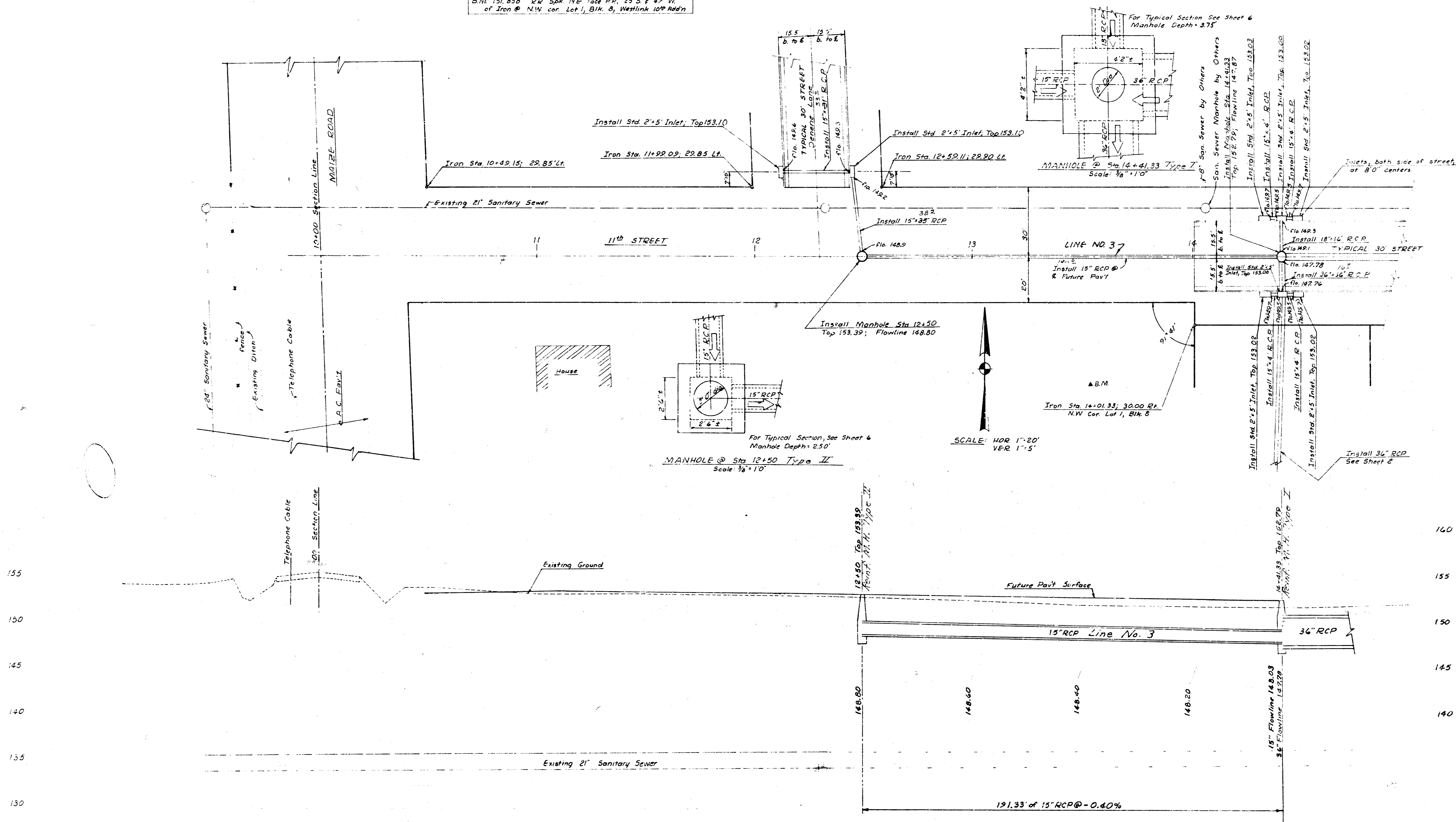


Channel Excavation = 520' C.Y. + 10' = 512 C.Y.
 * Note: Includes 140 C.Y. for temp. channel



JPL 10/27/04 10:15 AM

B.M. 151.850 2" Spk NE face RR, 25' S of 47' W of Iron @ NW cor. Lot 1, Blk. 8, Westlink 10th addn



155
150
145
140
135
130

160
155
150
145
140

750

13

750

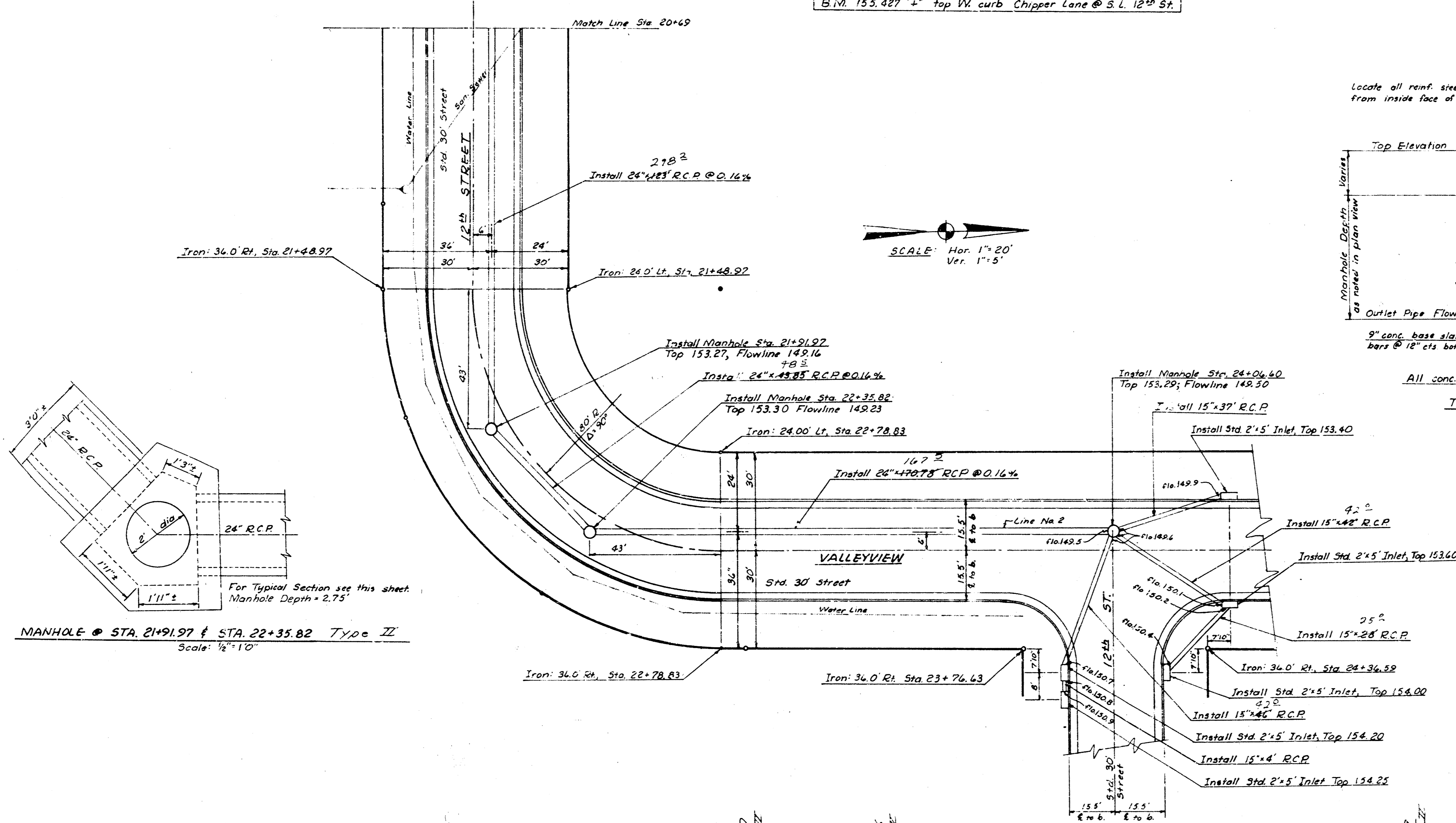
19

STORM WATER SEWER #99

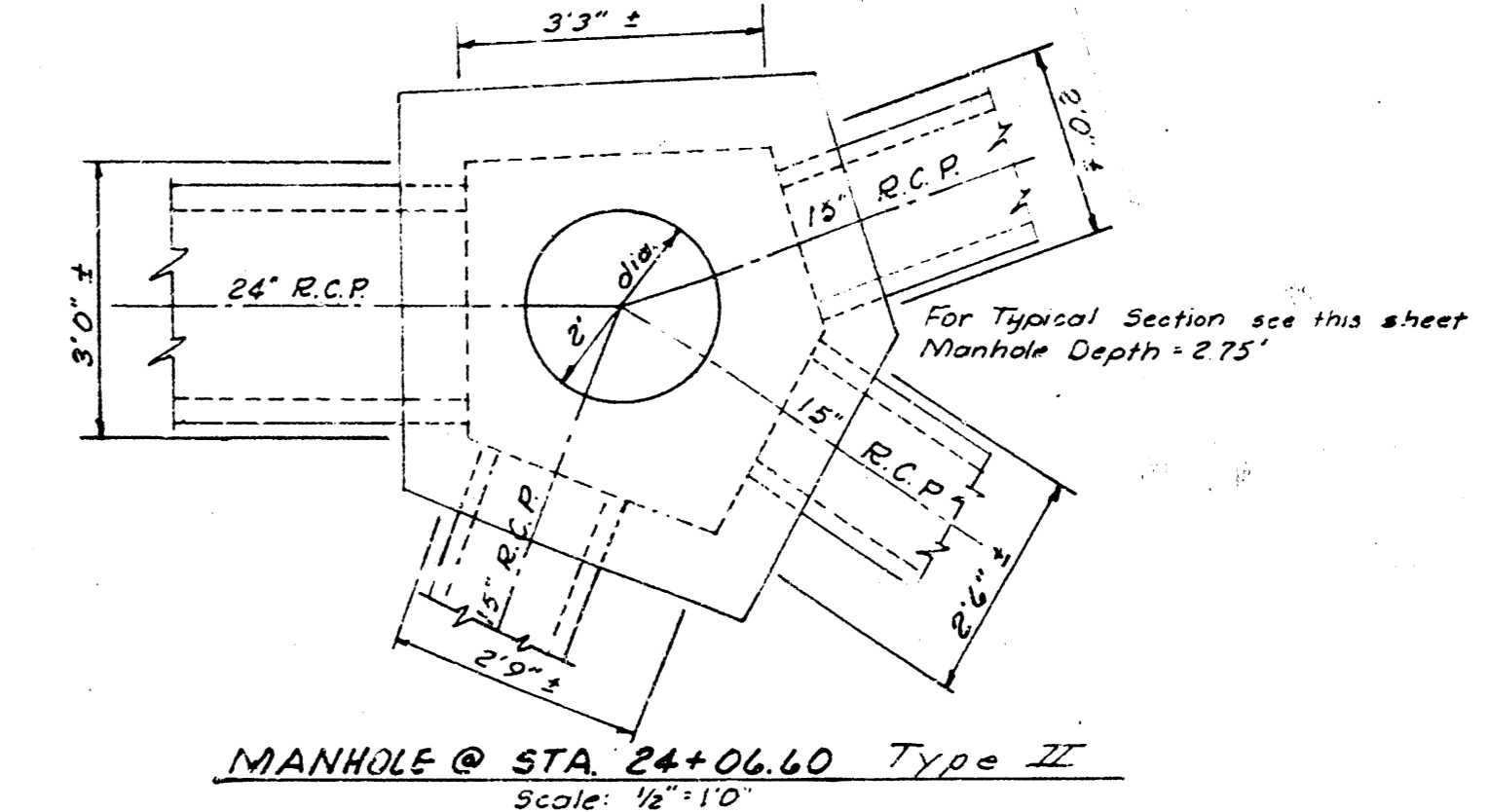
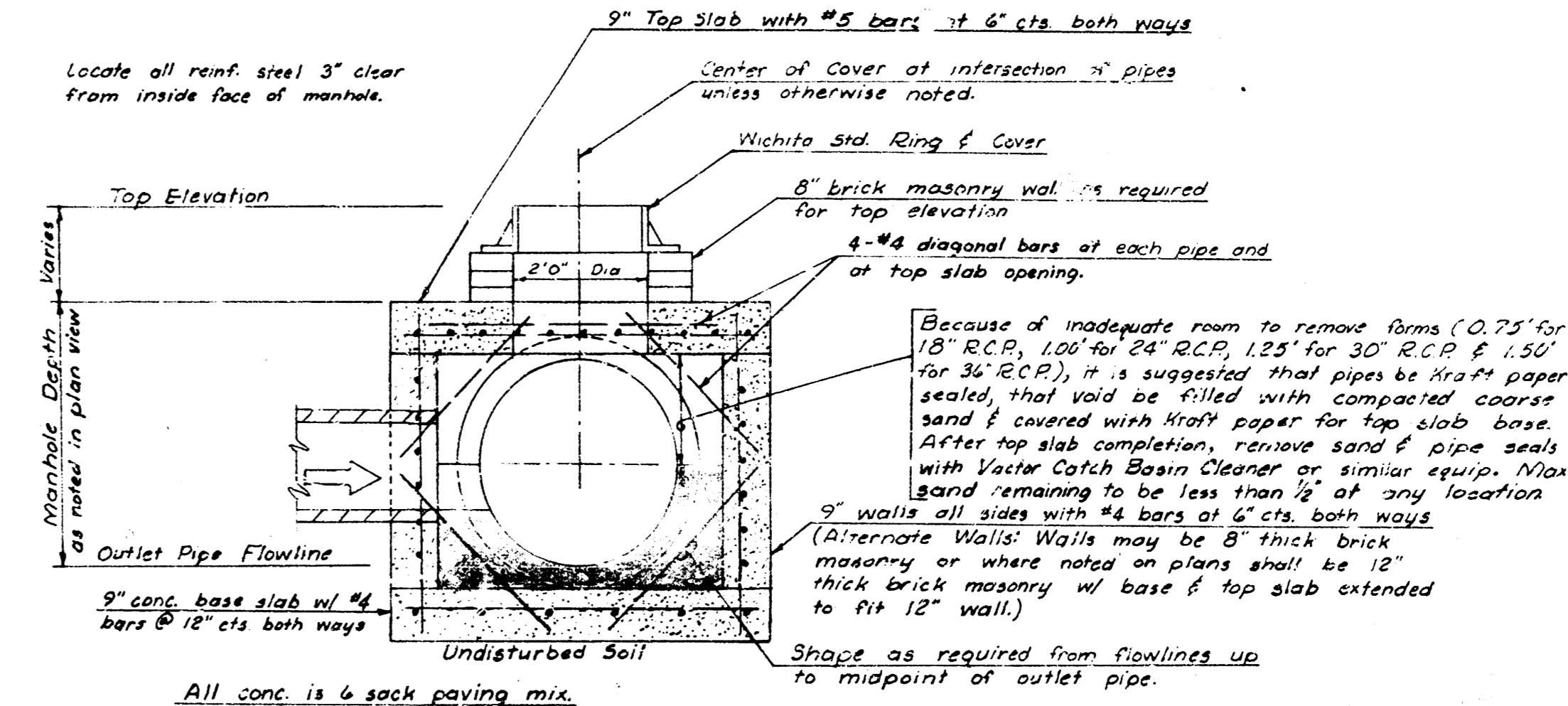
1-47-33

PROJECT NO. DBA 572071
Sheet 3 of 7

B.M. 153.427 4" top VV curb Chipper Lane @ S.L. 12th St.



SCALE: Hor. 1"=20'
Ver. 1"=5'



MANHOLE @ STA. 21+31.97 & STA. 22+35.82 Type II
Scale: 1/8"=1'-0"

MANHOLE @ STA. 24+04.60 Type II
Scale: 1/8"=1'-0"

