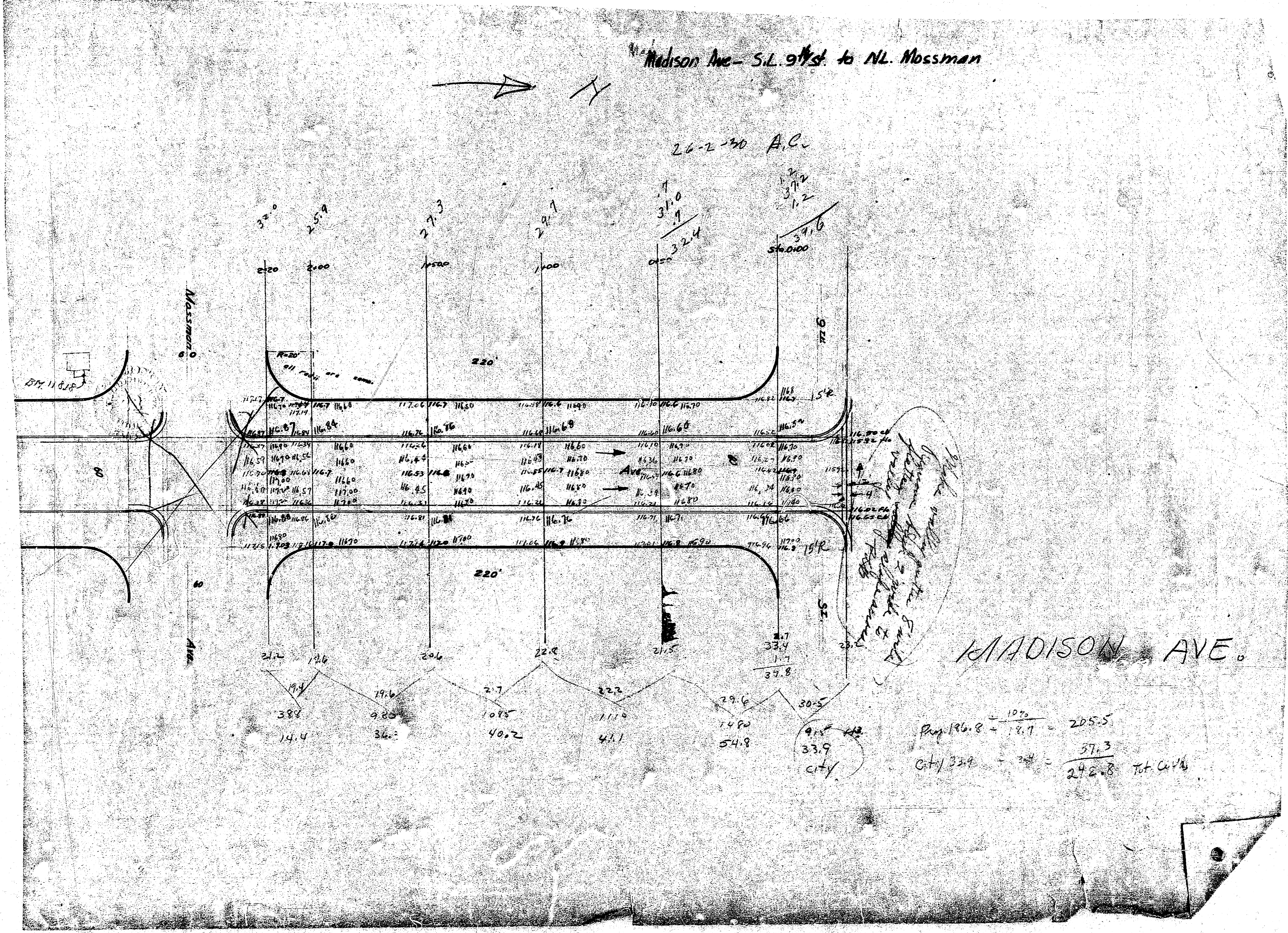


Madison Ave - S.E. 9th St. to N.L. Mossman

26-2-30 A.C.



1/2" = 10' (Scale)
 1/4" = 5' (Scale)
 1/8" = 2.5' (Scale)

MADISON AVE.

$$\frac{196.8 + 107}{2} = 205.5$$

$$\frac{33.9 + 37.3}{2} = 35.6$$
 City 33.9 + 37.3 = 71.2

388
 14.4
 19.6
 36.2
 2.7
 10.85
 40.2
 22.2
 41.1
 29.6
 14.80
 54.8
 30.5
 33.9
 CITY