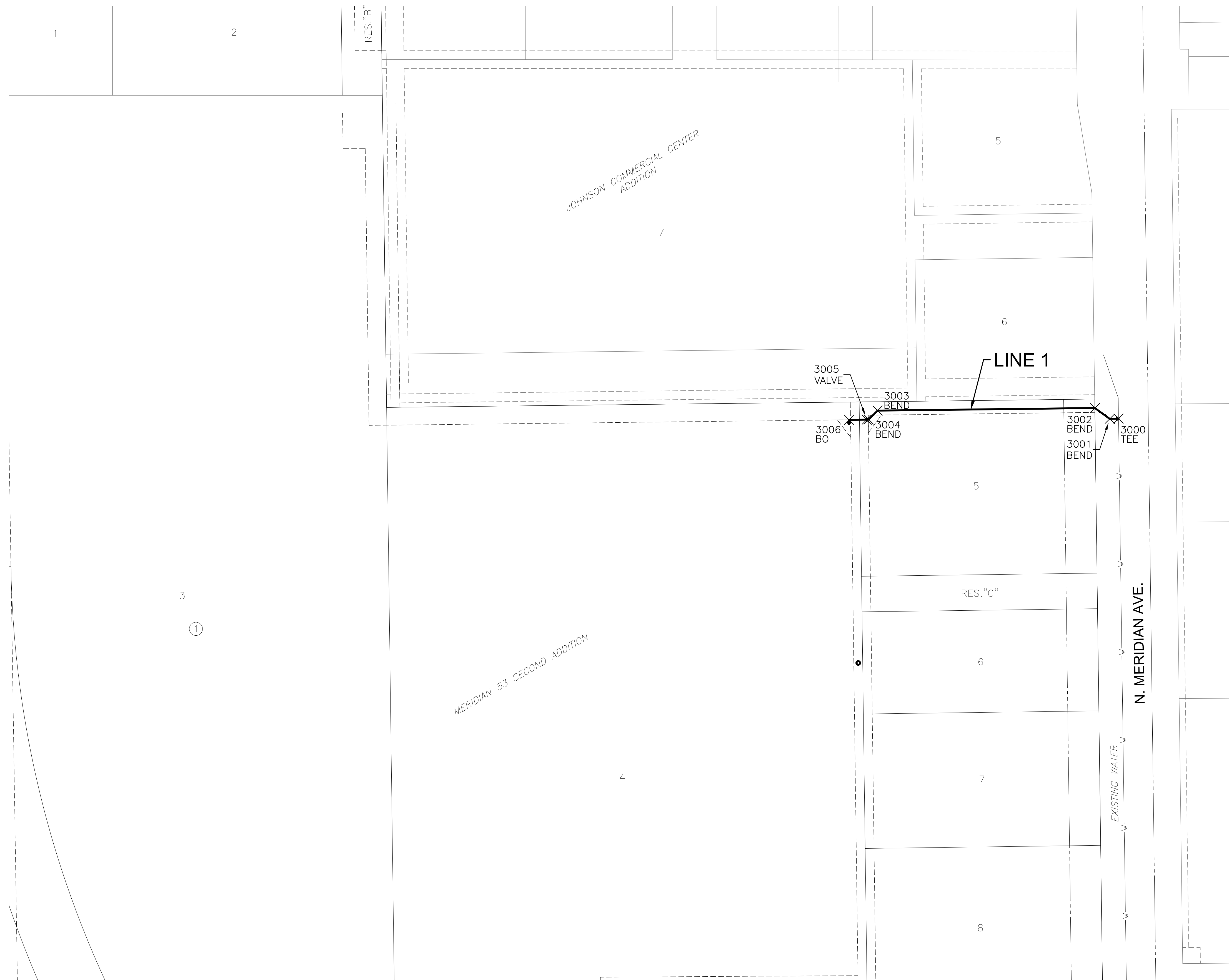


PLOTTED Wednesday, April 22, 2026 @ 11:58AM

J:\PROJECTS\2023\230110232_MERIDIAN 53 SECOND\00_230232_CAD\SHIFTS\05_CIVIL\WTRPH230232_C-601-W02.DWG



WATER POINTS			
Point #	Northing	Easting	Desc.
3000	1719740.16	1638527.92	TEE
3001	1719740.05	1638518.10	BEND
3002	1719752.01	1638501.40	BEND
3003	1719749.24	1638256.81	BEND
3004	1719739.24	1638246.81	BEND
3005	1719739.09	1638244.68	VALVE
3006	1719738.86	1638224.69	BO



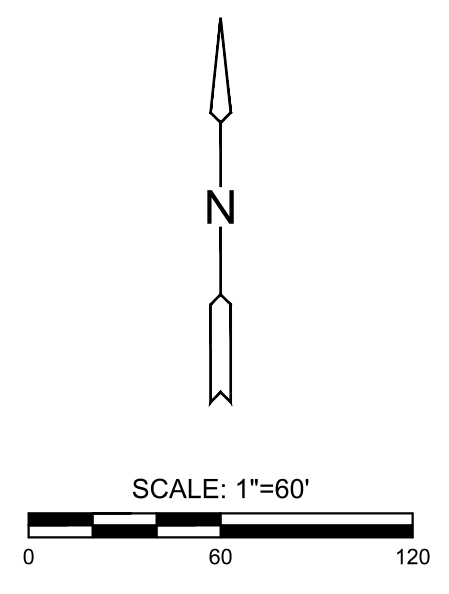
WATER DISTRIBUTION SYSTEM IMPROVEMENTS
MERIDIAN 53 SECOND ADDITION
 PHASE 2

COORDINATE
MAP & TABLE

PROJECT NO.
448-2024-003911

SCALE
1"=60'

DRAWN	DESIGNED	CHECKED
RMH	DFL	SPE



NO.	REVISION	DATE
0	ISSUED FOR CONSTRUCTION	4/22/2026

SHEET NO.
C-602-W02
06 OF 13

©2026 MKEC ENGINEERING, INC. ALL RIGHTS RESERVED WWW.MKEC.COM THESE DRAWINGS AND THEIR CONTENTS, INCLUDING, BUT NOT LIMITED TO, ALL CONCEPTS, DESIGNS, & IDEAS ARE THE EXCLUSIVE PROPERTY OF MKEC ENGINEERING, INC. (MKEC), AND MAY NOT BE USED OR REPRODUCED IN ANY WAY WITHOUT THE EXPRESS CONSENT OF MKEC.