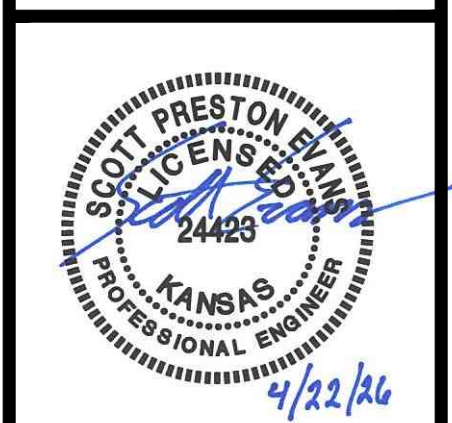
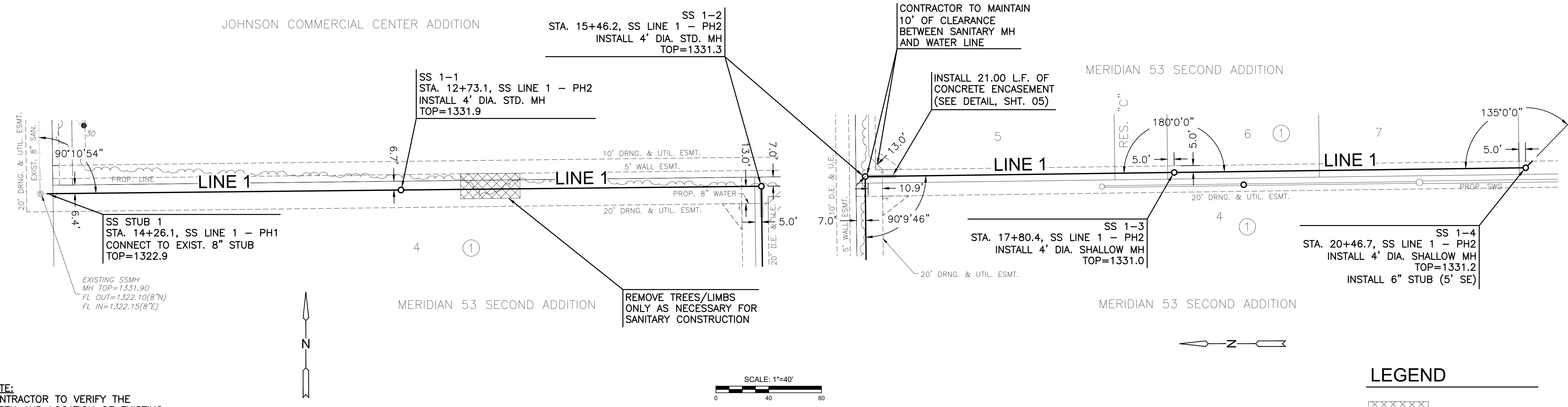


12/20/24
 PLOTTED Wednesday, April 22, 2025 @ 12:00PM



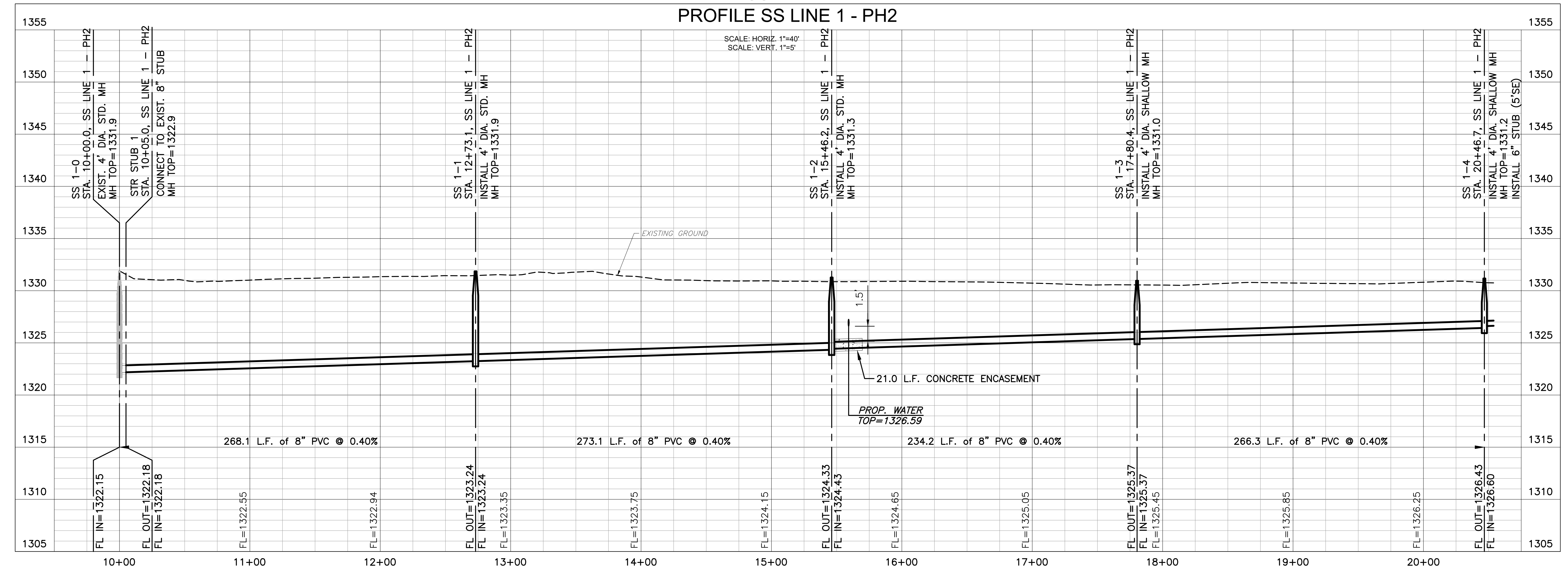
JOHNSON COMMERCIAL CENTER ADDITION

MERIDIAN 53 SECOND ADDITION



NOTE:
 CONTRACTOR TO VERIFY THE
 DEPTH AND LOCATION OF EXISTING
 UTILITIES PRIOR TO CONSTRUCTION.

PLAN SS LINE 1 - PH2
 PROFILE SS LINE 1 - PH2



SANITARY SEWER PHASE 2

MERIDIAN 53 SECOND ADDITION

WICHITA, KANSAS

SAN LINE 1		
PROJECT NO.	468-2024-003916	
SCALE	VERT: 1"=5'	HORZ: 1"=40'
DRAWN	DESIGNED	CHECKED
RMH	DFL	SPE
NO.	REVISION	DATE
0	ISSUED FOR CONSTRUCTION	4/22/24
SHEET NO. C-201-S02 02 OF 12		

J:\PROJECTS\2024\201010232_MERIDIAN 53 SECOND\00_230232 CAD\SH1 S05 CIVIL\SANPH230232_C-101-S02.DWG

©2025 MKEC ENGINEERING, INC. ALL RIGHTS RESERVED WWW.MKEC.COM THESE DRAWINGS AND THEIR CONTENTS, INCLUDING, BUT NOT LIMITED TO, ALL CONCEPTS, DESIGNS, & DETAILS ARE THE EXCLUSIVE PROPERTY OF MKEC ENGINEERING, INC. (MKEC), AND MAY NOT BE USED OR REPRODUCED IN ANY WAY WITHOUT THE EXPRESS CONSENT OF MKEC.