



**BENCHMARKS:**

BM #1: "X" Chiseled West of Box Culvert South Side of 9th Street, 100' west and 12' north of the NW corner of Lot 1, Block A, Edgemoor Park Branch Library Addition.  
Elev. = 1376.89 (NAVD 88)

BM #2: "□" Chiseled on NW Corner of the South Curb Inlet, at the end of Jaqueline St., 5' west and 38' south of the SE corner of Lot 1, Block A, Edgemoor Park Branch Library Addition.  
Elev. = 1381.24 (NAVD 88)

From C/L N. Patricia Ave. & 9th St. N.:  
SADDLE: Sta. 0+00 = 29' N. & 37' E.  
4" TAP VALVE: Sta. 0+02 = 27' N. & 37' E.

Sta. 0+00 was Shifted 5.2' West to miss Existing Pipe Joint.

Sta. 0+00.00, Begin Line 1  
1 - 8"x4" Tapping Saddle  
1 - 4" Tapping Valve & Valve Box  
Tapping saddle, tapping valve & valve box to be furnished and installed by the City of Wichita Water Dept. Contractor to reimburse City of Wichita for water tap.  
Valve Box Elev. = 1378.20 1382.65  
N=376,232.25 E=17,567,435.40

C/L N. Patricia Ave.

Sta. 0+05.00, Line 1  
Begin installation of 45.00' L.F. RJPVC pipe under road by directional drilling.\*\*  
N=376,227.25 E=17,567,435.43

Sta. 0+68.5  
End installation of 45.00' L.F. RJPVC pipe under road by directional drilling.\*\*  
N=376,182.25 E=17,567,435.63

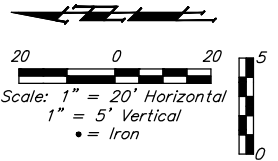
Addition:  
From C/L N. Patricia Ave. & 9th St. N.:  
SLEEVE: Sta. 0+69 = 41' S. & 38' E.  
(Sleeve used for connection of RJPVC Pipe to PVC Pipe).

\*\*All connections to directional drill pipe must be restrained joint

City maintenance of water mains ends within two feet of vault.

CAUTION!  
Ex. UG Cox Line Crossing

\* Riser Note:  
Contractor to install DICL pipe a minimum 5' outside Building. DICL riser pipe, CIMJ Bend, & DICL horizontal section exiting building foundation wall are to be mega-lugged together and riser is to be extended 12" above Building FFE. Riser location is approximate, building GC is required to locate Riser location per the foundation requirements.  
Contractor to install blind flange with 2" tap for testing. Remove flange & tap upon acceptance.



From C/L N. Patricia Ave. & 9th St. N.:  
90° BEND (H): Sta. 2+03 = 178' S. & 33' E.  
90° BEND (V) / RISER: Sta. 2+10.2 = 178' S. & 26' E.  
Top Riser Elev. = 1385.00

Pipe layout is shown with horizontal and vertical deflections. Contractor to use short pipe lengths, high deflection couplers, and manufacturer recommended pipe deflections to meet planned alignment.

Contractor to maintain a minimum of 10' of horizontal separation (O.D.-O.D.) between sanitary sewer and water line.

Contractor to verify depth and location of existing utilities. Contractor to relocate any existing utilities as necessary for construction.

Contact utility companies 3 weeks prior to construction to coordinate temporary removal/replacement.  
Heide Bryan, Evergy, (316) 261-6354  
Shannon Brinkmeyer, AT&T (316) 268-2931  
Travis Taylor, Cox Comm., Travis.taylor@cox.com

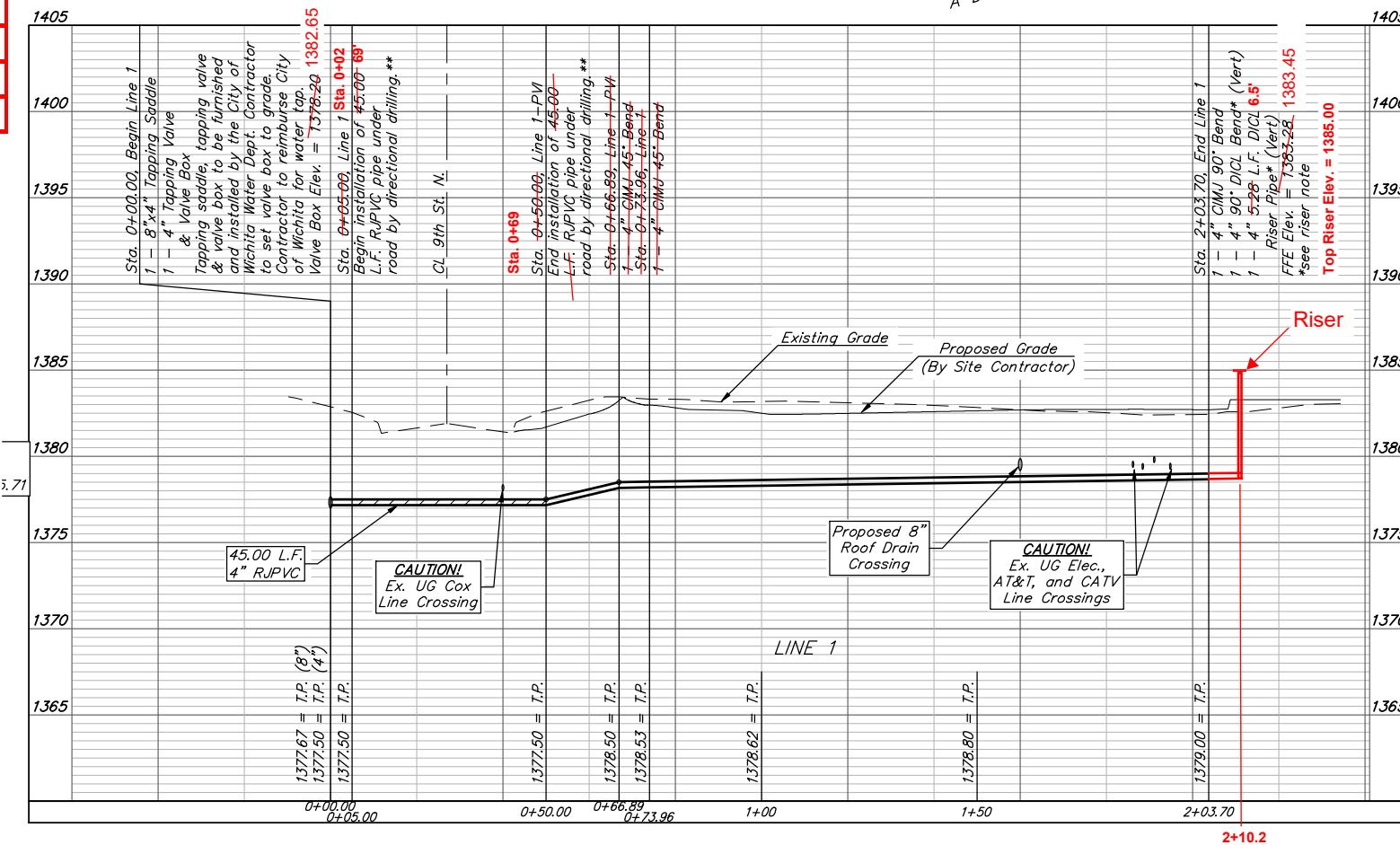
WATER LINE FITTING COORDINATES					
LINE	STA.	ITEM	NORTHING	EASTING	ELEV.
1	0+02	4" TAP Valve	376,232.44	17,567,430.22	1382.65
1	0+69	Sleeve	376,162.94	17,567,431.95	1378.54
1	0+96	Deflection	376,135.82	17,567,427.36	1378.71
1	2+03.7	90° Bend	376,026.83	17,567,428.15	1378.91
1	2+10.2	Fire Riser	376,027.79	17,567,421.70	1385.00
VALVE ELEV. = TOP OF VALVE BOX					

Northings (N) & Eastings (E): State Plane Coordinates - Kansas Regional Coordinate System, Wichita (KRCS, Wichita).  
Elevations: NAVD88.  
As-Built Survey Shots By: Fred Smith - Baughman Company, P.A.

**LEGEND**

TS = Test Station

DEPTH UNKNOWN  
Contractor to Verify Depth & Location of Existing Water Line Prior to Construction.



Professional Engineer Seal: JAMES WOOTEN, No. 21190, State of Kansas, License No. 9-18-21.

**BAUGHMAN COMPANY**  
315 Ellis St.  
Wichita, KS 67211  
316-262-7271  
BaughmanCo.com

WICHITA PUBLIC LIBRARY  
ROCKWELL BRANCH

**LINE 1**

WATER DISTRIBUTION SYSTEM

PROJECT NUMBER:  
24-04-E757

DESIGN: TJW DRAWN: TMS  
DATE: September 19, 2024

SHEET OF  
**2 11**

# edgemoor park branch library addition wichita, sedgwick county, kansas

STATE OF KANSAS SS  
COUNTY OF SEDGWICK

I, John J. Hall, Land Surveyor in said State and County, hereby certify that I have surveyed and platted "EDGEMOOR PARK BRANCH LIBRARY ADDITION", to Wichita, Sedgwick County, Kansas, and the accompanying plat is a true and correct exhibit of such survey, being described as a tract of land located in the Southeast Quarter of Section 13, Township 27 South, Range 1 East of the Sixth Principal Meridian, Sedgwick County, State of Kansas, being more particularly described as follows:

BEGINNING at the Northeast corner of Edgemoor Park, said corner being 40.00 feet South of the Northeast corner of the West Half of the Southeast Quarter of said Section 13.

THENCE S 0° 00' W on the East line of said Park, a distance of 280.00 feet;

THENCE S 90° 00' W, parallel with the North line of said Park, a distance of 313.00 feet;

THENCE N 32° 00' W a distance of 45.50 feet to the Point of Curve, said curve to the right having a central angle of 10° 00' and a radius of 450.00 feet;

THENCE on said curve to the right, a distance of 78.54 feet to the Point of Tangency;

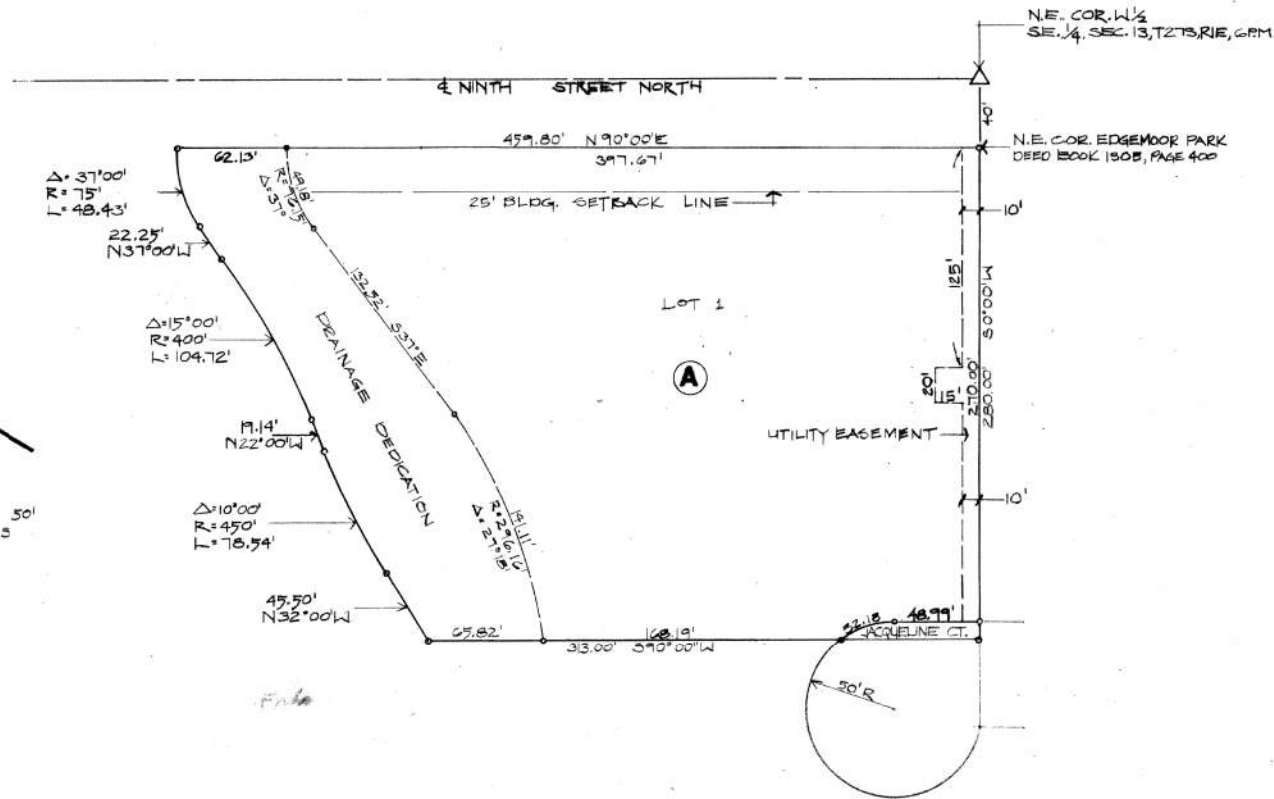
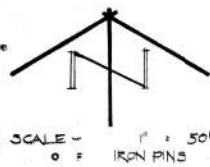
THENCE N 22° 00' W on the tangent of said curve, a distance of 19.14 feet to the Point of Curve, said curve to the left having a central angle of 15° 00' and a radius of 400.00 feet;

THENCE on said curve to the left, a distance of 104.72 feet to the Point of Tangency;

THENCE N 37° 00' W on the tangent of said curve, a distance of 22.25 feet to the Point of Curve, said curve to the right having a central angle of 37° 00' and a radius of 75.00 feet;

THENCE on said curve to the right, a distance of 48.43 feet to a Point on the North line of Edgemoor Park, said line being 40.00 feet South of and parallel with the North line of the West Half of said Southeast Quarter;

THENCE N 90° 00' E on said North line of Edgemoor Park a distance of 459.80 feet to the POINT OF BEGINNING.



This plat of "EDGEMOOR PARK BRANCH LIBRARY ADDITION" has been submitted to and approved by the Wichita-Sedgwick County Metropolitan Area Planning Commission, Wichita, Kansas.

Dated this 27<sup>th</sup> day of February, 1975.

Wichita-Sedgwick County Metropolitan Area Planning Commission.

*Harlan R. Kamen* Chairman  
Harlan R. Kamen

*Robert A. Lakin* Secretary  
Robert A. Lakin

This plat approved and all dedications shown hereon, if any, accepted by the City Commission of the City of Wichita, Kansas.

*John S. Stevens* VICE Mayor  
John S. Stevens

*Donald C. Gislack* City Clerk  
Donald C. Gislack

This plat approved and all dedications shown hereon, if any, accepted by the Board of County Commissioners of Sedgwick County, Kansas.

*Earl E. Scott* Chairman  
Earl E. Scott

*John Hale* Commissioner  
John Hale

*Tom Scott* Commissioner  
Tom Scott

ATTEST: *George Pierce* County Clerk  
George Pierce

STATE OF KANSAS SS  
COUNTY OF SEDGWICK

This is to certify that this instrument was filed for record in the Register of Deeds Office at 2:00 P.M. on the 15<sup>TH</sup> day of SEPTEMBER, 1975.

*Bette F. McCart* Register of Deeds  
Bette F. McCart

*Pearl E. Gilbert* Deputy  
Pearl E. Gilbert

Entered on Transfer Records this 15<sup>TH</sup> day of SEPTEMBER, 1975.

*George Pierce* County Clerk  
George Pierce

STATE OF KANSAS  
COUNTY OF SEDGWICK SS.

Know all men by these presents that the Wichita Public Library Board has caused the land described in the surveyor's certificate to be platted into a lot, block, and street to be known as "EDGEMOOR PARK BRANCH LIBRARY ADDITION", to Wichita, Sedgwick County, Kansas. The utility easement shown on the plat is hereby granted for construction and maintenance of all public utilities. The drainage right of way as indicated is hereby dedicated to the public. The street is hereby dedicated to and for the use of the public.

Wichita Public Library Board.

*Samuel E. Spaght* Chairman  
Samuel E. Spaght

*Lewis Farha* Secretary  
Lewis Farha

STATE OF KANSAS  
COUNTY OF SEDGWICK SS.

The foregoing instrument was acknowledged before me this 10<sup>th</sup> day of March, 1975, by Samuel E. Spaght, Chairman, and Lewis Farha, Secretary, of the Wichita Public Library Board, on behalf of the Board.

My Commission Expires:

*Dec. 28, 1977*

*Rita Goodwin* Notary Public  
RITA GOODWIN

#247377

FOR REFERENCE ONLY  
NOT TO SCALE

3-3-75  
*John J. Hall* L.S. #341  
JOHN J. HALL  
L.S. #341  
LAND SURVEYOR

**BAUGHMAN COMPANY**  
315 Ellis St.  
Wichita, KS 67211  
316-262-7271  
BaughmanCo.com

WICHITA PUBLIC LIBRARY  
ROCKWELL BRANCH

**COPY OF PLAT**

WATER DISTRIBUTION SYSTEM  
PROJECT NUMBER: 24-04-E757  
DESIGN: DRAWN:  
DATE: September 6, 2024  
SHEET 11 OF 11

File: E:\Projects\Wichita Public Libraries (24-04-E757)\Rockwell\Phase 1\PPW\PPW.dwg