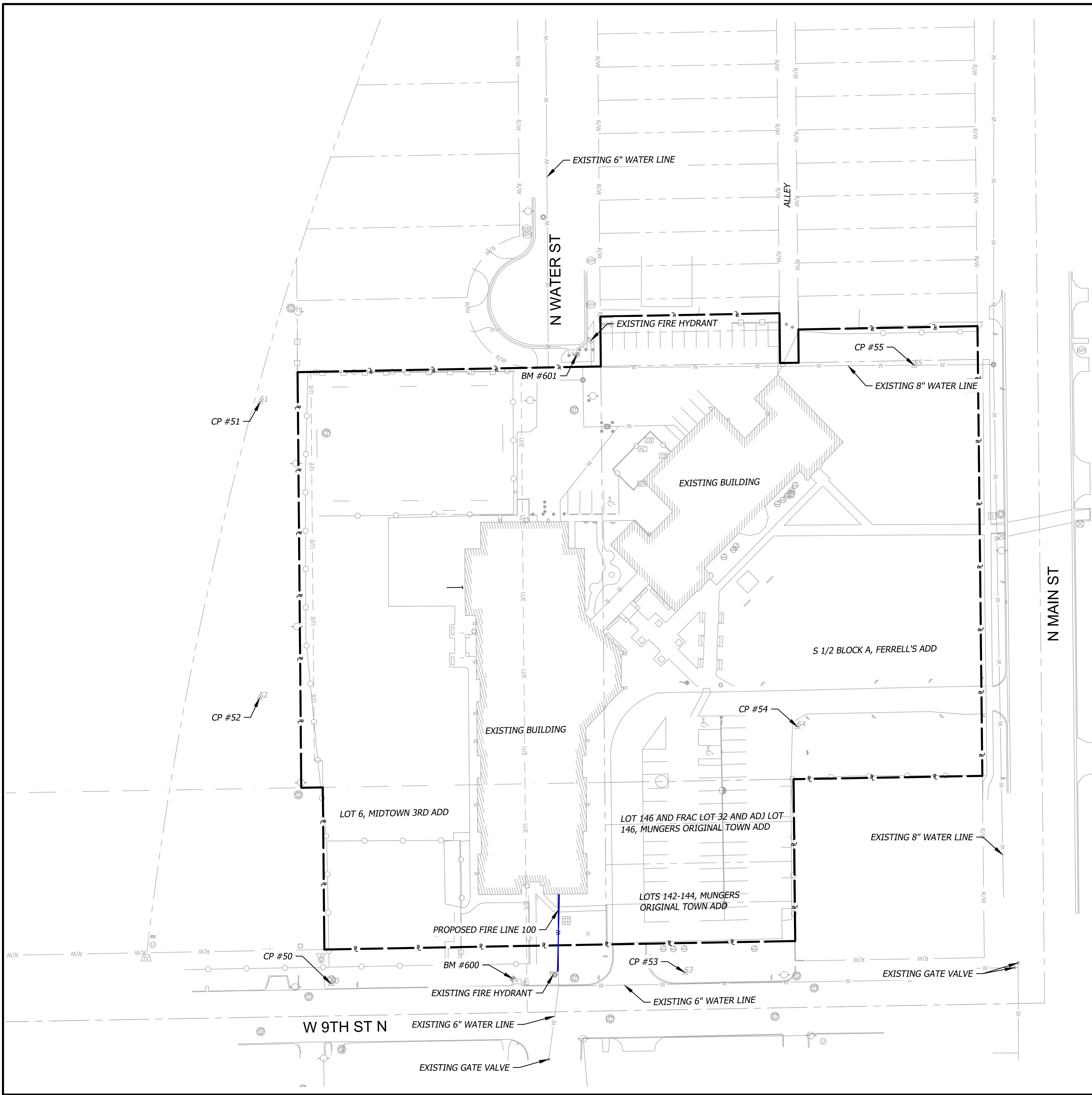


Nov 08, 2024 - 2:38pm Plotted By: catherine.smail V:\045850 -Multi-Agency Center\04-DMG\Eng\Sheet\PPM\045850-PPM-SHFS-KEN.dwg Layout: Genl-Info



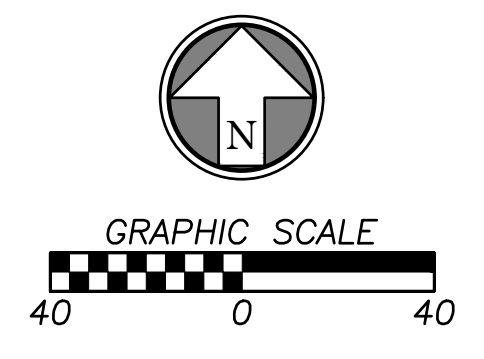
PROJECT CONTROL TABLE (NAD83 KANSAS STATE PLANE, SOUTH ZONE, US SURVEY FOOT)						
POINT NO.	CONTROL POINT/ BENCHMARK DESCRIPTION	GROUND VALUE NORTHING COORDINATE	GROUND VALUE EASTING COORDINATE	ELEV.	GRID VALUE NORTHING COORDINATE	GRID VALUE EASTING COORDINATE
50	1/2" REBAR W/CONTROL POINT CAP	1690996.36	1648117.95	1304.63'	1690802.03	1647928.54
51	1/2" REBAR W/CONTROL POINT CAP	1691433.90	1648064.79	1306.57'	1691239.51	1647875.39
52	1/2" REBAR W/CONTROL POINT CAP	1691211.33	1648064.33	1305.94'	1691016.97	1647874.93
53	1/2" REBAR W/CONTROL POINT CAP	1691004.70	1648384.08	1304.58'	1690810.36	1648194.64
54	1/2" REBAR W/CONTROL POINT CAP	1691189.47	1648468.72	1304.95'	1690995.11	1648279.27
55	1/2" REBAR W/CONTROL POINT CAP	1691461.23	1648556.49	1305.27'	1691266.84	1648367.03

BENCHMARKS:
SURVEY BENCHMARK
 BENCHMARK NUMBER: 600
 ELEVATION= 1304.50

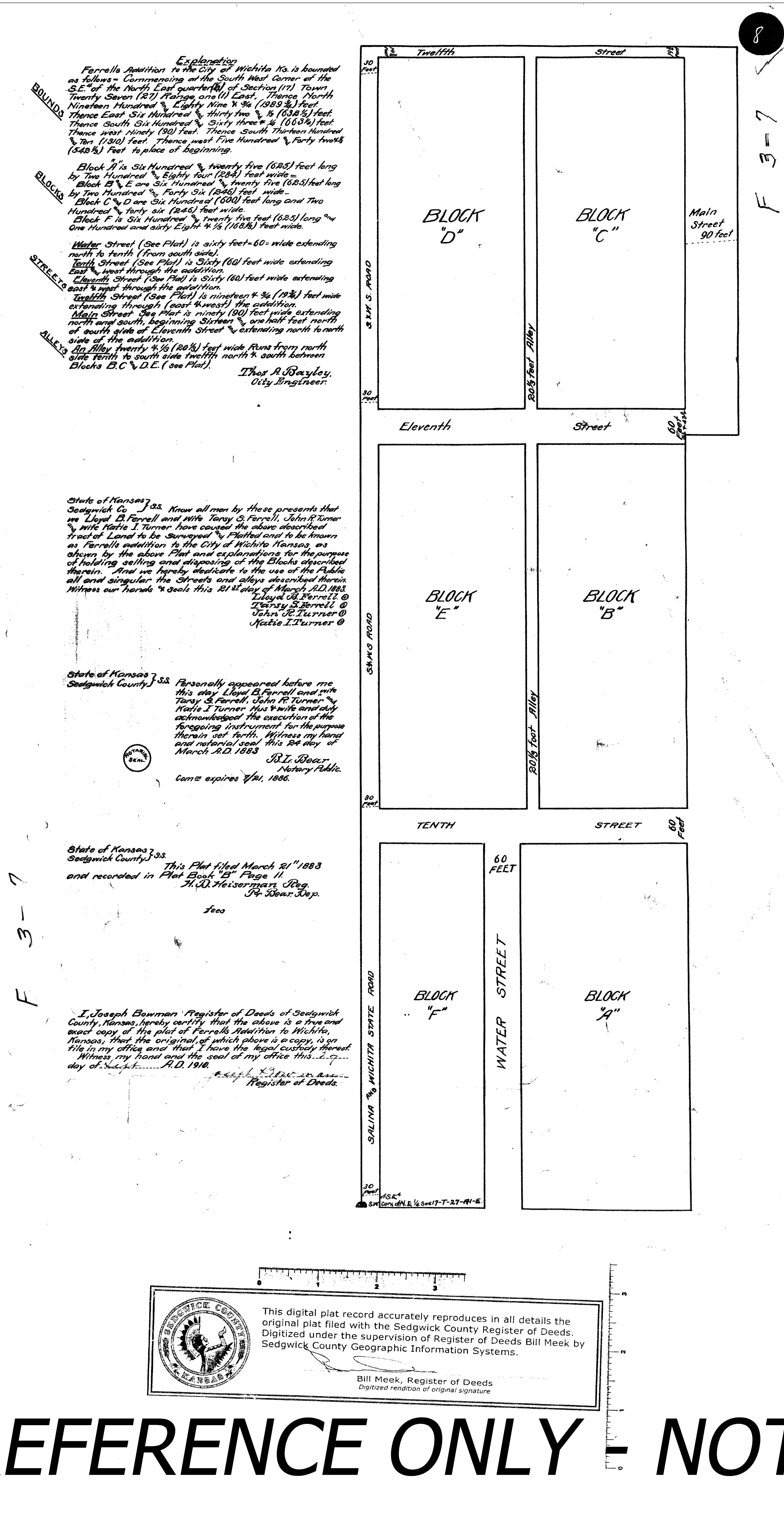
SET SQUARE CHISELED ON THE NORTHWEST CORNER OF A CATCH BASIN, ON THE NORTH SIDE OF 9TH ST, APPROXIMATELY 354 FEET WEST OF THE WEST RIGHT-OF-WAY LINE OF MAIN STREET.

SURVEY BENCHMARK
 BENCHMARK NUMBER: 601
 ELEVATION= 1304.93

SET SQUARE CHISELED ON THE SOUTHEAST CORNER OF A CATCH BASIN AT THE SOUTH END OF THE CUL-DE-SAC ON WATER STREET, SOUTH OF THE INTERSECTION OF 10TH AND WATER STREET.



			Prepared For: CITY OF WICHITA 455 N MAIN ST WICHITA, KS 316-942-4482		WATER DISTRIBUTION SYSTEM EMERGENCY WINTER SHELTER WICHITA, KS			KEY MAP
Design: CBS Checked: MLT Issue Date: 11/08/2024 Project Number: 029243	02							



This digital plat record accurately reproduces in all details the original plat filed with the Sedgwick County Register of Deeds. Digitized under the supervision of Register of Deeds Bill Meek by Sedgwick County Geographic Information Systems.

*Bill Meek, Register of Deeds
 Digitized rendition of original signature*

FOR REFERENCE ONLY - NOT TO SCALE

WATER DISTRIBUTION SYSTEM EMERGENCY WINTER SHELTER WICHITA, KS		Prepared For: CITY OF WICHITA 455 N MAIN ST WICHITA, KS 316-942-4482	
FERRELL'S ADD PLAT		Design: CBS Drawn: CBS Checked: MLT Issue Date: 11/08/2024 Project Number: 029243	Rev. Date By Description
13		App.	