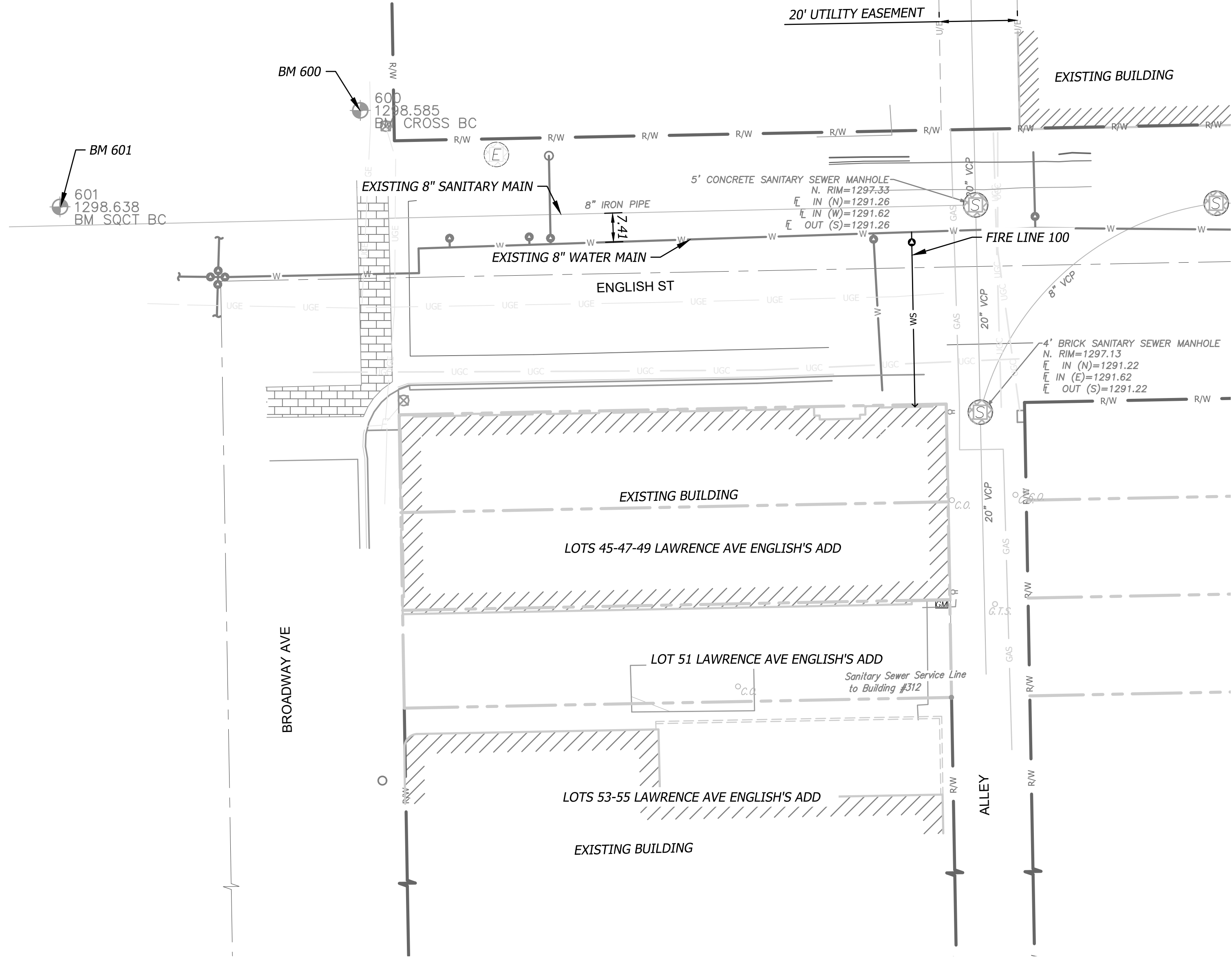


Apr 29, 2025 - 11:14am Plotted By: catherine.smith V:\046750-333 English\04-DWG\Eng\Sheet\PPM\046750-SHITS-PPM-KEM.dwg Layout: Gen-Info



BENCHMARKS:
 SURVEY BENCHMARK
 BENCHMARK NUMBER: 600
 ELEVATION= 1298.59

CROSS BACK OF CURB

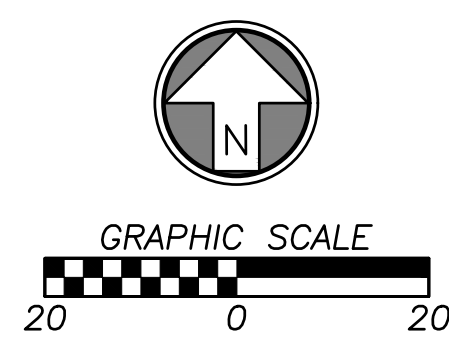
SURVEY BENCHMARK
 BENCHMARK NUMBER: 601
 ELEVATION= 1298.64

SQUARE CUT TOP OF CURB

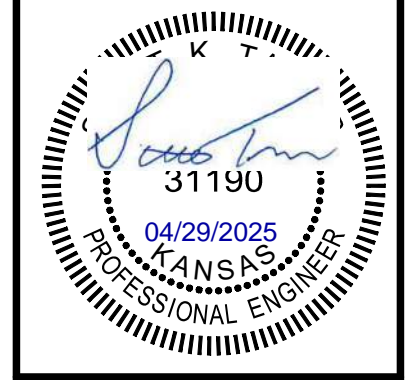
- LEGEND**
- C.O. CLEAN OUT
 - E. M.H. ELECTRIC MANHOLE
 - F.H. FIRE HYDRANT
 - G.M. GAS METER
 - G.T.S. GAS TEST STATION
 - M.H. MANHOLE
 - PM PARKING METER (2 SPOTS)
 - RD ROOF DRAIN
 - d SIGN
 - T.S. TRAFFIC SIGNAL
 - W.M. WATER METER
 - 1/2" IP 1/2" IRON PIPE (FOUND ORIGIN UNKNOWN)
 - CROSS CHISELED CROSS (FOUND ORIGIN UNKNOWN)
 - CROSS (2' OS) CHISELED CROSS (FOUND ORIGIN UNKNOWN)
 - MAG MAG NAIL (FOUND ORIGIN UNKNOWN)
 - TH CITY OF WICHITA CONTROL THIMBLE (FOUND)
 - VN CHISELED V-NOTCH (SET)

P = Platted
 M = Measured
 C = Calculated
 Pro = Prorated

- Asphalt
- Brick
- Concrete



Rev.	Date	Description	By	App.



Prepared For:
 ARENA SOUTH MANAGEMENT, LLC.
 BRUCE ROWLEY
 100 S. MAIN ST., SUITE 200
 WICHITA, KS 67202
 (316) 708-8918

WATER DISTRIBUTION SYSTEM
333 ENGLISH - APARTMENTS
WICHITA, KS 67202

KEY MAP

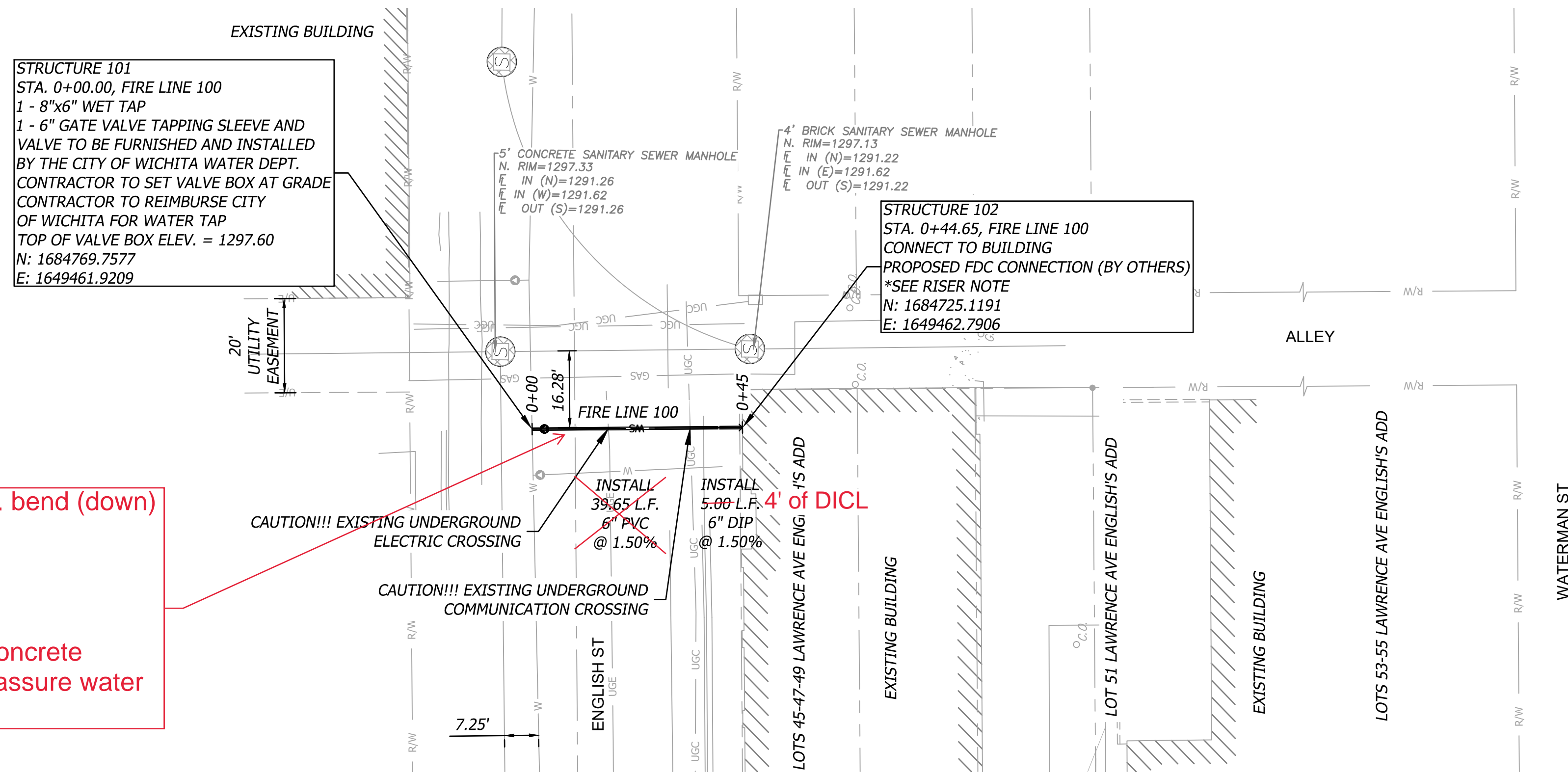
Design: CBS Drawn: CBS
 Checked: SKT
 Issue Date: 04/29/2025
 Project Number: 001428

main is 38" deep

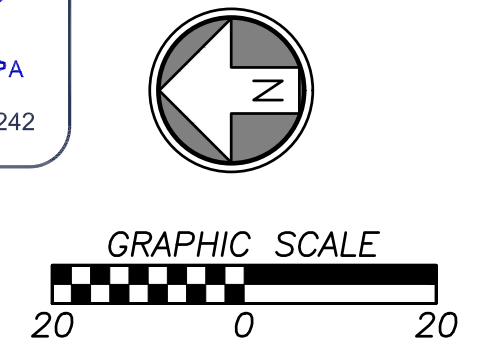
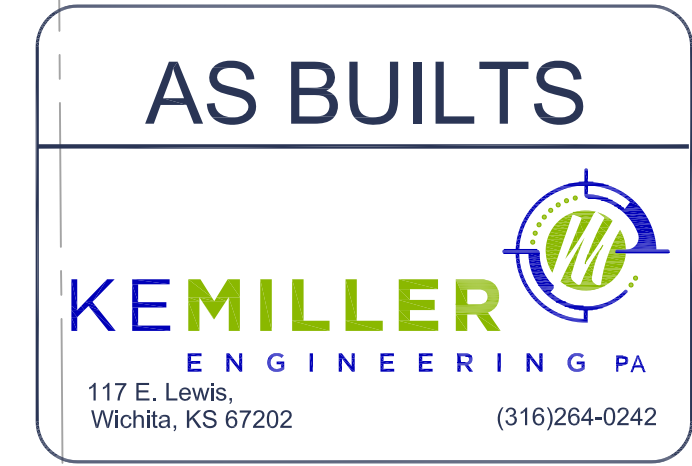
From center line of Topeka and center line of English:
 209' West & 13.8' North to tap on main water line
 209' West & 11.8' North to valve
 209' West & 6.3' North to 22 1/2 deg. bend
 209' West & 2.8' North to 2nd 22 1/2 deg. bend
 209' West & 28.3' South to long sleeve

tap then 2' DICL to valve then 6' of DICL to 22 1/2 deg. bend (down)
 2.5' of DICL to 2nd 22 1/2 deg. bend (up)
 28.3' of Certa-Lok C900 to long sleeve
 then 4' of DICL to flange

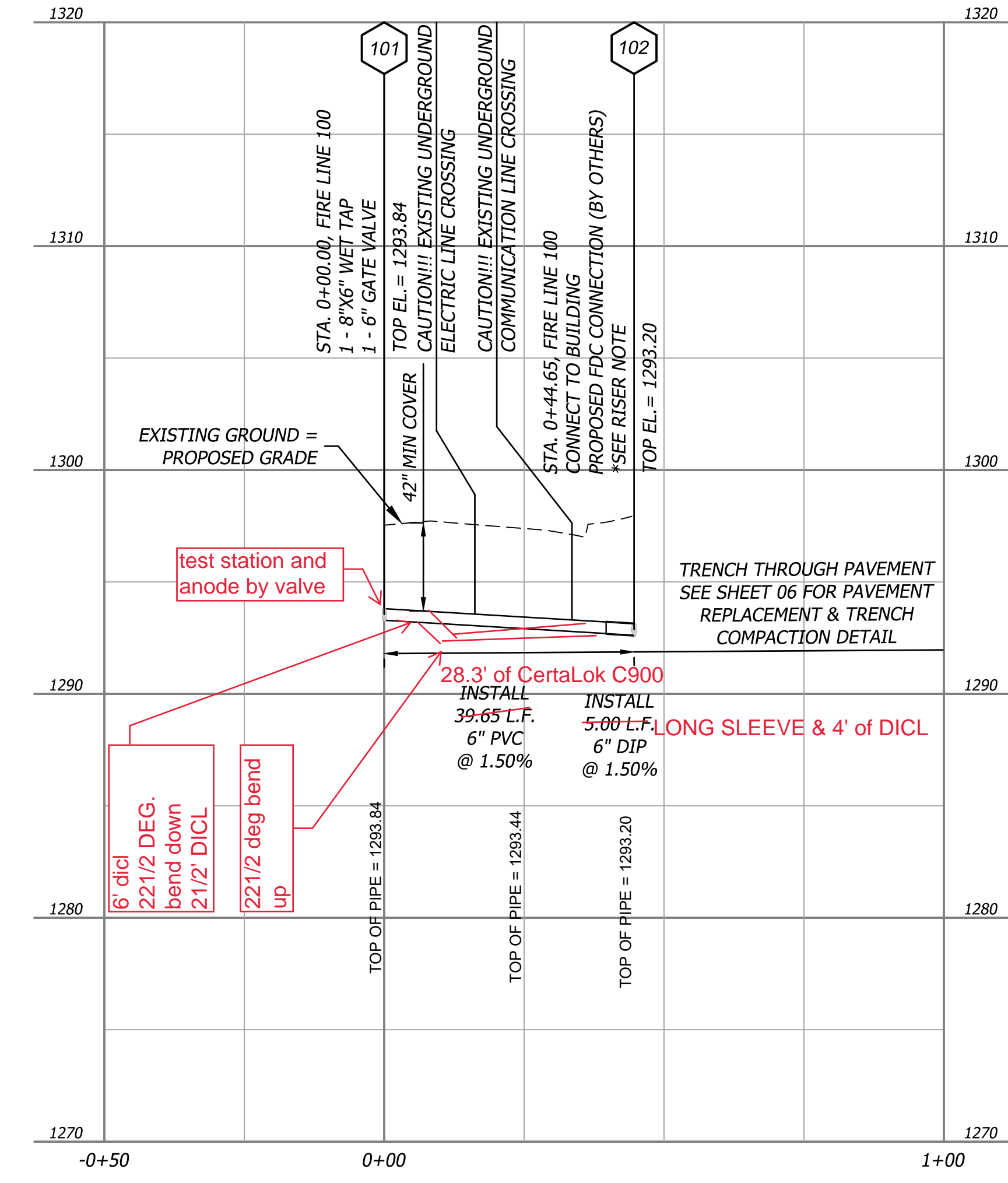
DICL pipe has a link seal around pipe contacting the concrete basement wall, then grouted with hydraulic cement to assure water proof.



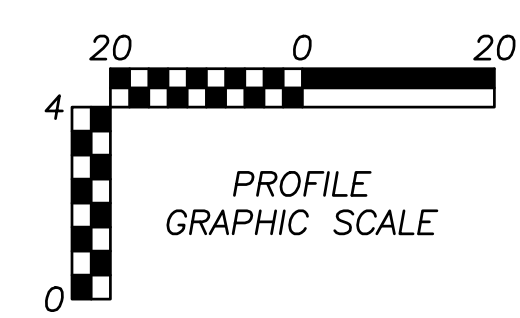
*RISER NOTE
 DICL RISER PIPE, CIMJ BEND, & DICL HORIZONTAL SECTION EXITING BUILDING FOUNDATION WALL ARE TO BE MEGA-LUGGED TOGETHER AND RISER IS TO BE EXTENDED 12" ABOVE BUILDING FFE. RISER LOCATION IS APPROXIMATE, BUILDING GC IS REQUIRED TO LOCATE RISER LOCATION PER THE FOUNDATION REQUIREMENTS. CONTRACTOR TO INSTALL BLIND FLANGE WITH 2" TAP FOR TESTING. REMOVE FLANGE & TAP UPON ACCEPTANCE.



FIRE LINE 100



Westlake certa-lok C-900-22
 U.S. Pipe DICL
 Sip MJ and gland packs
 Pro-trace wire
 Megalugs
 dig tape and test station and anode



Apr 29, 2025 - 11:15am Plotted By: catherine.smith V:\046750-333 English\04-DWG\Eng\Sheet\PPM\046750-SHTS-PPM-WKT.dwg Layout: Plan & Profile

Design: CBS	Drawn: CBS
Checked: SKT	
Issue Date: 04/29/2025	
Project Number: 001428	
03	

Rev.	Date	Description	By	App.

<p>Prepared For: ARENA SOUTH MANAGEMENT, LLC. BRUCE ROWLEY 100 S. MAIN ST., SUITE 200 WICHITA, KS 67202 (316) 708-8918</p>	<p>Professional Engineer 31190 04/29/2025 KANSAS PROFESSIONAL ENGINEER</p>
---	--

<p>WATER DISTRIBUTION SYSTEM 333 ENGLISH - APARTMENTS WICHITA, KS 67202</p>	<p>FIRE LINE 100</p>
---	----------------------

