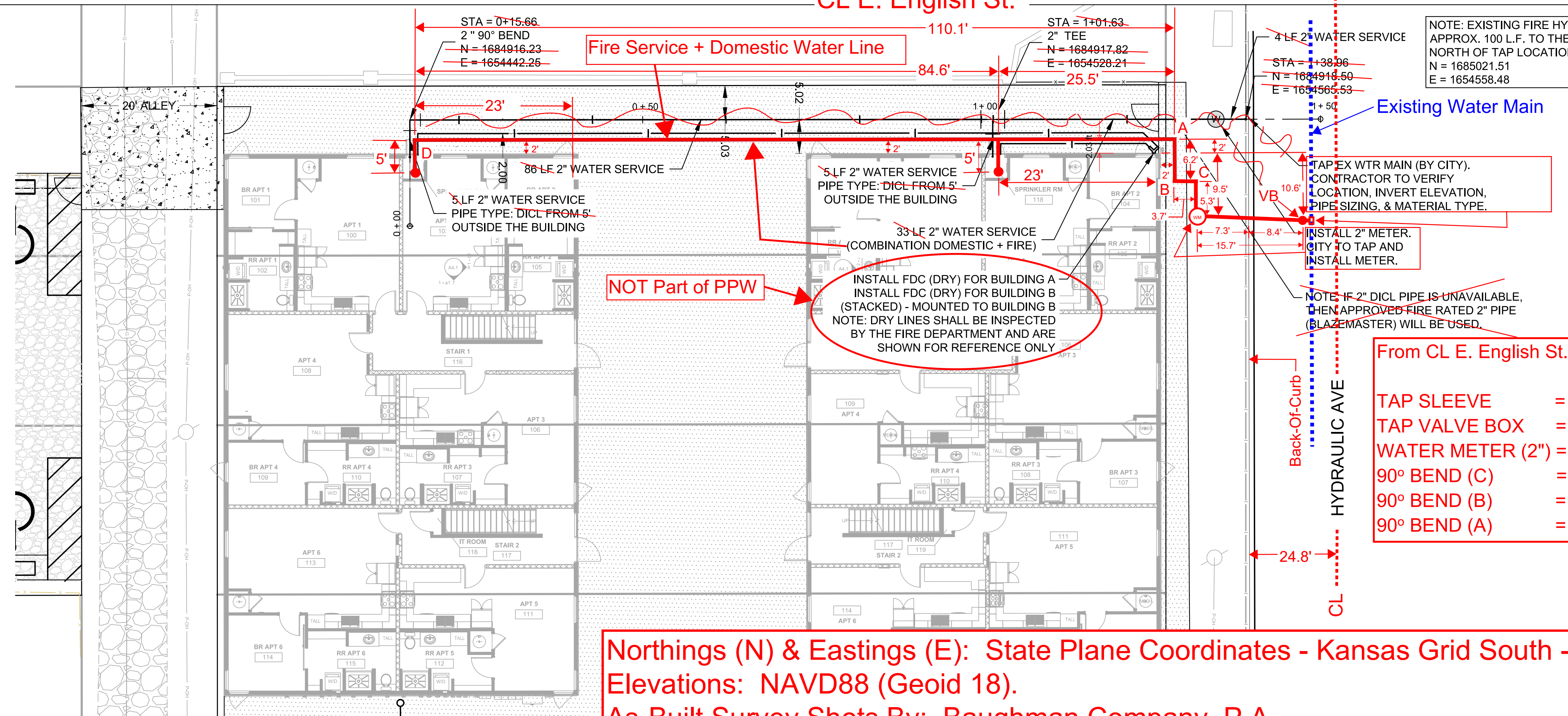


CL E. English St.



NOTE: EXISTING FIRE HYDRANT APPROX. 100 L.F. TO THE NORTH OF TAP LOCATION
 N = 1685021.51
 E = 1654558.48

LEGEND
 VB = Valve Box.
 WM = Water Meter (2")
 CL = Centerline

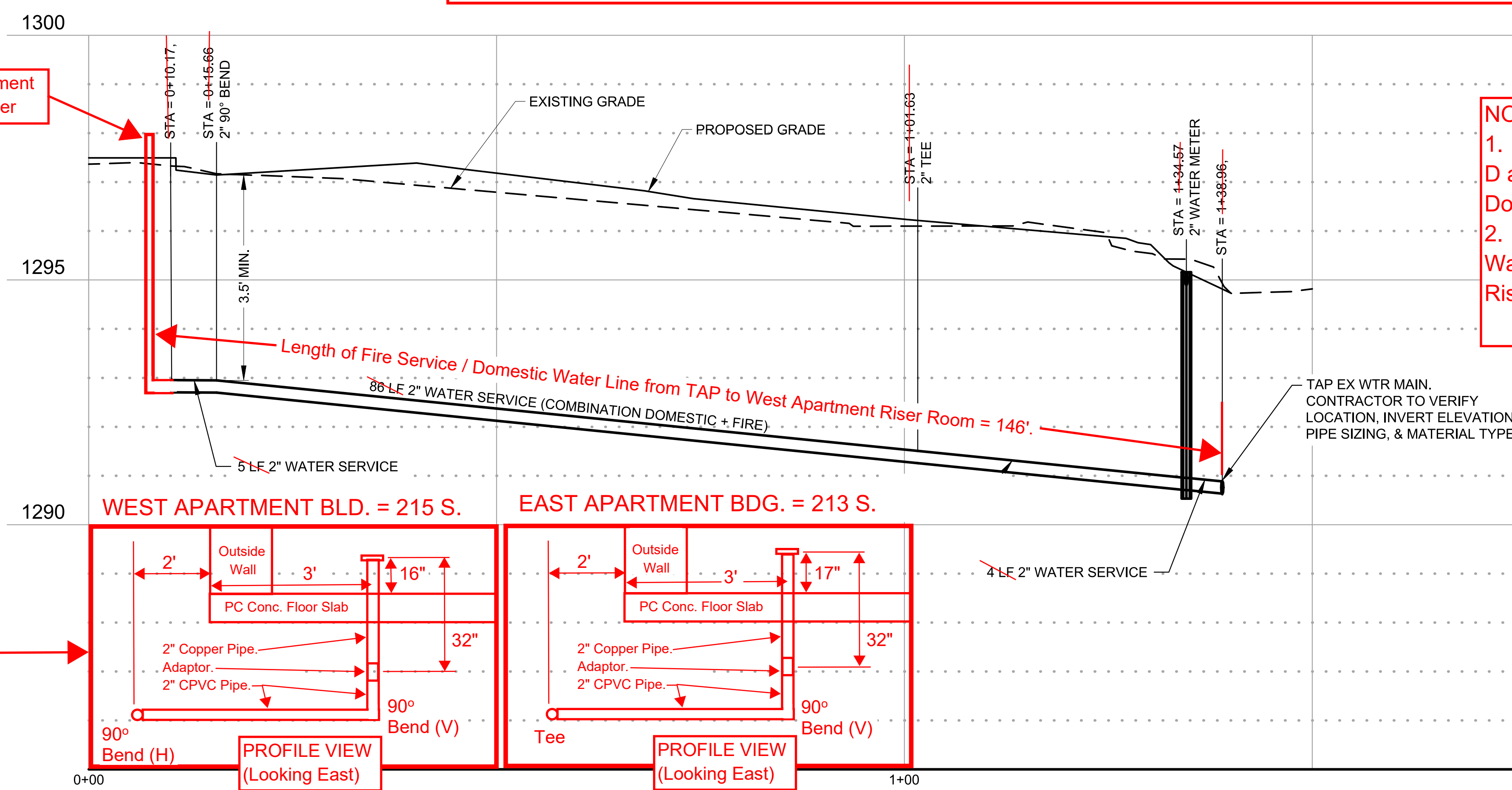
From CL E. English St. & S. Hydraulic Ave.:

TAP SLEEVE	= 173' South + 15' West.
TAP VALVE BOX	= 173' South + 16' West.
WATER METER (2")	= 172' South + 32' West.
90° BEND (C)	= 167' South + 32' West.
90° BEND (B)	= 167' South + 36' West.
90° BEND (A)	= 161' South + 36' West.

**Northings (N) & Eastings (E): State Plane Coordinates - Kansas Grid South - NAD83 (2011), EPOCH 2023.
 Elevations: NAVD88 (Geoid 18).
 As-Built Survey Shots By: Baughman Company, P.A.**

- NOTES:**
1. TAPPING SADDLE, TAPPING VALVE & VALVE BOX TO BE FURNISHED BY THE CITY OF WICHITA WATER DEPT. CONTRACTOR TO SET VALVE BOX TO GRADE. CONTRACTOR TO REIMBURSE CITY OF WICHITA FOR WATER TAP.
 2. PIPE LAYOUT IS SHOWN WITH HORIZONTAL AND VERTICAL DEFLECTIONS. CONTRACTOR TO USE SHORT PIPE LENGTHS, HIGH DEFLECTION COUPLERS, AND MANUFACTURER RECOMMENDED PIPE DEFLECTIONS TO MEET PLANNED ALIGNMENT.
 3. DEFLECTION AT PIPE JOINT OR COUPLINGS SHALL NOT EXCEED THE PIPE MANUFACTURER'S RECOMMENDED MAXIMUM WHERE DEFLECTIONS ARE GREATER THAN THE MAXIMUM ALLOWED, THE CONTRACTOR SHALL UTILIZE FITTINGS USE 2" PE PIPE.
 4. CITY MAINTENANCE OF WATER MAINS ENDS AT RIGHT-OF-WAY

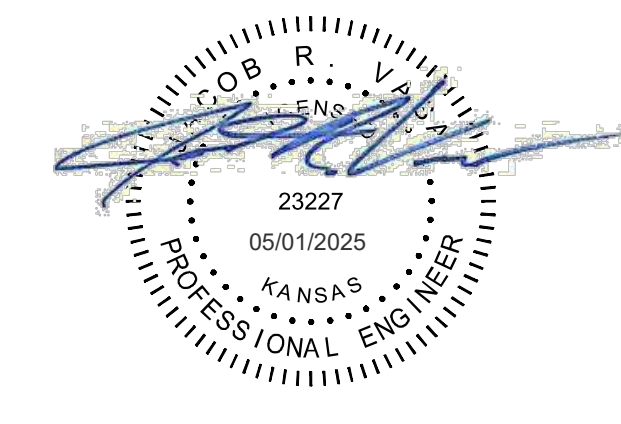
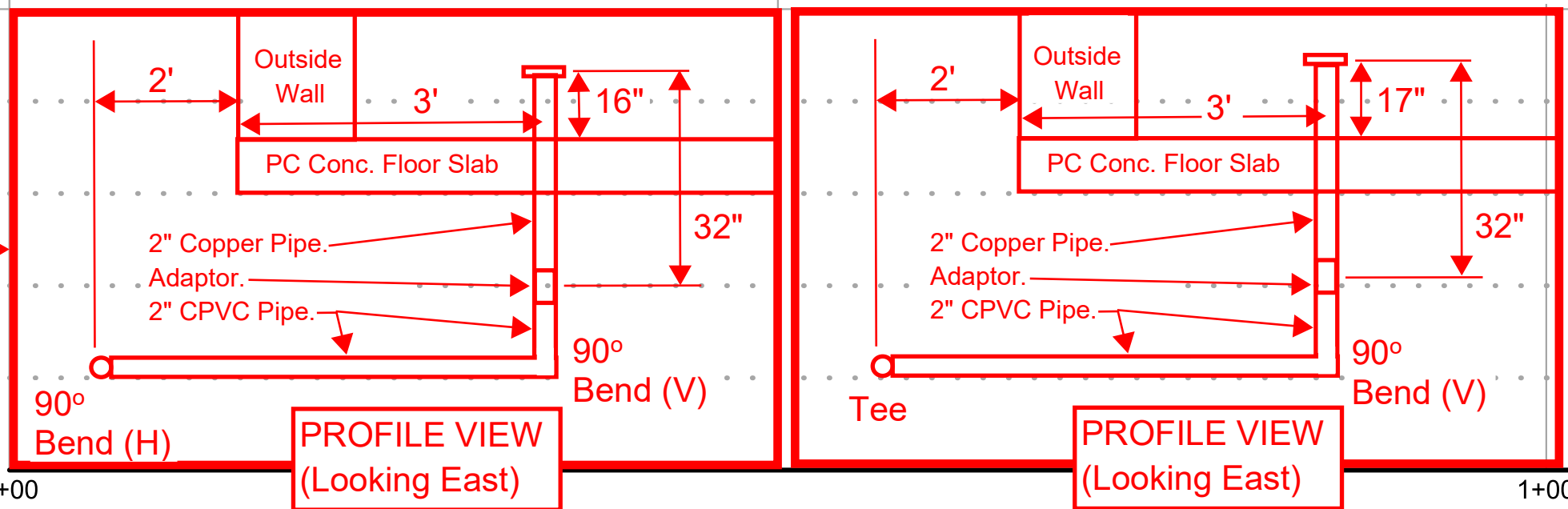
- UTILITY NOTES:**
1. CONTRACTOR TO VERIFY DEPTH AND LOCATION OF EXISTING UTILITIES. CONTRACTOR TO RELOCATE ANY EXISTING UTILITIES AS NECESSARY FOR CONSTRUCTION.
 2. CONTACT UTILITIES COMPANIES 3 WEEKS PRIOR TO CONSTRUCTION TO COORDINATE TEMPORARY REMOVAL/REPLACEMENT, HEIDE BRYAN, EVERGY, (316) 261-6354, SHANNON BRINKMEYER, AT&T, (316)-268-2931, TRAVIS TAYLOR, COX COMM., TRAVIS.TAYLOR@COX.COM
 3. CONTACT CHRIS STONE AT 316-268-4641 FOR REQUIRED CONNECTION FEES TO OBTAIN NEW WATER SERVICES & METERS. INCLUDES TAP FEES, PLANT EQUITY FEES, IN LIEU OF FEES, & ACQUISITION FEES IF APPLICABLE.



NOTE:

1. Tracer Wire runs from C to B to A to D along 2" CPVC Pipe for Fire Service / Domestic Water.
2. Length of Fire Service / Domestic Water Line from TAP to West Apartment Riser Room = 146'.

NOTE:
 Building Perimeter Footing Not Shown in Sketches.



SEH
 SHORT ELLIOTT HENDRICKSON INC.
 PHONE: 402.513.8200
 15750 DODGE RD.
 SUITE 304
 OMAHA, NE 68118
 www.sehinc.com

HYDRAULIC APARTMENTS

WATER LINE PPRO

WATER DISTRIBUTION SYSTEM

PROJECT NUMBER
 PT177505

DESIGN: AKK DRAWN: JC/SC
 DATE: 04-09-25

SHEET 2 OF 9

Save: 4/29/2025 3:18 PM [baughman] Plot: 4/30/2025 12:19 PM X:\F:\JUNNCS1\806888\5-final.dwg sheet18 of 18 PPRO.dwg