

SITE UTILITY LEGEND

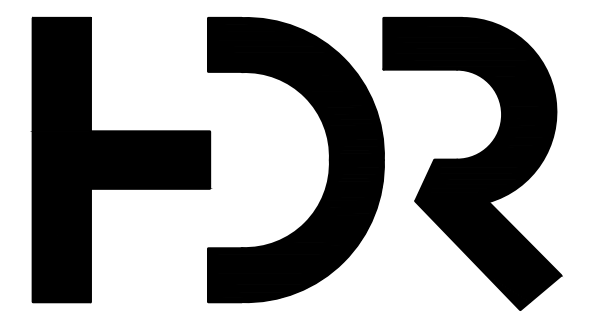
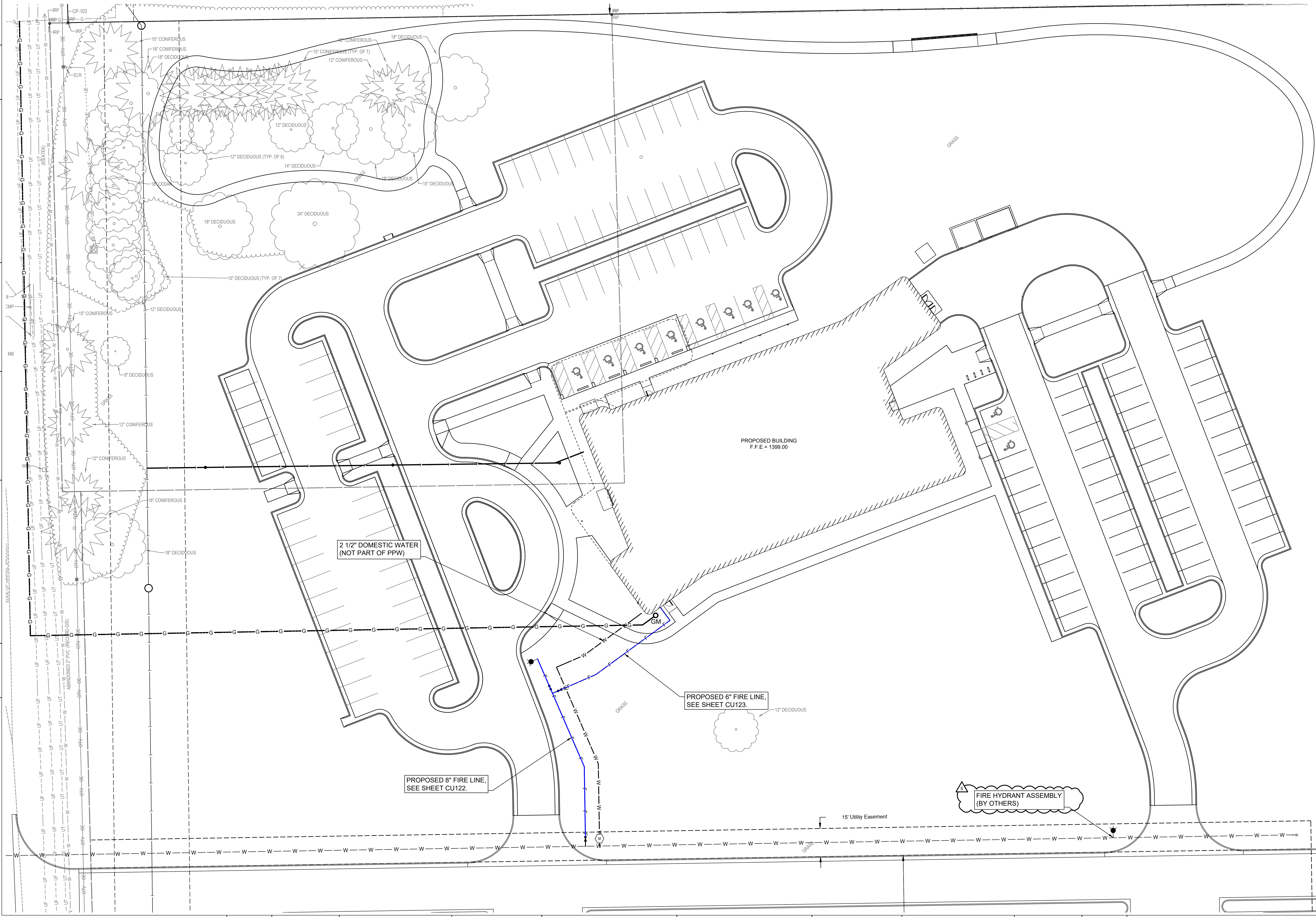
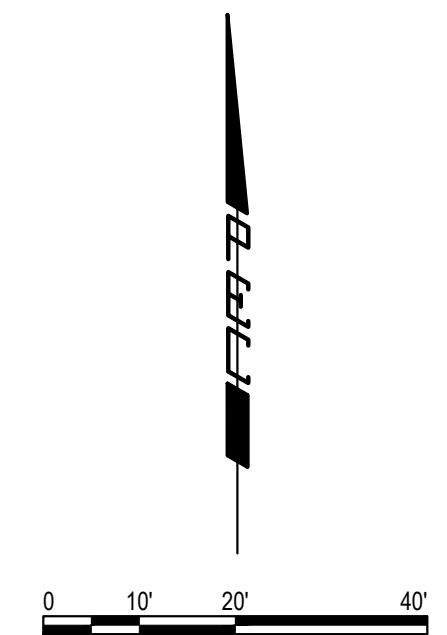
- PROPOSED SANITARY SEWER
- PROPOSED SANITARY SEWER CLEANOUT
- PROPOSED WATERLINE
- PROPOSED FIRE WATERLINE
- PROPOSED FIRE HYDRANT
- PROPOSED WATER METER

CONTROL SUMMARY
 HORIZONTAL DATUM/COORDINATE SYSTEM: NAD 83 KANSAS SOUTH ZONE
 PROJECT COORDINATE SYSTEM: (GRID) ON DESCRIBED COORDINATE SYSTEM
 VERTICAL DATUM: NAVD 88
 SCALE POINT: NORTHINGS 0, EASTINGS 0
 COMBINED ADJUSTMENT FACTOR (CAF):
 GROUND TO GRID=0.99987867
 GRID TO GROUND=1.0001213399
 DISTANCE UNITS: US SURVEY FEET

BENCH MARKS
 BM-201
 ELEV: 1,387.07 (NAVD 88)
 TOP OF NUT FOR WATER VALVE ON SOUTH SIDE OF DITCH
 SLOPE NORTH OF BARB WIRE FENCE SOUTHEAST OF CIRCLE
 GREENWICH ELEMENTARY SCHOOL ON EAST SIDE OF
 GREENWICH ROAD.
 BM-202
 ELEV: 1,395.98 (NAVD 88)
 SQUARE CUT AT SECOND JOINT LINE EAST OF GREENWICH
 ROAD SOUTH SIDE OF SOUTH DRIVE ENTRANCE SOUTHWEST
 OF
 CIRCLE GREENWICH ELEMENTARY SCHOOL

HORIZONTAL CONTROL POINTS
 CP-101
 N: 1,706,364.9329 E: 1,687,286.8447
 1/2" BAR WITH YELLOW BAUGHMAN CAP
 1. 99.70' S TO LINE OF FENCE WEST
 2. 24.12' W TO LINE OF FENCE SOUTH
 3. 102.60' SSW TO FENCE CORNER POST
 4. ON EAST TOP OF DITCH
 CP-102
 N: 1,706,282.2753 E: 1,686,708.1889
 1/2" BAR WITH BLUE CP CAP
 1. 26.58' S TO LINE OF FENCE EAST-WEST
 2. 49.48' WSW TO WATER VALVE TOP NUT
 3. 66.00' W TO EAST EDGE OF DRIVE NORTH EXTENDED
 4. 15.00' N TO SOUTH EDGE OF DRIVE EXTENDED
 CP-103
 N: 1,706,245.8650 E: 1,685,983.0420
 1/2" BAR WITH YELLOW BAUGHMAN CAP
 1. 26.52' E TO GAS LINE TEST STATION
 2. 23.60' S TO POWER POLE
 3. 9.19' W TO NORTH END FENCE POST
 4. 37.15' N TO SOUTH EDGE OF EAST-WEST DRIVE

UTILITY LOCATE NOTE:
 DISSAFE
 TICKET NO: 24543829 ORIGINAL CALL DATE: 10/17/2024 07:44 AM
 MEMBERS NOTIFIED (PHONE NUMBER):
 ATT DISTRIBUTION (800-778-9140)
 COX COMMUNICATION (800-778-9140)
 EVERGY (800-778-9140)
 IDEATEK TELCOM LLC (620-543-5555)
 KANSAS GAS SERVICE (800-794-4780)
 SEDGWICK COUNTY RWD 1 (316-144-3173)
 WICHITA WATER (316-268-4555)



HDR Architecture, Inc.
 Kansas City
 10450 Holmes Road,
 Suite 600
 Kansas City, Mo
 64131-3471



BOB D. CAMPBELL & CO.
 Structural Engineers Since 1957
 4338 Belleview Ave. 916.531.4144
 Kansas City, MO 64111 www.bdc-engr.com

**Children's Mercy
 Hospital
 Wichita MOB**
 Wichita, Kansas



Project Manager	HR
Project Designer	HR
Project Architect	HR
Landscape Architect	HR
Civil Engineer	PEC
Structural Engineer	BDC
Mechanical Engineer	PEC
Electrical Engineer	PEC
Plumbing Engineer	PEC
Interior Designer	HR
Equipment Planner	HR
Wayfinding	

MARK	DATE	DESCRIPTION
6	05-20-2025	COW COMMENTS

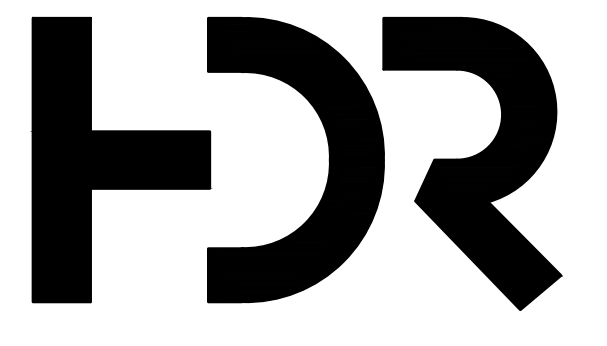
Project Number 240334-000
 Original Issue 02/12/2025



Sheet Name
PPW KEY MAP

Sheet Number
CU121

Project Status
 100% CONSTRUCTION DOCUMENTS



HDR Architecture, Inc.
 Kansas City
 10450 Holmes Road,
 Suite 600
 Kansas City, Mo
 64131-3471



BOB D. CAMPBELL & CO.
 Structural Engineers Since 1957
 4338 Bellevue Ave. 916.531.4144
 Kansas City, MO 64111 www.bdc-engr.com

Children's Mercy
 Hospital
 Wichita MOB
 Wichita, Kansas



Project Manager	HDR
Project Designer	HDR
Project Architect	HDR
Landscape Architect	HDR
Civil Engineer	PEC
Structural Engineer	BDC
Mechanical Engineer	PEC
Electrical Engineer	PEC
Plumbing Engineer	PEC
Interior Designer	HDR
Equipment Planner	HDR
Wayfinding	

MARK	DATE	DESCRIPTION
6	05-20-2025	COW COMMENTS

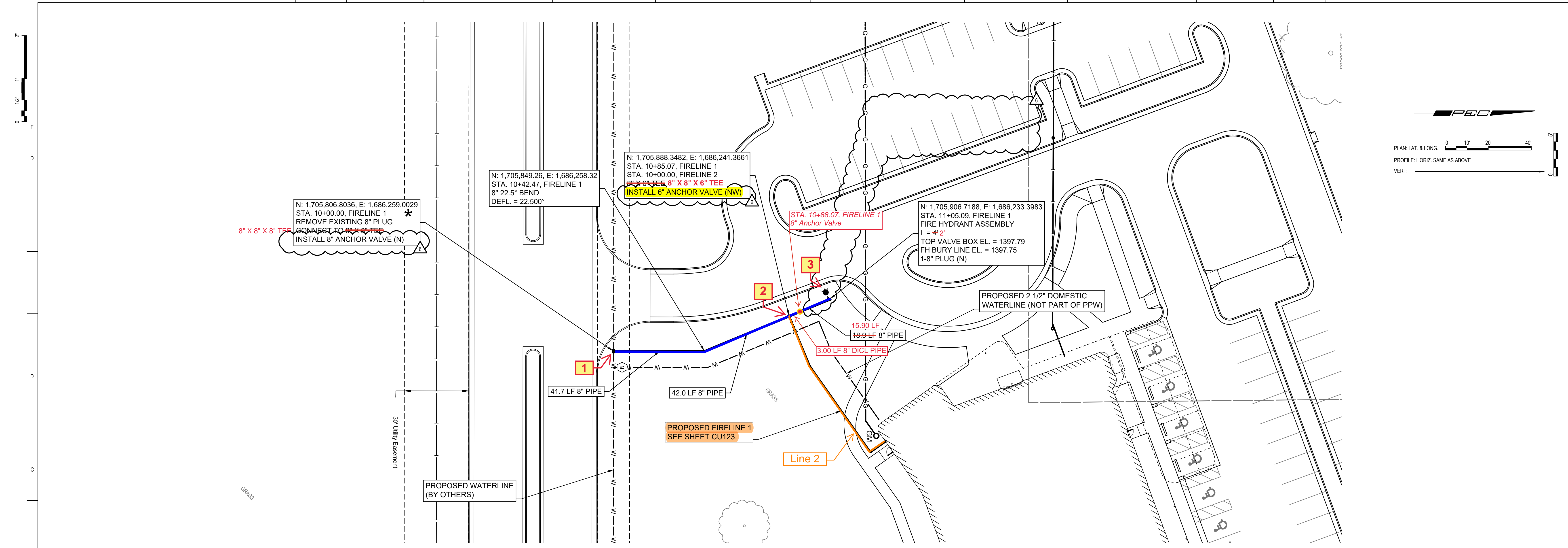
Project Number 240334-000
 Original Issue 02/12/2025



Sheet Name
FIRELINE 1 PLAN & PROFILE

Sheet Number
CU122

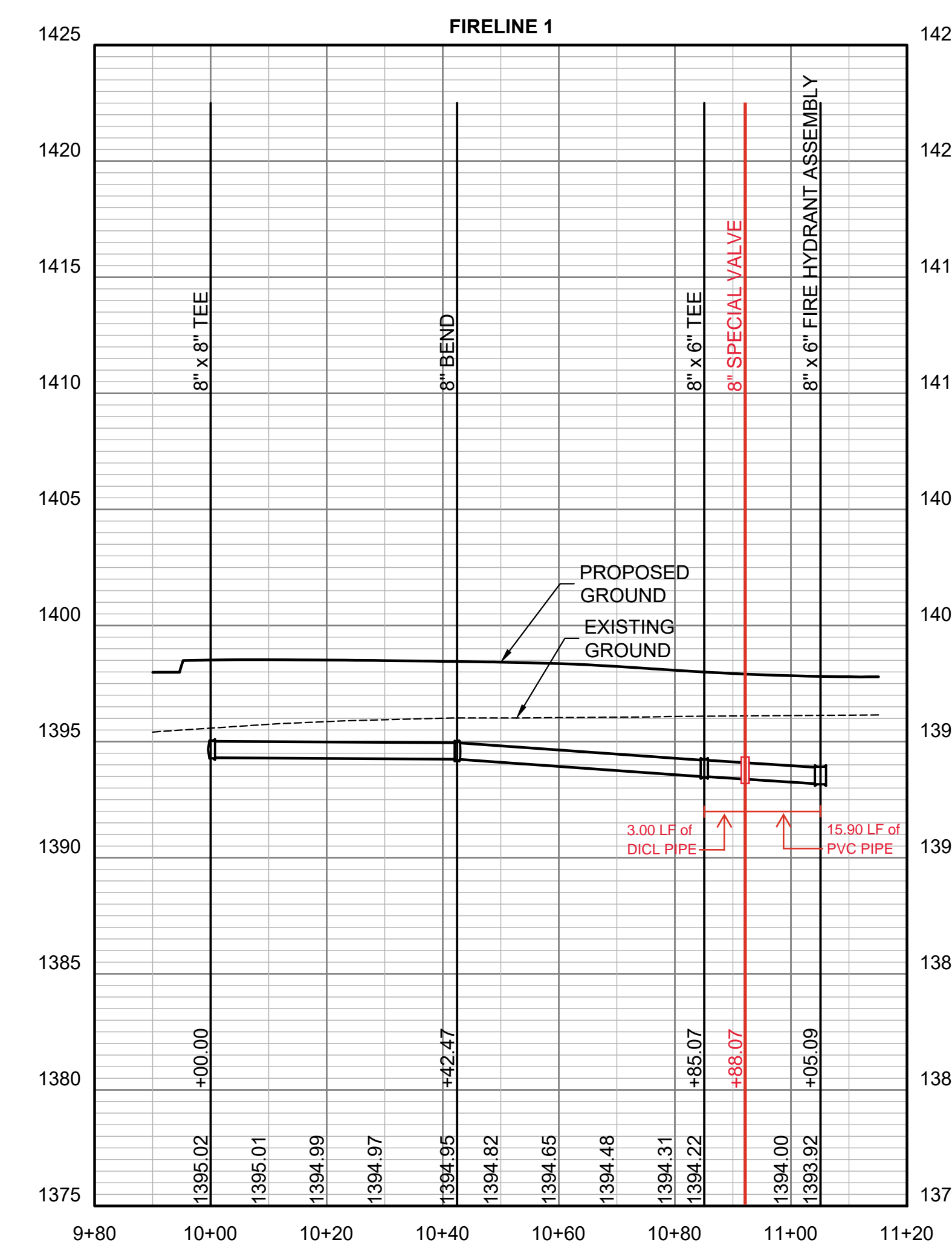
Project Status
 100% CONSTRUCTION DOCUMENTS



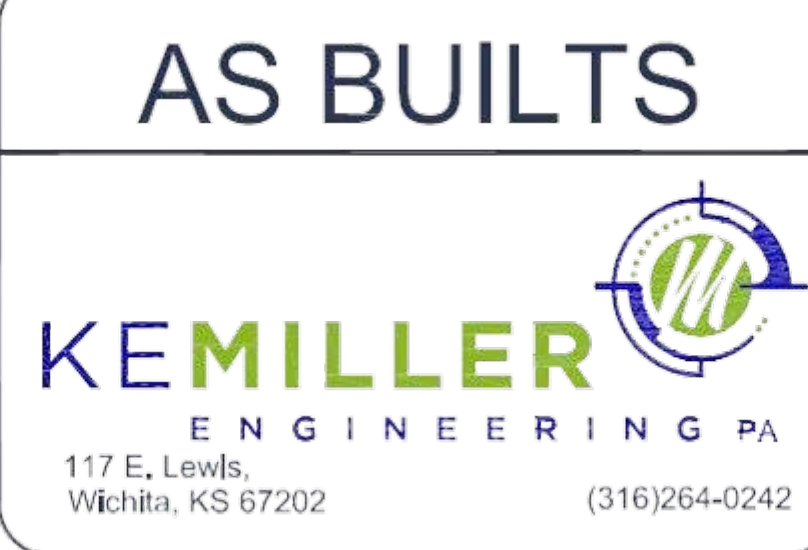
Reference Point (RP):
 Centerline of E 29th St. N & Greenwich Rd.

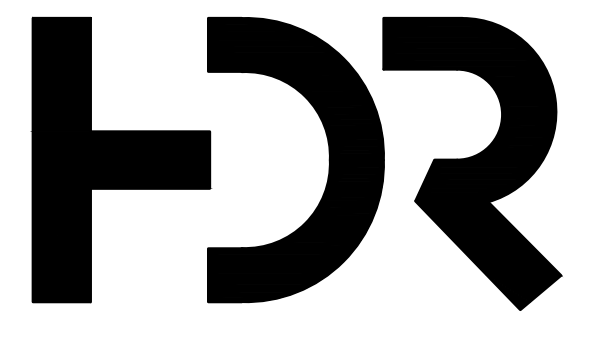
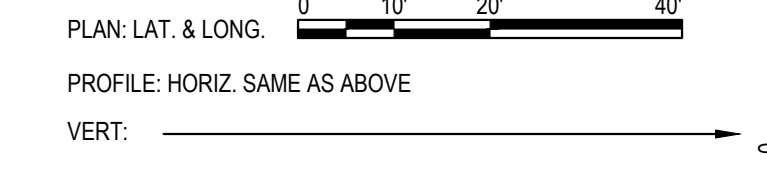
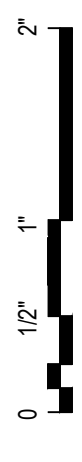
* PRIOR TO BEGINNING CONSTRUCTION, THE CONTRACTOR SHALL EXCAVATE THE PROPOSED FIRE LINE (BY OTHERS) TO VERIFY ITS HORIZONTAL AND VERTICAL LOCATION. THE WATERLINE LOCATION SHALL BE REPORTED TO THE ENGINEER SO THAT ANY NECESSARY PLAN MODIFICATIONS CAN BE MADE. ANY ADDITIONAL LABOR OR MATERIALS NECESSARY TO COMPLETE THE CONNECTION SHALL BE CONSIDERED SUBSIDIARY TO THE PROJECT.

Pipe Usage:
 - 8" C-900 = 99.60 LF
 - 8" DICL = 3.00 LF
 - 6" DIP = 2.00 LF



Line 1 From RP:
 (1)
 890.00' North & 330.58' East to 8" X 8" X 8" Tee
 892.50' North & 330.58' East to 8" Valve
 (2)
 973.50' North & 315.08' East to 8" X 8" X 6" Tee
 977.25' North & 315.08' East to 8" Special Valve
 (3)
 995.00' North & 310.33' East to Fire Hydrant Tee
 995.00' North & 307.83' East to Fire Hydrant Valve
 995.00' North & 305.00' East to Fire Hydrant Tee Cap
 997.50' North & 307.83' East to Tee Cap





HDR Architecture, Inc.
 Kansas City
 10450 Holmes Road,
 Suite 600
 Kansas City, Mo
 64131-3471



BOB D. CAMPBELL & CO.
 Structural Engineers Since 1957
 433B Bellevue Ave. 916.531.4144
 Kansas City, MO 64111 www.bdc-engr.com

Children's Mercy
 Hospital
 Wichita MOB
 Wichita, Kansas



Project Manager	HDR
Project Designer	HDR
Project Architect	HDR
Landscape Architect	HDR
Civil Engineer	PEC
Structural Engineer	BDC
Mechanical Engineer	PEC
Electrical Engineer	PEC
Plumbing Engineer	PEC
Interior Designer	HDR
Equipment Planner	HDR
Wayfinding	

MARK	DATE	DESCRIPTION
6	05-20-2025	COW COMMENTS

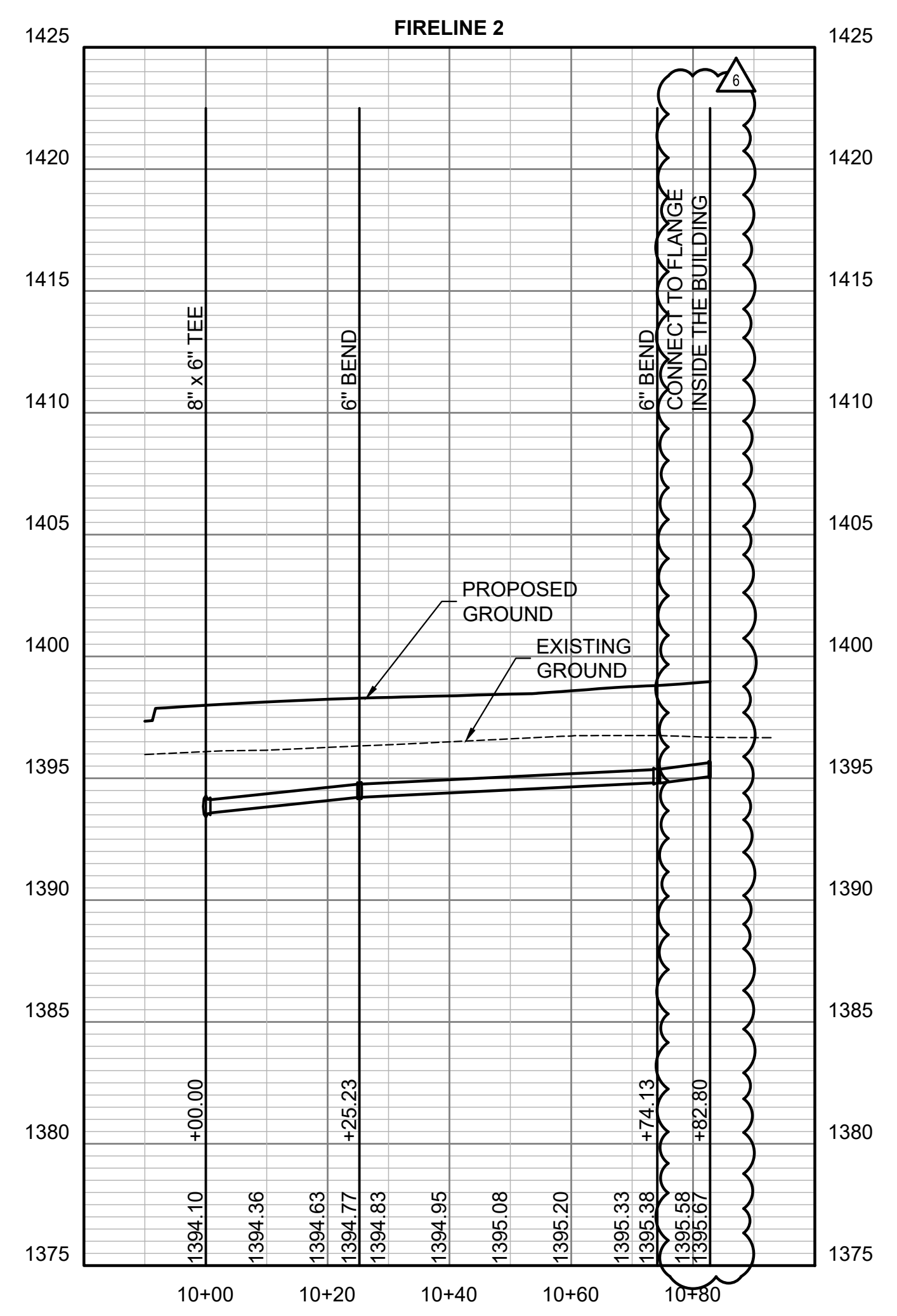
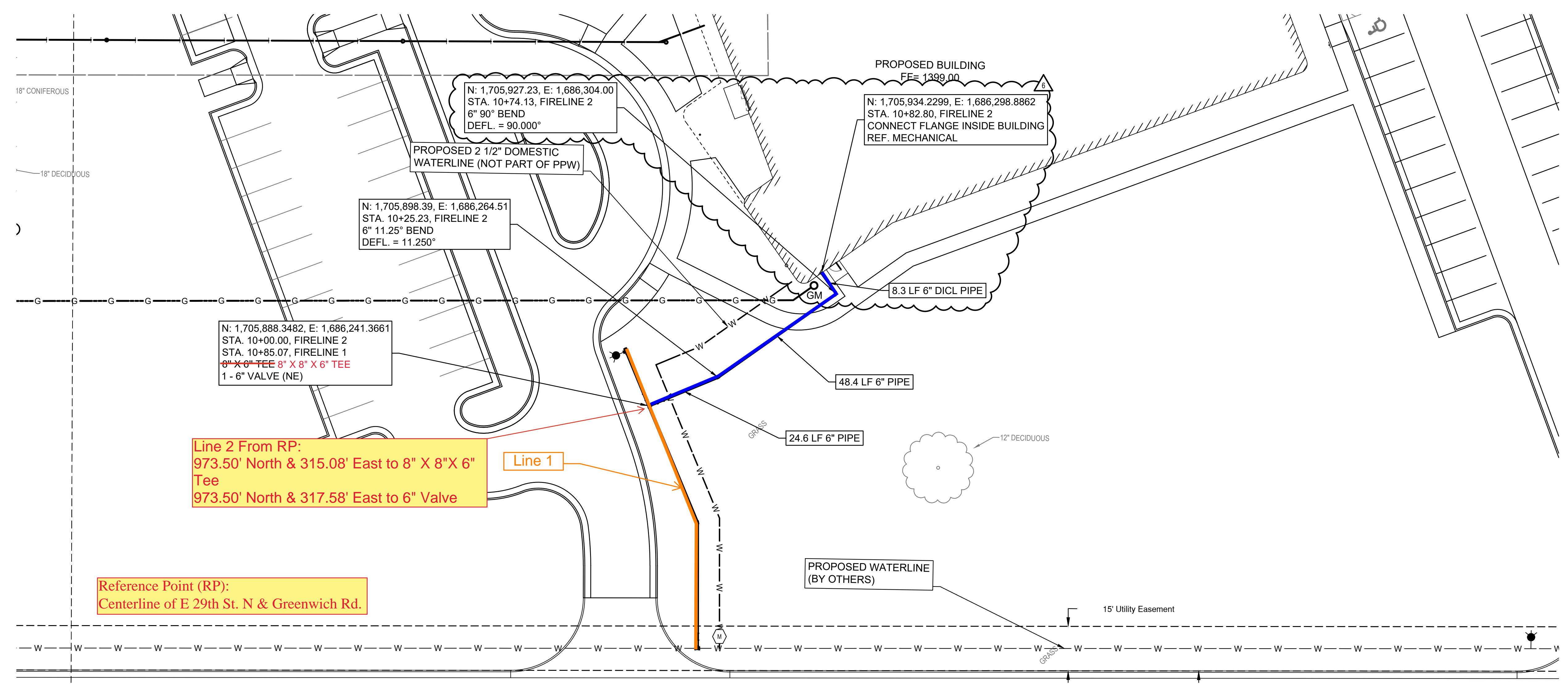
Project Number 240334-000
 Original Issue 02/12/2025



Sheet Name
FIRELINE 2 PLAN & PROFILE

Sheet Number
CU123

Project Status
 100% CONSTRUCTION DOCUMENTS



Pipe Usage:
 - 6" C-900 = 73.00 LF
 - 6" DIP = 8.30 LF

AS BUILTS

KEMILLER
 ENGINEERING PA
 117 E. Lewis
 Wichita, KS 67202 (316)264-0242

