

# GENERAL NOTES:

- The Contractor shall comply with all applicable safety regulations. All construction shall be completed following current City Standard Specifications and Special Provisions.
  - Maintain a minimum of 10-foot horizontal separation between all water lines (mains, services, and fire hydrants) and all sanitary sewer lines (mains, services, and manholes). All separation distances are to be measured from edge-to-edge, at the closest point.
  - Maintain a minimum of 2-foot vertical separation between all water lines (mains and services) and all gravity sanitary sewer lines (mains, services, and manholes) at crossings. All separation distances are to be measured from edge-to-edge, at the closest point.
  - Maintain a minimum of 2-foot vertical separation between all water lines (mains and services) and all pressurized sanitary sewer lines (force mains and services) at crossings. Waterlines must always be placed above pressurized sanitary sewer lines where they cross. All separation distances are to be measured from edge-to-edge, at the closest point.
- Contractor will be required to provide notice to utility companies a minimum of seventy-two (72) hours prior to any excavation, as follows:
 

Kansas One-Call 687-2470

The Contractor must notify the following in case of an emergency:

AT&T	1-800-246-8464
Black Hills Energy	1-800-694-8989
City of Wichita Water & Sewer	1-316-219-8921
City of Wichita Stormwater	1-316-268-4090
City of Wichita Traffic	1-316-268-4034
Cox Communications	1-888-249-3530
Kansas Gas Service	1-888-482-4950
Evergy	1-800-544-4857
- Utility service lines, poles, etc. are to be adjusted as necessary by others prior to construction unless the plans specifically call for their adjustment by the Contractor or unless the plans specifically identify a utility to be adjusted by its owner during construction. Existing utilities and their location, as shown on the plans, represent the best information obtainable for design. The Contractor will be required to work around existing utilities within the right-of-way which do not conflict with proposed construction.
- Rubble from the removal of miscellaneous structures and excess excavation which is to be wasted shall be disposed of on sites to be provided by the Contractor. These sites shall be approved by the Engineer as to suitability, appearance and site location. Locations, in the opinion of the Engineer, that will leave an unsightly appearance will not be approved. All disposal sites must be approved by the Kansas Department of Health and Environment. Material either stockpiled or disposed of in a flood plain will require a Kansas State Board of Agriculture permit. Any material dumped in waters of the United States or wetlands is subject to U.S. Corps. of Engineers permitting regulations. Any material buried or stockpiled beyond approved construction limits will require additional archeological investigations unless buried in a previously approved borrow location.
- Trees and shrubs in public right-of-way which are in direct conflict with proposed new construction shall be removed by the Contractor with the City Engineer's approval. Trees and shrubs which are not in direct conflict with proposed new construction shall be saved and protected from damage.
- The Contractor shall give all property owners and/or tenants of developed property abutting the construction of this project a minimum of ten (10) days notice prior to start of construction.
- The Contractor shall be responsible for preserving property irons. The Contractor will be required to re-establish any property irons which are damaged or destroyed by his construction operations. Such irons shall be re-established by a licensed land surveyor in accordance with state laws.
- The Engineering Division shall field locate water valve one time during construction when requested by the Contractor. It shall be the Contractor's responsibility to preserve such field locations during the construction process. Water valves, valve boxes or fire hydrants damaged during construction shall be repaired by Contractor at his own expense. Valve boxes and water meters within the project limits shall be adjusted to match field grades by the contractor.
- The Contractor shall notify the consultant engineer and Dawnita Reinhardt at 316-650-0740 with the City of Wichita with the anticipated construction start date and notify them of project completion. Staking and inspection for this project will be the responsibility of the Contractor.
- If traffic will be impacted by construction, a traffic control plan must be submitted and approved by the City Traffic Engineer at [traffic@wichita.gov](mailto:traffic@wichita.gov) before construction can begin. The Contractor shall be responsible for all traffic control measures to facilitate construction. All construction zone markings and signage shall conform to the latest version of Manual on Uniform Traffic Control Devices (MUTCD) as published by the US Dept. of Transportation, Federal Highway Administration. All costs associated with construction markings and signage shall be the Contractors responsibility.
- All elevations shown are NAVD88.
- All areas disturbed during construction that will not be under proposed pavement shall be restored to match existing conditions per City specifications.
- Any sidewalk, drive approach, curb, or street pavement removed to construct project must have a pavement cut permit and be replaced by the City contractor. Permits can be obtained by calling 316-268-4501 or 316-268-4480.
- All applicable fees (tap, equity, in lieu of & main benefit) must be paid before any work on this project can commence. Quotes can be obtained on fees by calling Chris Stone at 316-268-4641.
- City maintenance of water mains ends at tapping valve.
- Opening and closing of water valves shall be done slowly to prevent damage to the water distribution system from water hammer. All valves closed by the contractor must be reopened as new construction permits. The project inspector must ascertain that any valve closed by the Contractor is reopened. The contractor will be permitted to operate water valves only when the project inspector assigned to the project is present.
- The Contractor shall lay a Tracer Wire and Set Test Stations along all water pipe installed in accordance with City Specifications and Tracer Wire Detail on detail sheet WL-101, cost is subsidiary to pipe installation.
- The contractor shall provide materials for temporary blowoff of waterlines. Connections to the existing waterline(s) shall be made with clean, swabbed pipe and flushed upon completion of tie-ins.
- Requests for short term water interruptions shall be made to the City Water Distribution Division and will be subject to their approval. The Contractor shall give written notice to any property owner, business, and/or tenants that will have water service interrupted at least 5 days in advance. Such notifications should indicate the time and date that the water will be turned off and when the service will be restored. No business, property owner, and/or tenants shall be without water service for more than 8 hours. Proposed tie in locations which will affect water service to property owners shall be performed during non-peak hours.
- The Contractor must schedule the connections to the existing main with the City such that there is a minimum disruption of service. Connections shall be made during periods of low water usage. The Contractor shall submit his proposed schedule for completing work for City approval at least 10 days prior to beginning construction.
- Deflections at pipe joint or couplings shall not exceed the pipe manufacturers recommended maximum. Where deflections are greater than the maximum allowed, the contractor shall utilize fittings.
- Any existing joint exposed during excavation shall be replaced if within four feet of proposed joint.
- All wet taps shall be installed by the City of Wichita. The Contractor will reimburse the City for tapping fees prior to tap being made. Unless noted on plans.
- The Contractor shall protect from damage and support existing utilities through construction as approved by the utility owner and the Engineer at the contractor's expense.
- Wichita Fire Department inspections may be scheduled by calling Dawnita Reinhardt at 316-650-0740.
- All existing and proposed erosion control measures including silt fencing, erosion control mat, straw bales, inlet barriers, and const. entrance shall be maintained throughout construction by the contractor and until project is accepted by the City of Wichita. The on-site engineer shall complete weekly reports on the status of erosion control measures. The contractor shall be required to comply with maintenance and/or replacement of erosion control measures as determined by the on-site engineer until project is accepted by City of Wichita. Maintenance and/or replacement of erosion control measures to be paid by L.S. bid item "Maintain Existing BMPs".
- The Contractor shall not begin work on the project until the Project Inspector is assigned and on site. Any work completed without inspection will be required to be uncovered for inspection at the Contractor's expense.

## Benchmark

BM #1: "□" at back of curb on centerline of driveway W. side of St. Francis, ~192' south of First St. Elevation = 1299.55 (NAVD88)

Utility Contractor: Action Heating, Cooling, & Plumbing.  
 Superintendent: Andrew Semple  
 Inspection: Baughman Company  
 Inspector: Jeff Priddle  
 As-Built Plans: Larry Powell & Jeff Priddle  
 October 9, 2025

6" PVC Pipe = Westlake.  
 6" DICI Pipe = US Pipe.

# AS-BUILT PLANS

## WATER DISTRIBUTION SYSTEM

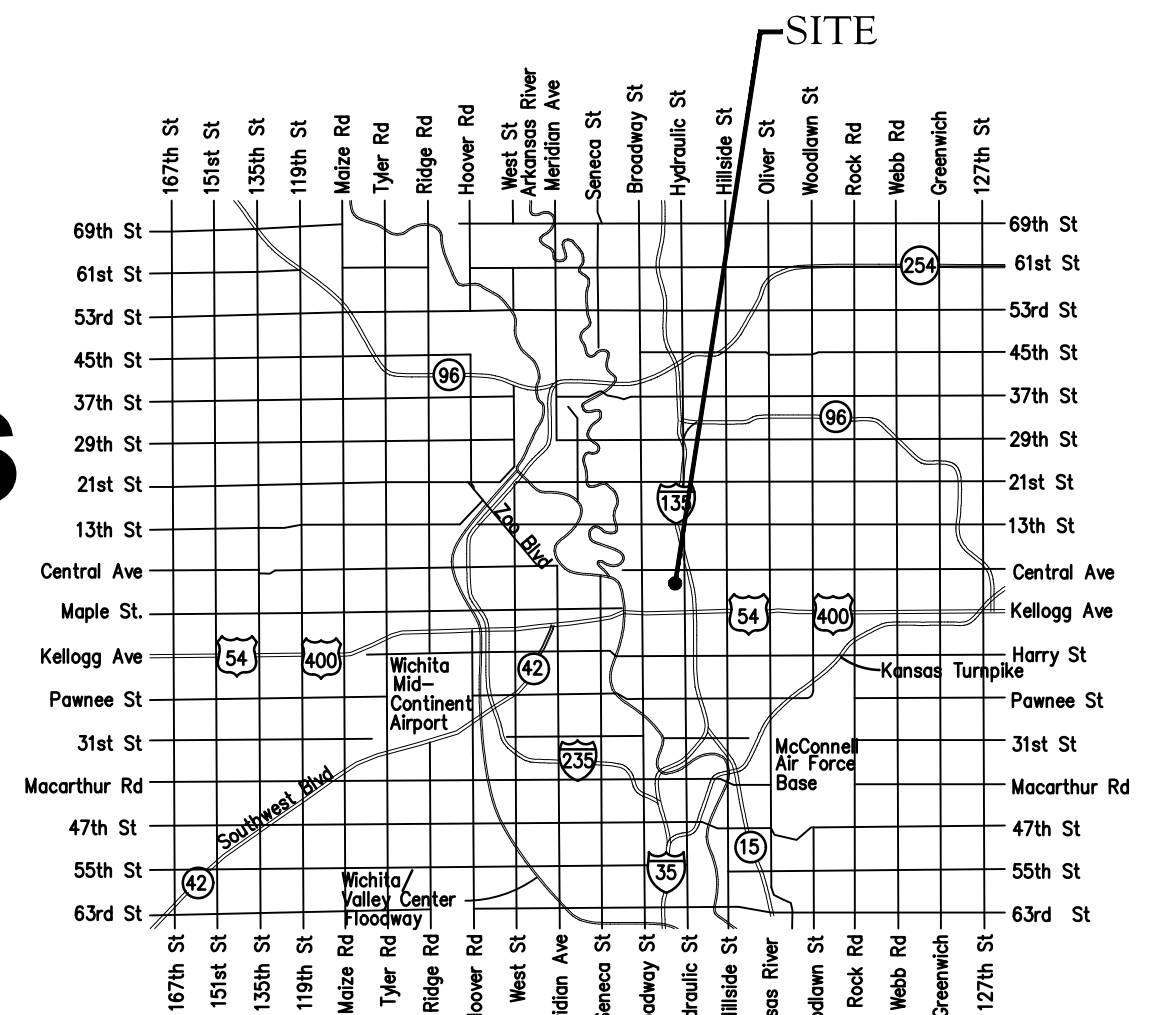
to serve

# 132-134 N. ST. FRANCIS

## CITY OF WICHITA, KANSAS

Paul Gunzelman, P.E. City Engineer  
 2025-010417PPW  
 54030980

Baughman Job No.: 25-08-E191



## Vicinity Map

Construction Began: 7 August 2025  
 Construction Ended: 19 September 2025

## Sheet Index

Title Sheet	1
Line 1	2
Erosion Control Plan	3
Std. Water Assembly Detail	4
Miscellaneous Water Details	5
Erosion Control BMP Details	6-10
Copy of Plat	11

APPROVED AS NOTED  
 BY WICHITA PUBLIC WORKS  
 ENGINEERING DIVISION  
 & BY WICHITA FIRE DEPARTMENT

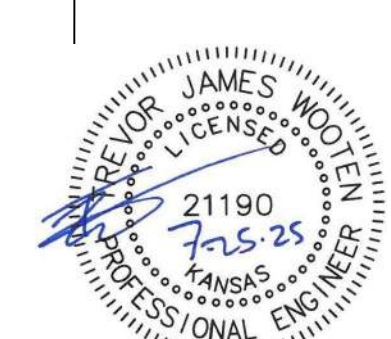
Engineering approved by Shawn Mellies on 07.24.25  
 Utilities approved by Greg Lolley on 07.24.25  
 Fire Dept. approved by Jose Ocadiz on 07.24.25

NOTE TO CONTRACTORS

Public Property:  
 Inspection and testing for the waterline is to be provided by a Licensed Consulting Engineering Firm under contract with the Owner/Developer. Said inspection is to be in accordance with the City of Wichita standard construction engineering practices and certified by a Professional Engineer Licensed in the state of Kansas. No work shall be performed in dedicated easements or public right-of-way by the Contractor without such inspection nor shall any work be commenced without written authorization by City Engineering. All Construction and Materials shall comply with the City of Wichita Specifications and Standards and Special Provisions (on file and available in the City Engineer's Office) or on the City's Website.

Private Property:  
 Installation and testing for the fire protection line is to be performed by a City of Wichita licensed fire protection contractor in accordance with the fire codes as adopted by the City of Wichita. All material and construction practices for the fire protection line shall comply with the fire codes as adopted by the City of Wichita (available from the City of Wichita Fire Department). The Contractor shall not commence work without notification and approval of the Wichita Fire Department. Inspection of the fire protection line is to be provided by a licensed Engineering Firm under contract with the Owner/Developer and the Fire Department. The contractor shall not start work until the project inspector is assigned to the project and present on the site. Any work done without inspection will be required to be uncovered for inspection.

An approved copy of these plans signed by City staff are required on-site.



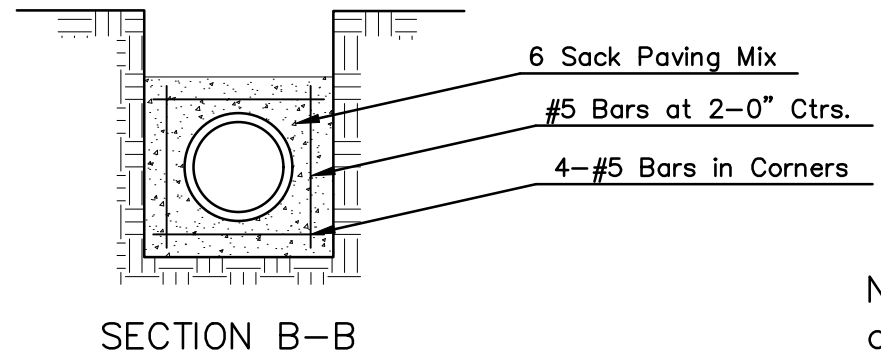
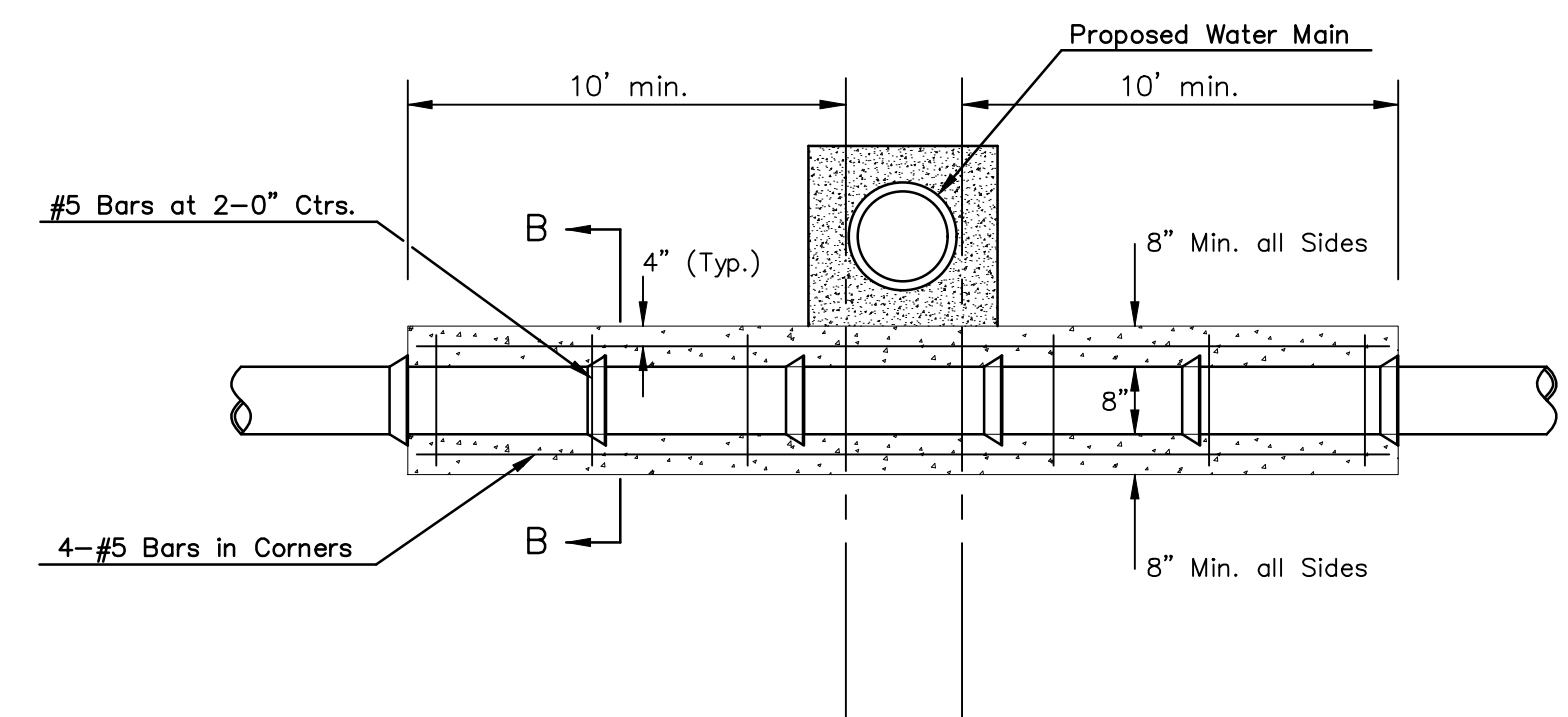
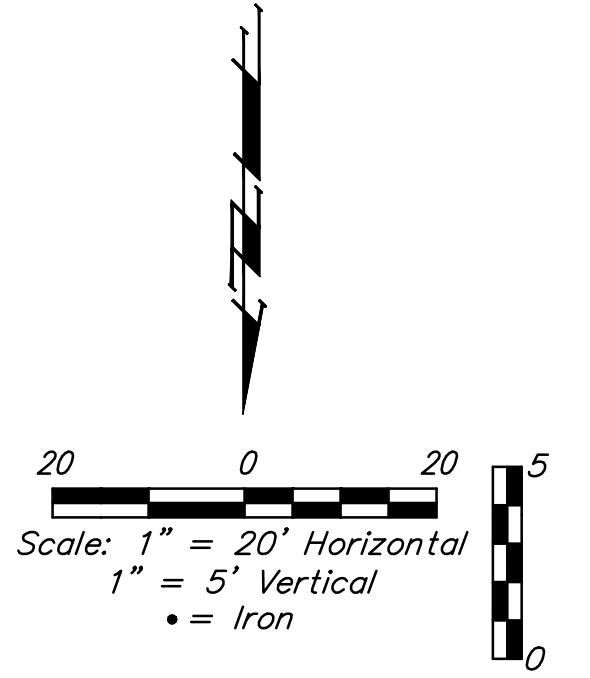
July 24, 2025

**BAUGHMAN COMPANY**  
 315 Ellis St. Wichita, KS 67211 316-262-7271  
 BaughmanCo.com

E:\Projects\132-134 N. St. Francis (25-08-E191)\Engineering\PPW\PPW.dwg

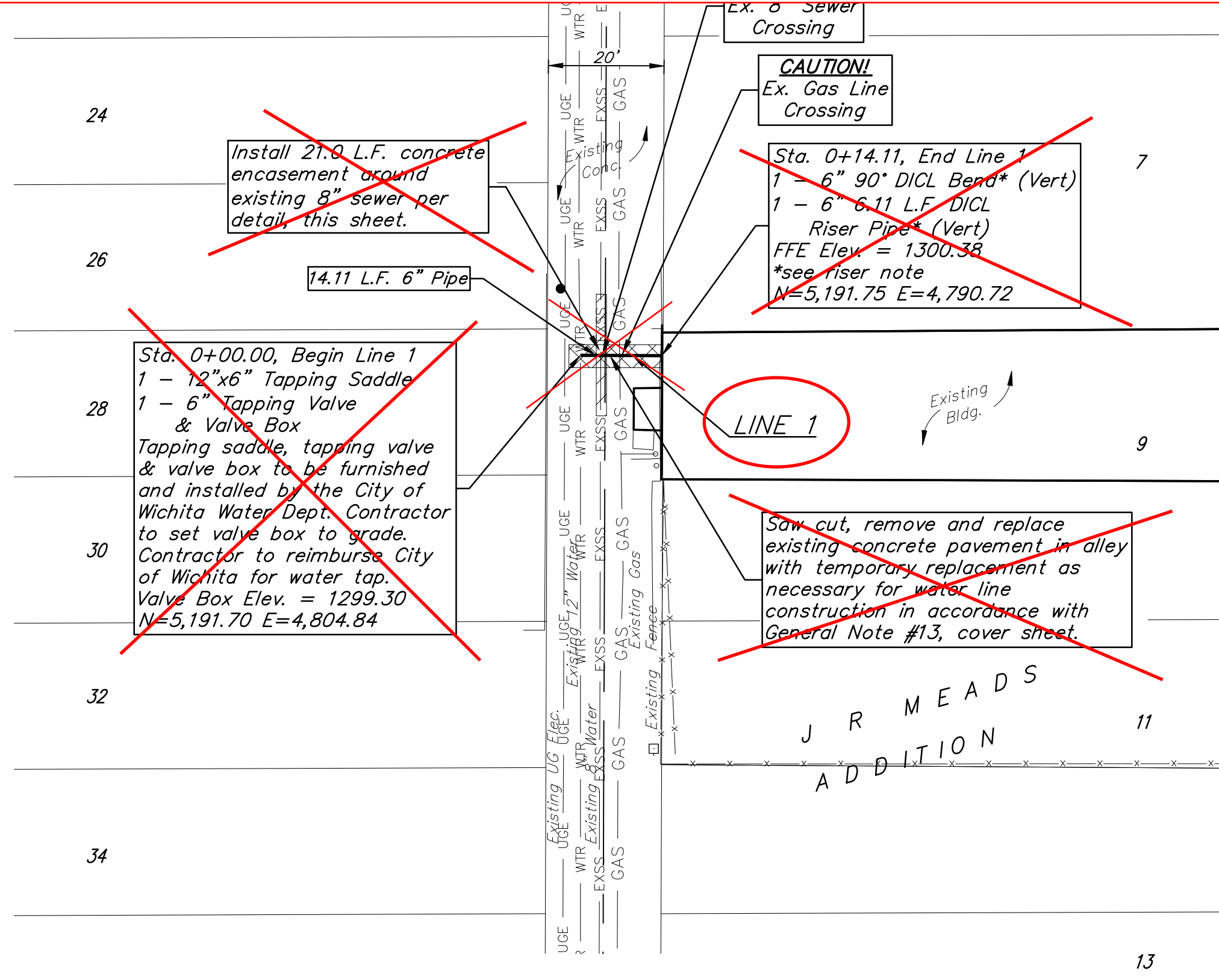
**BENCHMARK:**  
 BM #1: "□" at back of curb on centerline of driveway W. side of St. Francis, ~192' south of First St. Elevation = 1299.55 (NAVD88)

**SEE SHEET 2-A FOR AS-BUILT SKETCH OF RELOCATED LINE 1.**



Note: Encasement to begin and end at a Bell on Sanitary Sewer Pipe.

REINFORCED CONCRETE ENCASEMENT OF SANITARY SEWER

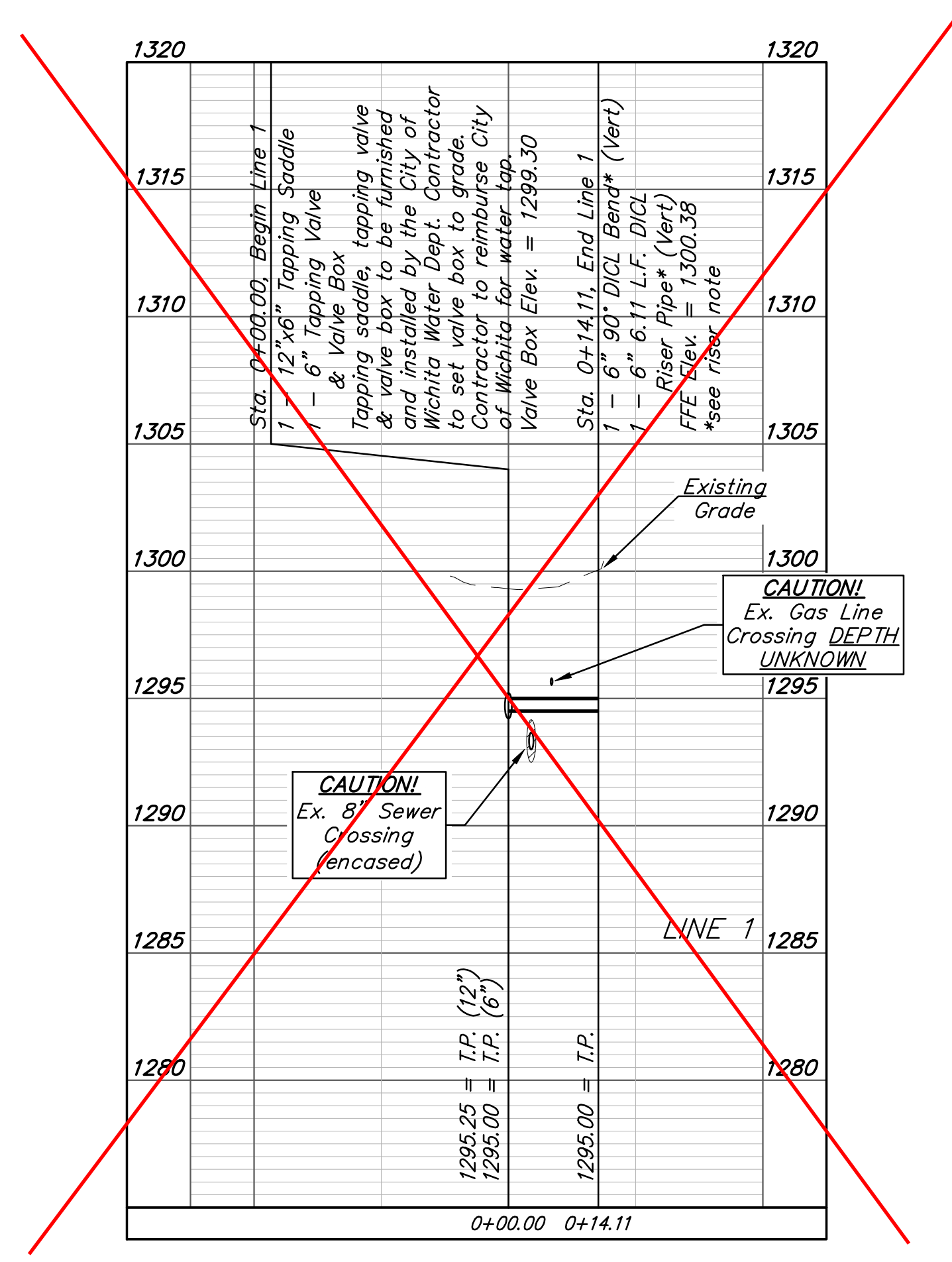


**\* Riser Note:**  
 Contractor to install DICL pipe a minimum 5' outside Building. DICL riser pipe, CIMJ Bend, & DICL horizontal section exiting building foundation wall are to be mega-lugged together and riser is to be extended 12" above Building FFE. Riser location is approximate, building GC is required to locate Riser location per the foundation requirements. Contractor to install blind flange with 2" tap for testing. Remove flange & tap upon acceptance.

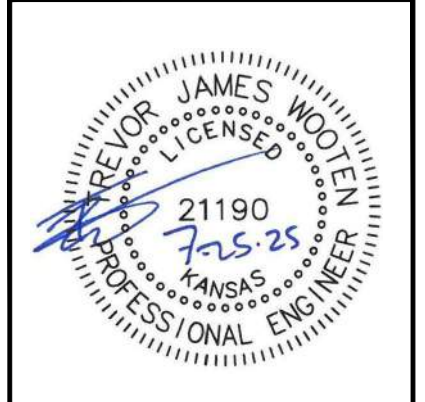
Contractor to verify depth and location of existing utilities. Contractor to relocate any existing utilities as necessary for construction.

Contact utility companies 3 weeks prior to construction to coordinate temporary removal/replacement.  
 Heide Bryan, Evergy, (316) 261-6354  
 Shannon Brinkmeyer, AT&T (316) 268-2931  
 Travis Taylor, Cox Comm., Travis.taylor@cox.com

**NOTE:**  
 NEW FIRE SERVICE LINE 1 ALIGNMENT WAS RELOCATED. LINE 1 NOW ENTERS THE BUILDING ON THE NORTH SIDE - MIDDLE.  
 SEE SHEET 2-A FOR DETAILS.



**DEPTH UNKNOWN**  
 Contractor to Verify Depth & Location of Existing Water Line Prior to Construction.



**BAUGHMAN COMPANY**  
 315 Ellis St.  
 Wichita, KS 67211  
 316-262-7271  
 BaughmanCo.com

132-134 N. ST. FRANCIS

**LINE 1**

WATER DISTRIBUTION SYSTEM

PROJECT NUMBER:  
25-03-E061

DESIGN: TJW DRAWN: TMS

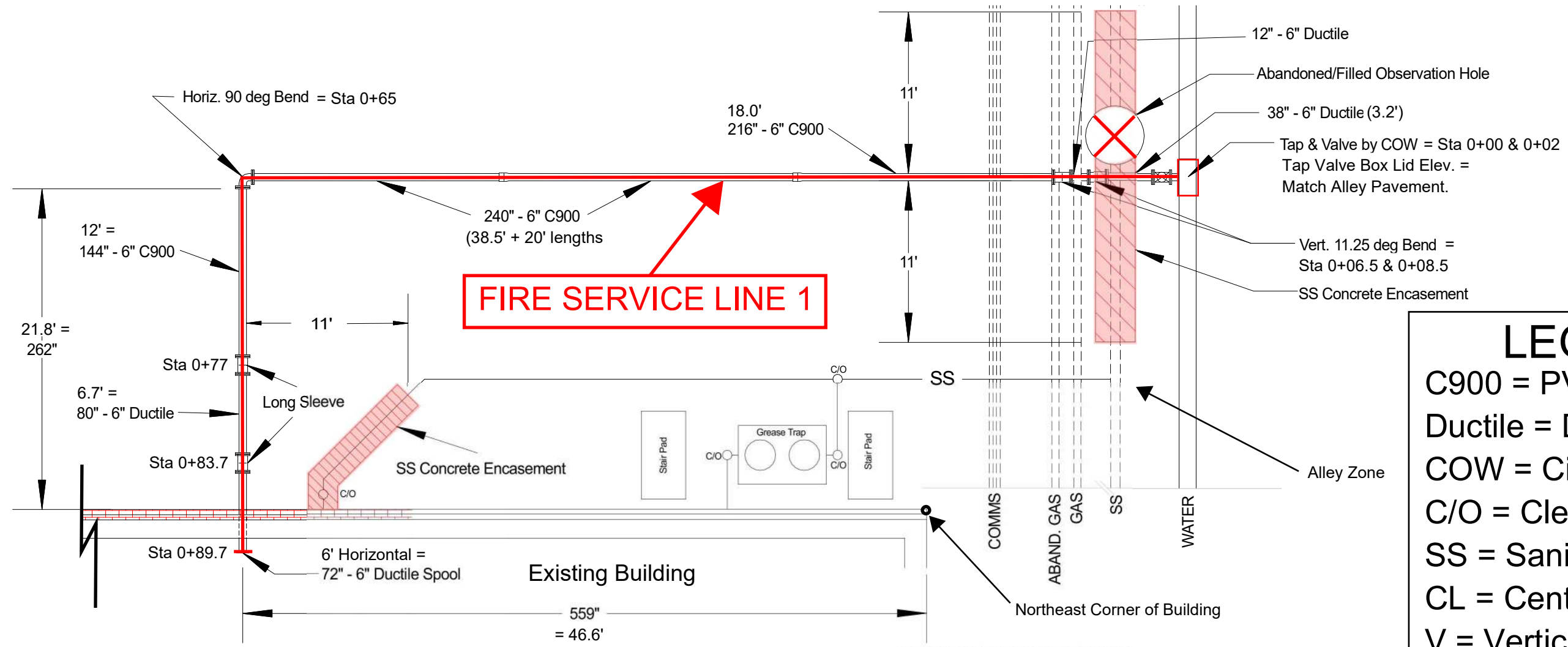
DATE: July 24, 2025

SHEET **2** OF **11**

File: E:\Projects\132-134 N. St. Francis (25-03-E061)\Engineering\PP\PPW.dwg

# AS - BUILT SKETCH OF RELOCATED LINE 1

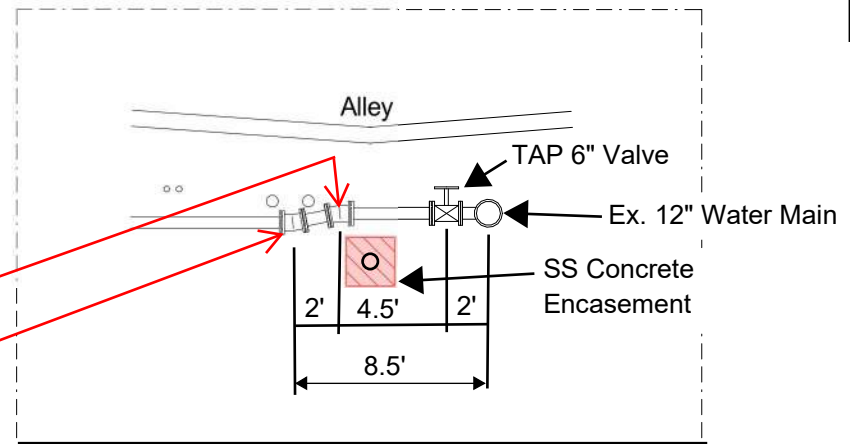
CL N. St. Francis St.



**FIRE SERVICE LINE 1**

**PLAN VIEW**

From CL 1st St. & N. St. Francis St.:  
**TAP SLEEVE = 240' S. & 195' E.**  
**6" TAP VALVE = 240' S. & 193' E.**  
**11.25o BEND (V) = 240' S. & 188' E.**  
**11.25o BEND (V) = 240' S. & 186' E.**



**PROFILE VIEW (looking North)**

**LEGEND**  
 C900 = PVC Pipe.  
 Ductile = DICTL Pipe.  
 COW = City of Wichita.  
 C/O = Clean Out.  
 SS = Sanitary Sewer.  
 CL = Centerline.  
 V = Vertical.

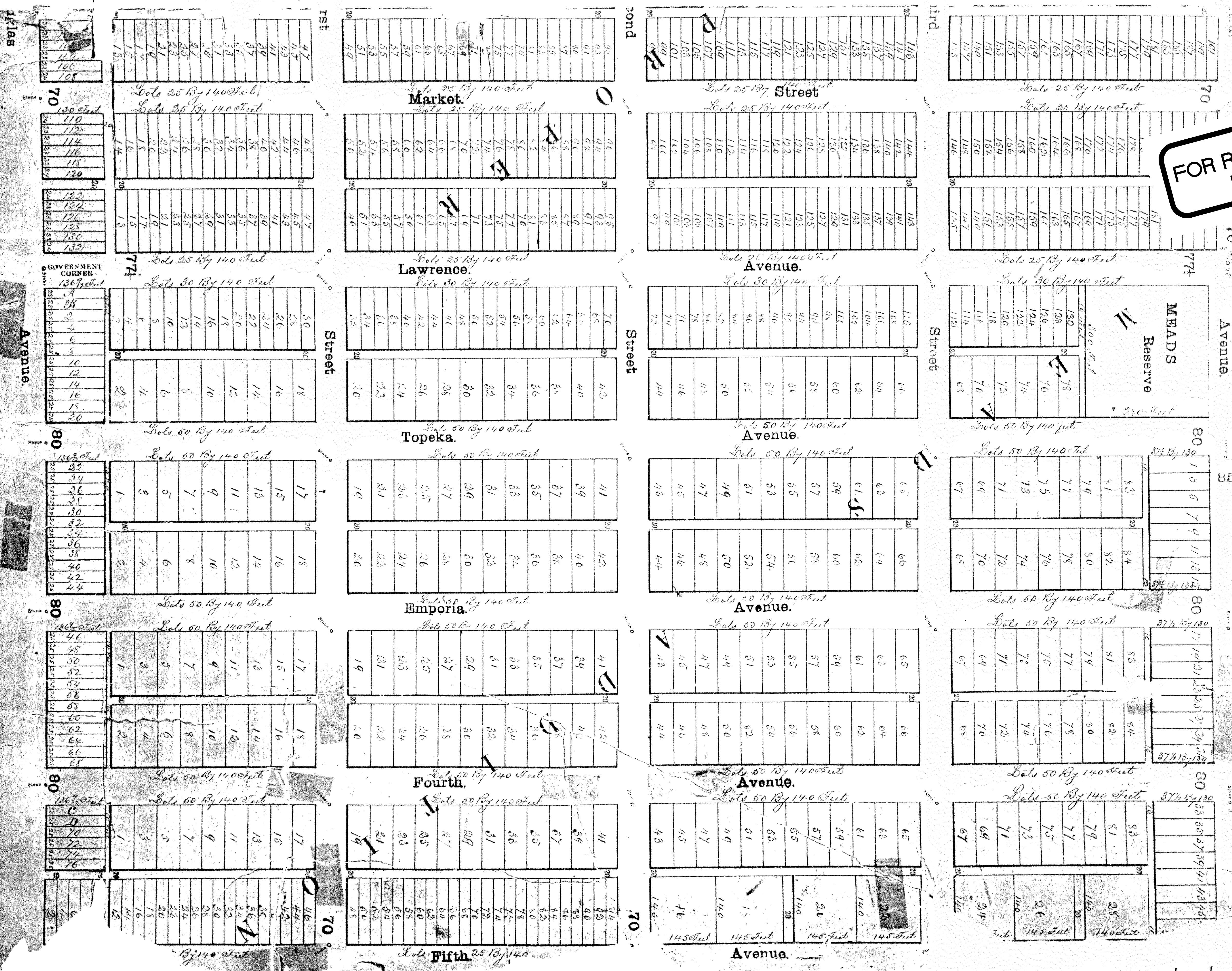
**NOTE**  
 1) End of Tracer Wire left near TAP Valve & end of Pipe Spool inside building.

PROJECT: 132-134 N. St. Francis (Prost).  
 COW PROJECT #: 2025-010417 PPW.  
 6" FIRE SERVICE LINE.

**SHEET 2-A**



**FOR REFERENCE ONLY  
NOT TO SCALE**



**LIBRARY COPY**  
SEDGWICK COUNTY, KANSAS  
REGISTER OF DEEDS  
LARRY CONSOLVER

**BAUGHMAN COMPANY**  
315 Ellis St.  
Wichita, KS 67211  
316-262-7271  
BaughmanCo.com

132-134 N. ST. FRANCIS

**COPY OF PLAT**

WATER DISTRIBUTION SYSTEM  
PROJECT NUMBER:  
25-03-E061  
DESIGN: DRAWN:  
DATE: April 30, 2025  
SHEET 11 OF 11

M-1 6-1

File: E:\Projects\132-134 N. St. Francis (25-03-E061)\Engineering\PP\PPWP.dwg