

GENERAL NOTES:

- The Contractor shall comply with all applicable safety regulations. All construction shall be completed following current City Standard Specifications and Special Provisions.
- Contractor will be required to provide notice to utility companies a minimum of seventy-two (72) hours prior to any excavation, as follows:
 Kansas One-Call 687-2470
 The Contractor must notify the following in case of an emergency:
 AT&T 1-800-245-8464
 Black Hills Energy 1-800-694-8989
 City of Wichita Water & Sewer 1-316-219-8921
 City of Wichita Stormwater 1-316-268-4090
 City of Wichita Traffic 1-316-268-4034
 Cox Communications 1-888-249-3530
 Kansas Gas Service 1-888-482-4950
 Energy 1-800-544-4857
- Utility service lines, poles, etc. are to be adjusted as necessary by others prior to construction unless the plans specifically call for their adjustment by the Contractor or unless the plans specifically identify a utility to be adjusted by its owner during construction. Existing utilities and their location, as shown on the plans, represent the best information obtainable for design. The Contractor will be required to work around existing utilities within the right-of-way which do not conflict with proposed construction.
- Rubble from the removal of miscellaneous structures and excess excavation which is to be wasted shall be disposed of on sites to be provided by the Contractor. These sites shall be approved by the Engineer as to suitability, appearance and site location. Locations, in the opinion of the Engineer, that will leave an unsightly appearance will not be approved. All disposal sites must be approved by the Kansas Department of Health and Environment. Material either stockpiled or disposed of in a flood plain will require a Kansas State Board of Agriculture permit. Any material dumped in waters of the United States or wetlands is subject to U.S. Corps. of Engineers permitting regulations. Any material buried or stockpiled beyond approved construction limits will require additional archaeological investigations unless buried in a previously approved borrow location.
- Trees and shrubs in public right-of-way which are in direct conflict with proposed new construction shall be removed by the Contractor with the City Engineer's approval. Trees and shrubs which are not in direct conflict with proposed new construction shall be saved and protected from damage.
- The Contractor shall give all property owners and/or tenants of developed property abutting the construction of this project a minimum of ten (10) days notice prior to start of construction.
- The Contractor shall be responsible for preserving property irons. The Contractor will be required to re-establish any property irons which are damaged or destroyed by his construction operations shall be re-established by a licensed land surveyor in accordance with state laws.
- The Engineering Division shall field locate water valves one time during construction when requested by the Contractor. It shall be the Contractor's responsibility to preserve such field locations during the construction process. Water valves, valve boxes or fire hydrants damaged during construction shall be repaired by Contractor at his own expense. Valve boxes and water meters within the project limits shall be adjusted to match final grades by the contractor.
- The Contractor shall notify the inspecting engineer and Dawnita Reinhardt at 316-650-0740 with the City of Wichita with the anticipated construction start date and notify them of project completion. Staking and inspection for this project will be the responsibility of the Contractor.
- If traffic will be impacted by construction, a traffic control plan must be submitted and approved by the City Traffic Engineer, Mike Armour at traffic@wichita.gov before the Contractor shall be responsible for all traffic control measures to facilitate construction. All construction zone markings and signage shall conform to the latest version of the Manual on Uniform Traffic Devices (MUTCD) as published by the US Dept. of Federal Highway Administration, associated with construction markings and signage shall be Contractors responsibility.
- All elevations shown are NAVD 88.
- All areas disturbed during construction that will not be under proposed pavement shall be restored to match existing conditions.
- Any sidewalk, drive approach, curb, or street pavement removed to construct project must have a pavement cut permit and be replaced by the City contractor. Permits can be obtained by calling 316-268-4501 or 316-268-4480.
- All applicable fees (tap, equity, in lieu of & main benefit) must be paid before any connections can be made on this project. 316-268-4555.
- City maintenance of water mains ends at right-of-way or easement line or within two feet of vault.
- Maintain a minimum of 10-foot horizontal separation between all water lines mains, Services, and fire hydrants) and all sanitary sewer lines (mains, services, and manholes). All separation distances are to be measured from edge-to-edge at the closest point.
- Maintain a minimum of 2-foot vertical separation between all water lines (mains and services) and all gravity sanitary sewer lines (mains, services, and manholes) at crossings. All separation distances are to be measured from edge-to-edge, at the closest point.
- Maintain a minimum of 2-foot vertical separation between all water lines (mains and services) and all pressurized sanitary sewer lines (force mains and services) at crossings. waterlines must always be placed above pressurized sanitary sewer lines where they cross. All separation distances are to be measured from edge-to-edge at the closest point.

WATER MAIN IMPROVEMENTS TO SERVE MESSIAH BAPTIST CHURCH 4TH ADDITION

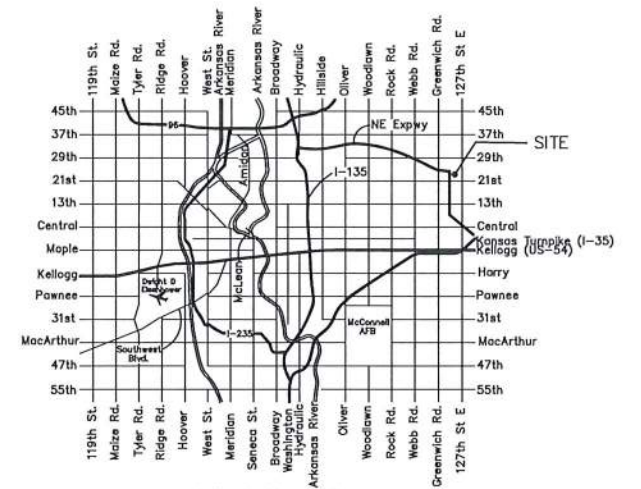
12200 East 21st. N., Wichita, KS 67206

Private Project Number: 2025-011750 PPW (54030980)

CITY OF WICHITA, KANSAS

Paul Gunzelman, P.E. City Engineer

June, 2025

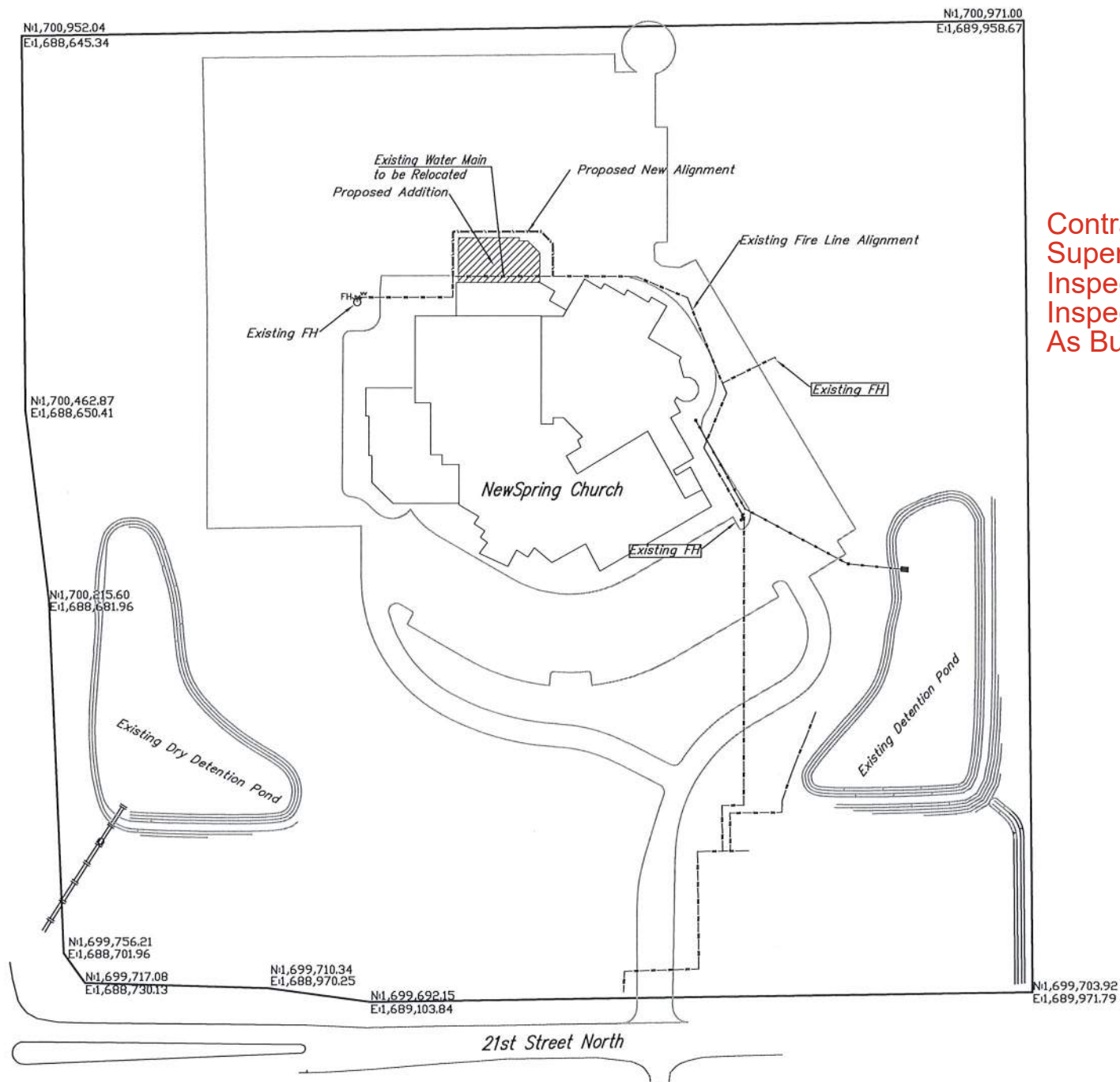


Vicinity Map

Index

- Cover Sheet
- Plan/Profile Sheet
- Standard Water Assembly Detail
- Erosion - SW-501 Details
- Erosion - SW-502 Details
- Erosion - SW-503 Details
- Erosion - SW-504 Details
- Erosion - SW-505 Details

Contractor: Fremar Corporation, LLC
Superintendent: Bill Budd
Inspector: Brian Peltier
Inspection Company: Merestone Surveying, LLC
As Built Plans 9/12/25



APPROVED AS NOTED
 BY CITY ENGINEER OF WICHITA

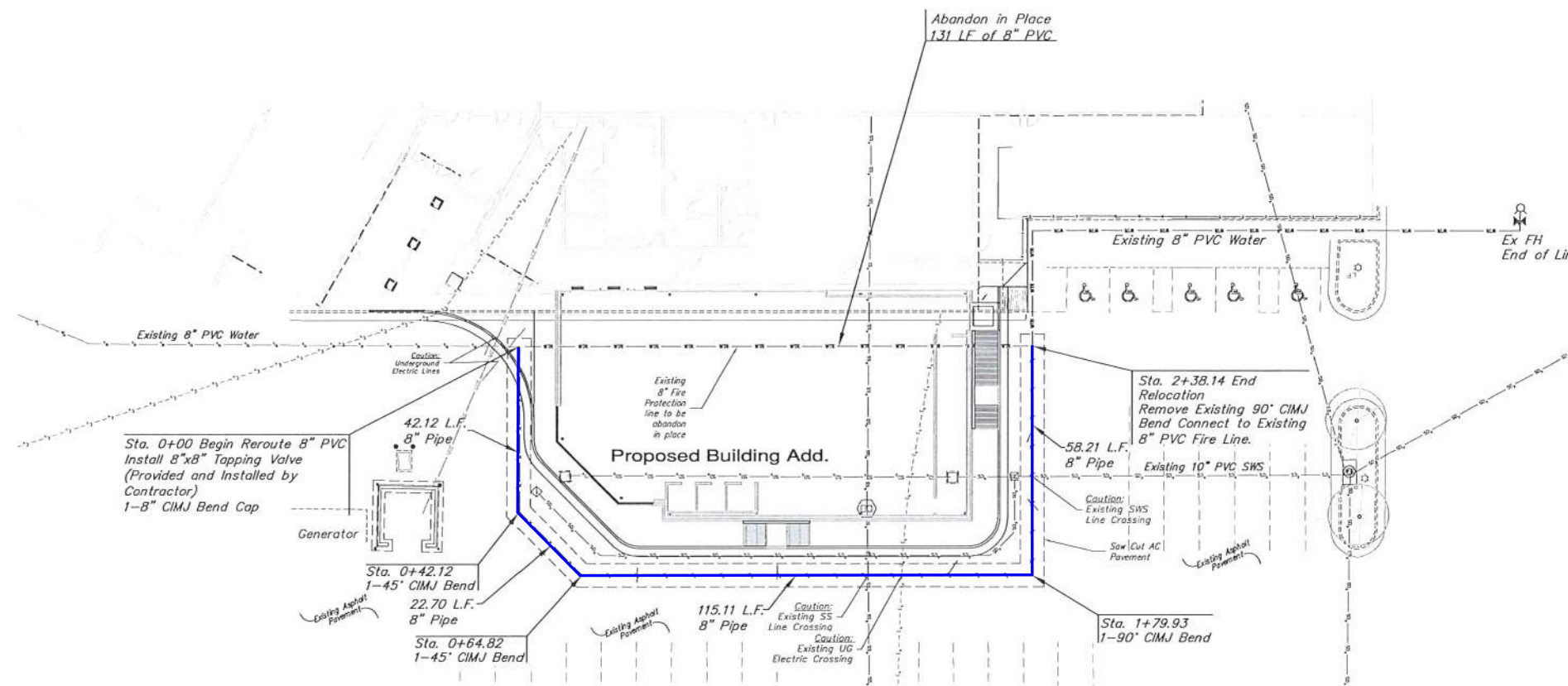
Engineering Shawn Mellies 6/16/25

Utilities Greg Lalley 6/16/25

Fire Department Jose Ocadiz 6/16/25

NOTE TO CONTRACTORS
 Installation, Inspection and Testing for this project is to be provided by a Licensed Consulting Engineering Firm under contract with the Owner/Developer. Said inspection to be in accordance with the City of Wichita Standard Construction Engineering Practices and certified by a Licensed Professional Engineer. No work shall be performed in dedicated easements or public right-of-way by the Contractor without such inspection nor shall any work be commenced without written authorization by the City Engineer. All Construction and Materials shall comply with the City of Wichita Specifications and Standards (on file and available in the City Engineer's Office).

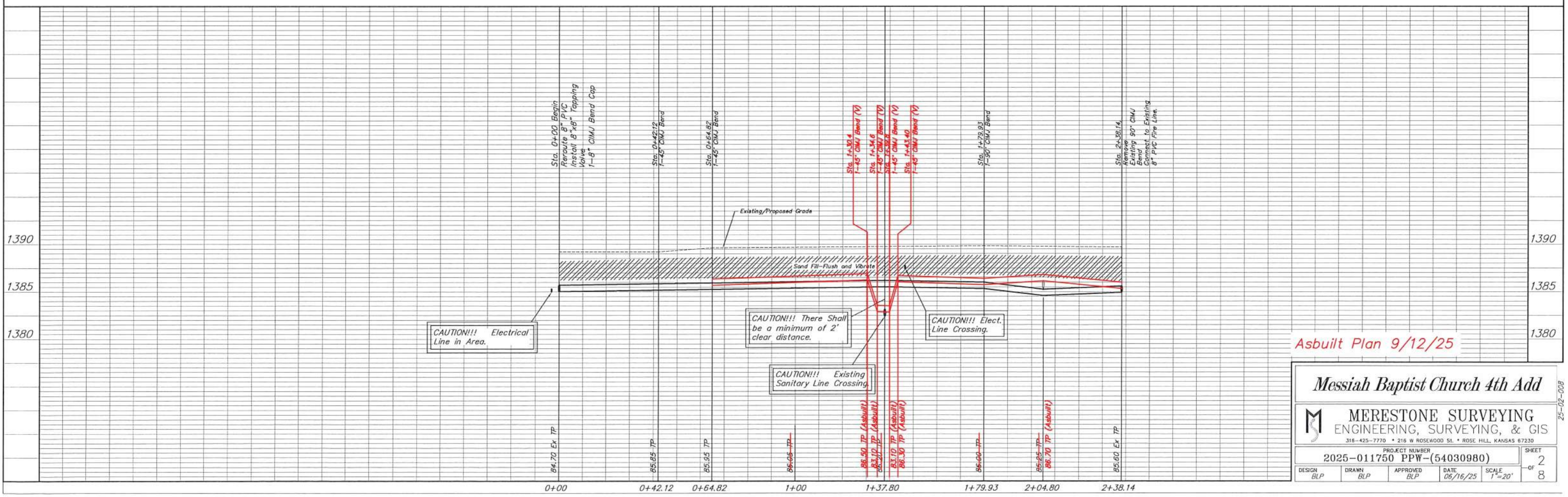
June, 2025



SCALE:
 1" = 20' HORIZONTAL
 1" = 5' VERTICAL



Built Per plan except where noted.



Asbuilt Plan 9/12/25

Messiah Baptist Church 4th Add

MERESTONE SURVEYING
 ENGINEERING, SURVEYING, & GIS
 318-425-7770 • 218 W ROSEWOOD ST. • ROSE HILL, KANSAS 67230

PROJECT NUMBER: 2025-011750 PPW-(54030980)

DESIGN: BLP DRAWN: BLP APPROVED: BLP DATE: 06/16/25 SCALE: 1"=20'

SHEET 2 OF 8

25-02-008