

PROJECT NO.: 0325

AAB Engineering, LLC

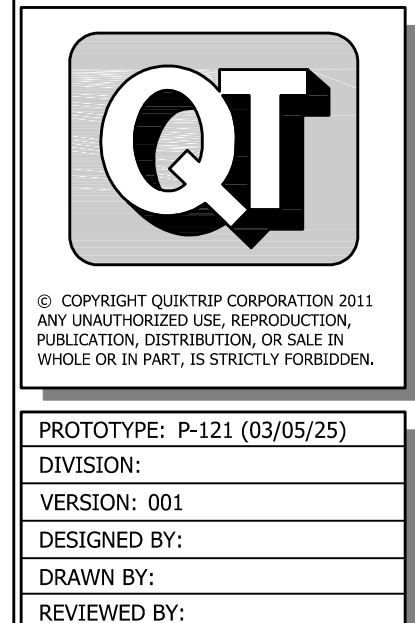
**AAB**

Engineering • Surveying

P.O. Box 2136  
Sand Springs, OK 74063  
KS CA#2292 Exp. Dec. 31, 2026  
Office: (918) 514-4283  
Fax: (918) 514-4288

**QuikTrip No. 0325**

1668 S 135TH ST W  
Wichita, KS



REV	DATE	DESCRIPTION	ORIGINAL ISSUE DATE:

SHEET TITLE:  
COVER SHEET

SHEET NUMBER:  
**WL1**

# AS-BUILT PLANS

## WATER DISTRIBUTION SYSTEM

to serve

# QUIKTRIP STORE #0325

## 1668 S 135TH ST W

## CITY OF WICHITA, KANSAS

Utility Contractor: Wildcat Construction  
Superintendent: Greg Breit  
Construction Staking: Baughman Co.  
Inspection: Baughman Co.  
Inspector: James Ralston

As-Built By: Larry Powell & James Ralston  
As-Built Date: November 5, 2025

### Sheet Index

WL1	TITLE SHEET
WL2	WATERLINE PLAN
SW501	BACK OF CURB PROTECTION, CURB INLET PROTECTION, AND CONSTRUCTION ENTRANCE
SW502	SILT FENCE DITCH CHECK AND BARRIER DETAILS
SW503	STRAW BALE DITCH CHECK AND BARRIER DETAILS
SW504	STREET IMPROVEMENT PROJECT
SW505	SUBDIVISION DEVELOPMENT PROCESS
WL101	STANDARD WATER ASSEMBLY DETAIL

APPROVED AS NOTED  
BY WICHITA PUBLIC WORKS  
ENGINEERING DIVISION  
& BY WICHITA FIRE DEPARTMENT

Engineering: SHAWN MELLIES 6/20/25  
Utilities: GREG LALLEY 6/20/25  
Fire Dept.: JOSE OCADIZ 6/20/25

NOTE TO CONTRACTORS

**Public Property:**  
Inspection and testing for the waterline is to be provided by a Licensed Consulting Engineering Firm under contract with the Owner/Developer. Said inspection is to be in accordance with the City of Wichita standard construction engineering practices and certified by a Professional Engineer Licensed in the state of Kansas. No work shall be performed in dedicated easements or public right-of-way by the Contractor without such inspection nor shall any work be commenced without written authorization by City Engineering. All Construction and Materials shall comply with the City or Wichita Specifications and Standards and Special Provision (on file and available in the City Engineer's Office) or on the City's Website.

**Private Property:**  
Installation and testing for the fire protection line is to be performed by a City of Wichita licensed fire protection contractor in accordance with the fire codes as adopted by the City of Wichita. All material and construction practices for the fire protection line shall comply with the fire codes as adopted by the City of Wichita (available from the City of Wichita Fire Department). The Contractor shall not commence work without notification and approval of the Wichita Fire Department. Inspection of the fire protection line is to be provided by a licensed Engineering Firm under contract with the Owner/Developer and the Fire Department. The contractor shall not start work until the project inspector is assigned to the project and present on the site. Any work done without inspection will be required to be uncovered for inspection.

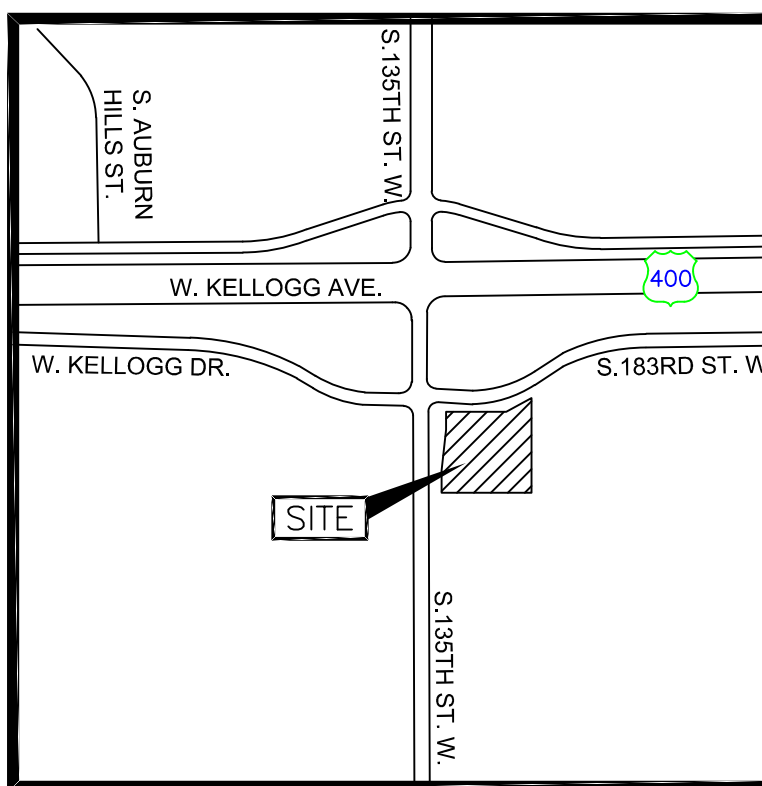
An approved copy of these plans signed by City staff are required on-site.

Baughman No.: 25-09-E243

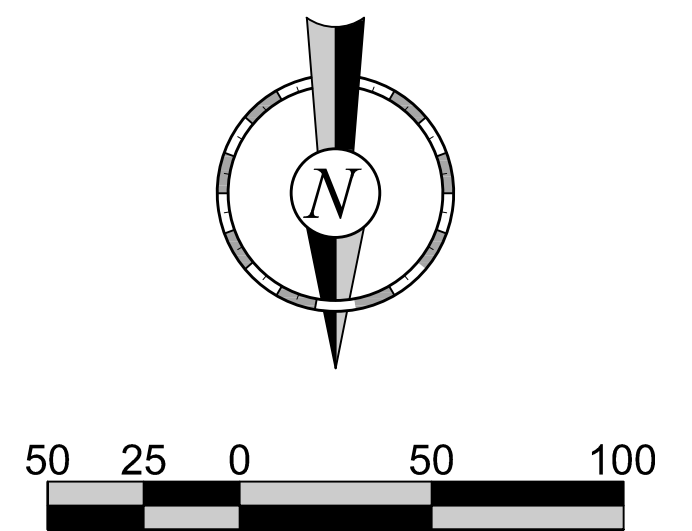
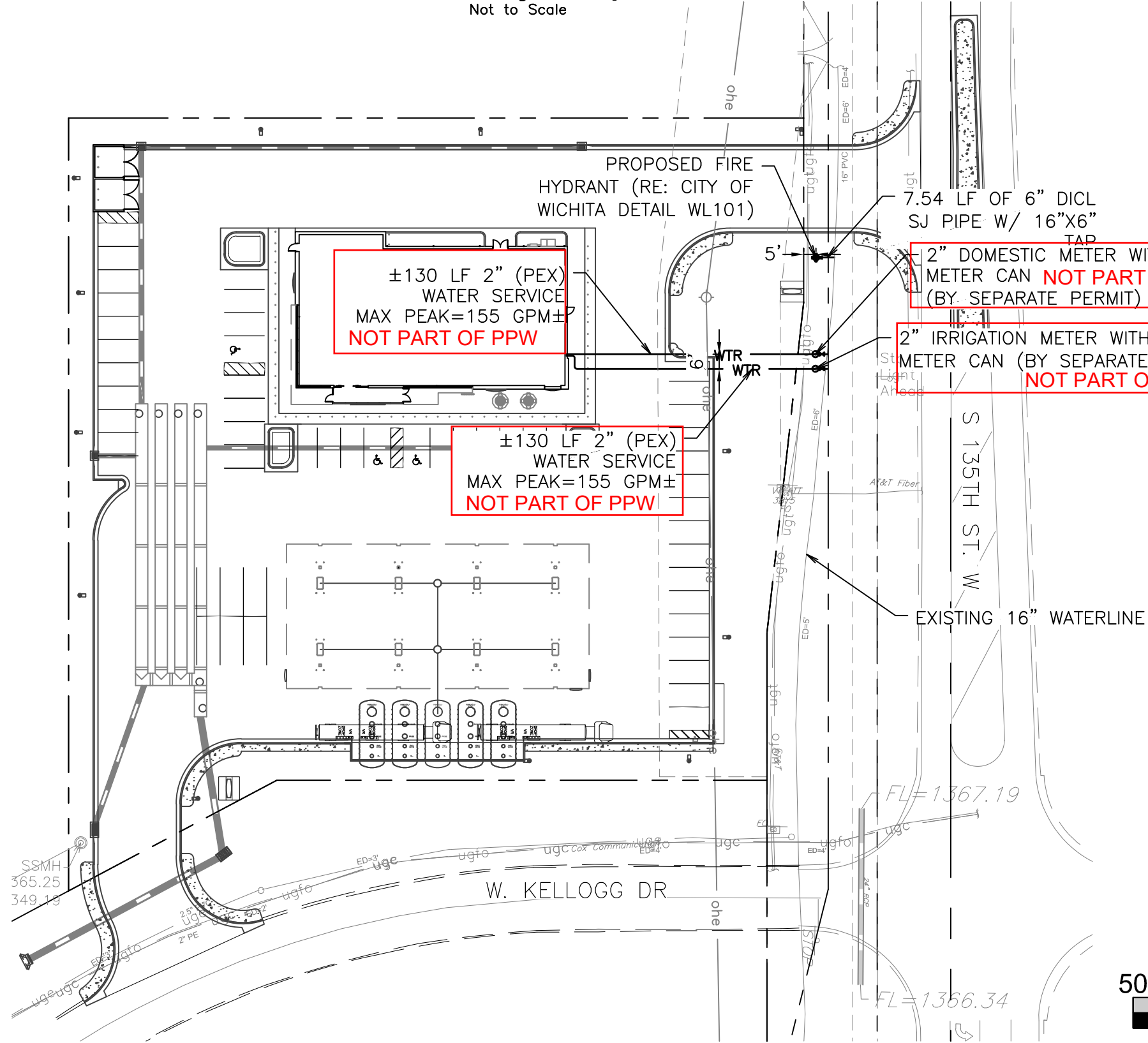
Paul Gunzelman, P.E. City Engineer  
Project Number  
2025-013115PPW (54030980)

#### Sanitary Separation Notes

- Maintain a minimum of 10-foot horizontal separation between all water lines (mains, services, and fire hydrants) and all sanitary sewer lines (mains, services, and manholes). All separation distances are to be measured from edge-to-edge at the closest point.
- Maintain a minimum of 2-foot vertical separation between all water lines (mains and services) and all gravity sanitary sewer lines (mains, services, and manholes) at crossings. All separation distances are to be measured from edge-to-edge, at the closest point.
- Maintain a minimum of 2-foot vertical separation between all water lines (mains and services) and all pressurized sanitary sewer lines (force mains and services) at crossings. Waterlines must always be placed above pressurized sanitary sewer lines where they cross. All separation distances are measured from edge-to-edge, at the closest point.



6" DICL Pipe = American  
Fire Hydrant = Mueller



### GENERAL NOTES:

- The Contractor shall comply with all applicable safety regulations. All construction shall be completed following current City Standard Specifications and Special Provisions.
- Contractor will be required to provide notice to utility companies a minimum of seventy-two (72) hours prior to any excavation, as follows:  
*Kansas One-Call 687-2470*  
The Contractor must notify the following in case of an emergency:  

AT&T	1-800-246-8464
Black Hills Energy	1-800-694-8989
City of Wichita Water & Sewer	1-316-219-8921
City of Wichita Stormwater	1-316-268-4090
City of Wichita Traffic	1-316-268-4034
Cox Communications	1-888-249-3530
Kansas Gas Service	1-888-482-4950
Every	1-800-544-4857
- Utility service lines, poles, etc. are to be adjusted as necessary by others prior to construction unless the plans specifically call for their adjustment by the Contractor or unless the plans specifically identify a utility to be adjusted by its owner during construction. Existing utilities and their location, as shown on the plans, represent the best information obtainable for design. The Contractor will be required to work around existing utilities within the right-of-way which do not conflict with proposed construction.
- Rubble from the removal of miscellaneous structures and excess excavation which is to be wasted shall be disposed of on sites to be provided by the Contractor. These sites shall be approved by the Engineer as to suitability, appearance and site location. Locations, in the opinion of the Engineer, that will leave an unsightly appearance will not be approved. All disposal sites must be approved by the Kansas Department of Health and Environment. Material either stockpiled or disposed of in a flood plain will require a Kansas State Board of Agriculture permit. Any material dumped in waters of the United States or wetlands is subject to U.S. Corps. of Engineers permitting regulations. Any material buried or stockpiled beyond approved construction limits will require additional archaeological investigations unless buried in a previously approved borrow location.
- Trees and shrubs in public right-of-way which are in direct conflict with proposed new construction shall be removed by the Contractor with the City Engineer's approval. Trees and shrubs which are not in direct conflict with proposed new construction shall be saved and protected from damage.
- The Contractor shall give all property owners and/or tenants of developed property abutting the construction of this project a minimum of ten (10) days notice prior to start of construction.
- The Contractor shall be responsible for preserving property irons. The Contractor will be required to re-establish any property irons which are damaged or destroyed by his construction operations. Such irons shall be re-established by a licensed land surveyor in accordance with state laws.
- The Engineering Division shall field locate water valves one time during construction when requested by the Contractor. It shall be the Contractor's responsibility to preserve such field locations during the construction process. Water valves, valve boxes or fire hydrants damaged during construction shall be repaired by Contractor at his own expense. Valve boxes and water meters within the project limits shall be adjusted to match final grades by the contractor.
- The Contractor shall notify the inspecting engineer and Dawnita Reinhardt at 316-268-4574 with the City of Wichita with the anticipated construction start date and notify them of project completion. Staking and inspection for this project will be the responsibility of the Contractor.
- If traffic will be impacted by construction, a traffic control plan must be submitted and approved by the City Traffic Engineer, Mike Armour at traffic@wichita.gov before construction can begin. The Contractor shall be responsible for all traffic control measures to facilitate construction. All construction zone markings and signage shall conform to the latest version of the Manual on Uniform Traffic Control Devices (MUTCD) as published by the US Dept. of Transportation, Federal Highway Administration. All costs associated with construction markings and signage shall be the Contractors responsibility.
- All elevations shown are NAVD 88.
- All areas disturbed during construction that will not be under proposed pavement shall be restored to match existing conditions.

Construction Began: 13OCT25  
Construction Ended: 05NOV25

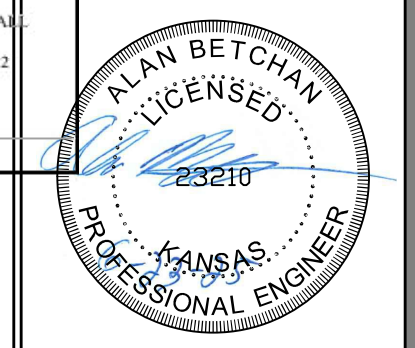
- Any sidewalk, drive approach, curb, or street pavement removed to construct project must have a pavement cut permit and be replaced by the City contractor. Permits can be obtained by calling 316-268-4501 or 316-268-4480.
- All applicable fees (tap, equity, in lieu of & main benefit) must be paid before any connections can be made on this project. Quotes can be obtained on fees by calling 316-268-4555.
- City maintenance of water mains ends at right-of-way or easement line or within two feet of vault.
- Opening and closing of water valves shall be done slowly to prevent damage to the water distribution system from water hammer. All valves closed by the contractor must be reopened as new construction permits. The project inspector must ascertain that any valve closed by the Contractor is reopened. The contractor will be permitted to operate water valves only when the project inspector assigned to the project is present.
- The Contractor shall lay a Tracer Wire and Set Test Stations along all water pipe installed in accordance with City Specifications and Tracer Wire Detail on detail sheet WL-101, cost is subsidiary to pipe installation.
- The contractor shall provide materials for temporary blowoff of waterlines. Connections to the existing waterline(s) shall be made with clean, swabbed pipe and flushed upon completion of tie-ins.
- Requests for short term water interruptions shall be made to the City Water Distribution Division and will be subject to their approval. The Contractor shall give written notice to any property owner, business, and/or tenants that will have water service interrupted at least 5 days in advance. Such notifications should indicate the time and date that the water will be turned off and when the service will be restored. No business, property owner, and/or tenants shall be without water service for more than 8 hours. Proposed tie in locations which will affect water service to property owners shall be performed during non-peak hours.
- The Contractor must schedule the connections to the existing main with the City such that there is a minimum disruption of service. Connections shall be made during periods of low water usage. The Contractor shall submit his proposed schedule for completing work for City approval at least 10 days prior to beginning construction.
- Deflections at pipe joint or couplings shall not exceed the pipe manufactures recommended maximum. Where deflections are greater than the maximum allowed, the contractor shall utilize fittings.
- Any existing joint exposed during excavation shall be replaced if within four feet of proposed joint.
- Valves 12 inch and larger are to be operated by the City Water Distribution Division, 48 hours of advance notice is required with the water Dispatch at 316-291-8921.
- All wet taps shall be installed by the City of Wichita. The Contractor will reimburse the City for tapping fees prior to tap being made. Unless noted on plans.
- The Contractor shall protect from damage and support existing utilities through construction as approved by the utility owner and the Engineer at the contractors expense.
- Contractor shall limit the extent of trench openings overnight and weekends to less than 50 feet.
- Wichita Fire Department inspections may be scheduled by calling 316-268-4574.

### Benchmarks

BM#1: XCUT TOP OF SOUTH CURB APPROXIMATELY 20' EAST OF WEST RETURN SE CORNER OF 135TH AND KELLOGG DRIVE. ELEVATION=1370.312

BM#2: SE CORNER OF SQUARE CUT ON TOP OF NORTH CURB-8' SOUTH OF MKEC CP BAR AND ALUMINUM CAP AND 260± EAST OF THE EAST RETURN OF THE NW CORNER OF 135TH AND KELLOGG DRIVE. ELEVATION=1365.504'

CORRECTIONS OR COMMENTS MADE ON THESE DRAWINGS AND THIS DOCUMENT DURING THIS REVIEW DO NOT RELIEVE THE CONTRACTOR FROM COMPLIANCE WITH ALL REQUIREMENTS OF THE CODE OF THE CITY OF WICHITA. THE CONTRACTOR IS RESPONSIBLE FOR VERIFYING THE ACCURACY OF ALL INFORMATION AND FOR OBTAINING ALL NECESSARY PERMITS AND APPROVALS IN ACCORDANCE WITH THE CITY OF WICHITA'S PROVISIONS OF SECTION 107.4 OF THE 2012 KANSAS CONSTRUCTION CODE.



PROJECT NO.: 0325  
AAB Engineering, LLC  
**AAB**  
Engineering • Surveying  
P.O. Box 2136  
Sand Springs, OK 74063  
KS CA#2282 Exp. Dec. 31, 2026  
Office: (918) 514-4283  
Fax: (918) 514-4288

**QuikTrip No. 0325**  
1668 S 135TH ST W  
Wichita, KS



© COPYRIGHT QUIKTRIP CORPORATION 2011  
ANY UNAUTHORIZED USE, REPRODUCTION,  
PUBLICATION, DISTRIBUTION, OR SALE IN  
WHOLE OR IN PART, IS STRICTLY FORBIDDEN.

PROTOTYPE: P-121 (03/05/25)  
DIVISION:  
VERSION: 001  
DESIGNED BY:  
DRAWN BY:  
REVIEWED BY:

REV	DATE	DESCRIPTION	ORIGINAL ISSUE DATE:

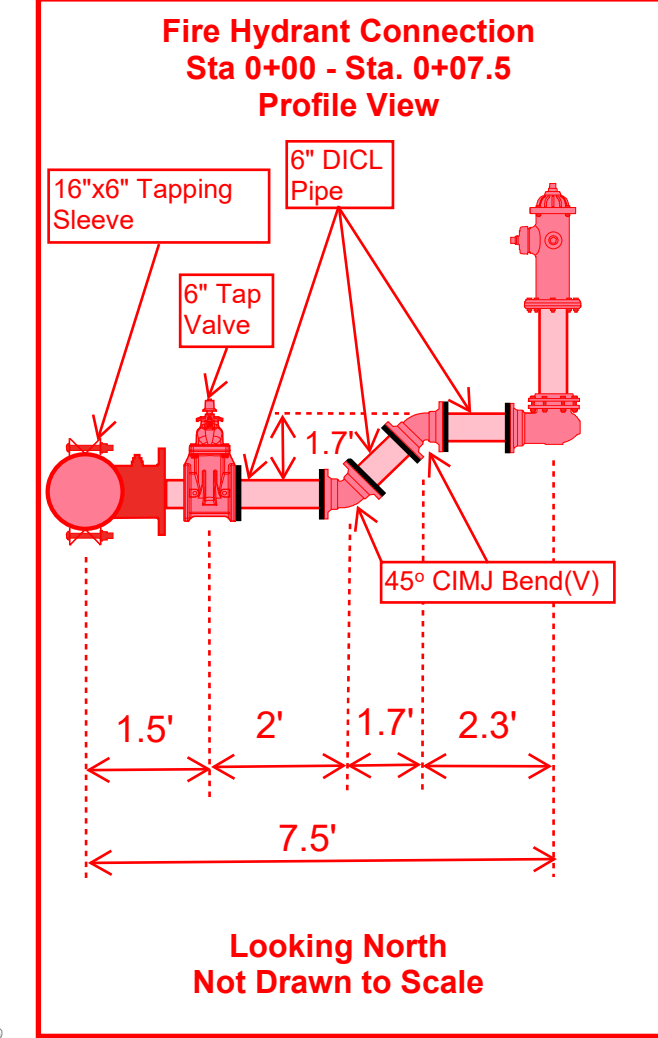
SHEET TITLE:  
WATERLINE PLAN

SHEET NUMBER:  
WL2

**UTILITY LEGEND (NEW)**

WTR	WATER LINE	07/06/25	by: Kyle McLarey
SS	SANITARY SEWER LINE		
UGET	UNDERGROUND ELECTRIC LINE		
UGT	UNDERGROUND TELEPHONE LINE		
ST	STORM PIPE (≤ 10")		
ST	STORM PIPE (≥ 12")		
XXXX	MAJOR CONTOUR		
XXXX	MINOR CONTOUR		
—	CONCRETE CURB AND GUTTER		
—	LIGHT POLE - 6" MIN. CLEAR FROM F/C (TRAVEL CLEAR PARKING - 15' MIN. CLEAR)		

- UTILITY GENERAL NOTES**
- UTILITY INSTALLATION CONSIDERATIONS**
- PRIOR TO THE CONSTRUCTION OF, OR CONNECTION TO ANY STORM DRAIN, SANITARY SEWER, OR ANY OTHER ELEVATION SENSITIVE UTILITY, THE CONTRACTOR SHALL EXCAVATE, VERIFY AND CALCULATE ALL POINTS OF CONNECTIONS AND ALL UTILITY CROSSINGS. THE CONTRACTOR SHALL INFORM THE ENGINEER AND THE OWNER OF ANY CONFLICT OR REQUIRED DEVIATIONS FROM THE PLAN. THE ENGINEER AND OWNER WILL BE HELD HARMLESS IN THE EVENT THE ENGINEER AND OWNER ARE NOT NOTIFIED OF A DESIGN CONFLICT.
  - AS POSSIBLE, ALL PROPOSED UTILITIES SHALL BE ROUTED THROUGH PERVIOUS AREAS - SPECIFICALLY AVOIDING ON-SITE PAVED AREAS DESIGNATED FOR PARKING, ACCESS, AND VEHICULAR TRAFFIC FLOW.
  - CONTRACTOR TO VERIFY LOCATION AND DEPTH OF WATER MAIN PRIOR TO CONSTRUCTION.
  - THE CITY OF WICHITA WILL TAP THE 16" MAIN AFTER FEES ARE PAID.
  - THE CITY OF WICHITA WILL SET PORTION OF THE WATERLINE BETWEEN THE METER AND THE PUBLIC WATER MAIN. 2" AND SMALLER DOMESTIC OR IRRIGATION SERVICES WILL NOT BE PART OF THE PPW PLANS.
  - CONTRACTOR TO EXCAVATE, BLOCK, AND SET VALVE BOX TO GRADE.



**Legend**  
CIMJ = Cast Iron Mechanical Joint  
DI CL = Ductile Iron Concrete Lined  
(V) = Vertical  
— = Megalug  
CL = Centerline

- BENCHMARKS**
- X-CUT TOP OF SOUTH CURB APPROXIMATELY 20' EAST OF WEST RETURN SE CORNER OF 135TH AND KELLOGG DRIVE. ELEVATION=1370.312'
  - SE CORNER OF SQUARE CUT ON TOP OF NORTH CURB-8' SOUTH OF MKEC CP BAR AND ALUMINUM CAP AND 280± EAST OF THE EAST RETURN OF THE NW CORNER OF 135TH AND KELLOGG DRIVE. ELEVATION=1365.504'

- CL W. Kellogg Drive and S. 135th Street W.**
- Sta 0+07.5 - Fire Hydrant: 264' S. & 63' E.
  - Sta 0+01.5 - 6" Tap Valve: 264' S. & 57' E.
  - Sta 0+00 - 16" x 6" Tapping Sleeve: 264' S. & 56' E.
- 6" Fire Hydrant Valve = 6" TAP Valve is 6' West of Fire Hydrant. Storz Pumper Nozzle Facing West.**

**Fire Hydrant (L=7.5):**  
BL Elev: 1375.27  
N: 1,676,712.52 E: 1,602,434.54  
VB Elev: 1375.43  
N: 1,676,713.22 E: 1,602,428.01

**NOT PART OF PPW.**  
±130 LF 2" (PEX) WATER SERVICE  
MAX. PEAK=155 GPM±

**NOT PART OF PPW.**  
2" DOMESTIC METER WITH METER CAN (BY SEPARATE PERMIT)

**NOT PART OF PPW.**  
±130 LF 2" AQUAPEX IRRIGATION LINE

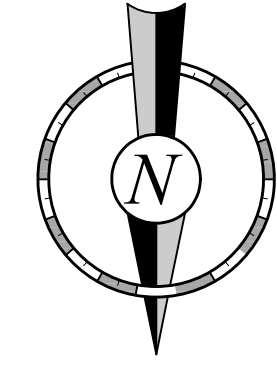
**NOT PART OF PPW.**  
2" IRRIGATION METER WITH METER CAN (BY SEPARATE PERMIT)

See As-Built Profile Sketch this Sheet.

**Northings (N) & Eastings (E): State Plane Coordinates - Kansas Grid South - NAD83 (2011), EPOCH 2023.**  
Elevations: NAVD88 (Geoid 18).  
As-Built Survey Shots By: Baughman Company, P.A.

**G1 WATERLINE PROFILE**

H 1"=20', V 1"=5'



FILE LOCATION: P:\Kansas Projects\2702\36 - QT 0325 Wichita\01-0325 PPW.dwg TAB NAME: Water Plan USER: Tech-11 SAVED: 6/17/2025 9:05 AM PLOTTED: 6/23/2025 8:24 AM

