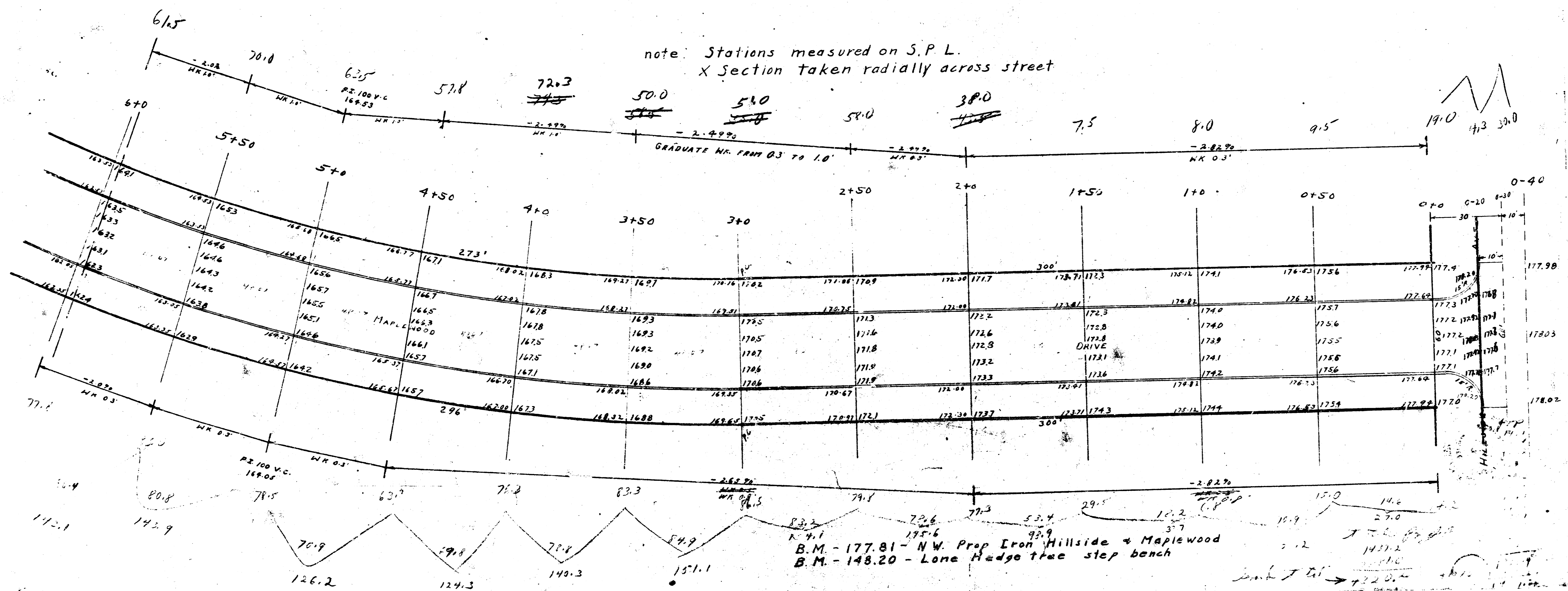


1942
MAPLEWOOD DRIVE - W. HILLSIDE TO S.L. SHADYBROOK
30' CONC WITH INT CB

NOTE: ADJUST GRADES TO FIT
ACTUAL GROUND MEASUREMENTS

note: Stations measured on S.P.L.
X Section taken radially across street



B.M. - 177.81 - NW Prop Iron Hillside & Maplewood
B.M. - 148.20 - Lone Hedge tree step bench

