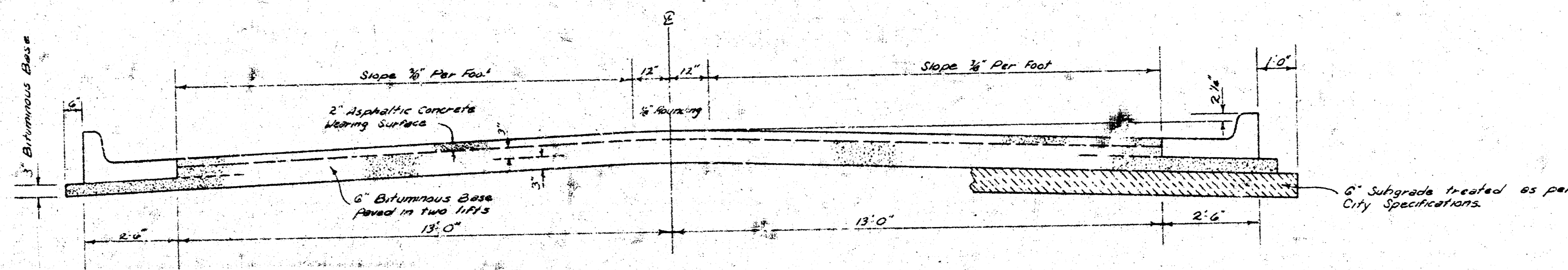


MELROSE LANE
 NL. NANTUCKET AVE TO WL. NORTHWEST PARKWAY
 PROJECT NO. DAKS573090



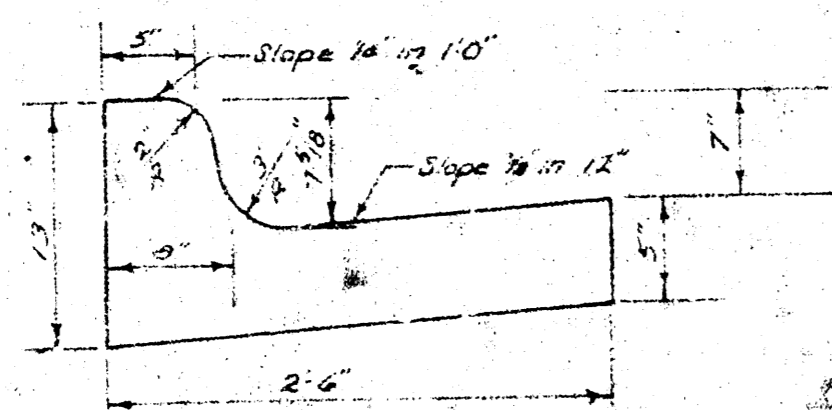
TYPICAL SECTION

3' ASPHALTIC CONCRETE PAVEMENT WITH BITUMINOUS BASE

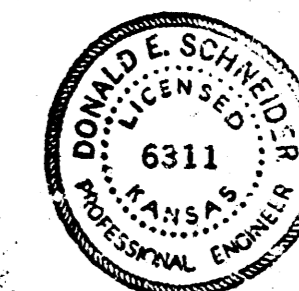
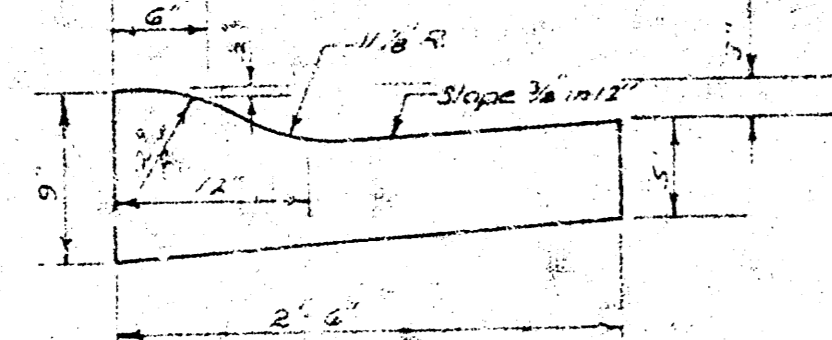
A TACK COAT OF EMULSIFIED ASPHALT (SS-1H) SHALL BE APPLIED AT AN APPROXIMATE RATE OF 0.05 GALLONS PER SQ. YD. BETWEEN LIFTS OF ASPHALTIC MATERIALS WHEN ORDERED BY THE ENGINEER. TACK COAT WILL NOT BE PAID FOR DIRECTLY AND SHALL BE CONSIDERED AS SUBSIDIARY TO PRICE BID FOR ASPHALTIC PAVEMENT. BITUMINOUS BASE AND ASPHALTIC CONCRETE WEARING SURFACE SHALL BE PLACED WITH A LAYDOWN MACHINE HAVING AUTOMATIC ELECTRONIC CONTROLS FOR CROWN AND GRADE. CONSTRUCTION JOINTS IN EACH LIFT SHALL BE STAGGERED A MINIMUM DISTANCE OF 1' WITH JOINTS IN PRECEDING LIFTS AND SUCH THAT A JOINT WILL BE CONSTRUCTED ON THE PAVEMENT CENTERLINE IN THE TOP LIFT.

The A.C. pavement between the Comb. Curb & Gutter shall be paid as 3" A.C. Pavement (6" Bituminous Base). The Bituminous Base under the Comb. Curb & Gutter shall be paid as 3" Bituminous Base.

COMBINED CURB & GUTTER



ROLL TYPE CURB & GUTTER



CITY OF WICHITA, KANSAS

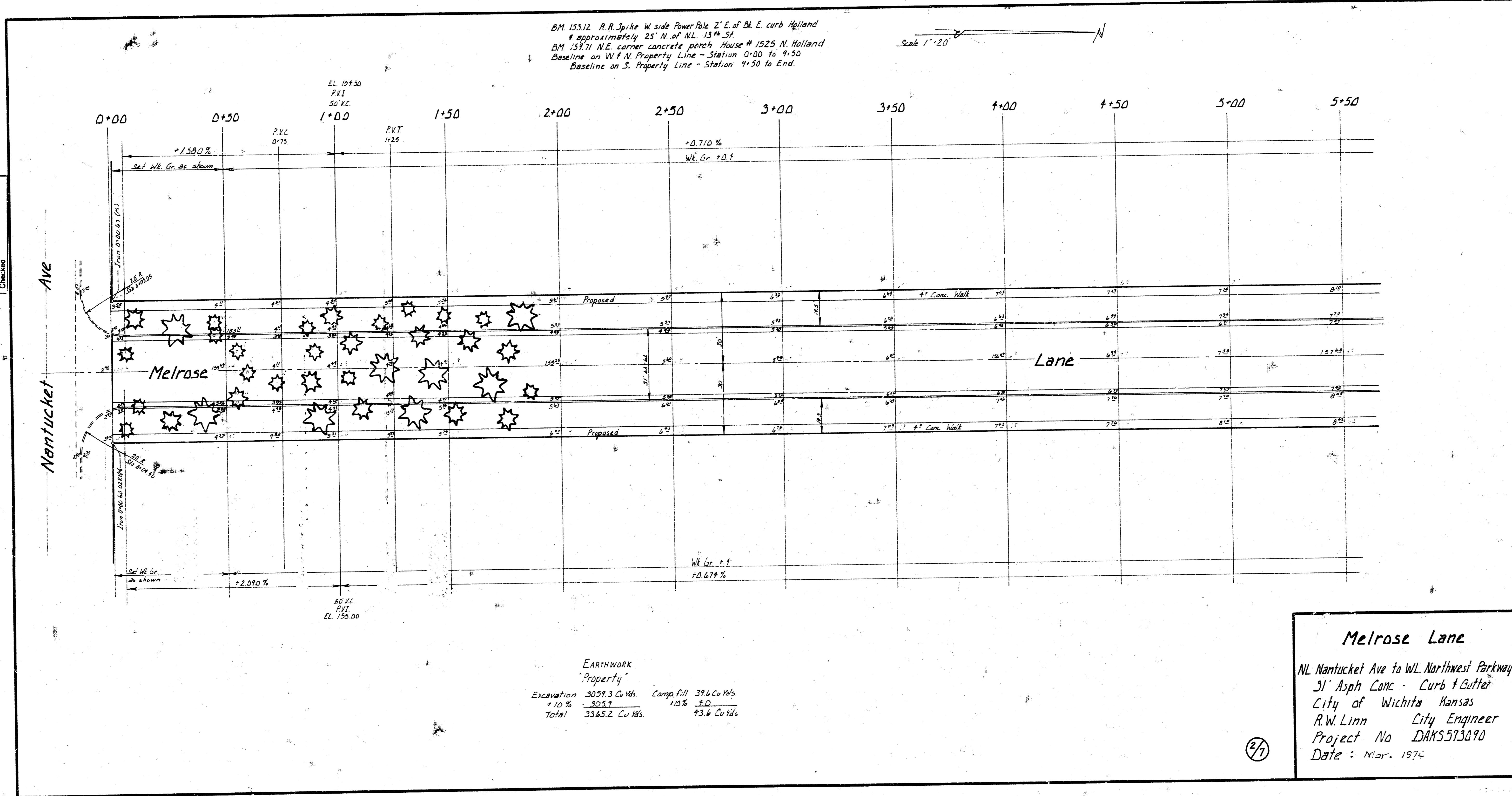
DEPARTMENT OF PUBLIC WORKS — ENGINEERING

R. W. LINN CITY ENGINEER

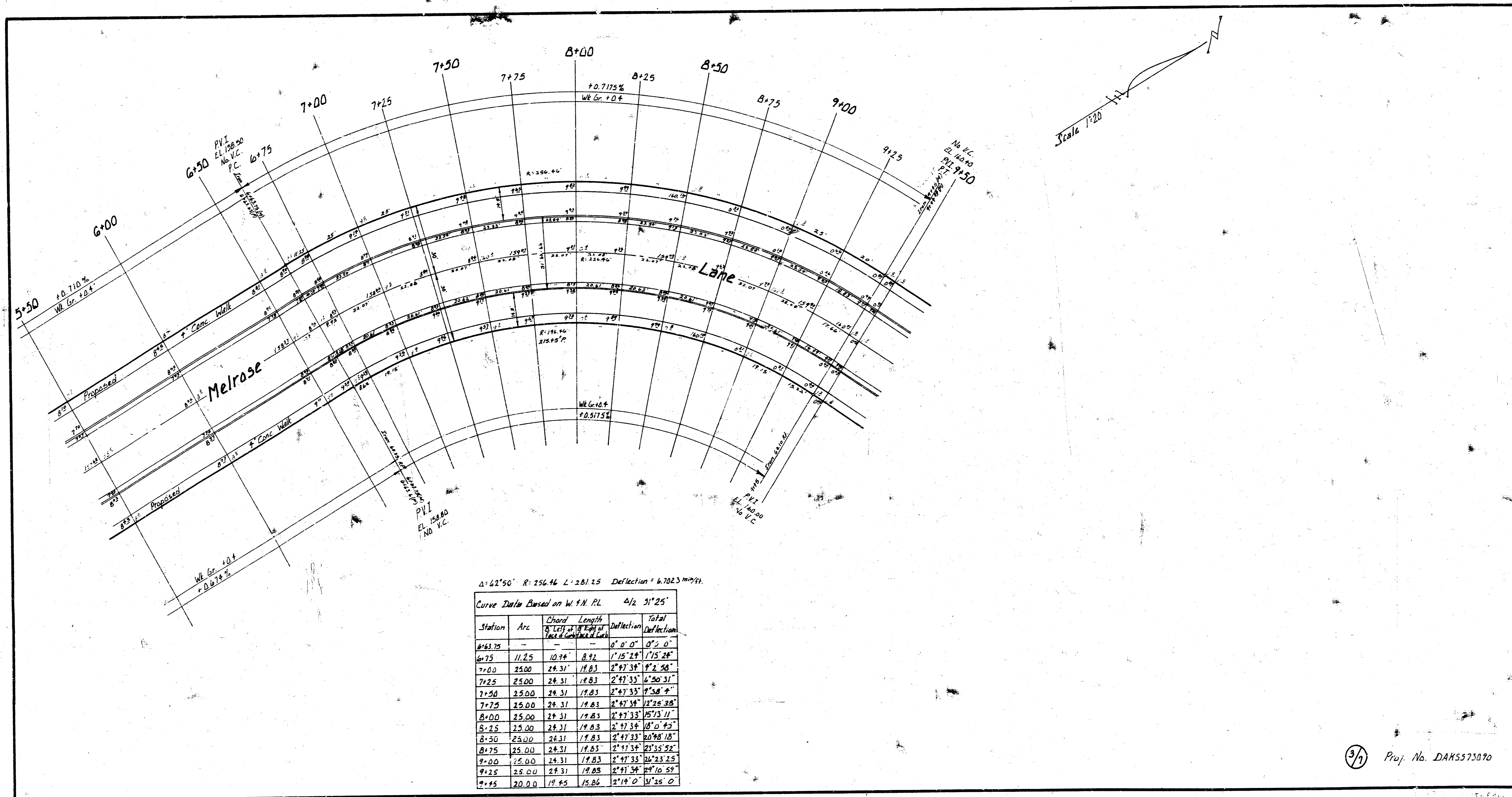
DATE: Mar. 1974 PROJ. NO. 17

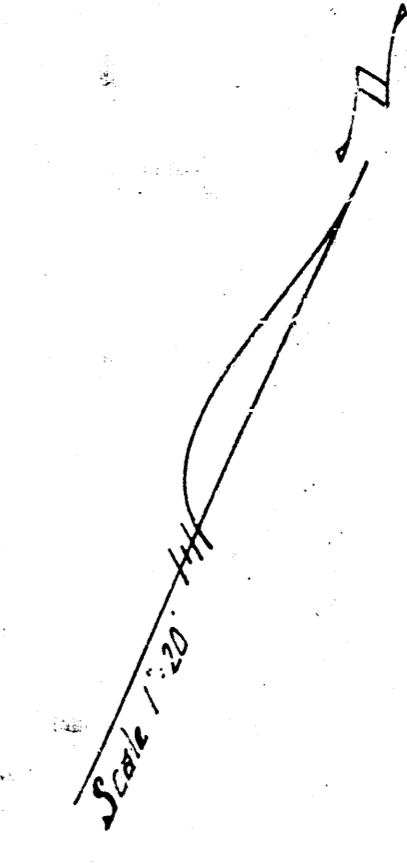
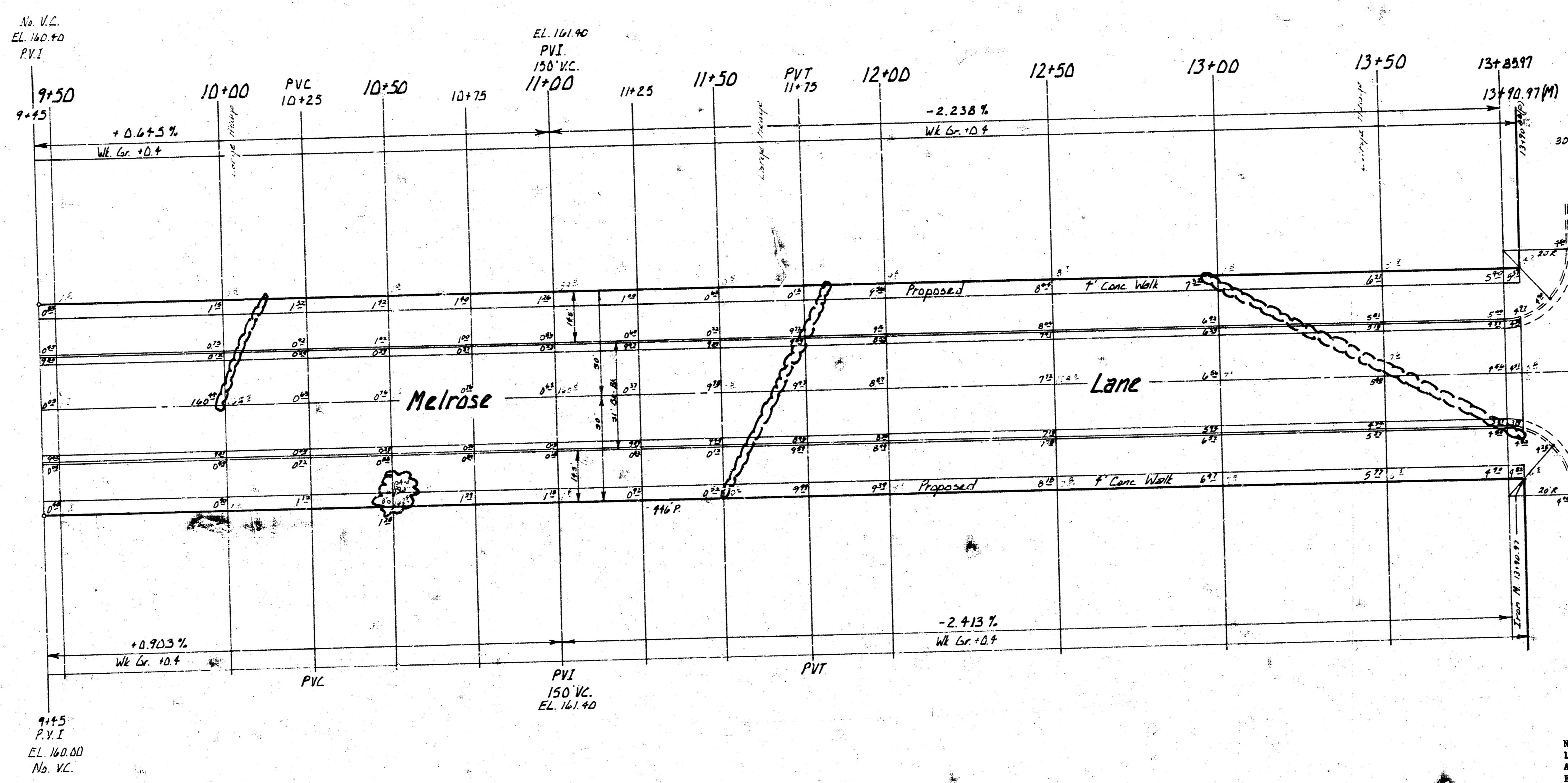
5-5099
1-6011

Surveyed by: B. W. 1/19/74
 Plan: Leominster
 Checked:



(27)





NOTE: CONTRACTOR TO GRADE INTERSECTION OF MELROSE LANE AND NORTHWEST PARKWAY TO MATCH NEW PAVEMENT AND SUCH THAT THE STORM WATER WILL DRAIN NORTH-EAST IN STREET RIGHT OF WAY. THIS WORK WILL NOT BE PAID FOR SEPARATELY AND SHALL BE CONSIDERED AS SUBORDINARY TO THE OTHER ITEMS OF WORK.