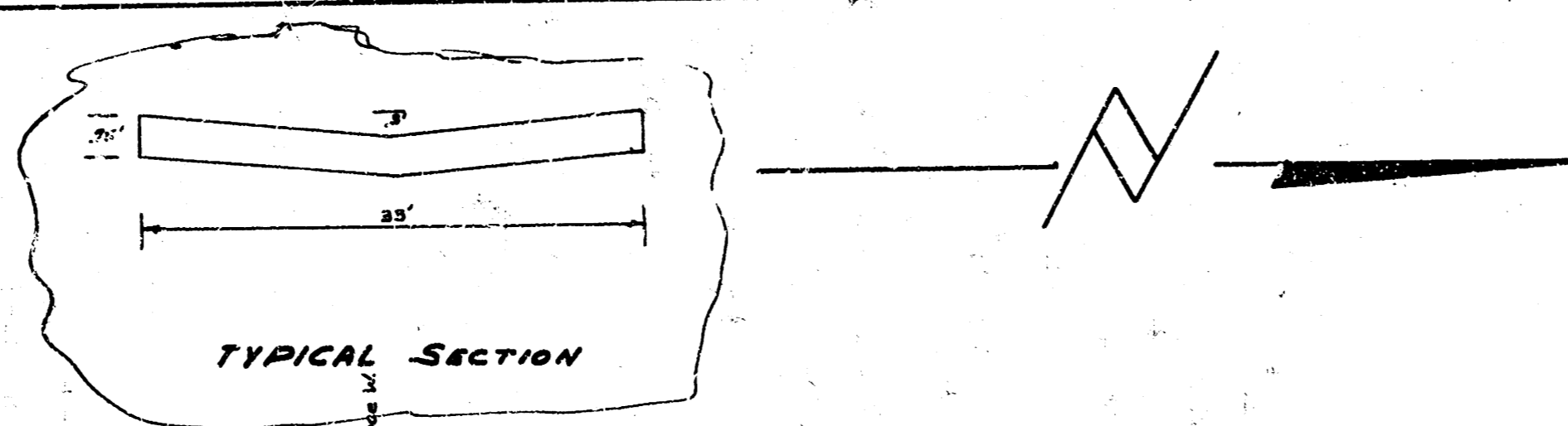


CHW-6

BM. 11452 SE corner coping, Pedestrian guard rail, NE corner underpass @ 2nd
BM. 11059 Iron in thimble @ 3rd, EL. Washington
BM. 11192 "+" on S. Ch. 3rd, 4' E. of EL. Moore.
BM. 11156 "R" in Ritchie c. w. w. S.W. Moore and 2nd



0+00 Bay door W
0+05 Bay door E
0+08 MH 5' E. Meter meter in MH.

0+50 Bay door W
0+55 Bay door E

0+75 Bay door W
0+80 Bay door E

0+85 Bay door W
0+90 Bay door E

0+95 Bay door W
1+00 Bay door E

1+05 Bay door W
1+10 Bay door E

1+15 Bay door W
1+20 Bay door E

1+25 Bay door W
1+30 Bay door E

1+35 Bay door W
1+40 Bay door E

1+45 Bay door W
1+50 Bay door E

1+55 Bay door W
1+60 Bay door E

1+65 Bay door W
1+70 Bay door E

1+75 Bay door W
1+80 Bay door E

1+85 Bay door W
1+90 Bay door E

1+95 Bay door W
2+00 Bay door E

2+05 Bay door W
2+10 Bay door E

2+15 Bay door W
2+20 Bay door E

2+25 Bay door W
2+30 Bay door E

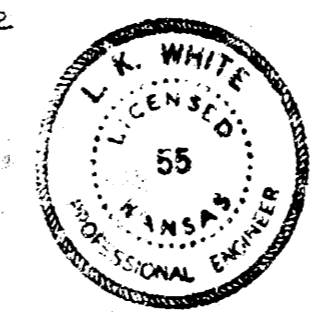
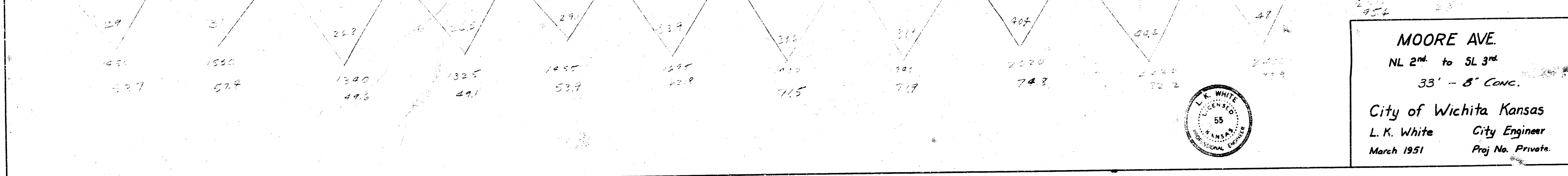
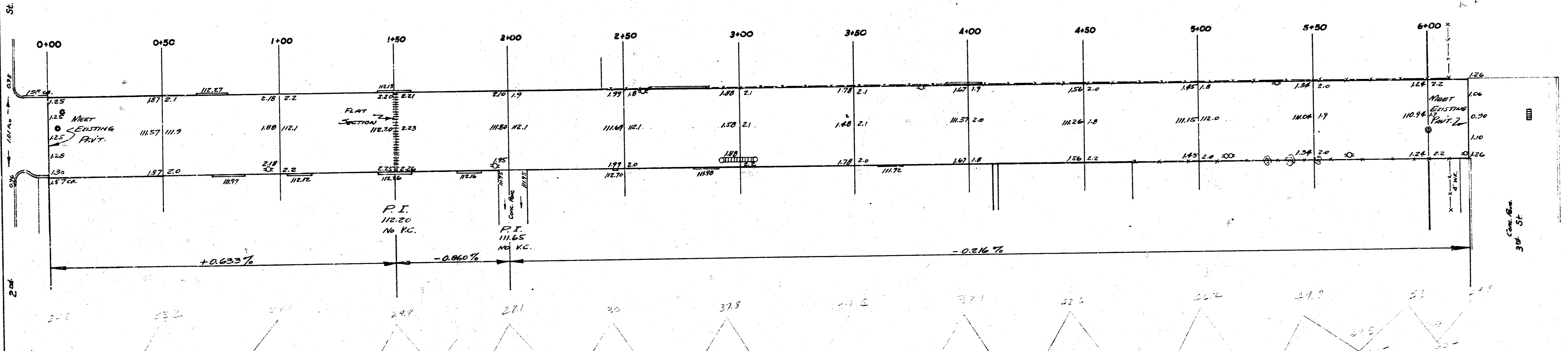
2+35 Bay door W
2+40 Bay door E

2+45 Bay door W
2+50 Bay door E

2+55 Bay door W
2+60 Bay door E

2+65 Bay door W
2+70 Bay door E

2+75 Bay door W
2+80 Bay door E



MOORE AVE.
NL 2nd to 5L 3rd
33' - 8' CONC.
City of Wichita Kansas
L. K. White City Engineer
March 1951 Proj. No. Private.