

D.M. 1142-6 in Blk. w. ch. Edgemore St. 2nd of
 S.W. 18281 Top rim of H.H. 2nd. W.L. Edgemore

Red Flag indicates grade
 change

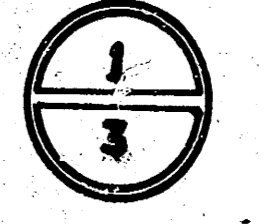
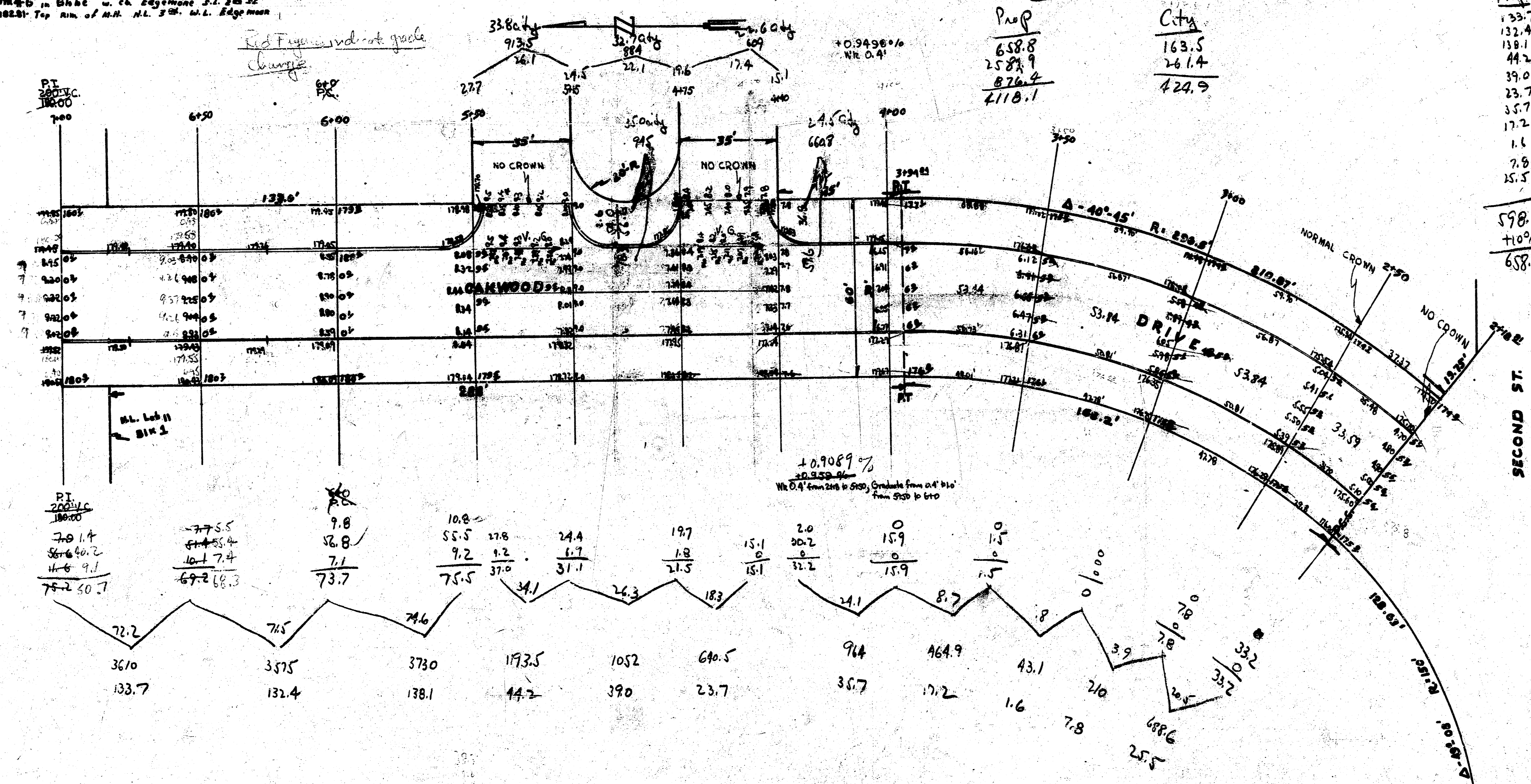
Grand Total Excess

Prop	City
658.8	163.5
2587.9	261.4
876.4	424.9
4118.1	

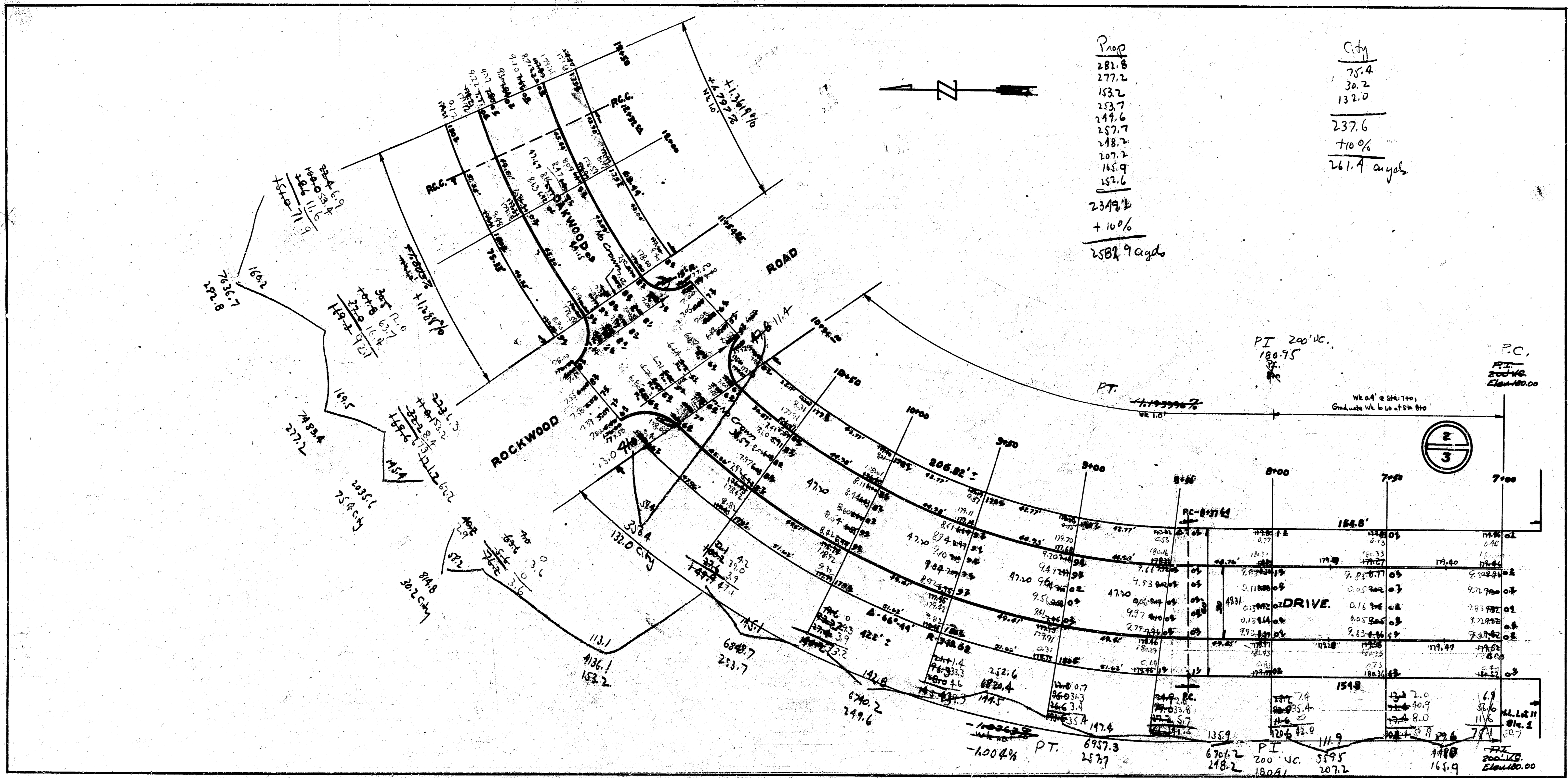
Prop	City
133.7	33.8
132.4	32.7
138.1	22.6
44.2	35.0
39.0	24.5
23.7	
35.7	48.6
17.2	+10%
1.1	
2.8	
15.5	

163.5
 261.4
 424.9

598.9
 +10%
 658.846



OAKWOOD DRIVE
 N.L. SECOND EL. BROOKSIDE
 30' CONC. f/cb
 CITY OF WICHITA, KANSAS
 L.K. WHITE CITY ENGINEER
 JULY 1947



Prop
 282.8
 277.2
 153.2
 243.7
 247.6
 257.7
 248.2
 207.2
 145.9
 152.6
 2349.8
 + 10%
 2584.9 cysd

City
 75.4
 30.2
 132.0
 237.6
 + 10%
 261.4 cysd



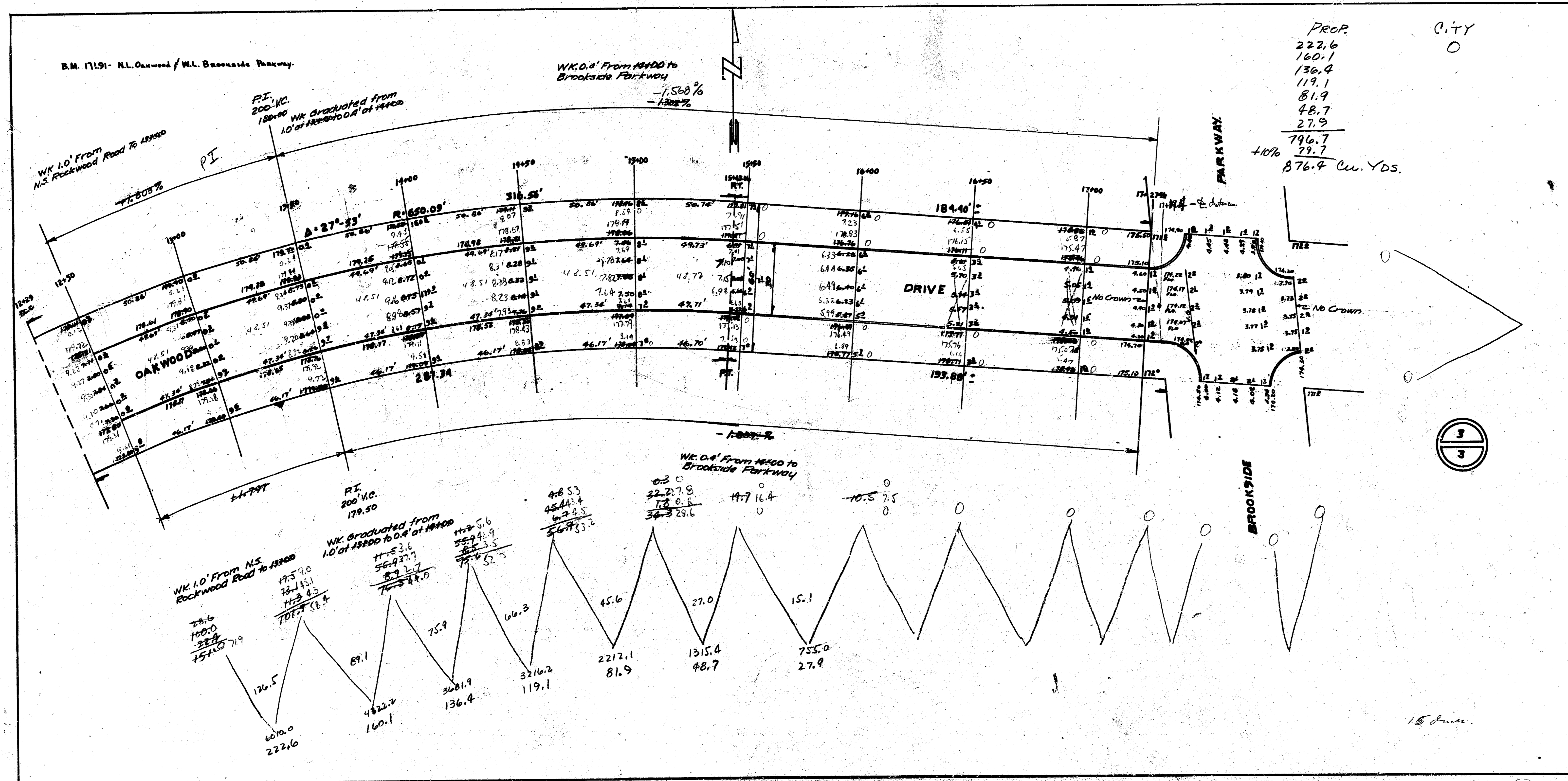
-100.4% PT. 697.3, 257.7
 670.2, 248.2
 PI, 200'VC, 180.75
 559.5, 207.2
 165.9
 PC, 200+40, Elev 180.00
 10

B.M. 11191- N.L. Oakwood / W.L. Brookside Parkway.

W.K. 0.4' From H&D to Brookside Parkway

PROP CITY
 222.6
 160.1
 136.4
 119.1
 81.9
 48.7
 27.9

 796.7
 +10% 79.7
 876.4 Cu. Yds.



4114 3