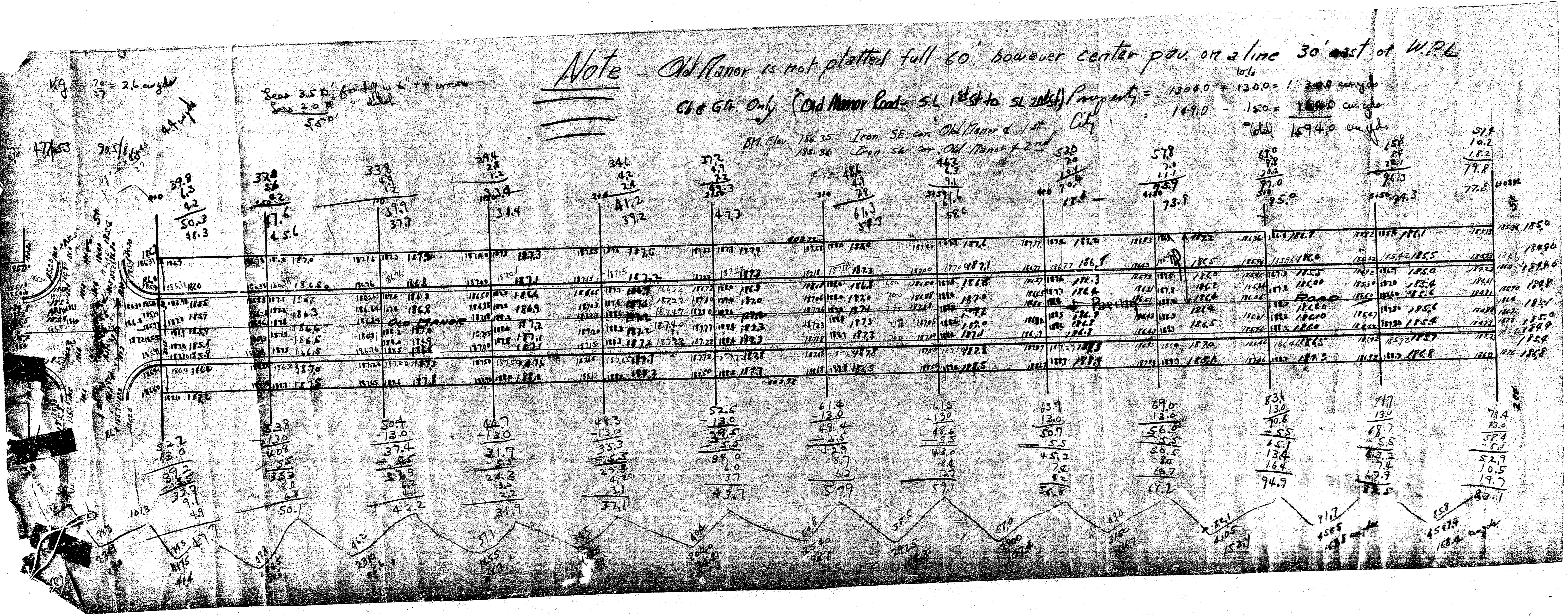


Note - Old Manor is not platted full 60' however center poi. on a line 30' east of W.P.L.

C&G's Only (Old Manor Road - S.L. 1844 to S.L. 2044) Property = 1300.0 - 150.0 = 1150.0 ac. approx.

BM Elev. 166.35 Iron SE cor. Old Manor & 1st City 169.10 - 150.0 = 119.10 ac. approx.

total 1694.0 ac. approx.



Note: Add 10' to All Elevations

26' Conc.
B.M. Top of Fire Hydrant
Elev. 187.41 ← O.K. and

