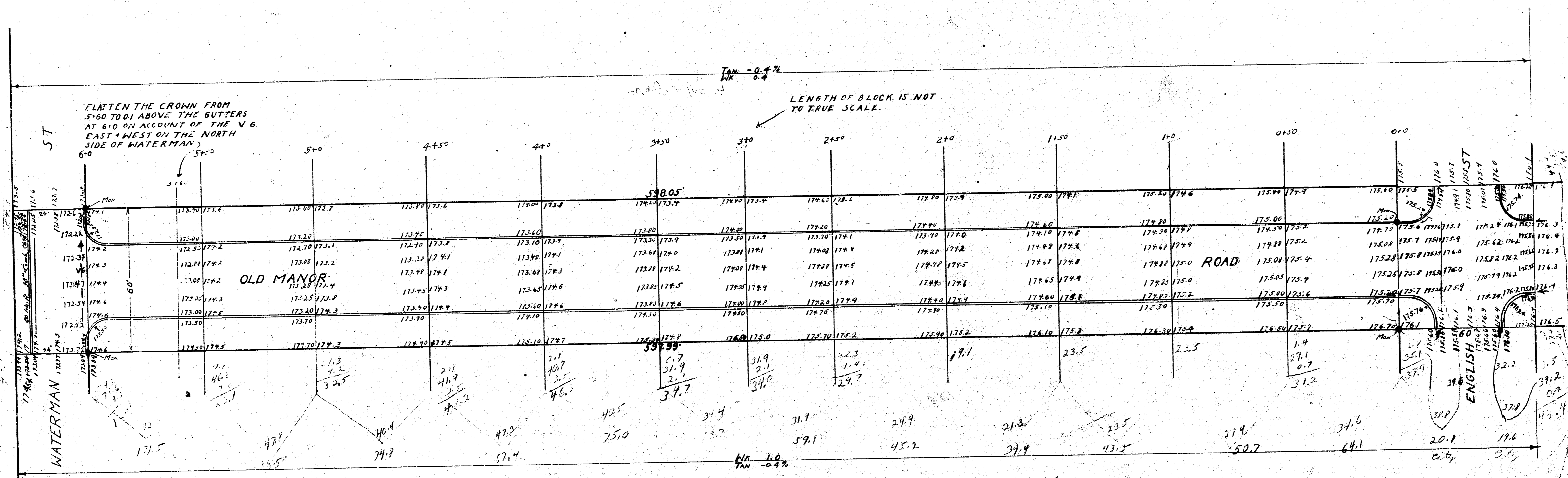


1941  
 OLD MANOR ROAD-SL. WATERMAN TO NL. ENGLISH  
 30' CONC. WITH INTEGRAL CURB



BM 17912 TP END OF CURB ON WEST SIDE OF  
 OLD MANOR AT DOUGLAS AVE.

Property	City
171.5	108.8
21.5	20.1
74.8	19.6
27.4	107.8
75.0	
63.7	
59.1	256.3
45.2	
39.7	
43.5	
50.7	
64.1	
862.9	

Property — 862.9 + 11.9 = 874.8  
 City — 256.3 + 25.4 = 281.7  
 = 1156.5

50 ft. added to city  
 extra cut at waterman intersection  
 for drainage

20 dms