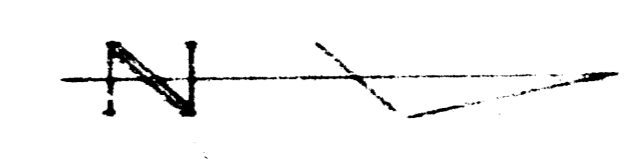
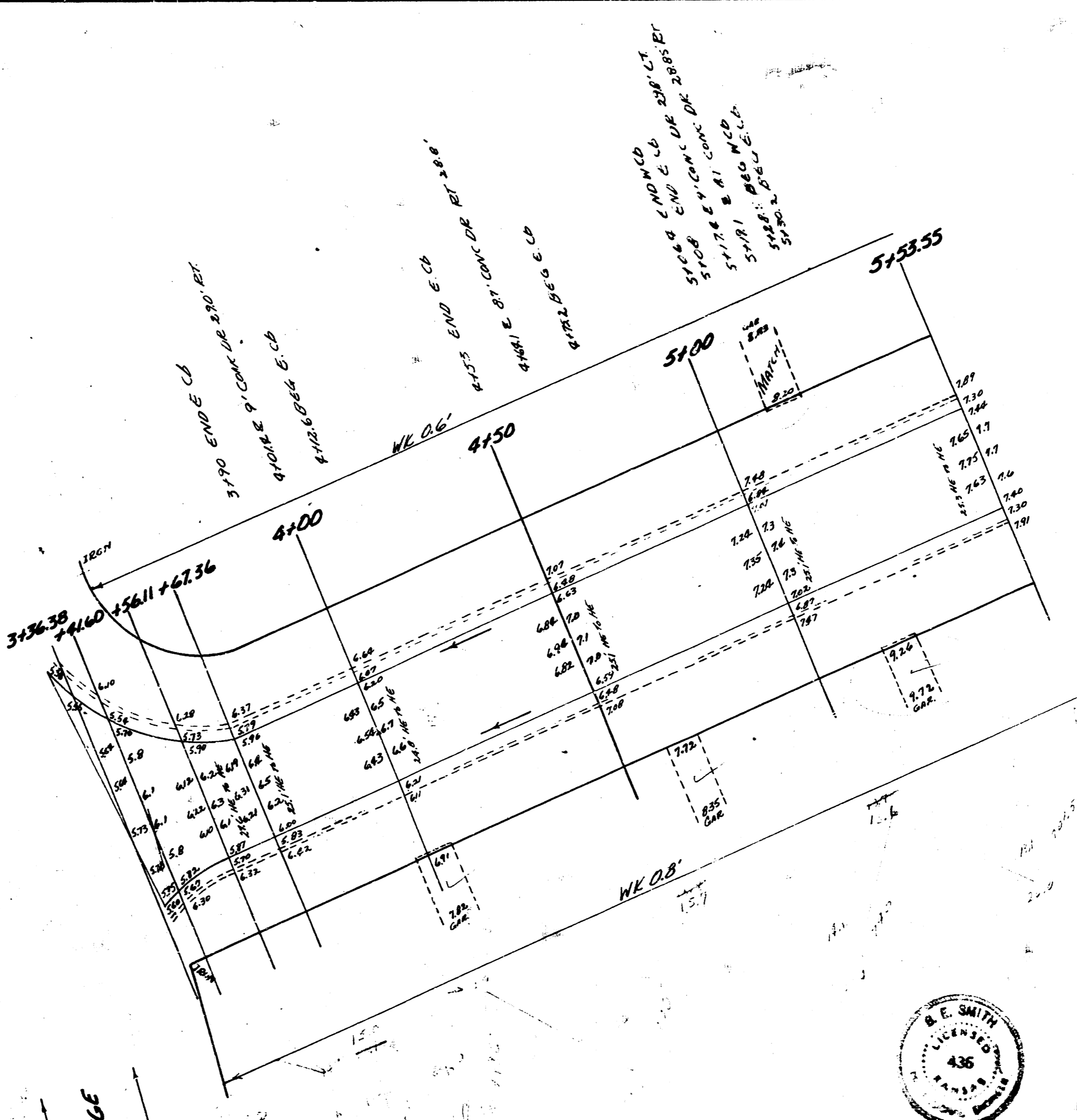
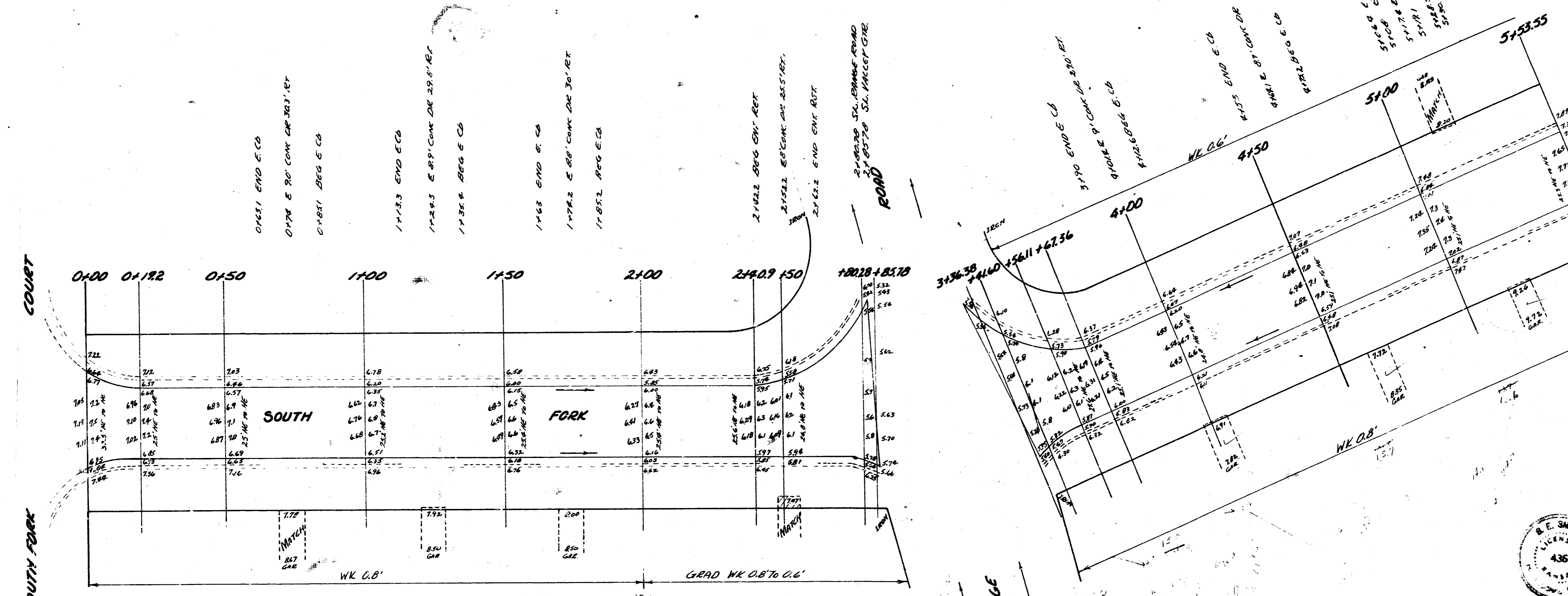


BM 99.07 N.W. Cor. Cont. PUGH 16" 3023 SOUTH FORK COURT
 BM 98.54 "N" IN MUELLER, F. PUGH N.W. Cor. SOUTH FORK DR. & RANGE ROAD
 BM 101.37 N.W. Cor. Cont. PUGH 16" 2802 TIMBERLONE SE. Cor. TIMBERLONE & SOUTH FORK

STA ON E



SOUTH FORK
 N.W. CORNER OF
 26' CONC
 CITY OF WICHITA KANSAS
 BERTHA
 JUN 1925