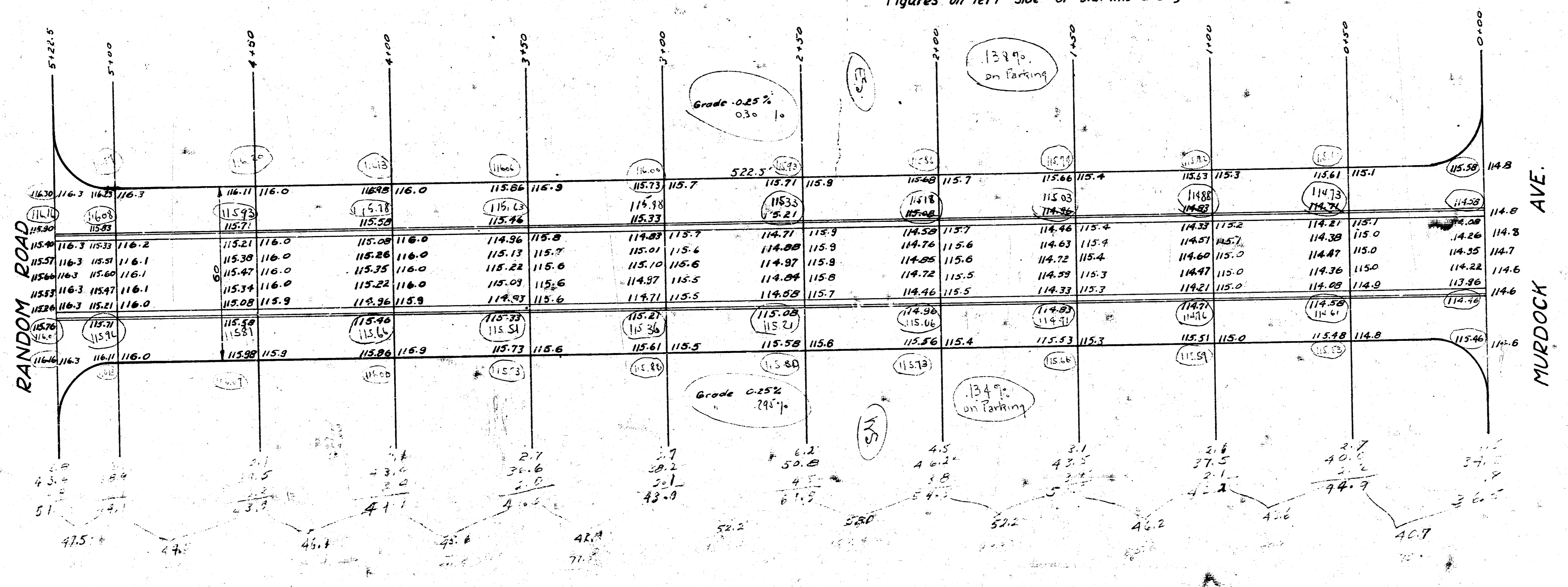


1941  
 SPRUCE ST. - SL. RANDOM ROAD - N.L. MURDOCK AVE.  
 26-2-30 - 2" A.C. - 5" CONC. BASE

Figures on right side of sta. line are ground elevs.  
 Figures on left side of sta. line are grade elevs.



B.M. - 117-05 118.23 Top of West end of 42" conc. pipe at  
 Grove & N.S. Frisco R/W.

Total cur. lds 912.4  
 98.2  
 1003.6