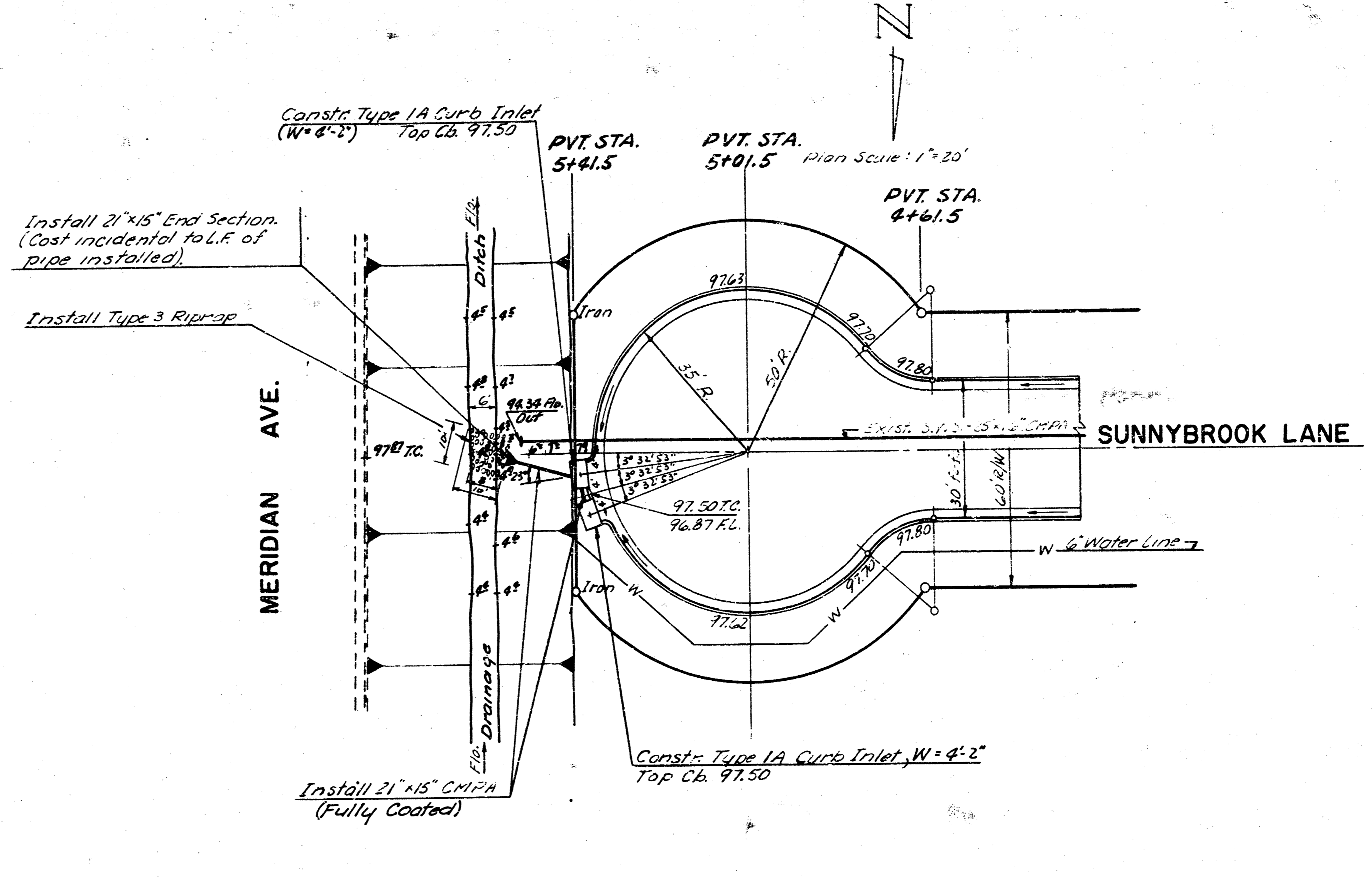
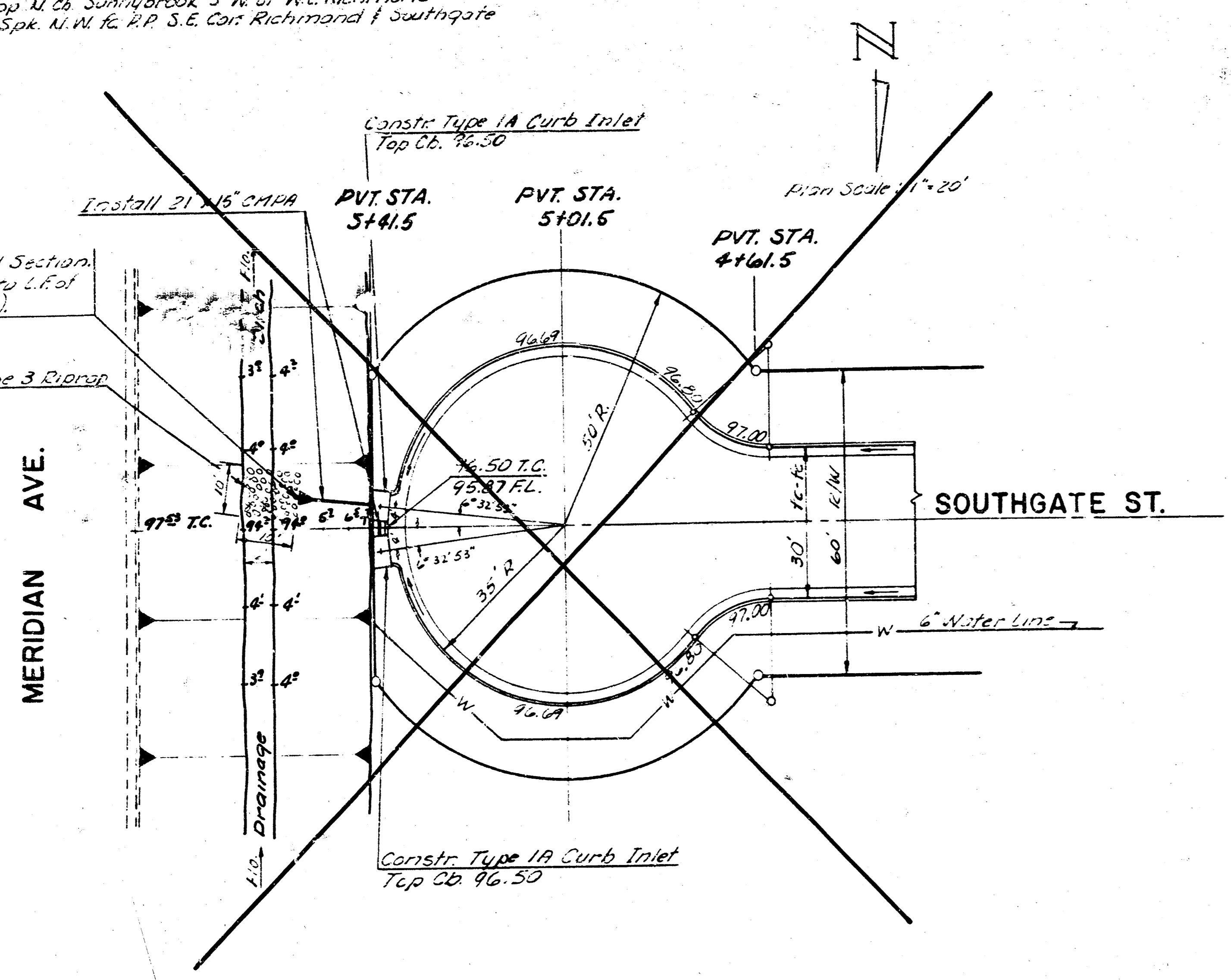


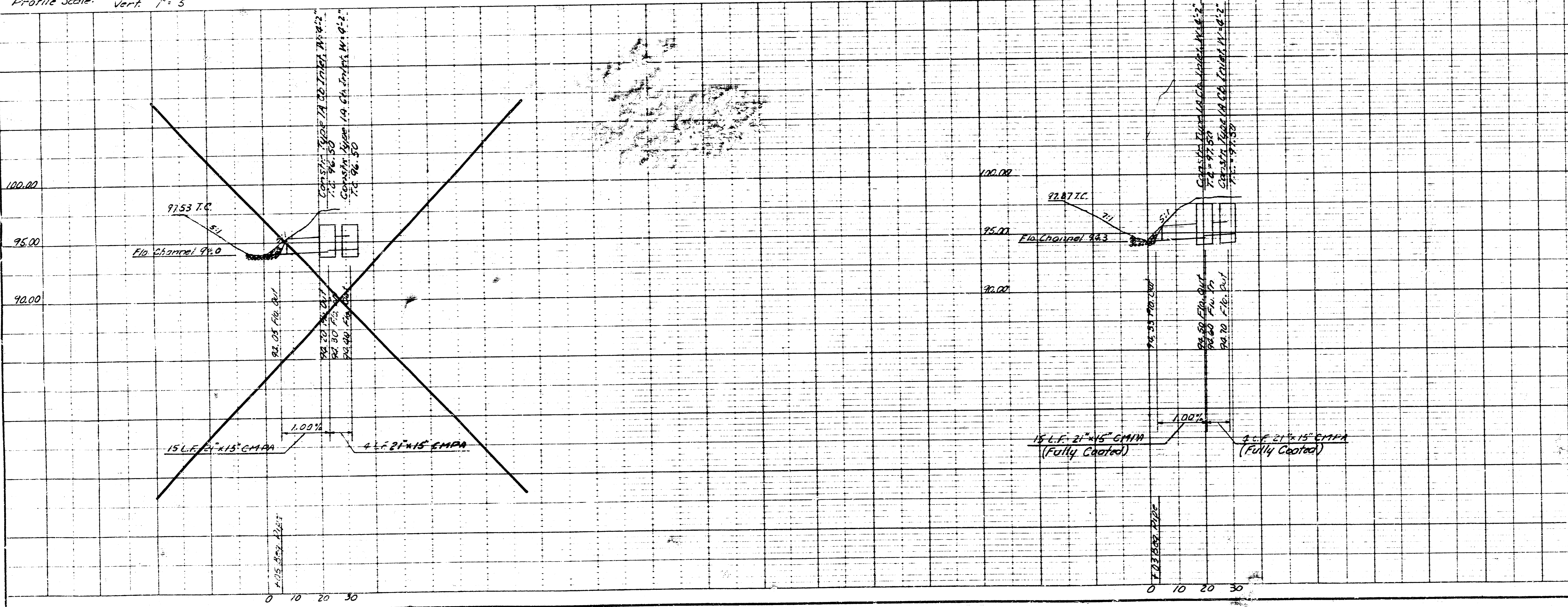
B.M. 98.55 Top of Sunnybrook 5' W. of W.L. Richmond
 B.M. 98.80 R.R. Spk. N.W. 1/4 R.P. S.E. Cor. Richmond 1 Southgate

PLAN
 SHEET NO. 2-29
 DATE 11/1/51
 DRAWN BY Z.L.C.
 CHECKED BY A.L.M.
 IN CHARGE BY R.W.L.



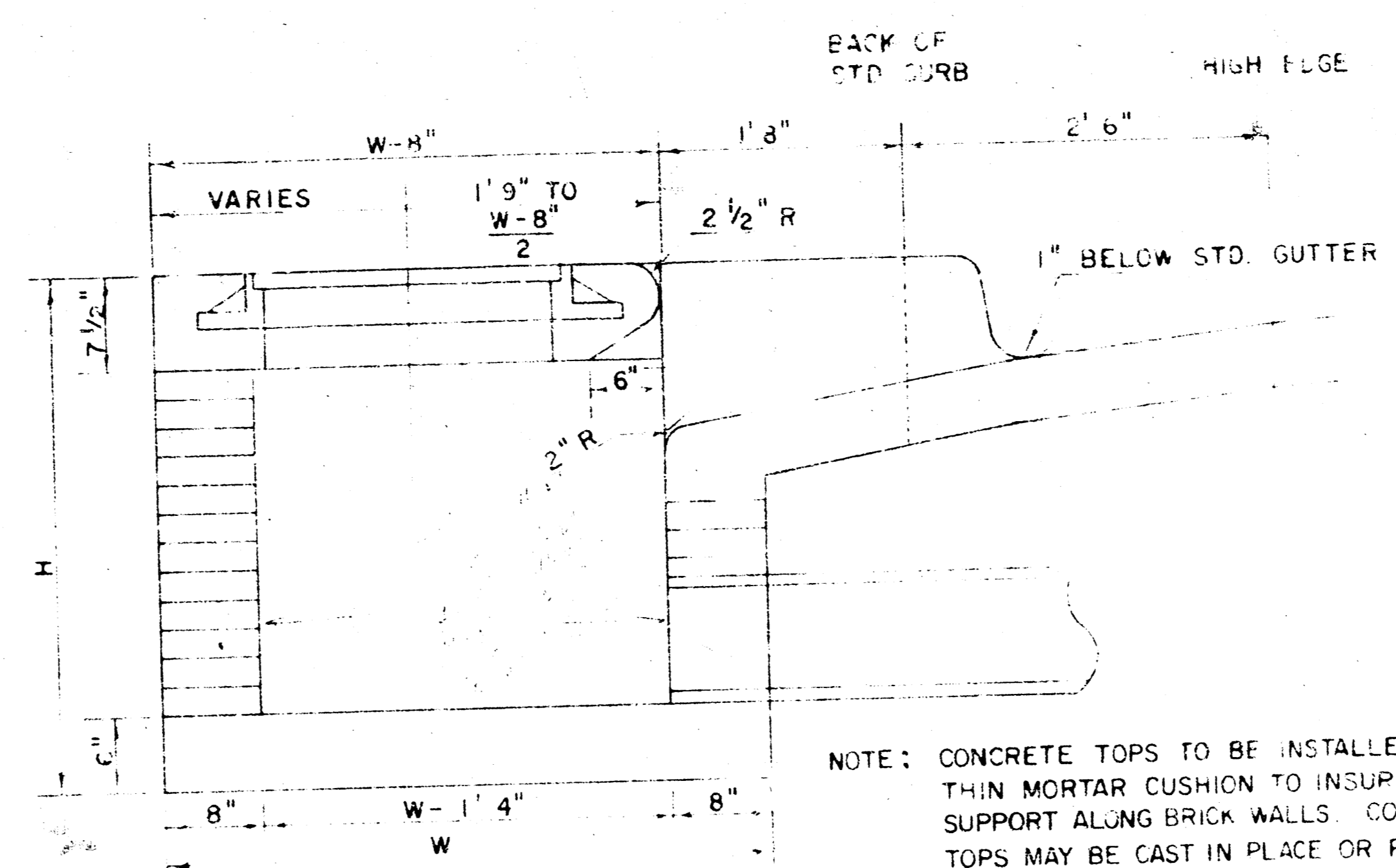
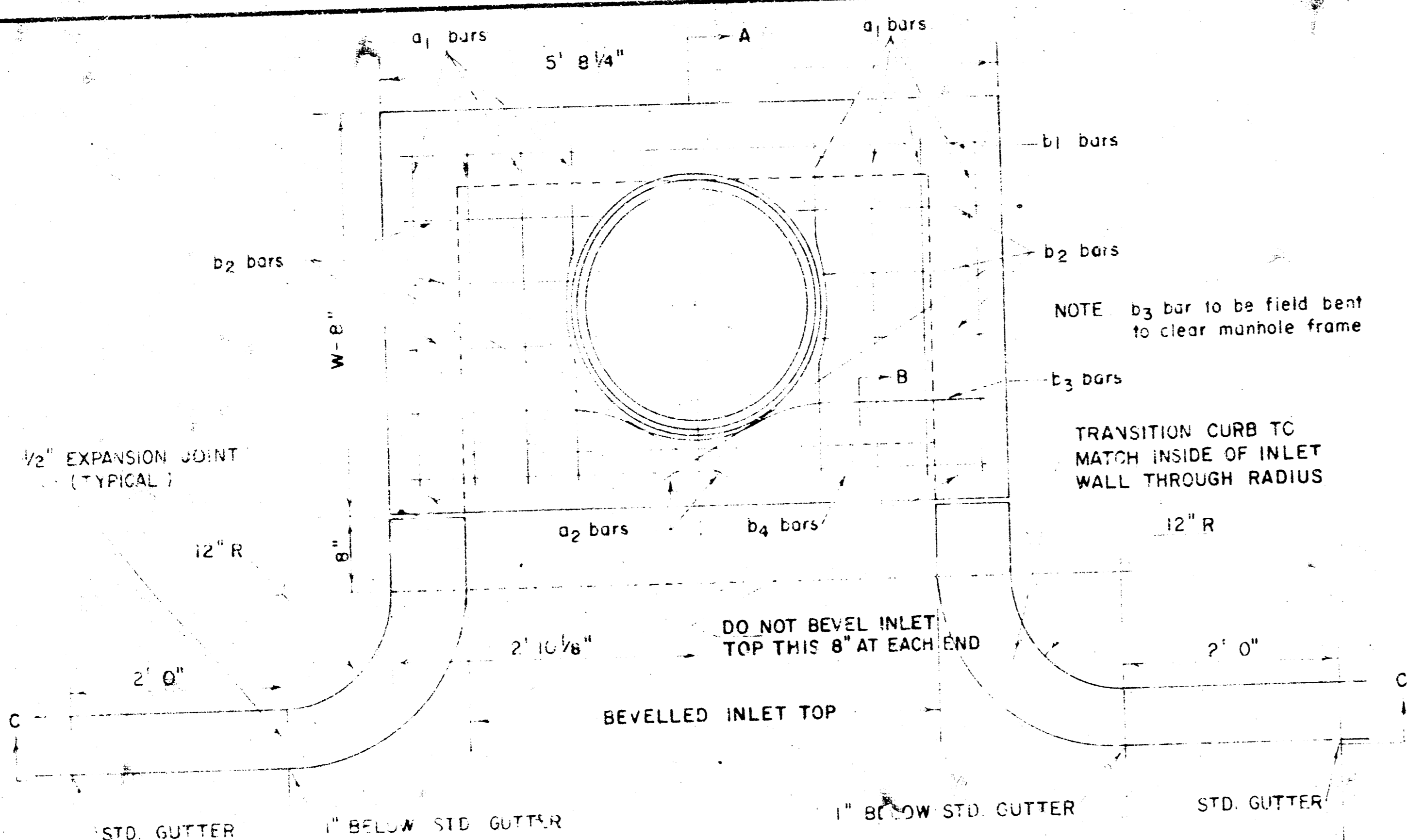
Profile Scale: Horiz. 1" = 20'
 Vert. 1" = 5'

PROFILE
 SHEET NO. 2-30
 DATE 11/1/51
 DRAWN BY Z.L.C.
 CHECKED BY A.L.M.
 IN CHARGE BY R.W.L.

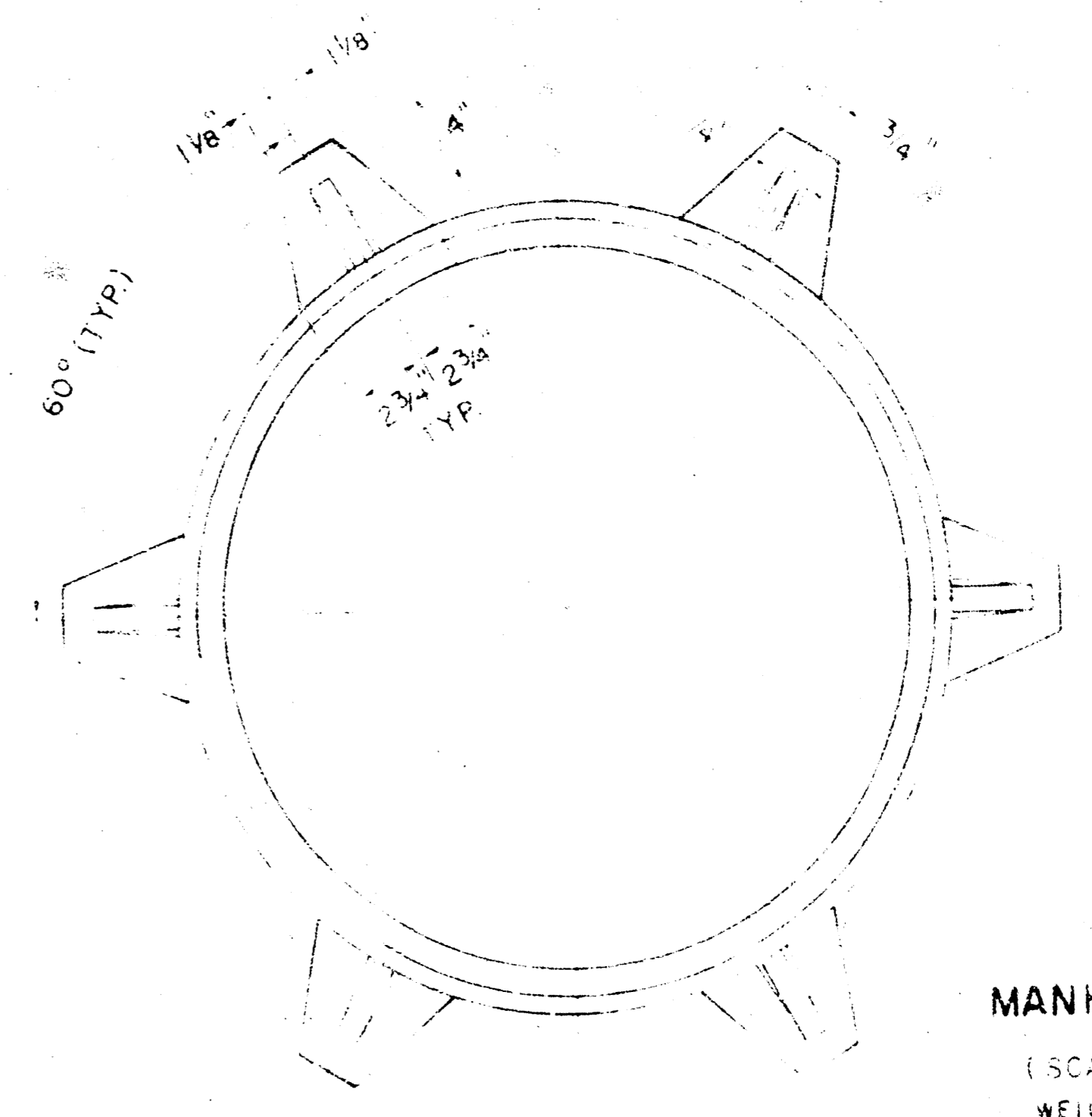


1/2

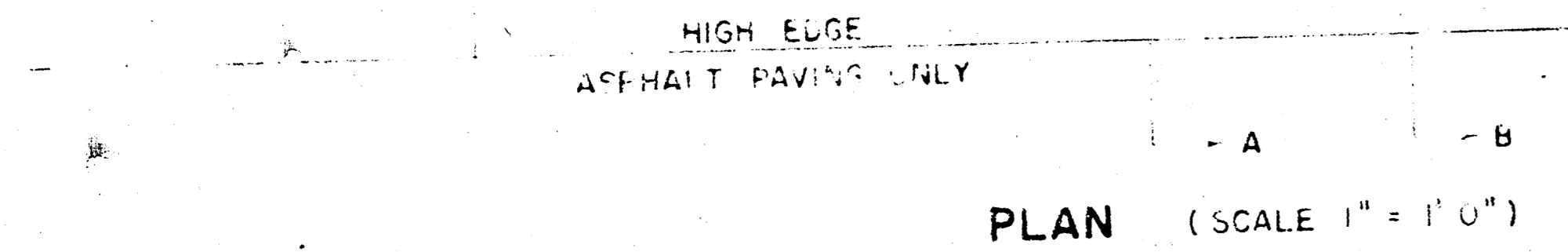
**INCIDENTAL DRAINAGE
 IN CONNECTION WITH
 SUNNYBROOK LANE
 CITY OF WICHITA, KANSAS
 R.W. LINN CITY ENGINEER
 DATE
 PROJ. NO. 472 76 245 80841 000 000 002 1/2**



SECTION A-A
(SCALE 1" = 1'0")



MANHOLE FRAME
(SCALE 1" = 5")
WEIGHT = 180 LBS.

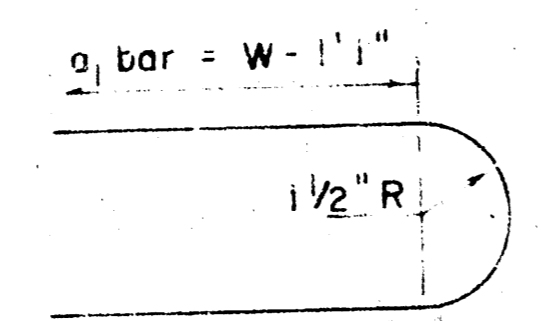


STEEL SCHEDULE

BAR NUMBER	a ₁	a ₂	b ₁	b ₂	b ₃	b ₄	WT. LBS.
1	2	3	4	5	6	7	8
W=4'2"	6'5"	3'4"	5'5"	1'5"	5'6"	5'5"	60"
W=5'0"	8'1"	4'4"	5'5"	1'5"	5'6"	5'5"	77"
W=6'0"	10'1"	5'4"	5'5"	1'5"	5'6"	5'5"	97"
W=7'0"	11'1"	6'1"	5'5"	1'5"	5'6"	5'5"	111"
W=8'0"	12'1"	7'4"	5'5"	1'5"	5'6"	5'5"	124"

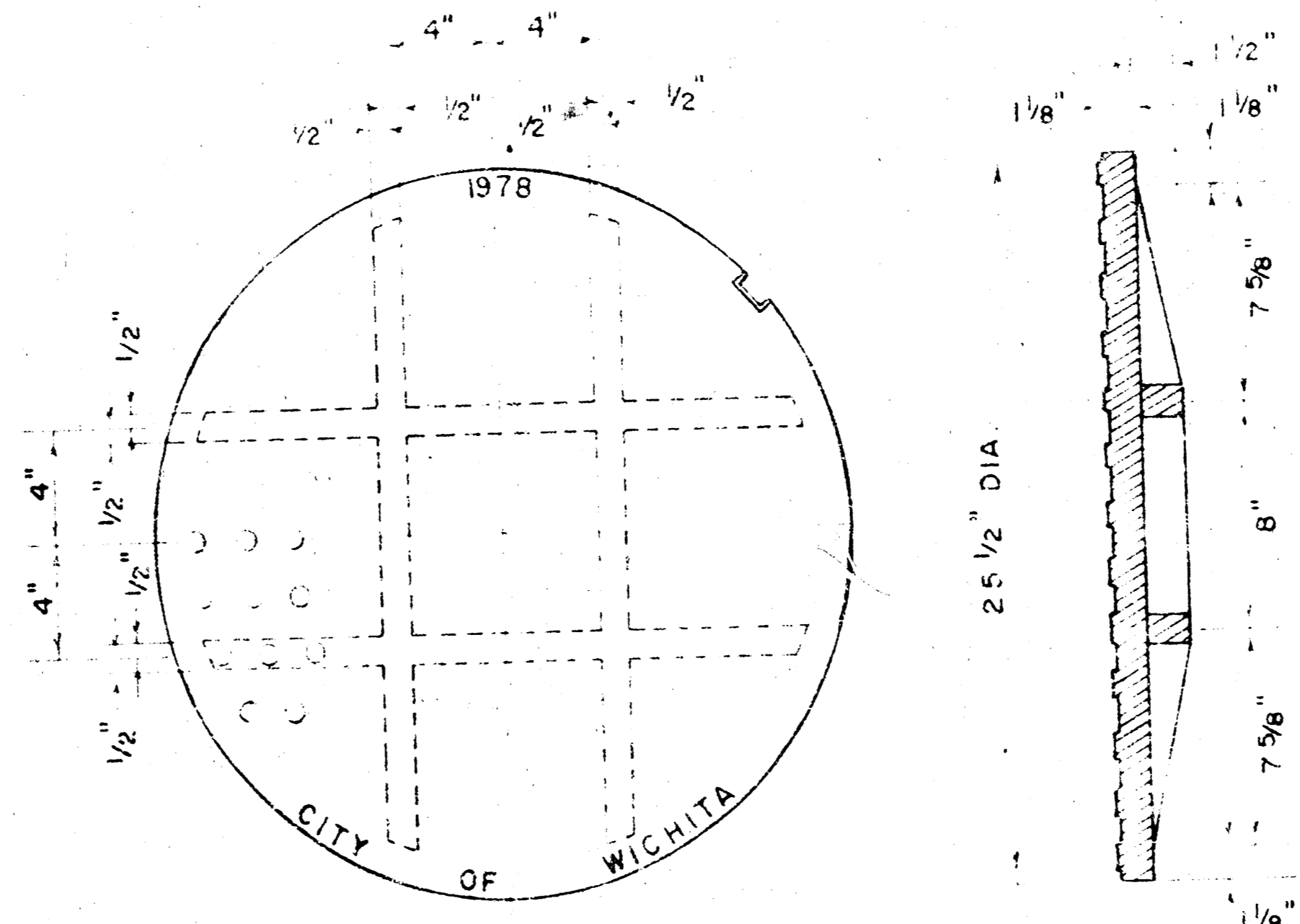
* NOTE: a₂ BARS TO BE PLACED APPROX 2" BELOW TOP OF INLET COVER

BENDING DIAGRAM

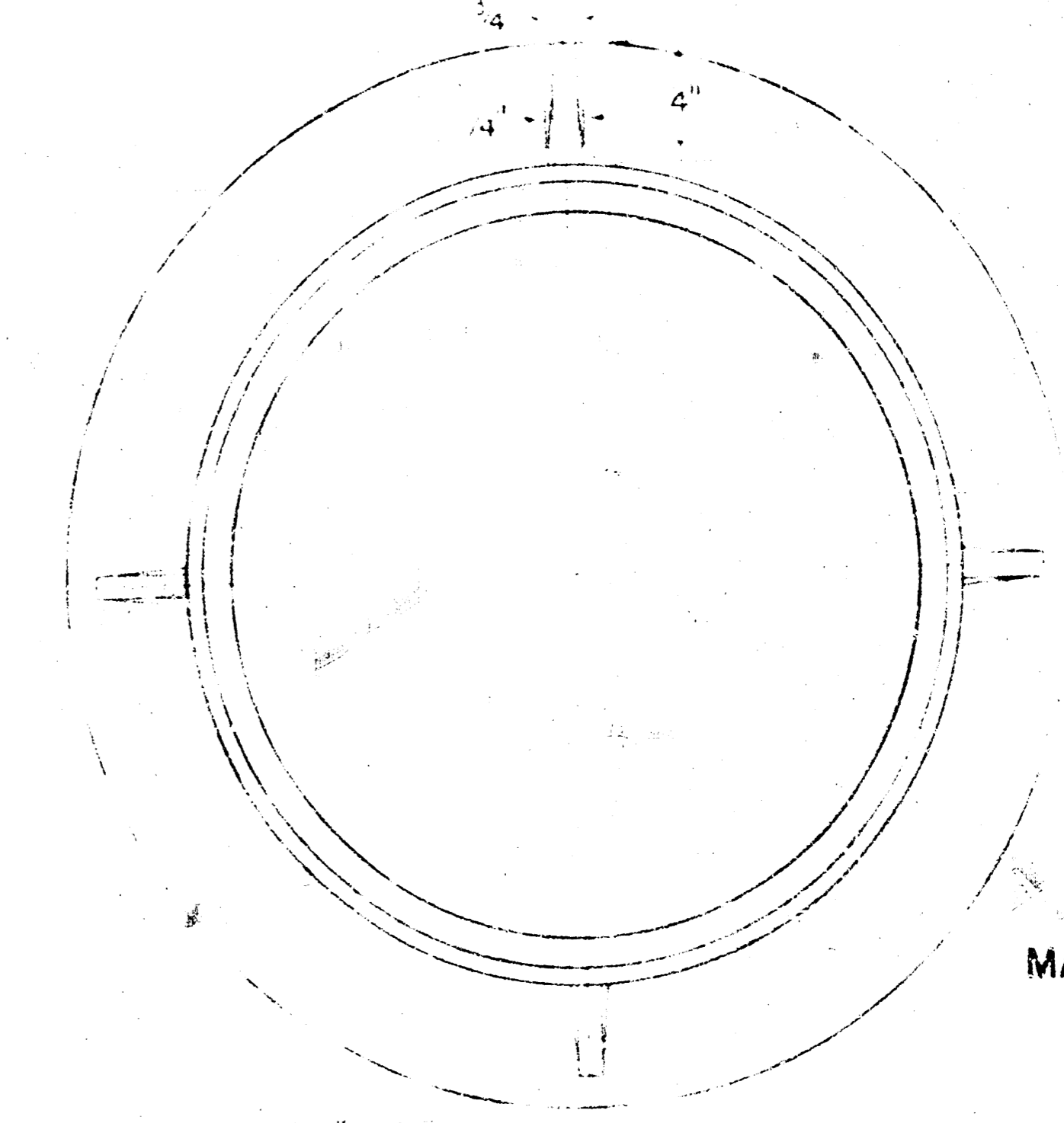
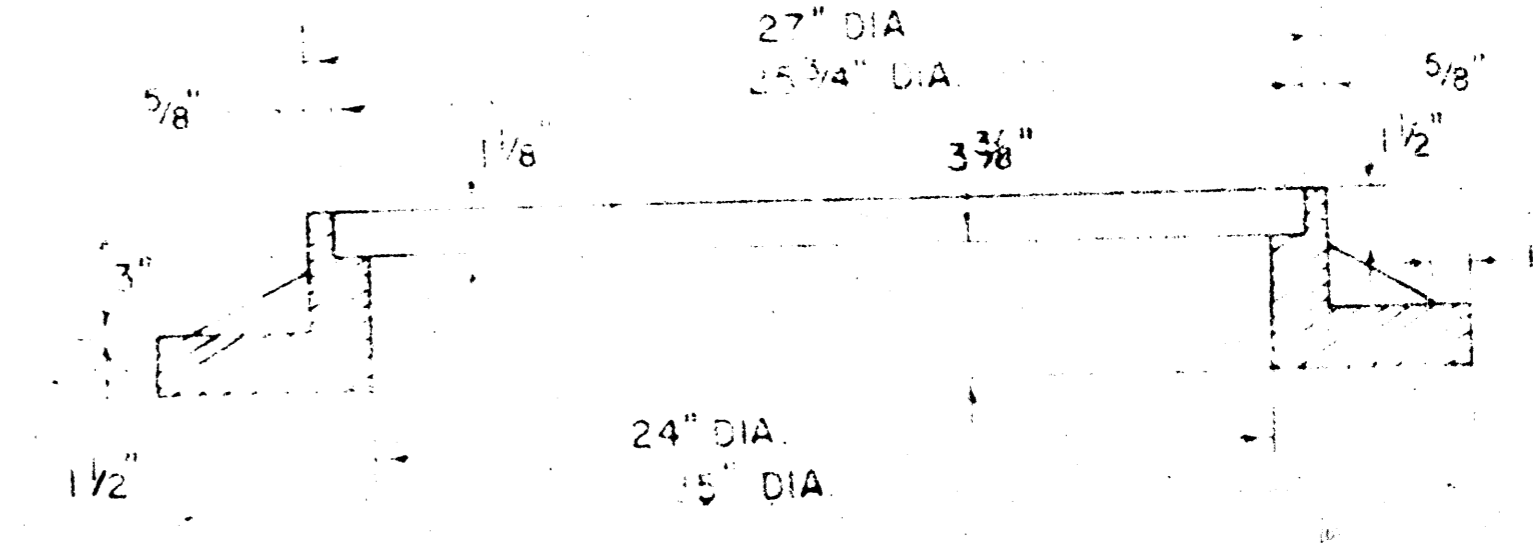


W	PRE-CAST TOP SIZE	PIPE SIZE	CU. YD. CONC.
4' 2"	36" x 5'8 1/4" x 7 1/2"	21" B SMALLER	0.46 *
5' 0"	44" x 5'8 1/4" x 7 1/2"	24" B 30"	0.57 *
6' 0"	54" x 5'8 1/4" x 7 1/2"	36" B 42"	0.71 *
7' 0"	64" x 5'8 1/4" x 7 1/2"	48" B 54"	0.84 *
8' 0"	74" x 5'8 1/4" x 7 1/2"	60" B 66"	0.97 *

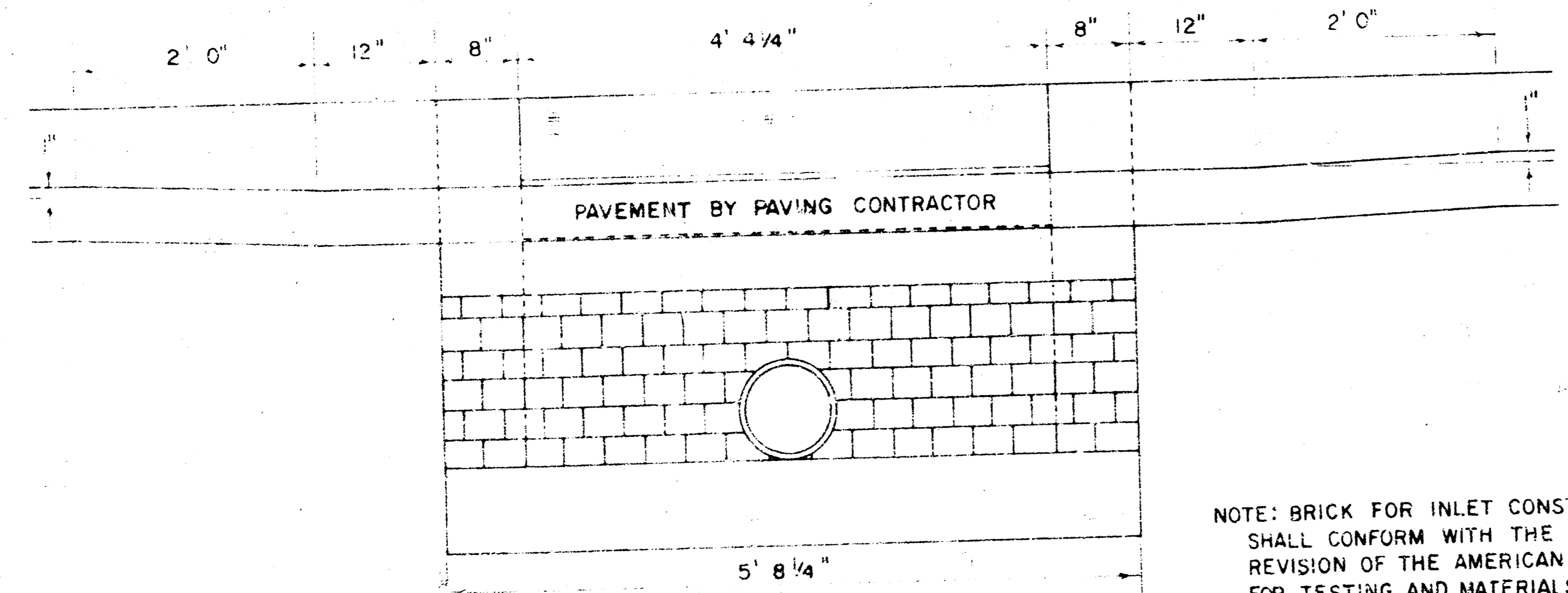
* GROSS VOLUME



MANHOLE COVER
(SCALE 1" = 6")
WEIGHT = 170 LBS.

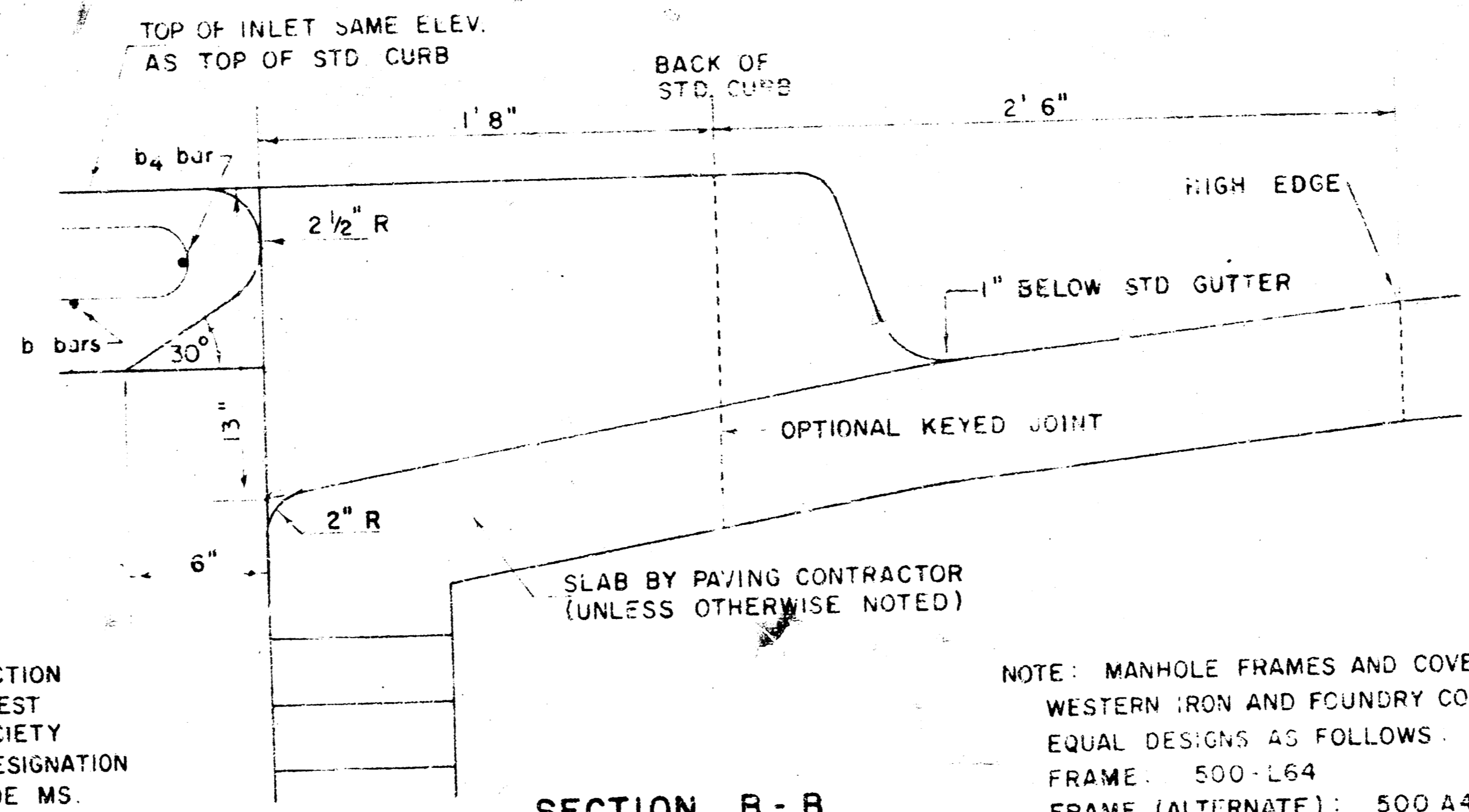


MANHOLE FRAME
(ALTERNATE)
(SCALE 1" = 6")
WEIGHT = 180 LBS.



SECTION C-C
(SCALE 1" = 1'0")

NOTE: BRICK FOR INLET CONSTRUCTION SHALL CONFORM WITH THE LATEST REVISION OF THE AMERICAN SOCIETY FOR TESTING AND MATERIALS DESIGNATION C-32 FOR MANHOLE BRICK GRADE MS.



SECTION B-B
(SCALE 1" = 6")

NOTE: MANHOLE FRAMES AND COVER ARE WESTERN IRON AND FOUNDRY CO. INC. OR EQUAL DESIGNS AS FOLLOWS.
FRAME (500-L64)
FRAME (ALTERNATE): 500-A4
COVER 222 S4 "NOBBY"

DETAIL STANDARD TYPE IA CURB INLET
CITY OF WICHITA, KANSAS
R. W. LINN - CITY ENGINEER
OCTOBER 1978